

Galaxy S22 Ultra

SCG14

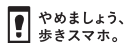
Quick Start Guide

"オンラインマニュアル (Online Manual)" (Japanese)

For detailed descriptions on various functions, scan the QR code on the right or use the "オンラインマニュアル (Online Manual)" (Japanese) on your product with the following operations.



On the home screen, flick up → [Galaxy]
→ [取扱説明書 (Online Manual)]



やめましょう、
歩きスマホ。



あぶない!
電池への衝撃



キケン!
水ぬれ充電



モバイルリサイクルネットワーク
環境にやさしいリサイクル活動

Cell phone and PHS operators collect and recycle unused telephones, batteries and battery chargers at stores bearing the ♻️ logo regardless of brand and manufacturer to protect the environment and reuse valuable resources.

April 2022, 1st Edition

Imported by: SAMSUNG ELECTRONICS JAPAN Co., Ltd.

Manufactured by: Samsung Electronics Co., Ltd.

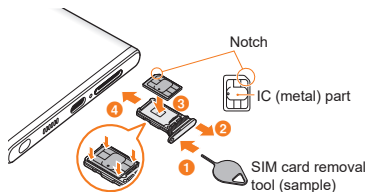
List of Packaged Items

- Main unit
- S Pen
- SIM card removal tool (sample)
- USB cable (CtoC) (sample)
- クイックスタートガイド (Quick Start Guide) (Japanese)
- ご利用にあたっての注意事項 (Notes on Usage) (Japanese)
- データ移行用試供品取扱説明書 (Sample for data transfer Manual) (Japanese)

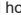
memo

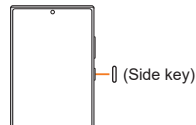
- Please use specified charging equipment (sold separately).
- The battery is built into the product.
- Illustrations used in this manual are just images for explanations. They may be different from the actual ones.

Attaching the SIM Card

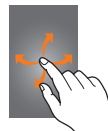


Turning the Power On

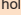
- 1 Press and hold  (Side key) for over 2 seconds



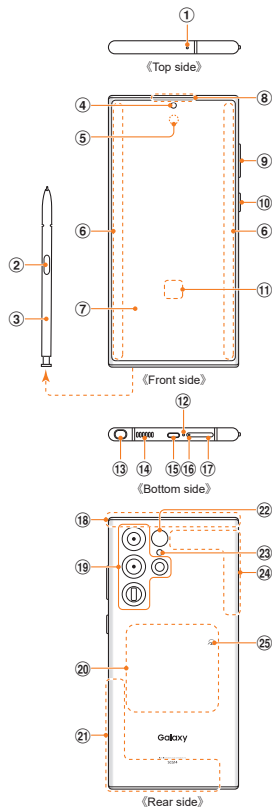
- 2 Swipe the screen up and down, left and right to unlock the screen



memo

- The first time the product turns ON, the initial setting screen appears.
- If the screen unlock method has been set, unlock the screen with the set method.
- Press and hold  (Side key) and lower side of the Volume key simultaneously for over 7 seconds, when the power cannot be turned off in the usual way or the screen freezes.

Names of Parts



- ① Mouthpiece/Microphone (upper)^{*1}
- ② Pen button
- ③ S Pen
- ④ Front camera
- ⑤ Proximity/Light sensor^{*2}
- ⑥ Edge screen
- ⑦ Display (Touch panel)
- ⑧ Receiver/Speaker^{*1,3}
- ⑨ Volume key
- ⑩ ||(Side key)
- ⑪ Fingerprint recognition sensor
- ⑫ Mouthpiece/Microphone (lower)^{*1}
- ⑬ S Pen slot
- ⑭ Speaker^{*1}
- ⑮ USB Type-C[®] connection terminal (external connection terminal)
- ⑯ Tray eject hole
- ⑰ SIM card tray
- ⑱ 5G/4G/GPS antenna part^{*4}
- ⑲ Rear camera
- ⑳ Wireless charging position
- ㉑ 5G/4G antenna part^{*4}
- ㉒ Range AF sensor
- ㉓ Flash/Light
- ㉔ 5G/4G/Wi-Fi[®]/Bluetooth[®] antenna part^{*4}
- ㉕ mark

- *1 Be careful to not cover over with your fingers, etc., while relevant functions are being used. In addition, do not insert the SIM card removal tool (sample) into the product since this might cause damage.
- *2 Do not cover with stickers, etc. Functions may not work correctly.
- *3 The product uses it for both a receiver and a speaker.
- *4 The antenna is built into the main unit. Covering the area around the antenna with your hand may affect the calling/communication quality.

- For the latest information, please refer to the "取扱説明書 詳細版 (Full Instruction Manual)" (Japanese), available on the website of the contracted carrier.
- For the latest information on the product, refer to the following website.
<https://www.galaxymobile.jp/> (Japanese)
- When using a protective film, make sure that it is a product compatible with the fingerprint recognition sensor. If you attach a commercially available protective film on the display, fingerprint recognition may fail.
- The contents described in this manual may be different due to the version upgrade of the software of this product or the change / end of service. And the contents of this manual are subject to change without notice.