



Galaxy Z Flip 5G

SCG04

Quick Start Guide

For inquiries, call: Customer Center

For general information (toll free)

Business hours 9:00–20:00 (7 days a week)

From au cell phones:

157 without area code

In case above numbers are not available,
call toll-free:

0120-977-033 (except Okinawa)

0120-977-699 (Okinawa)

From non-au mobile phones /
general subscriber phones:

0077-7-111

For theft, loss, damage (toll free)

Business hours 24 hours (7 days a week)

From au cell phones:

113 without area code

In case above numbers are not available,
call toll-free:

0120-925-314

From non-au mobile phones /
general subscriber phones:

0077-7-113

Repair and Delivery Support Center

For theft, loss, damage (toll free)

Business hours 9:00–20:00 (7 days a week)

From au cell phones / non-au mobile phones /
general subscriber phones:

0120-925-919



あぶない!
電池への衝撃



やめましょう、
歩きスマホ。



キケン!
水ぬれ充電



モバイルリサイクル・ネットワーク
参加店への回収ボックスにご持ちください。

Cell phone and PHS operators collect and recycle unused
telephones, batteries and battery chargers at stores bearing
the ♻️ logo regardless of brand and manufacturer to
protect the environment and reuse valuable resources.

December 2020, 1st Edition

Sold by:

KDDI CORPORATION,

OKINAWA CELLULAR TELEPHONE COMPANY

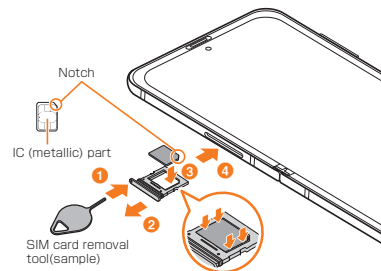
Imported by: SAMSUNG ELECTRONICS JAPAN Co., Ltd.

Manufactured by: Samsung Electronics Co., Ltd.

List of Packaged Items

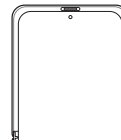
- Main unit(protective film (sample) attached)
- SIM card removal tool (sample)
- AKG Tuning High-quality Earphone with Microphone (USB Type-C™) (sample)
- USB Type-C cable (sample)
- クイックスタートガイド (Quick Start Guide) (Japanese)
- ご利用にあたっての注意事項 (Notes on Usage) (Japanese)

Attaching the au IC Card (SIM Card)



Turning the Power on

- 1 Press and hold over 2 seconds
- 2 Unlock the screen



(Side key)/
Fingerprint
recognition sensor



- © Press and hold | (Side key)/Fingerprint recognition sensor and lower side of volume key simultaneously for over 7 seconds, when the power cannot be turned off in the usual way or the screen freezes.

"オンラインマニュアル (Online Manual)" (Japanese)

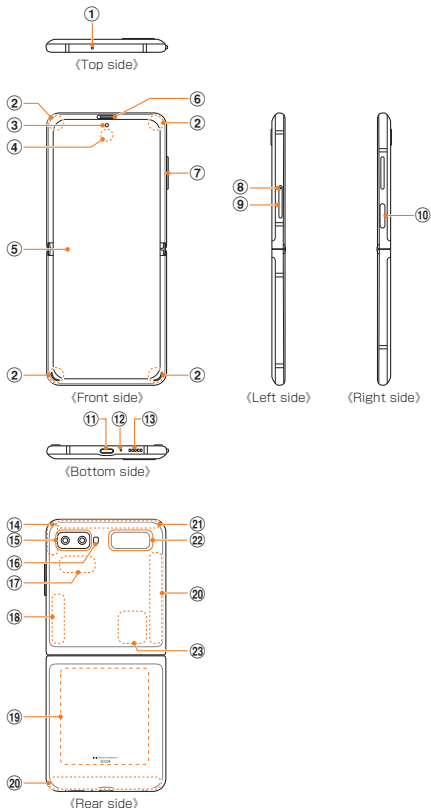


For detailed descriptions on various functions, scan the QR code on the right side or use the "オンラインマニュアル (Online Manual)" (Japanese) on your product with the following operations.

On the home screen, flick up or flick down → [Galaxy] → [取扱説明書 (Online Manual)]

Names of Parts

Opened



- ① Mouthpiece/Microphone (upper)^{*1}
- ② Magnet part^{*2,3}
- ③ Front camera^{*4}
- ④ Proximity/Light sensor^{*5}
- ⑤ Main display (Touch panel)^{*4,6,7,8}
- ⑥ Receiver^{*1}
- ⑦ Volume key
- ⑧ Tray eject hole
- ⑨ au IC card tray
- ⑩ | (Side key)/Fingerprint recognition sensor
- ⑪ USB Type-C connection terminal (external connection terminal)
- ⑫ Mouthpiece/Microphone (lower)^{*1}
- ⑬ Speaker^{*1}
- ⑭ Wi-Fi®/Bluetooth® antenna part^{*9}
- ⑮ Rear camera^{*4}
- ⑯ Flash/Light
- ⑰ Wi-Fi® antenna part^{*9}
- ⑱ 5G antenna part^{*9}
- ⑲ Transmitting and receiving positions for NFC functions/Wireless charging position
- ⑳ 5G/4G antenna part^{*9}
- ㉑ 5G/4G/GPS antenna part^{*9}
- ㉒ Cover display (Touch panel)
- ㉓ Bluetooth® antenna part^{*9}

- *1 Be careful to not cover over with your fingers, etc., while relevant functions are being used. In addition, do not insert the SIM card removal tool (sample) into the product since this might cause damage.
- *2 Your device contains magnets, which may affect medical devices, such as pacemakers or implantable cardioverter defibrillators.
If you are using any of these medical devices, keep your device a safe distance from them and consult with your physician before you use the device.

- *3 Keep a safe distance between your device and objects that are affected by magnets. Objects such as credit cards, passbooks, access cards, boarding passes, or parking passes may be damaged or disabled by the magnets in the device.
- *4 Do not press the main display, the front camera lens or the rear camera lens with a hard or sharp object, such as a pen or your fingernail. Doing so could result in scratching or puncturing them.
- *5 Do not cover with the sticker, etc.. Functions may not work correctly.
- *6 A protective film (sample) is already attached to the main display.
- *7 The product's main display has a crease in the center of it, but this is the product's normal state.
- *8 Do not attach adhesives, such as films or stickers, to the main display.
- *9 The antenna is built into the product. Covering around the antenna by hand may affect calling quality/communication quality.

memo

- Please use a specified charging equipment (sold separately).
- The battery is built into the product.
- Illustrations used in this manual are just images for explanations. They may be different from actual ones.
- Do not close the product in the reverse direction. That may cause the product to get damaged.
- When folding the device, do not place any objects, such as cards, coins, or keys, on the main display. The display may be damaged.
- The device is not waterproof nor dustproof. Do not wet with water, nor put fine particles such as sand into the device.

- For the latest information, please refer to the latest "オンラインマニュアル (Online Manual)" (Japanese) or the "取扱説明書 詳細版 (Full Instruction Manual)" (Japanese), available on the au homepage. <https://www.au.com/support/service/mobile/guide/manual/> (Japanese)
- For the latest information of the product, refer to the following homepage. <https://www.galaxymobile.jp/> (Japanese)
- The contents described in this manual may be different due to the version upgrade of the software of this product or the change/end of service. And the content of this manual is subject to change without notice.