

au

# Galaxy S20 5G

SCG01

## Quick Start Guide

### "オンラインマニュアル (Online Manual)" (Japanese)

For detailed descriptions on various functions, scan the QR code on the right side or use the "オンラインマニュアル (Online Manual)" (Japanese) on your product with the following operations.



On the home screen, flick up or flick down → [Galaxy] → [取扱説明書 (Online Manual)]

### For inquiries, call: Customer Center

For general information (toll free)

Business hours 9:00 - 20:00 (7 days a week)

From au cell phones: From non-au mobile phones / general subscriber phones:

157 without area code ☎ 0077-7-111

In case above numbers are not available, call toll-free:

☎ 0120-977-033 (except Okinawa)

☎ 0120-977-699 (Okinawa)

For theft, loss, damage (toll free)

Business hours 24 hours (7 days a week)

From au cell phones: From non-au mobile phones / general subscriber phones:

113 without area code ☎ 0077-7-113

In case above numbers are not available, call toll-free:

☎ 0120-925-314

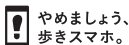
### Repair and Delivery Support Center

For theft, loss, damage (toll free)

Business hours 9:00 - 20:00 (7 days a week)

From au cell phones / non-au mobile phones / general subscriber phones:

☎ 0120-925-919



モバイルリサイクルネットワーク  
携帯電話のPHSの回収に協力しています。

Cell phone and PHS operators collect and recycle unused telephones, batteries and battery chargers at stores bearing the ♻️ logo regardless of brand and manufacturer to protect the environment and reuse valuable resources.

April 2020, 1st Edition

Sold by:

KDDI CORPORATION,

OKINAWA CELLULAR TELEPHONE COMPANY

Imported by: SAMSUNG ELECTRONICS JAPAN Co., Ltd.

Manufactured by: Samsung Electronics Co., Ltd.

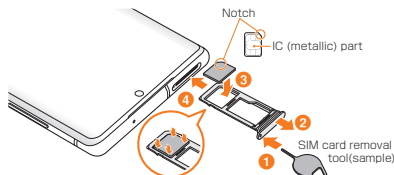
## List of Packaged Items

- Main unit (protective film (sample) attached)
- SIM card removal tool (sample)
- AKG Tuning High-quality Earphone with Microphone (USB Type-C) (sample)
- Clear case (sample)
- USB cable (CtoC) (sample)
- クイックスタートガイド (Quick Start Guide) (Japanese)
- ご利用にあたっての注意事項 (Notes on Usage) (Japanese)
- データ移行用試供品取扱説明書 (Sample for data transfer Manual) (Japanese)

## memo

- Please use a specified charging equipment (sold separately).
- The battery is built into the product.
- Illustrations used in this manual are just images for explanations. They may be different from actual ones.

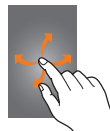
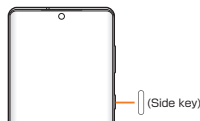
## Attaching au IC Card (SIM Card)



## Turning the Power on

1 Press and hold

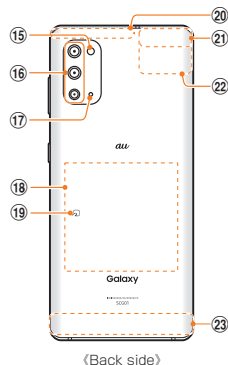
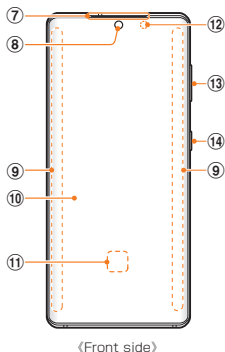
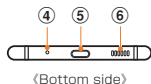
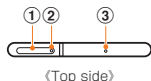
2 Unlock the screen



## memo

- Press and hold (Side key) and lower side of volume key simultaneously for over 7 seconds, when the power cannot be turned off in the usual way or the screen freezes.

## Names of Parts



- ① au IC card/microSD memory card tray
- ② Tray eject hole
- ③ Mouthpiece/Microphone (upper)<sup>\*1</sup>
- ④ Mouthpiece/Microphone (lower)<sup>\*1</sup>
- ⑤ USB Type-C connection terminal (external connection terminal)
- ⑥ Speaker
- ⑦ Receiver/Speaker<sup>\*2</sup>
- ⑧ Front camera
- ⑨ Edge screen
- ⑩ Display (Touch panel)<sup>\*3</sup>
- ⑪ Fingerprint recognition sensor
- ⑫ Proximity/Light sensor<sup>\*4</sup>
- ⑬ Volume key
- ⑭ (Side key)
- ⑮ Flash/Light
- ⑯ Rear camera
- ⑰ Microphone (rear)<sup>\*1</sup>
- ⑱ Wireless charging position
- ⑲ 〻mark
- ⑳ 4G/GPS antenna part<sup>\*5</sup>
- ㉑ 5G/4G/GPS antenna part<sup>\*5</sup>
- ㉒ Wi-Fi<sup>®</sup>/Bluetooth<sup>®</sup> antenna part<sup>\*5</sup>
- ㉓ 5G/4G antenna part<sup>\*5</sup>

- \*1 Be careful to not cover over with your fingers, etc., while relevant functions are being used. In addition, do not insert the SIM card removal tool (sample) into the product since this might cause damage.
- \*2 The product use it for both a receiver and a speaker.
- \*3 A protective film (sample) is already attached to the display.
- \*4 Do not cover with the sticker, etc. Functions may not work correctly.
- \*5 The antenna is built into the product. Covering around the antenna by hand may affect calling quality / communication quality.

- For the latest information, please refer to the latest "オンラインマニュアル (Online Manual)" (Japanese) or the "取扱説明書 詳細版 (Full Instruction Manual)" (Japanese), available on the au website. <https://www.au.com/support/service/mobile/guide/manual/> (Japanese)
- For the latest information of the product, refer to the following website. <https://www.galaxymobile.jp/> (Japanese)
- When using a protective film, make sure that it is a product compatible with the fingerprint recognition sensor. If you attach a commercially available protective film on the display, fingerprint recognition may fail.
- The contents described in this manual may be different due to the version upgrade of the software of this product or the change / end of service. And the content of this manual is subject to change without notice.