

## Quick Start Guide

### Using the Online Manual (Japanese)

For detailed descriptions of various functions, refer to the "Online Manual" (Japanese) following the procedure below:  
Swipe up the Home screen → [取扱説明書 (Online Manual)]



The "Online Manual" (Japanese) is also available on the au homepage:  
<https://www.au.com/online-manual/kyg01/>  
(Japanese)



April 2021, 1st Edition

Sales: KDDI CORPORATION  
OKINAWA CELLULAR TELEPHONE COMPANY  
Manufactured by: KYOCERA Corporation

## For inquiries, call:

### Customer Center

For general information (toll free)  
Business hours 9:00 to 20:00 (7 days a week)

From au mobile phones:

157 area code not required

In case above numbers are not available (for free),

☎ 0120-977-033 (except Okinawa)

From non-au mobile phones / general subscriber phones:

☎ 0077-7-111

☎ 0120-977-699 (Okinawa)

For theft, loss, or malfunction (toll free)

Business hours 24-hour (7 days a week)

From au mobile phones:

113 area code not required

In case above numbers are not available (for free),

☎ 0120-925-314

From non-au mobile phones / general subscriber phones:

☎ 0077-7-113

### Repair and Delivery Support Center

For theft, loss, or malfunction (toll free)

Business hours 9:00 to 20:00 (7 days a week)

From au mobile phones / non-au mobile phones / general subscriber phones:

☎ 0120-925-919

## List of Packaged Items

Make sure that you have all the following packaged items with the product.

- Main unit
  - \*Front screen (KYG01KGA) pasted on Display/Front cover (KYG01VRA, KYG01VKA, KYG01VYA) installed on front of main unit
  - \*Back cover (KYG01TRA, KYG01TKA, KYG01TYA) \*Installed on back of main unit
- Battery pack (KYG01UAA)
- LOCK Rotating Tool (sample)
- Hexagon Wrench (sample)
- クイックスタートガイド (Quick Start Guide) (Japanese)
- ご利用にあたっての注意事項 (Notes on Usage) (Japanese)

The following items are not included in the package.

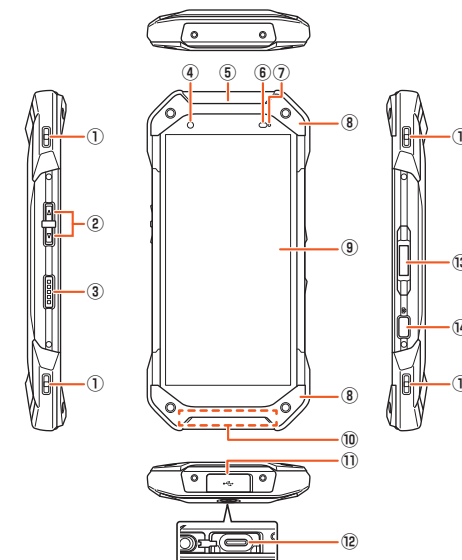
- AC adapter
- USB Type-C™ cable
- Wireless Charging Pad
- KYOCERA 3.5Φ Type-C conversion cable (O401QNA)
- microSD memory card
- Earphone

### memo

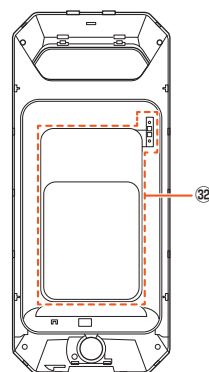
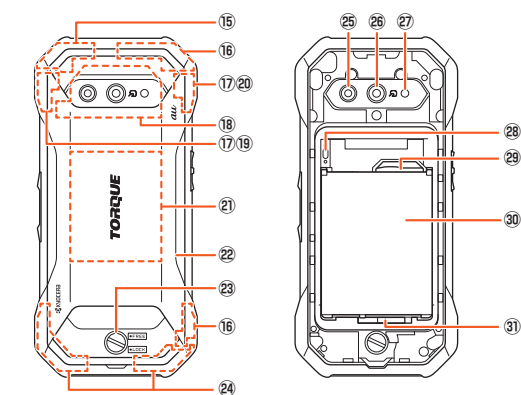
- Purchase a specified charger (sold separately).
- Illustrations of cell phones in this manual are only for reference. They may look different from the actual product.

- 1 -

## Names and Functions of Parts



- 2 -



Back cover (back)

- ① Strap eyelet
- ② Volume up/down button  
Adjust media sound volume such as music or videos.
- ③ Direct button  
Press and hold or press twice consecutively to activate the set function.
- ④ In camera (lens)
- ⑤ Receiver/speaker  
Hear the other party's voice on call, playback sound of the auto answering, etc.

- 3 -

- 4 -

- ⑥ Proximity sensor/Light sensor  
If the sensor part becomes covered during a call, the proximity sensor turns the display off to prevent erroneous touch panel operation. Light sensor detects the ambient light level to adjust the display brightness.
- ⑦ Incoming (charging) lamp  
Lights in red during charging. Flashes in blue for a missed call or new mail.
- ⑧ Front cover  
Remove when performing maintenance or replacing the front screen.  
For details on attaching/removing the front cover, refer to "取扱説明書 詳細版 (Full Instruction Manual)" (Japanese).
- ⑨ Display (touch panel)
- ⑩ Mouthpiece (microphone)/speaker/atmospheric pressure sensor  
Relays your voice to the other party. Or used to record voice sound. Take care not to cover the mouthpiece (microphone) with your fingers, etc. during calling or video recording.
- ⑪ USB cover  
The opening in the cover is a necessary part of its waterproof construction. Do not poke with a pointed object or block it.
- ⑫ External connection terminal  
Used to connect Type-C Common AC Adapter O2 (sold separately), etc.
- ⑬ Power button/fingerprint sensor  
Use to turn on/off, activate/deactivate the sleep mode. If a fingerprint is registered, unlock the screen by fingerprint authentication.

- 5 -

- ⑭ Camera button  
Press and hold to activate the camera. Also use as shutter for still photos/movie and underwater camera screen. Depending on the setting, functions other than the camera can also be activated.
- ⑮ Built-in GPS antenna<sup>1</sup>
- ⑯ Built-in sub antenna<sup>1</sup>
- ⑰ Built-in Bluetooth/Wi-Fi antenna<sup>1</sup>
- ⑱ NFC (FeliCa compatible) antenna<sup>1</sup>  
Hold over a reader/writer when using Osaifu-Keitai®. Send or receive data via IC transmission.
- ⑲ 5G main antenna<sup>1</sup>
- ⑳ 5G sub antenna<sup>1</sup>
- ㉑ Wireless charging area<sup>1</sup>  
For wireless charging, place the "R" letter of "TORQUE" logo on the ⚡ mark on a wireless charging pad (commercially available).
- ㉒ Back cover<sup>2</sup>
- ㉓ Lock knob
- ㉔ Built-in main antenna<sup>1</sup>
- ㉕ Out camera (lens)
- ㉖ Wide camera (lens)
- ㉗ Shooting/simple light
- ㉘ Wireless charging antenna connection terminal
- ㉙ au IC card/microSD memory card tray
- ㉚ Battery pack  
Under the battery pack, au IC card slot and microSD memory card slot are found.
- ㉛ Battery lock
- ㉜ Wireless charging antenna/charging connection area<sup>2</sup>

- 6 -

\*1 Do not cover antennas with your hand or put stickers, etc. Doing so may affect calling/communication quality or wireless charging.

\*2 Avoid adhering stickers, etc. on the back cover where the wireless charging antenna/charging connection area are located. Doing so may affect wireless charging.

### memo

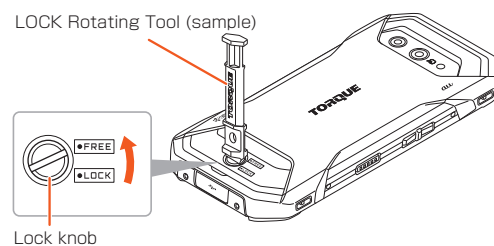
- It is not guaranteed that this product can be charged with every wireless charger product with a ⚡ mark.
- Do not put stickers, etc. on the proximity sensor/light sensor.
- Moving your face off from the proximity sensor during a call causes malfunctions such as holding or muting a call. During a call, keep your ear on the proximity sensor.
- Product is equipped with an atmospheric pressure sensor. You can display barometric pressure and elevation when using a barometric display app, however, values are not absolute due to a number of variables, and are approximate only.
- Do not remove the film sheet from the mouthpiece (microphone)/speaker/atmospheric pressure sensor.
- A front screen is adhered to the product to protect the display (touch panel). If the screen becomes damaged or worn, it can be replaced with the front screen (KYG01KGA) (sold separately).

- 7 -

## Attaching the au IC Card (SIM Card)

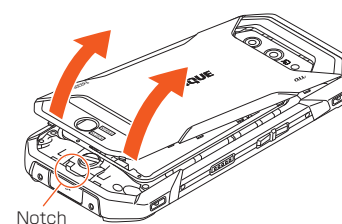
Attach the au IC card after turning off the product.

### 1 Use the LOCK Rotating Tool (sample) to turn the lock to "FREE"



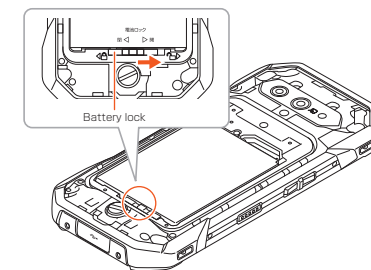
### 2 Remove the back cover on the back side of the product

Lift the back cover by the center notch of the cover using fingertips (fingernail, etc.) in the direction of the arrow to remove.



### 3 Slide the battery lock to the (open) direction

The battery lock is unlocked and the battery pack is also released.



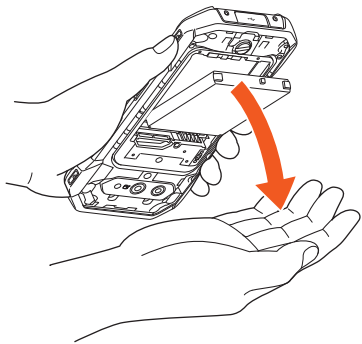
- 8 -

- 9 -

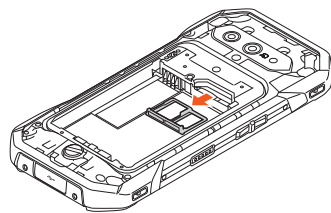
- 10 -

#### 4 Remove the battery pack

Use one hand to catch the battery pack as shown, and tap the product while bringing hands together to remove.

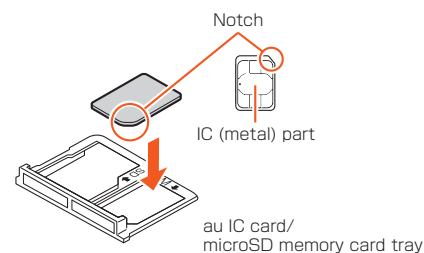


#### 5 Pull out the au IC card/microSD memory card tray straight

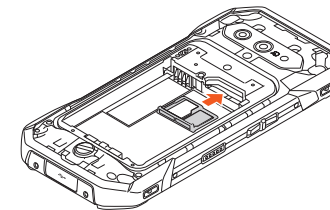


#### 6 With the IC (metal) part facing down, fit the au IC card into the au IC card/microSD memory card tray

Note the orientation of the notch. Fit the au IC card into the au IC card/microSD memory card tray so that the au IC card does not shift.



#### 7 Insert the au IC card/microSD memory card tray into the slot straight until it stops



#### memo

Do not use a screwdriver, etc. to remove the battery pack. Doing so may damage the battery pack.

- 11 -

- 12 -

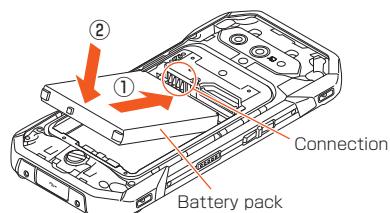
- 13 -

- 14 -

#### 8 Attach the battery pack

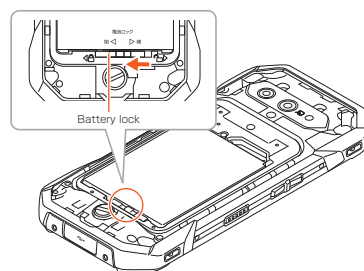
Confirm the position of connection, and then slide the battery pack in and press it firmly into place.

- Install the battery pack after confirming the au IC card/microSD memory card tray is properly inserted.



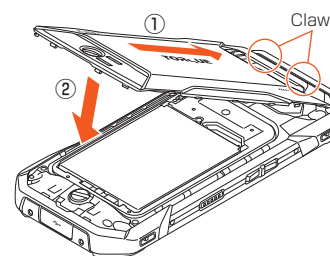
#### 9 Slide the battery lock to the (close) direction

The battery lock is locked and the battery pack is fixed.



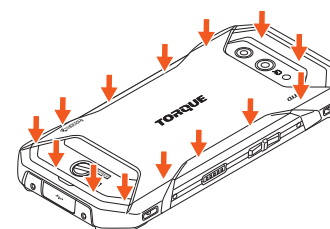
#### 10 Attach the back cover

Insert the back cover diagonally from the two claws on the edge of the back cover (1), and then push the bottom end of the back cover (2) to fit it.



#### 11 Press the back cover where shown by the arrows making sure the cover is pressed down completely around

- The back cover can be closed only when the battery lock is locked.



- 15 -

- 16 -

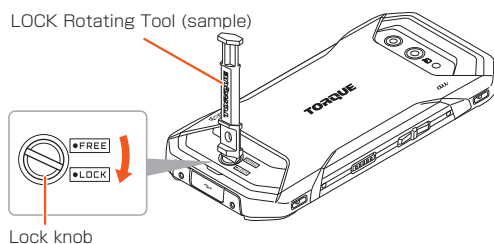
- 17 -

- 18 -

#### 12 Use the LOCK Rotating Tool (sample) to turn the lock to "LOCK"

Avoid tightening more than necessary. Doing so may cause damage.

- The lock knob can be turned to "LOCK" only when the battery lock is locked.



#### Turning the Power On/Off

##### Turning the Power On

#### 1 Press and hold (Power button) until the incoming light turns on

The start screen is displayed  
• For the first time you turn on the product, the initial setting activates.

#### memo

- When logos are being displayed on the screen, do not touch the screen because the initial setting of the touch panel activates. Doing so may prevent the touch panel from working properly.
- If you skip the operation of the initial settings at the first start-up, you can set later.

##### Turning the Power Off

#### 1 Press and hold (Power button) for at least 1 second

#### 2 [Power]→[Power off]

#### Forcing the Product to Shut Down and Restart

You can force the product to power off and reboot when the screen does not respond, or the power cannot be turned off.

#### 1 Hold down (Power button) and (Volume up button) at the same time for at least 11 seconds

#### memo

- If you turn off the product forcibly and restart, any unsaved data will be lost. Do not perform except when the product does not respond.

#### Switching to English Display

You can switch the language displayed on the screen to English.

#### 1 Swipe up the Home screen → [設定 (Settings)] → [システム (System)] → [言語と入力 (Languages & input)] → [言語 (Languages)]

#### 2 [English]

The message "起動中のアプリ、メール送受信、ダウンロードなどが終了される場合があります。" (Applications, mail transmission/reception, and downloads may be terminated.) appears, confirm the message and then tap [OK].

#### memo

Attaching incorrectly may cause damage to the battery pack.

- 19 -

- 20 -

- 21 -

Cell phone and PHS operators collect and recycle unused telephones, batteries and battery chargers at stores bearing the ♻️ logo regardless of brand and manufacturer to protect the environment and reuse valuable resources.

やめましょう、歩きスマホ。

キケン! 水ぬれ充電

あぶない! 電池への衝撃

- 22 -