

URBANO_{v02} Setting Guide

Introduction

Thank you for buying the "URBANO V02" (simply called the "product" from here on). In this guide, settings and precautions for using the product are described.
For explanations of basic functions, refer to "Basic Manual".

Basic Operation

Describes the basic operations.

Initial settings

Make initial settings when you turn the power on for the first time.

au Easy Setting

Set au ID.

E-mail

Make initial settings for E-mail (@ezweb.ne.jp) etc.

Making a call

Add a new contact to Contacts to call.

Receiving a call

Describes how to receive a call.

Saving battery power

Describes the setting to save battery consumption using "Eco Mode".

Setting Wi-Fi*

Describes how to connect Wi-Fi* network.

Viewing/playing data

Describes how to view/play still images or video data.

Infrared communication

Describes how to send/receive data between the product and another device using infrared communication function.

Transferring data from au Settings Menu

Restore/back up data from/to your previously used au phone to/from this product using microSD card or the au Smart Pass server.

Company names and product names referred to in this manual are trademarks or registered trademarks of respective companies.
The TM, ® marks may be omitted in this manual.

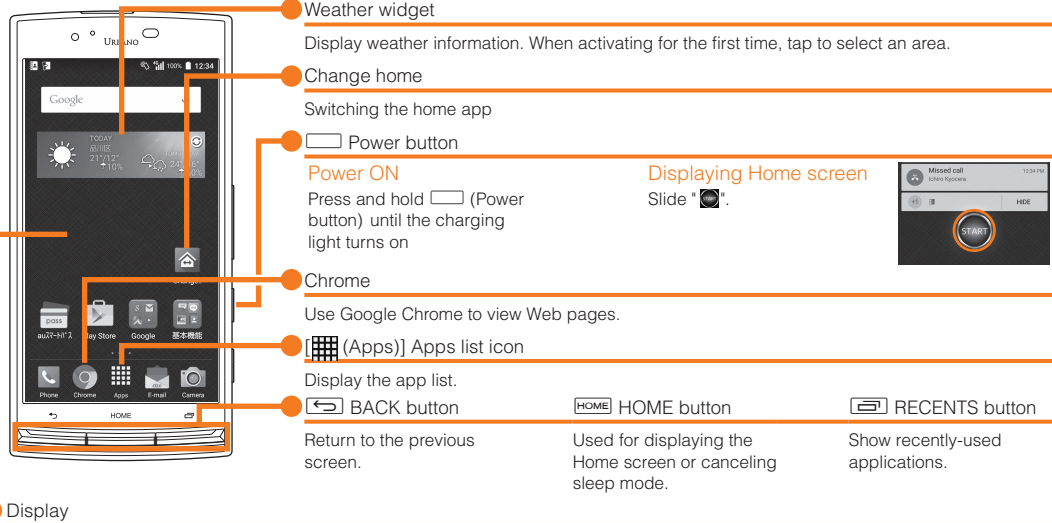
Screen illustrations shown in this manual may look different from the actual screens.
In some cases, minor details or a part of a screen may be omitted.

June 2015, 1st Edition
Sold by: KDDI CORPORATION
OKINAWA CELLULAR TELEPHONE COMPANY
Manufactured by: KYOCERA Corporation

Basic Operation

For explanations of basic functions, refer to "Basic Manual".

(Home screen (standard home))



Character entry

Use flick input or tap a key several times to enter characters.

In the character entry screen, [] → [Keitai Input] to enter characters with the same operations as cell phones.

Flick input

Long-touch a key to display enterable characters as shown in the right. Flick to the direction of the character to enter.

Magnifying characters

To magnify characters of menu items etc. operate as follows.

Apps list → [Settings] → [Accessibility] → Turn "Large text" to ON

- Press and hold [] for 1 second or longer, then tap * [] * to magnify a desired part with "magnifier". To close the magnifier, tap * X * at the top of the magnifier.
- Alternatively, from Apps list → [Settings] → [Accessibility] → [Magnification gestures] to magnify the screen. For operation method, see the description on the screen.

Initial settings

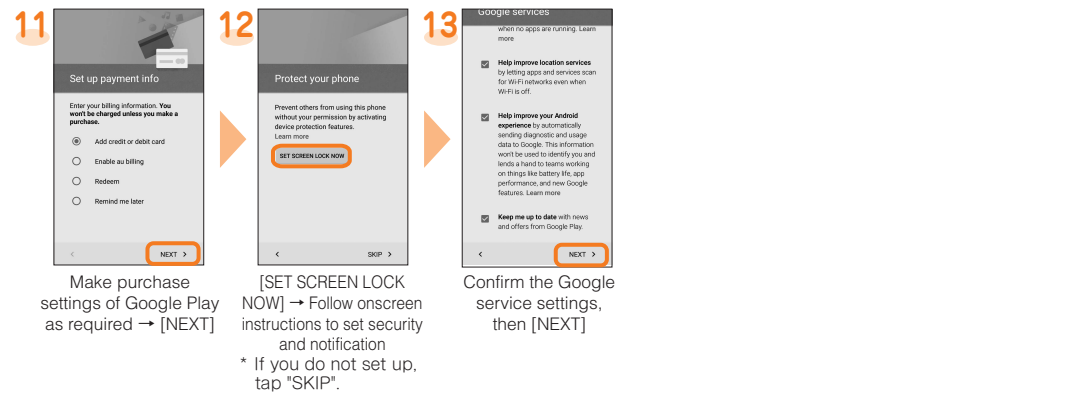
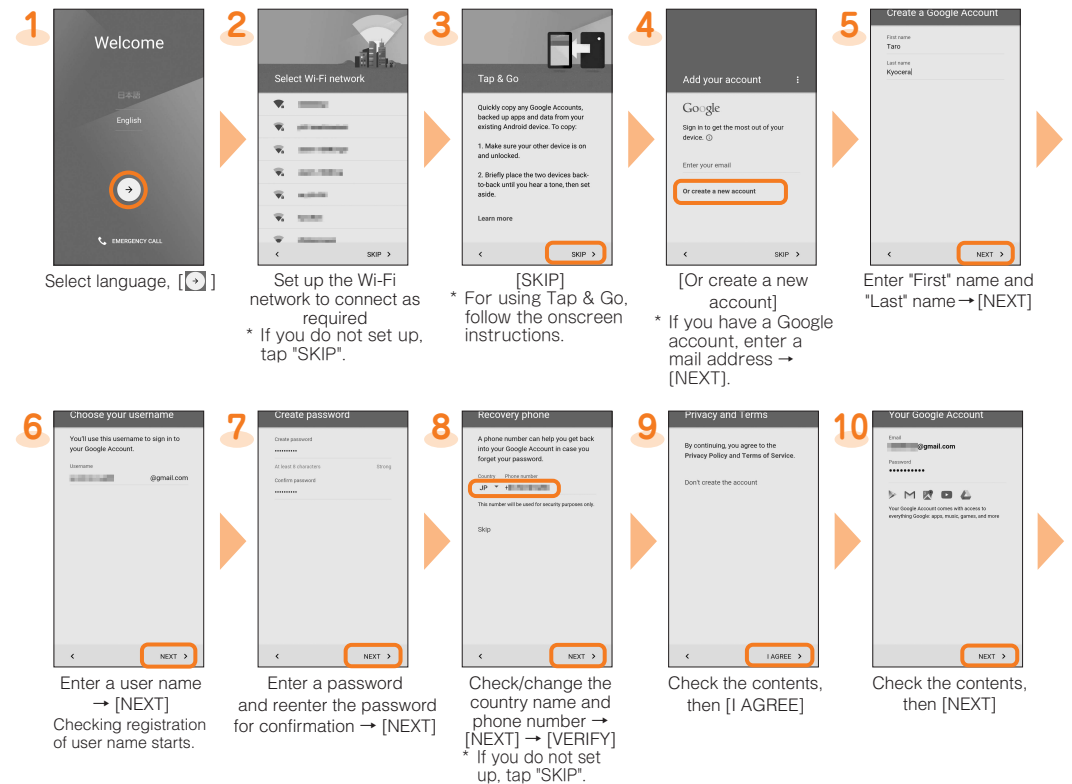
When you turn on the product for the first time after purchasing the product, follow the onscreen instructions to set language, functions and services.

Setting up Google account

Set up Google account to use Google applications such as "Gmail", "Play Store", "Hangouts".

Setting items are as below (besides the items below, register "First" name and "Last" name).

User name	Register your Google account (user ID) and a character string for mail address. You can register a desired name, but a name already registered by another user cannot be set.
Password	Register password for the Google account.



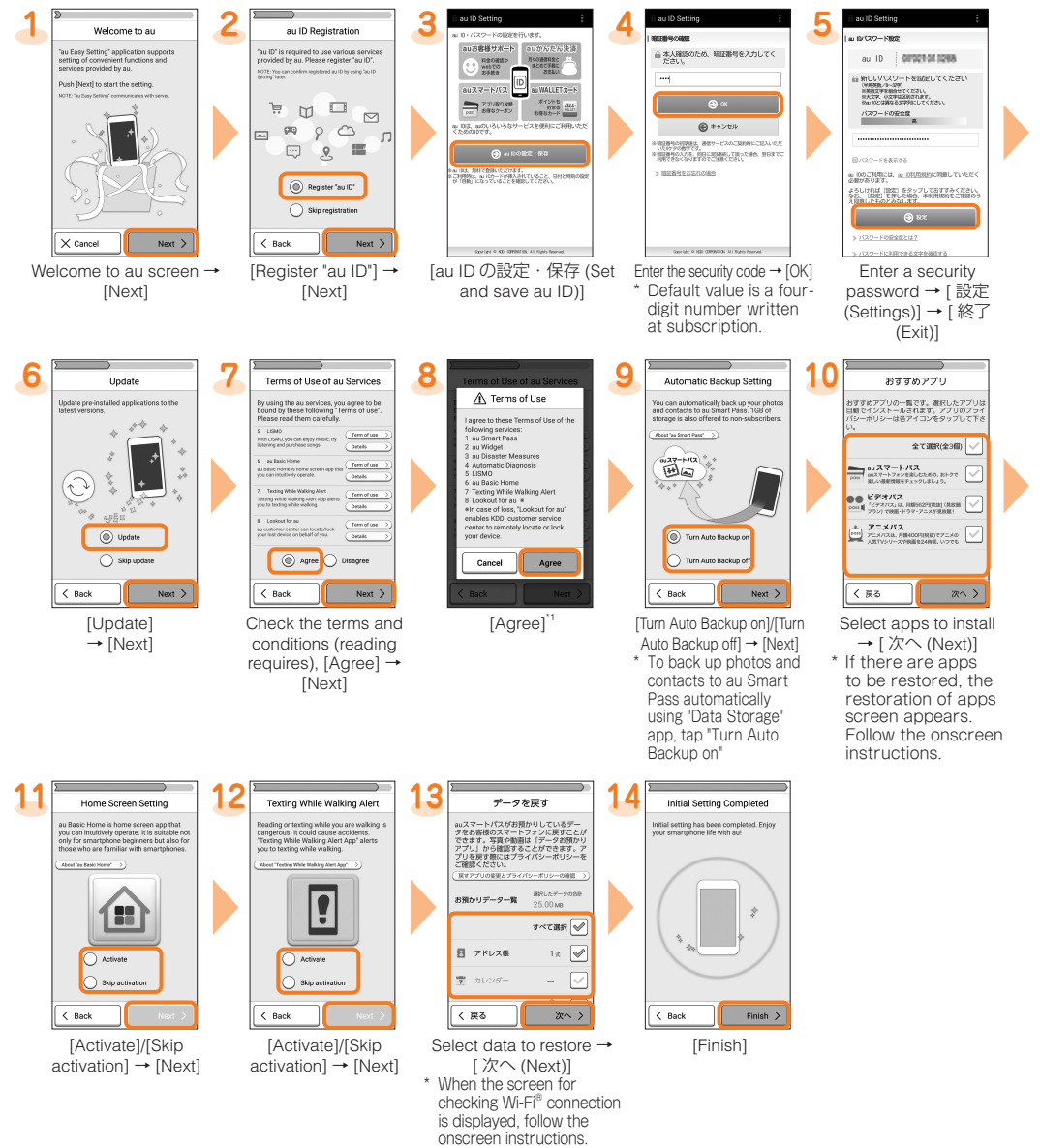
au Easy Setting

By setting au ID, you can use various services provided by au such as "au Kantan Kessai" which allows you to purchase applications from the auスマートパス (au Smart Pass) or Google Play. Main setting items are as follows.

au ID*	Register your au phone number or a character string for au ID (user ID).
au ID password	Register password for using au ID.

* "au ID" which is already used by another user cannot be set.

- If you skip the operation of "au Easy Setting" at that time, you can set au ID later. In that case, operate from Apps list → [Settings] → [au Settings Menu] → [au Easy Setting], or from Apps list → [au ID Setting]



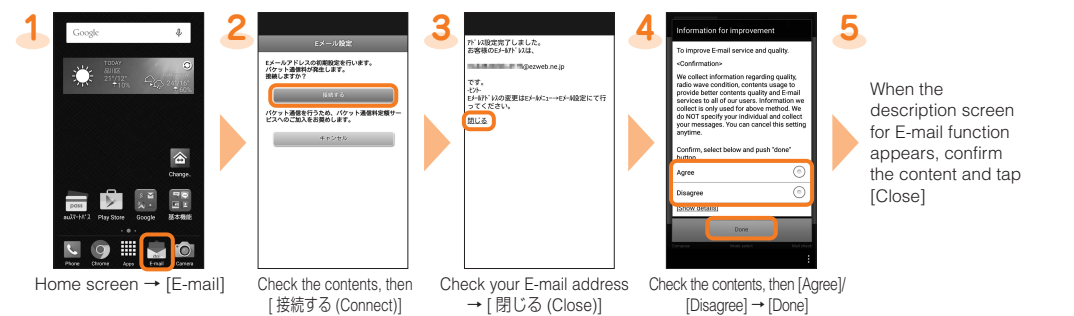
*1 Configurations for LISMO and Lookout for au are complete when you tap "Agree".

E-mail

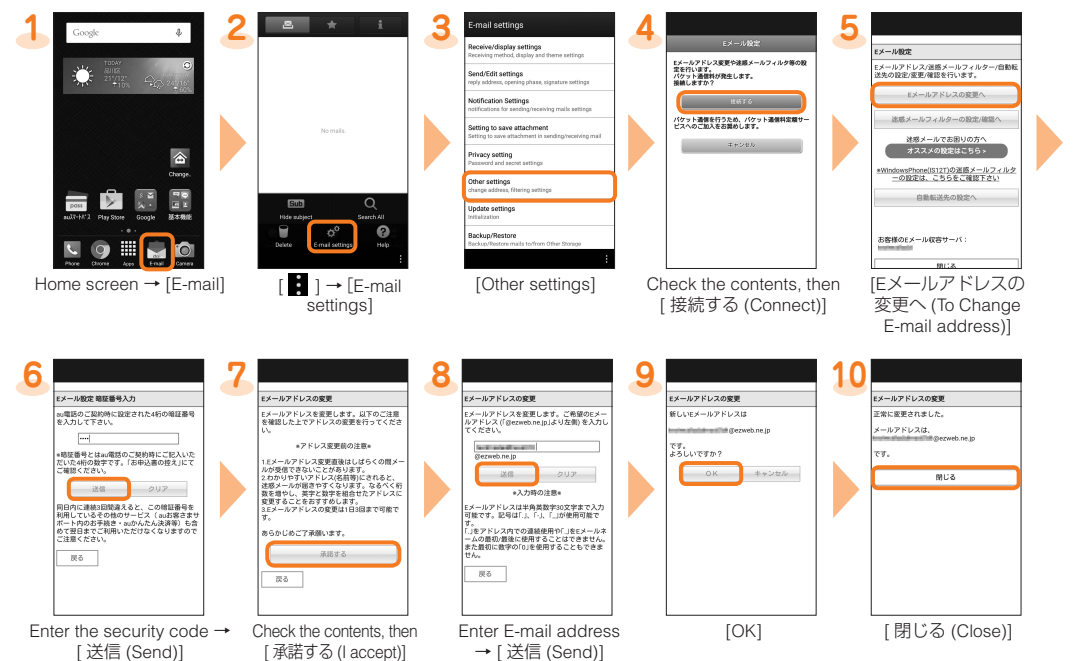
To use E-mail (@ezweb.ne.jp), subscription to LTE NET* is required.

If you did not subscribe it when you purchased the product, contact an au shop or Customer Service Center.
Your E-mail address is determined automatically after initial setting. You can change the E-mail address later.

Initial settings



Changing your e-mail address



■ Backing up E-mail

You can back up E-mail.
Backed up data is saved on a microSD™ memory card (/SD card/private/au/email/BU/) when a microSD™ memory card is attached. If a microSD™ memory card is not attached, data is saved on the internal storage (/Internal storage/private/au/email/BU/).

1

Home screen → [E-mail]

2

[E-mail settings]

3

[Backup/Restore]

4

[Mail Backup] → Confirm the notes and [OK]

5

Select a character code to make backup data → [OK]

6

Select a mail type to back up → [OK]

PC-mail settings

You can use mail addresses except for E-mail (@ezweb.ne.jp). You need to set up a PC-mail account to use PC-mail. For the first time use, make settings as follows.
Apps list → [PC mail] → [Move to Gmail app] → Follow the onscreen instructions.

- When Gmail inbox appears after "Move to Gmail app", [Menu] → [Settings] → [Add account] → [Personal (IMAP/POP)] → [OK] to make settings.

Making a call

■ Adding new contact and making a call

1

Apps list → [Contacts] → Tap "CONTACTS" tab

2

Contacts list screen → [ADD] → Enter necessary items → [SAVE]
* When "ADD" is not displayed, [CREATE A NEW CONTACT] → [Phone]/[ADD NEW ACCOUNT], then follow the onscreen instructions to register a contact/account.

3

[Phone icon]

1

Home screen → [Phone] → Tap "OUTGOING"/"INCOMING" tab

2

[Phone icon] of a party to call

Checking your own phone number (Profile)

Operate as follow to check your own phone number.
Apps list → [Settings] → [Profile] → Profile screen appears.

Changing your E-mail address

Your E-mail address can also be checked on profile screen.
If you make initial settings for [E-mail] app as follows, the E-mail address of E-mail (@ezweb.ne.jp) can be automatically registered to profile screen.
Home screen → [E-mail] → [接続する (Connect)] → [閉じる (Close)] → [Agree]/[Disagree] → [Done] → [Close] → The e-mail address is registered to the profile screen.

Receiving a call

You can receive a call in the following steps.
* "Display the popup on an incoming call" is set to "ON" in Sync Call settings by default. When you set it "OFF", in sleep mode, or when the start screen is displayed, follow the onscreen instructions.

■ Calling

1

Receiving screen → [Accept]

2

Calling starts

3

To end the call, [END]

■ Answering with Auto answering

Answer by the answering memo message and record a message of the party when you cannot answer calls.

1

Receiving screen → [Phone Screen]

2

Drag the operation panel down

3

[MENU] → [Reply Auto answering]

4

The caller hears the guidance.

5

To answer the call, slide right from the bottom bar

Saving battery power

Use "Eco Mode" to set sleep time of backlight or screen brightness to the minimum value. Set to enable/disable Auto-rotate screen, Wi-Fi®, MaxiMZR, Bluetooth®, Location access, Reader/Writer, P2P, use of Pedometer, CPU clock restriction, Data communication, etc. so that you can extend standby time.

1

Apps list → [Eco Mode]

2

[OFF]

Tap "ON" to check or change the battery saving items.

Setting Wi-Fi®

Use your home Wireless LAN (Wi-Fi®) or public wireless LAN to connect to the Internet.
Main settings are as follows.

Wi-Fi Easy Settings	Answer to the questions on the screen or follow the instructions to register an access point easily.
WPS system	Use for registration of access point compatible with Wi-Fi Protected Setup™ with WPS mark.

* If you turn on wireless LAN (Wi-Fi®) function, battery consumption increases. You are recommended to turn wireless LAN (Wi-Fi®) function to OFF when not using wireless LAN (Wi-Fi®) function.

1

Apps list → [Settings]

2

[Wi-Fi]

3

[Wi-Fi]

Available Wi-Fi networks are listed. Select a Wi-Fi network to connect → Enter a password as required → [CONNECT] to connect the Wi-Fi network.
If an access point you want to connect cannot be detected, operate from [Menu] → [Add network] and connect the Wi-Fi network manually.

4

[Wi-Fi Easy Settings]

5

Answer the questions on the screen and follow the instructions to register an access point.

Using Wi-Fi Easy Settings

4

[Wi-Fi Easy Settings]

5

Answer the questions on the screen and follow the instructions to register an access point.

Using WPS system access point

4

[Advanced] → [WPS Push Button]/[WPS Pin Entry]

5

For using WPS button, tap "WPS Push Button" and then keep pressing WPS button of access point to set to WPS mode. An access point is automatically detected and registration starts.
For entering WPS PIN, tap "WPS Pin Entry" and enter displayed PIN code for access point, then registration starts.

Viewing/playing data

By transferring data from the previously used au phone to a microSD™ memory card, you can view/play still image or movie data using "File Commander" in the product. When you activate for the first time, the Terms and Conditions appears. Follow the onscreen instructions.
* Copyrighted data on the previously used au phone cannot be transferred to the product. However, some Chaku Uta Full®, Video Clip, Chaku Uta Full Plus® may be able to be transferred and played on the product with the same phone number by backing up with LISMO Port Ver 4.2 or later.

1

Apps list → [File Commander]

2

Tap a category to be displayed → Tap data Data is played.

Infrared communication

Use infrared communication to send/receive profile or various data between the product and other devices.

1

Apps list → [Infrared]

2

Select an item to operate

3

To receive data, select "Infrared" and point the infrared data port of the product to the infrared data port of the other device.
To send, select "Send profile"/"Send contacts"/"Send file", select data to send for sending contacts/file → [OK], and then point the infrared data port of the product to the infrared data port of the other device.
* For sending data from File Commander, tapping "OK" operation is not needed.

- When NFC function is enabled, a caution screen appears. Follow the onscreen instructions.
- When authentication code entry screen appears, enter authentication code (four-digit number) → [OK].

Transferring data from au Settings Menu

Restore/back up data to/from the product from/to your previously used au phone via au Smart Pass server.

- Setting au ID is required for restoring/backing up data using au Smart Pass server
- For restoring data using microSD memory card, save the data to the microSD memory card using your previously used au phone in advance.

1

Apps list → [Settings]

2

[au Settings Menu]

3

[Data Transfer]

4

[データを保存する (Back up data)]/[データを戻す (Restore data)]

■ Restoring data from au Settings Menu

5

Select a method for restoring data
* Setting au ID is required for restoring data from "au スマートパスから戻す (Restore from au Smart Pass)".

6

When "SD カードから戻す (Restore from SD card)" is selected, select a type of your previously used au cell phone
* Not appeared when "au スマートパスから戻す (Restore from au Smart Pass)" is selected in step 5.

7

When "SD カードから戻す (Restore from SD card)" is selected
Select data to restore → [戻す (Restore)] → [完了 (Done)]
* It is the screen for selecting "スマートフォンのデータを戻す (Restore data from smartphone)".

When "au スマートパスから戻す (Restore from au Smart Pass)" is selected
Select data to restore → [戻す (Restore)] → [完了 (Done)]

■ Saving data from au Settings Menu

5

Select a saving location
* Setting au ID is required for saving data from "au スマートパスに預ける (Back up to au Smart Pass)".

6

When "SD カードに預ける (Back up to SD card)" is selected
Select data to save → [保存する (Save)] → [完了 (Done)]

7

When "au スマートパスに預ける (Back up to au Smart Pass)" is selected
Select data to back up → [預ける (Back up)] → [完了 (Done)]

Using "Data Storage" app

To use "Data Storage" app to back up photos and contacts to au Smart Pass server automatically, set as follows.
Apps list → [Settings] → [au Settings Menu] → [Backup Setting] → Turn on "定期的に自動で預ける (Back up periodically)"