

au

XPERIA XZ2 SOV37

Setting Guide

Thank you for buying "Xperia XZ2" (simply called the "product" from here on). In this guide, settings and precautions for using the product are described.

Using the Online Manual

Check "Online Manual" (Japanese) which describes detail explanations on various functions on the product from the following procedure.



- Also, you can check "Online Manual" (Japanese) on the au homepage. <https://www.au.com/online-manual/sov37/>

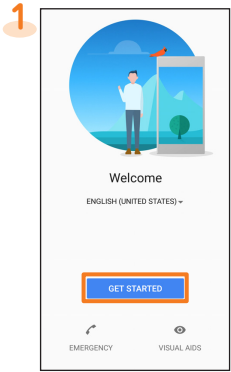
Company names and product names referred to in this manual are trademarks or registered trademarks of respective companies.
The TM, ® marks may be omitted in this manual.
Screen illustrations shown in this manual may look different from the actual screens. In some cases, minor details or a part of a screen may be omitted.
In this manual, the contents on Android 8.0 are provided.

June 2018, 1st Edition
Sold by: KDDI CORPORATION, OKINAWA
CELLULAR TELEPHONE COMPANY
Manufactured by: Sony Mobile Communications Inc.

Initial settings

When "ようこそ (Welcome)" appears after the product is powered on, follow the onscreen instructions to set functions and services.

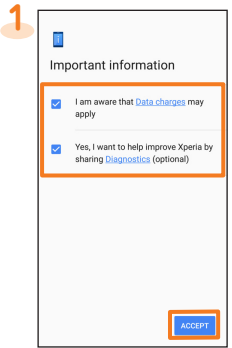
STEP 1: Start of setting



[GET STARTED]

- To change the language, tap "日本語 (Japanese)" to open the language list, select "English"→"United States".
- When you tap "VISUAL AIDS", the setting of accessibility functions can be made.
- Alternatively, after the initial setting is complete, from the Home screen, tap [⚙️]→[設定 (Settings)]→[システム (System)]→[言語と入力 (Languages & input)]→[言語 (Languages)]→[言語を追加 (Add a language)] and select "English"→"United States", and then drag ≡ of "English (United States)" up to the top in the language list.
- To set the accessibility function after the initial settings is complete, from the Home screen, [⚙️]→[Settings]→[Accessibility].

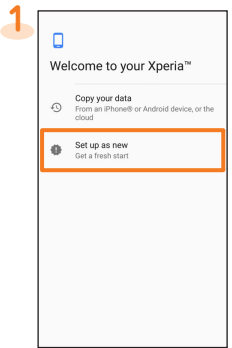
STEP 2: Setting/Checking the important information



Confirm contents/setting^{*1}
→[ACCEPT]

- ^{*1} Tap "Data charges" and "Diagnostics" to confirm the contents and the setting for providing Diagnostics.
- Alternatively, after the initial setting is complete, set from the Home screen, [⚙️]→[Settings]→[System]→[About phone]→[User info settings].

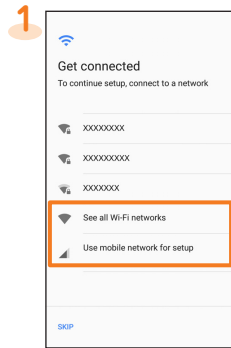
STEP 3: Selecting setup method



[Set up as new]

- To use the data of the other Android phone etc. successively, tap "Copy your data" and then follow the onscreen instruction.

STEP 4: Setting up the network connection



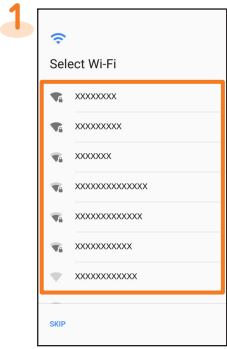
Select the method of connecting network

- When you select "Use mobile network for setup", tap "CONTINUE" to proceed to "STEP 6".
- To make settings requiring network connection such as Google account etc. later, [SKIP]→[CONTINUE], then follow the onscreen instructions.

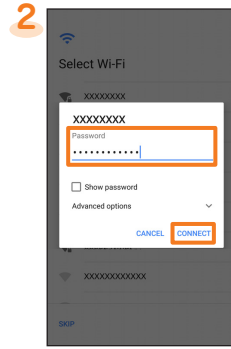
STEP 5: Setting Wi-Fi® connection

You can use a home wireless LAN (Wi-Fi®) or public wireless LAN to access the Internet services. Operate in a place where signal of Wi-Fi® network can be received.

- Wi-Fi® network with is an open network.
- Wi-Fi® network with is protected by security. To connect, enter a password (security key).



Select a Wi-Fi® network



Enter a password (security key)^{*1}
→[CONNECT]

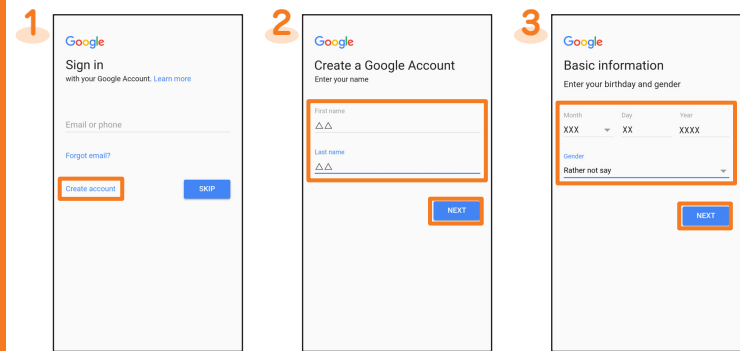
- ^{*1} When you select a Wi-Fi® open network, a password entry screen does not appear.

- To add a Wi-Fi® network manually, in step 1, tap "Add network" and enter a network name (SSID), etc.→[SAVE]. Check the necessary information for the connection in advance.
- To make advanced setting of Wi-Fi®, after the initial setting is complete, from the Home screen, [⚙️]→[Settings]→[Network & Internet]→[Wi-Fi]→[Wi-Fi preferences].

STEP 6: Setting up a Google account

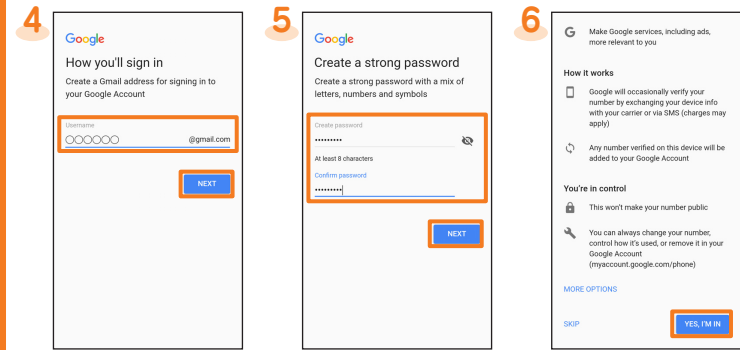
Set up a Google account so that you can synchronize with Gmail, contacts of online service, calendar, etc. Setting for creating a new Google account is explained here.

- If you set up a Google account, you can use Google apps such as "Gmail" or "Google Play".
- Gmail mail address "(user name) @gmail.com" is automatically created from the user name set with a Google account.
- Although you can use the product without setting a Google account, some apps using Google account cannot be used. When you activate the app, the setup screen for Google account appears.



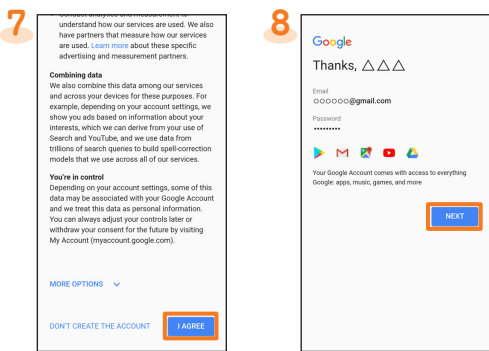
[Create account]^{*1}
Enter "First name", "Last name"→[NEXT]
Enter your birthday and gender→[NEXT]

- ^{*1} When you have your Google account, enter the Gmail mail address or the phone number and tap "NEXT", and then follow the onscreen instructions. If the selection items of "For myself"/"For my child" appear, select "For myself".



Enter a user name →[NEXT]^{*2}
Enter a password →[NEXT]
[YES, I'M IN]^{*3}

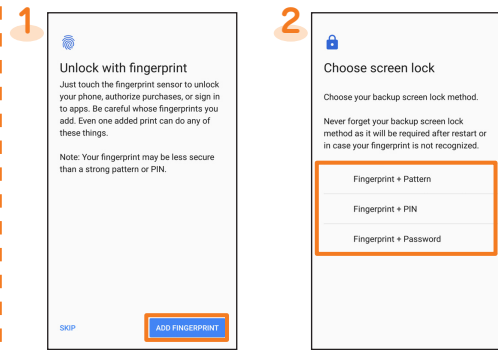
- ^{*2} Checking registration of username starts. If the username is unavailable, username suggestions appear.
- ^{*3} To change the method of adding a phone number, tap "MORE OPTIONS" and then follow the onscreen instruction.



Confirm the Privacy Policy and Terms of Service →[I AGREE]

STEP 7: Setting the unlock method of using fingerprint

Set whether to use the fingerprint authentication function. Before registering a fingerprint, set the screen lock unlock method.



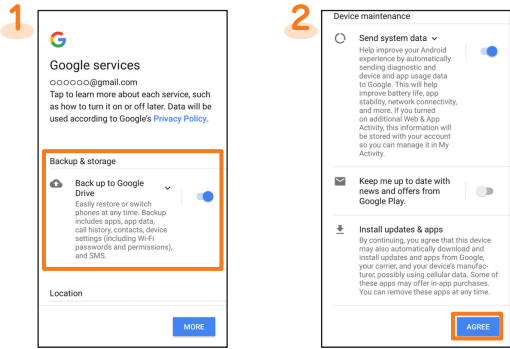
[ADD FINGERPRINT]^{*1}
Select the screen lock→Follow the onscreen instructions

- ^{*1} If you do not want to register your fingerprint, [SKIP]→[SKIP ANYWAY].

- Alternatively, after the initial settings, operate from the Home screen, [⚙️]→[Settings]→[Lock screen & security]→[Fingerprint Manager]/[Screen lock] to set.

STEP 8: Setting Google services

Set the Google services such as backup etc.

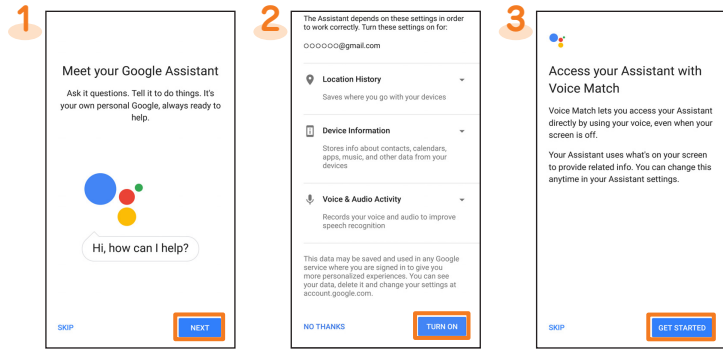


Confirm/change each setting

- Alternatively, after the initial settings, from the Home screen, [⚙️]→[Settings]→[System]→[Backup].

STEP 9: Setting up Google Assistant

Set the permissions for Google Assistant or access by voice (Voice Match).



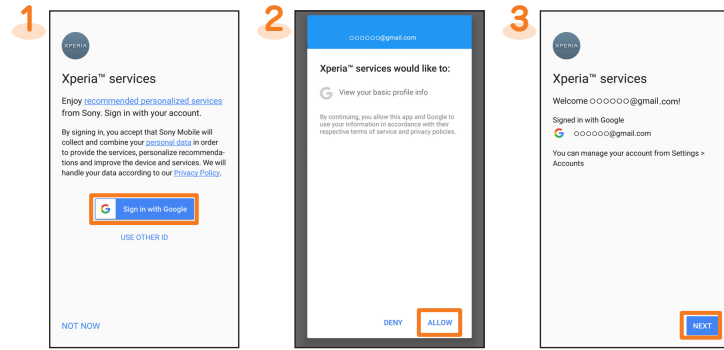
[NEXT]^{*1}
Confirm the permissions→[TURN ON]^{*2}
[GET STARTED]^{*3}→Follow the onscreen instruction

- ^{*1} To not set anymore, tap "SKIP".
- ^{*2} When you tap "NO THANKS", proceed to STEP 10.
- ^{*3} To not set anymore, tap "SKIP" and then follow the onscreen instructions.

- When Google account is not set, the setting of Google Assistant is not displayed.

STEP 10: Setting Xperia services

Sign in for using Xperia services.

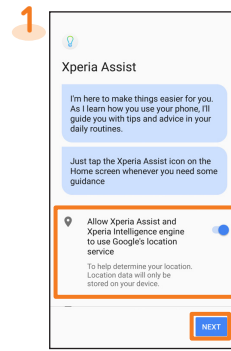


[Sign in with Google]^{*1}
[ALLOW]
[NEXT]

- ^{*1} When you sign in with other account, [USE OTHER ID]→Select the account→Follow the onscreen instructions. If you do not sign in, [NOT NOW]→[SKIP].

STEP 11: Setting Xperia Assist

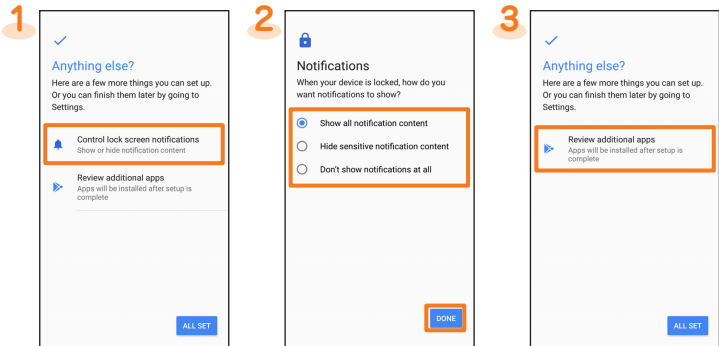
Set whether to permit the location information service of Google.



Confirm/change each setting→[NEXT]

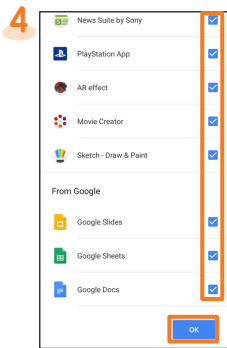
STEP 12: Setting up more things

Select apps to add. When you set the fingerprint authentication or screen lock unlock method, set the notification for the lock screen.



[Control lock screen notifications]^{*1}*2
[Review additional apps]^{*2}

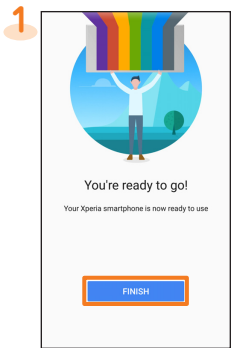
- *1 Does not appear if you do not set the fingerprint authentication or screen lock unlock method.
*2 To end without setting more items, tap "ALL SET".



Unmark apps not to add→[OK]

- Downloading for adding apps starts when Wi-Fi® is connected. For mobile network, downloading is temporarily stopped and resumed when Wi-Fi® is connected after the initial settings. After the initial settings, slide the status bar down→Open the notification of "Setup paused"→[USE DATA] to download via mobile network.

STEP 13: Completion of setup

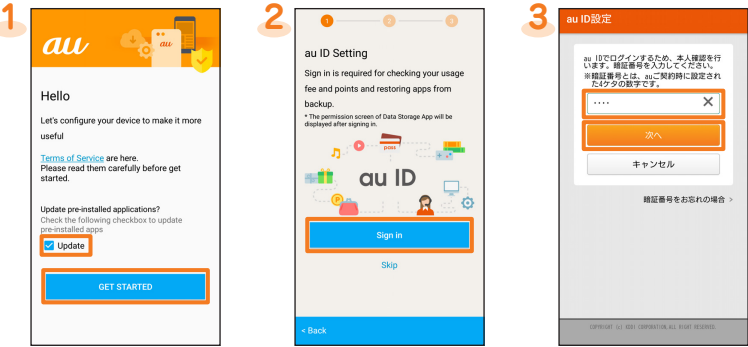


[FINISH]

au initial settings

Update preinstalled apps, setting au ID, download previously used apps, or make settings for using the product more convenient.

- By setting au ID, you can use various services provided by au such as au スマートパス (au Smart Pass) or "au Kantan Kessai", which allows you to purchase apps from Google Play.
● Alternatively, after the initial setting is complete, from the Home screen, tap [📱]→[Settings]→[au Settings]→[au Settings Menu]→[au Initial Setting].

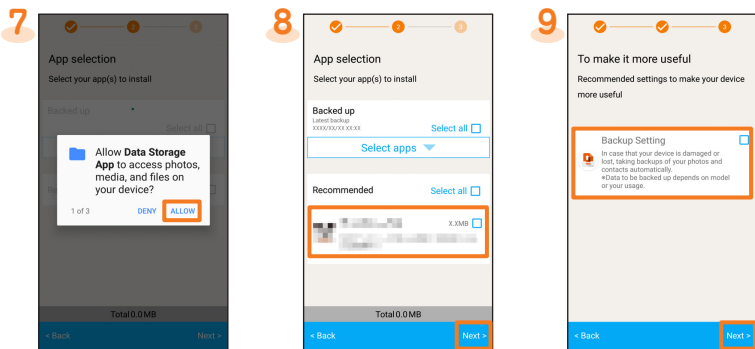


Mark/unmark "Update" →[GET STARTED]
[Sign in]^{*1}
Enter PIN number^{*2} →[次へ (Next)]

- *1 If you have already been registered au ID, step 3 and 4 will not appear. Proceed to step 5.
*2 PIN number is a four digit number chosen by the customer and noted on the application form.



Enter a password →[同意して次へ (Agree and proceed)]
[次へ (Next)]
[OK]



[ALLOW]^{*3}
Mark apps to install^{*4} →[Next]
Mark items to set →[Next]

- *3 The conformation screen for app permission appears several times. Operate in the same way.
*4 When "Select apps" appears in "Backed up", tap it to check the apps.

au-mail setting

- To use au-mail, subscription to LTE NET is required. If you did not subscribe it when you purchased the product, contact an au shop or Customer Service Center.
● Perform the initial settings in a place with good signal condition in Japan. If you perform in a place with bad signal condition or while moving, the settings may fail. The initial setting cannot be made via Wi-Fi® communication.
● Depending on time zone, the initial settings may take from 30 seconds to 3 minutes. Wait for a while with "Eメールアドレスの設定中です。しばらくお待ちください。 (Setting email address. Wait for a while.)" displayed on the screen.

Initial settings



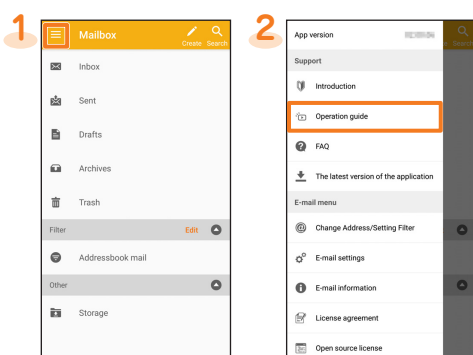
From the Home screen, [📱]→[E-mail information]
Confirm the content →[Agree]
→Follow the onscreen instructions to proceed
Check au-mail address →[閉じる (Close)]
→Confirm the content →[同意する (I Agree)]

- * For change of model, the au mail address which you have been used so far is displayed.

Checking au-mail address

- 1 From the Home screen, [📱]→[📧]→[E-mail information]

Checking the operations of au-mail app



From the Home screen, [📱]→[📧]
[Operation guide]

Changing au-mail address

- 1 From the Home screen, [📱]→[📧]→[Change Address/Setting Filter]
2 [メールアドレスの変更へ (To change Mail address)]→Enter the security code→[送信 (Send)]
3 Confirm the content→[承諾する (I agree)]→Mark "ご希望のメールアドレスに変更する (Change to your desired mail address)" and enter the mail address^{*1}→[送信 (Send)]→[OK]

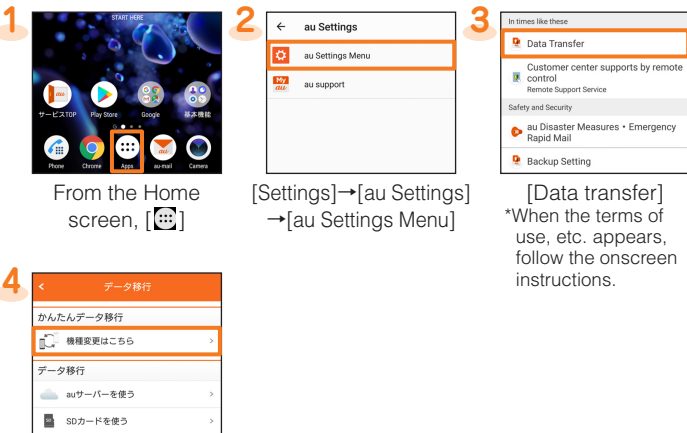
- *1 When you mark "〇〇〇〇〇〇@au.comへ変更する (Change to 〇〇〇〇〇〇@au.com)", only the domain name is changed from "@ezweb.ne.jp" to "@au.com". Mails received via the previous mail address are automatically forwarded to the new mail address (this item does not appear when you already use "@au.com").

- * When the confirmation screen appears, follow the onscreen instructions.
* The operations or the screen displays are subject to change without notice.

Transferring data from au Settings Menu

Import or export data between the product and your previous au mobile phone using microSD memory card or via the au server.

- To import data using the au server, save data to the au server using your previous au mobile phone in advance. To use the au server, set au ID (If there is no au Settings Menu on your previous au mobile phone, use "au Cloud" app).
● To import data using a microSD memory card, save the data to a microSD memory card using your previous au mobile phone in advance (If there is no au Settings Menu on your previous au mobile phone, use au backup app).

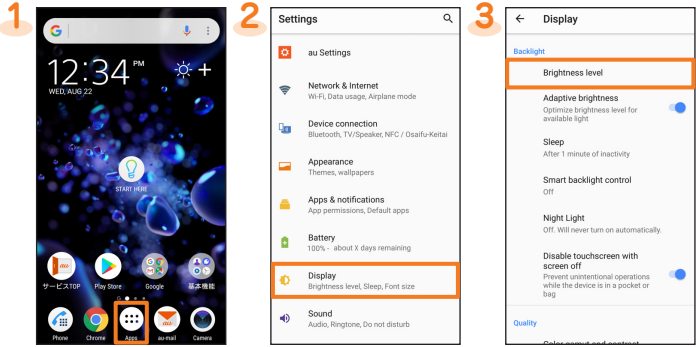


From the Home screen, [📱]
[Settings]→[au Settings] →[au Settings Menu]
[Data transfer]
*When the terms of use, etc. appears, follow the onscreen instructions.

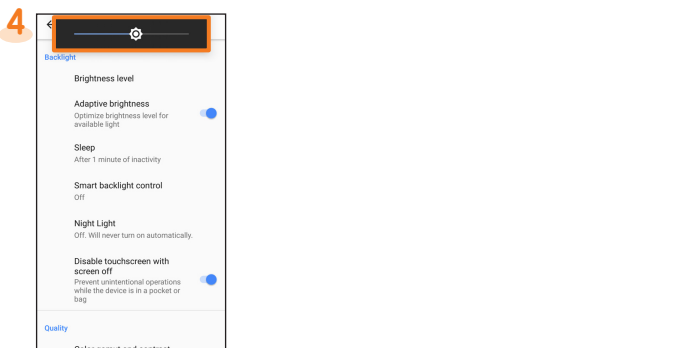
- To back up photos and contacts to the au server automatically using "Data storage App", operate as follows.
From the Home screen, [📱]→[Settings]→[au Settings]→[au Settings Menu]→[Backup Setting]→Mark items to back up automatically

Setting the brightness of the screen

When the screen is dark and you cannot see the screen well, adjust the screen brightness as you like.



From the Home screen, [📱]
[Settings]→[Display]
[Brightness level]



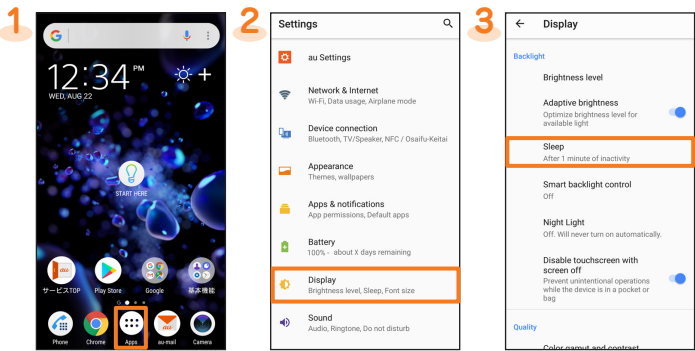
Drag the slider left or right

- * To finish the setting, tap [🔒].

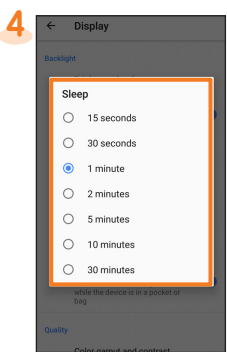
- To adjust the screen brightness automatically according to the ambient brightness based on the set value in "Brightness level", from the Home screen, [📱]→[Settings]→[Display]→Tap [🌞] of "Adaptive brightness" to switch to [🔵].

Setting the lighting time of the backlight

The screen backlight turns off automatically when the set time has elapsed while no operation is made. When you cannot operate readily because the backlight turns off soon, change the lighting time of the backlight.



From the Home screen, [📱]
[Settings]→[Display]
[Sleep]



Select the lighting time