

AQUOS sense3

SHV45

Setting Guide


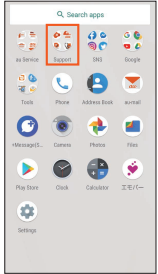
Thank you for buying the "AQUOS sense3 SHV45" (simply called the "product" from here on).

This manual describes settings for using the product.

- * For illustrations and descriptions in this manual, refer to "Basic Manual" available on the au homepage.
- * Descriptions in this manual are based on Android™ 9 Pie.
- * The company names and product names appearing in this manual are trademarks or registered trademarks of their respective holders.
- * Phone illustrations and screen shots are for descriptive purposes only, and may differ from the actual product.

October 2019, 1st Edition
Sold by: KDDI CORPORATION,
OKINAWA CELLULAR TELEPHONE COMPANY
Manufactured by: SHARP CORPORATION

Using "Online Manual" (Japanese)
You can check "Online Manual" (Japanese) that describes detailed of various functions by operating the product as follows.



On the home screen, swipe/ flick up the screen and display the "App list screen" → [Support].

[取扱説明書] (Online Manual) (Japanese).

Also, you can check "Online Manual" (Japanese) on the au homepage.
<https://www.au.com/online-manual/shv45/> (Japanese)

STEP4: Google service Settings etc.

Set other items such as Google service, screen unlock.

1

Device maintenance
Send usage and diagnostic data
Help improve your Android experience by automatically sending diagnostic, device, and app usage data to Google. This will help battery life, system and app stability, and other improvements. Some aggregate data will also help Google apps and partners, such as Android developers. If your additional data & app activity setting is turned on, this data may be saved to your Google Account.
Install updates & apps
By continuing, you agree that this device may also automatically download and install updates and apps from Google, your carrier, and your device manufacturer possibly using cellular data. Some of these apps may offer in-app purchases.
Tap "Accept" to confirm your selection of these Google services settings.
ACCEPT

2

Terminal lock
You can prevent unauthorized use by other users by configuring how to protect the terminal.
Face authentication
Unlock by scanning the lock screen with your registered face.
Fingerprint
Unlock by touching the fingerprint with your registered fingerprint.
Set both face and fingerprint authentication
Unlock either by face authentication or by fingerprint authentication.
Only pattern, lock No. and password available
SKIP

3

Text mom
Turn on these settings for the full Assistant experience. You can still get a limited Assistant experience without them.
xxxxxxx@gmail.com
Device Information
Stores info about contacts, calendars, apps, music, and other data from your device.
Voice & Audio Activity
Records your voice and audio to improve speech recognition.
This data may be saved and used in any Google service when you are signed in to give you more personalized experiences. You can see your data, delete it and change your settings at [assent.google.com](#).
TURN ON

4

Anything else?
Set up a few more things now, or find them later in Settings.
Add another email account
Change font size
Change wallpaper
The useful setting of the fingerprint sensor
NO THANKS

Confirm the contents of Google services → [ACCEPT].

[SKIP].^{*1}

Confirm the contents of Google Assistant → [TURN ON].

[NO THANKS].^{*3}

^{*1} To register face or fingerprints, select "Face authentication" / "Fingerprint" / "Set both face and fingerprint authentication" and follow the on-screen instructions.

^{*2} If a settings screen for Google Pay™ or other service is displayed, follow the on-screen instructions.

^{*3} To use each item, select it and follow the on-screen instructions.

STEP5: au初期設定 (au Initial Setting)

You can use various services provided by au such as au Smart Pass and "au Simple Payment Service" in which you can purchase applications displayed on Google Play™ by setting an au ID.

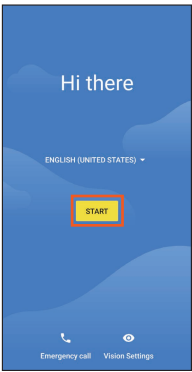
au ID	Register your au phone number as an au ID.
au ID password	Register the password for using your au ID.
Security code	The four-digit security code you wrote on the application form.

Initial Settings

The Google™ initial settings screen is displayed automatically when you turn the power on for the first time. Follow the on-screen instructions to set each function.

STEP1: Language Setting

1



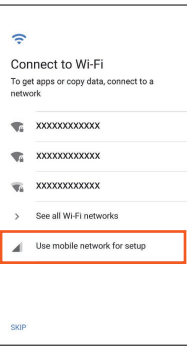
Select the language → [START].

STEP2: Wi-Fi® Connection/Data Transfer Settings

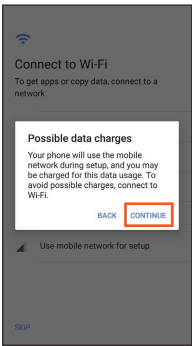
You may skip the steps here for making Wi-Fi® Connection/transferring data from another device settings.

By using "Copy apps & data", you can transfer data from an old device etc.

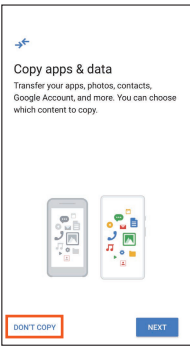
1



2



3



[Use mobile network for setup].

Confirm the contents and [CONTINUE].

[DON'T COPY]*.

^{*} To transfer data from another device, select "NEXT" and follow the on-screen instructions.

STEP3: Google Account Settings

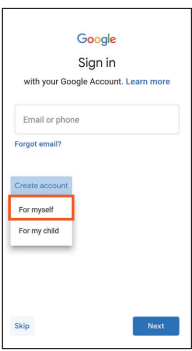
You can use applications provided by Google Inc. such as "Play Store" and "Calendar" by setting up a Google account. You can use the product without a Google account set, but in such case some applications are not available.

The main setting items are as follows.

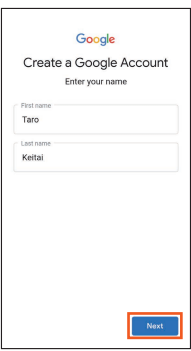
Username	Register your Google account (user ID) and any characters which you want to use as a mail address. You can register any user name but you cannot set the same user name as another user's.
Password	Register the password for using your Google account.

- The Google account setup screen is displayed when you also activate an application for which a Google account is required for the first time.
- Depending on how you operate, screens other than those below may be displayed.

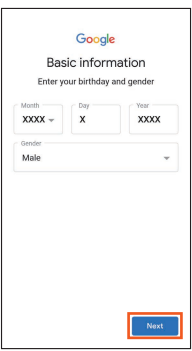
1



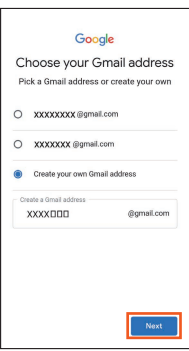
2



3



4




[Create account]^{*1} → [For myself].

Enter your "First name" and "Last name" → [Next].

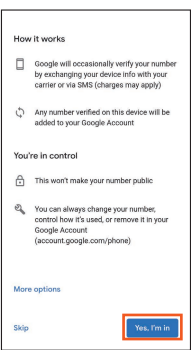
Enter basic information → [Next].

[Create your own Gmail address]^{*2} → Enter the Gmail address → [Next].

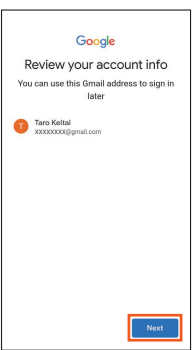
5



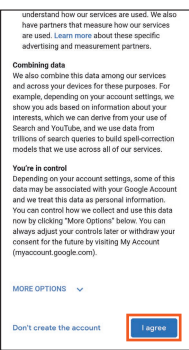
6



7



8



Enter the password → [Next].

Confirm the contents → [Yes, I'm in].

[Next].

Confirm the contents → [I agree].

^{*1} If you already have a Google account, enter the e-mail address.

^{*2} You can also select a Gmail address you already have.

1



2



3



4



[GET STARTED].^{*1}

[Sign in].

Enter the security code → [次へ] (Next).^{*2}

Enter the password → [同意して次へ] (Agree).^{*2}

5



6



7



8



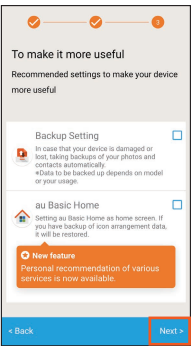
[次へ] (Next).

[OK].

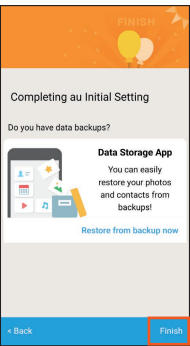
[ALLOW].^{*3}

Mark the applications to install → [Next].

9



10



Confirm the contents and mark the item to set up → [Next].^{*4}

[Finish].^{*5}

^{*1} When updating apps in the product, mark "Update".

^{*2} The input screen is displayed only when registering au ID for the first time.

^{*3} The confirmation screen for app permissions is displayed several times. Operate in the same way.

^{*4} To use the "Data Storage" application and automatically store photos and address book entries to the au server, mark "Backup Setting".

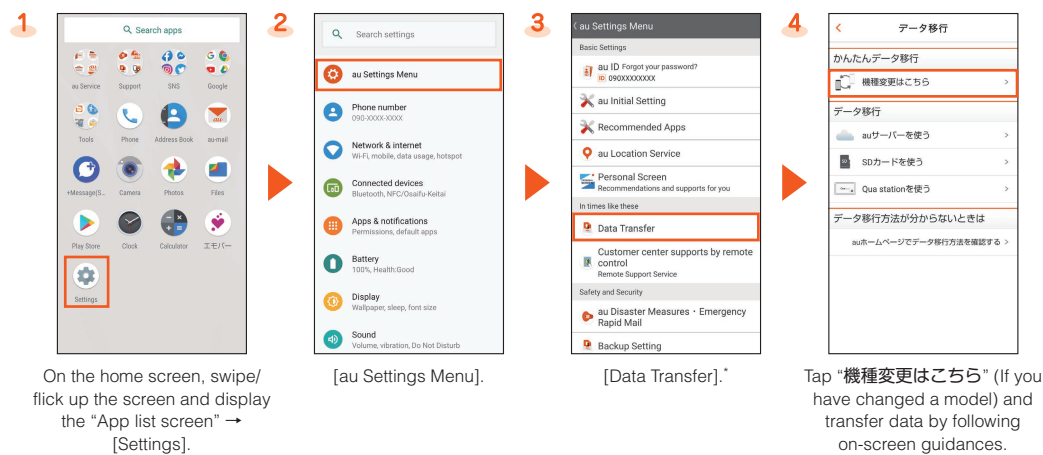
^{*5} Data stored with the "Data Storage" application can be restored. Tap "Restore from backup now" and follow the on-screen instructions.

- On the home screen, swipe/flick up the screen and display the "App list screen" → [Settings] → [au Settings Menu] → [au Initial Setting].

How to Transfer Data with the au Settings Menu

You can return/store data from an old au phone to this product using a microSD™ memory card or au server. To protect important data, be sure to save (back up) data periodically to a microSD™ memory card or au server.

- To return data using an au server, store data from the old au phone to the au server beforehand. To use the au server, you must set an au ID. (If the old au phone does not have au Settings Menu, use au Cloud application).
- To return data using a microSD™ memory card, save the data from the old au phone to the microSD™ memory card beforehand. (If the old au phone does not have au Settings Menu, use the au backup application.)



* If a confirmation screen is displayed for terms of use/privacy policy, follow the on-screen guidances.

Automatically Storing Photos and Address Book Entries

Use the following steps to set automatic storage of photos and address book entries to the au server using the "Data Storage" application.

- On the home screen, swipe/flick up the screen and display the "App list screen" → [Settings] → [au Settings Menu] → [Backup Setting] → Select the type of data to store automatically.

au-mail Settings and Changing au-mail Address

au-mail is a service which enables you to exchange e-mails with other cell phones which support e-mails and with PCs. An e-mails address is set automatically in the initial settings. You can change the e-mails address set in the initial settings.

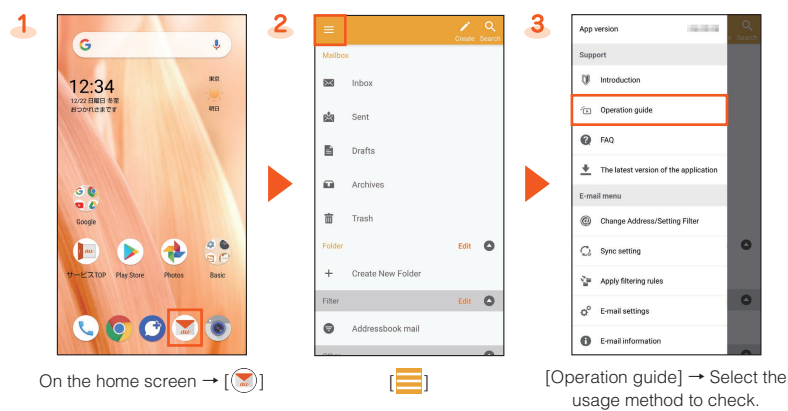
- You cannot make the initial settings via Wi-Fi® communication.

Initial Settings

If you have changed a model, an au-mail address from an old au phone is displayed.



Checking the Usage Method of au-mail Address



Changing au-mail Address

- 1 On the home screen → [au-mail] → [≡] → [Change Address/Setting Filter].
- 2 [メールアドレスの変更へ] (To change mail address) → Enter the security code → [送信] (Send).
- 3 Confirm the contents → [承諾する] (Accept).
- 4 [ご希望のメールアドレスに変更する] (Change to your desired mail address) → Enter an au-mail address → [送信] (Send).
- 5 [OK] → [閉じる] (Close).

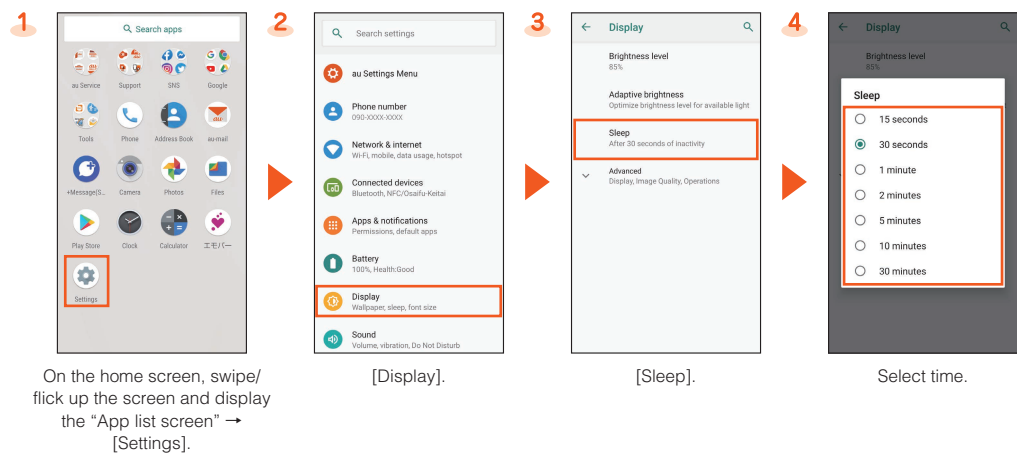
Checking au-mail Address

- 1 On the home screen → [au-mail] → [≡] → [E-mail information].
- You can check your au-mail address.

When the confirmation screen is displayed, follow the on-screen instructions. Operations and displayed contents are subject to change without notice.

Increase the light duration of the backlight

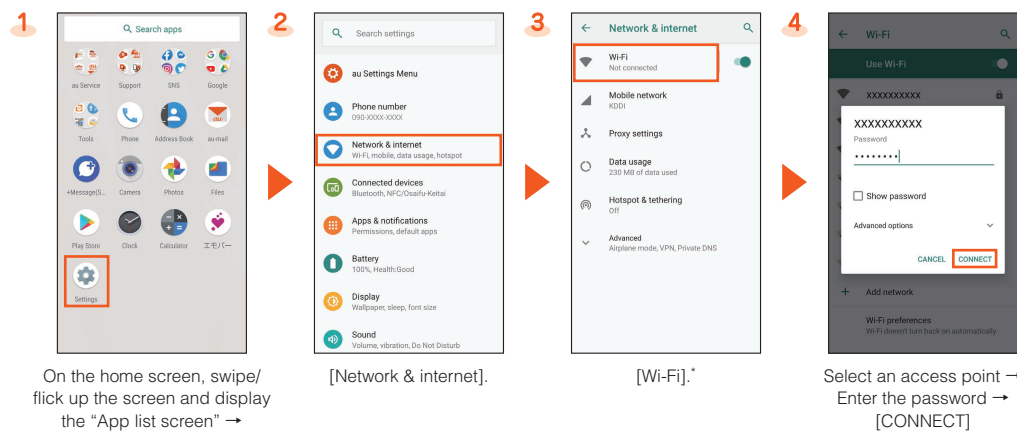
When the screen is dark/the backlight is quickly turned off, change the setting.



Wireless LAN (Wi-Fi®) settings

You can connect to an Internet service via a household wireless LAN (Wi-Fi®) environment or a public wireless LAN environment when out and about.

To connect to an Internet via Wi-Fi®, you need to register an access point to connect in advance. For detailed Wi-Fi® settings, refer to the "Online Manual" (Japanese).



* When [Wi-Fi] is disabled, switch to enable it.

Performing a Periodic Diagnosis

It is recommended that you perform a diagnosis for trouble-free smartphone use.



* When the confirmation screen is displayed, check the displayed contents and follow the on-screen instructions.

Setting a Regular Cleaning Notice

Set a "regular cleaning notice" to let you know regularly when it is time for a diagnosis.



*1 When the confirmation screen is displayed, check the displayed contents and follow the on-screen instructions.

*2 When a notice is displayed, use "クイック診断してみる" (Try quick diagnostic) to perform a diagnosis.