

AQUOS R2

SHV42

Setting Guide

Thank you for buying the "AQUOS R2 SHV42" (simply called the "product" from here on). This manual describes settings for using the product.

- * For illustrations and descriptions in this manual, refer to "Basic Manual" available on the au homepage.
- * Descriptions in this manual are based on Android™ version 8.0.
- * The company names and product names appearing in this manual are trademarks or registered trademarks of their respective holders.
- * Phone illustrations and screen shots are for descriptive purposes only, and may differ from the actual product.

June 2018, 1st Edition
Sold by: KDDI CORPORATION,
OKINAWA CELLULAR TELEPHONE COMPANY
Manufactured by: SHARP CORPORATION

Using "Online Manual" (Japanese)

You can check "Online Manual" (Japanese) that describes detailed of various functions by operating the product as follows.



On the App list screen, [取扱説明書] (Online Manual) (Japanese). [Support].

Also, you can check "Online Manual" (Japanese) on the au homepage.
<https://www.au.com/online-manual/shv42/>



濡れた状態での充電は、異常な発熱・発煙などの原因となり大変危険です。

When using the product

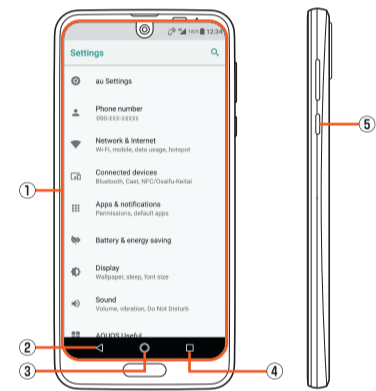
- The battery is built into the product, and cannot be removed by the customer.
- To force the power off, hold **[Power]** down for 8 or more seconds (Release your finger after the product vibrates to turn the power off).

Basic Operations

For detailed operations, refer to the Online Manual (Japanese).

You can switch the display language for function names and other items to English.

- On the home screen → "App list screen" → [設定] (Settings) → [システム] (System) → [言語と入力] (Languages & input) → [言語] (Languages) → [言語を追加] (Add a language) → [English] → [United States] → Long touch "English (United States)" and drag it to the top of the list.

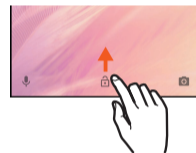


- ① Display: Touch it directly with your fingers to operate.
- ② **[Back key]**: Tap it to return to the previous screen.
- ③ **[Home key]**: Tap it to display the home screen.
- ④ **[Recent Apps key]**: Tap it to display Recent Apps screen.
- ⑤ **[Power key]**: Hold it down to turn the power on. Hold it down while the power is turned on → [Power off] to turn it off.

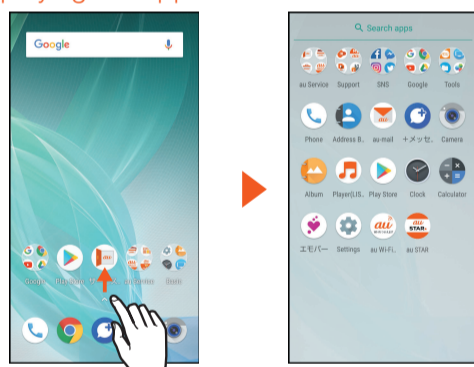
Unlocking the screen

Unlock the screen by swiping "☞" up.

- If a password, etc. is set for the screen lock, it is displayed as "🔒".



Displaying the App list screen



On the AQUOS Home screen, swipe the screen up. The app list screen is displayed.

App Permissions Settings

When you activate applications/functions to access to the function or information of the product for the first time, the confirmation screen for requesting the permission of access authority is displayed.

When the confirmation screen is displayed, check the displayed contents carefully and follow the on-screen instructions.

- The explanation screen for permissions may be displayed depending on the applications/functions.

Also, multiple confirmation screens may be displayed or the displayed contents may differ. Check the displayed contents carefully and follow the on-screen instructions.

If you deny the permission, the application/function may not be activated or the use of function may be restricted.

- In this manual, some description of the confirmation screens may be omitted.

Initial Settings

The Google™ initial settings screen is displayed automatically when you turn the power on for the first time. Follow the on-screen instructions to set each function.

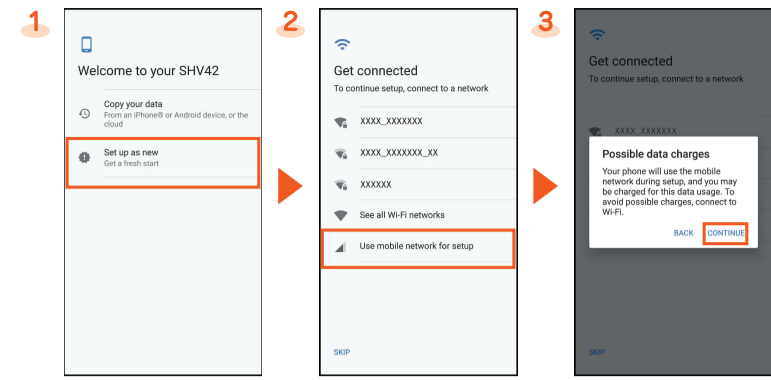
STEP1: Language Setting



[日本語 (日本)]. Select the language. [LET'S GO].

STEP2: Data Transfer/Wi-Fi® Connection Settings

You may skip the steps here for transferring data from another device/making Wi-Fi® Connection settings. By using "Copy your data", you can transfer data from an old device etc.



[Set up as new].* [Use mobile network for setup]. Confirm the contents and [CONTINUE].

- * To transfer data from another device, select "Copy your data" and follow the on-screen instructions.

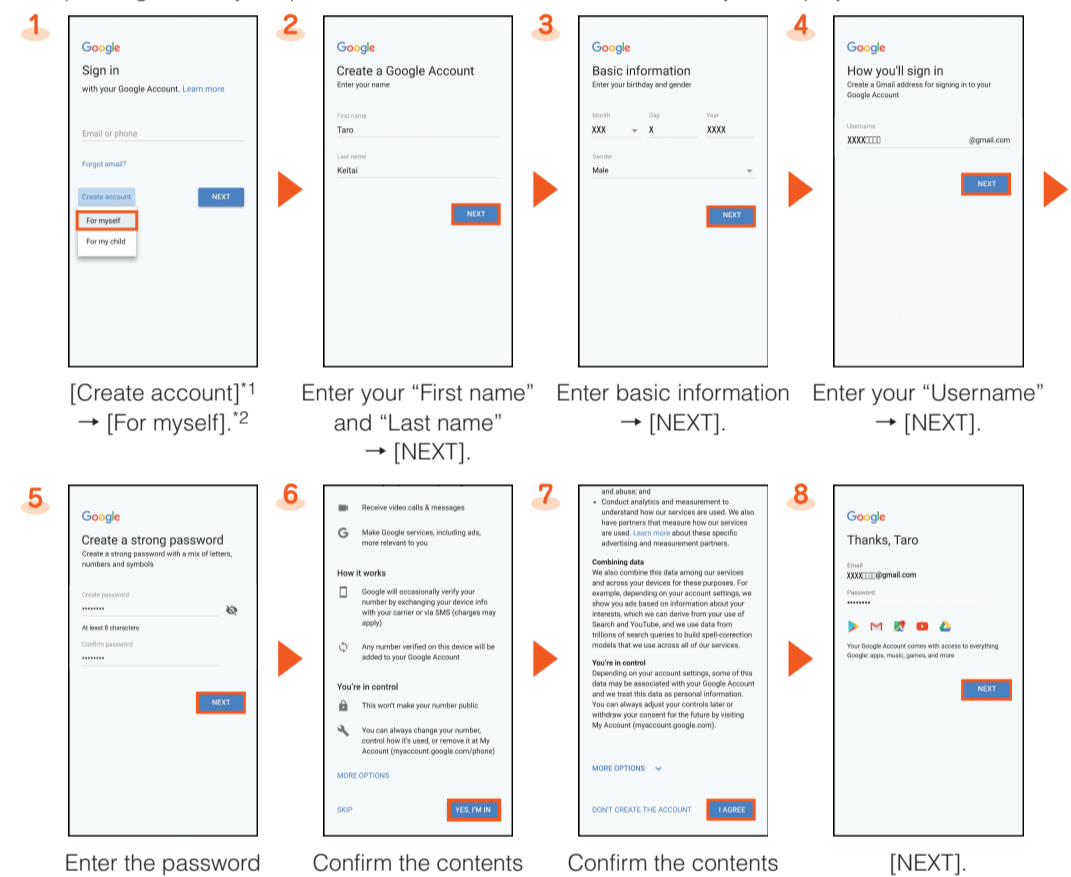
STEP3: Google Account Settings

You can use applications provided by Google Inc. such as "Play Store" and "Calendar" by setting up a Google account. You can use the product without a Google account set, but in such case some applications are not available.

The main setting items are as follows.

| | |
|----------|--|
| Username | Register your Google account (user ID) and any characters which you want to use as a mail address. You can register any user name but you cannot set the same user name as another user's. |
| Password | Register the password for using your Google account. |

- The Google account setup screen is displayed when you also activate an application for which a Google account is required for the first time.
- Depending on how you operate, screens other than those below may be displayed.



- *1 If you already have a Google account, enter the e-mail address.
- *2 To create an account for your child, select [For my child] and follow the on-screen instructions.

STEP4: Google service Settings etc.

Set other items such as Google service, screen unlock.



- *1 To set the fingerprint, select "ADD FINGERPRINT" and follow the on-screen instructions.
- *2 To use each item, select it and follow the on-screen instructions.

STEP5: au初期設定 (au Initial Setting)

You can use various services provided by au such as au Smart Pass and "au Simple Payment Service" in which you can purchase applications displayed on Google Play™ by setting an au ID.

| | |
|----------------|---|
| au ID | Register your au phone number as an au ID. |
| au ID password | Register the password for using your au ID. |
| Security code | The four-digit security code you wrote on the application form. |

1 [GET STARTED].*1

2 [Sign in].

3 Enter the security code → [次へ] (Next).*2

4 Enter the password → [同意して次へ] (Agree).*2

5 [次へ] (Next).

6 [OK].

7 [ALLOW].*3

8 Mark the applications to install → [Next]

9 Confirm the contents and mark the item to set up → [Next].*4

10 [Finish]*5.

*1 When updating apps in the product, mark "Update".

*2 The input screen is displayed only when registering au ID for the first time.

*3 The confirmation screen for app permissions is displayed several times. Operate in the same way.

*4 To use the "Data Storage App" application and automatically store photos to the au server, mark "Backup Setting".

*5 If there are any data stored by "Data Storage App" application, you can restore them from it. Tap "Restore from backup now" and follow the on-screen instructions.

Alternatively, on the home screen → "App list screen" → [Settings] → [au Settings] → [au Settings Menu] → [au Initial Setting].

How to Transfer Data with the au Settings Menu

You can return/store data from an old au phone to this product using a microSD™ memory card or au server. To protect important data, be sure to save (back up) data periodically to a microSD™ memory card or au server.

To return data using an au server, store data from the old au phone to the au server beforehand. To use the au server, you must set an au ID. (If the old au phone does not have au Settings Menu, use au Cloud application).

To return data using a microSD™ memory card, save the data from the old au phone to the microSD™ memory card beforehand. (If the old au phone does not have au Settings Menu, use the au backup application.)

1 On the home screen → "App list screen" → [Settings].

2 [au Settings] → [au Settings Menu].

3 [Data Transfer].*

4 Select "機種変更はこちら" (If you have changed a model) and transfer data by following on-screen guidances.

* If a confirmation screen is displayed for terms of use/privacy policy, follow the on-screen guidances.

Automatically Storing Photos

Use the following steps to set automatic backup of photos to the au server using the "Data Storage App" application. You can automatically store them only with a Wi-Fi® connection.

On the home screen → "App list screen" → [Settings] → [au Settings] → [au Settings Menu] → [Backup Setting] → Select the type of data to store automatically.

au-mail Settings and Changing au-mail Address

au-mail is a service which enables you to exchange e-mails with other cell phones which support e-mails and with PCs. An e-mails address is set automatically in the initial settings. You can change the e-mails address set in the initial settings.

You cannot make the initial settings via Wi-Fi® communication.

Initial Settings

If you have changed a model, an au-mail address from an old au phone is displayed.

1 Home screen → [au-mail].

2 Confirm the contents → [Agree].

3 Check au-mail address → [閉じる] (Close).

Checking the Usage Method of au-mail Address

1 On the home screen → [au-mail].

2 [Menu] → [Operation guide] → Select the usage method to check.

Changing au-mail Address

- On the home screen → [au-mail] → [Menu] → [Change Address/Setting Filter].
- [メールアドレスの変更へ] (To change mail address) → Enter the security code → [送信] (Send).
- Confirm the contents → [承諾する] (Accept).
- Enter an au-mail address → [送信] (Send).
- [OK] → [閉じる] (Close).

Checking au-mail Address

- On the home screen → [au-mail] → [Menu] → [E-mail information]. You can check your au-mail address.

When the confirmation screen is displayed, follow the on-screen instructions. Operations and displayed contents are subject to change without notice.

Brighten the screen/Increase the light duration of the backlight

When the screen is dark/the backlight is quickly turned off, change the setting.

1 On the home screen → "App list screen" → [Settings].

2 [Display].

3 [Brightness level]* → Slide the bar to the left or right and set the brightness.

4 [Sleep] → Select time.

* You can set whether to automatically adjust the screen brightness according to the ambient brightness by switching "Adaptive brightness" to be enabled/disabled.

Wireless LAN (Wi-Fi®) settings

You can connect to an Internet service via a household wireless LAN (Wi-Fi®) environment or a public wireless LAN environment when out and about.

To connect to an Internet via Wi-Fi®, you need to register an access point to connect in advance. For detailed Wi-Fi® settings, refer to the "Online Manual".

1 On the home screen → "App list screen" → [Settings].

2 [Network & Internet].

3 [Wi-Fi].*1

4 Select an access point *2 → Enter the password → [CONNECT].

*1 When [Wi-Fi] is disabled, switch to enable it.

*2 When connecting to a WPS compatible access points, [Wi-Fi preferences] → [Advanced] → [WPS Push Button]/[WPS Pin Entry].