

AQUOS *SERIE* mini

SHV31

Setting Guide

Thank you for buying the “AQUOS SERIE mini SHV31” (simply called the “product” from here on).

This manual describes the settings and precautions for using the product. For detailed descriptions of various functions, refer to the “Instruction Manual application” (Japanese version) that can be used on the product.

- For illustrations and descriptions in this manual, refer to “Basic Manual” available on the au homepage and on the product.
- The company names and product names appearing in this manual are trademarks or registered trademarks of their respective holders.
- Phone illustrations and screen shots are for descriptive purposes only, and may differ from the actual product.

January 2015, 1st Edition

Basic Operations

Describes names of parts and basic operations.

Initial Settings

- STEP1: Language Setting**
Set the language to use on the product.
- STEP2: Wi-Fi® Connection Settings**
You can connect to an Internet service via a household wireless LAN (Wi-Fi®) environment or a public wireless LAN environment when out and about.
- STEP3: Google™ Account Settings**
Set up a Google account for using services such as Google Play™ and Gmail™.
- STEP4: auかんたん設定 (au Easy Setting)**
Set an au ID etc. to use various services provided by au.

E-mail Settings and Changing E-mail Address

Set for using E-mail (@ezweb.ne.jp). An e-mail address is set automatically in the initial settings. You can change the e-mail address set in the initial settings.

Making/Receiving Calls

You can make/receive a call.

Transferring and Backing Up Data

You can transfer/back up your data.

Infrared Communication

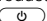
You can send/receive data with devices which support the infrared communication function.

Reducing Battery Consumption

You can switch the setting of “function buttons” to reduce the battery consumption.

Sold by: KDDI CORPORATION, OKINAWA CELLULAR TELEPHONE COMPANY
Manufactured by: SHARP CORPORATION


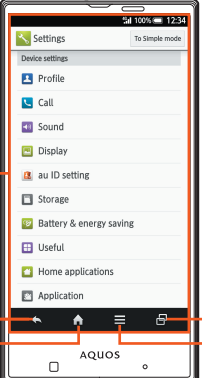
When using the product

- The battery is built into the product, and cannot be removed by the customer.
- To force the power off, hold  down for 8 or more seconds (Release your finger after the product vibrates to turn the power off).

Basic Operations

For detailed operations, refer to the “Instruction Manual application” (Japanese version) that can be used on the product.

- On the home screen, “Apps Sheet” → [Basic Manual].
- When the display language is Japanese, on the home screen, “Apps Sheet” → [取扱説明書] (Instruction Manual). You can switch the display language for function names and other items to English.
- On the home screen, “Apps Sheet” → [設定] (Settings) → [言語と文字入力] (Language & input) → [言語(Language)を選択] (Select language) → [English].



① Display

Touch it directly with your fingers to operate.

Tap/Double tap

Tap: Gently touch the screen and then immediately release your finger.

Double tap: Tap the same position twice.

Slide/Drag

While your finger is gently touching the screen, an item, etc., trace it to the desired direction or position.

Pinch

Touch the screen with two fingers and widen (pinch-out) or narrow (pinch-in) the fingers' distance.

② (Back key): Tap it to return to the previous screen.


③ (Home key): Tap it to display the home screen.


④ (Recent Apps key): Tap it to display Quick Launcher. Long touch it to display the notification/status panel.

⑤ (Menu key): Tap it to display available functions (menus).

⑥ (Power key): Hold it down to turn the power on. Hold it down while the power is turned on → [Power off] → [OK] to turn it off.

Unlock

Unlock by sliding  down.




Long touch

Keep touching an item etc. with your finger.

Flick

Touch the screen and then quickly move (flick) your finger up, down, right or left.

Character Input Method

You can enter characters by flick input or tapping keys repeatedly. Tap “ A I” to switch the input modes.

Flick input

By touching a key, the candidates that can be entered by flick input are displayed as shown on the right. By flicking the key in the direction of a desired character being displayed, the character is entered in the character entry area.



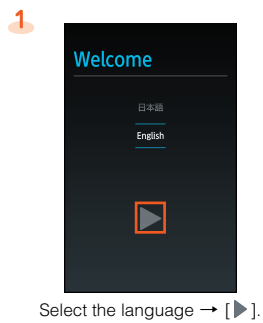
(Character entry screen (12 Key))

Initial Settings

The Google initial settings screen is displayed automatically when you turn the power on for the first time. Follow the on-screen instructions to set each function.

STEP1: Language Setting

- Alternatively, on the home screen, “Apps Sheet” → [Settings] → [Language & input] → [Select language].

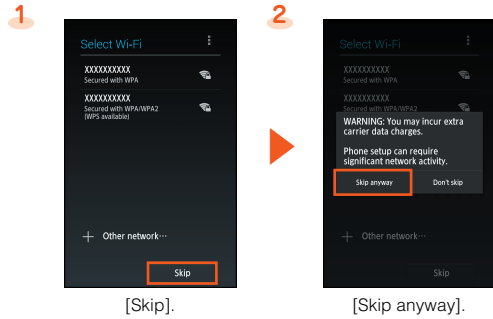


Select the language → [▶].

STEP2: Wi-Fi® Connection Settings

You may skip the steps here for making Wi-Fi® connection settings. For detailed Wi-Fi® settings, refer to the “Instruction Manual application” (Japanese version) that can be used on the product.

- Alternatively, on the home screen, “Apps Sheet” → [Settings] → [Wi-Fi] → Slide “OFF” to the right to “ON”.



[Skip].

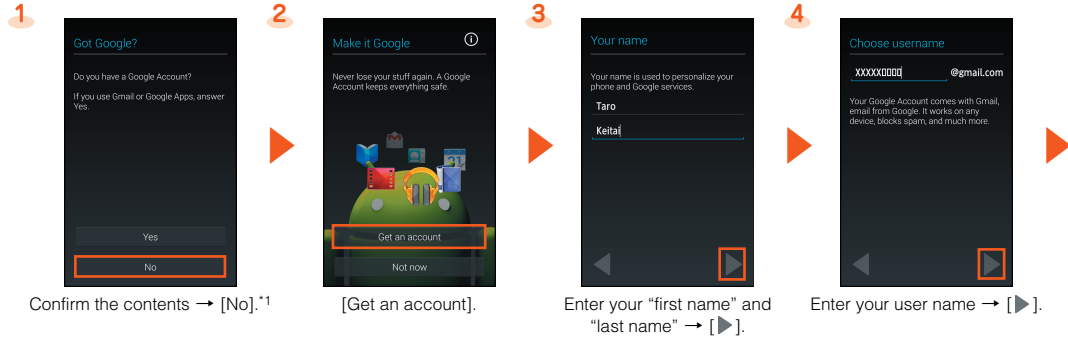
[Skip anyway].

STEP3: Google Account Settings

You can use applications provided by Google Inc. such as “Gmail”, “Play Store” and “Hangouts” by setting up a Google account. You can use the product without a Google account set, but in such case some applications are not available. The main setting items are as follows.

User name	Register your Google account (user ID) and any characters which you want to use as a mail address. You can register any user name but you cannot set the same user name as another user's.
Password	Register the password for using your Google account.

- The Google account setup screen is also displayed when you activate an application for which a Google account is required for the first time.
- Depending on how you operate, screens other than those below may be displayed.



Confirm the contents → [No].¹⁾

[Get an account].

Enter your “first name” and “last name” → [▶].

Enter your user name → [▶].



[I accept].

Enter the authentication text → [▶].

[Not now].³⁾

[SKIP].⁴⁾

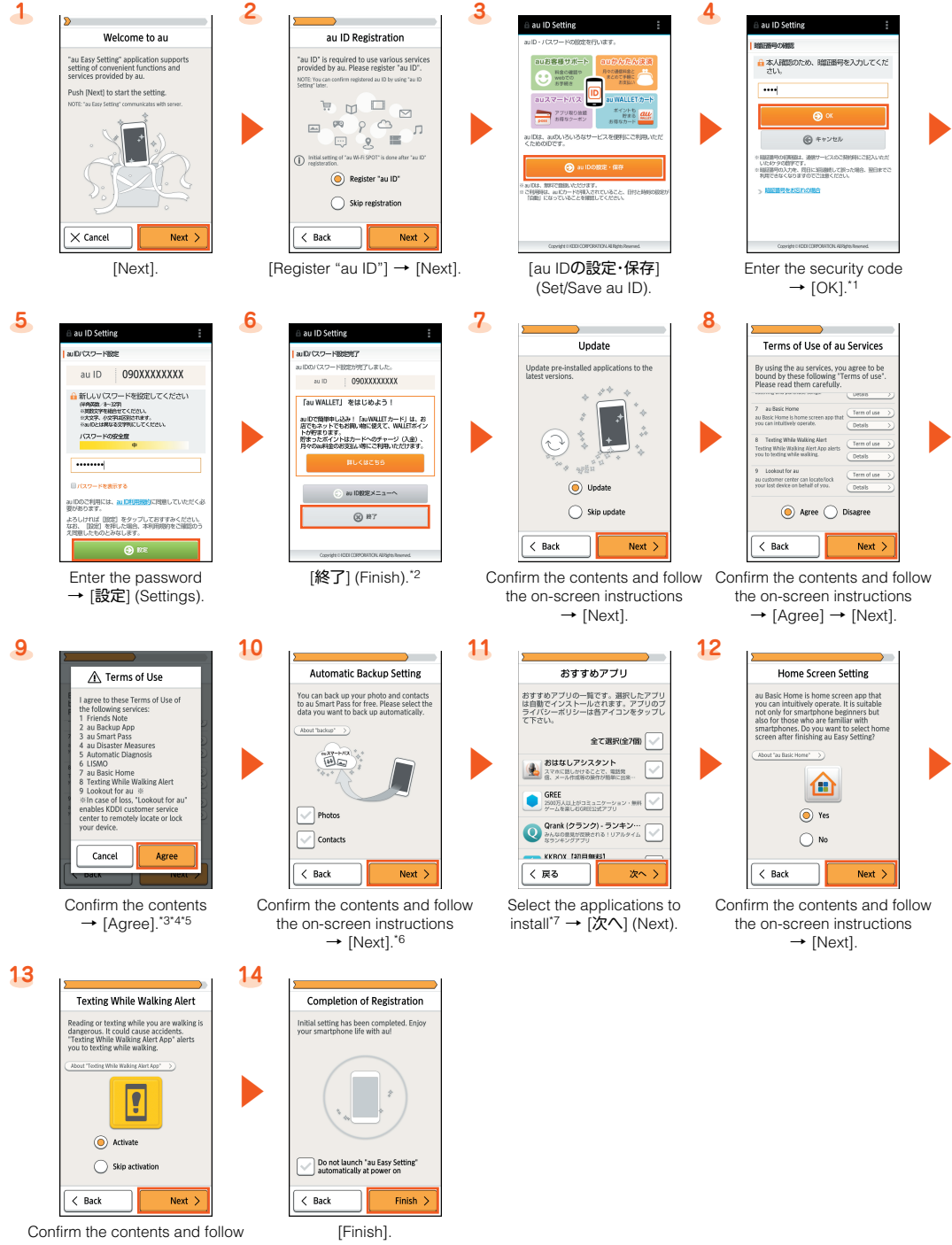
¹⁾ If you already have a Google account, tap “Yes”.
²⁾ If you do not already have another e-mail address, leave blank.
³⁾ Tap “Get started” to join Google+™.
⁴⁾ To specify payment information for use with Google Play, follow the on-screen instructions.

STEP4: auかんたん設定 (au Easy Setting)

You can use various services provided by au such as au Smart Pass and “au Simple Payment Service” in which you can purchase applications displayed on Google Play by setting an au ID.

au ID	Register your au phone number or any other characters as an au ID. The same “au ID” as another user's cannot be registered.
au ID password	Register the password for using your au ID.

- Alternatively, on the home screen, “Apps Sheet” → [au Easy Setting].

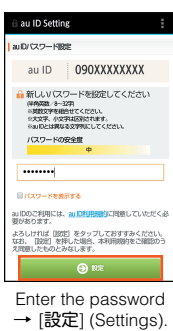


[Next].

[Register “au ID”] → [Next].

[au IDの設定・保存] (Set/Save au ID).

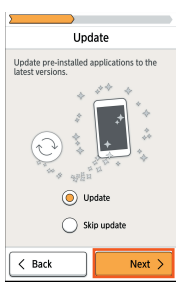
Enter the security code → [OK].¹⁾



Enter the password → [設定] (Settings).



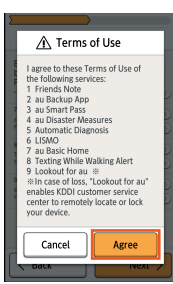
[終了] (Finish).²⁾



Confirm the contents and follow the on-screen instructions → [Next].



Confirm the contents and follow the on-screen instructions → [Agree] → [Next].



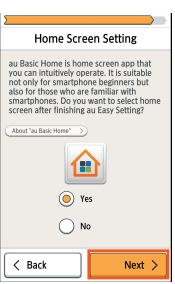
Confirm the contents → [Agree].³⁾⁴⁾⁵⁾



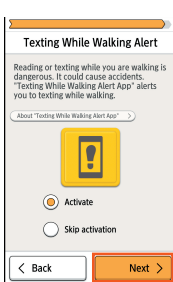
Confirm the contents and follow the on-screen instructions → [Next].⁶⁾



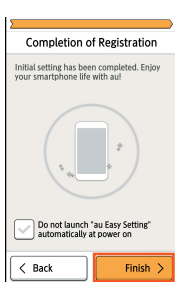
Select the applications to install⁷⁾ → [次へ] (Next).



Confirm the contents and follow the on-screen instructions → [Next].



Confirm the contents and follow the on-screen instructions → [Next].



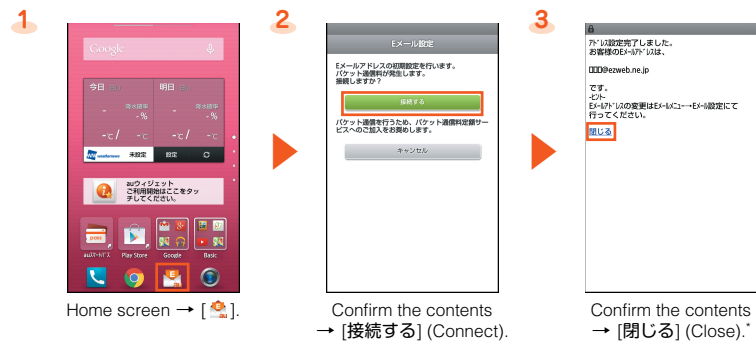
[Finish].

¹⁾ The default value is the four-digit security code you wrote on the application form.
²⁾ au ID registration is complete.
³⁾ When the confirmation screen is displayed, follow the on-screen instructions.
⁴⁾ If a screen for recovery of data appears, follow the on-screen instructions to recover your data.
⁵⁾ Preliminary settings for Lookout for au are finished.
⁶⁾ If a screen for recovery of an application appears, follow the on-screen instructions to recover the application.
⁷⁾ Applications to be displayed and their number may be updated.

E-mail Settings and Changing E-mail Address

E-mail (@ezweb.ne.jp) is a service which enables you to exchange e-mails with other cell phones which support e-mail and with PCs. An e-mail address is set automatically in the initial settings. You can change the e-mail address set in the initial settings.

Initial Settings



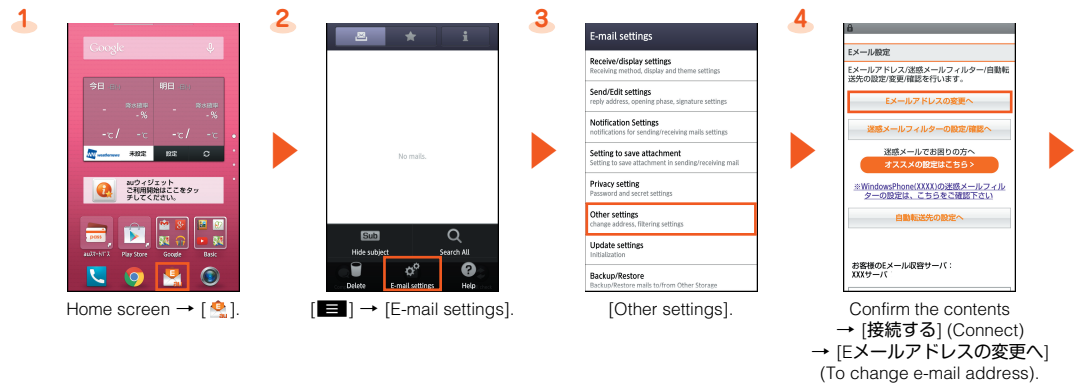
Home screen → [✉].

Confirm the contents → [接続する] (Connect).

Confirm the contents → [閉じる] (Close).^{*}

^{*} When Information for improvement or the information on E-mail update is displayed, confirm the contents and follow the on-screen instructions.

Changing E-mail Address



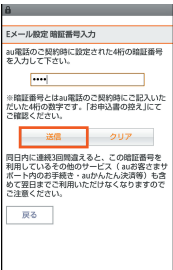
Home screen → [✉].

[≡] → [E-mail settings].

[Other settings].

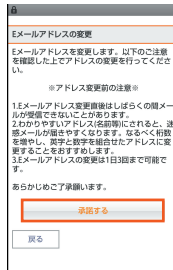
Confirm the contents → [接続する] (Connect) → [Eメールアドレスの変更へ] (To change e-mail address).

1



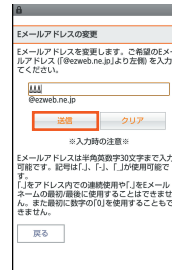
Enter the security code
→ [送信] (Send).

2



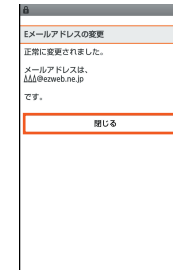
Confirm the contents
→ [承諾する] (Accept).

3



Enter an e-mail address
→ [送信] (Send).

4




[OK] → [閉じる] (Close).

Backing Up E-mail

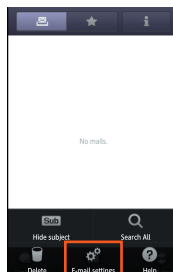
- If a microSD™ memory card is inserted into the product, e-mails are saved on the card. If not, they are saved on the internal memory.

1



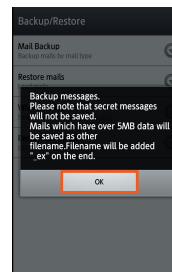
Home screen → [].

2



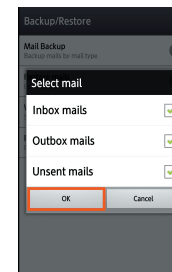
[] → [E-mail settings].

3



[Backup/Restore] → [Mail Backup] → [OK].

4



Select the character code
→ [OK] → Select the type of mail to back up → [OK].

PC-mail settings


- You can use a mail address other than the one used for E-mail (@ezweb.ne.jp). For using PC-mail, PC-mail settings need to be finished by the following operations in advance. For details, refer to the "Instruction Manual application" (Japanese version) that can be used on the product.
- On the home screen, "Apps Sheet" → [PC-mail] → Follow the on-screen instructions.

Making/Receiving Calls

- Screens displayed when you receive a call or during a call may differ depending on "Sync Call settings". For details, refer to the "Instruction Manual application" (Japanese version) that can be used on the product.

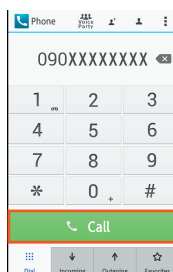
Entering a Phone Number and Making a Call

1



Home screen → [].


2



Enter a phone number → [Call].

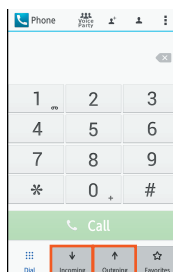
Making a Call Using Incoming History/Outgoing History

1



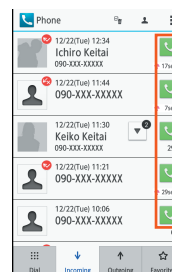
Home screen → [].

2



[Incoming]/[Outgoing].


3



Tap " " of the other party you want to make a call to.

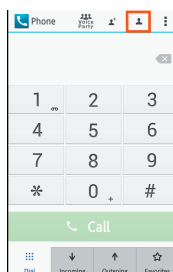
Making a Call Using Address Book

1



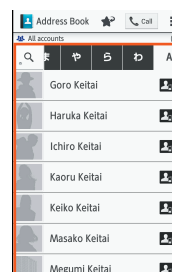
Home screen → [].

2



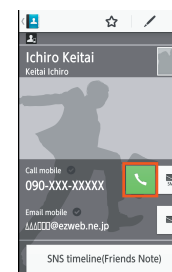
[].

3



Select the other party you want to make a call to.

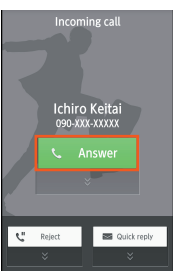
4



[].

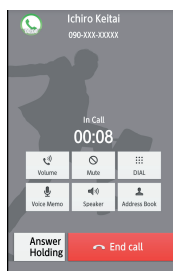
Answering a Call

1



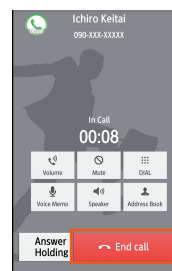
Slide "Answer" down while an incoming call is arriving.

2



The call starts.

3



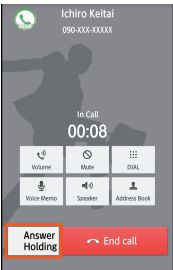
Tap "End call" to end the call.

When you receive an incoming call while the backlight illuminates (except when the Welcome Sheet (Lock Screen) is displayed), the screen shown on the left is displayed. Tap "Accept"/"Speaker" when answering the call. Tap "END" when ending the call.

Putting a Current Call on Hold

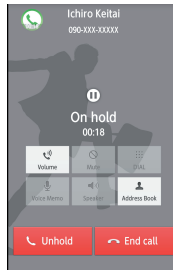
While the call is on hold, a guidance is played for the caller.

1



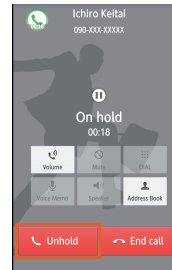
[Answer Holding] during a call.

2



The call is put on hold and the guidance is played for the caller.

3



Tap "Unhold" to unhold the call.

- When you answer an incoming call while the backlight illuminates (except when the Welcome Sheet (Lock Screen) is displayed), operate after tapping "Phone Screen".

Transferring and Backing Up Data

You can transfer data to the product from a previously used au phone using a microSD™ memory card. Also, you can back up data on the product to external memory devices such as a microSD™ memory card and PC.

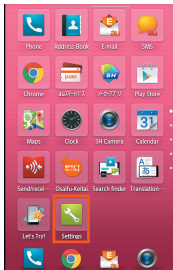
Data which can be transferred/backed up by "Data transfer"	Address book, bookmark, schedule, notepad, user/learning dictionary (iWnn IME - SH edition) and emopa
--	---

- When you transfer or back up data using a microSD™ memory card, insert the microSD™ memory card into the product in advance.
- The data which can be transferred differ depending on the previously used au phone. For details on the data which can be transferred and the method for transferring data to a microSD™ memory card, refer to the instruction manual of the previously used au phone.
- You cannot transfer the copyrighted data saved on a previously used au phone to the product.
- You can download applications again only at the cost of communication charge using the same Google account/au ID as that used to purchase the applications.

Transferring Data


- If a previously used smartphone supports Bluetooth®, you can also import address book data using the Bluetooth® function. For details, refer to the "Instruction Manual application" (Japanese version) that can be used on the product.
- The information and number of screens displayed when data is transferred differ depending on the data.

1



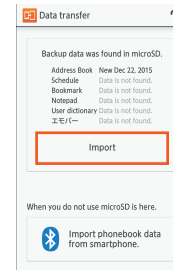
On the home screen, "Apps Sheet" → [Settings].

2



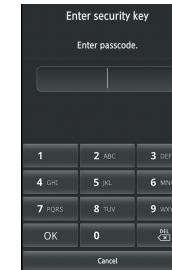
[Backup & reset] → [Data transfer] → [Data import].

3



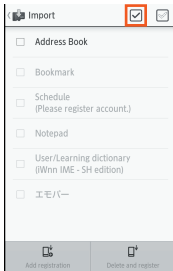
[Import].

4



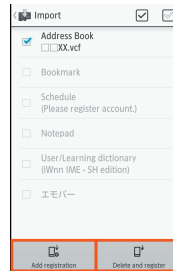
Unlock.*

5



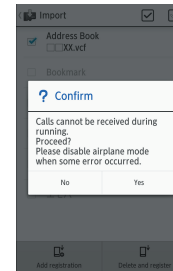
Tap "[]" to restore all contents.

6



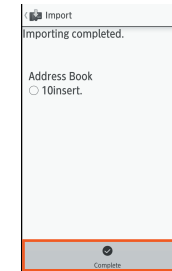
[Add registration]/[Delete and register].

7



When the confirmation screen, the account selection screen, etc. is displayed, follow the on-screen instructions.

8



Tap "Complete" after the restoration ends.

- * The security key is set to "1234" by default.

Backing Up Data

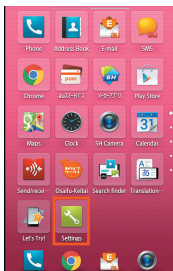
To protect important data such as address book entries, back up the data to external memory devices such as a microSD™ memory card and PC periodically.

- Move/Copy data saved on the main unit to the microSD™ memory card or PC using Contents Manager, USB connection, etc. For details, refer to the "Instruction Manual application" (Japanese version) that can be used on the product.

When the product is kept at an au shop or another shop for repairs, the memory will be deleted. Back up data in advance.


- The information and number of screens displayed when data is backed up differ depending on the data.

1



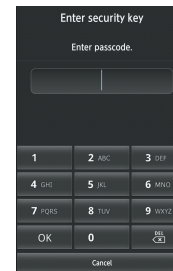
On the home screen, "Apps Sheet" → [Settings].

2



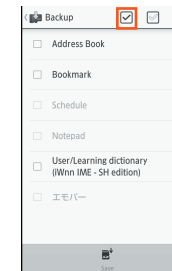
[Backup & reset] → [Data transfer] → [Save data to microSD].

3



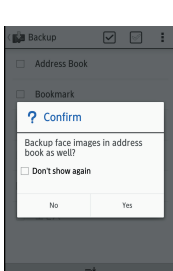
Unlock.*

4



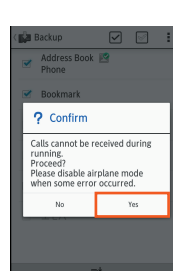
Tap "[]" to back up all contents.

5



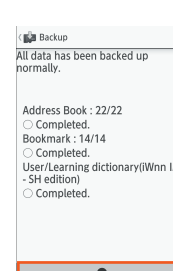
When the confirmation screen, the account selection screen, etc. is displayed, follow the on-screen instructions.

6



[Save] → [Yes].

7



Tap "Complete" after the backup ends.

- * The security key is set to "1234" by default.

Viewing/Playing data

You can view/play data on the product by the following operations.

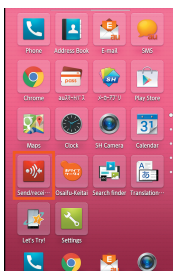
- On the home screen, "Apps Sheet" → [Contents Manager] → Tap the data to display.

Infrared Communication

Sending Data

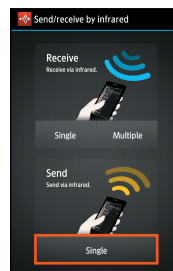
- The information and number of screens displayed when data is sent differ depending on the data.

1



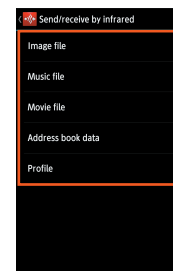
On the home screen, "Apps Sheet" → [Send/receive by infrared].

2



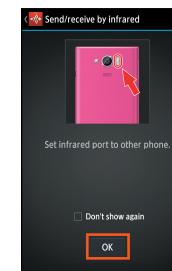
[Single].

3



Select data to send.*

4



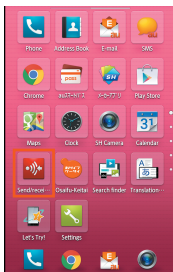
Follow the on-screen instructions → [OK].

- * When sending a profile, you can set items to send in "Send Setting".

Receiving Data

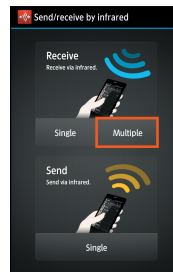
- Set the other party's device ready for sending data via infrared communication in advance. For details, refer to the instruction manual of the other party's device which will send data.
- The information and number of screens displayed when data is received differ depending on the data.

1



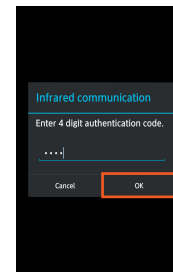
On the home screen, "Apps Sheet" → [Send/receive by infrared].

2



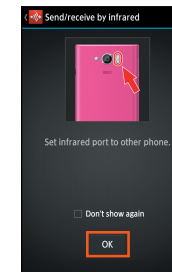
[Multiple].

3



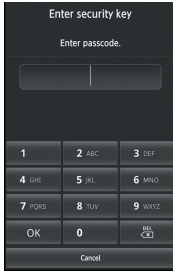
Enter the authentication code → [OK].¹

4



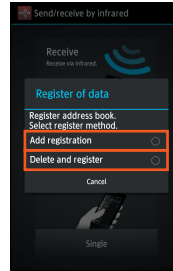
Follow the on-screen instructions → [OK].

5



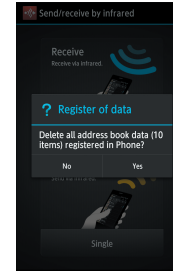
Unlock.²

6



[Add registration]/[Delete and register].³

7



When the confirmation screen, the account selection screen, etc. is displayed, follow the on-screen instructions.


- ¹ Authentication code is four-digit number prepared along with the other party before sending/receiving data.
- ² The security key is set to "1234" by default.
- ³ If you perform "Delete and register", the original data will be deleted.

Reducing Battery Consumption

You can access "function buttons" from the notification/status panel to enable/disable functions and modify their settings. You can reduce the battery consumption by switching their setting frequently, such as when not using the functions. Enabled functions are displayed in blue.

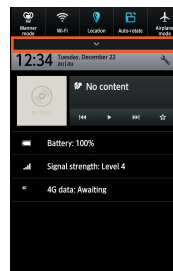
- You can also reduce the battery consumption using "Energy saving settings". For details, refer to the "Instruction Manual application" (Japanese version) that can be used on the product.

1



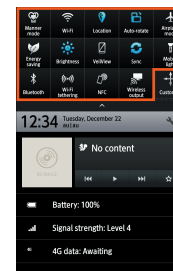
Slide the status bar down.

2



[].

3



Tap the functions whose setting you want to switch by using "function buttons".