

### Basic Operations

Describes names of parts and basic operations.

#### Initial Settings

- STEP1: Using Google Location Service  
Set for using Google's location service.
- STEP2: Profile Settings  
Set information such as your phone number and mail address.
- STEP3: Google Account Settings  
Set up a Google account for using services such as Google Play and Gmail.
- STEP4: **auかんたん設定** (au Easy Setting)  
Set an au ID etc. to use various services provided by au.

#### E-mail Settings and Changing E-mail Address

Set for using E-mail (@ezweb.ne.jp). An e-mail address is set automatically in the initial settings. You can change the e-mail address set in the initial settings.

#### Transferring and Backing Up Data

You can transfer/back up your data.

#### Transferring Address Books Using Friends Note (au Addressbook)

You can transfer address books from a previously used au cell phone using Friends Note and au Addressbook.

#### Reducing Battery Consumption

You can switch the setting of "function buttons" to reduce the battery consumption.

# AQUOS PAD

## SHT22

### Setting Guide

Thank you for buying the "AQUOS PAD SHT22" (simply called the "product" from here on).

This manual describes the settings and precautions for using the product. For detailed descriptions of various functions, refer to the "Instruction Manual application" (Japanese version) that can be used on the product.

\* For illustrations and descriptions in this manual, refer to "Basic Manual" available on the au homepage and on the product.

\* The company names and product names appearing in this manual are trademarks or registered trademarks of their respective holders.

February 2014, 1st Edition

Sold by: KDDI CORPORATION, OKINAWA CELLULAR TELEPHONE COMPANY  
Manufactured by: SHARP CORPORATION

#### When using the product

- The battery is built into the product, and cannot be removed by the customer.
- To force the power off, hold down for 8 or more seconds (Release your finger after the product vibrates to turn the power off).

### Basic Operations

For detailed operations, refer to the "Instruction Manual application" (Japanese version) that can be used on the product.

- When the display language is Japanese, on the home screen, tap [アプリ] (APPS) → [取扱説明書] (Instruction Manual).
- You can switch the display language for function names and other items to English.
- On the home screen, tap [アプリ] (APPS) → [設定] (Settings) → [言語と文字入力] (Language & input) → [言語(Language)を選択] (Select language) → [English].



① (Power key): Hold it down to turn the power on. Hold it down while the power is turned on → [Power off] → [OK] to turn it off.

② Status bar

Notification icons to notify you of a new mail message, a running operation, etc. and status icons to show the status of the product are displayed.

③ Display

Touch it directly with your fingers to operate.

#### Tap/Double tap

Tap: Gently touch the screen and then immediately release your finger.  
Double tap: Tap the same position twice.



#### Long touch

Keep touching an item etc. with your finger.



#### Slide/Drag

While your finger is gently touching the screen, an item, etc., trace it to the desired direction or position.



#### Flick

Touch the screen and then quickly move (flick) your finger up, down, right or left.



#### Pinch

Touch the screen with two fingers and widen (pinch-out) or narrow (pinch-in) the fingers' distance.



④ (Back key): Tap it to return to the previous screen.

⑤ (Home key): Tap it to display the home screen.

⑥ (Menu key): Tap it to display available functions (menus).

⑦ (KAKU key): Tap it to use KAKU Notepad.

⑧ (Recent Apps key): Tap it to display Quick Launcher. Long touch it to display the notification/status panel.

#### Unlock

Unlock by sliding down.



### Character Input Method

You can switch input methods for character entry.

While the keyboard is displayed, open the notification panel → [Choose input method] → [English (US)]/[Japanese].

- Following operation explanations use "Japanese - iWnn IME - SH edition".

You can enter characters by tapping keys. Tap "あ" to switch the input modes.

### Initial Settings

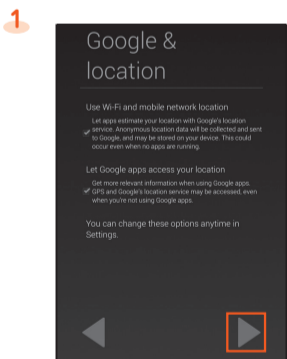
The Google location service screen and initial settings screen are displayed automatically when you switch the display language to English and turn the power of the product off and on after turning it on for the first time. Follow the on-screen instructions to set each function.

#### STEP1: Using Google Location Service

Use Wi-Fi and mobile network location <sup>*1</sup>	Set whether to obtain location information by using Wi-Fi® or mobile network.
Let Google apps access your location <sup>*2</sup>	Set whether to use GPS-obtained location information with Google applications.

<sup>\*1</sup> Alternatively, on the home screen, tap [APPS] → [Settings] → [Location services] and slide [OFF]/[ON] in [Access to my location] to the right/left to set up ("Wi-Fi & mobile network location" is enabled/disabled).

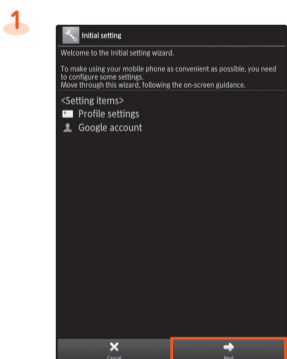
<sup>\*2</sup> Alternatively, set by the following operation. On the home screen, tap [APPS] → [Google Settings] → [Location] and follow the on-screen instructions.



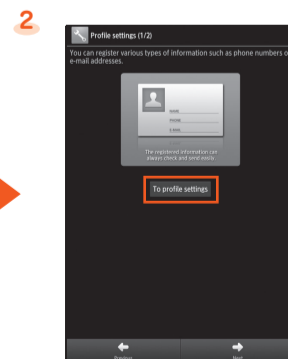
Confirm the contents → [▶].

#### STEP2: Profile Settings

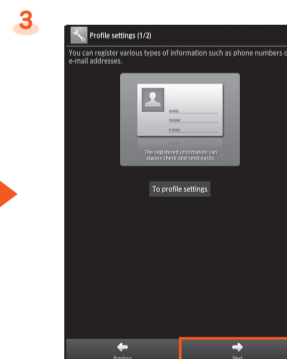
- Alternatively, on the home screen, tap [APPS] → [Settings] → [Initial setting] to display the initial settings screen.



[Next].



[To profile settings].



Register each item → [Save] → [Yes] → [Next].

#### STEP3: Google Account Settings

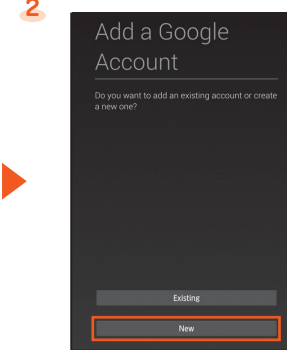
You can use applications provided by Google Inc. such as "Gmail", "Play Store" and "Hangouts" by setting up a Google account. You can use the product without a Google account set, but in such case some applications are not available. The main setting items are as follows (For "Recovery email address", leave it blank when you do not have another mail address).

User name	Register your Google account (user ID) and any characters which you want to use as a mail address. You can register any user name but you cannot set the same user name as another user's.
Password	Register the password for using your Google account.

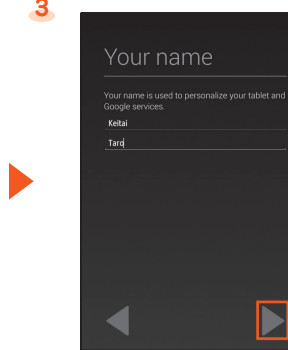
- The Google account setup screen is also displayed when you activate an application for which a Google account is required for the first time.
- Depending on how you operate, screens other than those below may be displayed.



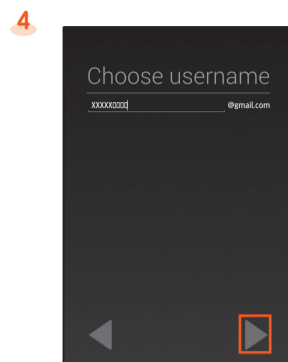
[To Google account].



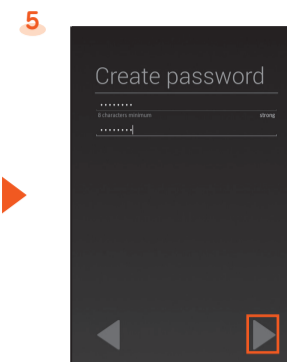
[New].<sup>\*1</sup>



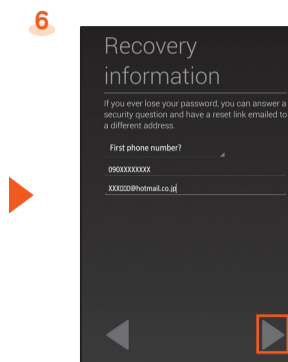
Enter your "first name" and "last name" → [▶].



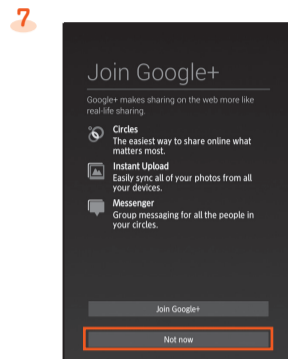
Enter your user name → [▶].



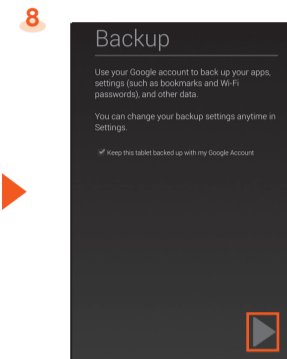
Enter the password → [▶].



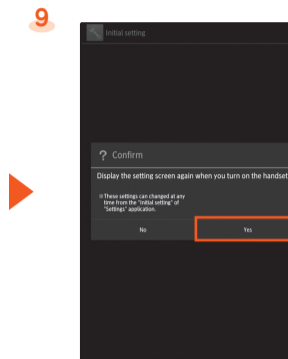
Enter the question and answer for protecting security and the recovery email address → [▶].



[Not now].<sup>\*2</sup>



Confirm the contents → [▶] → [▶].



[Done] → [Yes]/[No].

<sup>\*1</sup> If you already have a Google account, tap [Existing].

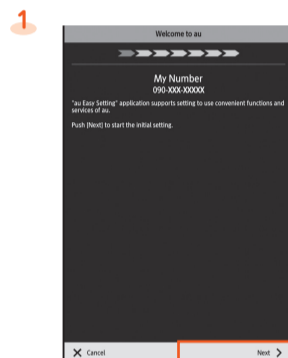
<sup>\*2</sup> Tap [Join Google+] to join Google+.

#### STEP4: auかんたん設定 (au Easy Setting)

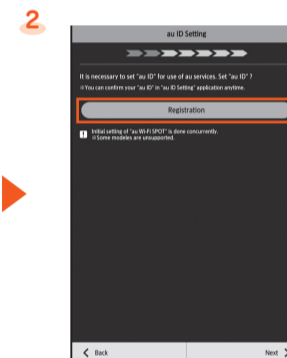
You can use various services provided by au such as au Smart Pass and "au Simple Payment Service" in which you can purchase applications displayed on Google Play by setting an au ID.

au ID	Register your au phone number or any other characters as an au ID. The same "au ID" as another user's cannot be registered.
au ID password	Register the password for using your au ID.

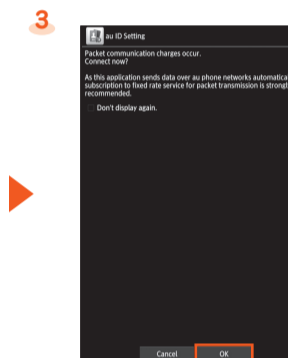
- Alternatively, on the home screen, tap [APPS] → [au Easy Setting] to set up.



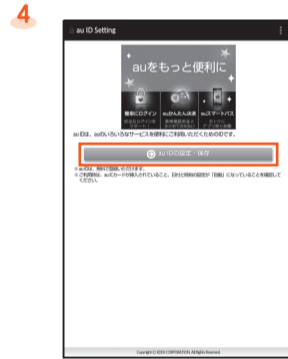
[Next].



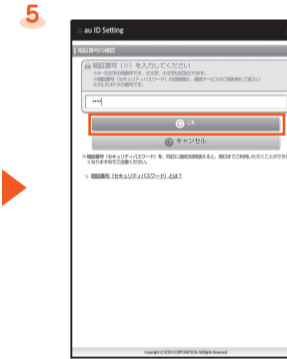
[Registration].



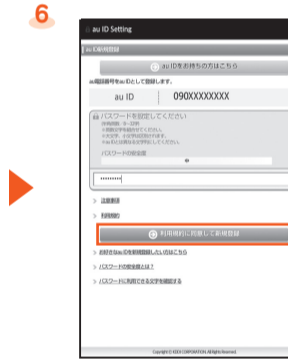
Confirm the contents → [OK].



[au IDの設定・保存] (Set/Save au ID).



Enter the security code → [OK].<sup>\*1</sup>



Enter the password → [利用規約に同意して新規登録] (Agree with the terms of service and register newly).<sup>\*2</sup>



[設定画面へ] (Go to the setting screen).<sup>\*3</sup>



Enter your date of birth, the secret question and its answer → [入力完了] (Finish entering) → [設定] (Set).



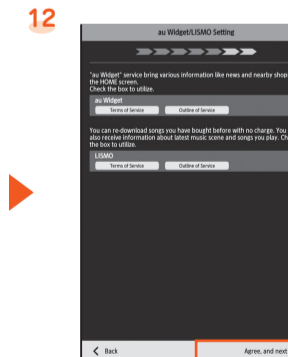
[終了] (End).



[Next].



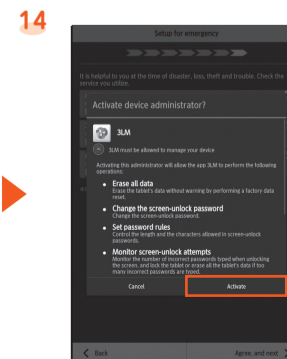
Confirm the contents and follow the on-screen instructions → [Agree, and next]/[Next].



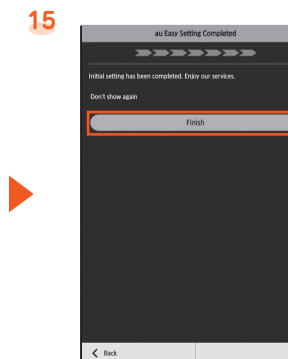
Confirm the contents and follow the on-screen instructions → [Agree, and next]/[Next].



Confirm the contents and follow the on-screen instructions → [Agree, and next]/[Next].



Confirm the contents → [Activate].<sup>\*5</sup>



[Finish].

<sup>\*1</sup> The default value is the four-digit security code you wrote on the application form.

<sup>\*2</sup> Tap "お好きなau IDを新規登録したい方はこちら" (For registering a new au ID) to register a new au ID with other than au phone numbers. Tap "au IDをお持ちの方はこちら" (For using the au ID you already have) to set the au ID you already had.

<sup>\*3</sup> au ID registration is complete. Next, set the information for reissuing the password.

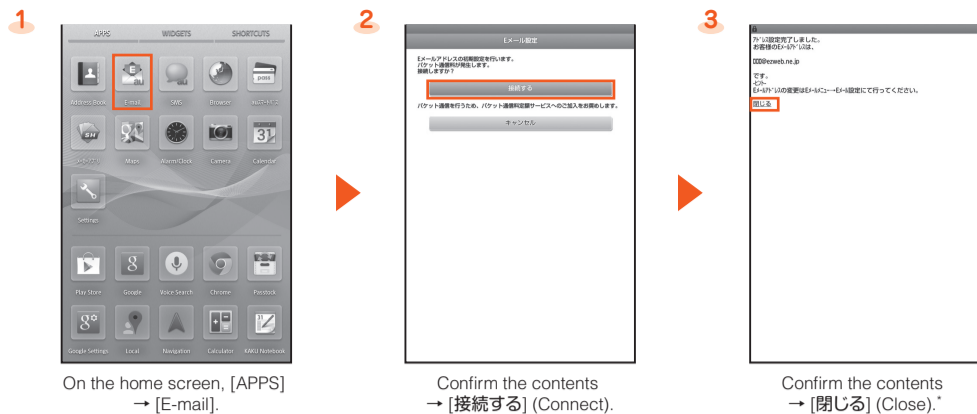
<sup>\*4</sup> When the confirmation screen is displayed, follow the on-screen instructions.

<sup>\*5</sup> This screen is displayed when "3LM(Loss or Theft Measures ※)" is enabled.

## E-mail Settings and Changing E-mail Address

E-mail (@ezweb.ne.jp) is a service which enables you to exchange e-mails with other cell phones which support e-mail and with PCs. An e-mail address is set automatically in the initial settings. You can change the e-mail address set in the initial settings.

### Initial Settings



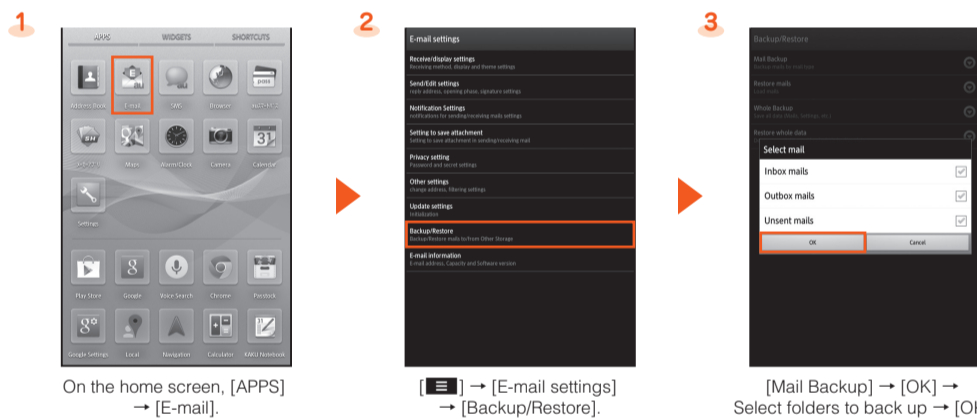
\* When the information on E-mail update is displayed, confirm the contents and follow the on-screen instructions.

### Changing E-mail Address



### Backing Up E-mail

● If a microSD™ memory card is inserted into the product, e-mails are saved on the card. If not, they are saved on the internal memory.



**PC-mail settings**  
You can use a mail address other than the one used for E-mail (@ezweb.ne.jp). For using PC-mail, PC-mail settings need to be finished by the following operations in advance. For details, refer to the "Instruction Manual application" (Japanese version) that can be used on the product.  
● On the home screen, tap [APPS] -> [PC-mail] -> Follow the on-screen instructions.

## Transferring and Backing Up Data

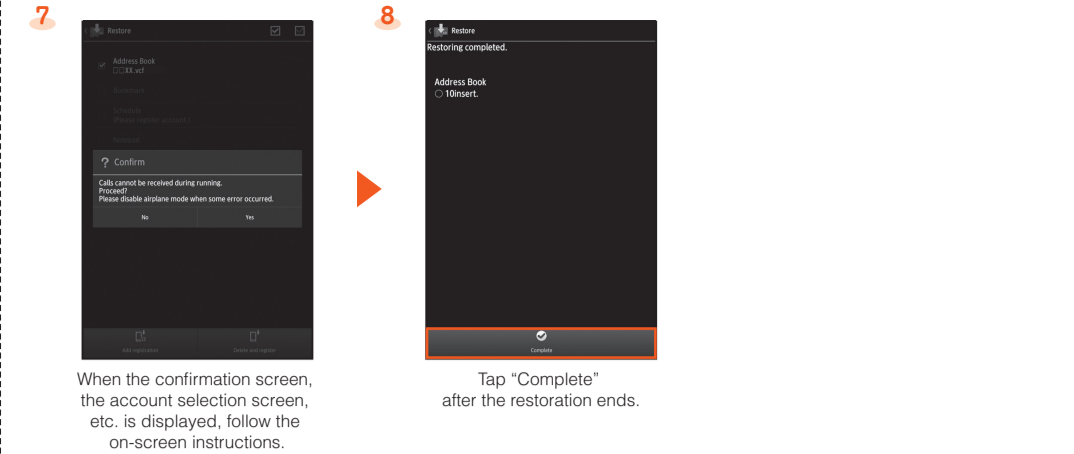
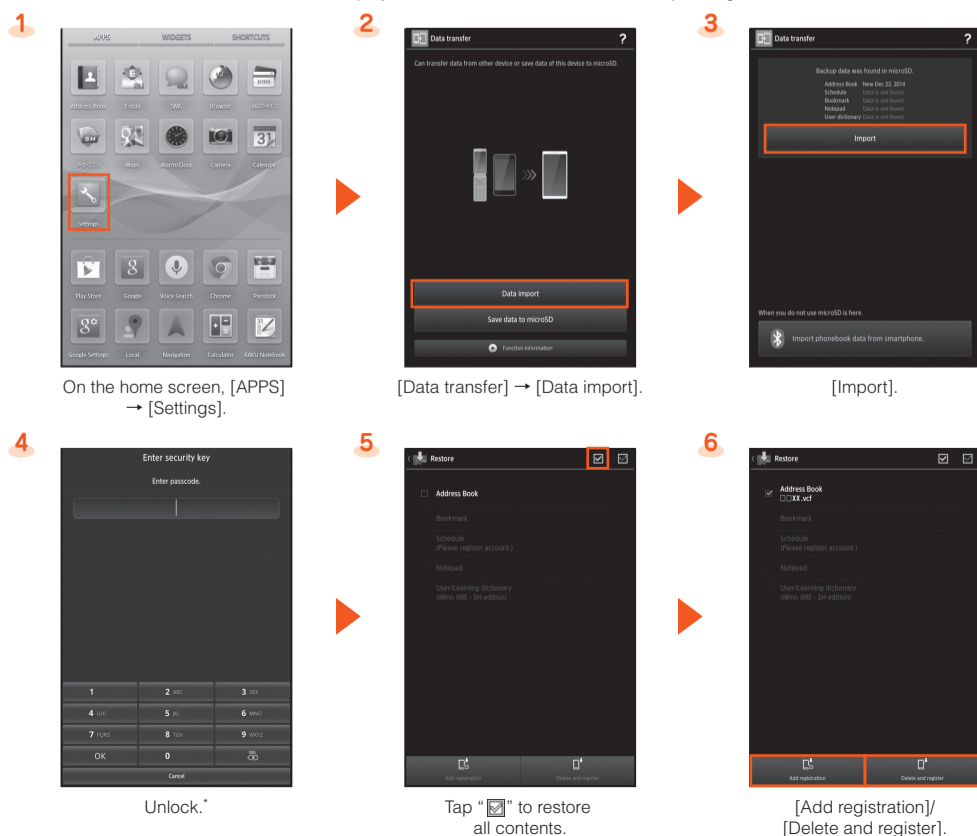
You can transfer data to the product from a previously used au phone using a microSD™ memory card. Also, you can back up data on the product to external memory devices such as a microSD™ memory card and PC.

Data which can be transferred/backed up by "Data transfer"	Address book, bookmark (favorites in the browser), schedule, notepad and user/learning dictionary (iWnn IME - SH edition)
--	---

- When you transfer or back up data using a microSD™ memory card, insert the microSD™ memory card into the product in advance.
- The data which can be transferred differ depending on the previously used au phone. For details on the data which can be transferred and the method for transferring data to a microSD™ memory card, refer to the instruction manual of the previously used au phone.
- You cannot transfer the copyrighted data saved on a previously used au phone to the product. However, if you change your phone model from a LISMO compatible model, you can transfer Chaku-uta full®, Chaku-uta full plus® and video clips downloaded on the au phone.
- You can download applications again only at the cost of communication charge using the same Google account/au ID as that used to purchase the applications.

### Transferring Data

- If a previously used smartphone supports Bluetooth®, you can also import address book data using the Bluetooth® function. For details, refer to the "Instruction Manual application" (Japanese version) that can be used on the product.
- The information and number of screens displayed when data is transferred differ depending on the data.



\* The security key is set to "1234" by default.

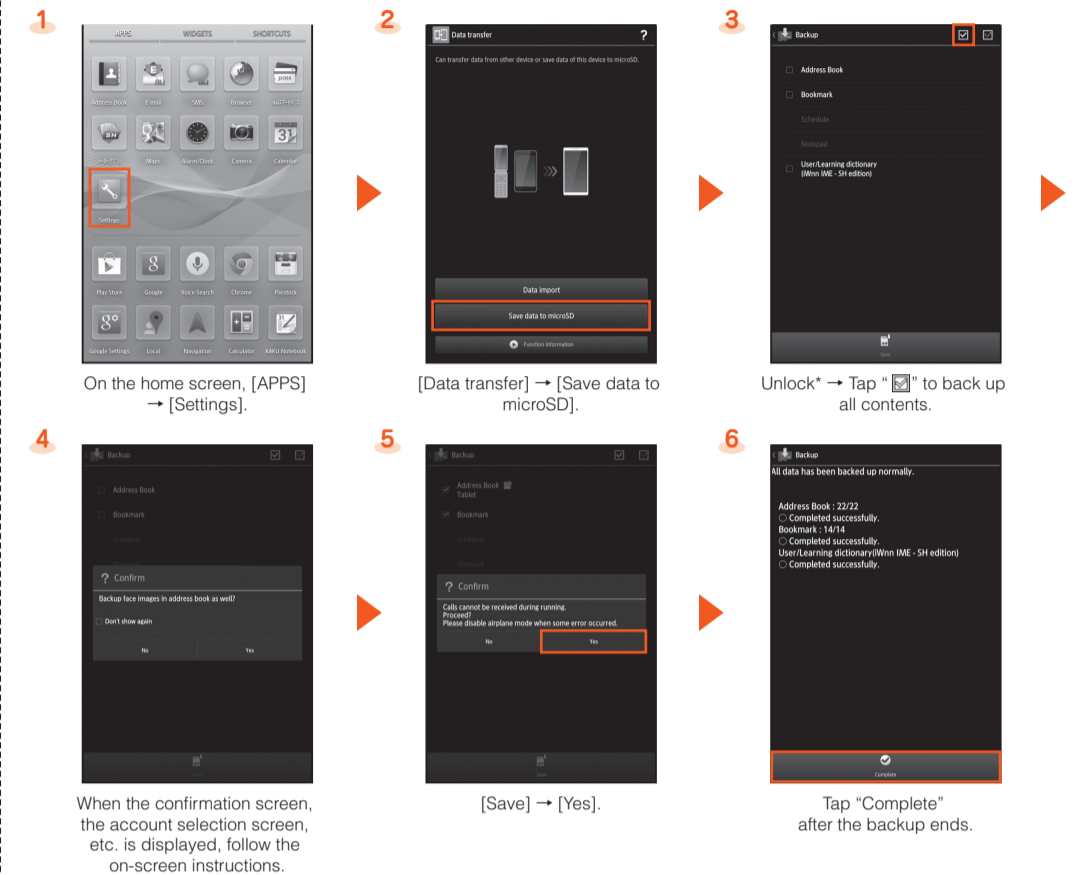
### Backing Up Data

To protect important data such as address book entries, back up the data to external memory devices such as a microSD™ memory card and PC periodically.

- Move/Copy data saved on the main unit to the microSD™ memory card or PC using Contents Manager, USB connection, etc. For details, refer to the "Instruction Manual application" (Japanese version) that can be used on the product.

When the product is kept at an au shop or another shop for repairs, the memory will be deleted. Back up data in advance.

- The information and number of screens displayed when data is backed up differ depending on the data.



\* The security key is set to "1234" by default.

### Viewing/Playing data

You can view/play data on the product by the following operations.

- On the home screen, tap [APPS] -> [Contents Manager] -> Tap data to display.

## Transferring Address Books Using Friends Note (au Addressbook)

If you save the address book of the previously used au cell phone (au cell phones other than smartphones) on au Addressbook, you can transfer the address book to the product using Friends Note.

- To use this function, set "Keitai and PC Linkage Settings" on the previously used au cell phone and save the address book on au Addressbook in advance. For detailed operations, refer to the instruction manual of the au cell phone or au homepage.
- This function is available only for the transference between an au cell phone which has a different phone number and the product. If you change models from another au terminal to the product or have smartphones and the product, use a microSD™ memory card to transfer the address book data.
- Set an au ID in advance.



\*1 For details on "Keitai and PC Linkage Settings", refer to the au homepage.  
\*2 The first time "Friends Note" is activated, an introductory screen and permissions/terms of use are displayed. Confirm the contents and follow the on-screen instructions.  
\*3 If "Setting of backup" was enabled in initial settings, the screen in 4 is displayed.  
\*4 If a notification to update software is displayed, tap "OK".  
\*5 This is not displayed if contacts are registered on the "Address Book" application.  
\*6 Tap "YES" to activate the browser and display the "Friends Note" screen.  
\*7 To register an SNS account, tap "Now".

## Reducing Battery Consumption

You can access "function buttons" from the notification/status panel to enable/disable functions and modify their settings. You can reduce the battery consumption by switching their setting frequently, such as when not using the functions. Enabled functions are displayed in blue.

- You can also reduce the battery consumption using "Energy saving settings". For details, refer to the "Instruction Manual application" (Japanese version) that can be used on the product.

