

Thank you for buying the "AQUOS PAD SHT21" (simply called the "product" from here on). This manual describes the settings and precautions for using the product. For descriptions on various functions, refer to the "Instruction Manual application" (Japanese).

When Using the Product

Describes precautions for using the product.
Basic Operations
 Describes names of parts and basic operations.

Initial Settings

STEP1: Profile Settings

Set information such as your phone number and mail address.

STEP2: Google Account Settings

You will be able to download applications from Google Play. You can also use services such as Gmail, YouTube, Google Maps and Google Calendar.

STEP3: au ID Settings

Set an au ID to use various services provided by au. You can also make initial settings for au Wi-Fi SPOT.

STEP4: Backup Settings

You will be able to back up address books or photos to au Cloud.

STEP5: au widget Settings

E-mail Setting and Changing E-mail Address

Set for using E-mail (@ezweb.ne.jp). An e-mail address is set automatically in the initial settings. You can change the e-mail address set in the initial settings.

Transferring, Viewing and Backing Up Data Using a microSD™ Memory Card
 You can transfer your data from a previously used au terminal using a microSD™ memory card. Also, you can view/play the transferred data or back up the data to a microSD™ memory card.

Transferring Address Books Using Friends Note (au Addressbook)

You can transfer address books from a previously used au cell phone using Friends Note and au Addressbook.

Reducing Battery Consumption

You can switch settings in "settings list" to reduce the battery consumption.

* All company names and product names in this manual are trademarks or registered trademarks of the respective companies.

Sold by: KDDI CORPORATION,
 OKINAWA CELLULAR TELEPHONE COMPANY
 Manufactured by: SHARP CORPORATION

November 2012, 1st Edition

When Using the Product

For using the product, be sure to observe the following items. For details, refer to the "Instruction Manual application" (Japanese).

- When you purchase the product, the internal battery is not fully charged. Be sure to charge the internal battery before use.
- To maintain the waterproof and dustproof properties, close the external connection jack cover and microSD memory card/au Micro IC Card (LTE) cover securely.
- Since the battery is built in the product, it cannot be removed.
- To turn the power off forcibly, hold [Power] and [Home] down simultaneously for at least 12 seconds.

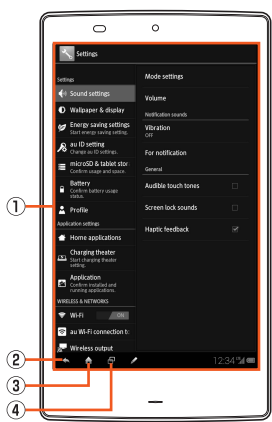
Basic Operations

You can switch the display language for function names and other items to English.

- On the home screen, tap [アプリ] (APPS) → [設定] (Settings) → [言語と文字入力] (Language & input) → [言語(Language)を選択] (Select language) → [English].

For detailed operations, refer to the "Instruction Manual application" (Japanese).

- On the home screen, tap [APPS] → [Instruction Manual].



Display

Touch it directly with your fingers or the stylus pen to operate.

Tap

Gently touch the screen and then immediately release your finger.

- ② Tap it to return to the previous screen.

- ③ Tap it to display the home screen.

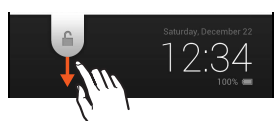
- ④ Tap it to display the history of activated applications.

- ⑤ Power key

Hold it down to turn the power on.

Unlock

Unlock by moving [Slide].



Character Input Method

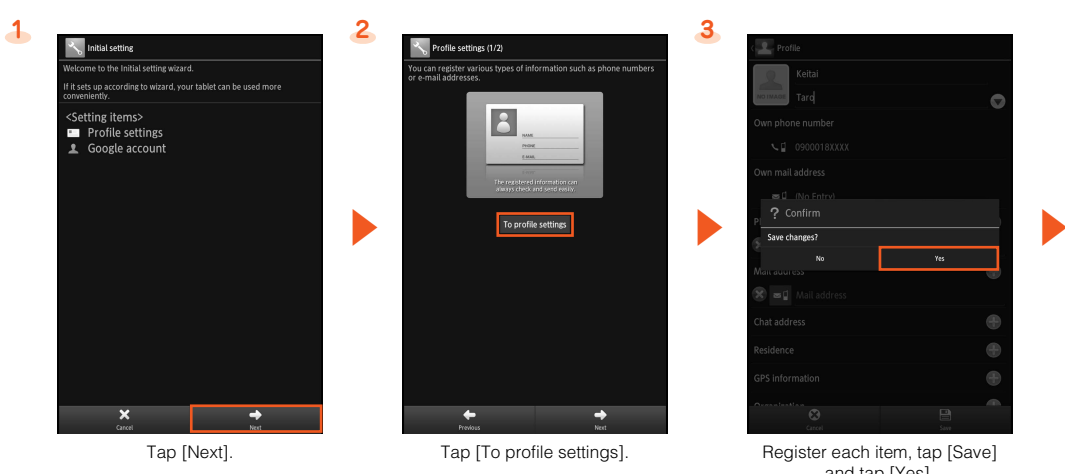
You can enter characters by tapping keys. Tap [Mode] to switch the input modes.

Initial Settings

After you purchase the product, the initial settings screen is displayed automatically when you turn the power of the product on for the first time. Follow the on-screen instructions to set each function.

- Alternatively, on the home screen, tap [APPS] → [Settings] → [Initial setting] to set up.

STEP1: Profile Settings

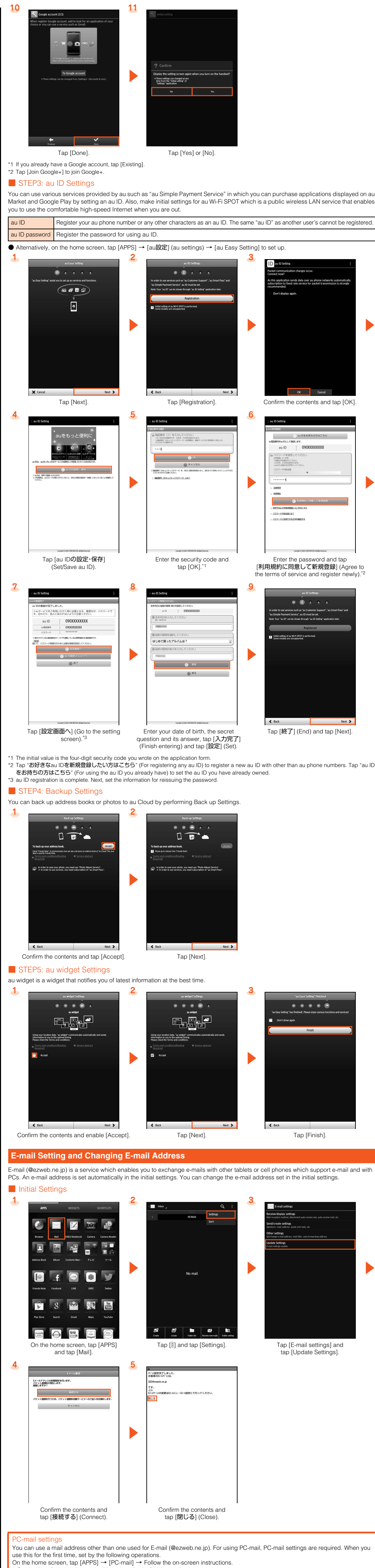
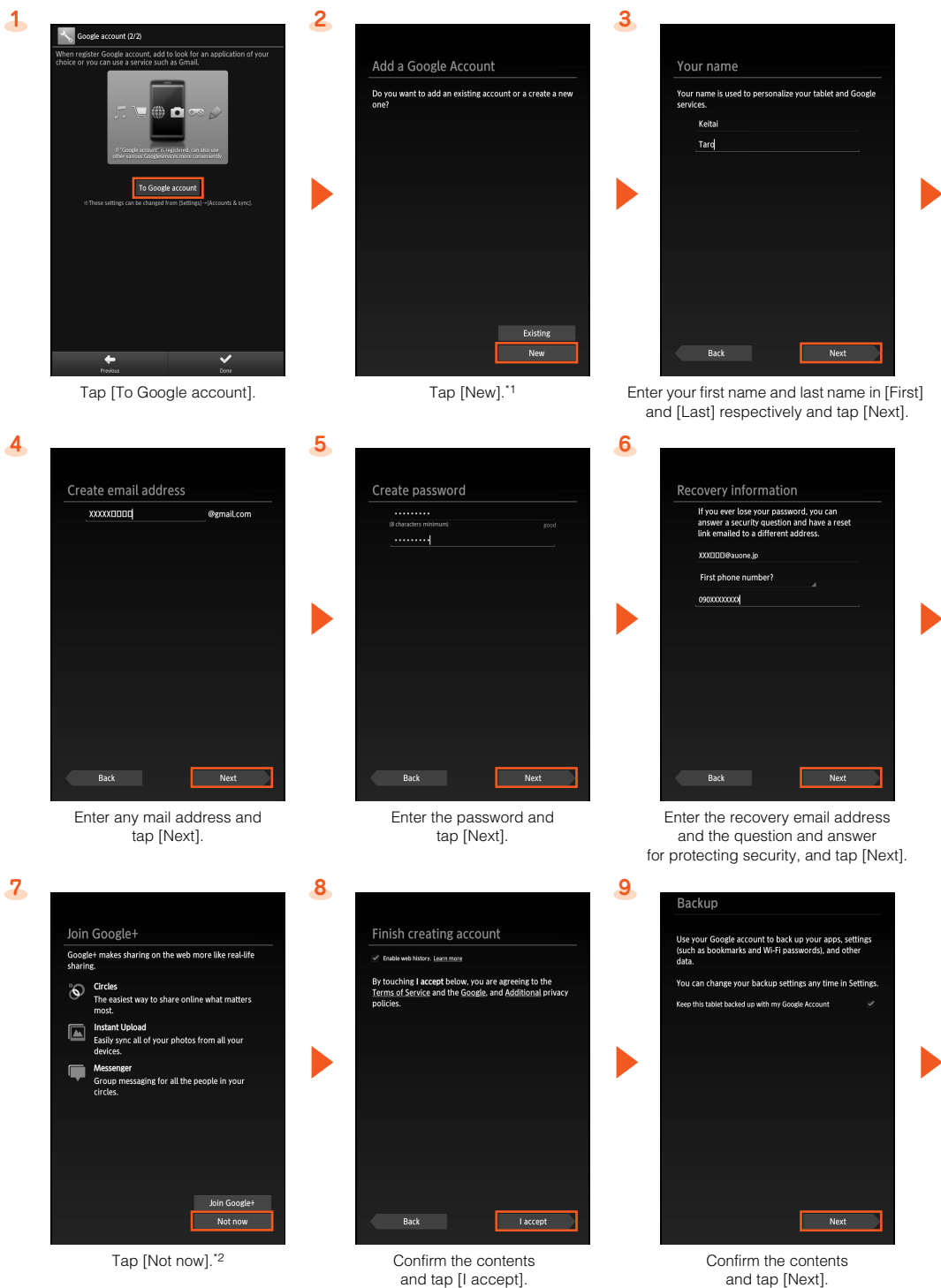


STEP2: Google Account Settings

You can use applications provided by Google Inc. such as "Gmail", "Play Store" and "Talk" by setting up a Google account. You can use the product without a Google account set, but in such case some applications are not available. The main setting items are as follows (For "Recovery email address", leave it blank when you do not have another mail address).

User name	Register your Google account (user ID) and any characters which you want to use as a mail address. You can register any user name but you cannot set the same user name as another user's.
Password	Register the password for using your Google account.

- The Google account setup screen is also displayed when you activate an application for which a Google account is required for the first time.
- Screens other than those shown below may be displayed depending on the condition under which you operate.



*1 If you already have a Google account, tap [Existing].

*2 Tap [Join Google+] to join Google+.

STEP3: au ID Settings

You can use various services provided by au such as "au Simple Payment Service" in which you can purchase applications displayed on au Market and Google Play by setting an au ID. Also, make initial settings for au Wi-Fi SPOT which is a public wireless LAN service that enables you to use the comfortable high-speed Internet when you are out.

au ID	Register your au phone number or any other characters as an au ID. The same "au ID" as another user's cannot be registered.
au ID password	Register the password for using au ID.

- Alternatively, on the home screen, tap [APPS] → [au設定] (au settings) → [au Easy Setting] to set up.



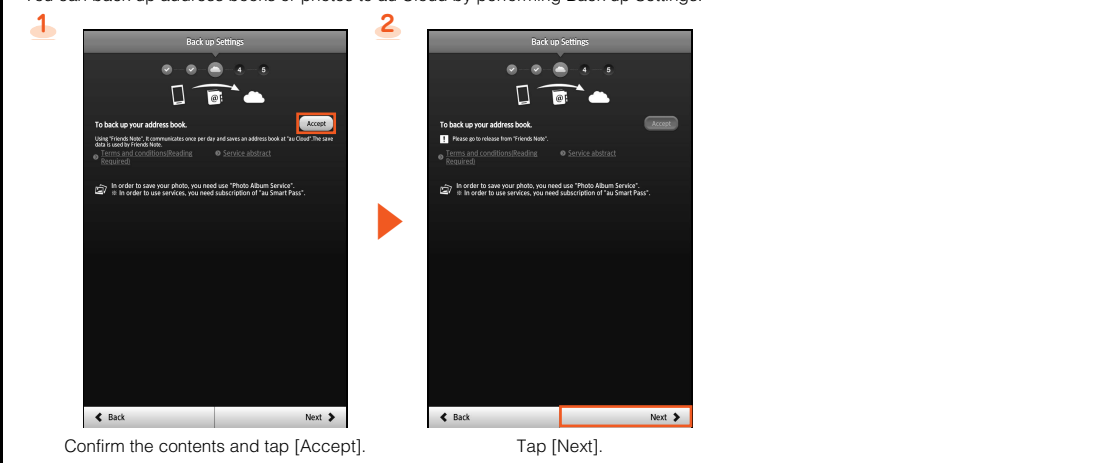
*1 The initial value is the four-digit security code you wrote on the application form.

*2 Tap "お好きなau IDを新規登録したい方はこちら" (For registering any au ID) to register a new au ID with other than au phone numbers. Tap "au IDをお持ちの方はこちら" (For using the au ID you already have) to set the au ID you have already owned.

*3 au ID registration is complete. Next, set the information for reissuing the password.

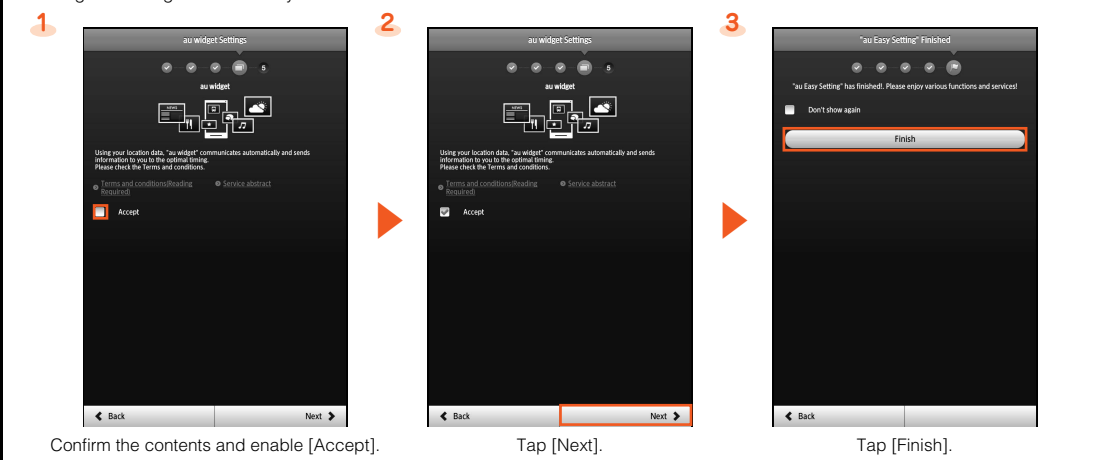
STEP4: Backup Settings

You can back up address books or photos to au Cloud by performing Back up Settings.



STEP5: au widget Settings

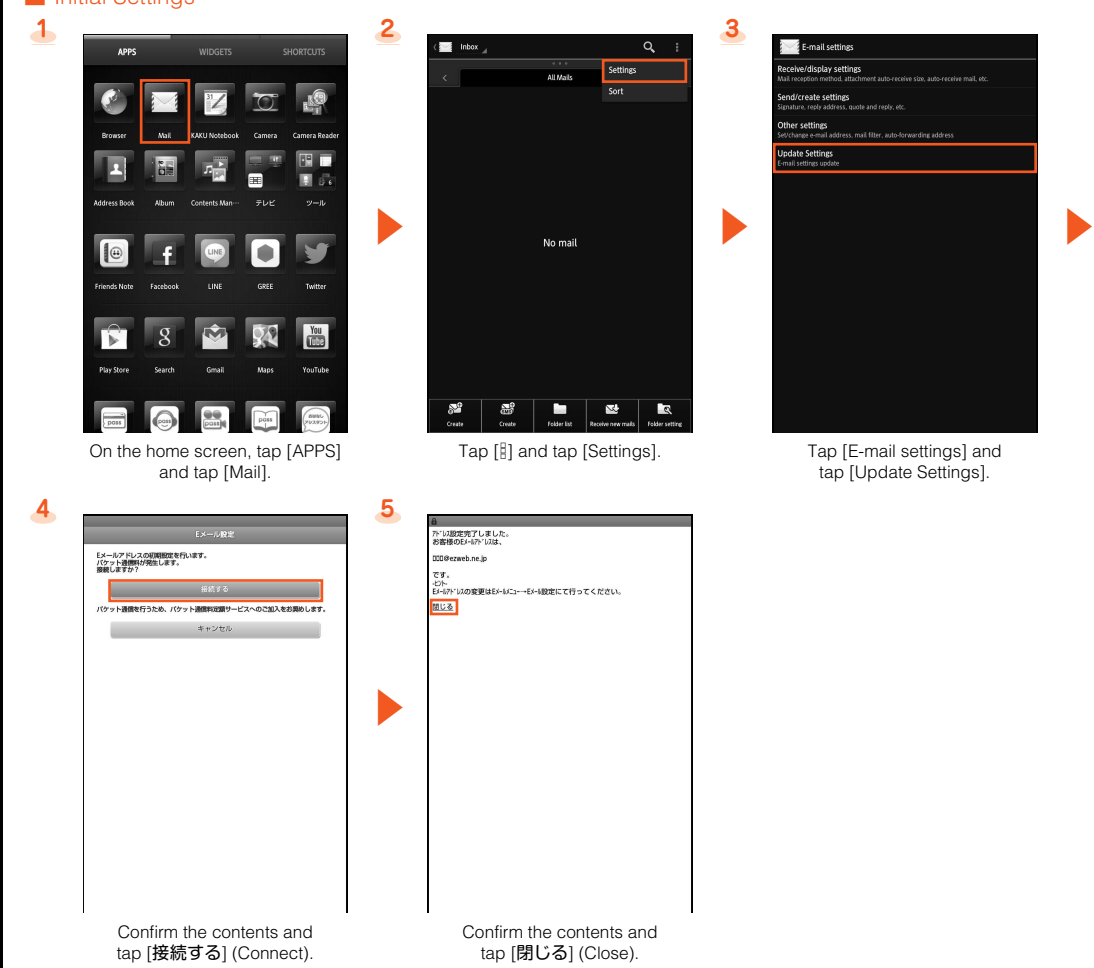
au widget is a widget that notifies you of latest information at the best time.



E-mail Setting and Changing E-mail Address

E-mail (@ezweb.ne.jp) is a service which enables you to exchange e-mails with other tablets or cell phones which support e-mail and with PCs. An e-mail address is set automatically in the initial settings. You can change the e-mail address set in the initial settings.

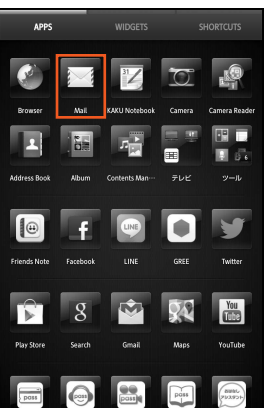
Initial Settings

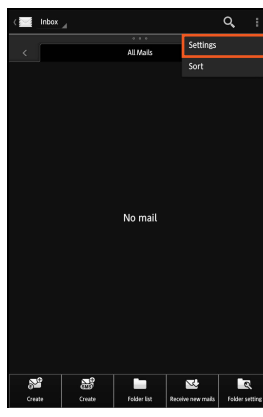


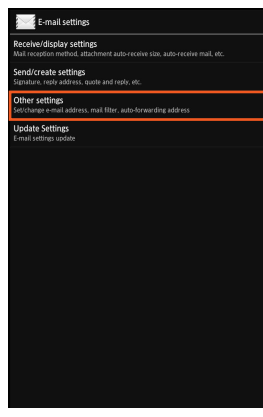
PC-mail settings

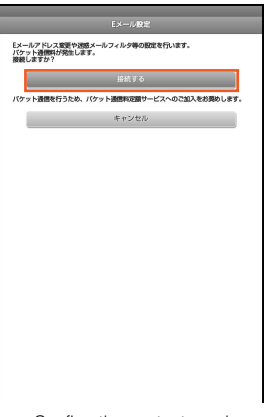
You can use a mail address other than one used for E-mail (@ezweb.ne.jp). For using PC-mail, PC-mail settings are required. When you use this for the first time, set by the following operations.
 On the home screen, tap [APPS] → [PC-mail] → Follow the on-screen instructions.
 * For details, refer to the "Instruction Manual application" (Japanese).

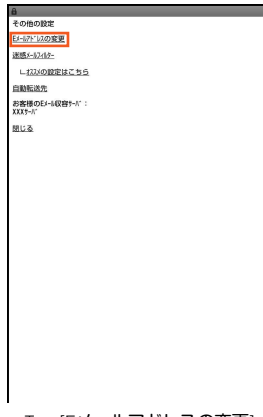
Changing E-mail Address

- 

On the home screen, tap [APPS] and tap [Mail].
- 

Tap [Settings] and tap [Settings].
- 

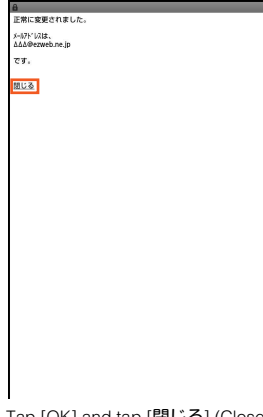
Tap [E-mail settings] and tap [Other settings].
- 

Confirm the contents and tap [接続する] (Connect).
- 

Tap [Eメールアドレスの変更] (Change e-mail address).
- 


Enter the security code and tap [送信] (Send).
- 

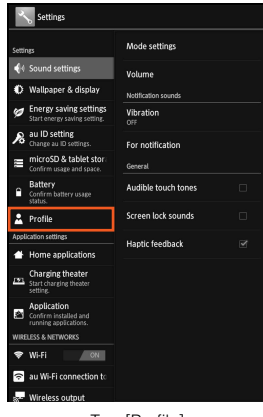
Confirm the contents and tap [承諾する] (Accept).
- 

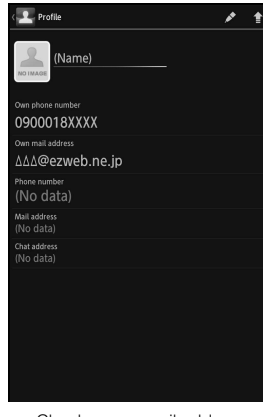
Enter an e-mail address and tap [送信] (Send).
- 

Tap [OK] and tap [閉じる] (Close).

Checking E-mail Address

- 

On the home screen, tap [APPS] and tap [Settings].
- 

Tap [Profile].
- 

Check your e-mail address on the profile screen.


Transferring, Viewing and Backing Up Data Using a microSD™ Memory Card

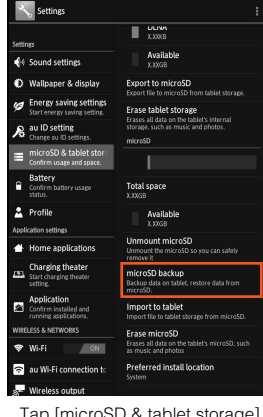
Transferring Data

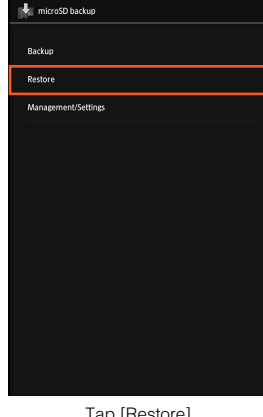
You can transfer data to the product from a previously used au terminal using a microSD™ memory card.

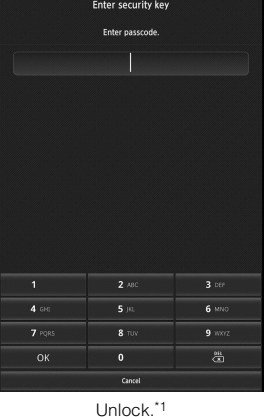
Data which can be transferred to the product	Address book, mail (e-mail, SMS), bookmark (favorites in the browser), schedule, notepad, user/learning dictionary (Wnn IME - SH edition) and data of KAKU Notebook*
--	--

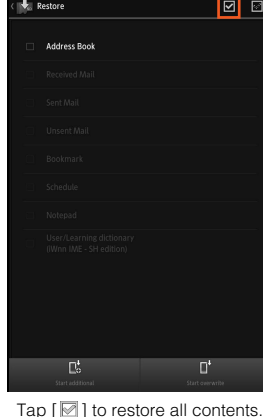
- * Use the "KAKU Notebook" application to transfer data of KAKU Notebook. For details, refer to the "Instruction Manual application" (Japanese).
- The data which can be transferred differ depending on the previously used au terminal. For details on the data which can be transferred and the method for transferring data to a microSD™ memory card, refer to the instruction manual of the previously used au terminal.
- Mail data of up to 2,000 received mails and 1,000 sent mails (including unsent mails) can be transferred to the product (The number of mails which can actually be saved may decrease depending on the free space on the main unit).
- Insert a microSD™ memory card with data to be transferred to the product in advance.
- Contents and the number of the screens to be displayed when transferring data differ depending on the data to be transferred.

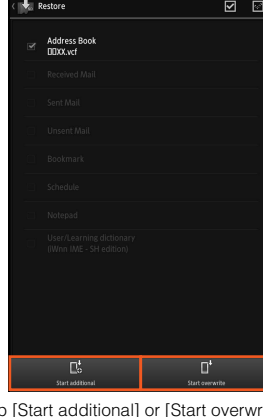
- 

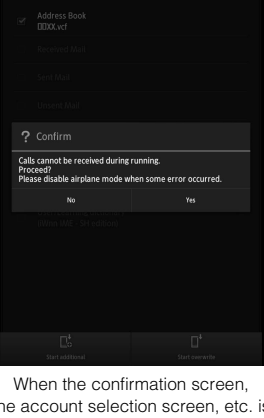
On the home screen, tap [APPS] and tap [Settings].
- 

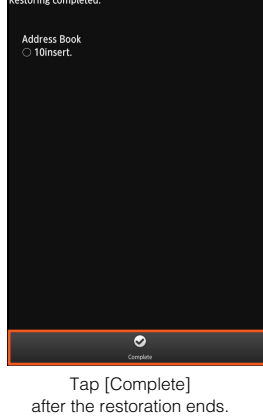
Tap [microSD & tablet storage] and tap [microSD backup].
- 

Tap [Restore].
- 

Unlock.*
- 

Tap [Restore] to restore all contents.
- 

Tap [Start additional] or [Start overwrite].²
- 

When the confirmation screen, the account selection screen, etc. is displayed, follow the on-screen instructions.
- 

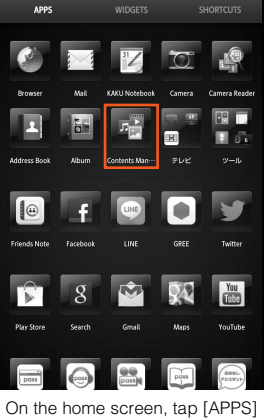
Tap [Complete] after the restoration ends.


* The security key is set to "1234" by default.
² If you perform "Start overwrite", the original data will be deleted.


Viewing/Playing Data

If you transfer data to a microSD™ memory card from a previously used au terminal, you can view/play the data with the product.

Data which can be viewed/played	Photo (image), movie (video), music, TV (1Seg) and document
---------------------------------	---

- 

On the home screen, tap [APPS] and tap [Contents Manager].
- 

Tap a category to display.
- 

Tap data to display.

Data Backup

To protect important data such as address book entries and mails, back up the data to a microSD™ memory card periodically.


Data which can be backed up	Address book, mail (e-mail, SMS), bookmark (favorites in the browser), schedule, notepad, user/learning dictionary (Wnn IME - SH edition) and data of KAKU Notebook*
-----------------------------	--

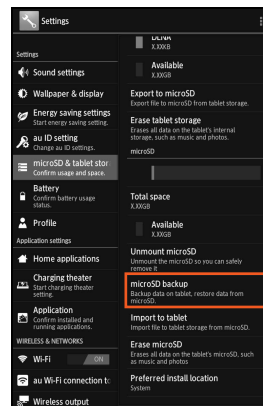
- * Use the "KAKU Notebook" application to back up data of KAKU Notebook. For details, refer to the "Instruction Manual application" (Japanese).
- For data saved on the main unit, move/copy them to a microSD™ memory card using Contents Manager etc. For details, refer to the "Instruction Manual application" (Japanese). Furthermore, the locations of the main data saved on the main unit are as follows.

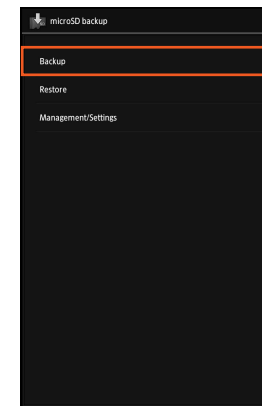
Data shot by camera	YmntYsdcardVDCIM\Y100SHARP
Data recorded by voice recorder	YmntYsdcardPRIVATE\YSHARP\YCM\MUSIC
Data saved by browser	YmntYsdcard\Download

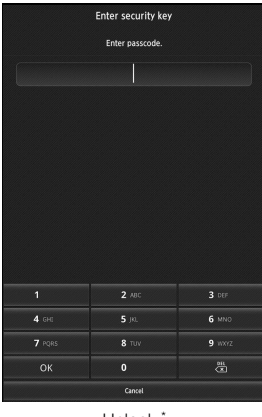
- You can download applications again only at the cost of communication charge using the same Google account/au ID as that used to purchase the applications.

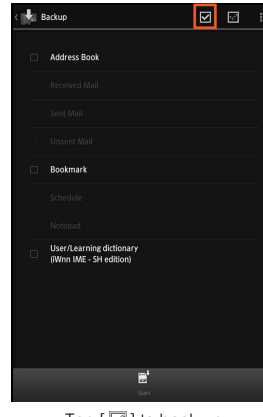
When the product is kept at an au shop for repairing, the memories will be deleted. Back up data in advance.

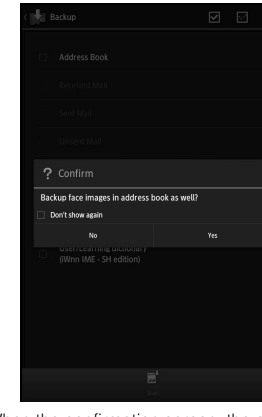
- 

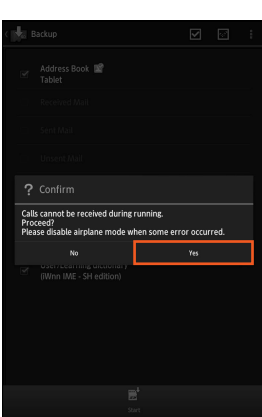
On the home screen, tap [APPS] and tap [Settings].
- 

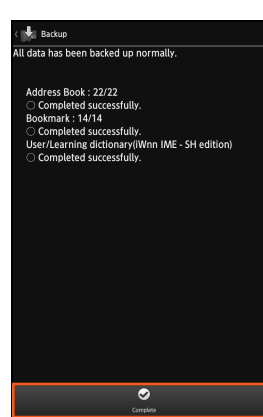
Tap [microSD & tablet storage] and tap [microSD backup].
- 

Tap [Backup].
- 

Unlock.*
- 

Tap [Backup] to back up all contents.
- 

When the confirmation screen, the account selection screen, etc. is displayed, follow the on-screen instructions.
- 

Tap [Start] and tap [Yes].
- 

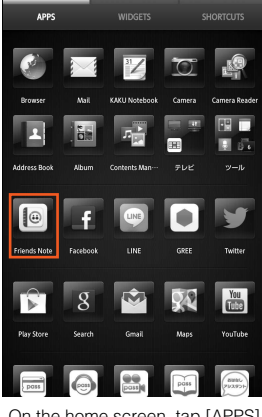
Tap [Complete] after the backup ends.

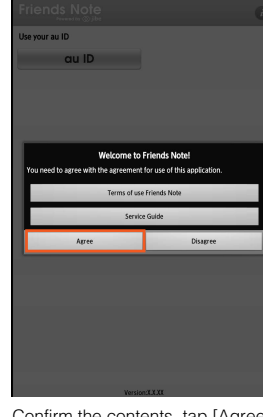
* The security key is set to "1234" by default.

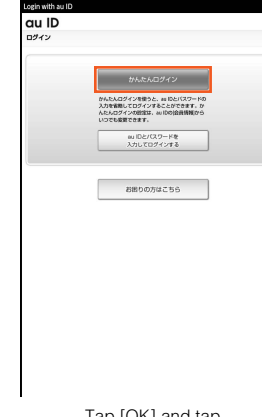
Transferring Address Books Using Friends Note (au Addressbook)

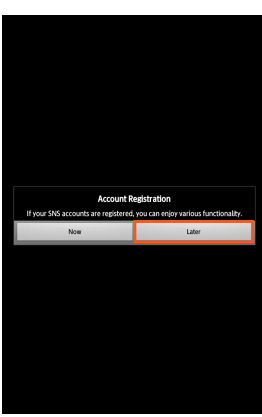
If you save the address book of the previously used au cell phone (au cell phones other than smartphones) on an Addressbook, you can transfer the address book to the product using Friends Note.

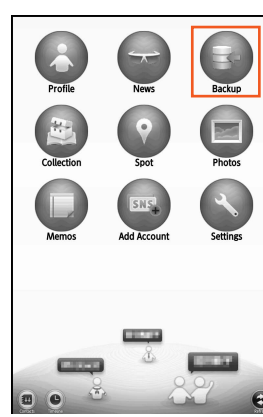
- To use this function, set "Keitai and PC Linkage Settings"¹ on the previously used au cell phone and save the address book on an Addressbook in advance. For detailed operations, refer to the instruction manual of the au cell phone or au homepage.
- This function is available only for the transference between an au cell phone which has a different phone number and the product. If you change models from another au terminal to the product or have smartphones and the product, use a microSD™ memory card to transfer the address book data.
- Set an au ID in advance.

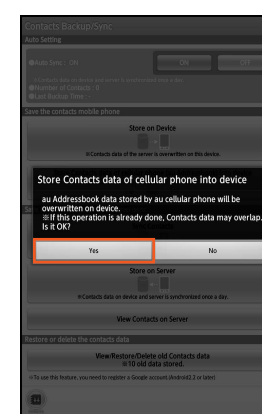
- 

On the home screen, tap [APPS] and tap [Friends Note].
- 

Confirm the contents, tap [Agree], confirm the contents and tap [Agree].
- 

Tap [OK] and tap [かんたんログイン] (Simple login).
- 

Tap [If device was changed from au cellular phone]² and tap [Later]³.
- 

Tap [Menu] and tap [Backup].
- 


Tap [Store Contacts data of cellular phone (au Addressbook) into device] and tap [Yes].

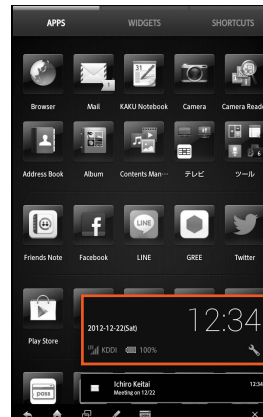
¹ For details on "Keitai and PC Linkage Settings", refer to the au homepage.
² This is not displayed if contacts are registered on the "Address Book" application.
³ To register an SNS account, tap "Now".

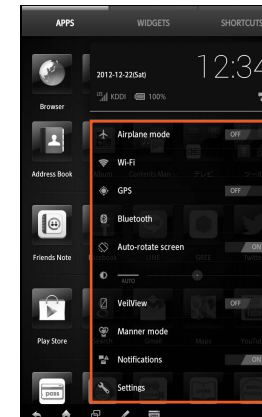
Reducing Battery Consumption

You can enable/disable functions and perform other settings by using "settings list". You can reduce the battery consumption by switching the settings frequently when not using the functions etc.

Using "Settings List"

- 

Tap the status area.
- 

Tap the status panel.
- 

Change settings from "settings list".

* Tap an item to display the setting screen, enable/disable the function with the ON/OFF key, etc. How to set the function differs depending on the function.

"Settings List"

You can set the following functions.

Airplane mode	Set Airplane mode.
Wi-Fi	Set the use of Wi-Fi®.
GPS	Set the use of the GPS function.
Bluetooth	Set the use of Bluetooth®.
Auto-rotate screen	Set the automatic rotation of the screen.
Brightness	Set the brightness of the screen.
VeilView	Set VeilView.
Manner mode	Set the manner mode.
Notifications	Set the display of notifications.
Settings	Display the setting screen.