

AQUOS K

SHF33

Setting Guide

Thank you for buying the "AQUOS K SHF33" (simply called the "product" from here on). This manual describes the settings and precautions for using the product.

* For illustrations and descriptions in this manual, refer to "Basic Manual" available on the au homepage and on the product.

* The company names and product names appearing in this manual are trademarks or registered trademarks of their respective holders.

* Phone illustrations and screen shots are for descriptive purposes only, and may differ from the actual product.

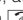
* In this manual, "microSD™" memory card (commercially available) and "microSDHC™" memory card (commercially available)" are abbreviated as "microSD memory card" or "microSD".

When using the product Describes things to note when using the product. Basic Operations Describes basic key operation and touch operation using Touch Cruiser EX. Preparing the Product for Use ■ Attaching/Removing Battery Pack ■ Attaching/Removing the au Nano IC Card 04 ■ Attaching/Removing the microSD Memory Card	■ Charging ■ Turning the Power On/Off Initial Settings Set an au ID etc. to use various services provided by au. ■ Switching the Display Language to English ■ au ID setting Making Wi-Fi® Settings Connect to the Internet using a wireless LAN (Wi-Fi®) environment. Checking Onscreen Status Check the signal reception strength, battery level, etc. onscreen.	E-mail Settings and Changing E-mail Address Set for using E-mail (@ezweb.ne.jp). An e-mail address is set automatically in the initial settings. You can change the e-mail address set in the initial settings. Transferring Data with the Data Storage App You can transfer data from your old au phone to the product. You can also back up data on the product to an au スマートパス (au Smart Pass) server or a microSD memory card. Reducing Battery Consumption You can reduce battery consumption by enabling energy saving.
---	---	---

May 2016, 1st Edition

Sold by: KDDI CORPORATION, OKINAWA CELLULAR TELEPHONE COMPANY
Manufactured by: SHARP CORPORATION

When using the product

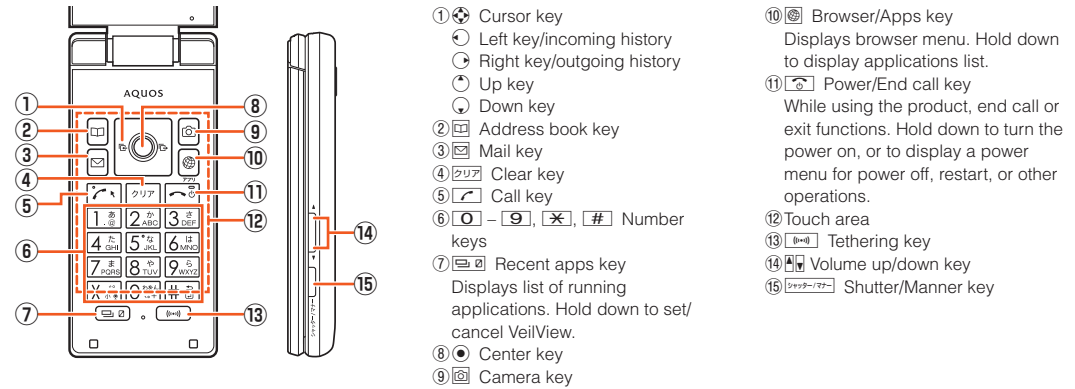
- Note the following when using the product.
- When you purchase the product, the battery is not fully charged. Be sure to charge the battery before use.
 - To maintain water/dust resistance, attach the back cover firmly.
 - To force the power off, hold down  for at least 8 seconds (after the product vibrates, release your finger and the power will turn off).

Basic Operations

Basic key operations and touch operation are described here. For detailed operation, refer to the "Basic Manual".


■ Key Names and Functions

Names of keys on the product and their functions are described.



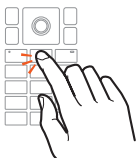
■ Touch Operation (Touch Cruiser EX)

Use your fingers in the touch area to operate in the same way as a touchpad (Touch Cruiser EX). Activating a function/application (browser, LINE, etc.) compatible with Touch Cruiser EX enables Touch Cruiser EX and "☛" (pointer) is displayed.

● Hold down  to toggle Touch Cruiser EX on/off. If a function/application is exited while Touch Cruiser EX is disabled, reactivating a Touch Cruiser-capable function/application does not enable Touch Cruiser EX.

Tap/Double tap

Gently tap the touch area. To double-tap, tap the same position twice.



Long touch

Keep gently touching the touch area. "☛" changes to "☛+☛". Tap the touch area or, after releasing your finger and several seconds of no operation, the indication returns to "☛".



Slide

Long-touch the touch area to change "☛" to "☛+☛". While gently touching the touch area, slide in the desired direction or to the desired position.



Flick

Long-touch the touch area to change "☛" to "☛+☛". Flick your finger on the touch area up, down, left, or right.



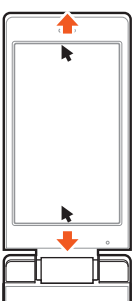
Pinch

While touching the touch area with two fingers, widen (pinch out) or close (pinch in) your fingers.



Auto scrolling

With "☛" moved to the edge of the screen, slide your finger toward off the screen to scroll. Release your finger to stop scrolling. Slide your finger in the scrolling direction to scroll faster.

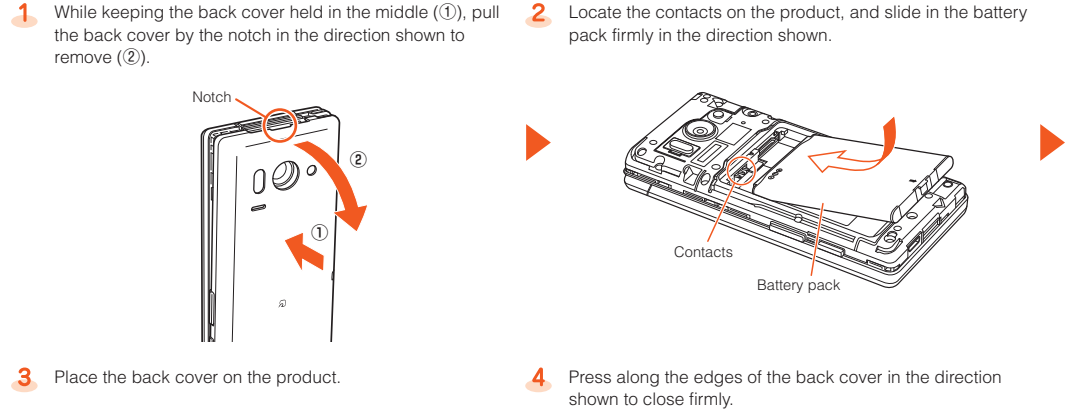


Preparing the Product for Use

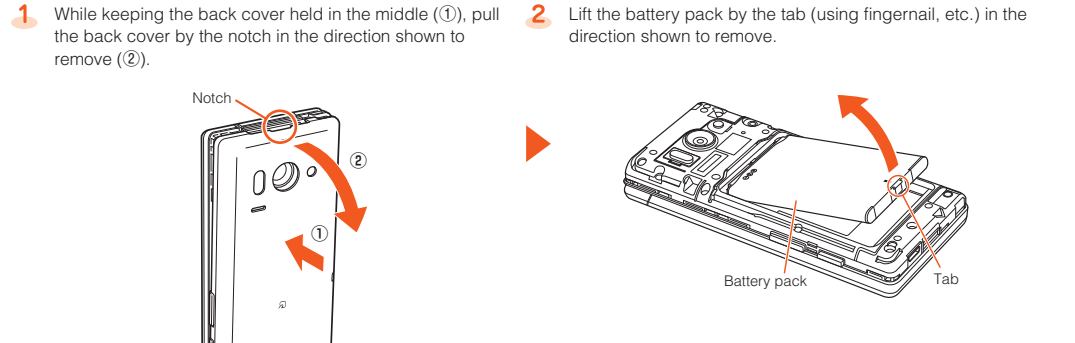
- Always turn the power off before installing or removing the battery pack, au Nano IC Card 04, or a microSD memory card.
- Attach the battery pack after checking that the au Nano IC Card 04 tray is firmly in place.
- To maintain water/dust resistance, firmly close the back cover without leaving any gaps.
- Attaching items improperly may result in damage to the battery pack or back cover.

■ Attaching/Removing Battery Pack

● Attaching

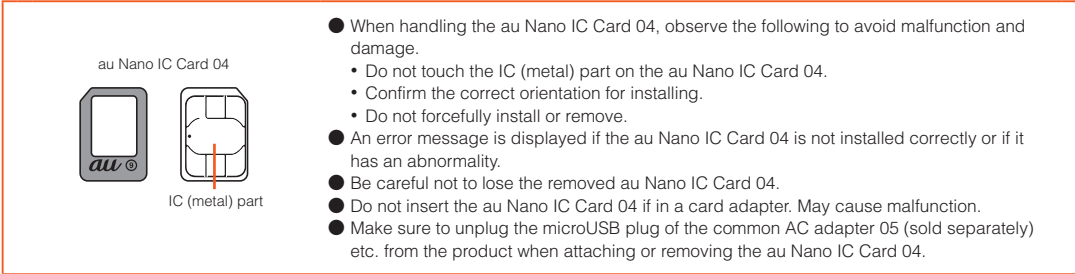


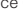
● Removing



■ Attaching/Removing the au Nano IC Card 04

The au Nano IC Card 04 contains your personal information such as your phone number. The product is compatible with au Nano IC Card 04.

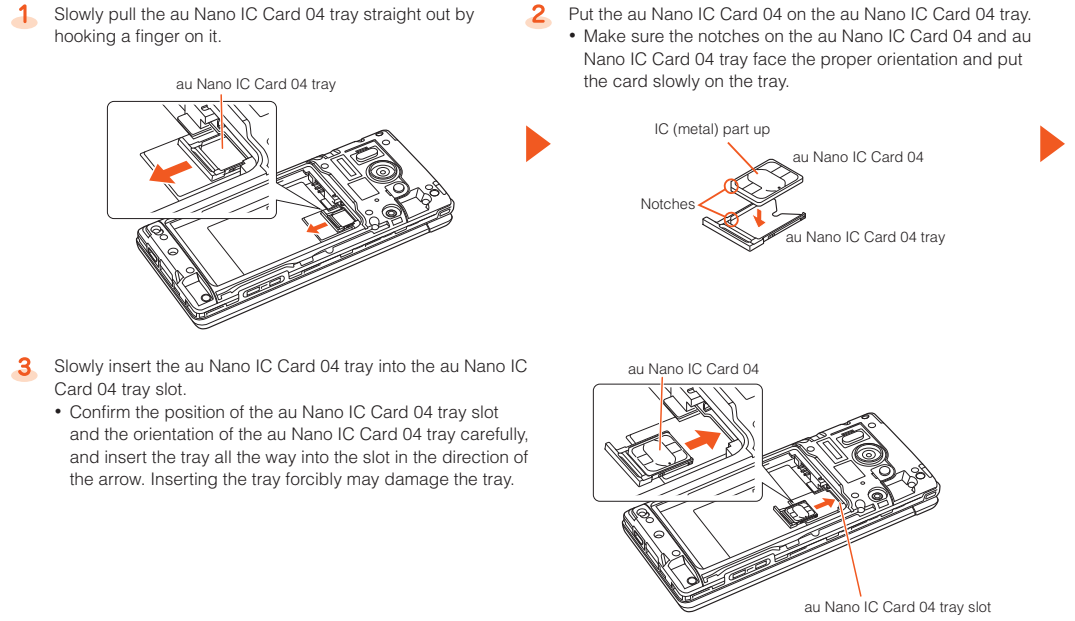


- When the au Nano IC Card 04 is not inserted
If the au Nano IC Card 04 is not inserted, the following operations are unavailable.
 - Making/Receiving a call
 - Sending/Receiving SMS
 - Making initial e-mail settings and sending/receiving e-mail (@ezweb.ne.jp)
 - Setting SIM card lock
 - Confirming your own phone number and e-mail address
- * Emergency calls also cannot be made to 110 (police), 119 (fire department), 118 (coast guard), or to 157 (Customer Service Center). However, calls can be made if signal strength during GSM/UMTS/LTE roaming is any level other than  (out of service area) (emergency numbers depend on the country; calls may not connect).
- Besides the above, functions which require your phone number etc. may not be available.
You cannot insert and use the product with an au IC card other than the au Nano IC Card 04.

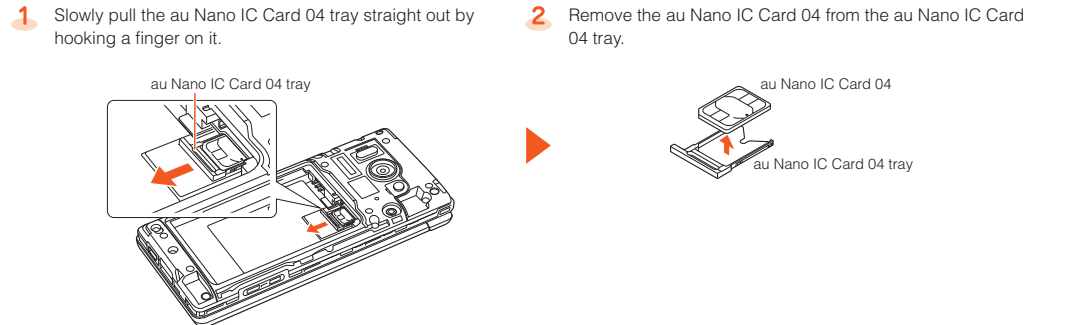
- Restricting product use with a PIN code
Your au Nano IC Card 04 contains valuable personal information. To protect this information, you can change the PIN code and lock the SIM card to restrict use by other persons.

- Turn off the power and remove the battery pack and any microSD memory card beforehand.

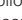
● Attaching



● Removing



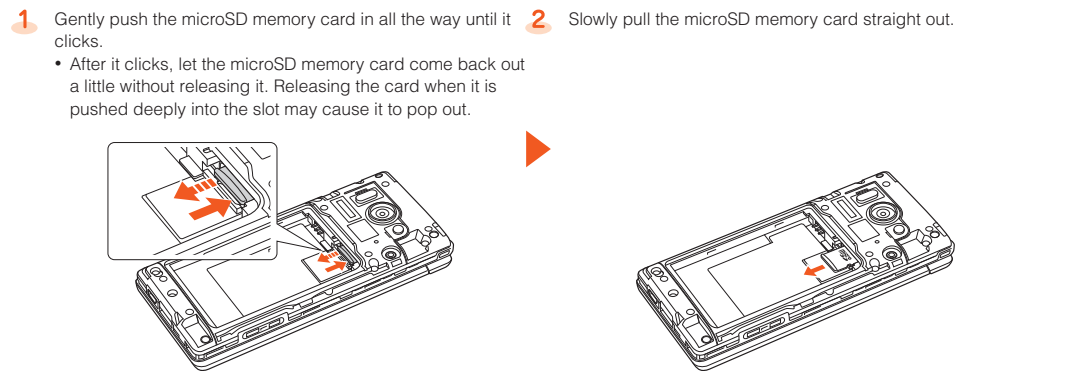
■ Attaching/Removing the microSD Memory Card

- You can save, move, and copy data by attaching a microSD memory card (including microSDHC memory card) in the product.
- Turn off the power and remove the battery pack beforehand.
 - A microSD memory card initialized on other devices may not work on the product properly. Format the microSD memory card on this product. Use the following steps.
When the standby screen is displayed, press  → [Settings] → [Other settings] → [Storage] → [Erase microSD] → [Erase SD card] → Unlock → [Erase everything].
 - Make sure that the top/bottom and front/rear of the microSD memory card are facing correctly. Trying to force a wrongly oriented card into the slot could make it impossible to remove the card or result in damage.
 - Do not touch the terminal part of a microSD memory card.

● Attaching



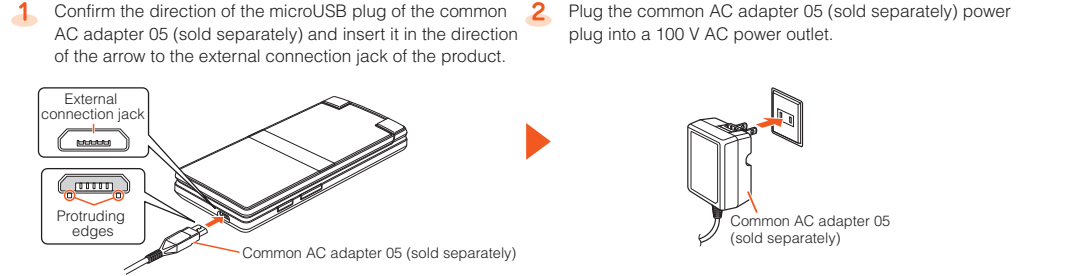
● Removing



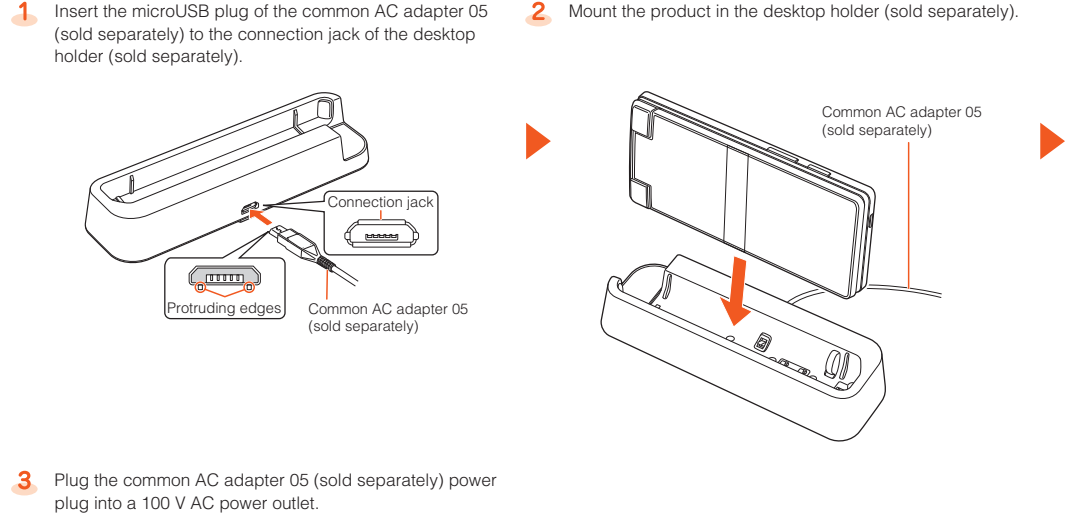
■ Charging

- While charging, the charging/incoming indicator illuminates in red. When the battery pack is charged to approximately 95%, the charging/incoming indicator illuminates in green. When charging is finished, the charging/incoming indicator goes out.
- While charging, it is normal for the product to become hot.
- Depending on the operation procedure and usage environment, the temperature inside the product may get high and the product may even get heated. In such case, charging may stop for security reasons.
- If you perform various operations with a specified charger (sold separately) connected to the product, charging/discharging may take place repeatedly in a short time. Frequently charging the internal battery shortens its service life.
- If the charging/incoming indicator flashes in red, check whether the battery pack is attached and connected properly. If the indicator continues to flash, stop charging and contact an au shop or the Keitai Guarantee Service Center.

● Charging with a common AC adapter 05 (sold separately)

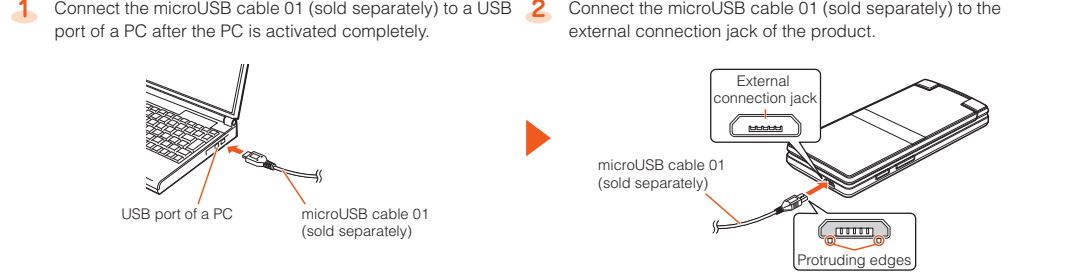


● Charging with a desktop holder (sold separately) and common AC adapter 05 (sold separately)



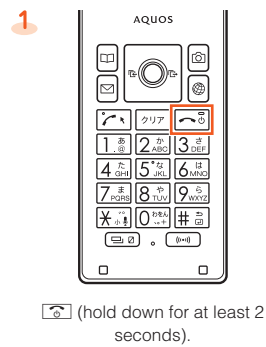
● Charging with a PC

If you use the microUSB cable to charge the battery, it may take the battery longer to be fully charged than if you use the specified AC adapter (sold separately).

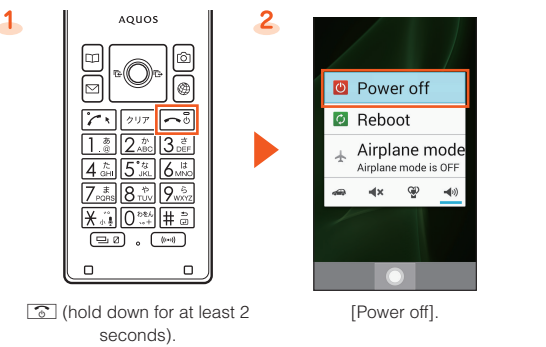


■ Turning the Power On/Off

● Turning the Power On



● Turning the Power Off



Initial Settings

The first time the power is turned on, a screen for making initial settings is displayed, and you can set an au ID.

- To make initial settings in English, press → **[はい]** (Yes) once the **端末初期設定** (Device initial settings) screen is displayed, cancel initial settings, and then switch to English display. After switching to English display, restart the product, and an English screen for making initial settings will be displayed.

Switching the Display Language to English

You can switch the display language for function names and other items to English.



When the standby screen is displayed, press → **[設定]** (Settings).

[その他] (Other settings) → **[言語(Language)を選択]** (Select language).

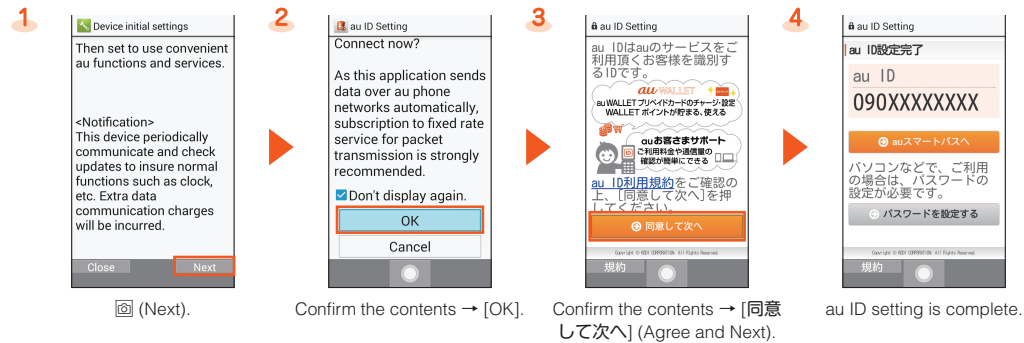
[English].

au ID setting

An au ID is an identifier for customers using au services. Register your au phone number as an au ID.

By setting an au ID, you can use various services provided by au such as au スマートパス(au Smart Pass), auお客さまサポート(au Customer Support), and au WALLET.

- Alternatively, when the standby screen is displayed, press → **[Settings]** → **[au ID setting]**.



(Next).

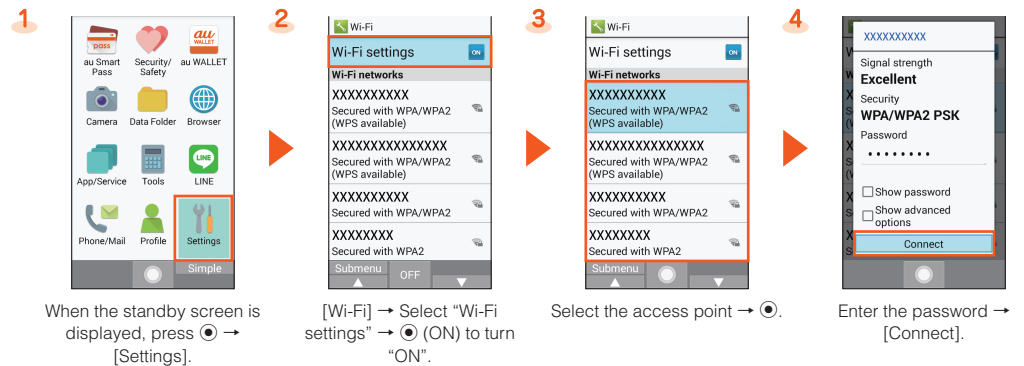
Confirm the contents → **[OK]**.

Confirm the contents → **[同意して次へ]** (Agree and Next).

au ID setting is complete.

Making Wi-Fi® Settings

You can use a household wireless LAN (Wi-Fi®) environment or a public wireless LAN environment when outside to connect to an Internet service.



When the standby screen is displayed, press → **[Settings]**.

[Wi-Fi] → Select **"Wi-Fi settings"** → **(ON)** (ON) to turn "ON".

Select the access point → .

Enter the password → **[Connect]**.

Checking Onscreen Status

Check the signal strength and battery level onscreen.



- ① Wi-Fi® signal strength
 - : Level display
 - During a communication, the icon is displayed with superimposed.
 - : Level display : Out of service area
 - The icon indicating network is displayed at the upper left.
 - : 4G (LTE) available
 - : Roaming
 - During a communication, the icon is displayed with superimposed.
- ② Signal strength (Receiving electric field)
 - : Level display : Out of service area
 - The icon indicating network is displayed at the upper left.
 - : 4G (LTE) available
 - : Roaming
 - During a communication, the icon is displayed with superimposed.
- ③ Battery level
 - : Battery level display : No battery
 - While charging, the battery icon is displayed with superimposed.

E-mail Settings and Changing E-mail Address

E-mail (@ezweb.ne.jp) is a service which enables you to exchange e-mails with other cell phones which support e-mail and with PCs. An e-mail address is set automatically in the initial settings. You can change the e-mail address set in the initial settings.

Initial Settings



When the standby screen is displayed, press .

Confirm the contents → **[接続する]** (Connect).

Confirm the contents → **[閉じる]** (Close).

Changing E-mail Address



Enter the security code → **[送信]** (Send).

Confirm the contents → **[承諾する]** (Accept).

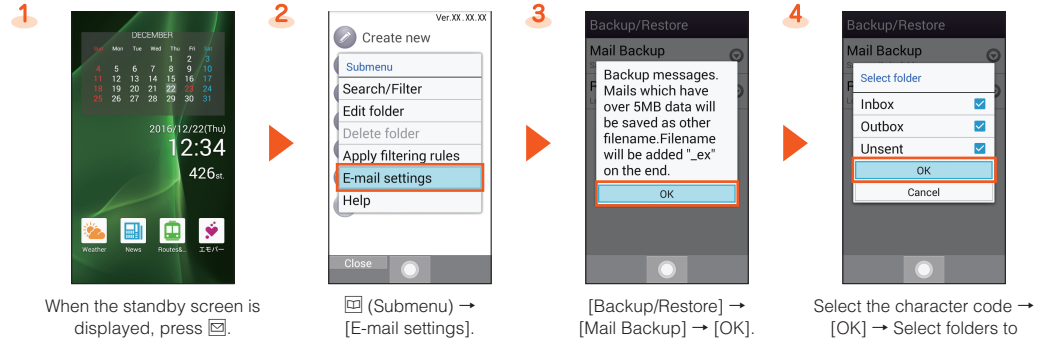
Enter an e-mail address → **[送信]** (Send).

[OK] → **[閉じる]** (Close).

* The security code is the 4-digit number set at subscription.

Backing Up E-mail

- If a microSD memory card is inserted into the product, e-mails are saved on the card. If not, they are saved on the internal memory.



When the standby screen is displayed, press .

(Submenu) → **[E-mail settings]**.

[Backup/Restore] → **[Mail Backup]** → **[OK]**.

Select the character code → **[OK]** → Select folders to back up → **[OK]**.

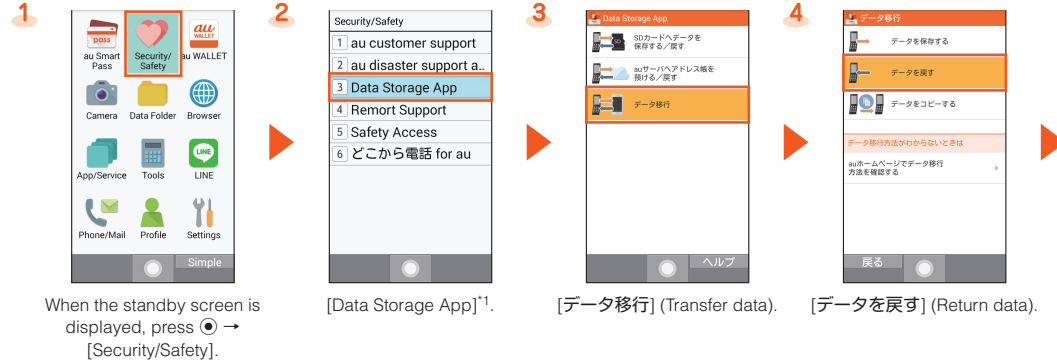
Transferring Data with the Data Storage App

You can transfer data from your old au phone to the product. You can also back up data on the product to an au スマートパス(au Smart Pass) server or a microSD memory card.

- To return data using a microSD memory card, save the data from the old au phone to the microSD memory card beforehand.
 - * For a smartphone, back up data with the au Backup App. For a cell phone, back up contacts with the microSD menu.

How to Copy/Restore Data with the au Backup App

- Restoring contacts, photos, etc.



When the standby screen is displayed, press → **[Security/Safety]**.

[Data Storage App]¹.

[データ移行] (Transfer data).

[データを戻す] (Return data).



Select how to return data² → .

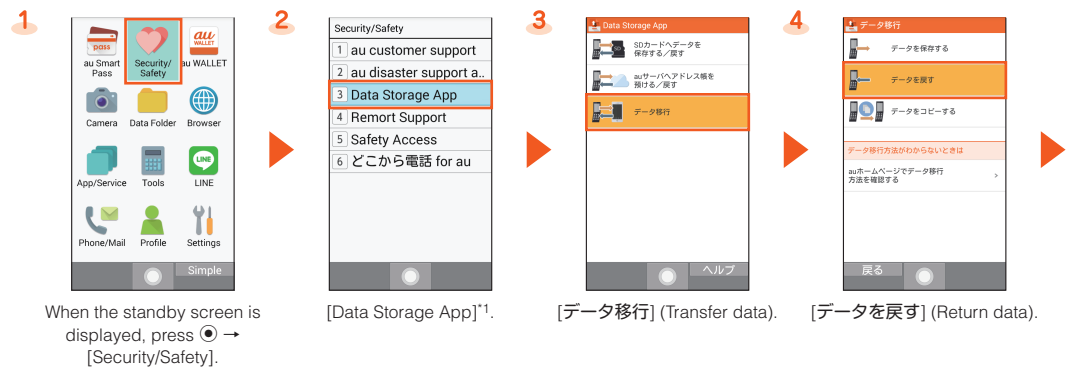
If you selected "SDカードから戻す" (Return from SD card), select "アドレス帳や画像などを戻す" (Return address book, images, etc.)³ → .

Select data to return, then press **(次へ/Next)**⁴ → **(完了/Done)**.

Automatically download address book⁵ → **(完了/Done)**.

- * If a confirmation screen is displayed for terms of use, privacy policy, etc., follow the onscreen instructions.
- * To return data with "auスマートパスから戻す" (Return from au Smart Pass) (data stored on an au Smart Pass server), you must set an au ID.
- * Not displayed if you selected "auスマートパスから戻す" (Return from au Smart Pass) at step 5.
- * If a confirmation screen, etc. is displayed, follow the onscreen instructions.
- * If a confirmation screen is displayed for connecting Wi-Fi®, follow the onscreen instructions.

Copying cell phone data



When the standby screen is displayed, press → **[Security/Safety]**.

[Data Storage App]¹.

[データ移行] (Transfer data).

[データを戻す] (Return data).



[SDカードから戻す] (Return from SD card).

[ケータイデータ復元] (Copy cell phone data).

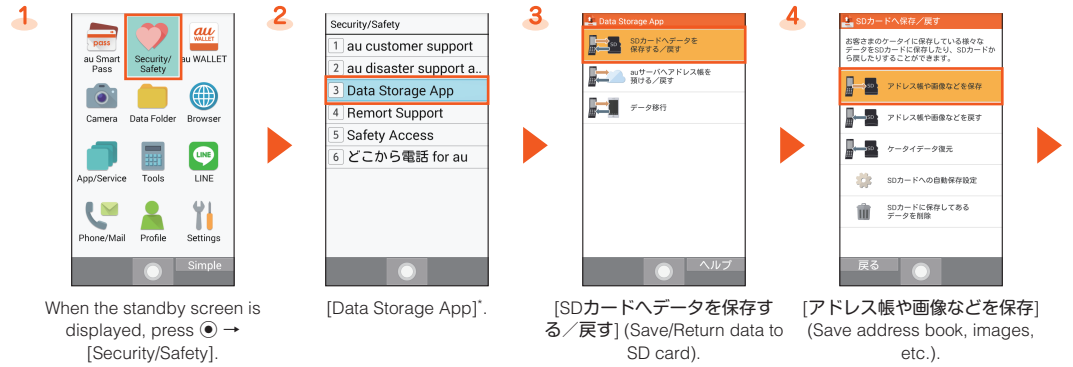
Select data to copy → **(次へ/Next)**².

(完了/Finish).

- * If a confirmation screen is displayed for terms of use, privacy policy, etc., follow the onscreen instructions.
- * If a confirmation screen, etc. is displayed, follow the onscreen instructions.

How to Save Data

- Saving data to a microSD memory card manually



When the standby screen is displayed, press → **[Security/Safety]**.

[Data Storage App]¹.

[SDカードへデータを保存する/戻す] (Save/Return data to SD card).

[アドレス帳や画像などを保存] (Save address book, images, etc.).



Select data to back up → **(次へ/Next)**.

(完了/Finish).

- * If a confirmation screen is displayed for terms of use, privacy policy, etc., follow the onscreen instructions.

Setting automatic backup



When the standby screen is displayed, press → **[Security/Safety]**.

[Data Storage App]¹.

[SDカードへデータを保存する/戻す] (Save/Return data to SD card).

[SDカードへの自動保存設定] (Automatic SD card save settings).



Select "保存する"(Save) → **(ON)** to turn "ON" → **"保存データ種別"** (Data type to save) and set **"自動開始日付"** (Auto-start date/time).

- * If a confirmation screen is displayed for terms of use, privacy policy, etc., follow the onscreen instructions.

Viewing/Playing data

You can view/play data on the product by the following operations.

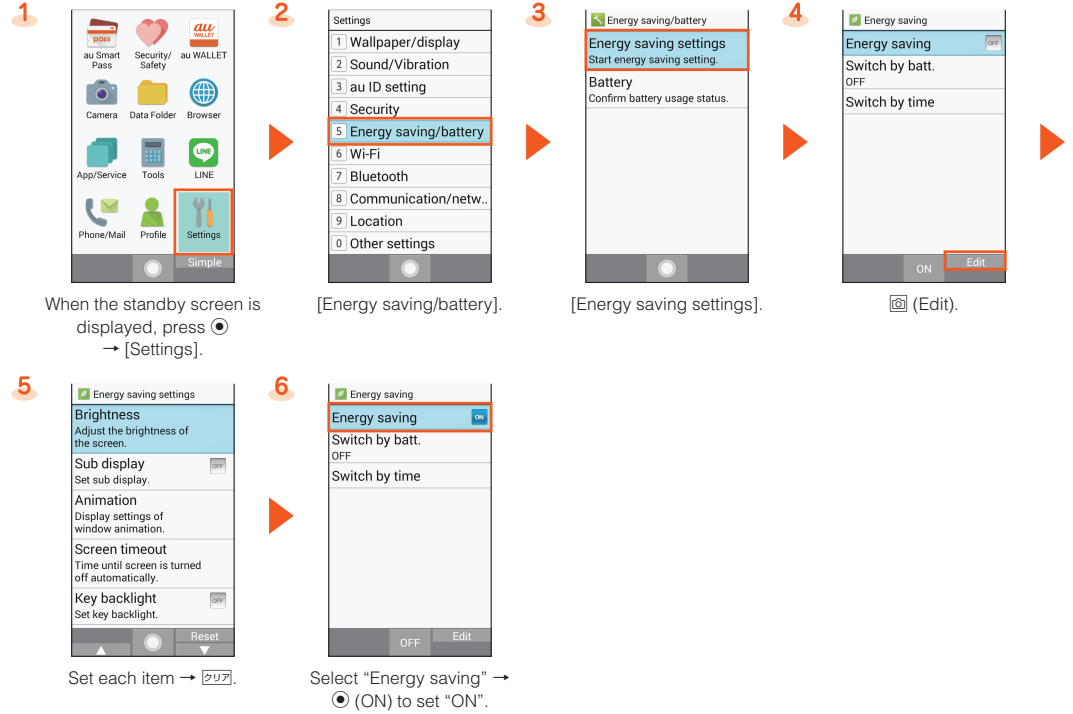
- When the standby screen is displayed, press → Select the category → → Select the data to display → .

* Alternatively, you can select **(Submenu)** → **[Move/copy]** while data is selected to move or copy data to a microSD memory card.

Reducing Battery Consumption

You can reduce battery consumption by enabling energy saving.

- Enabling energy saving may prevent some applications from operating properly.



Set each item → .

Select "Energy saving" → **(ON)** to set "ON".