



# Galaxy Note9

## Setting Guide

SCV40

Thank you for purchasing the Galaxy Note9 (referred to as the "product" in this manual). In this guide, settings for using the product are described.

You can use the "Online manual" (in Japanese only) which describes explanation of various functions by the following operation.

**On the home screen, flick up or flick down → [Galaxy] → [取扱説明書 (Online Manual)]**



This manual is described with the content of Android 8.1.

For the latest information, please refer to the "設定ガイド (Setting Guide)" (Japanese) available on the au homepage.

(<https://www.au.com/support/service/mobile/guide/manual/> (in Japanese only)) Company names and product names referred to in this manual are trademarks or registered trademarks of respective companies.

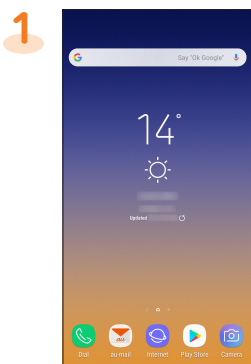
Sold by: KDDI CORPORATION, OKINAWA CELLULAR TELEPHONE COMPANY

Imported by: SAMSUNG ELECTRONICS JAPAN Co., Ltd.

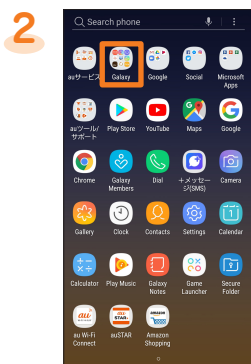
Manufactured by: Samsung Electronics Co., Ltd.

October 2018, 1st Edition

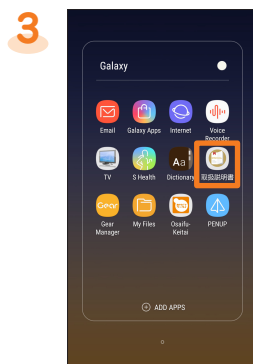
### ■ Using on this product



On the home screen, flick up or flick down



[Galaxy]



[取扱説明書 (Online Manual)]

You can use the online manual.

\* If the confirmation screen of how to use is displayed, follow the on-screen instructions.

### ■ Using on the PC, etc.

Refer to au homepage.

<https://www.au.com/online-manual/scv40/> (in Japanese only)

## Initial settings



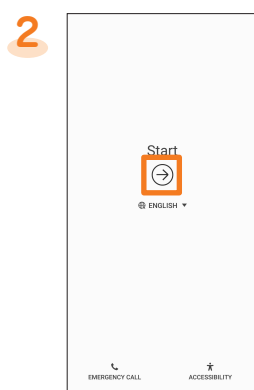
When turns ON the product for the first time, the initial setting screen appears automatically. Follow the guidance to make the settings.

\* Depending on the settings, setting contents and displays may differ.

### ■ STEP START



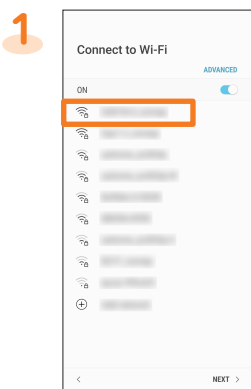
[日本語 (Japanese)] → [English] → [OK]



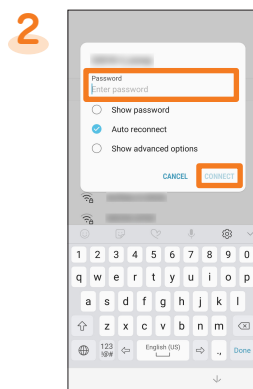
[ → ]

● To change the language after it has been initially set, on the home screen, flick up or flick down → [設定 (Settings)] → [一般管理 (General management)] → [言語とキーボード (Language and input)] → [言語 (Language)] → [言語を追加 (Add language)] → select language you want to use → [標準に設定 (SET AS DEFAULT)].

### ■ STEP 1: Wireless LAN (Wi-Fi<sup>®</sup>) function setting



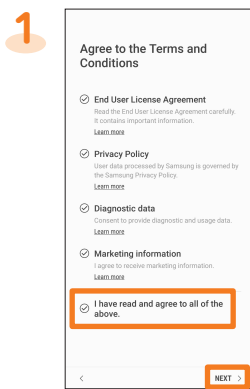
Tap Wi-Fi<sup>®</sup> network to connect  
\* Tap "NEXT" to set later.



Enter a password (security key) → [CONNECT] → [NEXT]

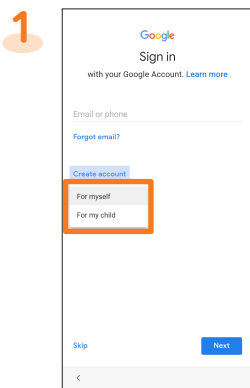
- Password (security key) is set on access point. Check the password in advance.
- If an access point device supports WPS Push button system, in step 1, [ADVANCED] → [WPS push button], and press WPS button on the access point device within 2 minutes to connect Wi-Fi<sup>®</sup> network.
- If an access point device supports WPS PIN code system, in step 1, [ADVANCED] → [WPS PIN entry], and enter PIN code on the access point device to connect Wi-Fi<sup>®</sup> network.

### ■ STEP 2: Checking the terms and conditions

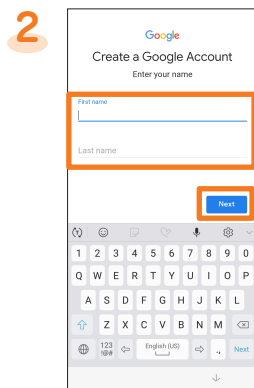


Tap "Learn more" from each agreement → confirm the contents → [ < ] → after confirming all the contents, check "I have read and agree to all of the above." → [NEXT]

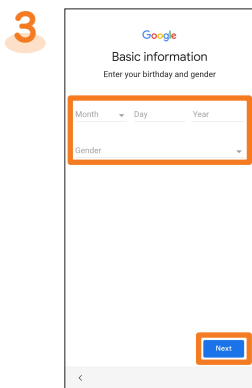
### ■ STEP 3: Google Account setting



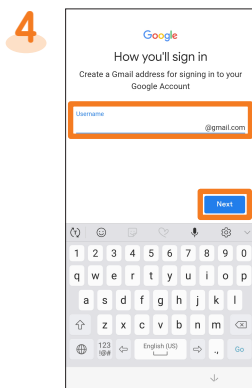
[Create account] → [For myself]/[For my child]<sup>\*1</sup>



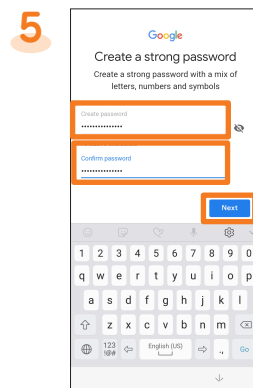
Enter your "First name" and "Last name" → [Next]



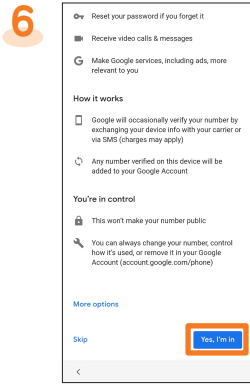
Enter your birthday and select gender → [Next]



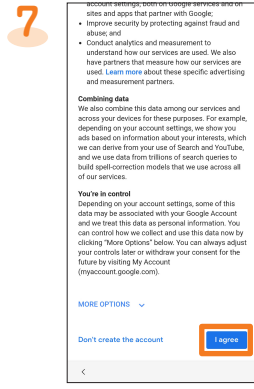
Enter your user name → [Next]



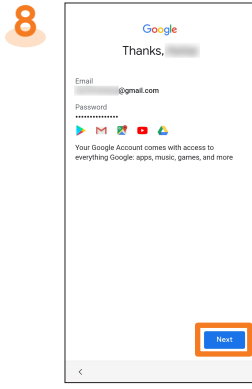
Enter your password → reenter the password → [Next]



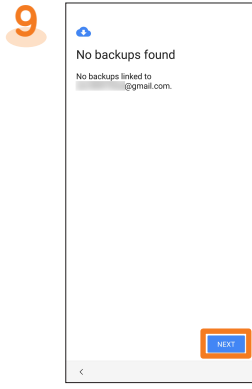
Confirm the contents → [Yes, I'm in]



Confirm the contents → [I agree]



[Next]

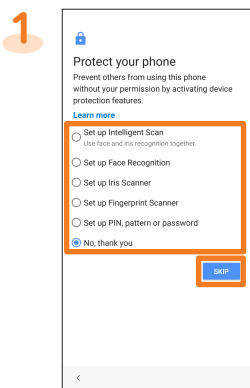


[NEXT]

- Set up Google account to use Google applications such as "Gmail", and "Google Play". Gmail address "(User name)@gmail.com" is automatically created by user name set in Google account.
- If you already have a Google account, tap the "Email or phone" field in step 1.

\*1 In this manual, select "For myself". To create account for child, follow the on-screen instructions.

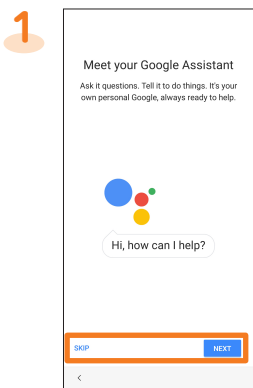
### ■ STEP 4: Protect setting



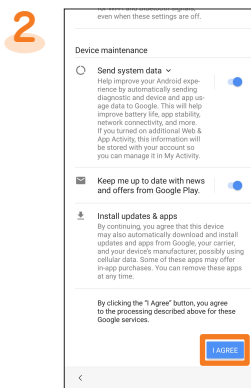
Set whether to protect the product

- When protecting the product, select "Set up Intelligent Scan", "Set up Face Recognition", "Set up Iris Scanner", "Set up Fingerprint Scanner" or "Set up PIN, pattern or password".
- When not protecting the product, select "No, thank you" → [SKIP] → [SKIP ANYWAY].

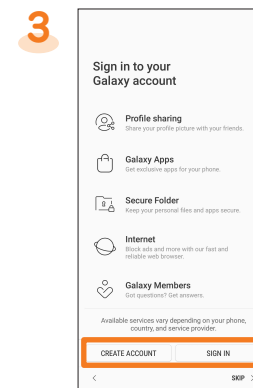
### ■ STEP 5: Functions/Service setting



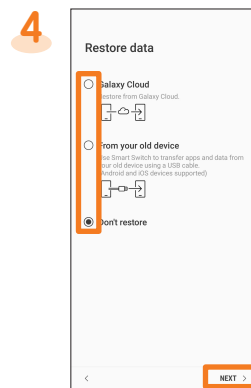
Set whether to enable the Assistant



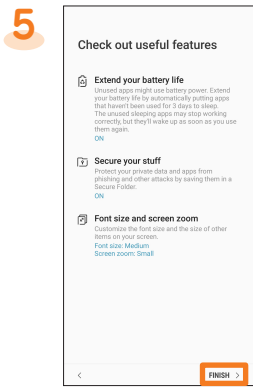
Confirm the contents, [I AGREE]<sup>\*1\*2</sup>



Set Galaxy account as required<sup>\*3</sup>



Set whether to restore the data<sup>\*4</sup>



[FINISH]<sup>\*5\*6</sup>

\*1 Tap "•" to "•" to disable the functions.

\*2 If the "Can't restore" confirmation screen is displayed, tap "OK".

\*3 If you do not set the Galaxy account, [SKIP] → [SKIP].

\*4 In this manual, select "Don't restore" → [NEXT]. To restore the data, follow the on-screen instructions.

\*5 Set font size, screen zoom or battery life extending, etc. as required.

\*6 After "Initial settings" is completed, "au Initial Setting" needs to set. For details, please read the back page.

## au Initial Setting

1

[GET STARTED]\*<sup>1</sup>

2

[Sign in]\*<sup>2</sup>

3

Enter a security number\*<sup>3</sup>  
→ [次へ (Next)]

4

Enter a password → [同意して次へ (Agree and next)]

5

[次へ (Next)]

6

[OK]

7

[ALLOW]\*<sup>4</sup>

8

Check the apps to install\*<sup>5</sup>  
→ [Next]

9

Check the content to set → [Next]

10

[Finish]\*<sup>6</sup>

- On au initial setting, you can make settings for updating pre-installed applications, setting au ID, downloading applications previously used or using this product more conveniently.
- When you have set an au ID, you can use various au services including "au Simple Payment Service" which offers you a simple way to purchase applications from au Smart Pass and Google Play.

\*<sup>1</sup> Check "Update", if you want to update pre-installed applications.  
\*<sup>2</sup> If you have registered an au ID previously, step 3 and 4 are not displayed. Proceed to step 5.  
\*<sup>3</sup> The security number is the four-digit security code you wrote on the application form.  
\*<sup>4</sup> A confirmation screen is displayed for application permission several times. Continue by following the on-screen instructions.  
\*<sup>5</sup> If "Select apps" is displayed in the "Backed up" field, you can confirm the application by tapping.  
\*<sup>6</sup> If you have backup data in "Data Storage App" application, the data can be returned by tapping "Data Storage App".

## au-mail settings

### Initial Setup

The au-mail address will be determined automatically after initial setup.

- Initial setup cannot be available with Wi-Fi\* connecting.
- To use au-mail, subscription to LTE NET is required.
- Operation and screen may be changed without notice.

1

On the home screen, [au-mail]

2

Confirm the content → [Agree]

3

Checking the au-mail address → [閉じる (Close)]

\* If the confirmation screen is displayed, follow the on-screen instructions.

### Checking au-mail address

- On the home screen, [au-mail] → [≡] → [E-mail information]  
Your au-mail address appears in the E-mail address field.

### Checking how to use au-mail application

1

On the home screen, [au-mail]

2

[≡]

3

[Operation guide]  
\* Tap the item which you want to check.

### Changing your au-mail address

The au-mail address can be changed which automatically decided by initial setup.

- On the home screen, [au-mail] → [≡] → [Change Address/Setting Filter]
- [メールアドレスの変更へ (To Change E-mail address)] → enter the security code → [送信 (Send)]
- Confirm the content → [承諾する (Accept)]
- Select "ご希望のメールアドレスに変更する (Change to your desired e-mail address)" → enter au-mail address → [送信 (Send)]
- [OK] → [閉じる (Close)]

## How to transfer data from the au Settings Menu

You can restore/store data from your previous au phone to this product using a microSD memory card or au server.

- If you restore data using au server, store the data using your previous au phone to au server in advance. You need to set up an au ID to use the au server. (If your previous au phone does not have the au Settings Menu, use the au Cloud app.)
- If you restore data using a microSD memory card, save the data using your previous au phone to a microSD memory card in advance. (If your previous au phone does not have the au Settings Menu, use the au backup app.)

1

On the home screen, flick up or flick down → [Settings]

2

[au Settings Menu]

3

[Data Transfer]  
\* If the confirmation screen is displayed, follow the on-screen instructions.

4

[機種変更はこちら (Model changing is here)] and perform data transfer according to the screen guidance.

If you want to store your pictures, address book (contacts), etc. automatically to the au server using "データお預かり(Data Storage)" app, you can set up by following procedure.

- On the home screen, flick up or flick down → [Settings] → [au Settings Menu] → [Backup Setting] → select the type of data to automatically store

## Setting screen timeout

1

On the home screen, flick up or flick down → [Settings]

2

[Display]

3

[Screen timeout]

4

Tap the time until screen turns off

## Diagnosis regularly

1

On the Applications screen, [auツール/サポート (au tool/support)] → [故障紛失サポート (Repair and Delivery Service)]

2

[クイック診断してみる (Try quick diagnosis)]

3

[各種設定 (Various settings)]

4

Tap "定期クリーニング通知 (Notification of regular cleaning)" to "ON"

Continue by following the on-screen instructions.

\* Please diagnose with "クイック診断してみる (Try quick diagnosis)", when you receive the notification.