

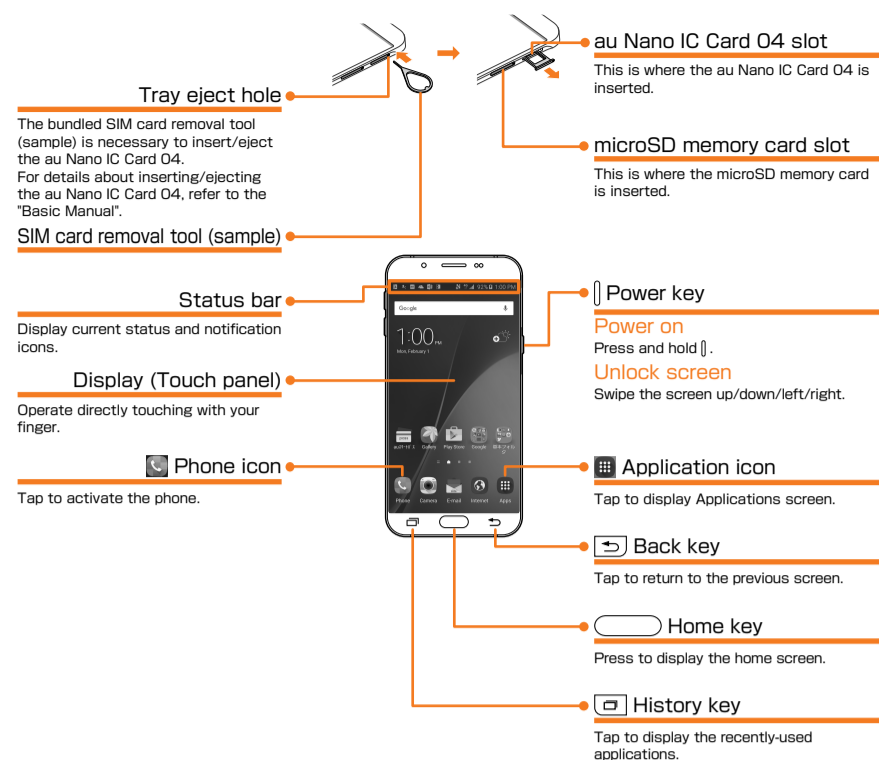
## Setting Guide

Introduction

Thank you for buying the Galaxy A8 (simply called the "product"). In this guide, settings and precautions for using the product are described. For basic operations, refer to "Basic Manual". Company names and product names referred to in this manual are trademarks or registered trademarks of respective companies.

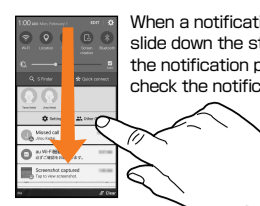
## Basic operation

For details, refer to the "Basic Manual" application installed on the product or "取扱説明書 (詳細版) (Full Instruction Manual)" (Japanese) available on the au homepage.



## Opening notification panel

When a notification icon is displayed, slide down the status bar to open the notification panel and then check the notification overview.



## Touch panel operations

**Tap**  
Lightly touch the screen and then immediately release your finger.



**Slide**  
If the displayed item does not fit within the screen, lightly touch and trace to the desired direction.



- Basic operation**: Describes the basic operations and names of parts.
- Initial settings**: Describes how to configure settings when turning on the power for the first time.
- Mail settings**: Make initial settings to use E-mail (@ezweb.ne.jp).
- Making a call**: Describes how to make a call.
- Receiving a call**: Describes how to receive a call.
- Importing/Exporting contacts**: Describes how to import and export contacts to this product using the au Nano IC Card O4 or the microSD memory card.
- Viewing/playing data**: Describes how to view/play images or video data.
- How to transfer data from the au Settings menu**: Describes how to restore and store data into this product from the previously used au phone.

Sold by: KDDI CORPORATION, OKINAWA CELLULAR TELEPHONE COMPANY  
Imported by: SAMSUNG ELECTRONICS JAPAN Co., Ltd.  
Manufactured by: Samsung Electronics Co., Ltd.  
December 2015, 1st Edition

- Pinch**: Touch the screen with two fingers and widen (pinch-out) or narrow (pinch-in) the fingers' distance.
- Long-touch**: Keep touching an item etc. with your finger.
- Flick (Swipe)**: Quickly move (flick) your finger up, down, right, or left.
- Drag**: Keep touching an item or icon, trace it to the desired direction.

- Selecting item**: To select displayed item or icon, tap the screen directly with your finger.
- Displaying menu**: There are a few methods to display a menu screen: by tapping [MORE] / by long-touching [ ] or by long-touching entry field or item.
- Switch setting**: When checkbox, radio button or ON/OFF switch appears at side of setting item, tap check box, radio button or ON/OFF switch to switch the ON/OFF of the setting.
 

Icon	Description
<input checked="" type="checkbox"/>	Setting is On.
<input type="checkbox"/>	Setting is Off.

- Character entry**: To enter characters, tap character entry field to display keyboard and then tap each key.
- Software keyboard**: Use "QWERTY Keyboard" or "3x4 Keyboard".
  - Tap [ ], and in the displayed menu, tap "3x4 Keyboard" ↔ "QWERTY Keyboard" to toggle between "3x4 Keyboard" and "QWERTY Keyboard". If the [ ] is not displayed, press and hold the keys that are located here in the screenshots and select [ ].
- Flick input**: In "3x4", entering candidates for flick input appears as shown when you touch a key. Flick to the direction of character to enter.
  - Flick left [X]
  - Flick up [Y]
  - Flick right [Z]
  - Flick down [9]

### Initial settings

The first time the product turns ON, the initial setting screen appears automatically. Follow the guidance to make the settings.

**STEP START**

- Slide "日本語 (Japanese)" → Select "English"
- Welcome screen

\* To change the language after it has been initially set, tap [基本フォルダ (Basic folder)] → [設定 (Settings)] → [言語と文字入力 (Language and input)] → [言語 (Language)] → [English].

### STEP 1: Wireless LAN (Wi-Fi®) function setting

Use your home wireless LAN (Wi-Fi®) or public wireless LAN to connect to the Internet.

- Tap Wi-Fi® network to connect
- Enter a password (security key) → [CONNECT] → [NEXT]

\* Tap [NEXT] to set later.  
\* If a precautions screen related to changing the smart network appears, confirm the content → [OK]

- If an access point device supports WPS Push button system, in Step 1, [MORE] → [WPS push button], and press WPS button on the access point device within 2 minutes to connect Wi-Fi® network.
- If an access point device supports WPS PIN code system, in Step 1, [MORE] → [WPS PIN entry], and enter PIN code on the access point device to connect Wi-Fi® network.

### STEP 2: Basic setting

- Tap <img alt="Screen 1: End User License Agreement" /> → [Learn more] → confirm the End User License Agreement and tap [AGREE] → [NEXT]
- Tap <img alt="Screen 2: Copy Google account" /> → Set whether to copy your Google account from other Android device

\* Tap [SKIP] to proceed to the next step.

### STEP 3: Google setting

Set up Google account to use Google applications such as "Gmail", "Google Play", and "Google+". Gmail address "(User name)@gmail.com" is automatically created by user name set in Google account.

- Tap <img alt="Screen 3: Add your account" /> → [Or create a new account]
- Tap <img alt="Screen 4: Create a Google Account" /> → Enter your "First name" and "Last name" → [NEXT]
- Tap <img alt="Screen 5: How you'll sign in" /> → Enter your user name → [NEXT]
- Tap <img alt="Screen 6: Create password" /> → Enter a password → reenter the password → [NEXT]
- Tap <img alt="Screen 7: Add phone number" /> → Enter a phone number in case you forget your password → [NEXT]
- Tap <img alt="Screen 8: Verify phone number" /> → Append the country code to the beginning of the phone number. Japan is "+81". After the country code, enter your phone number omitting the first digit. For example, if your Japan phone number is "090...", enter "+8190...".
- Tap <img alt="Screen 9: Privacy and Terms" /> → Confirm the content → [I AGREE]
- Tap <img alt="Screen 10: Your Google Account" /> → [NEXT]
- Tap <img alt="Screen 11: Set up payment info" /> → Select whether to set payment information → [NEXT]
- Tap <img alt="Screen 12: Protect your phone" /> → Set whether to safeguard the cell phone → [NEXT]
- Tap <img alt="Screen 13: Google services" /> → Confirm the content → [NEXT]

\* If you already have a Google account, tap the [Enter your email] field.  
\* If an entered user name is unavailable, an entry screen for prompting another user name appears.  
\* Tap [Remind me later] → [NEXT]  
\* To safeguard, [SET SCREEN LOCK NOW]  
\* To not safeguard, [SKIP] → [SKIP ANYWAY]

### STEP 4: Set up is complete

It is ready to use this product and set up completion screen appears.

- Tap <img alt="Screen 4: Set up is complete" /> → [SKIP] → [SKIP]
- Tap <img alt="Screen 5: Add fingerprint" /> → Add a finger print for unlocking the phone if necessary → [LATER]
- Tap <img alt="Screen 6: Easy mode" /> → Switch to Easy mode if necessary → [FINISH]

\* When "Easy mode" is enabled, frequently used applications such as Contact or Settings, etc., can be displayed with large icons on the home screen.

### STEP 5: au Easy Setting

When you have registered an au ID, you can use various au services including "au Simple Payment Service" which offers you a simple way to purchase applications from "au Smart Pass" and "Google Play". Create new au ID with this product or use your au ID.

- Tap <img alt="Screen 8: Terms of Use of au Services" /> → Check the terms of service of the initial settings → select "Agree" → [Next] → [Agree]
- Tap <img alt="Screen 9: Automatic Backup Setting" /> → Confirm the content, select "Turn Auto Backup on"/"Turn Auto Backup off" → [Next]
- Tap <img alt="Screen 10: au IDの設定・保存 (Set/save au ID)" /> → Check the applications → [次へ (Next)]
- Tap <img alt="Screen 11: Home Screen Setting" /> → Confirm the content, select "Activate"/"Skip activation" → [Next]
- Tap <img alt="Screen 12: Texting While Walking Alert" /> → To use Texting While Walking Alert App, select "Activate" → [Next]
- Tap <img alt="Screen 13: データを戻す (Restore data)" /> → If the "データを戻す (Restore data)" screen appears, select the check box of the type of data you want to restore → [次へ (Next)]
- Tap <img alt="Screen 14: Initial Setting Completed" /> → To update this product, select "Update" → [Next]

\* If you select [Agree], Lookout for au completes the presets.  
\* Select [Turn Auto Backup on] if you want to use the "データお預かり (Data Storage)" application to automatically backup your pictures and address book to the au server.  
\* If there are apps which are to be restored, the App restoration screen will appear. If the screen is displayed, follow the onscreen instructions to operate.

# Mail settings

## Initial Setup of E-mail

To use E-mail (@ezweb.ne.jp), subscription to LTE NET is required. If you did not subscribe it when you purchased the product, contact an au shop or Customer Service Center.

● For model change from au phone, you can continue to use the E-mail address that is used on the former model by making initial settings.

- On the home screen, [E-mail]
- Confirm the contents → [接続する (Connect)]
- Initial settings are complete, E-mail address appears → [閉じる (Close)]

● If the "About use of customer information" screen appears, confirm the content and tap [Accept].

● If welcome screen appears, confirm the content and tap [Close].

## Changing your E-mail address

Although E-mail address is automatically decided by performing Initial settings, the E-mail address can be changed.

- On the home screen, [E-mail]
- [E-mail] → [E-mail settings]
- [Other settings]
- Confirm the contents → [接続する (Connect)]
- [Eメールアドレスの変更へ (To Change E-mail address)]
- Enter the security code → [送信 (Send)]
- Confirm the contents → [承諾する (Accept)]
- Enter E-mail address → [送信 (Send)]
- [OK]
- [閉じる (Close)]

● The security code is the four-digit number which you wrote down when you contracted your au cell phone. Verify it in the "Application form copy".

## Checking E-mail address

- On the E-mail settings screen, [E-mail information]
- E-mail address appears

## Backing up E-mail

E-mails can be backed up to phone memory. And backup data can be restored to E-mail application.

- On the E-mail settings screen, [Backup/Restore]
- [Mail Backup] → [OK]
- Select character code → [OK]
- Mark mail types to back up → [OK]

● If a microSD memory card is inserted into this product, then data will be backed up onto the microSD memory card.

## Making a call

### Calling by direct input

- On the home screen, [Phone]
- Enter a phone number → [☎]

● To dial using call log, in Step 2, tap "LOG" to select a log, then tap [☎].

● To return to the keypad screen from the "LOG" tab, tap [☎].

**Calling overseas (au International Call Service)**  
You can make international calls without any special procedure from the product. To call overseas, in the phone number entry screen, enter an access code, country code, area code\*, and the phone number of the other party, then tap [☎].

\* If the area code starts with "0", dial it without including the "0". (There are some exceptions such as fixed-line phones in some countries or regions including Italy and Moscow.)

### Calling from the contacts

- On the home screen, [基本フォルダ (Basic folder)] → [Contacts]
- Tap a contact to call
- Tap a phone number

## Receiving a call

### Calling

- Drag/slide [☎] out of the circle
- Calling starts
- To reject a call, in Step 1, drag/slide [☎] out of circle. When a call rejected, the caller hears the guidance.

## Using Sync Call

You can talk on the phone without changing screens. If you receive a phone call while using an app, a pop-up screen appears.

- To answer the call, [☎]
- Your call will begin
- To end the call, [☎]

● To talk on speaker phone while looking at the display, in step 1 tap [☎].

### Setting up Sync Call

- During a call, [☎]
- Configure the various settings

\* You can still the settings screen by tapping [基本フォルダ (Basic folder)] → [Settings] → [Applications] → [Phone] → [au service] → [Sync Call settings] on the home screen.

## Importing/Exporting contacts

You can transfer contacts data in the previously used au Nano IC Card O4 or microSD memory card.

- On the home screen, [基本フォルダ (Basic folder)] → [Contacts]
- [MORE] → [Settings] → [Import/Export contacts]
- [IMPORT] → [Device storage]/[SD card]/[SIM card]
- [Device]/Synchronized account
- Select contacts data to import → [DONE]

● To export contacts, in Step 3, tap [EXPORT] → [Device storage]/[SD card]/[SIM card].

● You can export up to 50 contacts to the au Nano IC Card O4.

\* To import from au Nano IC Card O4, select contacts data to import and then tap [DONE].

## Viewing/playing data

View/play images or videos saved in the phone memory or the microSD memory card.

- On the home screen, [Gallery]
- Select an album
- Select data to view

\* When a screen other than album list is displayed, go to Step 3.

\* To play video, tap [▶].

## How to transfer data from the au Settings menu

You can restore/backup data from your previous au phone to this product using a microSD memory card or au Smart Pass servers.

- You need to setup an au ID to restore or save data using au Smart Pass servers.
- If you use a microSD memory card to restore data, save the data from your previous au phone to a microSD memory card.

### How to restore data from the au Settings menu

- On the home screen, [基本フォルダ (Basic folder)] → [Settings]
- [au Settings menu]
- [Data Transfer]
- [データを戻す (Restore data)]
- Select how to restore data
- If you selected [SDカードから戻す (Restore data from an SD card)], select your previous au phone model
- Place checkmarks on the data to be restored, [戻す (Restore)] → [完了 (Done)]

\* You need to setup an au ID to restore data using [auスマートパスから戻す (Restore data from au Smart Pass)] (data backed up on au Smart Pass servers).

\* This screen is not displayed if you selected [auスマートパスから戻す (Restore data from au Smart Pass)] on the restore data method screen.

\* This screen is displayed if you selected [auスマートパスから戻す (Restore data from au Smart Pass)] (Restore smartphone data).

### How to save data from the au Settings menu

- On the home screen, [基本フォルダ (Basic folder)] → [Settings]
- [au Settings menu]
- [Data Transfer]
- [データを保存する (Save data)]
- Select save data to
- Place checkmarks on the data to be saved, [保存する (Save)] → [完了 (Done)]
- Place checkmarks on the data to be saved, [預ける (Save)] → confirm the details, follow the instructions on the screen → [完了 (Done)]

If you want to use the "データお預かり (Data Storage)" application to automatically save your pictures and address book (contacts) to the au Smart Pass server, you can set it up by following the procedure below.

● On the home screen, select [基本フォルダ (Basic folder)] → [Settings] → [au Settings menu] → [Backup Setting] → [定期的に自動で預ける (Periodic automatic backup)]

### How to back up data to a PC using Galaxy Smart Switch

There are two versions of Smart Switch: Smart Switch for PC/Mac and Smart Switch for mobile. By using the Smart Switch for PC, you can back up data to and restore data from a PC.

For details, refer to the Smart Switch homepage below.  
<http://www.samsung.com/smartswitch/>

You can only forward content that you own or have the rights to. Samsung Electronics Co., Ltd. takes no responsibility for any infringements on the Copyright Law.