

Setting Guide

Introduction

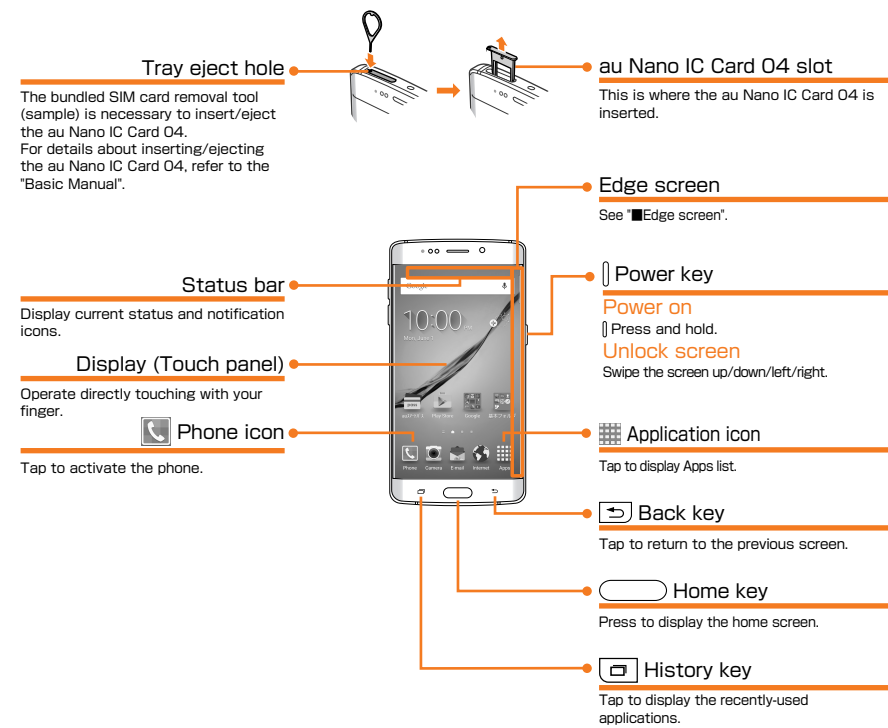
Thank you for buying the GALAXY S6 edge (simply called the "product"). In this guide, settings and precautions for using the product are described. For basic operations, refer to "Basic Manual". For detailed descriptions on various functions, refer to the "Instruction Manual" application installed on the product. Company names and product names referred to in this manual are trademarks or registered trademarks of respective companies.

- **Basic operation**
Describes the basic operations and names of parts.
- **Initial settings**
Describes how to configure settings when turning on the power for the first time.
- **Mail settings**
Make initial settings to use E-mail (@ezweb.ne.jp).
- **Making a call**
Describes how to make a call.
- **Receiving a call**
Describes how to receive a call.
- **Importing/Exporting contacts**
Describes how to import and export contacts to this product using the au Nano IC Card O4.
- **Viewing/playing data**
Describes how to view/play images or video data.
- **Backing up data**
Describes how to back up data that is on this product.
- **Saving battery power**
Describes the settings for saving the battery power.

Sold by: KDDI CORPORATION, OKINAWA CELLULAR TELEPHONE COMPANY
Imported by: SAMSUNG ELECTRONICS JAPAN Co., Ltd.
Manufactured by: Samsung Electronics Co., Ltd.
April 2015, 1st Edition

Basic operation

For details, refer to the "Instruction Manual" application installed on the product or "取扱説明書 詳細版 (Full Instruction Manual)" (Japanese) available on the au homepage.



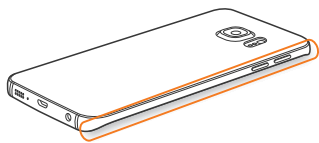
Opening notification panel

When a notification icon is displayed, slide down the status bar to open the notification panel and then check the notification overview.



Edge screen

You can check whether you have received a call or notifications when the product is face down by the lights on the edge screen. By registering important contacts, you can also identify that you have received a notification from that contact by color.



Touch panel operations

Tap
Lightly touch the screen and then immediately release your finger.



Slide
If the displayed item does not fit within the screen, lightly touch and trace to the desired direction.



Pinch
Touch the screen with two fingers and widen (pinch-out) or narrow (pinch-in) the fingers' distance.



Long-touch
Keep touching an item etc. with your finger.



Flick (Swipe)
Quickly move (flick) your finger up, down, right, or left.

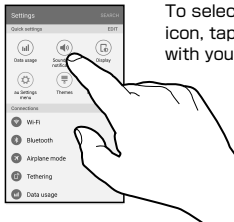


Drag
Keep touching an item or icon, trace it to the desired direction.



Selecting item

To select displayed item or icon, tap the screen directly with your finger.



Displaying menu

There are a few methods to display a menu screen; by tapping [MORE] / by long-touching [≡] or by long-touching entry field or item.

Switch setting

When checkbox, radio button or ON/OFF switch appears at side of setting item, tap checkbox, radio button or ON/OFF switch to switch the ON/OFF of the setting.

Icon	Description
<input checked="" type="checkbox"/>	Setting is On.
<input type="checkbox"/>	Setting is Off.

Character entry

To enter characters, tap character entry field to display keyboard and then tap each key.

Software keyboard

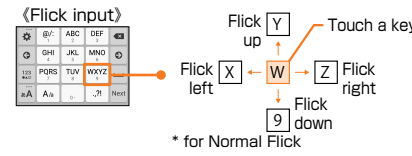
Use "QWERTY Keyboard" or "3x4 Keyboard".



Tap [⌘] (if not displayed, long touch key in the same position), and in the displayed menu, tap "3x4 Keyboard ⇄ QWERTY Keyboard" to toggle between "3x4 Keyboard" and "QWERTY Keyboard".

Flick input

In "3x4 Keyboard", entering candidates for flick input appears as shown when you touch a key. Flick to the direction of character to enter.



STEP 1: Wireless LAN (Wi-Fi®) function setting

Use your home wireless LAN (Wi-Fi®) or public wireless LAN to connect to the Internet.

* Password (security key) is set on access point. Check in advance.



Tap Wi-Fi® network to connect

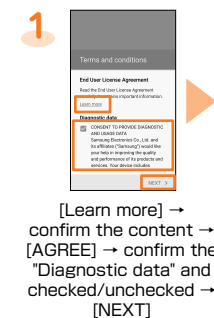
- * Tap [NEXT] to set later.
- * If a precautions screen related to changing the smart network appears, confirm the content → [OK]

- If an access point device supports WPS Push button system, in Step 1, [MORE] → [WPS push button], and press WPS button within 2 minutes to connect Wi-Fi® network.
- If an access point device supports WPS PIN code system, in Step 1, [MORE] → [WPS PIN entry], and enter PIN code on the access point device to connect Wi-Fi® network.

● If an access point device supports WPS Push button system, in Step 1, [MORE] → [WPS push button], and press WPS button within 2 minutes to connect Wi-Fi® network.

● If an access point device supports WPS PIN code system, in Step 1, [MORE] → [WPS PIN entry], and enter PIN code on the access point device to connect Wi-Fi® network.

STEP 2 : Basic setting



[Learn more] → confirm the content → [AGREE] → confirm the "Diagnostic data" and checked/unchecked → [NEXT]

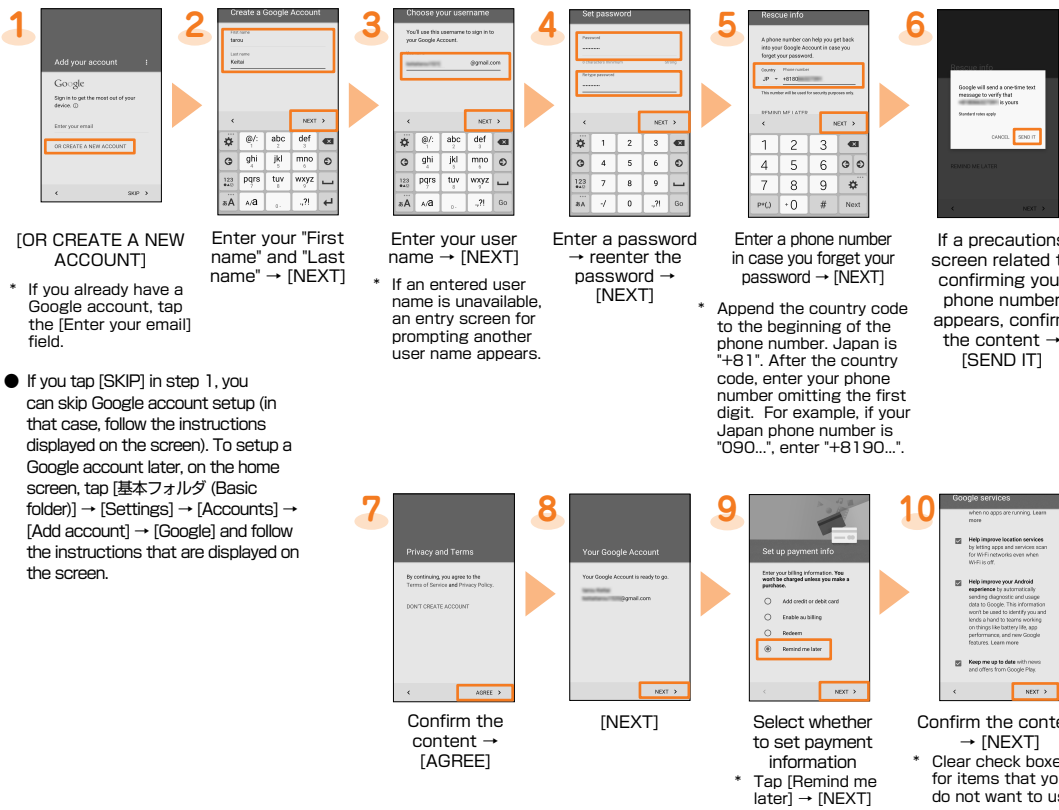


Set whether to copy your Google account from an Android device

- * Tap [SKIP] to proceed to the next step.

STEP 3: Google setting

Set up Google account to use Google applications such as "Gmail", "Google Play", and "Google+", Gmail address "(User name)@gmail.com" is automatically created by user name set in Google account.



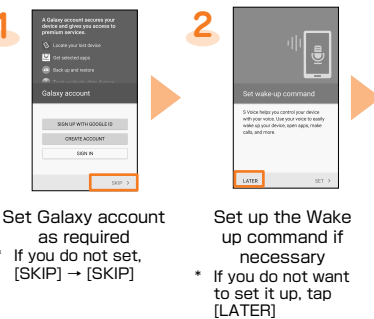
[OR CREATE A NEW ACCOUNT]

- * If you already have a Google account, tap the [Enter your email] field.

- If you tap [SKIP] in step 1, you can skip Google account setup (in that case, follow the instructions displayed on the screen). To setup a Google account later, on the home screen, tap [基本フォルダ (Basic folder)] → [Settings] → [Accounts] → [Add account] → [Google] and follow the instructions that are displayed on the screen.

STEP 4: Set up is complete

It is ready to use this product and set up completion screen appears.

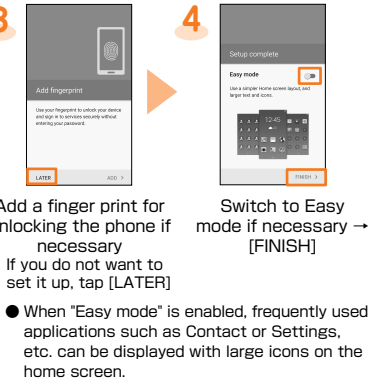


Set Galaxy account as required

- * If you do not set, [SKIP] → [SKIP]

Set up the Wake up command if necessary

- * If you do not want to set it up, tap [LATER]



Add a finger print for unlocking the phone if necessary

- * If you do not want to set it up, tap [LATER]

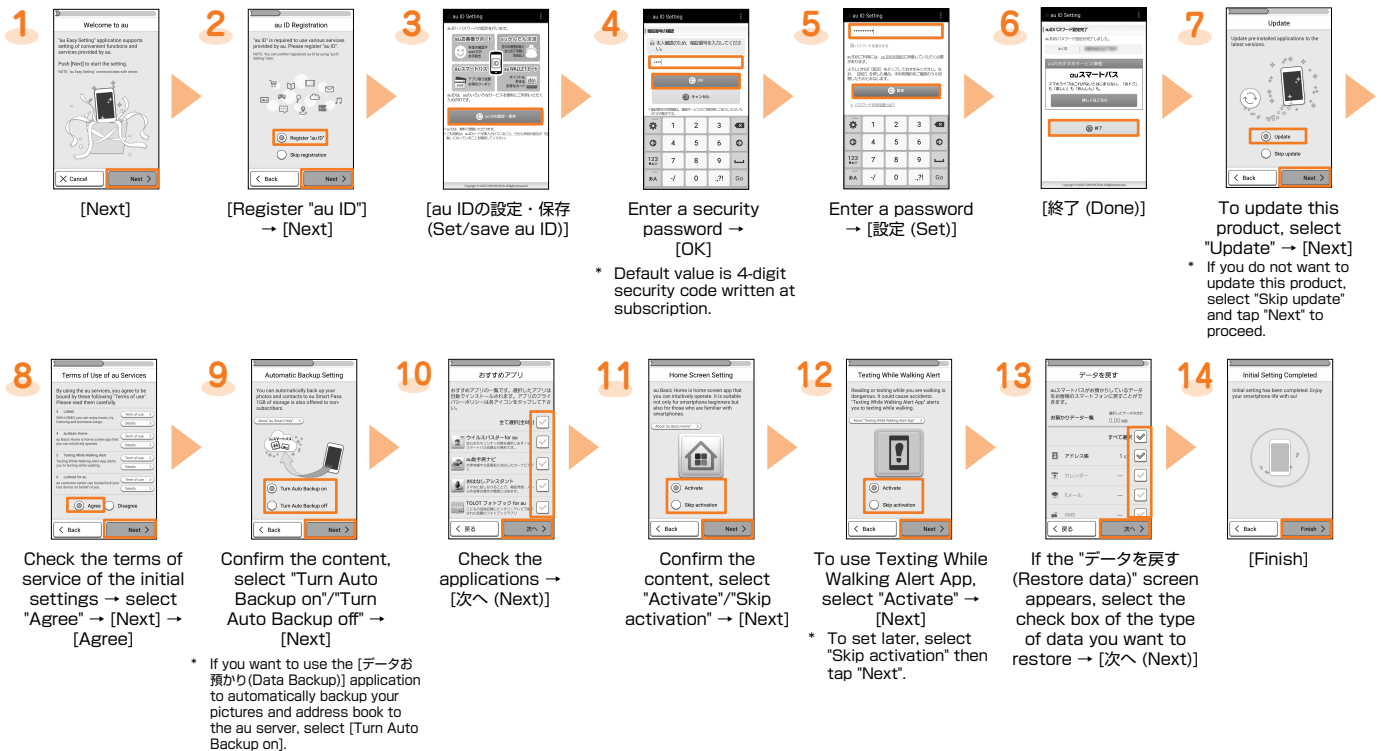
- When "Easy mode" is enabled, frequently used applications such as Contact or Settings, etc. can be displayed with large icons on the home screen.

STEP 5: au Easy Setting

You can set au ID, au Wi-Fi SPOT, etc. all at once.

When you have created an au ID, you can use various au services including "au Simple Payment Service" which offers you a simple way to purchase applications from "au Smart Pass" and "Google Play". Create new au ID with this product or use your au ID.

- au ID which is already used by another user cannot be set.
- You can still setup au services after completing initial settings by tapping [基本フォルダ (Basic folder)] → [Settings] → [au Settings menu] → [au Easy Setting] on the home screen.



Check the terms of service of the initial settings → select "Agree" → [Next] → [Agree]

Confirm the content, select "Turn Auto Backup on"/"Turn Auto Backup off" → [Next]

- * If you want to use the (データお預かり (Data Backup)) application to automatically backup your pictures and address book to the au server, select [Turn Auto Backup on].

Check the applications → [次へ (Next)]

Confirm the content, select "Activate"/"Skip activation" → [Next]

To use Texting While Walking Alert App, select "Activate" → [Next]

- * To set later, select "Skip activation" then tap "Next".

If the "データを戻す (Restore data)" screen appears, select the check box of the type of data you want to restore → [次へ (Next)]


[Finish]

Mail settings


Initial Setup of E-mail

To use E-mail (@ezweb.ne.jp), subscription to LTE NET is required. If you did not subscribe it when you purchased the product, contact an au shop or Customer Service Center.


● For model change from au phone, you can continue to use the E-mail address that is used on the former model by making initial settings.



1 On the home screen, [E-mail]



2 Confirm the contents → [接続する (Connect)]



3 Initial settings are complete, E-mail address appears → [閉じる (Close)]

● If welcome screen appears, confirm the content and tap 'Close'.

Changing your E-mail address

Although E-mail address is automatically decided by performing Initial settings, the E-mail address can be changed.



1 On the home screen, [E-mail]



2 Long-touch [E-mail settings]



3 [Other settings]




4 Confirm the contents → [接続する (Connect)]




5 [Eメールアドレスの変更へ (To Change E-mail address)]



6 Enter the security code → [送信 (Send)]



7 Confirm the contents → [承諾する (Accept)]



8 Enter E-mail address → [送信 (Send)]



9 [OK]



10 [閉じる (Close)]

Checking E-mail address



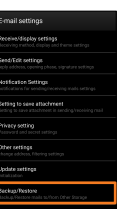
1 In the E-mail settings screen, [E-mail information]



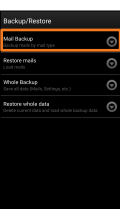
2 E-mail address appears

Backing up E-mail


E-mails can be backed up to phone memory. And backup data can be restored to E-mail application.




1 In the E-mail settings screen, [Backup/Restore]



2 [Mail Backup] → [OK]
* To backup all e-mails including e-mail settings, [Whole Backup].




3 Select character code → [OK]



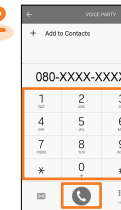
4 Mark mail types to back up → [OK]

Making a call

Calling by direct input



1 On the home screen, [Phone]



2 Enter a phone number → []

● To dial using call log, in Step 2, tap "LOG" to select a log, then tap [].

● To return to the keypad screen from the "LOG" tab, tap [].


Calling overseas (au International Call Service)

You can make international calls without any special procedure from the product.

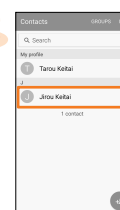
To call overseas, in the phone number entry screen, enter an access code, country code, area code*, and the phone number of the other party, then tap [].

* If the area code starts with "0", dial it without including the "0". (There are some exceptions such as fixed-line phones in some countries or regions including Italy and Moscow).

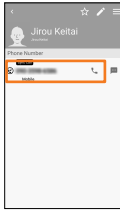
Calling from a contact



1 On the home screen, [基本フォルダ (Basic folder)] → [Contacts]



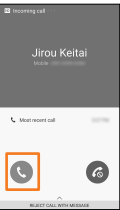
2 Tap a party to call



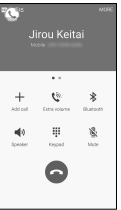
3 Tap a phone number

Receiving a call

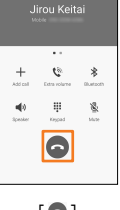
Calling



1 Drag/slide [] out of the circle



2 Calling starts




3 []


● To reject a call, in Step 1, drag/slide [] out of circle. When a call rejected, the caller hears the guidance.

Using Sync Call


You can talk on the phone without changing screens. If you receive a phone call while using an app, a pop-up screen appears.



1 To answer the call, []




2 Your call will begin



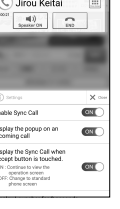
3 To end the call, []

● To talk on speaker phone while looking at the display, in step 1 tap [].

Setting up Sync Call



1 During a call, []




2 Configure the various settings

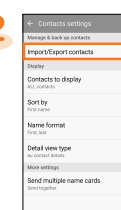
* You can still the settings screen by tapping [基本フォルダ (Basic folder)] → [Settings] → [Applications] → [Phone] → [Sync Call settings] on the home screen.

Importing/Exporting contacts

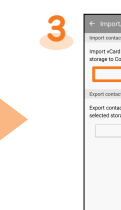
You can transfer contacts data in the previously used au Nano IC Card O4.



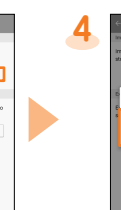
1 On the home screen, [基本フォルダ (Basic folder)] → [Contacts]



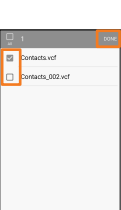
2 [MORE] → [Settings] → [Import/Export contacts]



3 [IMPORT] → [Device storage]/[SIM card]



4 [Device]/Synchronized account



5 Select contacts data to import → [DONE]

● To export contacts, in Step 3, tap [EXPORT] → [Device storage]/[SIM card].


● You can export up to 50 contacts to the au Nano IC Card O4.

* Contacts data is imported. If there are multiple contacts data saved, go to Step 5.


* To import from au Nano IC Card O4, select contacts data to import and then tap "Done".

Viewing/playing data

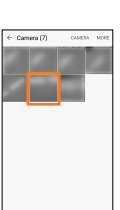
View/play images or videos saved in the phone memory.



1 On the home screen, [Apps] → [Gallery]




2 Select an album
* When a screen other than album list is displayed, go to Step 3.



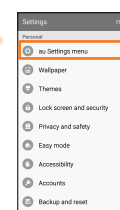
3 Select data to view
* To play video, tap []

Backing up data

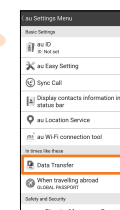
How to back up data from the au Settings Menu




1 On the home screen, [基本フォルダ (Basic Folder)] → [Settings]




2 [au Settings menu]



3 [Data Transfer]



4 [データを保存する (Save data)]



5 Select the save destination

* If the Terms of Use and Privacy Policy screen appears, tap [同意する (Agree)] on each screen.

* If you back up data to the au server (select [auスマートパス]に預ける (Back up to au Smart Pass)), you need to setup au ID.


* If you use [SDカードに保存する (Save to SD card)], you need a commercial memory card reader/writer.

To protect important data, we recommend that you setup automatic data backup. If you periodically back up your pictures and address book automatically to the au server, you can set it up with the following procedure.

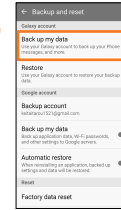
On the home screen, select [基本フォルダ (Basic folder)] → [Settings] → [au Settings menu] → [Backup Setting] → [定期的に自動で預ける (Periodic automatic backup)]

How to back up data to a server using your Galaxy account

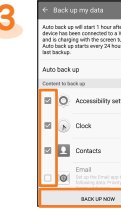
This procedure is performed in [Backup and reset] in the [Settings] menu. You need a Galaxy account. You also need to connect to a Wi-Fi* network with the wireless LAN (Wi-Fi) function.



1 On the home screen, [基本フォルダ (Basic folder)] → [Settings]



2 [Backup and reset] → [Back up my data]



3 Select the check boxes of the data that you want to back up → [BACK UP NOW]

* If the Galaxy account screen appears, follow the instructions on the screen.

How to back up data to a PC using Galaxy Smart Switch

There are two versions of Galaxy Smart Switch: a PC version (Galaxy Smart Switch) and a mobile version (Galaxy Smart Switch Mobile). By using the PC version (Smart Switch), you can back up data to and restore data from a PC.

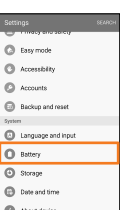
There are a number of precautions that must be noted when using it. For details, refer to the Galaxy Smart Switch homepage below.
<http://www.samsung.com/smartswitch/>

You can only forward content that you own or have the rights to. Samsung Electronics Co., Ltd. takes no responsibility for any infringements on the Copyright Law.


Saving battery power

Setting saving power mode

Set to switch to saving power mode automatically when the battery level becomes low.



1 On the home screen, [基本フォルダ (Basic folder)] → [Settings] → [Battery]



2 [Power saving mode] / [Ultra power saving mode] → Tap → [] to turn to " " → Set each function

- When "Ultra power saving mode" is set, color of screen is turned to grayscale and you can only use the applications which you select as necessary applications.
- To return from the Ultra power saving mode screen to the normal state, tap [MORE] → [Turn off Ultra power saving mode] on the Ultra power saving mode screen.