

Setting Guide

Thank you for buying the GALAXY Tab S (simply called the "product"). In this guide, settings and precautions for using the product are described.

For basic operations, refer to "Basic Manual". To start "Basic Manual" application installed on the product, in the Application screen, tap [Basic Manual]. For detailed descriptions on various functions, refer to the "取扱説明書 (Instruction Manual)" application installed on the product*.

* "取扱説明書 (Instruction Manual)" is displayed only when "Language" is "日本語 (Japanese)". To change language to use, on the home screen, [基本機能 (Basic function)] → [Settings] → [General] → [Language and input] → [Language] → Select language you want to use.

Company names and product names referred to in this manual are trademarks or registered trademarks of respective companies.

Sold by: KDDI CORPORATION, OKINAWA CELLULAR TELEPHONE COMPANY
 Imported by: SAMSUNG ELECTRONICS JAPAN Co., Ltd.
 Manufactured by: Samsung Electronics Co., Ltd.
 November 2014, 1st Edition

- Basic operation**
Describes the basic operations and names of parts.
- Initial settings**
For the first time activation, set up Google account etc. according to the initial setting screen.
- au Easy Setting**
Configure setting such as au ID and Wi-Fi SPOT.
- Mail settings**
Make initial settings to use E-mail (@ezweb.ne.jp). Your E-mail address is determined automatically after the initial settings but the E-mail address can be changed later.
- Importing/Exporting contacts**
Import contacts data from au phone you have ever used.
- Backing up to microSD memory card**
Back up data such as images shot by Camera to microSD memory card.
- Saving battery power**
Describes the settings for saving the battery power.

Basic operation

For basic operations, refer to "Basic Manual". For details, refer to the "取扱説明書 (Instruction Manual)" application installed on the product* or "取扱説明書 詳細版 (Full Instruction Manual)" (Japanese) available on the au homepage.
 * "取扱説明書 (Instruction Manual)" is displayed only when "Language" is "日本語 (Japanese)". To change language to use, on the home screen, [基本機能 (Basic function)] → [Settings] → [General] → [Language and input] → [Language] → Select language you want to use.

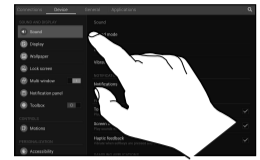


Opening notification panel



When a notification icon is displayed, slide down the status bar to open the notification panel and then check the notification overview.

Selecting item



To select displayed item or icon, tap the screen directly with your finger.

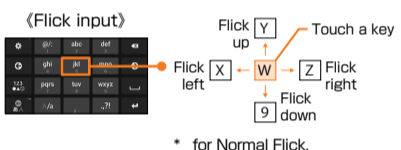
Character entry

To enter characters, tap character entry field to display keyboard and then tap each key.
Software keyboard
 Use "QWERTY Keyboard" or "3x4 Keyboard".



Tap "3x4" (if not displayed, long touch key in the same position), and in the displayed menu, tap "3x4 Keyboard ↔ QWERTY Keyboard" to toggle between "3x4 Keyboard" and "QWERTY Keyboard".

Flick input
 In "3x4 Keyboard", entering candidates for flick input appears as shown when you touch a key. Flick to the direction of character to enter.



Initial settings

The first time the product turns ON, the initial setting screen appears automatically. Follow the guidance to make the settings.
 * Depending on the settings, setting contents and displays may differ.

STEP START



STEP 1 : Wireless LAN (Wi-Fi®) function setting

Use your home wireless LAN (Wi-Fi®) or public wireless LAN to connect to the Internet.
 * Password (security key) is set on access point. Check in advance.



- If an access point device supports WPS Push button system, in Step 1, [WPS] → [WPS push button], and press WPS button within 2 minutes to connect Wi-Fi® network.
- If an access point device supports WPS PIN code system, in Step 1, [WPS] → [WPS PIN entry], and enter PIN code on the access point device to connect Wi-Fi® network.

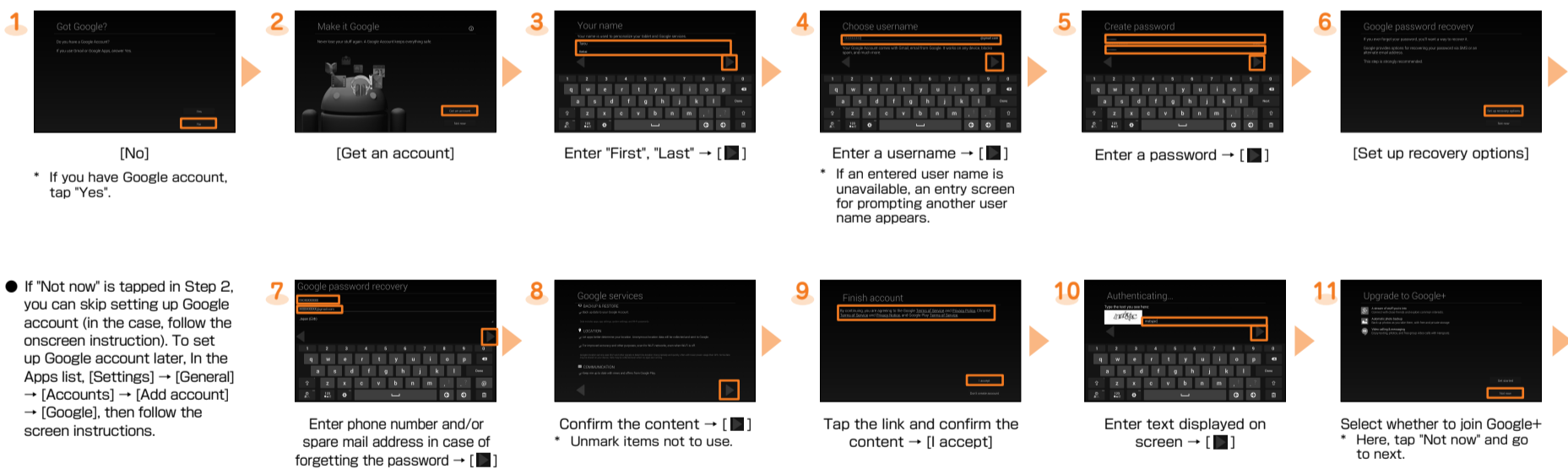
STEP 2 : Basic setting



Confirm the content → "I understand and agree to the terms and conditions above." → Select "Yes"/"No thanks" → [Next]

STEP 3 : Google setting

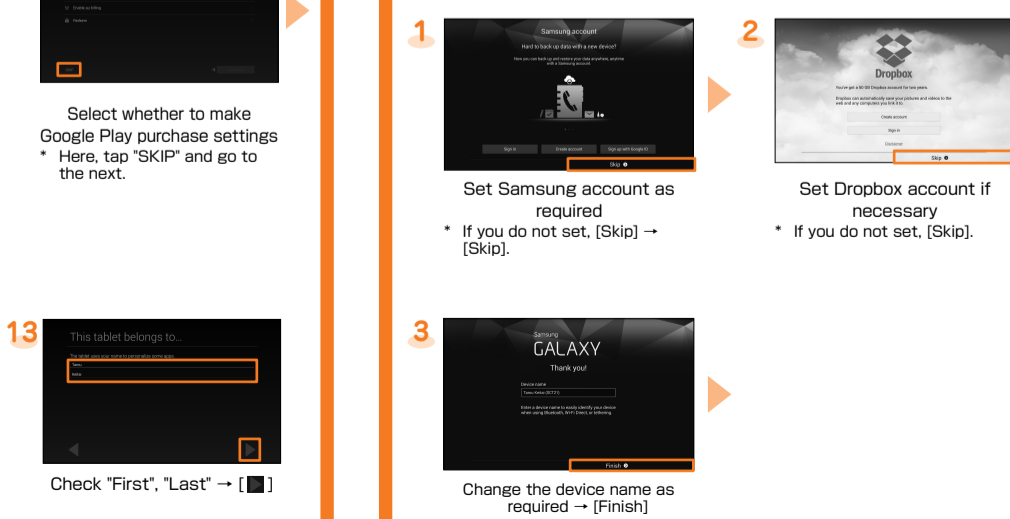
Set up Google account to use Google applications such as "Gmail", "Google Play", and "Google+". Gmail address "(User name)@gmail.com" is automatically created by user name set in Google account.



- If "Not now" is tapped in Step 2, you can skip setting up Google account (in the case, follow the onscreen instruction). To set up Google account later, in the Apps list, [Settings] → [General] → [Accounts] → [Add account] → [Google], then follow the screen instructions.

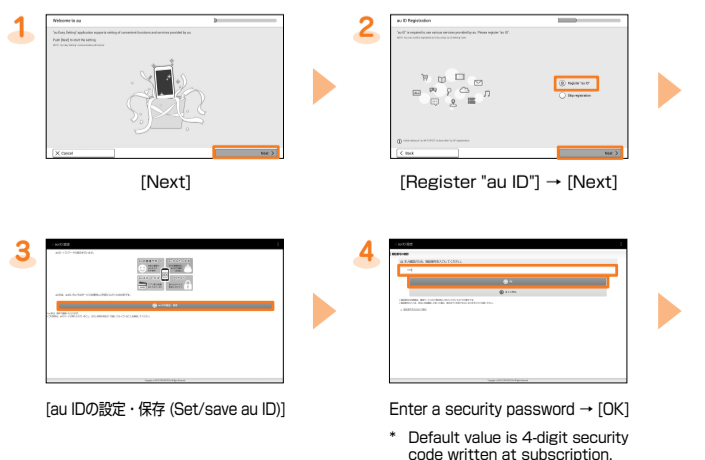
STEP 4 : Set up is complete

It is ready to use this product and set up completion screen appears.



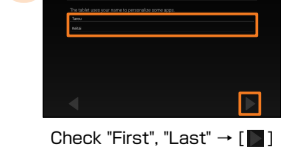
STEP 5 : au Easy Setting

You can set au ID, au Wi-Fi SPOT, etc. all at once. When you have created an au ID, you can use various au services including "au Simple Payment Service" which offers you a simple way to purchase applications from "au Smart Pass" and "Google Play". Create new au ID with this product or use your au ID.
 ● au ID which is already used by another user cannot be set.
 ● You can still setup au services after completing initial settings by tapping [au Easy Setting] on the home screen.



* Default value is 4-digit security code written at subscription.

STEP 12



Select whether to make Google Play purchase settings
 * Here, tap "SKIP" and go to the next.

STEP 13



Check "First", "Last" → []

5 Enter a password → [設定 (Set)]

6 Completion screen appears → [au ID設定メニューへ (To au ID setting menu)]

7 [終了 (Done)]

8 To update this product, select "Update" → [Next]
* If you do not want to update this product, select "Skip update" and tap "Next" to proceed.

9 Check the terms of service of the initial settings → Select "Agree" → [Next]

10 Check the details and [Agree]
* This completes Lookout for au presetting.
* If you are restoring data after changing phones, etc. the "Restoration of backups" screen appears. Follow the instructions on the screen.
* "Restoration of backups" screen may display on vertical display.

11 Check the details and [Next]
* If you are changing phones and app download history exists, the "アプリの復元 (App restore)" screen appears. Follow the instructions on the screen.

12 Check the applications → [次へ (Next)] → [Finish]

Mail settings

Initial Setup of E-mail

To use E-mail (@ezweb.ne.jp), subscription to LTE NET is required. If you did not subscribe it when you purchased the product, contact an au shop or Customer Service Center.

- For model change from au phone, you can continue to use the E-mail address that is used on the former model by making initial settings.

1 On the home screen, [E-mail]

2 Confirm the contents → [接続する (Connect)]

3 Initial settings are complete, E-mail address appears → [閉じる (Close)]

- If welcome screen appears, confirm the content and tap "Close".

Changing your E-mail address

Although E-mail address is automatically decided by performing Initial settings, the E-mail address can be changed.

1 On the home screen, [E-mail]

2 [E-mail settings]

3 [Other settings]

4 Confirm the contents → [接続する (Connect)]

5 [Eメールアドレスの変更へ (To Change E-mail address)]

6 Enter the security code → [送信 (Send)]

7 Confirm the contents → [承諾する (Accept)]

8 Enter E-mail address → [送信 (Send)]

9 [OK]

10 [閉じる (Close)]

1 In the E-mail settings screen, [E-mail information]

2 E-mail address appears

Backing up E-mail

E-mails can be backed up to phone memory or microSD memory card. And backup data can be restored to E-mail application.

1 In the E-mail settings screen, [Backup/Restore]

2 [Mail Backup] → [OK]
* To backup all e-mails including e-mail settings, [Whole Backup].

3 Select character code → [OK]

4 Select mail
Mark mail types to back up → [OK]

- When microSD memory card is inserted to this product, data is backed up to microSD memory card.

Importing/Exporting contacts

You can transfer contacts data in the previously used au phone to the product via microSD memory card or au Micro IC Card (LTE).

- * Save contacts data to microSD memory card or au Micro IC Card (LTE) from the previously used au phone in advance.

1 In the Apps list, [Contacts]

2 [Settings] → [Import/Export]

3 [Import from USB storage]/ [Import from SD card]/ [Import from SIM card]

4 [Device]/Synchronized account

5 Select contacts data to import → [OK]

- * Contacts data is imported. If there are multiple contacts data saved, go to Step 5.
- * To import from au Micro IC Card (LTE), select contacts data to import and then tap "Done".

- To export contacts, in Step 3, tap "Export to USB storage"/"Export to SD card"/"Export to SIM card". It is recommended to export important data on a regular basis for its protection.

Backing up to microSD memory card

Using My Files to back up phone data to microSD memory card.
* "Device storage" indicates phone and "SD card" indicates microSD memory card.

Example: Backing up data shot by camera

1 On the home screen, [My Files]

2 [Device storage] → [DCIM] → [Camera]

3 [Select] → Tap checkbox of data to back up

4 [OK]

5 [SD card] → Select a folder to save in → [Paste here]
* [Create folder] → Tap "Create folder" to create a new folder.

- To bring back backed up data to phone, copy data in the microSD memory card to the original location.
- To restore E-mails, in the E-mail settings screen, [Backup/Restore] → [Restore mails] → Select a mail type to restore → [OK] → Mark backed up data to restore → [OK] → [Add]/[Overwrite] → [OK].

Data saving locations in device

Data type	Data location
Data shot by camera	Device storage > DCIM/Camera
E-mail (@ezweb.ne.jp) Received mail	Device storage > private/au/email/BU/RE
Sent mail	Device storage > private/au/email/BU/SE
Unsent mail	Device storage > private/au/email/BU/DR
Attached data of received mail is saved	Device storage > private/au/email/MyFolder
Inserted image of received mail (including D-pictogram) is saved	Device storage > private/au/email/MyFolder
Data such as images saved by Browser	Device storage > Download

Saving battery power

Setting saving power mode

Set to switch to saving power mode automatically when the battery level becomes low.

1 On the home screen, [基本機能 (Basic functions)] → [Settings] → [General] → [Power Saving]

2 [Power saving mode] / [Ultra power saving mode] → Tap [ON] to turn to [ON] → Set each function

- When "Ultra power saving mode" is set, color of screen is turned to grayscale and you can only use the applications which you select as necessary applications.