



Basic Manual

Qua phone QX

Contents

Getting Ready

Basic Operation

Safety precautions

Appendix

Preface

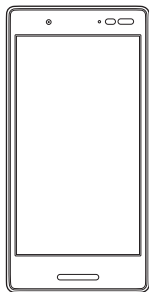
Thank you for buying the "Qua phone QX" (simply called the "product" or "main unit" from here on).

Before using the product, be sure to read the "Basic Manual" (this manual) to ensure correct use.

After you have finished reading the manuals, be sure to keep them accessible.

List of Packaged Items

Before you start using the product, make sure that you have all the following packaged with the product.



Main unit



**IC Card Tray
Ejecting Tool (sample)**

- 取扱説明書 (Instruction Manual) (Japanese)
- 設定ガイド (Setting Guide) (Japanese)

The following items are not included in the package.

- | | |
|-----------------|----------------------|
| ・AC adapter | ・microSD memory card |
| ・microUSB cable | ・Earphones |



- Purchase a specified charger (sold separately).
- The battery is built into the product.
- Illustrations of cell phones in this manual are only for reference. They may look different from the actual product.

Operating Instructions

■ "Setting Guide" "Basic Manual" (This Manual)

Handles only basic operations for main features.

■ "Basic Manual App"

You can download the Basic Manual app on the product to confirm operational procedures.

Home screen → [au Supports] → [Basic Manual]

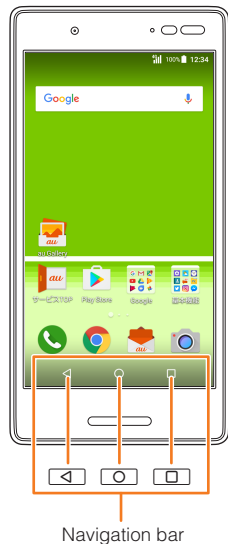
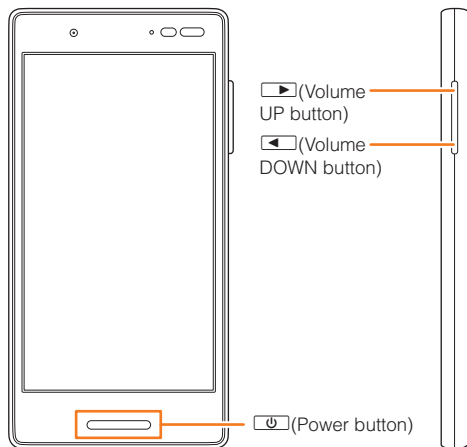


- When you activate for the first time, follow the onscreen instructions to download and install app.

Regarding Notations Used in This Document

Note on Button Illustrations

In this manual, buttons are represented by simplified as shown below.



■ Description of Operations for Selecting Item/Icon/Button etc.

Notations used for operation procedures in this manual are as follows.

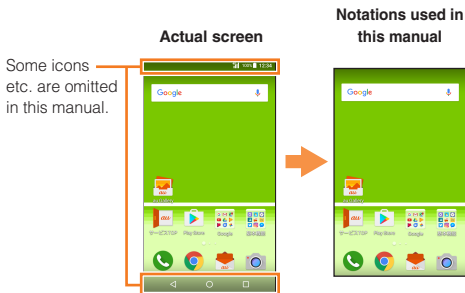
Description	Explanation
Home screen → [📞] → "DIALPAD" tab → [1] [4] [1] → [📞]	Tap "📞 (Phone)" at the bottom of the Home. And after tapping "DIALPAD" tab, tap "1 00", "4" and "1 00", then tap "📞 (Call)" at the end.
In sleep mode, [🔌] (Power button)	In sleep mode, press [🔌] (Power button).

- Tapping is to select a button or icon displayed on the screen by lightly tapping it with your finger.

■ Notes on Illustrations/Screenshots

In this manual, screenshots and operations for the product with au Nano IC Card 04 attached are described.

Screen illustrations shown in this manual may look different from the actual screens. Note that part of the screen etc. may be omitted.



- ◎ In this manual, the operations with vertically oriented screens are provided as examples. With horizontally oriented screens, descriptions for menu item/icon/on-screen button may be different.
- ◎ Menu items, layers and icons described in this manual may be different according to functions being used and conditions.
- ◎ In this manual, screenshots for body color "White" are provided as examples.
- ◎ In this manual, "au Nano IC Card 04" is abbreviated as "au IC card".
- ◎ In this manual, "microSD™ memory card (commercially available)", "microSDHC™ memory card (commercially available)" and "microSDXC™ memory card" are abbreviated as "microSD memory card (commercially available)" or "microSD".
- ◎ All of the indicated amounts exclude tax unless otherwise specified.
- ◎ Company names and product names referred to in this manual are trademarks or registered trademarks of respective companies. The TM, ® marks may be omitted in this manual.

Contents

Preface	ii
List of Packaged Items	ii
Operating Instructions	1
Regarding Notations Used in This Document	2
Contents	5
Getting Ready	6
Names and Functions of Parts	6
au IC Card	9
Internal Shared Storage	12
Using microSD Memory Card	12
Charging	14
Turning the Power On/Off	17
Switching to English Display	17
Start Screen	18
Basic Operations	19
Using the Home Screen	19
Activating the Apps	24
Switching the Home App	24
Using Standard Home	24
Monitoring the Product's Status	25
Checking Your Phone Number	26
Setting Silent Mode	26
Setting Airplane Mode	27
Making a Call	27

Receiving a Call	28
Setting Step-up Ring Volume	28
Setting Missed Call Notification	28
Displaying Menu	28
Setting Home Screen	28
Saving Battery Consumption	29

Safety Precautions

30

When Using the Product	30
Safety Precautions (Observe Strictly)	32
Handling Precautions	42
Notes on Waterproof/Dustproof/Shockproof Properties	49
Notes on Using Bluetooth®/Wireless LAN (Wi-Fi®) Function	55
Security Code/PIN Code	57
Notes on Data Communication Charges	59
Notes on Applications	59
Setting the App Permissions	60
Cell Phone Etiquette	60

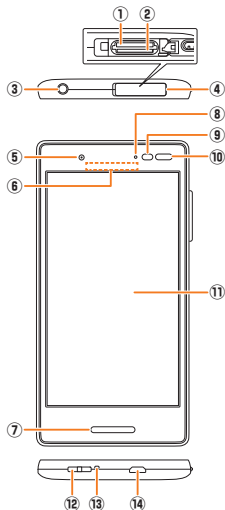
Appendix

62

Updating Software	62
Troubleshooting	63
After-Sales Service	65
SIM Unlock	69
Related Accessories	70
Main Specifications	71
Specific Absorption Rate (SAR) of Cell Phones	72
Export Administration Regulations	74
Intellectual Property Rights	74

Getting Ready

Names and Functions of Parts



① **microSD memory card slot**

② **au IC card slot**

③ **Earphone microphone terminal**

Used for connecting earphones (commercially available) or other accessories.

④ **Card slot cover**

⑤ **In camera (lens)**

⑥ **Earpiece (receiver)**

Hear the other party's voice on call, play sound of answer memo, etc. with SMART SONIC RECEIVER (▶ P. 8).

⑦  **Power button**

Power ON/OFF, activate/deactivate sleep mode, etc.

⑧ **Incoming (charging) light**

Lights red during charging.

Flashes according to settings for new call.

⑨ **Proximity sensor / Light sensor**

The proximity sensor ensures that the touch panel does not accidentally respond.

Light sensor detects the ambient light level to adjust the display brightness.

⑩ **Infrared port**

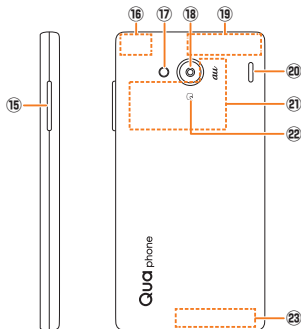
Send/receive data by infrared communication.

⑪ **Display (touch panel)**

⑫ **Strap eyelet**


⑬ **Mouthpiece (microphone)**

Relays your voice to the other party. Also use to record audio. Take care not to cover the microphone with your fingers during a call or recording a video.



■ How to open the card slot cover



Insert a fingernail a small way into one of the corners marked  and pull open the cover.
Be careful not to insert your fingernail all the way. Doing so may damage the rubber seal under the cover.

⑭ External connection terminal

Connecting a Common AC Adapter 05 (sold separately), microUSB cable 01 (sold separately), etc.

⑮ ◀ ▶ Volume down / up key

Adjusts sound volume. Press and hold ◀ (Volume down key) for at least one second to set "Silent mode" (▶ P.26).

⑯ Built-in GPS / Bluetooth® / Wi-Fi® antenna*

⑰ Photo / Flash light

⑱ Out camera (lens)

⑲ Built-in sub antenna*

⑳ Speaker

Ringtones, alarms, etc. sound from here.

㉑ FeliCa antenna*

㉒ mark

Hold it over a reader/writer when using Osaifu-Keitai®.

㉓ Built-in main antenna*

* The antenna is built into the product. Covering the antenna with your hand might affect communication quality.



memo

- ◎ The back cover of the product is not removable.

Removing the back cover with force may cause damage or malfunction.

- ◎ The battery is built into the product and it is not removable.

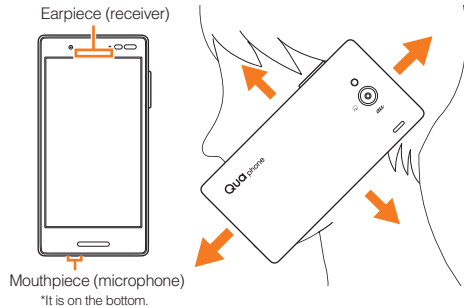
To force stop and reboot the product, refer to "Forcing the Product to Shut Down and Restart" (▶ P.17).

About SMART SONIC RECEIVER

The product features a SMART SONIC RECEIVER, which relays sound by vibrating the display. The receiver does not have any holes, but can be used in a usual manner.

Touching to Your Ear

Hold the receiver area up to your ear as shown so that your ear is covered, blocking surrounding sound and increasing audibility. Move the product up and down, left and right to suit your hearing and surroundings.

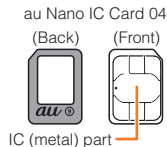


memo

- ◎ Take care not to cover the mouthpiece (microphone) of the product with your fingers during a call.
- ◎ When commercially available earphones are connected, voice sound can be switched to the one via earphones not using SMART SONIC RECEIVER.
- ◎ Do not cover the display with stickers or films. Doing so may affect audibility.
- ◎ Audibility depends on the individual.
- ◎ Audibility also depends on surroundings.

au IC Card

Your phone number etc. is recorded on the au IC card. The product is compatible with au Nano IC Card 04.



- ◎ Note that mishandling the au IC card might cause malfunction or damage, be careful not to do the followings.
 - Do not touch the IC (metal) part of the au IC card.
 - Check the correct insert direction.
 - Do not forcefully attach/remove the card.
- ◎ If the au IC card is not attached correctly or the au IC card has any abnormality, the error message is displayed.
- ◎ Do not lose the removed au IC card.
- ◎ Do not insert your au IC card with a conversion adapter attached. Doing so may cause malfunction.

When au IC Card is Not Inserted

If the au IC card is not inserted, the following operations are unavailable. And "[?]" appears on the status bar.

- Making/Receiving a call
- Sending/Receiving SMS
- Initial settings and sending/receiving emails of E-mail (@ezweb.ne.jp)
- PIN code setting
- Checking your phone number and email address of the product

Besides the items above, necessary functions such as your phone number are also unavailable.

* Emergency calls such as 110 (Police), 119 (Fire and Ambulance) and 118 (Regional Coast Guard Headquarters) are unavailable. However, unless the signal strength is "out of range" in GSM/UMTS/LTE roaming area when you call, emergency calls are available. (Since emergency call numbers vary depending on countries, they may be unavailable.)

Attaching/Removing au IC Card

■ Cautions on Attaching/Removing

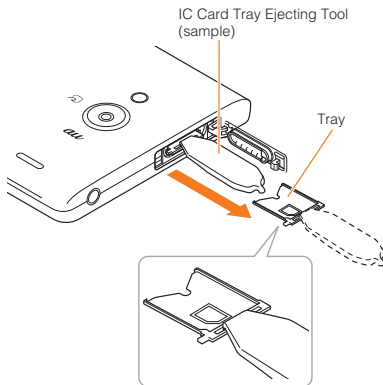
- Attach/Remove the au IC card after turning off the product. Also, be sure to remove the microUSB plug of the specified AC adapter from the product.
- When attaching/removing the au IC card, be sure to unmount the microSD memory card first.

■ Attaching au IC Card

- When installing your au IC card, be sure to use the supplied IC Card Tray Ejecting Tool (sample).

1 Turn the power off and open the card slot cover

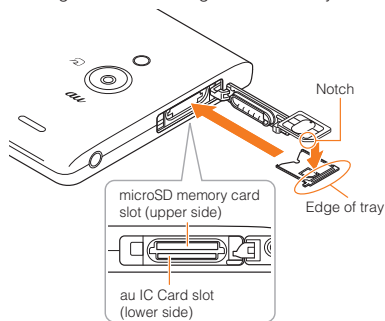
2 Hook the IC Card Tray Ejecting Tool (sample) on the edge of the tray and pull it out



3 Put the au IC card on the tray with the position of the card's notch adjusted, then insert the tray straight into the au IC card slot (lower side)

After the tray is inserted, hook the IC Card Tray Ejecting Tool (sample) on the edge of the tray and press it all the way.

- Insert the card with the IC (metal) part facing up.
- To avoid the au IC card from getting onto the tray, do not insert it with excessive force. Do not apply excessive force and insert it all the way straight into the slot. If the tray does not fit into the slot, do not press it with force. Pull the tray out and insert it again with the front edge raised. The au IC card cannot be recognized if the card gets onto the tray.



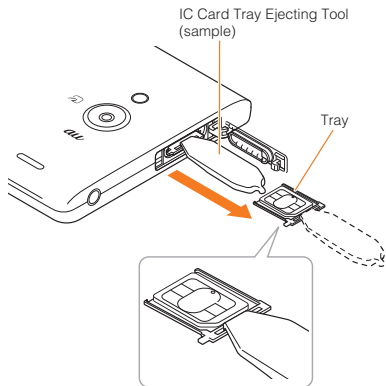
4 Close the card slot cover

■ Removing au IC Card

- When removing your au IC card, be sure to use the supplied IC Card Tray Ejecting Tool (sample).

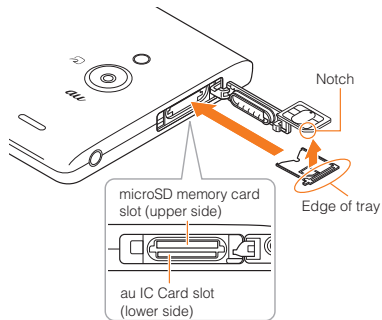
1 Turn the power off and open the card slot cover

2 Hook the IC Card Tray Ejecting Tool (sample) on the edge of the tray and pull it out



3 Remove the au IC card, then insert the tray straight into the au IC card slot (lower side)

After the tray is inserted, hook the IC Card Tray Ejecting Tool (sample) on the edge of the tray and press it all the way.



4 Close the card slot cover

Internal Shared Storage

The product can save data to the main unit memory and microSD memory card.

The main unit memory	Save data that apps and each app use and media files such as images captured by screenshot.
microSD memory card	Save media files, etc.



© Data may be saved to the main unit memory depending on some apps even if a menu or message is displayed.

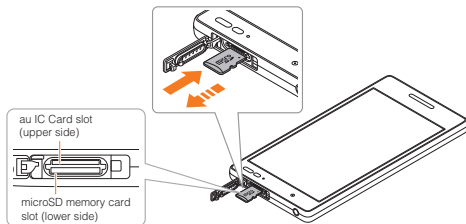
Using microSD Memory Card

Attaching/Removing microSD Memory Card

■ Attaching microSD Memory Card

- 1 Open the card slot cover of the product
- 2 Confirm the direction of the microSD memory card and slowly insert it into the slot until it clicks

When inserting the card into the product, confirm the card is locked with snaps. Be aware that the card may fly out if you release your finger before the card is locked. Be careful about it.



- 3 Close the card slot cover



- ◎ The microSD memory card has a back and front side/top and bottom orientation. Trying to insert the card forcefully may cause confinement or damage.

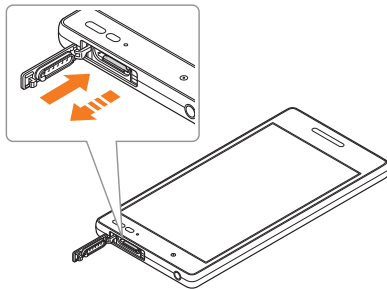
Removing microSD Memory Card

- 1 Home screen → [基本機能 (Basic Function)] → [Settings] → [Storage] → Tap "▲"

SD card is dismantled.

- 2 Open the card slot cover of the product
- 3 Slowly push the microSD memory card toward the slot until it clicks

Pull out the microSD memory card with fingers on when you hear "click". Keep your fingers on while the microSD card comes out of the slot. Be aware that the card may fly out if you release your finger while pressing hard.



- 4 **Slowly pull the microSD memory card**
Slowly pull out the card as straight as possible. Depending on the microSD memory card, it is difficult to pull out from the slot due to the failure of unlocking. In that case, remove the card by pulling lightly with your fingers.
- 5 **Close the card slot cover**


 memo

- ⦿ Do not touch the terminal part of microSD memory card.
- ⦿ Do not pull out the microSD memory card forcefully.
Doing so might cause a fault or loss of data.
- ⦿ After using the product for a long time, the removed microSD memory card may become warm. This is not a malfunction.
- ⦿ When you remove the microSD memory card, be sure to dismount the card properly.

Charging

The internal battery is not fully charged at the time of purchase. Charge the battery before using the product. When the red light turns into green, the charging will be completed.

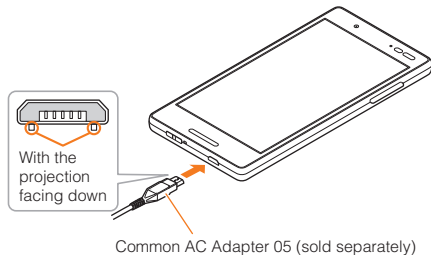
 memo

- ⦿ The product may become warm while charging or during other operations, this is not abnormal.
- ⦿ Charging the product while using the camera function, the charging time may take longer than usual.
- ⦿ Doing various operations with the specified charger (sold separately) connected, the battery life may get short due to the short time charging/discharging.
- ⦿ When temperature of environment or the product is extremely high or low, charging may be stopped. Charge the battery at room temperature as much as possible.
- ⦿ Make sure the connection is correct if the charging light of the product blinks in red. If the charging light continues to blink, immediately stop charging, and contact an au shop or Repair and Delivery Service Center.
- ⦿ Right after "100%  " is displayed while charging, the charging light may not turn to green, but the light will turn to green soon and the charging will be completed.
- ⦿ Keep a metal accessory or conductive materials (metal pieces, pencil lead, etc.) from coming in contact with the connection terminal and prevent them from getting inside.

Charging with AC Adapter

How to charge the product using Common AC Adapter 05 (sold separately) is described here. For information on the specified AC adapter (sold separately), see "Related Accessories" (► P. 70).

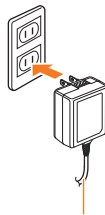
- 1 Check the orientation of the microUSB plug of Common AC Adapter 05 (sold separately) and insert it straight into the external connection terminal**



- 2 Connect the power plug of Common AC Adapter 05 (sold separately) to an outlet (100V - 240V AC)**

Make sure that the charging light turns into red. When the battery power turns on, "100" appears on the status bar.

When charging is complete, the charging light turns into green.



Common AC Adapter 05 (sold separately)

- 3 When charging is complete, pull out the microUSB plug of Common AC Adapter 05 (sold separately) straight from the external connection terminal**
- 4 Connect the power plug of Common AC Adapter 05 (sold separately) to an outlet**



- ◎ Note that applying unnecessary force with an external device connected to the external connection terminal may cause damage.
- ◎ When the battery is charged in the case that the batteries run out, charging light may not turn to green soon, but charging is started.

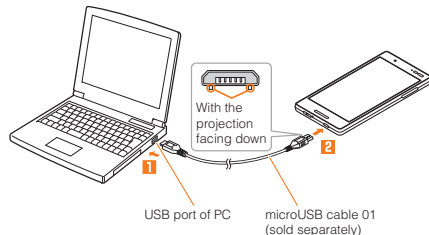
Charging with PC

How to charge the product connecting to USB port that supports PC charging with microUSB cable 01 (sold separately) is described here.

- 1 Connect the microUSB cable 01 (sold separately) to the USB port of PC when the PC is completely activated.**
- 2 Check the orientation of the microUSB plug of microUSB cable 01 (sold separately) and insert it straight into the external connection terminal**

Make sure that the charging light turns into red. When charging is complete, the charging light turns into green.

- When a screen such as new hardware search appears on PC, select "Cancel".



- 3 When charging is complete, remove the microUSB cable 01 (sold separately) from the external connection terminal and PC.**



- ◎ When the battery is charged in the case that the batteries run out, charging light may not turn to green soon, but charging is started.
- ◎ The charging time may take longer than charging with a specified AC adapter. And the charging time also varies depending on your PC.

Turning the Power On/Off

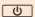
Turning the Power On

1 Press and hold (Power button) until the charging light turns on

The start screen appears (▶ P. 18).

- For the first time you turn on the product, the initial setting, "auかんたん設定 (au Easy Setting)" activates. You need to set as required. For details, refer to "Initial Settings" in the packaged "Setting Guide".

memo

- When logos are being displayed on the screen, do not touch the screen because the initial setting of the touch panel activates. Doing so may prevent the touch panel from working properly.
- Press  (Power button) when the screen is on or turn the screen off with no operation for a certain period, the product enters sleep mode.

Turning the Power Off

1 Press and hold (Power button) for at least 1 second

2 [Power off] → [OK]

Forcing the Product to Shut Down and Restart

You can force the product to power off and reboot when the screen does not respond, or the power cannot be turned off.

1 Press and hold (Power button) and (Volume up key) for at least 11 seconds

memo

- If you turn off the product forcibly and restart, an unsaved data will be lost. Do not perform except when the product does not respond.

Switching to English Display

Switch the language displayed on the screen to English.

1 Home screen → [基本機能 (Basic Function)] → [設定 (Settings)] → [言語と入力 (Languages & input)] → [言語 (Languages)]

2 [English]

The message "起動中のアプリ、メール送受信、ダウンロードなどが終了される場合があります。" (Apps, mail transmission/reception, and downloads may be terminated.) appears, confirm the content and then tap [OK].

Start Screen

The start screen is displayed when you turn the product on or cancel the sleep mode.

Switching to the Home Screen from the Start Screen

You can switch to the home screen with the following operations when the start screen appears.

1 Swipe/flick

The home screen appears (▶ P. 19). Or, the previous screen which the product turns to sleep mode appears.

- Swipe/Flick [📞] / [📷] displayed at the bottom of the screen to activate Phone (▶ P.27)/Camera.

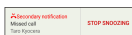


《Start Screen》

① Clock display

② Notifications

- Double-tap a notification to activate notified app.
- If there are unconfirmed missed calls, you are notified by snooze (secondary notification). For details, refer to "Setting Missed Call Notification" (▶ P.28).



《Secondary Notification Screen》

Sleep Mode

Press [⏻] (Power button) while the backlight is turned on or perform no operation for a certain period, the screen goes off temporarily and the product enters sleep mode. Doing the following operation, cancel the sleep mode.

1 In sleep mode, press [⏻] (Power button)



memo

- To change the time to enter sleep mode, home screen → [基本機能 (Basic Function)] → [Settings] → [Display] → [Sleep], and select the time.
- When you press [⏻] (Power button) to display the screen in sleep mode, do not touch the screen. Doing so may prevent the touch panel from working properly.

Auto Assist

It notifies you of unconfirmed missed calls with vibration when you pick up the product.

And it controls the functions automatically according to your actions or lifestyles. For example, the Silent mode is set when it detects you getting on a train and the snooze is canceled when it detects you walking.

To use Auto assist, home screen → [基本機能 (Basic Function)] → [Settings] → [Auto assist], and set each item.

Basic Operations

Using the Home Screen

When you purchase the product, home app on the home screen is set to "au Basic Home" with frequently used apps with a Smartphone. Also, home app can be switched (▶ P.24).

The home screen consists of multiple screens. Slide/flick right or left to switch the screen.

- ① **Status bar**
- ② **Shortcuts/Folders**
- ③ **Indicator**
- ④ **Quick launch area**



《Home Screen
(au Basic Home)》



memo

- In this manual, the operations on the home screen of "au Basic Home" is provided as examples.

Main apps/folders on the home screen

Frequently used apps are displayed on the home screen. Other apps are organized in each folder such as "Google", "基本機能 (Basic Function)", "au Supports", "au Services", "Others Apps".

Select an app/folder to use by sliding/flicking the home screen right to left.

Icon name	
au Gallery	This application makes it convenient to use your au smartphone or tablet cooperated with other au devices. Photos and movies are synchronized with your au devices, so, this application makes your camera-life more enjoyable and meaningful.
サービスTOP (Service TOP)	This App provides daily news, coupon and special information for au users.
Play Store	Search for and install apps.
Phone (📞)	Enter a phone number and make a call from the call history.
Chrome (🌐)	View Web pages.
E-mail (✉️)	This is a service to send/receive mails using (@ezweb.ne.jp) address.

Icon name			
Camera (📷) Capture still images/movies.			
My au You can check your daily usage, points and monthly billing of au services with this application. You can also change your rate plan, apply for optional services and so on.			
au Disaster Measures This is an application in which you can use Disaster Message Board, Emergency Rapid Mail (Earthquake Early Warning and Disaster and Evacuation Information and Tsunami Warning and Emergency Warning) and Disaster Voice Messaging Service.			
Facebook Facebook is a free app by registration of real names to keep up with your friends - to see what they're up to, share updates, photos, and videos, and chat and have group conversations.			
auスマートパス (au Smart Pass) au Smart Pass Premium and au Smart Pass is one of the most wonderful apps which provides you an enjoyable, safe and practical Smartphone Life .			
Google <table border="1"> <tr> <td> Google Search within the product and Web pages by keyword. </td></tr> <tr> <td> Gmail This is a mail service provided by Google. </td></tr> <tr> <td> Maps Display your current location, and search for other locations and routes. </td></tr> </table>	Google Search within the product and Web pages by keyword.	Gmail This is a mail service provided by Google.	Maps Display your current location, and search for other locations and routes.
Google Search within the product and Web pages by keyword.			
Gmail This is a mail service provided by Google.			
Maps Display your current location, and search for other locations and routes.			

Icon name			
YouTube Play movies and search for movies by keyword input.			
Drive View/edit files saved to Google Drive.			
Play Music Play music and play lists.			
Play Movies & TV Rent movies at Google Play and watch saved movies.			
Duo This is Google instant messaging service.			
Photos Display/edit captured images and movies, and back up to Google+™.			
Voice Search Use Google Voice Search.			
Calendar Use Calendar.			
Keep This is a memo service provided by Google.			
基本機能 (Basic Function) <table border="1"> <tr> <td> Settings Set and manage various functions from the setting menu. </td></tr> <tr> <td> Weather Check weather information for the current location and area that you set. </td></tr> <tr> <td> Clock Use the alarm, timer, stopwatch and world clock functions. </td></tr> </table>	Settings Set and manage various functions from the setting menu.	Weather Check weather information for the current location and area that you set.	Clock Use the alarm, timer, stopwatch and world clock functions.
Settings Set and manage various functions from the setting menu.			
Weather Check weather information for the current location and area that you set.			
Clock Use the alarm, timer, stopwatch and world clock functions.			

Icon name	
	<p>Contacts</p> <p>Register contact information in contacts.</p>
	<p>SMS</p> <p>This is an app to exchange messages by au phone number.</p>
	<p>File Commander</p> <p>View, copy/move data.</p>
	<p>Twitter</p> <p>Post and view messages easily.</p>
	<p>Instagram</p> <p>Instagram is an app that lets you easily connect with your family, friends and people around the world through sharing photos and videos.</p>
	<p>Messenger</p> <p>This is an app without charge to exchange messages with your friends and acquaintances in real time and have a group chat/video chat.</p>
	<p>Calculator</p> <p>Use Calculator.</p>
	<p>Sound Recorder</p> <p>Use Sound Recorder.</p>
	<p>Osaifu-Keitai</p> <p>Use this app for shopping by electronic money and getting coupon information, etc.</p>

Icon name	
	<p>au Supports</p>
	<p>遠隔操作サポート (Remote Support Service)</p> <p>Call for technical supports on the phone operations by sharing the screen that you are watching with au operators.</p>
	<p>Lookout for au</p> <p>"Lookout for au" enables you to locate and remotely lock your smartphone/tablet through the au Customer Center when your device is stolen or lost.</p>
	<p>デジラアプリ (Dejira app)</p> <p>Dejira App allows you to</p> <ul style="list-style-type: none"> - check your remaining data amount - use the Data Charge service - use the Data Gift service - request your family to give you data amount
	<p>au Wi-Fi Connect</p> <p>It is an application to conveniently assist connection to au's publicly available wireless LAN service, "au Wi-Fi SPOT" and au's indoor Wi-Fi router, "Wi-Fi HOME SPOT".</p>
	<p>Data Storage</p> <p>This is an app to back up various data such as saved photos, contacts in the Smartphone to au server and save to microSD memory card.</p> <p>Use it as a tool for data transfer when you get a new au cell phone by changing the model.</p>
	<p>World Data Flat</p> <p>An easy and simple initial setting of new Flat-rate Data Service that can be used in countries around the world.</p>

Icon name
<p>あんしんフィルター for au (Anshin filter for au)</p> <p>This is an application which limits the access to the inappropriate applications and web pages so that your child can use a smartphone safely.</p>
<p>Basic Manual</p> <p>Use "Basic Manual".</p>
<p>au ID Setting</p> <p>Use various services provided by au after setting it.</p>
<p>故障紛失サポート (Repair and Delivery Service)</p> <p>This is an app to totally support trouble diagnosis when Smartphone has trouble, phone counseling to Repair and Delivery Service Center, replacement request on the Internet, data transfer.</p>
<p>au Services</p>
<p>ニュースパス (News Pass)</p> <p>News curation app.</p>
<p>Video Pass</p> <p>Enjoy popular movies, dramas and animations.</p>
<p>ブックパス (Book Pass)</p> <p>Enjoy many e-books such as magazines, comics and novels.</p>
<p>Disney pass</p> <p>This is a monthly subscription service for Disney fans! You can enjoy unlimited access to "Kisekae", wallpapers, video, music and many others including contents and benefits exclusively provided to Disney pass subscribers. You can also choose the bundling service of au-limited smartphone case and 60-day-free trial of digital contents.</p>

Icon name
<p>Uta Pass</p> <p>Uta Pass has 2 functions.</p> <ul style="list-style-type: none"> - Online Streaming service: all-you-can-listen more than 3000 playlists with Latest J-POP hits and POP of EURO and US. - Standalone Music Player: It can read the files on your device and also you can buy a song from "Music Store".
<p>Player(LISMO)</p> <p>Music Player makes Uta Pass APP more powerful and useful.</p>
<p>au WALLET</p> <p>"au WALLET App" is useful for the user of au. When you use it, you can do the following things.</p> <ul style="list-style-type: none"> · au WALLET points you have · information of "au Easy Payment" <p>In addition, when you use au WALLET Prepaid card and Credit card, you can do the following things.</p> <ul style="list-style-type: none"> · benefits of au WALLET cards [au WALLET Prepaid card] · charging the card · checking its inquiry [au WALLET Credit card] · checking billing statements · purchase history, and so on
<p>au WALLET Market</p> <p>au Wallet Market is a new service that is designed to help you fulfill your living needs and well-being through purchasing "little fine products" via e-commerce and au shops. You can check your purchased items, and also change your orders at your nearest au shops or e-commerce (LUXA).</p>
<p>au Market</p> <p>You can install Android-based applications offered with au Smart Pass service.</p>

Icon name	
	<p>Wowma! for au</p> <p>This is an official application of "Wowma! for au" where you can enjoy online shopping for Smartphone Accessories, Foodies, Apparels, and More.</p>
	<p>ナビウォーク (Navi walk)*</p> <p>Helps you navigate route combining public transportation and walk.</p>
	<p>auシェアリンク (au Share Link)</p> <p>This is an app to use Smartphone and tablet conveniently. You can display the notification such as incoming call to Smartphone or E-mail (@ezweb.ne.jp) on the tablet, and operate the Smartphone on the screen of the tablet.</p>
	<p>スポーツブル (Sports Bull)</p> <p>This is an app to watch hot sports contents quickly.</p>
	<p>RealTimes for au</p> <p>Enjoy automatically created digest video from photos & videos stored in your phone for each event. Share videos with your family and/or friends by just selecting their phone numbers from your contact list.</p>
	<p>ゲームギフト (Gamegift)*</p> <p>In "Gamegift", we provide free items of most popular games, feature article, pre-registration information and try playing to the game user.</p>
Others Apps	
	<p>OfficeSuite</p> <p>View files such as Word, Excel.</p>
	<p>Eco Mode</p> <p>Set to minimize the battery consumption.</p>

Icon name	
	<p>Downloads</p> <p>Manage downloaded data.</p>
	<p>Flashlight</p> <p>Use the Flashlight.</p>
	<p>SATCH</p> <p>This App can read QR codes and barcodes. And you can playback CG, Animations etc, when you hold up to the object. Please enjoy along the guidance of campaign pages that are displayed in this app.</p>
	<p>Infrared</p> <p>Send/receive data using the infrared communication.</p>
	<p>Daily Step</p> <p>Sense the transportation with the accelerometer and record the number of steps, consumed calories and travel time of each transportation and set the target number of steps.</p>
	<p>HealthPlanet</p> <p>Use the pedometer data such as the number of steps, consumed calories, collaborating with HealthPlanet Web service.</p>
	<p>使い方ガイド (Usage Guide)</p> <p>Check the detailed usage of the product.</p>
	<p>Gallery</p> <p>Display a list of internal storage/images to play in microSD memory card/movies. And manage data as an album.</p>

* Downloading/updating is required to use.



- Using the function from each app may incur communication charges depending on the function.
- Icon names are subject to change without notice.

Activating the Apps

Some functions activated by tapping app icons may incur communication charges.

1 Home screen → Tap an app/folder to activate

- If you tap a folder, tap an app to activate from the app list in the folder.

Switching the Home App

Switch the home apps of the product.

1 Home screen → [基本機能 (Basic Function)] → [Settings] → [Change home]

The Change home screen appears.

2	au Basic Home	▶ P.19 "Using the Home Screen"
	Standard Home	▶ P.24 "Using Standard Home"

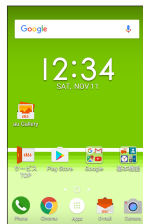
3 [OK]

Using Standard Home

This is a home app displayed in standard layout for apps and widgets. It is recommended for those who are familiar with the Smartphone operations.

1 Change home screen → [Standard Home] → [OK]

The Standard Home screen appears. Slide/flick right or left to switch the screen.



- To restore the home screen from the Standard Home to the home screen (au Basic Home), from the Standard Home screen → [基本機能 (Basic Function)] → [Settings] → [Change home] → [au Basic Home] → [OK].

Monitoring the Product's Status

Viewing Icons

Notification icons for missed calls, new mail, and running operations are displayed on the left of the status bar, and status icons for product status are displayed on the right.

Main Notification Icon

Icon	Description
	Missed call
	New e-mail message (SMS)
	New e-mail message (E-mail)
	New e-mail message (Gmail)
	Emergency rapid mail
	Snooze alarm or alarm ended without canceling
	Notification of calendar
	Music (Player (LISMO))
	During a call or receiving a call
	High audio quality call with a device supporting au VoLTE
	Answering memo
	Internal memory low
	File receiving request from other Bluetooth® device
	Send/upload data

Icon	Description
	Receive/download data
	Installed completely
	Notification of updating installed apps
	VPN connection
	Software update
	USB tethering
	Wi-Fi® tethering
	Bluetooth® tethering
	Wi-Fi® tethering or Bluetooth® tethering is used with USB tethering
	Screenshot completed
	microSD memory card is mounted

Main Status Icon

Icon	Description
	Time
	Battery level
	100%/ empty/ charging
	Signal strength/Signal condition (LTE/WiMAX 2+)
	level 4/ out of range/ in communication LTE/WiMAX 2+ available*/ roaming (Communication mode according to the network is also shown)
	Airplane mode is set

Icon	Description
	SIM card uninserted
	Wi-Fi® signal strength level 4/ level 0
	Alarm setting
	Silent mode (Vibrate)
	Silent mode (Mute)
	Silent mode (Drive)
	Bluetooth® function in use standby/ connected
	Answering memo set Answering memo: set/ : full
	"Osaifu-Keitai lock" is set
	GPS in use
	Date saver set

* The 2 networks, "LTE" and "WiMAX 2+", are available in Japan. In any case of the screen display is "4G". The Company determines the network less congested to connect due to busy network conditions.

Notification Panel

In the notification panel, you can check notifications and activate apps. Also, ON/OFF setting icons appear and the frequently used functions can be set immediately.

1 Slide down the status bar

The notification panel is displayed.



memo

- To slide up the notification panel, the notification panel can be disabled.
- To delete notifications, flick the notifications left/right to delete. Tap "CLEAR ALL" in the bottom right corner of the screen to delete all the notifications. Some notifications cannot be deleted.

Checking Your Phone Number

1 Home screen → [基本機能 (Basic Function)] → [Settings] → [Profile]

The Profile screen appears.

Setting Silent Mode

Set to the Silent mode so as not to disturb others around you in public places.


1 Press and hold (Volume down key) for at least one second

- The Silent mode is set/canceled.

Changing Silent Mode Type

1 Press  (Volume down key)/ (Volume up key) when the Silent mode is set

2 [Vibrate] / [Mute] / [Drive]


- Pressing  (Volume down key) changes the Silent mode type.
- Home screen → [基本機能 (Basic Function)] → [Settings] → [Sound] → [Silent mode] → [Silent mode type]



《Silent Mode Setting Screen》

Setting Airplane Mode

When Airplane mode is set to ON, wireless functions are disabled (telephone, data communication, wireless LAN (Wi-Fi®), Bluetooth®).

1 Press and hold  (Power button) for at least 1 second → [Airplane mode]

When Airplane mode is set to ON, "✈" appears in the status bar.



- Alternatively, from the home screen → [基本機能 (Basic Function)] → [Settings] → [More] → Turn the Airplane mode to "ON" to set the Airplane mode.



Making a Call

1 Home screen → Tap  → "DIALPAD" tab
The phone number input screen is displayed.

2 Enter a phone number

When calling to fixed-line phones, enter the area code first even if the recipient is in the same city.

3  → Talk → 

Press  (Volume down key)/ (Volume up key) during a call to adjust volume (other party's voice).



memo

- ◎ If you cover the screen by your face etc. while dialing/calling, the display turns off for preventing false operation.
- ◎ Note that even if you cover the microphone, the sound can be conveyed to the other party.

Receiving a Call

- When you receive a call while the backlight is turned on (except for the start screen)

1 Incoming call screen → [ANSWER]

The call starts.

- When you receive a call in sleep mode or while the start screen is displayed

1 Slide "☎" right

The call starts.

2 Talk → [📞]

Setting Step-up Ring Volume

Set to notify by step-up ring when receiving an incoming call from the same number within 10 minutes after receiving a missed call notification.

1 Home screen → [基本機能 (Basic Function)] → [Settings] → [Call] → Turn [Step-up ring volume] "ON"

- It is set to ON at the time of purchase.

Setting Missed Call Notification

Set snooze notification for unconfirmed missed calls to sound ringtone, etc. at the timing you set.

1 Home screen → [基本機能 (Basic Function)] → [Settings] → [Call] → [Missed call notification] → "ON"

2 Mark the notification timing

Displaying Menu

There are two types of methods to display a menu screen; by tapping "[i]", "[☰]" or "[MENU]" and by long-touching entry field or item.

Setting Home Screen

Set various displays of the home screen.

1 Long-touch the open space on the home screen

The setting screen appears on the home screen.

2	WALLPAPERS	Change wallpapers on the home screen.
	WIDGETS	Add widgets on the home screen.
	SETTINGS	Set the scroll settings of wallpaper, etc.

3 Set required items

Saving Battery Consumption

Use "Eco Mode" to set sleep time of backlight, screen brightness etc. so that you can save the battery power. When the battery power is low, set "Data communication" to OFF and limit communications only for calling to extend available time.

1 Home screen → [Others Apps] → [Eco Mode] → [ON] / [OFF]

- Tap "⊙" to check or change the battery saving items.

Safety Precautions

When Using the Product

- Before you start using the product, make sure to read the "Safety Precautions" in this manual to ensure correct use.
- Before you assume that the product is malfunctioning, perform "トラブル診断 (Trouble check)". (Displayed language is Japanese only.)

Home screen → [au Supports] → [故障紛失サポート (Repair and Delivery Service)] → [トラブル診断 (Trouble diagnosis)] (Displayed language is Japanese only) or, check for possible remedies in the following site "トラブル診断" (Japanese) of au homepage:

<https://www.au.com/trouble-check/>

- Communication is not possible even inside the service area in places where the signal does not reach (e.g. tunnels and basements). Also, communication may not be possible in poor reception areas. Communication may be interrupted if you move into a poor reception areas during communications.
- Since this product uses radio waves, the possibility of communication intercepts by third parties cannot be eliminated (though the LTE/WiMAX 2+/GSM/UMTS system has highly secure confidential communication features).

- VoLTE (LTE network) by au is used when connecting with emergency call receiving agencies within Japan. You cannot connect using 3G (circuit-switched network).
- The product is compatible with au World Service. Each network service described in this manual varies depending on the area and service content.
- Since the product is a radio station under the Radio Law, you may be asked to temporarily submit the product for inspection in accordance with the Radio Law.
- The IMEI information of your cell phone is automatically sent to KDDI CORPORATION for maintenance and monitoring operational status of your cell phone.
- If you are using the product overseas, check the relevant laws and regulations of the country/region you visit beforehand.
- The Company is not liable for any damages arising from earthquakes, lightning, storms, floods or other natural disasters, as well as fires, actions by third parties, other accidents, intentional or mistaken operation by the customer, or use under other unusual conditions outside the responsibility of the Company.
- The Company is not liable for any incidental damages (change/disappearance of described content, loss of business income, disruption of business, etc.) arising from use or inability to use the product.
- The Company is not liable for any damages arising from failure to observe the described content of this manual.

- The Company is not liable for any damages arising, for example, from malfunction caused by combination with connected devices or software not related to the Company.
- Captured image data or downloaded data may sometimes be altered or lost due to faults, repair or other handling of the product. The Company is not liable for any damage or lost income resulting from recovery of these data.
- It is recommended you keep a copy of important data in your PC's hard disk, etc. Whatever the cause of the defect or malfunction may be, the Company assumes no responsibility for alteration or loss of saved data.
- Contents saved in the product, such as contacts, mails and favorites, might be altered or lost by an accident, fault, repair or mishandling. Be sure to keep a copy of important contents. Note that the Company assumes no responsibility for any damages or lost profits resulting from altered or lost contents.
- Note that content data (both charged or free content) saved on the product cannot be returned to the customer when the product is replaced for repair of a fault, for example.
- The product uses liquid crystal for its display. The main display response speed may become slow when the ambient temperature is low, which is due to the characteristics of liquid crystal and is not a malfunction. The main display response speed will return to normal at room temperature.

- Although the display used on the product is made using high-precision technology, some pixels (dots) might be lit or out at all times. This is not a malfunction.
- You are recommended to store copies of individual data such as photos/movies you took and music in your PC by sending each file as mail attachment, etc. Note, however, that you may not be able to make copies of some copyrighted data even by the above-mentioned means.
- Do not discard the product together with regular trash. Please cooperate in the collection of the product when the product is no longer needed to protect the environment and effectively use resources. The product (including optional parts) is collected at au shops and other places.

* "The Company" as appears in this manual refers to the following companies:
 Sold by: KDDI CORPORATION-OKINAWA CELLULAR TELEPHONE COMPANY
 Manufactured by: KYOCERA Corporation






memo

- Reproduction of the content of this manual in part or in whole is prohibited.
- The content of this manual is subject to change without notice.
- Every effort has been made in the preparation of this manual. Should you notice any unclear points, omissions, etc., feel free to contact us.

Safety Precautions (Observe Strictly)

- Before using the product, thoroughly read this "Safety Precautions" for proper use.
- These precautions are intended to protect you and others around you. Read and follow them carefully to avoid injury, damage to the product or damage to property.
- The signs below differentiate between the levels of danger that can occur if the product is not used within the specified guidelines.







 DANGER	This sign denotes that "death or serious injury" ^{*1} may directly result from improper use".
 WARNING	This sign denotes that "death or serious injury" ^{*1} may result from improper use".
 CAUTION	This sign denotes that "minor injury" ^{*2} or damage to property ^{*3} may result from improper use".

^{*1} Serious injury: This refers to loss of sight, injury, burns (high- and low-temperature), electric shock, broken bones, injuries with residual aftereffects from poisoning, etc., and injuries requiring hospital admission for treatment or long term hospital attendance as an outpatient.

^{*2} Minor injury: This refers to injuries, burns (high- and low-temperature), electric shock, etc. that do not require hospital admission for treatment or long-term hospital attendance as an outpatient.

^{*3} Physical damage: This refers to extended damage to buildings, furniture, livestock, or pets.

Explanation of Graphic Symbols Used in This Manual

	Indicates an action that is not allowed.		Indicates that handling with wet hands is not allowed.
	Indicates that disassembly is not allowed.		Indicates an action based on instructions that must be done.
	Indicates that use in a place where the product is likely to get wet or allowing the product to get wet is not allowed.		Indicates that the power plug must be disconnected from the power outlet.

■ Precautions Common to the Main Unit, Internal Battery, Charger, au IC Card, IC Card Tray Ejecting Tool (Sample), Peripheral Devices

DANGER



Do not use, store or leave the product in hot places (e.g. by the fire, near a heater, under a kotatsu or futon, in direct sunlight, in a car in the hot sun).

Doing so may cause fire, burns, injuries, or electric shock.



Do not put the product into or near a heating cooking device such as a microwave oven or IH cooker, or high-pressure container such as a pressure cooker.

Doing so may cause fire, burns, injuries, or electric shock.



Do not put sand, dirt, or mud on the product or put it on them directly. Do not touch the product with hands to which sand or others adhere.

Doing so may cause fire, burns, injuries, or electric shock.

For details on water/dust resistance, refer to the following.

▶ P.49 "Notes on Waterproof/Dustproof/Shockproof Properties"



Do not charge when the product is wet with water (drinking water, perspiration, seawater, urine of pet animals, etc.).

Doing so may cause fire, burns, injuries, or electric shock.

For details on water resistance, refer to the following.

▶ P.49 "Notes on Waterproof/Dustproof/Shockproof Properties"



Do not subject the product to strong pressure or break the product. Especially when bringing the product putting in a pocket of clothes, do not let the product hit against surroundings or being put between the objects.

Doing so may cause fire, burns, or injury due to battery damage.

* Examples to avoid

- Sitting or squatting with the product put in a pocket of trousers or skirt
- Putting the product in a pocket of outer wear and catching them in a door or a door of car
- Stepping on the product on a soft object such as a sofa, bed, or bedding, or on a floor



Do not disassemble or modify in that manner.

Doing so may cause fire, burns, injuries, or electric shock.



Do not let the product get wet with water (drinking water, perspiration, seawater, urine of pet animals, etc.).

Doing so may cause fire, burns, injuries, or electric shock.

For details on water resistance, refer to the following.

►P.49 "Notes on Waterproof/Dustproof/Shockproof Properties"



Do not put water (drinking water, perspiration, seawater, urine of pet animals, etc.) into the charging terminal or the external connection terminal.

Doing so may cause fire, burns, injuries, or electric shock.

For details on water resistance, refer to the following.

►P.49 "Notes on Waterproof/Dustproof/Shockproof Properties"



Use the optional products specified by au.

Not doing so may cause fire, burns, injuries, or electric shock.



WARNING



Do not drop, trample, or throw the product or give a strong force or vibration to it.

Doing so may cause fire, burns, injuries, or electric shock.



Do not allow conductive materials (metal pieces, pencil lead, etc.) to come in contact with the charging terminal or the external connection terminal, and do not allow dust to get inside.

Doing so may cause fire, burns, injuries, or electric shock.



Do not cover or wrap the product with bedding, etc. while using or charging the product.

Doing so may cause fire or burns.



If charging is not completed after the specified charging time, stop charging.

Overcharging may cause fire, burns, or injuries.



Make sure to turn off the product or stop charging before you get close to places like a gas station where a flammable gas or dust can be generated.

Using the product in places where a flammable gas can be generated may cause an explosion or fire.

When using Osaifu-Keitai at a gas station, be sure to turn off the power in advance.

(If Osaifu-Keitai lock has been set, cancel the lock before turning off the power.)



Perform the following operations while using, charging, or keeping the product if there are odors, noise, smoke, overheating, discoloring, deformation, or other abnormalities.

- Remove the power plug from the wall outlet.
- Turn the product off.

Not doing the above operations may cause fire, burns, injuries, or electric shock.

CAUTION



Do not use the damaged product.

Doing so may cause fire, burns, or injuries.



Do not leave the product on unstable or sloping surfaces. Be careful especially when the product is set to vibrate.

The product may fall and cause injuries.



Do not use or store the product in humid or dusty places, or places that get hot.

Doing so may cause fire, burns, or electric shock. For details on water/dust resistance, refer to the following.

► P.49 "Notes on Waterproof/Dustproof/Shockproof Properties"



When children use the product, do not let them use incorrectly without instruction by an adult for proper use.

Doing so may cause injuries.



Do not store the product within the reach of small children.

Doing so may cause accidental swallowing, injuries, or electric shock.



Be careful when using the product continuously for a long time or charging as it gets hot. Also, avoid touching the product for a long time by falling asleep unintentionally.

The product or specified charger (sold separately) may become hot when using for a long time such as applications, calling, data communication, watching videos, or while charging. Depending on your physical predisposition and physical condition, contacting with a high temperature part may cause skin redness, itching, rash, or low-temperature burns.

■ Main Unit

DANGER



Do not throw the product into fire or apply heat.

Doing so may cause fire, burns, or injuries.



Do not apply excessive force such as sticking a nail into the product, hitting it with a hammer, or stepping on it.

Doing so may cause fire, burns, or injuries.



If the substance inside the main unit comes into contact with your eyes or mouth, immediately rinse the area with clean water, and then see a doctor right away.

Not doing so may cause loss of sight or poor physical condition due to the influence of the substance, etc. inside the main unit.

WARNING



Do not send data by infrared communication with the infrared port pointing toward eyes.

Doing so may adversely affect on eyes.



Do not operate to point the infrared port toward some other infrared device when using infrared communication function.

Doing so may cause an accident, etc because of malfunction of infrared device.



Do not lighten or flash the lighting part of the light close to person's eye. Be especially careful to keep a sufficient distance from small children.

Not doing so may cause vision disturbance. Also, it may cause an accident such as injuries due to dizziness or shocks.



Do not lighten or flash the light to point at the eyes of someone driving a car etc.

Doing so may interfere with driving and cause an accident.



Do not watch a repeatedly flickering screen for a long time.

Doing so may cause muscle spasms or loss of consciousness, etc.



Do not allow water or other liquids (drinking water, perspiration, seawater, urine of pet animals, etc.), metal pieces, flammable material or foreign object into the au IC card/microSD card slot on the product.

Do not mistake the place and direction of the au IC card or the microSD memory card.

Doing so may cause fire, burns, injuries, or electric shock.



Do not expose the camera lens to direct sunlight for an extended period.

Doing so may cause fire, burns, or injuries by the light-collecting mechanism of the lens.



Turn off the product or set it to Airplane mode before going aboard an airplane.

Since using the product on airplanes is restricted, follow the instructions given by the respective airlines. The product's signals may adversely affect on-board electronic equipment.

If you commit a prohibited act while using the product on an airplane, you might be punished by law.



Follow the instructions given by the respective medical institution regarding the use of the product in a hospital.

Turn off the product in areas where the use of the product is prohibited.

The product's signals may affect electronic equipment and electronic medical equipment.



When using the handsfree call, ringtone is ringing, or in the standby mode, be sure to keep the product off of the ears.

Also, when playing games, video, or music with an earphone microphone connected to the product, adjust the volume to the proper level.

When using the handsfree call, loud noise sounds from the product.

Even in the standby mode, ringtone and vibrator may work suddenly.

Using continuously for a long time with too loud volume may cause a hearing loss, etc.

And, if you cannot hear the sound around you clearly, it may cause an accident.



If you have a weak heart, be careful when setting the ringtone vibration and incoming volume.

Sudden ringtone vibration and ringtone surprise you, it may cause harmful effect on heart.



To use electronic medical equipment, check with electronic medical equipment manufacturer or vendor to determine how devices are affected by radio waves before using.

Not doing so may cause harmful effect on electronic medical equipment etc.



Turn the product off near high-precision electronic control equipment or electronic equipment using low-power signals.

Not doing so may cause the equipment to fail or malfunction.

* Examples of electronic equipment to avoid
A hearing aid, an implanted pacemaker, an implanted cardioverter-defibrillator, other electronic medical equipment, or other automatic control devices, etc. To use an implanted pacemaker, an implanted cardioverter-defibrillator, or other electronic medical equipment, check with electronic medical equipment manufacturer or vendor to determine how devices are affected by radio waves before using.



When the display or camera lens is accidentally broken, be careful of broken glass or exposed internal parts of the product.

Not doing so may cause burns, injuries, or electric shock with damaged parts or exposed parts.



If the internal battery leaks or gives off a strange smell, immediately remove the product from the vicinity of open flames.

Not doing so may cause leaking fluid to ignite or explode.



Be careful not to let your pet bite the product.

May cause internal battery to ignite, burst, heat, or leak, and may cause fire, burns, or injuries.

CAUTION



Do not swing the product around by holding strap, etc.

Doing so may cause injuries or other accidents.



If the display breaks and the fluid etc. leaks out from inside, do not let the fluid contact with the skin on your face or hands or clothes.

Doing so may cause eye or skin problems.

If the substance inside the display comes into contact with your eyes or mouth, immediately rinse the area with clean water.

If the fluid etc. enters your eyes or mouth, immediately see a doctor after rinsing.



Do not discard the old product together with regular trash.

Doing so may cause fire, burns, or injuries. Also, may cause environmental disruption. Bring them to a sales outlet such as au Shop. If your local municipality has a battery recycling program, dispose of them as provided for.



If fluid etc. leaks out from the internal battery, do not let the fluid contact with the skin on your face or hands, or clothes etc.

Doing so may cause eye or skin problems.

If the substance inside the display comes into contact with your eyes or mouth, immediately rinse the area with clean water.

If the fluid etc. enters your eyes or mouth, immediately see a doctor after rinsing.



To use the product in car, check with automobile manufacturer or dealer to determine how vehicle devices are affected by radio waves before using.
In rare cases, using the phone in some vehicle models can cause the vehicles electronic equipment to malfunction. In that case, stop using the product immediately.



If you develop skin problems, stop using the product immediately, and see a doctor.

Itching, rashes, eczema, etc. sometimes occurs depending on your physical constitution and condition.

For material of each part ►P.42 "Material List"



Make sure that there is no adhered metal pieces (cutter blade, staples, etc.) as the speaker part of this product generates magnetism.

Not doing so may cause injuries with adhered metal pieces.



Use the product in a well-lighted area and put some distance between you and the display when watching the display.

Using the product in dark places or near eyes may affect your vision.

Charger

WARNING



Do not use if the cord of the specified charger (sold separately) is damaged.

Doing so may cause fire, burns, or electric shock.



Do not use the specified charger (sold separately) in a humid place such as a bathroom.

Doing so may cause fire, burns, or electric shock.



Do not touch the specified charger (sold separately) if you hear thunder.

Doing so may cause electric shock.



Do not short the charging terminal while it is connected to an outlet. Do not allow any part of your body such as your hands or fingers to come into contact with the charging terminal.

Doing so may cause fire, burns, or electric shock.



Do not place heavy objects on the cord of the specified charger (sold separately), or do not pull the cord with excessive force.

Doing so may cause fire, burns, or electric shock.



When you plug/unplug the specified charger (sold separately) into/from the outlet, do not contact metal straps or other metal objects with the jack.

Doing so may cause fire, burns, or electric shock.



Do not connect a transformer for overseas travel (travel converter) to the specified charger (sold separately).

Doing so may cause ignition, overheating, or electric shock.



Do not apply excessive force on the connection part with the specified charger (sold separately) connected to the product.

Doing so may cause fire, burns, injuries, or electric shock.



Do not touch the cord, charging terminal or power plug of the specified charger (sold separately) with wet hands.

Doing so may cause fire, burns, or electric shock.



Use the product at the specified power supply voltage.

When charging the product overseas, use the specified charger (sold separately) for global use.

Incorrect power supply voltage may cause fire, burns, or electric shock.

AC adapter : 100 V AC (Connect to an AC outlet for internal household use)

AC adapter for global use : 100 V AC - 240 V AC (Connect to an AC outlet for internal household use)



Wipe off dust on the power plug.

Not doing so may cause fire, burns, or electric shock.



Fully plug the specified charger (sold separately) into the outlet.

Not doing so may cause fire, burns, or electric shock.



When you disconnect the power plug from an outlet, do not pull the cord of the specified charger (sold separately) with excessive force. Instead, grasp the adapter to disconnect.

Pulling the cord of the specified charger (sold separately) may damage the cord and cause fires, burns, electric shock, etc.



When plugging/unplugging the specified charger (sold separately) into/from the product, do not pull the cord with excessive force. Instead, plug/unplug it straightly toward the jack to connect.

Not doing so may cause fire, burns, injuries, or electric shock.



Stop using the product immediately if you notice deformation of the charging terminal. Also, stop using the product after recovering the original form of the terminal.

Short-circuiting of the charging terminal may cause fire, burns, injuries, or electric shock.



When the specified charger (sold separately) is not to be used for a long time, disconnect the power plug from the outlet.

Not doing so may cause fire, burns, or electric shock.



Immediately remove the power plug from the outlet if water or other fluids (drinking water, perspiration, seawater, urine of pet animals, etc.) get on the adapter.

Not doing so may cause fire, burns, or electric shock.



Always remove the power plug from an outlet when cleaning the equipment.

Not doing so may cause fire, burns, or electric shock.



CAUTION



Do not touch the specified charger (sold separately) for a long time when connected to an outlet.

Doing so may cause burns.

■ au IC Card



CAUTION



Be careful of the cut surface when handling an au IC card as it may damage a part of your body such as fingers, etc.

The cut surface may be sharp, and it may cause injuries.

■ IC Card Tray Ejecting Tool (Sample)



WARNING



The tip part of IC Card Tray Ejecting Tool (sample) is sharp. Do not point it at yourself or others.

Doing so may damage yourself or others, causing injury or loss of sight.

CAUTION



If you develop skin problems by using IC Card Tray Ejecting Tool (sample), stop using the product immediately, and see a doctor. Itching, rashes, eczema, etc. sometimes occurs depending on your physical constitution and condition.

For material of each part ▶ P.42 "Material List"



Store the tool out of reach of small children.

Not doing so may cause accidental swallow, suffocation or injuries.

■ Use near Medical Instruments and Inside Medical Facilities

WARNING



Wearers of medical equipment such as implanted pacemakers or defibrillators must carry and use the product at least 15 cm away from the implanted device.

Radio waves may affect the performance of electronic medical equipment.



When using electronic medical devices as home medical treatment other than an implanted pacemaker and an implanted cardioverter-defibrillator outside medical facilities, check individually with the manufacturer of the electronic medical equipment regarding the influence of radio waves.

Radio waves may affect the performance of electronic medical equipment.



Make sure that the product will not emit any signals (turn off power, put it in Airplane mode, etc.) if within 15 cm of those around you, such as where crowded and you cannot move freely.

Since there may be people with an implanted pacemaker or an implanted cardioverter-defibrillator nearby. Radio waves may affect the performance of electronic medical equipment.



When using the product in medical facilities, be sure to observe the regulations of the facility.

Radio waves may affect the performance of electronic medical equipment.

<Material List>

■ Qua phone QX main unit

Part	Material	Surface Treatment
Exterior case (main display)	PA resin	UV cured acrylic coating
Back cover, card slot cover, volume down/up button	PC resin	UV cured acrylic coating
Display (screen)	Chemically strengthened glass	Antifouling
Power button, camera ring	Aluminum	Anodized aluminum
Camera lens	PMMA resin	Hard coat processing
Earphone terminal	PA resin	-
Mobile light	PMMA resin	-

■ IC Card Tray Ejecting Tool (sample)

Part	Material	Surface Treatment
Exterior	POM resin	-

Handling Precautions

These precautions are provided to prevent product faults and to ensure that performance can be fully demonstrated. Thoroughly read these precautions to ensure correct use.

■ Precautions Common to the Main Unit, Internal Battery, Charger, au IC Card, IC Card Tray Ejecting Tool (Sample), Peripheral Devices

- Do not apply excessive force to the product during use. Be sure not to put the product into a tightly packed bag or place a heavy object on the product in a bag. Sitting on the product in your pocket might damage the display or internal circuit board resulting in a malfunction. Keeping an external connection device connected to the external connection terminal or earphone microphone terminal might damage the connector resulting in a malfunction. Such damage and malfunction are not covered by the warranty, even if there is no external damage.
- To ensure the waterproof property (equivalent to IPX5 and IPX8) or the dustproof property (IP5X) of the product, use the product with the card slot cover tightly closed. Note that the waterproof property is not guaranteed in every usage condition. Do not allow water to get inside the product, or splash water on a specified charger (sold separately) or optional accessories. Do not open/close the card slot cover in the rain or with any water on the surface of the product. Doing so may cause water intrusion resulting in internal corrosion. Malfunctions determined to be caused by such water intrusion are not covered by the warranty.

- Do not use the product in extremely hot, cold or humid places.
(Use within an ambient temperature range of 5°C to 35°C and humidity range of 35% to 85%.)
 - Charger
 - Peripheral devices
- Do not use the product in extremely hot, cold or humid places.
(Use within an ambient temperature range of 5°C to 35°C and humidity range of 35% to 90%. Temporary use at -21°C to 50°C is allowed.)
 - Main unit
 - au IC card (attached to the main unit)
- Do not use in places subject to lots of dust or vibration. Doing so may cause malfunction.
- Clean the external connection terminal and earphone microphone terminal with dry cotton swabs, etc. every now and then. Soiling may result in a poor connection. Do not exert a strong force to clean the external connection terminal or earphone microphone terminal to prevent deformation.
- Clean the product with a soft dry cloth (such as the type used for eyeglasses). Forceful rubbing with a dry cloth may scratch the display. The display may be stained if splash or smear is left attached to the surface. Wiping the product using alcohol, thinner, benzene, detergent, etc. might erase the printing on the outer cover or cause malfunction.
- Use as far away as possible from land-line phones, TVs and radios. Use nearby might affect them.
- The product may become warm while charging or during other operations, depending on the situation, but this is not abnormal.
- Do not place near corrosive chemicals or in places where corrosive gas is generated. Doing so may cause malfunction.
- Do not use outside when you can hear thunder. Doing so might risk lightning strikes and electric shock.
- Be sure to use only the specified peripheral devices. Use of other peripheral devices might cause malfunction.
- Do not put the product in a cooking apparatus such as microwave oven or a pressure vessel. Doing so may cause malfunction.
- The customer is not allowed to disassemble, modify or repair the product. Doing so may cause malfunction. Modification of the product is in violation of the Radio Law and Telecommunications Business Law.
- Do not allow conductive foreign objects (metal fragments, pencil leads, etc.) to come into contact with or get inside the connection terminal, earphone microphone terminal, etc. to avoid the connection terminal, earphone microphone terminal, etc. from short-circuit. Doing so may cause malfunction.
- In the event that the product gets wet while charging, immediately disconnect the power plug of the specified charger (sold separately).

- Do not use the product while driving a car or motorbike, riding a bicycle or walking. Use of a cell phone while driving a car or motorbike is prohibited by law. Use of a cell phone while riding a bicycle may be punishable by some regulations.
- Using or charging the product in a bag or while it is covered with bedding might cause malfunction.
- When using a specified charger (sold separately) or external device, insert/remove the connector straight to/from the terminal. Make sure the orientation of the connector. Unless it's correct, it may cause a fault.
- Do not expose the camera lens to direct sunlight for an extended period. Doing so may cause malfunction.
- Do not store the product in places subject to direct sunlight (e.g. in a car), places that get hot, places that get extremely cold, and in humid or dusty places. Doing so may cause malfunction.
- Do not leave the product on unstable or sloping surfaces. Be careful especially when the product is charging or set to vibrate. The product may fall and cause malfunction.
- For charging the product, do not exceed the rating of an outlet or wiring device by standard connection etc.

■ Main Unit

- The battery is built into the product and it is not user replaceable. For information on battery replacement, contact an au shop or Customer Service Center.
- Do not forcefully press, tap or intentionally subject the display to strong impact. Doing so might cause scratching or damage.

- Do not forcefully press your fingernails, sharp objects, or hard objects against buttons or display surface. Doing so may cause scratching or damage.
The touch panel is designed to be lightly touched by fingers. Avoid pressing forcefully or using sharp objects (fingernail, ballpoint pen, pin, etc.).
The touch panel might not respond to the following types of operation. These may also result in malfunction.
 - with fingernails
 - with another object placed on the operation area
 - with a protective film or sticker adhered
 - under water
 - with any water or condensation on the touch area
 - with wet or sweaty fingers
- Never use the modified product. Use of a modified device violates the Radio Law and Telecommunications Business Law.
The product has acquired such certification as conformity with technical regulations for a specified radio station based on the Radio Law and conformity with technical regulations for a terminal device based on the Telecommunications Business Law, and the "Technical Conformity Mark" can be confirmed internally in the product.
Home screen → [基本機能 (Basic Function)] → [Settings] → [About phone] → [Compliance information]
If the modification is made to the internal components, the certifications of conformity with technical regulations will become invalid. Never use the product without these certifications valid. Doing so violates the Radio Law and Telecommunications Business Law.

- Take care not to place magnetized items such as magnetic cards, speakers and TV sets near the product as it might cause malfunction.
Putting strong magnetism close to the product might cause false operation.
 - Do not bring magnetized cards such as cash cards, credit cards and prepaid cards closer to the product. Doing so may result in loss of recorded information.
 - When you put the product in your pocket or bag, take care so that the display does not come in contact with metal objects or other hard objects. Not doing so may cause scratching or damage. Straps with metal or other hard parts that may come in contact with the display may cause scratching or damage.
 - When suddenly brought into a warm place from a cold place, or when in a humid location, or when used where temperature suddenly changes (e.g. near the air discharge port of an air conditioner), water droplets (i.e. condensation) sometimes are formed inside the product. Note that when used under conditions such as this, humidity might cause corrosion or a fault.
 - Camera lens or inside of the display may mist over (dew formation) because of usage environment such as temperature or humidity. This is not malfunctioning or abnormal.
- Environment for easily generating dew formation on the camera lens or inside of the display
In the following cases, such as large temperature change or high humidity, camera lens or inside of the display mist over because of usage environment.
 - Bring the product from a high temperature land into a low temperature water.
 - Bring the product from a cold place into a warm place such as an indoor.
 - Open/Close the card slot cover, etc. in a high humidity environment.
 - How to reduce condensation
Do not use the product in places that get hot and humid, and sandy or dusty places. Leave the product with the card slot cover opened for a while until the condensation is cleared when the ambient temperature is held constant.
 - While writing/reading data to/from a microSD memory card, do not subject the product to vibration or impact, or turn off the power. Doing so may cause data loss or malfunction.
 - Do not cover the sensor with your finger or put a sticker on it. May hinder the sensor from detecting the ambient light level and functioning correctly.
 - Do not put a sticker, etc. on the proximity sensor. May cause the sensor to malfunction and make the display always turned off while receiving a call or during a call or make it impossible to deactivate sleep mode.
 - Any soiling on the proximity sensor may cause misoperation. Wipe the sensor with a soft, dry cloth.

- Keep the card slot cover closed when using the product. Using the product with the cover opened can allow dust, liquid, etc. to enter and cause malfunction.
- Do not allow liquids, metal objects, or other foreign objects to get inside of the au IC card or microSD memory card slot. Doing so may cause malfunction.
- Do not give strong impact on the product such as dropping, throwing, stomping. Doing so may cause malfunction.
- Do not place the product directly on sand at a beach, etc. If sand or other small particles get inside the microphone or speaker, etc., it may cause the volume to drop or malfunction.

■ Touch Panel

- Any soiling on the display surface may cause false operation. Wipe the display with a soft, dry cloth.
- Putting stickers or sheets (e.g. commercially available protective films, peep prevention sheets) on the display might cause incorrect operation of the touch panel.
- When carrying the product in your pocket or bag, take care not to put the touch panel close to metals or other conductive materials, as it might cause false operation of the touch panel.

■ Internal Battery



Li-ion 00

(The internal battery of the product is a lithium-ion battery.)

The internal battery is not fully charged at the time of purchase. Charge the battery before using the product. Also charge the battery after long periods of disuse before using the product.

- Use in very hot or cold environments, for example, when left in an automobile with the windows closed in summer, will cause the battery capacity to drop and shorten the available battery usage time. This will also shorten the internal battery's service life. Try to use the internal battery as much as possible at room temperature.
- After the internal battery is charged, battery power decreases bit by bit even if the product is not used. The internal battery may be discharged if the product is not used for a long time. We recommend charging the battery before use.
- The internal battery is a consumable accessory. If the performance of an internal battery does not recover (e.g. the usable time after each charge has become extremely short), the internal battery is at the end of service life, so stop using the product. Since the battery is built into the product, au shops keep your product and replace the battery for a fee. Please note that you may not be able to use the product for a certain period. Please understand. Note that the length of service life varies depending on the usage condition, etc.

- The internal battery may swell up as it approaches the end of its battery life. This is due to the properties of lithium-ion batteries, and is not a problem in terms of safety.

■ Charger

- Do not wrap the cord of the specified charger (sold separately) around the adapter unit. Do not forcibly bend the specified charger's (sold separately) plug or the connection between the connector and power cord. Do not place heavy objects on the cord of the specified charger (sold separately) or USB connection cable, or do not pull the cord with excessive force. Doing so may cause malfunction.
- When unplugging the power plug of the specified charger (sold separately) from the power outlet, hold and pull the power plug. If you pull the cable, it might be damaged.

■ au IC Card

- Do not forcibly remove or insert the au IC card. Be careful not to exert excessive force when inserting the card into your au cell phone.
- You are responsible for any damage caused by inserting your au IC card into some other IC card reader/writer, etc.
- Do not put stickers, etc. on the au IC card.
- Do not damage the card (use in a hot place, throw into fire, contact the metal part with foreign object, give an impact, bend, apply a load, moisten, etc.). Doing so may cause data loss or malfunction.

■ IC Card Tray Ejecting Tool (Sample)

- Do not apply excessive force to IC Card Tray Ejecting Tool (sample). Doing so may cause malfunction or damage.
- IC Card Tray Ejecting Tool (sample) is not covered by the free-of-charge repair warranty.

■ Camera

- When photographing important occasions, take a trial shot and check the shot image to make sure it is correctly shot.
- Do not shoot in areas where shooting is prohibited.

■ Copyrights and Rights of Portrait

- You are not allowed to copy, distribute, publish, modify or edit the data you shot, recorded or downloaded using the product without consent of the copyright holder, except for personal use, under the copyright law.
In addition, do not use or modify portraits or names of other individuals without their consent, as it may infringe on rights of portrait.
Note that shooting and recording might be restricted at some live performances, shows and exhibitions even for personal use.
- Be careful about the copyright and portrait right when posting photos you shot, etc. on Internet homepages.

■ Backup Content On the Product

- Please back up important content registered to the product or downloaded to the product from an outside source. Content recorded to memory on the product sometimes disappears or is altered by unexpected factors, such as static electricity or a fault, repair, mishandling, etc.

■ FCC Certification Information

- The product is certified by Federal Communications Commission (FCC)
The product's FCC ID is JOYEA34.
You can view this certification in the following way.
How to confirm:
Home screen → [基本機能 (Basic Function)] → [Settings] → [About phone] → [Compliance information]

Notes on Waterproof/Dustproof/ Shockproof Properties

The product has a waterproof property equivalent to IPX5^{*1} and IPX8^{*2}, as well as a dustproof property equivalent to IP5X^{*3} on the condition that the card slot cover is completely attached (by Company test methods).

And the product has shock resistance that meet the MIL-SPEC^{*4} (based on in-house testing).

Before using the product, thoroughly read "Important precautions before use" to ensure correct use. Failure to follow the contents described in these sections may cause the intrusion of water, sand or other foreign material, resulting in overheating, ignition, electric shock, injury or a fault.

^{*1} IPX5 equivalent means that the product will maintain its operability as a phone even if it is sprayed with water from a 6.3 mm diameter nozzle at a distance of about 3 meters for more than 3 minutes at a rate of about 12.5 liters per minute from any direction.

^{*2} IPX8 equivalent means that the product will maintain its operability as a phone with no water getting inside the main unit even if it is gently submerged in a tank of still tap water at room temperature to a depth of 1.5 meter for about 30 minutes.

^{*3} IP5X means that the product will have and safely maintain functionality as a phone after being removed from a test device filled with particles up to 75 μm in diameter and agitated for 8 hours. (This does not mean that the product completely prevents the intrusion of particles.)

^{*4} Drop test carried out according to MIL-STD-810G Method 516.7-Shock-Procedure IV as stipulated by the US Department of Defense (product dropped in 26 directions from height of 1.22 m onto plywood (lauan)). Product shock resistance assumes usage in daily situations; subjecting the product to excessive shock such as by throwing or causing/letting the product fall forcefully may break the product. Even if performance is not affected, being dropped can cause scratches, etc.

Operation of the product in every possible condition during actual use is not guaranteed. Malfunctions determined to be caused by mishandling by the customer are not covered by the warranty.

Important Items to Remember before Use

- Close firmly the card slot cover of the product. Water resistance is effective when completely sealed.
- Never open or close the card slot cover if your hand or the product is wet.
- Do not let the product submerged into or get wet with the liquids (seawater, water from a swimming pool, hot water of hot spring, water containing soap, detergent, bath powder, alcohol, soft drink, seasoning, etc.) other than tap water. Also, do not use it in a place where it gets wet with pet urine. If the product gets splashed, immediately rinse it off with tap water.
- Do not place the product directly on sand at a beach, etc. Sand or other small particles might get inside the speaker or mouthpiece (microphone), causing the volume to drop. If sand gets inside the product, it might cause overheating or a fault.
- Do not use the product underwater.
- Do not use or leave the product in a humid place such as a bathroom or kitchen for an extended period of time.
- Moisture may still remain after draining. While this will not affect use, you should not leave the product next to items you do not want to get wet. Product may wet clothing, inside of carry bag, etc.

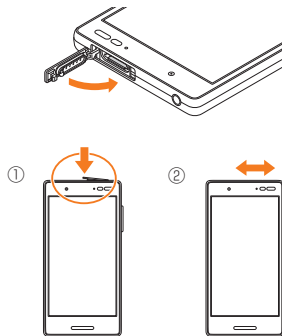
- Drain any water in the speaker or mouthpiece (microphone) that may be affecting audibility.
- Product is not designed to resist water pressure. Avoid exposing to high water pressure or submersing in water for a long period.
- Do not wash the product in a washing machine or ultrasonic bath.
- Do not immerse the product into a bathtub. Product is not designed to be heat resistant.
- The rapid changes of temperature may cause condensation, resulting in malfunction. Wait until the product reaches room temperature before you bring the product from a cold place into a warm bathroom.
- The product does not float on water.

● Card slot cover

- Close firmly the card slot cover of the product, and make sure the cover is completely closed. Any minute particles becoming lodged between contact surfaces (a single hair, etc.), no matter how small, can cause seepage.
- Do not wear gloves while opening/closing the card slot cover of the product. Any minute particles becoming lodged between contact surfaces (a single hair, etc.), no matter how small, can cause seepage. Before closing the cover, wipe any water, soiling, etc. with a dry, clean cloth, no matter how small.
- Any deterioration or damage with the card slot cover will affect water resistance.

How to close the card slot cover

① After stowing the cover hinge, press on the cover with the flat part of your finger. ② Rub your finger over the cover in the direction of arrow to ensure that the cover is not partially open.



● If any liquid other than plain water gets on the product

- If anything other than water (seawater, washing detergent, alcohol, etc.) gets on the product, immediately rinse with water.
- Wash with slightly weak running water (less than 6 liters/minute) with tap water (5°C to 35°C) at a position about 10 cm away from the faucet or shower.
- If the product gets soiled, wash by hand without using a brush, etc., holding the product so that the card slot cover does not open.

● After the product gets wet

- After becoming wet, drain water and wipe the product with a dry, clean cloth.
- In cold regions, any water on the product may freeze. Using the product with frozen water may cause malfunction. Do not leave water drop on the product.

● Rubber seal

- The rubber seal around the card slot cover is important in maintaining water resistance. Do not scratch or remove it.
- Be careful not to pinch the rubber seals when closing the card slot cover. Trying to close the cover with a seal pinched can scratch the seal and affect water resistance. Any minute particles becoming lodged between contact surfaces (a single hair, etc.), no matter how small, can cause seepage.
- Any liquid other than water (alcohol, etc.) on the product can affect product durability.
- Do not insert pointed objects in the card slot cover. Doing so may damage/deform the product or scratch the seal, allowing water seepage.

- Parts used for maintaining water resistance should be replaced every 2 years regardless of their appearance. Contact your nearest au shop for replacement.

● Heat resistance

- Do not submerge the product in hot water or get it wet with hot water. Do not use the product in saunas or expose it to hot air from hair dryer etc. Product is not designed to be heat resistant.

● Shock

- The product is resistant to shock, but product shock resistance assumes usage in daily situations; subjecting the product to excessive shock such as by throwing or causing/letting the product fall forcefully may break the product.

Precautions on Charging

Optional accessories are not water/dust resistant. Note the following before and after charging.

- Never charge the battery if the product is wet.
- Make sure the product is not wet. To charge the product after it has gotten wet, drain water well and wipe with a dry, clean cloth before inserting the microUSB plug into the external connection terminal.
- Do not touch the specified charger (sold separately) with wet hands. Doing so may cause electric shock.
- Do not expose the specified charging equipment (sold separately) to water. Do not use it near water, such as in a bathroom, shower room, kitchen, or washroom. Doing so may cause fire, burns, electric shock, or a fault. Do not bring it into a bathroom, etc. even when you are not charging with them. Doing so may cause fire, burns, electric shock, or a fault.

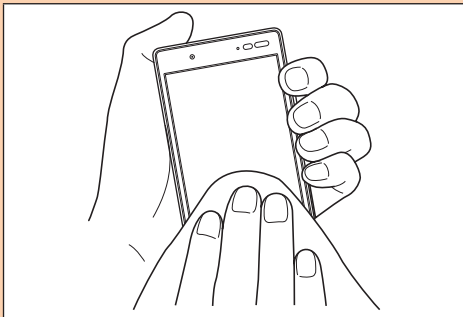
How to Drain Water

If you use the product after it gets wet, drain the speaker and mouthpiece (microphone).

Water remaining in those parts might wet your clothes or bag, or the sound might become hard to hear.

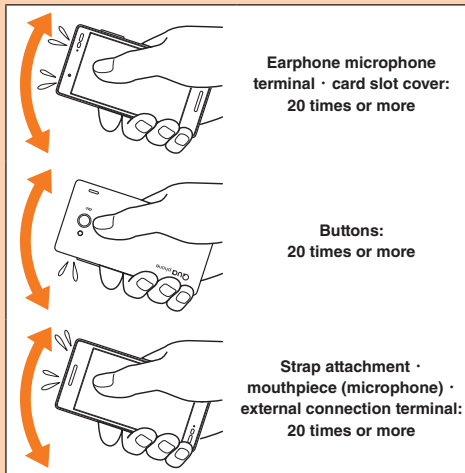
Follow the steps below to drain water.

- 1 Wipe water thoroughly on the surface of the product with a clean dry lint-free cloth**



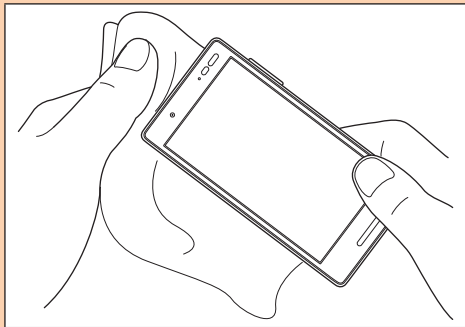
2 Shake the product

- ① Hold the product firmly and shake it in the direction of arrows until water does not come out.
 - * When shaking the product, stay alert to your surroundings.
 - * Be careful not to have the product pop out, and hold it firmly to drain water.



- ② Wipe drained water.
 - * The speaker, mouthpiece (microphone), external connection terminal, and earphone microphone terminal are particularly hard to drain water from. With those parts facing down, press them against the cloth to wipe off any water.
- ③ Place the product on a dry towel or cloth, then leave it at room temperature for a while.

- 3** Press the product gently against a clean dry lint-free cloth, and wipe off water remained in the gaps such as in the speaker, mouthpiece (microphone), external connection terminal, earphone microphone terminal, etc.



- 4** Leave the product for 1 hour or more at room temperature to dry after removing drained water thoroughly

Even after you take these procedures, water may remain on the product. Do not place the product near things that you do not want to wet.

Also, take care not to wet your clothes, bag, etc.

Notes on Using Bluetooth®/ Wireless LAN (Wi-Fi®) Function

- The Bluetooth® function of the product conforms to domestic standards of Japan, FCC standards, and has been certified.
- Use of the Bluetooth® function is limited in some countries or regions. If you use the product overseas, check the relevant laws and regulations of the country/region you visit.
- The wireless LAN (Wi-Fi®) function of the product conforms to domestic standards of Japan, FCC standards, and has been certified.
- Use of the Wireless LAN (Wi-Fi®) function is limited in some countries or regions. If you use the product overseas, check the relevant laws and regulations of the country/region you visit.
- The 2.4 GHz band used by wireless LAN (Wi-Fi®) and Bluetooth® devices is operated by various other devices. For this reason, the communication speed and connectable range may be decreased, or disconnection may occur, due to interference from other devices.
- Do not use this product in places where electromagnetic waves are generated or near electric products, AV and OA equipment, or other magnetized devices.
- Subjecting this product to magnetic or electrical noise might increase noise and prevent it from performing communications. (This product is particularly susceptible to noise when it is used near a microwave oven.)

- Using this product near a TV, radio or similar appliance might cause reception interference and disrupt TV images.
- Searching might not be successful if there are multiple wireless LAN (Wi-Fi®) access points near to the product or the same channel is being used.
- Since using the product on airplanes is restricted, follow the instructions given by the respective airlines.
- The communication speed and connectable range vary depending on the distance between communication devices, obstacles and the devices used.

Cautions on Using 2.4 GHz Band

The frequencies used by the Bluetooth® and/or Wireless LAN (Wi-Fi®) function of the product are in the 2.4 GHz band. In this frequency band, other similar wireless stations, in-plant wireless stations for mobile unit identification that require a license for use, such as factory production lines, specific small power wireless stations that do not require licenses, amateur wireless stations (collectively called "other wireless stations" from here on) are operated in addition to home electrical appliances such as microwave ovens, devices for industrial, scientific and medical devices.

1. Before using the product, make sure that "other wireless stations" are not in operation nearby.

2. In the event that instances of radio wave interference have occurred between the product and "other wireless stations", immediately either relocate the product or stop operation of the device (stop emission of radio waves).
3. If unsure or require assistance, contact an au shop or Customer Service Center.



memo

- ◎ Connections between the product and all other Bluetooth® and wireless LAN (Wi-Fi®) devices have not been confirmed. Therefore, connections with all Bluetooth® and wireless LAN (Wi-Fi®) devices are not guaranteed.
- ◎ This product supports security features for wireless communications that are compliant with the Bluetooth® and wireless LAN (Wi-Fi®) standard specifications, but the security may not be sufficient depending on the usage environment and configuration. Be careful when making data communication using Bluetooth® or wireless LAN function (Wi-Fi®).
- ◎ Wireless LAN (Wi-Fi®) has the advantage that it can be freely connected anywhere within the radio wave range, as it uses radio waves for exchanging information. However, not making security settings allows the risk of malicious use by third parties. While at the customer's discretion and responsibility, it is recommended that you make security settings before using the product.
- ◎ The Company assumes no responsibility for leakage of data or information that may occur during Bluetooth®/ wireless LAN (Wi-Fi®) communication.
- ◎ Since Bluetooth® and wireless LAN (Wi-Fi®) functions use the same frequency band, using the both functions at the same may cause radio wave interference resulting in decreased communication speed or disconnection from the network. If connection fails, stop using either of the Bluetooth® and wireless LAN (Wi-Fi®) functions.

Bluetooth® and wireless LAN (Wi-Fi®) functions of the product use frequencies in the 2.4 GHz band.

● **Bluetooth® function: 2.4FH1/XX1**

2.4FH1/XX1

This product uses the 2.4 GHz band. FH-SS is used as the modulation scheme. The interference distance is about 10 m or less.

● **Wireless LAN (Wi-Fi®) function: 2.4DS4/OF4**

2.4DS4/OF4

This product uses the 2.4 GHz band. DS-SS and OFDM are used as the modulation schemes. The interference distance is about 40 m or less.

This means that all bandwidths are used, and that band of mobile unit identification devices can be avoided.

Available channels vary depending on countries.

For use in an airplane, check with the airline company in advance.

Cautions on Using 5GHz Band

The frequencies used by the Wireless LAN (Wi-Fi®) function of this product are in the 5 GHz band. Outdoor use of 5.2 GHz band and 5.3 GHz band is prohibited under the Radio Law.

The used channels of the product are as follows.

- W52 (5.2 GHz band / 36, 38, 40, 42, 44, 46, 48 ch)
- W52 (5.3 GHz band / 52, 54, 56, 58, 60, 62, 64 ch)

- W56 (5.6 GHz band / 100, 102, 104, 106, 108, 110, 112, 116, 118, 120, 122, 124, 126, 128, 132, 134, 136, 140 ch)

IEEE802.11b/g/n

IEEE802.11a/n/ac

J52 W52 W53 W56

Security Code/PIN Code

The product has various security codes that you can use.

Security Code

The available security codes are as follows. Do not forget the various security codes that are set as they are necessary for various operations and contracts. Make sure to change the initial value to your own code before use.

● Security code

Example of usage	①To do remote operation of voice mail and call forwarding services from a landline phone
	②To use Customer Service Center and to do various inquiries, applications, and modifications on the au homepage
Initial value	A four digit number chosen by the customer and noted on the application form

● Lock No ("Osaifu-Keitai lock")

Example of usage	To use "Osaifu-Keitai lock"
Initial value	1234

PIN Code

PIN Code

To prevent unauthorized use of the au IC card by a third party, you can set the product to require PIN code entry every time the power is turned on. You also need to enter PIN code when setting whether PIN code entry is required. If PIN code is incorrectly entered three times consecutively, the PIN code will be locked. You can unlock the PIN code using PUK code.

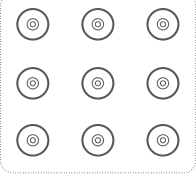
- At the time of purchase, the PIN code is "1234", and entry is not required. You can change the PIN code to any 4- to 8-digit number and the product to require entry if necessary.
- To use the product with a PIN code required, be sure to change the PIN code to your own number you have chosen.

PUK Code

In case PIN code is locked, you can unlock it by entering PUK code.

- PUK code is an 8-digit number given at the time of purchase, which is printed on the back side of the plastic card on which your au IC card is attached.
- After entering PUK code, you need to set a new PIN code.
- If PUK code is incorrectly entered ten times consecutively, contact an au shop, PiPit or Customer Service Center.
- PIN code is not reset by initializing the product.

<Please print this section and use>

[Password entry field]	
Google account ID	Security (start screen) Lock: Lock No.
<input type="text" value="@gmail.com"/>	<input type="text"/>
Google account password	Security (start screen) Lock: Password
<input type="text"/>	<input type="text"/>
au ID account ID	Security (start screen) Lock: Pattern
<input type="text"/>	<div></div>
au ID account password	
<input type="text"/>	
Facebook account ID	
<input type="text"/>	
Facebook account password	
<input type="text"/>	

* Strictly manage your account and password to prevent a third party from obtaining them.

Notes on Data Communication Charges

- Since constant Internet connection is possible with the product, data communication may be performed automatically by some applications, resulting in high data communication charges. Therefore, subscription to a data flat-rate service/data communication charge discount service is recommended.
- To browse homepages, download applications, communicate using applications, send/receive mails and configure various settings with the product, connection to the Internet is required, to which data communication charge applies.

* Data communication charge does not apply to wireless LAN (Wi-Fi®) connection.

Notes on Applications

- Be sure to check the security of the application, then install it at your own risk. Some applications might cause virus infection, damage various data, and send out your location information, usage history or personal information stored in your cell phone via the Internet.
- The Company assumes no responsibility for any problems that might be caused by applications you have installed. In such case, you may be charged a repair fee even during the warranty period.
- The Company assumes no responsibility for any disadvantage brought to you or any third party by applications you have installed.
- Some applications require that a microSD memory card be inserted.
- Some applications prohibit the product from entering sleep mode while they are active, or rapidly drain the battery while running in the background.
- Operation procedures and screen appearances of the applications preinstalled in the product and those installed by you are subject to change without notice as a result of version upgrade. Note that there may be differences with descriptions in this manual.

Setting the App Permissions

The first time you launch an app/function that accesses the functions or information of the product, a confirmation screen for requesting access permission appears.

If the confirmation screen appears, confirm the content and tap "DENY"/"ALLOW".

Example: When Gallery is activated

1 Apps permission confirmation screen → [DENY] / [ALLOW]

Tap "ALLOW", allow the use of function normally. When you use multiple function, follow the same operations for each function.



memo

- If you do not permit, app/function may not be activated or use of function may be limited.
- For some apps/functions, an explanation screen for the permission appears. The confirmation screen may also appear multiple times, or the display may differ. Confirm the displayed content and follow the onscreen instructions.
- In this manual, description of confirmation screens may be omitted.

Cell Phone Etiquette

■ Use of Cell Phones is Not Allowed in the Following Places!

- Do not listen to music, watch videos while driving a car or motorbike, or riding a bicycle. Use of cell phones while driving a car or motorbike is prohibited by law. (Use of cell phones while riding a bicycle may also be punishable by law.) In addition, stay alert to the traffic around you even when walking. Surrounding sounds might not be heard clearly, and gazing at the screen may distract your attention causing a traffic accident. Be especially careful at railroad crossings, station platforms and pedestrian crossings.
- Since using the product on airplanes is restricted, follow the instructions given by the respective airlines.

■ Be Considerate of People around You

- Do not make calls in theaters, museums, libraries, and other similar places. Turn power off or turn on manner mode so as not to disturb others around you with your ringtones.
- In a city area, use in a place where you do not bother people walking.
- It is extremely dangerous to walk while looking at the screen of the cell phone. Do not suddenly stop to talk on/operate the cell phone or do so while walking.
- Move to a place where you do not disturb others while you are in shinkansen, a hotel lobby, etc.
- Be careful not to be loud while talking.
- Be careful of sound leakage from earphones in trains or other places with many people around you.
- Ask permission if you take photos with your cell phone camera.
- When using the camera, follow common rules of etiquette regarding camera use.
- There may be a person with a cardiac pacemaker nearby at a place filled with people such as in a crowded train. Turn on "Airplane mode" or turn the cell phone off in such places.
- When a medical institution has laid down designated areas where use of the product is prohibited or is not allowed to be brought in, abide by the instructions of that medical institution.

Appendix

Updating Software

You can update the product to the most recent software for optimal performance and to get the latest enhancements.

There are several methods to update the software.

- Use this product to download and update the software.
- Use Wi-Fi® functions of this product to download and update the software.

■ Notes on Software Update

- You are charged for data communication when connecting to the Internet from the product using data communication. Especially for OS update, large data communication occurs. You are recommended to use Wi-Fi®.
- When software update is necessary, you will be informed on au homepage, etc. For details, contact an au shop or Customer Service Center (call toll-free 157). In addition, users of the product will receive a notice from au, when software update is necessary to improve the functionality of the product.
- It is recommended to back up your data before updating software.
- For details, refer to the au homepage.

- Fully charge before update. If the update is started with the battery power low or battery power becomes low during update, software update cannot be done.
- Check out the signal reception status. The software update may fail if the product is in a place with bad signal reception status.
- Any operations are not available during software update. Calling 110 (Police), 119 (Fire/Ambulance), 118 (Maritime rescue) is not available. Alarm does not work, either.
- If software update has failed or stopped, perform the same procedure again.
- Update is unavailable during international roaming.
- If the software update fails, it may become impossible to operate the product. If this happens, bring it to an au shop or PiPit (not accepted by some shops).
- Any operations are not available during software update. Calling 110 (Police), 119 (Fire/Ambulance), 118 (Maritime rescue) and 157 (Customer Service Center) is not available. Alarm does not work, either.

Downloading Software into the Product to Update

Downloading updated software via the Internet directly from the product is available.

1 Home screen → [基本機能 (Basic Function)] → [Settings] → [About phone] → [Software update]

From here on, follow the on-screen instructions.




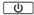

memo

- ◎ Note that depending on the terms of your subscription contract, communication charges may be incurred for the product to automatically search for available networks.
- ◎ After a software/OS update, the product cannot revert to the previous version software.

Troubleshooting

Before you assume that the product is malfunctioning, confirm the following contents and perform "トラブル診断" in "故障受付" app.

Home screen → [au Supports] → [故障紛失サポート (Repair and Delivery Service)] → [トラブル診断 (Trouble diagnosis)] (Displayed language is Japanese only)

Trouble	Detail	Page
Cannot turn on power	Is the internal battery charged?	P.14
	Is  (Power button) pressed and held until the incoming light turns on?	P.17
Cannot charge the product	Is the specified charger (sold separately) correctly used for charging?	P.15
	Is the product at a high or low temperature? The product may stop charging depending on a temperature.	P.14
	Is the specified accessory (adapter etc.) used for charging?	P.15
Cannot operate/ The screen does not respond/ Cannot turn off the power	Press and hold  (Power button) and  (Volume up key) at the same time for at least 11 seconds.	P.17
The power is turned off automatically	Is the internal battery adequately charged?	P.14
The power is turned off while the wake-up logo is displayed	Is the internal battery adequately charged?	P.14
Cannot make calls	Is the power turned on?	P.17
	Is the au IC card inserted?	P.9

Trouble	Detail	Page
Cannot receive calls	Is the signal good enough?	P.25
	Is the product within the service area?	P.25
	Is the power turned on?	P.17
	Is the au IC card inserted?	P.9
"No signal" (out of service area) appears	Is the product within the service area or where signal is good enough?	P.25
	Is the built-in antenna covered with finger, etc.?	P.7
	Is a card inserted other than the au IC card?	P.9
Cannot operate button/touch panel	Is the power turned on?	P.17
	Turn off the power and then turn it on again.	P.17
"No card" appears	Is the au IC card inserted?	P.9
A message indicating that charging is necessary is displayed	The battery is almost empty.	P.14

Trouble	Detail	Page
The battery can only be used a short time	Is the battery adequately charged? • Charge until the red charging indicator turns green.	P.14
	Does the internal battery have adequate service life remaining?	P.46
	Is the product left in the place for a long period where "No signal" (out of service area) appears?	P.25
	Stop using/disabling unused apps or functions.	—
When making a call, there is a busy signal and the call does not connect	Is the product within the service area or where signal is good enough?	P.25
	The wireless line is extremely busy or the party is calling. Retry later.	—
Display is dark	Is the temperature of the product or battery high? The display may become dark depending on the temperature of the product.	—
Cannot hear/hard to hear the other party's voice	Place your ear hole to the receiver.	P.6 P.8
Settings made for specified contacts do not work	Is the caller ID notified? If the caller does not notify the caller ID, ringtone setting in Contacts is not effective. Group's incoming settings in Contacts is not effective, either.	—

If you cannot find the solution to your problem in the above items, refer to the au Customer Support site "トラブル診断 (Trouble check)" on the website shown below. (Displayed language is Japanese only.)

<https://www.au.com/trouble-check/>

After-Sales Service

When Asking for Repair

For repair, contact Repair and Delivery Service Center.

During the warranty period	Repairs will be done based on the terms of services of the free-of-charge repair warranty.
Outside the warranty period	We shall repair the product for a charge as requested by the customer if repair renders it usable.

* The warranty period is one year from the day when you purchase the product.



memo

- ◎ Before handing the product for repair, make a backup of the contents of memory since they may disappear during repair. Note that the Company shall not be liable for any damages and loss of income should the contents of memory be altered or lost.
- ◎ Recycled parts that meet the Company's quality standards are sometimes used for repair.
- ◎ au cell phones collected by Replacement cell phone delivery service which you used before are recycled to cell phones for replacement after repairs. Also parts replaced by au after-sales service are collected and recycled by the Company. They are not returned to customers.
- ◎ For the products that are processed, modified, analyzed (including altering the software, analyzing (including rooting), reverse-engineering, decompiling, or disassembling), or repaired by repair offices other than the company specified, they are not covered by the warranty or repair may be refused.
- ◎ The battery built into the product is not covered by the free-of-charge repair warranty except for events arising from defects in battery materials and manufacturing.

■ Performance Parts for Repair

The Company retains performance parts for repair of the product main unit and its peripherals for 4 years after discontinuation of production. Performance parts for repair refers to parts required for maintaining the functions of the product.

■ Terms of Services of Free-of-Charge Repair Warranty

1. When you apply for repair, inform us of your serial number (IMEI number). You can check the main unit or the sticker attached on the packaging box for the serial number (IMEI number).
2. Repairs will be done based on the terms of services of the free-of-charge repair warranty when the product is used correctly based on the instruction manual and the product is malfunctioning.
3. Repairs will be charged in the following cases even during the warranty period. (Also, the product cannot be repaired in some cases.)
 - ① When the product is not used correctly based on the instruction manual.
 - ② When the product is malfunctioning or damaged due to modification and repair.
 - ③ When the product is repaired by repair offices other than the company specified.
 - ④ When the product is malfunctioning or damaged due to a handling fault or accident. Or when there are some traces that the product is damaged by falling, water or humidity.
 - ⑤

When the product is malfunctioning or damaged due to earthquakes, storms, floods or other natural disasters, as well as fires, salt, abnormal voltage, etc.

4. Repairs may be refused depending on the damage condition of devices.
5. Note that the company shall not be liable for any damages and loss arising from the product malfunction.
6. The Company assumes no responsibility for any accidents when the product is connected with an unspecified device.
7. On-site repair is not available.
8. This warranty is valid only in Japan.

* The warranty guarantees that free-of-charge repairs will be done based on the terms of period and conditions indicated above. Therefore, the warranty does not limit your legal rights against persons in charge of the warranty and other operators.

■ Repair and Delivery Service

An after-sales service membership program on a monthly basis called "Repair and Delivery Service" (monthly fee: 380 yen, tax excluded) is available for using your au cell phone for a long time without worries. This service expands coverage for many troubles including malfunction, theft and loss.

For details of this service, check on the au homepage or contact Repair and Delivery Service Center.

memo

- ◎ You can apply for membership only at the time of purchasing your au cell phone.
- ◎ Once you cancel the membership, you cannot reapply for it until you purchase an au cell phone next time.
- ◎ Note that when changing the model or purchasing an extra cell phone, this service only covers the most recently purchased au cell phone.
- ◎ When an au cell phone is handed over to you or someone else, the Repair and Delivery Service membership is also handed over to the successor of the cell phone.
- ◎ When you get a new au cell phone by changing the model, purchasing an extra cell phone, etc., the "Repair and Delivery Service" membership for the old au cell phone is automatically canceled.
- ◎ Service contents are subject to change without notice.

■ au IC Card

The au IC card is lent to you by au. In case of loss or damage, the card will be replaced at your expense. When malfunction is suspected, or in case of theft or loss, contact an au shop or PiPit.

■ au After-Sales Service Information

Service contents			Repair and Delivery Service	
			Member	Non-member
Replacement cell phone delivery service	Spontaneous failure	1st year	Free	N/A
		2nd year and later	Refer to the table of the service charge in "Replacement cell phone delivery service" (Member) service charge.	
	Partial damage, water soak, irreparable damage, theft and loss			

Service contents			Repair and Delivery Service	
			Member	Non-member
Holding over and repair	Spontaneous failure	1st year	Free	Free
		2nd year and later	Free of charge (three-year warranty)	Actual cost
	Partial damage		Customer charge Upper limit 5,000 yen	
	Water soak and irreparable damage		Customer charge 10,000 yen	
	Theft and loss		N/A	N/A (By model replacement)

Charge amounts are all tax excluded

■ "Replacement Cell Phone Delivery Service" (Member) Service Charge

Applicable condition	1st	2nd
Normal	5,000 yen/ Long Benefit ^{*1} 3,000 yen	8,000 yen/ Long Benefit ^{*1} 6,000 yen
Applied both "WEB割引" (Discount for web app) ^{*2} /"代用機なし割引" (Discount for nonuse of substitute) ^{*3}	4,000 yen/ Long Benefit ^{*1} 2,000 yen	7,000 yen/ Long Benefit ^{*1} 5,000 yen
Applied only "代用機なし割引" (Discount for nonuse of substitute) ^{*3}	4,500 yen/ Long Benefit ^{*1} 2,500 yen	7,500 yen/ Long Benefit ^{*1} 5,500 yen

Charge amounts are all tax excluded

- ^{*1} Customers in 3rd year (25 months) of subscription or all subscription lines in a family discount plan to which the customer belongs are eligible. Customers using a data communication device or tablet are eligible if they are subscribing to a set discount plan (WIN Single Set Discount Service or Smartphone Set Discount) and the subscription for the line covered under the set discount is in its 3rd year.
- ^{*2} WEB割引 (Discount for web app): If you apply "交換用携帯電話機お届けサービス (Replacement mobile phone delivery service)" from the au homepage, 500 yen will be discounted from service charge. "代用機なし割引" (Discount for nonuse of substitute) is applied automatically as the substitution is not available for "WEB割引 (Discount for web app)".
- ^{*3} 代用機なし割引 (Discount for nonuse of substitute): If you do not use the substitution when using "交換用携帯電話機お届けサービス" (Replacement mobile phone delivery service), 500 yen will be discounted from service charge.
For details, refer to au homepage.

Online Replacement Service (available 24 hours a day) (Japanese)

* From the PCs and smartphones only

<https://www.au.com/support/service/mobile/trouble/repair/application/>



memo

Replacement cell phone delivery service

◎ If you have a problem with your au cell phone, call us to have a replacement one (of the same model and color) delivered to your specified address. Please return your old faulty au cell phone within 14 days after the cell phone for replacement is delivered to you.

* If a same-model/-color cell phone cannot be provided, a cell phone for replacement will be provided in a model and color that we specify.

◎ You can use this service up to twice within one year starting from the day when you first use this service. If you have not used this service over the past one year at the time of your application for this service, the application will be regarded as your first time. If you have, the application will be regarded as your second time.

* For details, refer to au homepage.

Holding over and repair

◎ Damages and malfunctions intentionally caused by the customer as well as those due to modification (e.g. disassembly, change of parts, painting, etc.) by the customer are not covered by this service.

◎ You cannot receive a refund for replacement of the outer casing due to stains, scratches, paint removal, etc. on the outer casing.

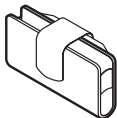
SIM Unlock

This product can be SIM-unlocked. SIM-unlocking the product allows other-carrier SIM cards to be used with it.

- Requests can be made for SIM-unlocking on the au homepage or at an au shop.
- When using non-au SIM card, some services, functions, etc. may be unavailable. The Company is not liable for any operations.
- To set up your phone after unlocking SIM lock, from the home page, [基本機能 (Basic Function)] → [Settings] → [About phone] → [SIM card status] → [SIM STATUS UPDATE].
- For details, refer to au homepage. (Japanese)
<https://www.au.com/support/service/mobile/procedure/simcard/>

Related Accessories

- Common AC Adapter 05 (0501PWA) (sold separately)
- Common AC Adapter 03 (0301PQA) (sold separately)
- Common AC Adapter 03 Navy (0301PBA) (sold separately)
- Common AC Adapter 03 Green (0301PGA) (sold separately)
- Common AC Adapter 03 Pink (0301PPA) (sold separately)
- Common AC Adapter 03 Blue (0301PLA) (sold separately)
- AC Adapter JUPITRIS (White) (L02P001W) (sold separately)
- AC Adapter JUPITRIS (Red) (L02P001R) (sold separately)
- AC Adapter JUPITRIS (Blue) (L02P001L) (sold separately)
- AC Adapter JUPITRIS (Pink) (L02P001P) (sold separately)
- AC Adapter JUPITRIS (Champagne) (L02P001N) (sold separately)
- au Carrying Case G Black (0106FCA) (sold separately)



- au Carrying Case H Black (0107FCA) (sold separately)
- Portable charger 02 (0301PFA) (sold separately)
- microUSB cable 01 (0301HVA) (sold separately)
- microUSB cable 01 Navy (0301HBA) (sold separately)
- microUSB cable 01 Green (0301HGA) (sold separately)
- microUSB cable 01 Pink (0301HPA) (sold separately)
- microUSB cable 01 Blue (0301HLA) (sold separately)



memo

- ◎ The product may not be fully charged with Portable charger 02 (sold separately).
- ◎ Accessories can be purchased from au online shop.
<http://auonlineshop.kddi.com>

Main Specifications

■ Main Unit

Display	Approx. 5.0 inches, approx. 16.77 million colors, Transparent TFT	
	1,280 × 720 dots (HD)	
Weight	Approx. 139g	
Dimensions (W × H × D)	Approx. 73 × 146 × 8.9mm (thickest part 9.2 mm)	
Internal memory ¹⁾		ROM: Approx. 16 GB RAM: Approx. 2 GB
Continuous call time	In Japan	Approx. 1,300 minutes
	Overseas (GSM/UMTS/LTE)	Approx. 730 minutes
Continuous standby time	In Japan	Approx. 650 hours
	Overseas (GSM/UMTS/LTE)	Approx. 790 hours
Continuous tethering time	Approx. 730 minutes	
Maximum number of Wi-Fi tethering connection devices	10 devices	
Charging times (estimate)	Common AC Adapter 05 (sold separately)	Approx. 150 minutes
Camera image pixel		CMOS
Effective out-camera pixels		Approx. 13 million pixels
Effective in-camera pixels		Approx. 5 million pixels

Wireless LAN (Wi-Fi [®]) function		IEEE802.11a/b/g/n/ac compatible
Bluetooth [®] function	Compatible version	Bluetooth [®] standards Ver.4.2 compatible ²⁾
	Output	Bluetooth [®] standards Class 1
	Communication range ³⁾	Within 10 m with no obstacles in the range
	Supported Bluetooth profile ⁴⁾	GATT (Generic Attribute Profile) SPP (Serial Port Profile) A2DP (Advanced Audio Distribution Profile) AVRCP (Audio/Video Remote Control Profile) HSP (Headset Profile) HFP (Hands-Free Profile) OPP (Object Push Profile) PBAP (Phone Book Access Profile) HID (Human Interface Device Profile) PAN (Personal Area Networking Profile) PAN-NAP (Personal Area Networking-Network Access Point) PAN USER (Personal Area Networking-User) HOGP (HID over GATT Profile) Bluetooth SSP MAP (Message Access Profile) DUN (Dial-Up Networking Profile) ⁵⁾
	Frequency bands	2.4GHz band

- *1 Since the storage is shared by data and apps, storage space may be reduced depending on the usage of apps.
- *2 It is confirmed that the product and all Bluetooth® devices are compliant with Bluetooth® standards designated by Bluetooth SIG, and they are authenticated. However, procedures may differ or data transfer may not be possible depending on the device's characteristics or specifications.
- *3 It changes according to objects obstructing devices and signal reception.
- *4 Specifications provided in Bluetooth® standards for making communication between Bluetooth®-compatible devices in accordance with their intended use.
- *5 Supported for some car navigation systems only. See the au homepage for usage.



memo

- ◎ The continuous talk time and continuous standby time may drop to less than half depending on the battery charging status, usage environment such as temperature, reception condition at the location where the product is used, and the function settings.

Specific Absorption Rate (SAR) of Cell Phones

This model Qua phone QX cell phone complies with Japanese technical regulations for exposure to radio waves and international guidelines on radio wave protection.

This cell phone has been designed in observance of the Japanese technical regulations regarding exposure to radio waves ^(*) and limits to exposure to radio waves recommended by equivalent international guidelines. These international guidelines were set out by the International Commission on Non-Ionizing Radiation Protection (ICNIRP), which is in collaboration with the World Health Organization (WHO), and the permissible limits include a substantial safety margin designed to assure the safety of all persons, regardless of age and health condition.

The Japanese technical regulations and international guidelines define the limits using a unit of measurement known as the Specific Absorption Rate (SAR), which represents the average amount of radio frequency energy absorbed by the human body. The SAR limit for cell phones is 2.0 W/kg. The highest SAR value for this cell phone when tested for use at the ear is 0.685W/kg^(*). The highest SAR value for this cell phone when tested for use on the body is 0.543W/kg^(*). There may be slight differences in SAR levels among individual products, but they all satisfy the limit.

The actual SAR of this cell phone while talking on the

phone can be well below that indicated above. This is due to automatic changes in the power level of the cell phone to ensure it only outputs the minimum power required to communicate with a base station. Therefore in general, the closer you are to a base station, the lower the power output of the cell phone is.

This cell phone can be used in positions other than against your head. Use a carrying case or similar accessory that holds the phone at least 1.5 cm separated from the body and ensure no metal parts are located between you and the cell phone. Under these conditions, this cell phone satisfies Japanese technical regulations and international guidelines for radio wave protection.

The World Health Organization has stated that "a large number of studies have been performed over the last two decades to assess whether mobile phones pose a potential health risk. To date, no adverse health effects have been established as being caused by mobile phone use". .

If you would like to know more detailed information, please refer to the WHO website.

http://www.who.int/docstore/peh-emf/publications/facts_press/fact_english.htm

*1 Technical regulations are defined by the Ministerial Ordinance Related to Radio Law (Article 14-2 of Radio Equipment Regulations).

*2 This includes the wireless function that can be used simultaneously.

Please refer to the websites listed below if you would like to know more detailed information regarding SAR.

-
- Ministry of Internal Affairs and Communications website
<http://www.tele.soumu.go.jp/e/sys/ele/index.htm>
 - Association of Radio Industries and Businesses website
<http://www.arib-emf.org/01denpa/denpa02-02.html>
 - au homepage
<https://www.au.com/english/>
-

For the following content, refer to the "取扱説明書詳細版 (Full Instruction Manual)" (Japanese) available on the au homepage or the Basic Manual app installed on the product.

-
- FCC Notice
 - OpenSSL License

From your PC:

<https://www.au.com/support/service/mobile/guide/manual/>

Export Administration Regulations

This product and its accessories may be subject to the Japan Export Administration Regulations ("Foreign Exchange and Foreign Trade Law" and its related laws). In addition, U.S. Re-export Regulations (Export Administration Regulations and the related laws and regulations) may apply to this product and its accessories. To export and re-export this product and its accessories take the required measures on your responsibility and at your expenses. For details on the procedures, contact the Ministry of Economy, Trade and Industry, the U.S. Department of Commerce.

Intellectual Property Rights

Trademarks

Company names and product names referred to in this manual are trademarks or registered trademarks of the respective companies.



Google and Google logo, Android and Android logo, Google Play and Google Play logo, Play Music and Play Music logo, Play Movies & TV and Play Movies & TV logo, Gmail and Gmail logo, Google Maps and Google Maps logo, Google Drive and Google Drive logo, Google Maps Navigation and Google Maps Navigation logo, Google Chrome and Google Chrome logo, Google Voice Search and Google Voice Search logo, YouTube and YouTube logo are trademarks or registered trademarks of Google, Inc.

Microsoft®, Windows® and Windows® 7/Windows® 8.1/Windows® 10 are registered trademarks of Microsoft Corporation in the U.S.A. and other countries.

The official name for Microsoft® Windows® is Microsoft® Windows® Operating System.

Microsoft®, Microsoft® Excel®, Microsoft® PowerPoint®,

Windows Media®, and Exchange® are trademarks or registered trademarks of Microsoft Corporation in the United States and other countries.

Microsoft® Word and Microsoft® Office are product names of Microsoft Corporation in the United States.

QR code is a registered trademark of DENSO WAVE INCORPORATED.

microSD, microSDHC and microSDXC logos are trademarks of SD-3C, LLC.

Bluetooth® and logo are registered trademarks owned by the Bluetooth SIG, Inc., and KYOCERA Corporation is licensed to use those trademarks.

WiMAX is a trademark of WiMAX Forum.

Wi-Fi®, WPA®, Wi-Fi CERTIFIED logo, Wi-Fi Protected Setup logo, Wi-Fi Direct®, and Miracast® are registered trademarks of Wi-Fi Alliance.

Wi-Fi CERTIFIED™ and Wi-Fi Protected Setup are trademarks of Wi-Fi Alliance.

FeliCa is a contactless IC card technology developed by Sony Corporation.

FeliCa is a registered trademark of Sony Corporation.

 is a registered trademark of FeliCa Networks, Inc.

Facebook and Facebook logo are trademarks or registered trademarks of Facebook, Inc.

Twitter and Twitter logo are trademarks of Twitter, Inc., and are used under license.

Instagram is a trademark of Instagram, LLC in the U.S. and other countries.

iWnn of OMRON SOFTWARE Co., Ltd. is used for conversion methods for Japanese language, and for phrase prediction methods for English.

iWnn IME©OMRON SOFTWARE Co., Ltd. 2009-2017 All Rights Reserved.

THIS PRODUCT IS LICENSED UNDER THE MPEG-4 VISUAL PATENT PORTFOLIO LICENSE FOR THE PERSONAL AND NON-COMMERCIAL USE OF A CONSUMER FOR (i) ENCODING VIDEO IN COMPLIANCE WITH THE MPEG-4 VISUAL STANDARD ("MPEG-4 VIDEO") AND/OR (ii) DECODING MPEG-4 VIDEO THAT WAS ENCODED BY A CONSUMER ENGAGED IN A PERSONAL AND NONCOMMERCIAL ACTIVITY AND/OR WAS OBTAINED FROM A VIDEO PROVIDER LICENSED BY MPEG LA TO PROVIDE MPEG-4 VIDEO. NO LICENSE IS GRANTED OR SHALL BE IMPLIED FOR ANY OTHER USE. ADDITIONAL INFORMATION INCLUDING THAT RELATING TO PROMOTIONAL, INTERNAL AND COMMERCIAL USES AND LICENSING MAY BE OBTAINED FROM MPEG LA, LLC. SEE [HTTP://WWW.MPEGLA.COM](http://WWW.MPEGLA.COM).

- (1) ACCESS, the ACCESS logo, and NetFront are registered trademarks or trademarks of ACCESS CO., LTD. in the United States, Japan and/or other countries.
- (2) This software is based in part on the work of the Independent JPEG Group.

"SMART SONIC RECEIVER", "Daily Step" are registered trademarks of KYOCERA Corporation.

"もじチェン" by LIM Corporation LTD. is used for switching font. "もじチェン" is a registered trademark of LIM Corporation LTD. The product contains fonts provided by LIM Corporation LTD. The product contains fonts provided by Morisawa Inc.

The product is equipped with DeepCore® 3.0 Plus for Android by E-Globaleedge Corporation as infrared communication function. Copyright © 2012 E-Globaleedge Corp. All Rights Reserved.

"PhotoSolid", the function to avoid blurring still images, is a product of Morpho, Inc. "PhotoSolid" is a registered trade mark of Morpho, Inc.

"MovieSolid", the function to avoid blurring videos, is a product of Morpho, Inc. "MovieSolid" is a registered trade mark of Morpho, Inc.

"PhotoScouter", the scene detection technology, is a product of Morpho, Inc. "PhotoScouter" is a registered trade mark of Morpho, Inc.

"Morpho Rapid Effect", the image effect technology, is a product of Morpho, Inc. "Morpho Rapid Effect" is a trademark of Morpho, Inc.

Morpho HDR is adopted for HDR (High Dynamic Range) technology. "Morpho HDR" is a trademark of Morpho, Inc.

All other company names and product names are trademarks or registered trademarks of respective companies.

License

Users of the product are authorized to use software installed into the product described in this instruction manual. Pay attention to the following points when using the software.

- (a) The software installed on this product or part of it may not be altered, delivered, modified, analyzed, reverse-engineered, derived, and any such actions are prohibited.
- (b) Illegally importing the software or a part of it is prohibited.
- (c) This Software is provided without implied warranties of merchantability, fitness for a particular purpose and noninfringement of third party rights.

Note that the existing license agreement takes priority for usage of GNU General Public License (GPL), GNU Library/Lesser General Public License (LGPL) included in software, software based on other open source software license and software that KYOCERA Corporation is licensed.

For information on the Open source software, refer to "Open Source Software" as follows;

■ Open Source Software

Note that the existing license agreement takes priority for usage of GNU General Public License (GPL), GNU Library/Lesser General Public License (LGPL) included in software, software based on other open source software license and software that KYOCERA Corporation is licensed. The exact terms of GPL, LGPL and some other licenses are reproduced in "About phone" in this product. For details, refer to KYOCERA homepage.

This product includes software copyrighted by KYOCERA Corporation and licensed software.

Copyright of the software designed and developed complying with the open source software standard belongs to KYOCERA Corporation or the third parties, distribution, reproduction, transformation and transmission over public lines without consent of KYOCERA Corporation are prohibited, unless you are authorized or permitted by Copyright Law.

■ Recording Diagnosis and Usage Condition Data

KYOCERA Corporation asks for users' cooperation in order to improve the quality of products and services. KYOCERA Corporation records and saves data of failure diagnosis and the usage conditions (application usage by users, log related to error, detail information of application usage by users (specified functions, usage frequency, memory/battery status)) in the product in order to track and cope with diagnosis events such as unexpected shutdown or system error for the purpose of improvement of quality and services. Those information may be collected upon repair request by user after obtaining the user agreement.

For inquiries, call:

Customer Service Center



For general, charge, operations (toll free)

Business hours 9:00 to 20:00 (7 days a week)

From fixed-line phones: | From au cell phones:
 0077-7-111 | 157 area code not required

Pressing "zero" will connect you to an operator,
after calling "157" on your au cellphone.

In case above numbers are not available (for free),

 0120-977-033 (except Okinawa)
 0120-977-699 (Okinawa)

For service canceling procedure
in case of loss or theft (toll free)

Business hours 24-hour (7 days a week)

From fixed-line phones: | From au cell phones:
 0077-7-113 | 113 area code not required

In case above numbers are not available (for free),

 0120-925-314

Repair and Delivery Service Center

For loss, theft or damage (toll free)

Business hours 9:00 to 20:00 (7 days a week)

From fixed-line phones/au cell phones,

 0120-925-919



やめましょう、
歩きスマホ。




キケン！
水ぬれ充電

濡れた状態での充電は、
異常な発熱・焼損などの原因となり
大変危険です。



モバイル・リサイクル・ネットワーク
携帯電話・PHSのリサイクルにご協力を。

Cell phone and PHS operators collect and recycle unused
telephones, batteries and battery chargers at stores
bearing the  logo regardless of brand and manufacturer
to protect the environment and reuse valuable resources.

July 2017, 1st Edition

Sales: KDDI CORPORATION • OKINAWA CELLULAR TELEPHONE COMPANY

Manufactured by: KYOCERA Corporation