



Basic Manual

miraie*f*

Contents

Safety Precautions

Getting Ready

Basic Operation

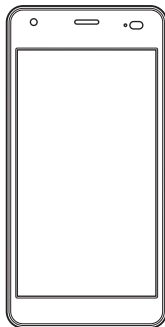
Appendix

Preface

Thank you for buying the "miraie f (miraie forte)" (simply called the "product" or "main unit" from here on). Before using the product, be sure to read the "Basic Manual" (this manual) to ensure correct use. After you have finished reading this PDF and the printed manuals, be sure to store them in safe places so that you can retrieve them whenever needed.

List of Packaged Items

Before you start using the product, make sure that you have all the following packaged with the product.



Main unit



**IC card cover/tray tool
(complimentary sample)**

- ご利用にあたっての注意事項 (Notes on Usage) (Japanese)
- クイックスタートガイド (Quick Start Guide) (Japanese)

The following items are not included in the package.

- | | |
|-----------------------|------------------|
| • microSD memory card | • microUSB cable |
| • AC adapter | • Earphones |



memo

- ◎ Purchase the specified charging equipment (sold separately).
- ◎ The battery is built into the product.
- ◎ The illustrations of cell phone in the manual are used only for explaining. They may differ from the actual product.

About Operating Instructions

■ "Basic Manual" (This manual)

Handles only basic operations for main features.

- Company names and product names referred to in this manual are trademarks or registered trademarks of respective companies.

■ "クイックスタートガイド (Quick Start Guide)" (Japanese Only)

Describes main functions required for use by a child and items to be set by a parent or guardian before letting a child use the product.

■ "取扱説明書 詳細版 (Full Instruction Manual)" (Japanese Only)

You can check the "取扱説明書 詳細版 (Full Instruction Manual)" (Japanese only) on the au homepage for more detailed descriptions of different functions.

<http://www.au.kddi.com/support/mobile/guide/manual/>

■ "取扱説明書 WEB版 (Web-Edition Instruction Manual)" (Japanese Only)

You can check the "取扱説明書 WEB版" at the following link.

<http://www.au.kddi.com/support/mobile/guide/manual/>

You can also check at the following link.

http://www.kyocera.co.jp/prdct/telecom/consumer/kyv39/parents/index.html?utm_source=boxqr&utm_medium=kyv39



■ "使い方ガイド (Usage Guides)" (Japanese Only)

"Usage Guides" are the "使い方ガイド(お子様用) (Usage Guide (Child))" and "使い方ガイド(保護者用) (Usage Guide (Parent/Guardian))".

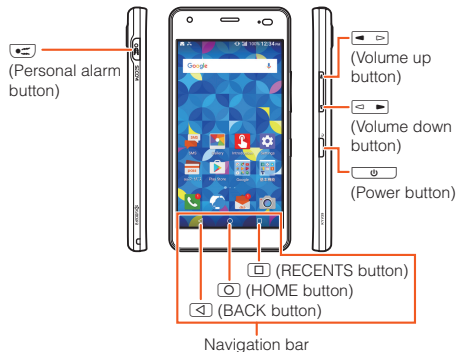
In the "使い方ガイド(お子様用)", you can check operation of main product functions.

In the "使い方ガイド(保護者用)", you can check how to make settings before letting a child use the product, how to make parental settings, etc.

Regarding notations used in this document

■ Note on button illustrations

In this manual, buttons are represented by simplified illustrations as shown below.



■ Description of Operations for Selecting Item/Icon/Button etc.

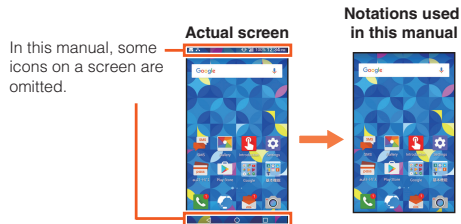
The notations used for operation procedures in this manual are as follows.

Tap onscreen buttons and icons to select them by touching them lightly (►P.72).

Description	Explanation
On the Home screen → [Phone] → [1][4][1] → [Phone]	Tap "Phone" at the bottom of the Home screen. And tap "1", "4", "1", then tap "Phone" at the end.
In sleep mode, [Sleep mode button]	In sleep mode, press [Sleep mode button].
On the Home screen → [Parental settings]	Click the Home screen left/right to display "Parental settings", then tap "Parental settings".

■ Notes on illustrations/Screenshots

This manual gives screen displays and operation for the product with an au Nano IC Card 04 installed.



memo

- In this manual, screenshots for body color "meteor blue" are provided as examples.
- Operations from the vertical display are mainly described. Menu items/icons/buttons on a screen may be different from the ones in the horizontal display.
- Menu items/layers/icons may be different depending on functions, conditions, etc.
- Illustrations and screens shown in this manual may look different from the actual product/screens. In some cases, a portion of a screen, etc. may be omitted.
- In this manual, "au Nano IC Card 04" is described as "au IC Card".

- © In this manual, "microSD™ memory card (commercially available)" and "microSDHC™ memory card (commercially available)" are abbreviated as "microSD memory card" or "microSD".
- © All of the indicated amounts exclude tax unless otherwise specified.
- © Company names and product names in this manual are trademarks or registered trademarks of the respective companies. TM and © marks may also be omitted in some instances.

When using the product

- Before using the product, read the "Safety Precautions" in this manual to ensure correct usage.
- If the product seems to be malfunctioning, first complete the "トラブル診断 (Troubleshooting)" (Japanese).
On the Home screen → [au Supports] → [故障受付 (Repair Receipt App)] → [トラブル診断 (Troubleshooting)]
 Or, you can check symptoms with the au Customer Support "トラブル診断 (Troubleshooting)" on the au homepage (Japanese).
<http://cs.kddi.com/support/komatta/kosho/trouble/>
- Communication is not possible even inside the service area in places where the signal does not reach (e.g. tunnels and basements). Also, communication is sometimes not possible in poor reception areas. Communication is sometimes interrupted if you move into a poor reception areas during communications.

- Since this product uses radio waves, the possibility of communication intercepts by third parties cannot be eliminated. (Though LTE/WiMAX 2+ system has highly secure confidential communication features.)
- VoLTE (LTE network) by au is used when connecting with emergency responding organizations within Japan. You cannot connect using 3G (circuit-switched network).
- This Product is designed for use in Japan only and cannot be used in any other country.
- Since this product is a radio station under the Radio Law, you may be asked to temporarily submit the product for inspection in accordance with the Radio Law.
- IMEI information of your cell phone is automatically sent to KDDI CORPORATION for maintenance and monitoring operational status of your cell phone.
- The Company is not liable for any damages arising from earthquakes, lightning, storms, floods or other natural disasters, as well as fires, actions by third parties, other accidents, intentional or mistaken misoperation by the customer, or use under other unusual conditions outside the responsibility of the Company.
- The Company is not liable for any incidental damage (change/disappearance of described content, loss of business income, disruption of business, etc.) arising from use or inability to use the product.
- The Company is not liable for any damages arising from failure to observe the described content of this manual.

- The Company is not liable for any damages arising, for example, from malfunction caused by combination with connected devices or software not related to the Company.
- Captured image data or downloaded data may sometimes be altered or lost due to faults, repair or other handling of the product. The Company is not liable for any damage or lost income resulting from recovery of these data.
- It is recommended you keep a copy of important data on your PC's hard disk, etc. Whatever the cause of the defect or malfunction may be, the Company assumes no responsibility for alteration or loss of saved data.
- Contents saved in the product, such as contacts, mails and favorites, might be altered or lost in an accident, fault, repair or mishandling. Be sure to keep a copy of important contents. Note that Company assumes no responsibility for any damages or lost profits resulting from altered or lost contents.
- Note that content data (both charged or free content) saved with the product cannot be returned to the customer when the product is replaced for repair of a fault, for example.
- The product uses liquid crystal for its display. The display response speed may become slow when the ambient temperature is low, which is due to the property of liquid crystal and not a malfunction. Display response speed will return to normal at room temperature.
- Although the display used on the product is made using high-precision technology, some pixels (dots) might be lit or out at all times. This is not a malfunction.

- You are recommended to store copies of individual data such as photos you took, videos and music on your PC by sending each file as mail attachment, etc. Note, however, that you may not be able to make copies of any copyrighted data even by the above-mentioned means.
- Do not discard the product together with regular trash. Please cooperate in the collection of the product (and optional accessories) when it is no longer needed to protect the environment and effectively use resources. Old product is collected at au shops and other places.

* "The Company" as appears in this manual refers to the following companies:
Sold by: KDDI CORPORATION, OKINAWA CELLULAR TELEPHONE COMPANY

Manufactured by: KYOCERA Corporation

Important

- Reproduction of the content of this manual in part or in whole is prohibited.
- The content of this manual is subject to change without notice.
- Every effort has been made in the preparation of this manual. Should you notice any unclear points, omissions, etc., feel free to contact us.

Contents

Preface	ii
List of Packaged Items	ii
About Operating Instructions	1
Regarding notations used in this document	2
When using the product	4

Contents6

Safety Precautions8

Safety Precautions (Observe Strictly)	8
Handling precautions	20
Notes on water, dust, and shock resistance	26
Notes on using Bluetooth®/Wireless LAN (Wi-Fi®) function	32
Security codes/SIM PIN	34
Notes on data communication charge	36
Notes on applications	36
Cell Phone Etiquette	37

Getting Ready39

Names and functions of parts	39
au IC Card	42
Attaching/Removing a microSD memory card	46

Charging	48
Turning the power on/off	50
Making initial settings	51
Preparing the product for the child	52
Setting an au ID	57
Parental settings	57

Basic Operation72

Using the touch panel	72
Using the navigation bar	74
Using au Basic Home	74
Using applications	75
Monitoring the product's status	78
Setting Airplane mode	80
Setting Silent mode	81
Switching character entry	81
Displaying menu	81
Making a call	82
Registering a contact to Contacts and making a call ...	82
Receiving a call	84
Checking your own phone number (Profile)	84
E-mail	84
Restoring backed up e-mail	85
Using Eco Mode	86
Wireless LAN (Wi-Fi®) function	86
Using the tethering function	87
Capturing photos and video	88

Using the Gallery	88
-------------------------	----

Appendix.....90

Updating Software.....	90
How do I . . . ? Q&A.....	91
After-sales service	97
SIM-Unlocking Your au Phone.....	101
Peripheral devices.....	101
Using an earphone.....	102
Main specifications.....	102
Specific Absorption Rate of Cell Phone	104
Export Administration Regulations	105
Intellectual property rights.....	106

Safety Precautions

Safety Precautions (Observe Strictly)

- Before using this product, thoroughly read these safety precautions for proper use. After reading, store the precautions in a safe place.
- These safety precautions describe instructions that should be observed to prevent injury to a person using the product and others, and damage to property.
- The following indication categories explain the degree of injury or damage that may occur if the indicated instructions are not observed and the product is used incorrectly.



DANGER

This indicates the potential and imminent danger of death or serious injury*¹ to a person if the product is used incorrectly.



WARNING

This indicates the possibility of death or serious injury*¹ to a person if the product is used incorrectly.



CAUTION






This indicates the possibility of minor injury*² or property damage*³ if the product is used incorrectly.

*1 Serious injury: This refers to loss of sight, injury, burns (high- and low-temperature), electric shock, broken bones, poisoning, etc. with aftereffects requiring hospital admission or long term hospital attendance as an outpatient for treatment.

*2 Minor injury: This refers to injuries, burns (high- and low-temperature), electric shock, etc. that do not require hospital admission for treatment or long-term hospital attendance as an outpatient.

*3 Physical damage: This refers to extended damage to buildings and furniture as well as livestock, pets, etc.

■ Explanation of prohibited/compulsory action symbols

	Indicates an action that is not allowed.
	Indicates that disassembly is not allowed.
	Indicates that use in a place where the product is likely to get wet or allowing the product to get wet is not allowed.
	Indicates that handling with wet hands is not allowed.
	Indicates compulsory action (must be done) based on the instructions.
	Indicates that the power plug must be disconnected from the power outlet.

■ Main unit, internal battery, charging equipment, au IC Card, peripheral devices

DANGER



Do not use, store or leave in hot places or where heat collects (e.g. by the fire, near a heater, under a blanket or kotatsu-type blanket table, in direct sunlight, in a car in the hot sun).

Doing so might cause fire, burns, injury, electric shock, etc.



Do not place in or leave near a microwave oven, induction cooker or other cooking appliance, pressure cooker, etc.

Doing so might cause fire, burns, injury, electric shock, etc.



Do not expose to or place directly on sand, dirt, mud, etc. Do not handle if hands are soiled.

Doing so might cause fire, burns, injury, electric shock, etc.

Refer to the following for product water/dust resistance.

► P.26 "Notes on water, dust, and shock resistance"



Do not charge if wet from water or other liquid (beverage, sweat, seawater, pet urine, etc.).

Doing so might cause fire, burns, injury, electric shock, etc.

Refer to the following for product water resistance.

► P.26 "Notes on water, dust, and shock resistance"



Do not disassemble or modify.

Doing so might cause fire, burns, injury, electric shock, etc.



Do not expose to water or other liquid (beverage, sweat, seawater, pet urine, etc.)

Doing so might cause fire, burns, injury, electric shock, etc.

Refer to the following for product water resistance.

► P.26 "Notes on water, dust, and shock resistance"



Do not allow water or other liquid (beverage, sweat, seawater, pet urine, etc.) to enter the earphone microphone terminal or external connection terminal.

Doing so might cause fire, burns, injury, electric shock, etc.

Refer to the following for product water resistance.

► P.26 "Notes on water, dust, and shock resistance"



Use au-specified optional accessories.

Not doing so might cause fire, burns, injury, electric shock, etc.



Product battery is built in and cannot be replaced by the customer.

Inquire at an au shop or the Customer Service Center for battery replacement.



WARNING



Do not drop, step on, throw, or otherwise subject to excessive impact or vibration.

Doing so might cause fire, burns, injury, electric shock, etc.



Do not allow conductive objects (anything metal, pencil lead, etc.) to come in contact with the earphone microphone terminal or the external connection terminal, or allow dust to enter them.

Doing so might cause fire, burns, injury, electric shock, etc.



Do not cover or wrap in blanket, etc. while using or charging.

Doing so might cause fire, burns, etc.



If charging does not complete with the specified time, discontinue charging.

Overcharging, etc. might cause fire, burns, injury, etc.



Always turn product off and discontinue charging before entering a service station, etc. where there may be flammable gas or fine particulates.

Use where there is flammable gas, etc. might cause an explosion, fire, etc.



If there is any odor, unusual noise, smoke, overheating, discoloration, deformation, etc. while using, charging, or storing the product, perform the following.

- Unplug the power plug from its outlet.
 - Completely turn the product off (► P.50).
- Not doing the above might cause fire, burns, injury, electric shock, etc.



CAUTION



Do not use if damaged.

Doing so might cause fire, burns, injury, etc.



Do not place on a wobbly table, slanted surface, or other unstable location, especially if the product is set to vibrate.

Doing so might cause product, etc. to fall, injury, etc.



Do not use or store in a humid, dusty, or high-temperature location.

Doing so may cause fire, burns, electric shock, etc.

Refer to the following for product water/dust resistance.

► P.26 "Notes on water, dust, and shock resistance"



If a child is going to use the product, a parent or guardian should instruct them how to use it and not allow incorrect usage.

Not doing so might cause injury.



Do not leave in the reach of infants.

Doing so might allow them to swallow product, etc., or cause injury, electric shock, etc.



Product may become hot if used continuously for a long period or while charging. Be careful not to unintentionally have contact with the product for a long period (fall asleep, etc.).

Product and specified charging equipment (sold separately) may become hot if used for a long period (using applications, calling, using data, watching videos, etc.) or while charging. Direct contact where hot for a long period might cause redness, itching, rash, low-temperature burns, etc. depending on the customer's constitution and health.

■ Main unit



DANGER



Do not dispose of in fire or subject to heat.

Doing so might cause the internal battery to ignite, rupture, overheat, or leak, causing fire, burns, injury, etc.



Do not pierce the main unit with a nail or other sharp object, hit it with a hammer or other hard object, step on it, or otherwise subject to excessive force.

Doing so might cause the internal battery to ignite, rupture, overheat, or leak, causing fire, burns, injury, etc.



If matter, etc. from internal battery gets in eyes, immediately rinse with clean water without rubbing, and promptly see medical attention.


Matter, etc. from internal battery might cause blindness, affect health, etc.




If matter, etc. from display gets in eyes or mouth, immediately rinse with clean water without rubbing, and promptly see medical attention.

Matter, etc. from display might cause blindness, affect health, etc.


WARNING

-  **Do not illuminate the light or use it as a camera flash near a person's eyes. In particular, maintain adequate distance from infants.**


Might cause visual impairment. It might also dazzle or surprise a person and cause injury or other accident.

-  **Do not illuminate the light or use it as a camera flash pointed at the driver of a car, etc.**


Doing so might impair driving and cause an accident, etc.

-  **Do not look at a screen that flickers repeatedly for a long period.**

Doing so might cause convulsions or loss of consciousness.

-  **Do not allow water or other liquid (beverage, sweat, seawater, pet urine, etc.), or metal, flammable, or other foreign objects to enter the au IC Card slot or microSD memory card slot. Do not mistake the slots or insert cards in the incorrect orientation.**


Doing so might cause fire, burns, injury, electric shock, etc.

-  **Do not expose the camera lens to direct sunlight for a long period.**

Lens collects light, and might cause fire, burns, injury, etc.

-  **Do not sound personal alarm close to ears.**

Doing so might affect hearing.

-  **Completely turn off the product or put it in Airplane mode before boarding an airplane.**

Use of cell phones on board is restricted. Follow the instructions of each airline.

Failure to do so may adversely affect on-board electronic equipment.

Prohibited acts related to cell phone usage on an airplane may be punished by law.

-  **Follow the instructions of each medical facility for the use of cell phones on their premises.**

Completely power off the product in a place where the use is prohibited.

Failure to do so may affect electronic equipment and electronic medical equipment.



Always distance the product from your ear when set to handsfree calling, when the ringtone is sounding, while waiting for a call, etc. Adjust the sound to an appropriate volume when using an earphone microphone, etc. to for gaming, videos, music, etc.

Volume that is too loud or using the product continuously for a long period might affect hearing, etc.

Also, inability to hear surroundings might cause an accident.



Persons with a weak heart should take care with the vibration and ringtone settings for incoming calls.

Not doing so might allow their heart to be affected.



If wearing an electric medical device, etc., you should first check with the manufacturer or sales outlet regarding how it is affected by electronic signals.

Not doing so might cause the electric medical device, etc. to be affected.



Completely turn off the product near precision-control or faint-signal electronic devices.

Not doing so might cause electronic devices to malfunction.

* Examples of electronic devices to be careful of
Hearing aids, implanted pacemakers and defibrillators, other electric medical device, other automatic-control devices, etc.
Persons with an implanted pacemaker, defibrillator, or other electric medical device should first check with the manufacturer or sales outlet regarding how it is affected by electronic signals.



If the display is broken, be careful of broken glass and exposed product interior.

Not doing so might cause burns, injury, electric shock, etc. if broken or exposed components are touched.



If internal battery is leaking or emits an odor, immediately discontinue use and keep away from flames.

Leaking fluid can catch fire and cause ignition, rupture, etc.



Do not allow pets, etc. to bite product.

Doing so might cause the internal battery to ignite, rupture, overheat, or leak, causing fire, burns, injury, etc.

CAUTION



Do not swing by strap, etc.

Doing so might cause it to hit you, others, or surrounding objects, causing injury, etc.



If display becomes broken and internal matter, etc. leaks, be careful not to get it on skin (face, hands, etc.), clothing, etc.

Doing so might cause blindness, harm skin, etc. If internal matter, etc. gets in eyes or mouth, or on skin or clothing, immediately rinse with clean water.

If it gets in eyes or mouth, rinse and promptly seek medical attention.



Do not dispose of with ordinary waste.

Doing so might cause ignition, causing fire, burns, injury, etc. It also affects the environment. Bring used product to an au shop or other service counter, or follow local regulations on collection.



If matter, etc. from internal battery leaks, be careful not to get it on skin (face, hands, etc.), clothing, etc.

Doing so might cause blindness, harm skin, etc. If internal matter, etc. gets in eyes or mouth, or on skin or clothing, immediately rinse with clean water.

If it gets in eyes or mouth, rinse and promptly seek medical attention.



Persons using the product in an automobile should first check with the manufacturer or sales outlet regarding how it is affected by electronic signals.

Depending on the make of car, in rare cases onboard electronic devices are affected. Immediately discontinue use.



If product use causes any skin abnormality, immediately discontinue use and seek medical attention. Use might cause itchiness, rash, etc. depending on the customer's constitution and health.

For product materials, refer to "Materials list" (▶ P.19).



Product receiver, speaker, and out-camera lens use magnetic components; check that nothing metal (cutter blades, staples, etc.) are magnetically attached.

Attached objects might cause injury, etc.

**View display in adequately lit surroundings at an appropriate distance.**

Viewing display in dark surroundings closely might affect vision.

Charging equipment**WARNING**

Do not use specified charging equipment (sold separately) if cord is damaged.

Doing so might cause fire, burns, electric shock, etc.



Do not use specified charging equipment (sold separately) in a bath room or other humid location.

Doing so might cause fire, burns, electric shock, etc.



If thunder is audible, do not touch specified charging equipment (sold separately).

Doing so might cause electric shock.



Do not short-circuit charging terminals when connected to an outlet. Do not come in contact with charging terminals (hand, fingers, etc.).

Doing so might cause fire, burns, electric shock, etc.



Do not place heavy objects on the cord of the specified charging equipment (sold separately), pull it, or otherwise subject to excessive force.

Doing so might cause fire, burns, electric shock, etc.



Do not allow a metal strap or anything else metal to come in contact when plugging in or unplugging specified charging equipment (sold separately) from an outlet.

Doing so might cause fire, burns, electric shock, etc.



Do not use a travel converter with specified charging equipment (sold separately).

Doing so might cause ignition, overheating, electric shock, etc.



Do not apply force where product is joined to specified charging equipment (sold separately).

Doing so might cause fire, burns, injury, electric shock, etc.



Do not touch the cord of specified charging equipment (sold separately), charging terminals, or power plug with wet hands.

Doing so might cause fire, burns, electric shock, etc.



Use the specified power supply and voltage.

Incorrect power supply and voltage might cause fire, burns, electric shock, etc.

AC adapter: 100 VAC (only to be connected to household AC outlet)



Wipe any accumulated dust on power plug.

Use with accumulated dust might cause fire, burns, electric shock, etc.



Plug specified charging equipment (sold separately) into outlet firmly.

Not plugging equipment in firmly might cause fire, burns, electric shock, etc.



When unplugging the power plug, hold by the adapter body without pulling by the cord forcefully.

Pulling by the cord of specified charging equipment (sold separately) might damage the cord, causing fire, burns, electric shock, etc.



When connecting or disconnecting specified charging equipment (sold separately) from the product, connect/disconnect from the terminal without bending and without pulling by the cord forcefully.

Not connecting/disconnecting correctly might cause fire, burns, injury, electric shock, etc.



If charging terminals are bent or otherwise deformed, immediately discontinue use. Do not bend terminals back and use.

Short-circuiting of charging terminals might cause fire, burns, injury, electric shock, etc.



When not using, unplug power plug of specified charging equipment (sold separately) from outlet.

Leaving power plug plugged in might cause fire, burns, injury, electric shock, etc.



If water or other liquid (beverage, sweat, seawater, pet urine, etc.) enters, immediately unplug power plug from outlet.

Not doing so might cause fire, burns, electric shock, etc.



Before caring for product, unplug power plug from outlet.

Not unplugging first might cause fire, burns, electric shock, etc.



CAUTION



Do not have contact with specified charging equipment (sold separately) for a long period while plugged in.

Doing so might cause burns, etc.

■ au IC Card



CAUTION



When handling au IC Card, be careful of notch so as not to injure yourself (fingers, etc.).

Not doing so might cause injury, etc.

■ IC card cover/tray tool (complimentary sample)



WARNING



The end of the IC card cover/tray tool (complimentary sample) is pointed. Do not point it at yourself or at others.

Doing so may cause it to poke yourself or others, causing injury or loss of sight.



CAUTION



If using the IC card cover/tray tool (complimentary sample) causes any skin abnormality, immediately discontinue use and seek medical attention.

Itchiness, rash, etc. may occur depending on the customer's constitution and health.

For product materials, refer to "Materials list" (▶ P.19).



Keep out of reach of infants.

Not doing so might allow them to swallow it, causing choking, injury, etc.

■ Electric medical devices

WARNING



If wearing an implanted pacemaker or defibrillator, distance the product at least 15 cm from the implant when carrying/using it.

Not doing so may cause the electric signals to affect operation of electric medical devices.



If using electric medical devices other than an implanted pacemaker or defibrillator for home treatment, etc. outside a healthcare facility, check with each manufacturer, etc. regarding how it is affected by electronic signals.

Not doing so may cause the electric signals to affect operation of electric medical devices.



Set the product not to emit electronic signals before entering a place where movement is restricted and you will be less than 15 cm from those around you (place in Airplane mode, turn power completely off (▶ P.50), etc.).

Persons with an electric medical device such as an implanted pacemaker or defibrillator may be nearby.

Not doing so may cause the electric signals to affect operation of electric medical devices.



Observe the regulations of each healthcare facility regarding use of the product in facilities.

Not doing so may affect operation of electric medical devices.

■ Materials list

■ Main unit of miraie f

Part	Material	Surface treatment
Exterior case (display side)	PA resin	Acrylic UV hard coating
Exterior case (side, around bottom), volume up/down buttons, personal alarm button	PC resin	Acrylic UV hard coating
Display	Chemical hardened glass	Antifouling treatment
Power button	Aluminum	Anodized
Lens for the camera	PMMA resin	Hard coating
Light	PMMA resin	—
IC card tray	POM resin	—

■ IC card cover/tray tool (complimentary sample)

Part	Material	Surface treatment
Exterior	POM resin	—

Handling precautions

These precautions should be observed to prevent product malfunction and to ensure that performance can be fully demonstrated. Thoroughly read these precautions to ensure correct use.

■ Precautions common to the main unit, internal battery, charging equipment, au IC Card, peripheral devices

- Do not apply excessive force to the product during use. Be sure not to put the product into a tightly packed bag or place a heavy object on the product in a bag. Sitting on the product in your pocket might damage the display or internal circuit board resulting in a malfunction. Keeping an external device connected to the external connection terminal or earphone microphone terminal might damage the connector resulting in a malfunction. Such damage and malfunction are not covered by the warranty, even if there is no external damage.
- To ensure the water/dust resistance (equivalent to IPX5, IPX8, and IP5X) of the product, use the product with the card slot cover tightly closed.
Note that water/dust resistance is not guaranteed in every usage condition. Do not allow water to get inside the product or splash water on the charging equipment or optional accessories.
Do not open/close the card slot cover in the rain or with any water on the surface of the product. Doing so might allow water intrusion resulting in internal corrosion. Malfunction determined to be caused by such water intrusion are not covered by the warranty.
- Do not use the product in extremely hot, cold or humid places. (Use within an ambient temperature range of 5°C to 35°C and humidity range of 35% to 85%.)
 - Charging equipment
 - Peripheral devices
- Do not use the product in extremely hot, cold or humid places. (Use within an ambient temperature range of 5°C to 35°C and humidity range of 35% to 90%. Temporary use at 36°C to 40°C is allowed.)
 - Main unit
 - au IC Card (attached to the main unit)
- Do not use in places subject to lots of dust or vibration. Doing so might cause malfunction.

- Clean the external connection terminal and earphone microphone terminal with dry cotton swabs, etc. every now and then. Soiled terminals might cause poor connection. Do not exert a strong force to clean the external connection terminal or earphone microphone terminal to prevent deformation.
 - Clean the product with a dry soft cloth (such as the type used for eyeglasses). Do not rub it roughly with a dry cloth. The display may be damaged. Drops of water or dirt left on the display may cause stains. Wiping the product using alcohol, thinner, benzine, detergent, glass cleaner, etc. might erase the printing on the outer casing or cause malfunction.
 - Product use may affect a nearby landline phone, TV, or radio that is in use. Distance the product as much as possible.
 - The product may become warm depending on usage (during charging, etc.) but is normal.
 - Do not leave near corrosive chemicals or where corrosive gases are present. Doing so might cause malfunction.
 - Do not use outside if thunder is audible. Doing so may attract lightning or cause electric shock.
 - Always use specified peripheral devices. Using peripheral devices other than that are specified might cause malfunction.
 - Do not place in a microwave oven or other cooking apparatus or pressure cooker. Doing so might cause malfunction.
- The customer should not disassemble, modify, or repair the product, etc. Doing so might cause malfunction. Modification of the product is a violation of the Radio Law and Telecommunications Business Law.
 - To avoid short-circuiting the external connection terminal and earphone microphone terminal, do not allow any part of yourself (fingers, etc.) or conductive objects (anything metal, pencil lead, etc.) to come in contact with or enter them. Doing so might cause malfunction.
 - If product, etc. get wet while charging, immediately unplug the power plug of the specified charging equipment (sold separately).
 - Do not use while driving an automobile, riding a motorcycle/bicycle, or walking. Use while driving an automobile or riding a motorcycle is prohibited by law. Use of a mobile phone while riding a bicycle may be punishable by law.
 - Use or charging while in a bag or covered by a blanket might cause malfunction.
 - When using charging equipment, external devices, etc., insert/remove the connector from the terminal without bending. Not inserting/removing in the correct direction might cause malfunction.
 - Do not expose the camera lens to direct sunlight, etc. for a long period. Doing so might cause malfunction.
 - Do not use, store, or leave where exposed to direct sunlight (in an automobile, etc.), high temperatures, extremely low temperatures, or excessive humidity or dust. Doing so might cause malfunction.

- Do not place on a wobbly table, slanted surface, or other unstable location, especially when charging or if the product is set to vibrate. Doing so might cause product, etc. to fall and malfunction, etc.
- When charging the product, do not exceed the rating of the power bar outlet or electrical accessory.
- The personal alarm is not an absolute guarantee of crime prevention or safety. The Company takes not responsibility for damages resulting from theft, accident, trouble, etc.
- The personal alarm sounds at a volume of approximately 95 dB (decibels) when at a distance of about 10 cm from the speaker. Surroundings may prevent the personal alarm from being audible to other nearby persons.

■ Main unit

- Before use, be sure to confirm that the personal alarm will sound.
- Product battery is built in and cannot be replaced by the customer. Inquire at an au shop or the Customer Service Center for battery replacement.
- Do not forcefully press, tap or intentionally subject the display to strong impact. Doing so might cause scratching or damage.
- Do not forcefully press your fingernails, sharp objects or hard objects against buttons or display surface. Doing so might cause scratching or damage.
- Never use the product if it has been modified. Use of a modified device violates the Radio Law and Telecommunications Business Law.

This product has acquired such certification as conformity with technical regulations as a specified radio station based on the Radio Law as well as conformity with technical regulations for terminal devices based on the Telecommunications Business Law, and can be verified by the "Technical Conformity Mark" on the product.

Home screen → [Settings] → [About phone] → [Compliance information]

If modifications are made to the internal components, the certification, etc. of conformity with technical regulations will become invalid. Never use the product with the certification invalid, as it is a violation of the Radio Law and Telecommunications Business Law.

- Take care not to place magnetized items such as magnetic cards, speakers and TV sets near the product, as it might cause malfunction.
Putting a strong magnetism close to the product might cause false operation.
 - Do not bring near a cash card/credit card/prepaid card/ or other magnetic card. Doing so might cause loss of recorded information.
 - When you put the product in your pocket or bag, take care so that the display does not come in contact with metal objects or other hard objects. Doing so might cause scratching or damage. Also, be careful not to scratch or damage the display by using a strap whose metal or other hard part comes in contact with the display.
 - When suddenly brought into a warm place from a cold place, or when in a humid location, or when used where temperature suddenly changes (e.g. near the air discharge port of an air conditioner), water droplets (i.e. condensation) sometimes are formed inside the product. Note that when used under conditions such as this, the humidity might cause corrosion or a fault.
 - Condensation may form on the camera lens and inside of the display due to the temperature, humidity, etc. where used. This is not a malfunction or trouble with the product.
- Where condensation is likely to form on the camera lens and inside of the display
Condensation may form on the lens and inside of the display where temperature changes are large or where humidity is high such as below.
 - Bringing the product into a warm location such as indoors from a cold one
 - Do not exert excessive force when attaching/removing a microSD memory card. Doing so might injure your hands or fingers.
 - While writing/reading data to/from a microSD memory card, do not subject the product to vibration or impact or turn off the power. Doing so might cause loss of data or malfunction.
 - Note that covering the light sensor with your finger or putting a sticker, etc. on it may hinder it from detecting the ambient light level and functioning correctly.
 - Do not put a sticker, etc. on the proximity sensor. Doing so may cause the sensor to malfunction and make the display always turned off while receiving a call or during a call.
 - The card slot cover should normally be closed. Using the product with the cover open might allow dust, water, etc. to enter and cause malfunction.
 - Do not allow liquid or foreign objects such as metal to enter the au IC Card slot or microSD memory card slot. Doing so might cause malfunction.
 - Do not subject product to excessive impact such as by dropping it, throwing it, or stepping on it. Doing so might cause malfunction.

- Do not place directly on a sandy beach, etc. Doing so might allow sand, etc. to enter the receiver, microphone, speaker, etc., causing sound to be less audible, or allow sand, etc. to get in product and cause malfunction.
- Always use the supplied IC card cover/tray tool (complimentary sample) to open the card slot cover. Opening the cover with a pointed object (fingernail, ballpoint pen, pin, etc.) might damage the connector or cause malfunction.
For details on opening the card slot cover, refer to "Attaching au IC Card" (►P.43).

■ Touch Panel

- Stickers and film sheets (commercially available protective films, privacy protectors, etc.) on the display might prevent the touch panel from operating correctly.
- Note that if carried in a pocket or bag, anything conductive (metal, etc.) near the touch panel may cause it to misoperate.
- The touch panel is designed to be lightly touched by fingers. Do not apply strong pressure with your fingers or sharp-pointed objects (such as fingernails, ballpoint pens and pins) on the touch panel.
Touching the panel may not work in the following cases.
Note that it may cause malfunction.
 - Operation with gloved hands
 - Operation with fingernails
 - Operation with foreign object on the screen
 - Operation with protective sheet or seal on the screen
 - Operation with a water drops or dew condensation attached on the touch panel

- Operation under water

■ Internal battery



Li-ion 00

The internal battery is not adequately charged at time of purchase. If you have not used the product for a long period, first charge the battery before use.

- The capacity of the internal battery decreases if left in extremely hot conditions (such as in a sealed automobile in the summer) or cold conditions, which shortens the available battery time. This also shortens the life of the battery. Use in normal temperatures as much as possible.
- The internal battery continues to deplete after charging even if the product is not used. The internal battery may be discharged if the product has not been used for a long period; charging is recommended before use.
- The internal battery is a consumable. Discontinue use if its available time is extremely short even after charging and it does not recover its functioning, which indicates it has reached the end of its life. Since battery is built in, it must be left at an au shop for repair at cost. Note that you may not be able to use the product for a period of time. Battery life depends on conditions of use, etc.
- Do not store the product in the following conditions, which might affect the performance and life of the internal battery.
 - Fully charged (immediately after charging)
 - With no charge left (depleted such that product cannot turn on)
 - In high temperature/humidity

- The internal battery might bulge depending on conditions of use as it reaches the end of its life. This is a characteristic of lithium-ion batteries and is not a safety risk.

■ Charging equipment

- Do not wrap the power cord of specified charging equipment (sold separately) around the adapter unit. Do not forcefully bend the plug or connector of the specified charging equipment (sold separately) and power cord where connected. Do not place heavy objects on the cord of the specified charging equipment (sold separately) or USB cable, pull it, or otherwise subject to excessive force. Doing so might cause damage.
- When unplugging the power plug of the specified charging equipment (sold separately), hold by the power plug body. Pulling by the cable might damage the cable.

■ au IC Card

- Do not forcibly remove or insert the au IC Card. Be careful not to exert excessive force when inserting the card into your au cell phone.
- You are responsible for any damage caused by inserting your au IC Card into some other IC card reader, etc.
- Do not put stickers, etc. on the au IC Card.
- Do not do anything to damage the card (use in hot conditions, dispose of in fire, allow an object to contact the metal portion, subject to impact, bend or place a load on, get wet, etc.). Doing so might cause loss of data or malfunction.

■ IC card cover/tray tool (complimentary sample)

- Do not apply excessive force to the IC card cover/tray tool (complimentary sample). Doing so might cause malfunction or damage.

■ Camera

- When photographing important occasions, take a trial shot and check the shot image to make sure it is correctly shot.
- Do not photograph where prohibited.

■ Copyrights and rights of portrait

- You are not allowed to copy, distribute, publish, modify or edit the data you shot, recorded or downloaded using this product without the consent of the copyright holder, except for personal use, under the copyright law. In addition, do not use or modify portraits or names of other individuals without their consent, as it might infringe on rights of portrait.
Note that shooting and recording may be restricted at some live performances, shows and exhibitions even for personal use.
- Be careful about the copyright and portrait right when posting photos you shot, etc. on Internet homepages.

■ Backup content on the product

- Please back up important content registered to the product or downloaded for the product from an outside source. Content recorded to memory on the product sometimes disappears or is altered by unexpected factors, such as static electricity or a fault, repair, mishandling, etc.

Notes on water, dust, and shock resistance

This product has water resistance equivalent to IPX5^{*1} and IPX8^{*2}, as well as dust resistance equivalent to IP5X^{*3} on the condition that the card slot cover is completely attached. This product has shock resistance conforming to MIL standards^{*4} (based on in-house testing).

Specifically, you can make calls holding the product with wet hands in the rain (less than 20 mm per hour) without an umbrella, as well as use the product in a place with water such as a bathroom or kitchen.

Before using the product, thoroughly read "Precautions before use" to ensure correct use. Failure to follow the contents described in these sections may cause the intrusion of water, sand or other foreign material, resulting in overheating, ignition, electric shock, injury or a fault.

- ^{*1} IPX5 equivalent means that the product will maintain its operability as a phone even if it is sprayed with water from a 6.3 mm diameter nozzle at a distance of about 3 meters for more than 3 minutes at a rate of about 12.5 liters per minute from any direction.
- ^{*2} IPX8 equivalent means that the product will maintain its operability as a phone with no water getting inside the main unit even if it is gently submerged in a tank of still tap water at room temperature to a depth of 1.5 meter for about 30 minutes.
- ^{*3} IP5X equivalent means that the product will securely maintain its operability as a phone even after it has been placed in an apparatus with grit and dust of diameters of 75 μ m or less and shaken for 8 hours.

- ^{*4} MIL standard conformity: Drop testing (in which the product is dropped in 26 directions from a height of 1.22 m) was conducted in accordance with MIL-STD-810G Method 516.7-Shock defined by the U.S. Department of Defense. Shock-resistant property of this product is based on the assumption that it is used in everyday life. Therefore, the product might break if it receives an excessive impact such as being thrown or dropped forcibly. Note also that the product gets scratches, etc. by falling impact even though its functionality of the main unit remains intact.

Since operation of the product on each usage scene was confirmed based on the above assumption, proper operation of the product in every possible condition during actual use is not guaranteed. Malfunctions determined to be caused by mishandling by the customer are not covered by the warranty.

Precautions before use

- Close the card slot cover firmly. Water resistance is only effective when the cover is securely closed.
- Never open/close the card slot cover while hands or the product are wet. Do not connect an earphone with any water in the earphone microphone terminal.
- Do not submerge in or splash with liquid other than tap water (seawater, pool water, hot spring water, soap, detergent, water with bath salt, alcohol, beverage, salad dressing, etc.). Do not use where exposed to pet urine. If splashed, immediately rinse with tap water.
- Do not place directly on a sandy beach, etc. Doing so might allow sand, etc. to enter the receiver, microphone, speaker, earphone microphone terminal, external connection terminal, etc., causing sound to be less audible, or allow sand, etc. to get in product and cause overheating or malfunction.
- Do not use the product underwater.
- Do not leave for a long period in a bath room, near a sink, or in high humidity.
- Even after the water is drained, the inner parts might be still wet. Although you can use the product, do not place it near things that must not get wet. Take care not to wet your clothes, bag or contents of the bag.
- If water enters the receiver, microphone, speaker, etc. and sound is temporarily less audible, drain water.
- Avoid spraying the product with high-pressure water, as the product is not designed to withstand high water pressure.

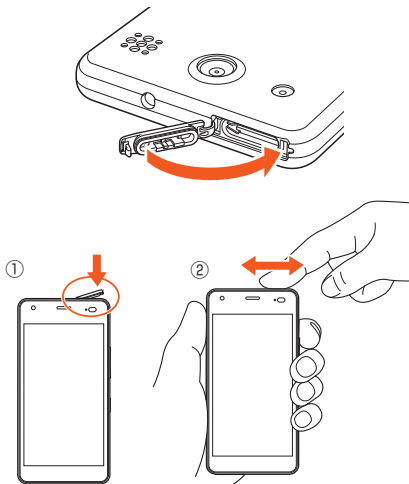
- Do not wash the product in a washing machine or ultrasound bath.
- Do not submerge in a bathtub. Product is not designed to withstand heat.
- Extreme changes in temperature cause condensation. Wait until the product reaches room temperature before you bring the product from a cold place into a warm bathroom.
- Product does not float.

● Card slot cover

Ensure the card slot cover is closed firmly. Even a minute particle (a single hair, etc.) becoming lodged between the contact surfaces can cause seepage. Do not open/close the card slot cover with gloves on. Even a minute particle (a single hair, etc.) becoming lodged between the contact surfaces can cause seepage. If closing the cover and there are any water droplets, soiling, etc. present, wipe with a dry, clean cloth. The card slot cover cannot maintain water resistance if deteriorated or damaged.

How to close the card slot cover

After returning the hinge of the card slot cover, ① press the card slot cover in with the pad of your finger. Press along the cover in direction ② to close firmly ensuring no gaps.



memo

- ◎ Always use the supplied IC card cover/tray tool (complimentary sample) to open the card slot cover (►P.43).

● If any liquid other than plain water gets on the product

If any liquid other than plain water (e.g. seawater, detergent, alcohol) gets on the product, immediately rinse it with plain water.

You can wash the product under a mild water flow (up to 6 liters per minute) from a tap or shower at room temperature (5°C to 35°C) at a distance of about 10 cm from the faucet or showerhead.

If the product gets dirty, wash it with your hands holding the card slot cover so that it does not open. Do not use a brush.

● After the product gets wet

If the product gets wet, drain water, and without opening the card slot cover, wipe the main unit and card slot cover with a dry, clean cloth.

In cold regions, water on the product may freeze. Using the product with frozen water on it may cause malfunction.

Do not leave the product without wiping off the water.

● Rubber seals

The rubber seal around the card slot cover is important for maintaining water resistance. Do not damage or remove the rubber seal.

When closing the card slot cover, take care not to get the rubber seal caught. Forcibly closing the cover with the rubber seal caught may damage it resulting in loss of water resistance. Just a small particle (a single hair, etc.) on the seal can allow intrusion of water.

If any liquid other than plain water (e.g. alcohol) gets on the rubber seal, it may cause deterioration in durability.

Do not insert sharp objects into gaps around the card slot cover. Doing so might damage or deform the product or damage the rubber seal, allow intrusion of water.

It is recommended to replace parts used for maintaining water resistance once every two years regardless of whether any abnormality is present. For information on part replacement, contact an au shop near you.

● Heat resistance

Do not submerge in or splash hot water on product. Do not use in a sauna or expose to hot air from a dryer, etc. Product is not designed to withstand heat.

● Impact

Although the product is impact-resistant, this assumes impact with daily use, and the product may break if subjected to excessive shock such as by being thrown or dropped forcefully.

■ Precautions on charging

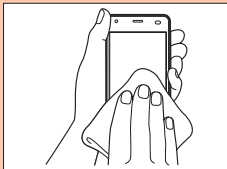
The supplied and optional accessories are not water-resistant/dust-resistant. Be sure to check the following points before and after charging.

- Never charge the battery if the product is wet. Doing so might cause fire, burns, injury, electric shock.
- Check that the product is not wet. If you are charging the battery just after the product gets wet, drain water well and wipe the remaining water off with a clean dry cloth before connecting a microUSB plug in the external connection terminal.
- Do not touch the specified charging equipment (sold separately) with wet hands. Doing so might cause electric shock.
- Use the specified charging equipment (sold separately) where not exposed to water, and do not use in a bath room, shower, near a sink, or other place where water is used. Doing so might cause fire, burns, electric shock, malfunction. Do not bring into a bath room, etc. even if not charging. Doing so might cause fire, burns, electric shock, malfunction.

■ Draining water after wetting the product

If product becomes wet with water, always drain water from the receiver, microphone, speaker, earphone microphone terminal, and external connection terminal. Using the product with water remaining in those parts might wet your clothes or bag, or the sound might become hard to hear. Follow the steps below to drain water.

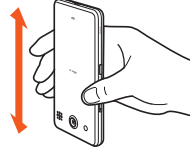
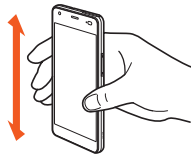
1 Wipe water thoroughly on the surface of the product with a clean dry cloth without waste textiles



2 Shaking the product

- ① Hold the product firmly and shake it in the direction of arrows until water does not come out.
 - * When shaking the product, stay alert to your surroundings.
 - * Be careful not to have the product pop out, and hold it firmly to drain water.

From microphone, external connection terminal/
earphone microphone terminal:
20 times or more each



From microphone/speaker:
20 times or more each

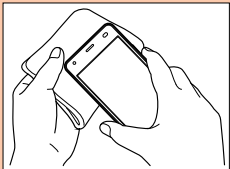


② Wipe drained water.

* The receiver, microphone, speaker, earphone microphone terminal, and external connection terminal are particularly hard to drain water from. Hold the product so that these parts are downward and press to wipe off.

- ③ Place the product on a dry towel or cloth and leave it at room temperature.

- 3 Press the product gently into a dry, clean cloth without lint and wipe off water remaining in gaps in the receiver, microphone, speaker, earphone microphone terminal, external connection terminal, etc.**



- 4 Leave the product for one hour or more at room temperature to dry after removing drained water thoroughly**

If water is not adequately removed, the volume of the personal alarm may be affected.

Even after you take these procedures, water may remain on the product. Do not place the product near things that you do not want to wet.

Also, take care not to wet your clothes, bag, etc.

Notes on using Bluetooth®/ Wireless LAN (Wi-Fi®) function

- The product Bluetooth® function is certified as conforming to Japanese domestic standards.
- The product wireless LAN (Wi-Fi®) function is certified as conforming to Japanese domestic standards.
- The 2.4 GHz band used by Wireless LAN (Wi-Fi®) and Bluetooth® devices is operated by various other devices. For this reason, the communication speed and connectable range may be decreased, or disconnection may occur, due to interference from other devices.
- Do not use this product in places where electromagnetic waves are generated or near electric products, AV and OA equipment, or other magnetized devices.
- Subjecting this product to magnetic or electrical noise might increase noise and prevent it from performing communications. (This product is particularly susceptible to noise when it used near a microwave oven.)
- Using this product near a TV, radio or similar appliance might cause reception interference and disrupt TV images.
- The searching might not be successful if there are multiple Wireless LAN (Wi-Fi®) access points near to the product or the same channel is being used.
- Use of cell phones on board is restricted. Follow the instructions of each airline.
- The communication speed and connectable range vary depending on the distance between communication devices, obstacles and the devices used.

Cautions on using 2.4 GHz band

The frequencies used by the Bluetooth® and/or Wireless LAN (Wi-Fi®) function of this product are in the 2.4 GHz band. In this frequency band, other similar wireless stations, in-plant wireless stations for mobile unit identification that require a license to use, such as factory production lines, specific small power wireless stations that do not require licenses, amateur wireless stations (collectively called "other wireless stations" from here on) are operated in addition to home electrical appliances such as microwave ovens, devices for industrial, scientific and medical devices.

1. Before using the product, make sure that "other wireless stations" are not in operation nearby.
2. In the event that instances of radio wave interference have occurred between the product and "other wireless stations", immediately either relocate the product or stop operation of the device (stop the emission of radio waves).
3. If you have questions or are unsure, contact an au shop or the Customer Service Center.



memo

- © The connections between this product and all other Bluetooth® and Wireless LAN (Wi-Fi®) devices have not been confirmed. Therefore, connections with all Bluetooth® and Wireless LAN (Wi-Fi®) devices are not guaranteed.

- ◎ This product supports security features for wireless communications that are compliant with the Bluetooth® and Wireless LAN (Wi-Fi®) standard specifications, but the security may not be sufficient depending on the usage environment and configuration. Be careful when making data communication using Bluetooth® or Wireless LAN function (Wi-Fi®).
- ◎ Wireless LAN (Wi-Fi®) has the advantage that it can be freely connected anywhere within the radio wave range, as it uses radio waves for exchanging information. At the same time, there is a risk that a malicious third party may obtain unauthorized access if security settings have not been configured. You are recommended to configure security settings before use at your decision and responsibility.
- ◎ The Company assumes no responsibility for leakage of data or information that may occur during Bluetooth®/Wireless LAN (Wi-Fi®) communication.
- ◎ Since Bluetooth® and Wireless LAN (Wi-Fi®) functions use the same frequency band, using the both functions at the same may cause radio wave interference resulting in decreased communication speed or disconnection from the network. If connection fails, stop using either of the Bluetooth® and Wireless LAN (Wi-Fi®) functions.

Bluetooth® and Wireless LAN (Wi-Fi®) functions of this product use frequencies in the 2.4 GHz band.

- Bluetooth® function: 2.4FH1/XX1



This product uses the 2.4 GHz band. FH-SS is used as the modulation scheme. The interference distance is about 10 m or less.

- Wireless LAN (Wi-Fi®) function: 2.4DS4/OF4



This product uses the 2.4 GHz band. DS-SS and OFDM are used as the modulation schemes. The interference distance is about 40 m or less.

This means that all bandwidths are used, and that band of mobile unit identification devices can be avoided. For use in an airplane, check with the airline company in advance.

Security codes/SIM PIN

The product has various security codes that you can use. The available security codes are as follows. Do not forget the various security codes that are set as they are necessary for various operations and contracts. Be sure to change the initial codes to your own.

Security code

Example of usage	① To do remote operation of voice mail and call forwarding services from a landline phone
	② To use the Customer Service Center and to do various inquiries, applications, and modifications on the au homepage
Initial value	A four digit number chosen by the customer and noted on the application form

Security setting on the start screen

Example of usage	To set and disable security
Initial value	According to initial setting at time of purchase

SIM PIN

Example of usage	To prevent unauthorized use of the au IC Card by third parties
Initial value	1234

SIM PIN

SIM PIN

To prevent unauthorized use of the au IC Card by a third party, you can set the product to require SIM PIN code entry every time the power is turned on. You also need to enter the SIM PIN code when setting whether SIM PIN code entry is required.

If the SIM PIN code is incorrectly entered three times consecutively, the SIM PIN code will be locked. You can unlock the SIM PIN code using a PUK code.

- At time of purchase, the SIM PIN code is "1234" and entry is not required. You can change the SIM PIN code to any four- to eight-digit number, and set entry to be required as necessary.
- If you are going to use the product with entry required, be sure to change the code to your own.

■ PUK code

If the SIM PIN code is locked, you can unlock it by entering the PUK code.

- PUK code is an eight-digit number given at the time of purchase, which is printed on the back side of the plastic card on which your au IC Card is attached. The PUK code is predetermined at time of purchase.
- After entering the PUK code, you need to set a new SIM PIN code.
- If the PUK code is incorrectly entered ten times consecutively, contact an au shop, PiPit or the Customer Service Center.
- The SIM PIN code is not reset by initializing the product.

<Please copy this section and use>

【Password entry field】

Google account ID	au ID account ID
<input type="text" value="@gmail.com"/>	<input type="text"/>
Google account password	au ID account password
<input type="password"/>	<input type="password"/>
Parental password: Password	Security (start screen) Lock: Lock No.
<input type="password"/>	<input type="password"/>
Parental password: Pattern	Security (start screen) Lock: Password
<div><div></div><div></div><div></div><div></div><div></div><div></div><div></div><div></div><div></div></div>	<div><div></div><div></div><div></div><div></div><div></div><div></div><div></div><div></div><div></div></div>
	Security (start screen) Lock: Pattern
	<div><div></div><div></div><div></div><div></div><div></div><div></div><div></div><div></div><div></div></div>

* Strictly manage your account and password so that they are not revealed.

Notes on data communication charge

- Since a constant Internet connection is possible with this product, data communication may be performed automatically by some apps, resulting in high data communication charges. Therefore, subscription to a packet flat-rate service/data communication charge discount service is recommended.
- To browse homepages, download apps, communicate using apps, send/receive e-mails and configure various settings, connection to the Internet is required, to which data communication charge applies.

* Data communication charge does not apply to wireless LAN (Wi-Fi®) connection.

Notes on applications

- Be sure to check the security of the application, then install it at your own risk. Some applications might cause virus infection, damage various data, and send out your location information, usage history or personal information stored in your cell phone via the Internet.
- The Company assumes no responsibility for any issues that might be caused by applications you have installed. Repair costs in this case may be charged even during the warranty period.
- The Company assumes no responsibility for any disadvantage brought to you or any third party by the applications you have installed.
- Insertion of a microSD memory card is necessary to use some applications.
- Some applications prohibit the product from entering sleep mode while they are active, or rapidly drain the battery while running in the background.
- Operational procedures and screen appearances of the applications preinstalled in this product and those installed by you are subject to change without notice as a result of version upgrade. In addition, operating procedures described in this manual may differ from the actual procedures.

Cell Phone Etiquette

■ Use of the product is not allowed in the following places!

- Do not listen to music or watch videos while driving an automobile or riding a motorbike, bicycle, etc. Use of cell phones while driving an automobile or motorbike is prohibited by law. (Use of cell phones while riding a bicycle may also be punishable by law.) In addition, stay alert to the traffic around you even when walking. Surrounding sounds may not be heard clearly, and gazing at the screen might distract your attention causing a traffic accident. Be especially careful at railroad crossings, on a platform, and at pedestrian crossings.
- Use of cell phones on board aircraft is restricted. Follow the instructions of each airline.
- Before letting a child carry the product to school, check with the school beforehand.

■ Consider people around you!

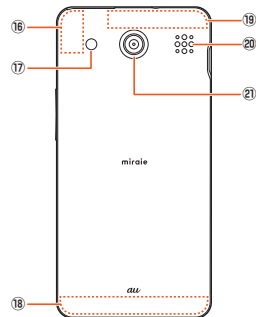
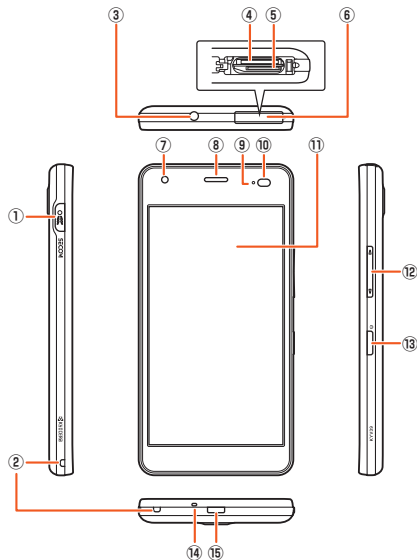
- To prevent ringtone from bothering other people, not only refrain from making a call but also power off or use Silent mode at a movie theater, theater, museum, library, etc.
- In a city area, use in a place where you do not bother people walking.
- It is extremely dangerous to walk while looking at the screen of the cell phone. Do not make calls or operate a cell phone while walking or by stopping suddenly.
- Move to a place where you do not disturb others while you are in shinkansen, a hotel lobby, etc.
- Be careful not to be loud while talking.
- Take care of sound being audible from earphones when on a train, etc. with others around.
- Ask permission if you take photos with your cell phone camera.
- Observe general manners when using the camera function.
- There may be a person with a cardiac pacemaker nearby at a place filled with people such as in a crowded train. Place the product in Airplane mode or completely turn the power off beforehand.
- When a medical institution has laid down designated areas where use of the product is prohibited or is not allowed to be brought in, abide by the instructions of that medical institution.

■ Fake power off


- Fake power off (▶P.65) is a function intended for children that simulates power off. With "Fake power off" set, even when the power is turned off, a parent or guardian can get location information, cause the personal alarm to sound in an emergency, etc. The product can also receive Earthquake Early Warning and Disaster Information.
- Power can be completely turned off with "Normal power off" in Parental settings (▶P.63). This is designed to prevent a third party from completely turning off the power without the parental password and is very safe. The parent or guardian should turn the power completely off beforehand mainly where it must be turned off (in hospitals, aboard aircraft, etc.).

Getting Ready

Names and functions of parts



① **Personal alarm button**

Press and hold  for at least ½ a second to cause the product to vibrate and display the personal alarm standby screen. Press  again to operate the personal alarm (► P.40).

② **Strap eyelet**

③ **Earphone microphone terminal**

④ **microSD memory card slot**

⑤ **au IC Card slot**

⑥ **Card slot cover**

⑦ **In-camera (lens)**

⑧ **Receiver**

Hear the other party's voice during a call, played-back auto answering messages, etc.

⑨ Incoming light/charging light

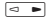
Lights in red while charging.
Blinks according to settings for incoming call/mail.

⑩ Proximity sensor/light sensor

When holding product up during a call, the proximity sensor turns the screen off to prevent erroneous touch panel operation.
Light sensor detects the ambient light level to adjust the display brightness.

⑪ Display (touch panel)

⑫ Volume UP/DOWN button

Adjusts sound volume. Press and hold  (Volume DOWN button) to set "Silent mode" (▶P.81).

⑬ Power button

Power ON/OFF, activate/deactivate Sleep mode, etc.

⑭ Microphone

Transmits your voice to the other party during a call. Or used for recording the voice sound. Take care not to cover the microphone with your fingers during a call or recording a video.

⑮ External connection terminal

Used for connecting Common AC Adapter 05 (sold separately), microUSB cable 01 (sold separately), etc.

⑯ Built-in GPS/Bluetooth®/Wi-Fi® antenna area*

⑰ Photo light/Simple light/Personal alarm flash

⑱ Built-in main antenna*

⑲ Built-in sub antenna*

⑳ Speaker

Ringtone or alarm sound can be heard from here.

㉑ Out-camera (lens)

* Do not cover antennas with your hand or put stickers etc. It might affect communication quality.



memo

- Do not adhere stickers, etc. on the proximity sensor/light sensor.
- The back cover is not removable. Trying to remove the back of the product may result in damage or malfunction.
- The product battery is built in and cannot be removed by the customer. To force shutdown the product and restart it, refer to "Forcing shutdown and restarting" (▶P.51).

Personal alarm

The product can be used as a personal alarm.
When the personal alarm is activated, it can automatically report the current location, take and then send photos with the cameras, and allow a phone call to be made to emergency contacts.

Starting personal alarm operation

1 (press and hold for at least 2 seconds)

The product vibrates and the personal alarm standby screen is displayed.

2 While the screen is displayed, [Start] or again


An alarm screen is displayed, and the personal alarm operates according to the settings in "Personal alarm settings" (► P.63).

■ Personal alarm operation

- If "Personal alarm sound" is on, a buzzer sounds at high volume. Do not hold the product close to ears.
- If "Personal alarm flash" is on, the personal alarm flash flashes.
- If "Send Location information" is on, the location is mailed to registered parent/guardian contacts.
- If "Send still pictures" is on, 5 seconds after* the alarm is first activated, the product automatically takes 4 photos with the out camera and 1 photo with the in camera, and mails them to registered parent/guardian contacts.
 - * If a call is made while the cameras are counting down, photos are taken after the call is ended.
- If "Automatic phone call" is on, the product automatically dials a registered parent/guardian contact. If there is no response in about 45 seconds after there is a ringback tone, the product dials the next contact.
For details on registering parent/guardian contacts, refer to "Specifying parent/guardian contact list" (► P.64).

■ Dialing a parent or guardian manually while the personal alarm is activated

- While the personal alarm is activated, tap "To parent" to dial the contact registered as parent/guardian contact 1.

- Tap "Emergency list" to display the contacts list (110 (Police), 119 (Rescue), or 118 (Coast Guard), parent/guardian contact 1/2/3/4/5/6*). Tap  of the contact you want to dial.

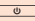

* Not displayed if phone numbers are not registered as parent/guardian contacts.

■ Stopping the personal alarm

1 While the personal alarm is activated, (press and hold for at least 3 seconds)



memo

- If there is no operation for 10 seconds after the personal alarm standby screen is activated, the personal alarm stops.
- Even if "Personal alarm sound" is set to on, the alarm stops sounding during a call. Once a call is ended, the alarm sounds again; immediately hold the product away from ears.
- While the alarm screen is displayed, , and  (Volume UP/DOWN button) cannot be operated.
- Caution: If the power is not turned on, the personal alarm cannot be activated.
- Caution: The personal alarm will activate in the following situations, however, voice calls and mail notification cannot be made to parent/guardian contacts.
 - When no au IC Card is installed
 - When out of service area

- ◎ Operating the personal alarm uses up more battery, and may prevent the camera from capturing images to send depending on the amount of battery.
- ◎ If "COCO-SECOM settings" (▶ P.65) is on, the COCO-SECOM application activates and COCO-SECOM starts operating (subscription required for using COCO-SECOM).

Personal alarm operation

- ◎ Once the "Send Location information", "Send still pictures", and "Automatic phone call" functions are on, the following customer information is sent from the product to inform registered parent/guardian contacts that it is an emergency.
 - Location
 - Image content
 - Contacts (phone number)
- ◎ Once the "Send Location information", "Send still pictures", and "Automatic phone call" functions are on, the following settings are automatically enabled to allow sending of customer information.
 - Location
 - Data transmission

The following settings are also disabled.

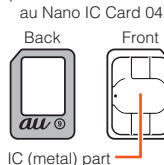
 - Set cellular data limit
 - Airplane mode

* Settings do not return to as before the personal alarm was activated; make settings again as required.
- ◎ The personal alarm cannot be activated in the following situations.
 - During a software update
 - While "Lookout for au" is locked
 - While the screen is displayed for entering the PUK code

au IC Card

The au IC Card contains customer phone number and other information.

The product is compatible with au Nano IC Card 04.



memo

- ◎ Note the following while handling the au IC Card. Otherwise, handling may cause malfunction or damage of the card, tray, or product.
 - Do not touch the IC (metal) part of the au IC Card.
 - Insert in the correct direction.
 - Do not use forcibly install or remove.
- ◎ An error message is displayed for an improperly installed or abnormal au IC Card.
- ◎ Do not lose the au IC Card after it has been removed.
- ◎ Do not insert the au IC Card held in a card adapter. Doing so may cause malfunction.

■ If the au IC Card is not inserted

If the au IC Card is not inserted, the following operations are not possible. "❓" is also displayed in the status bar.

- Making*/accepting a call
- Sending/receiving SMS
- Making initial settings for and sending/receiving e-mail (@ezweb.ne.jp)
- SIM card lock settings
- Checking the product's phone number and e-mail address

In addition to the above operations, functions requiring customer phone number, etc. may also be unavailable.

* Emergency calls also cannot be made to 110 (Police), 119 (Fire/Ambulance), or 118 (Maritime rescue).

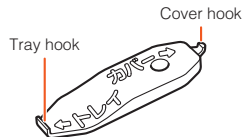
■ Restricting product use with a SIM PIN

To protect valuable personal information on your au IC Card, you can change the SIM PIN and lock the SIM card to restrict use by other persons (▶ P.34 "SIM PIN").

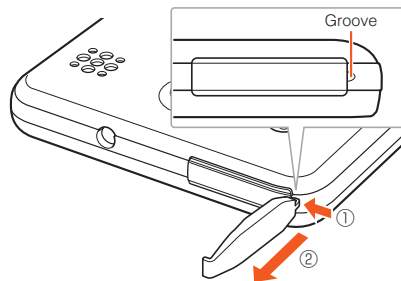
■ Attaching au IC Card

Before installing the au IC Card, completely turn off the product. Also, always remove the microUSB plug of a specified AC adapter, etc. from the product.

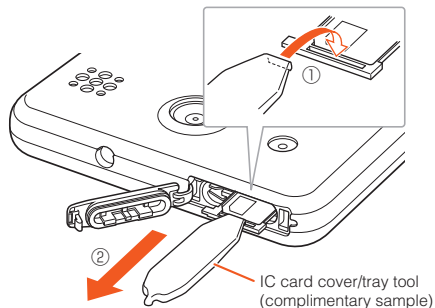
- Install the au IC Card after removing any microSD memory card from the product.
- Always use the supplied IC card cover/tray tool (complimentary sample) to install the au IC Card.



- 1 Completely turn off the product, place the cover hook of the supplied IC card cover/tray tool (complimentary sample) in the groove in the card slot cover, and pull the cover straight out



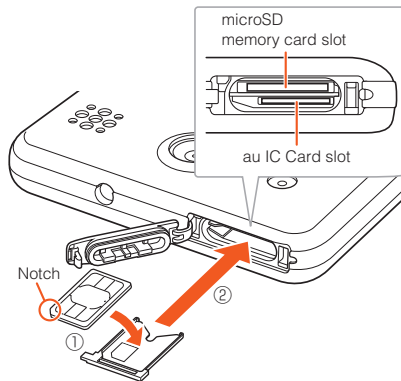
- 2 Place the tray hook of the supplied IC card cover/tray tool (complimentary sample) on the edge of the tray, and pull the tray out**



- 3 Place the au IC Card in the tray with its notch in the correct orientation, and push the tray straight into the au IC Card slot**

With the tray inserted in the product, place the tray hook of the supplied IC card cover/tray tool (complimentary sample) on the edge of the tray, and push all the way in.

- Push straight all the way in gently so that the au IC Card does not ride up on the tray. If tray does not insert, do not force it; remove tray, slightly tilt its end upward and insert again. If the au IC Card rides up on the tray, the product cannot recognize it.

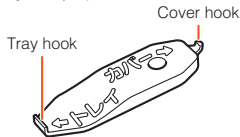


- 4 Close the card slot cover (► P.28)**

Removing au IC Card

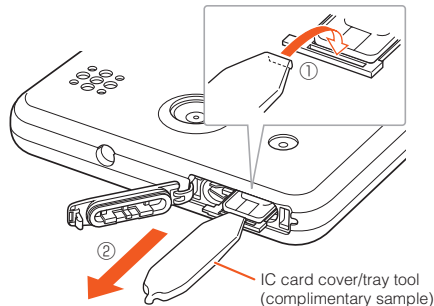
Before removing the au IC Card, completely turn off the product. Also, always remove the microUSB plug of a specified AC adapter, etc. from the product.

- Remove the au IC Card after removing any microSD memory card from the product.
- Always use the supplied IC card cover/tray tool (complimentary sample) to remove the au IC Card.

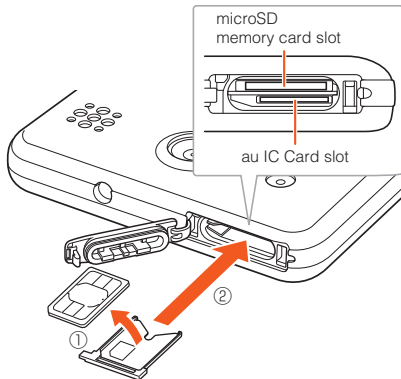


- 1** Completely turn off the product and open the card slot cover (► P.43)

- 2** Place the tray hook of the supplied IC card cover/tray tool (complimentary sample) on the edge of the tray, and pull the tray out



- 3** Remove the au IC Card, and push the tray straight into the au IC Card slot



- 4** Close the card slot cover (► P.28)

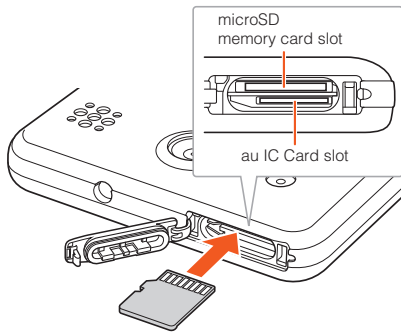
Attaching/Removing a microSD memory card

Attaching a microSD memory card

- Always use the supplied IC card cover/tray tool (complimentary sample) to open the card slot cover.

- 1** Open the card slot cover (► P.43)
- 2** Confirm the direction of the microSD memory card and slowly insert it into the slot until it clicks

Insert a microSD memory card until you hear a click and confirm it is locked. Releasing the microSD memory card before it is locked may cause it to pop out.



3 Close the card slot cover (► P.28)



memo

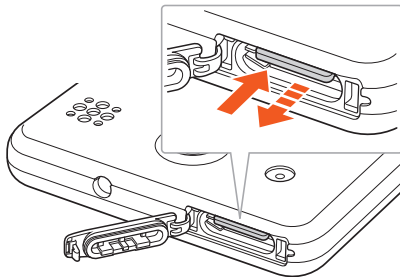
- ◎ Insert a microSD memory card with the right side up in the appropriate direction. Inserting a microSD memory card forcefully into the slot could result in failure to remove the microSD memory card or damage to the microSD memory card.

Removing a microSD memory card

- Always use the supplied IC card cover/tray tool (complimentary sample) to open the card slot cover.

- 1 Home screen → [Parental settings] → Enter parental password → [OK]
- 2 [Other settings] → [Phone settings] → [Storage] → [▲]
- 3 Open the card slot cover (► P.43)
- 4 Push the microSD memory card in gently until it clicks

Once it clicks, let it come back out while holding it with your finger. Releasing finger while card is pressed in tightly may allow it to pop out of the product.



5 Slowly remove the microSD memory card

Slowly pull the microSD memory card straight out. Some microSD memory cards cannot be unlocked and do not come out smoothly. In such case, pull it out with your finger.

6 Close the card slot cover (► P.28)



memo

- ◎ Do not touch the terminal part of microSD memory card.
- ◎ Do not remove the microSD memory card forcefully. It may result in damage to the microSD memory card or the data loss.
- ◎ The microSD memory card may be warm after a long time use. It is normal.
- ◎ Before removing the microSD memory card, be sure to unmount it to prevent data from loss (deletion).

Charging

When you purchase your product, the battery pack is not fully charged. Make sure to charge the battery pack before use. When the charging light in red turns off, charging is complete.



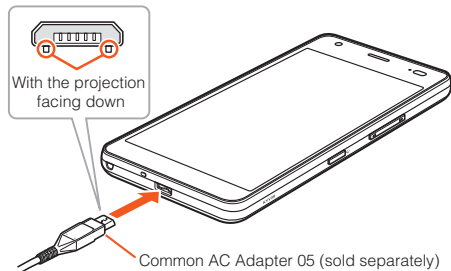
memo

- ◎ The product may become warm while charging, depending on the situation, but this is not abnormal.
- ◎ Charging while using camera etc. may take longer.
- ◎ When you operate the product with the specified charger (sold separately) connected, the product may repeat short-time charging/discharging resulting in short battery life.
- ◎ Charging may stop if the surrounding temperature or the temperature of the product is extremely high or low. Charge as much as possible in normal temperature conditions.
- ◎ If the charging light blinks in red, check if connections, etc. are correct. If the light keeps blinking, stop charging and then contact an au shop or Repair and Delivery Service Center.
- ◎ The charging light may not immediately go out even after "■" appears during charging, but it will go out shortly to complete charging.
- ◎ Do not allow conductive foreign objects (metal fragments, pencil leads, etc.) to come into contact with or get inside the connection terminals.

Charging with a specified AC Adapter (sold separately)

Charging with Common AC Adapter 05 (sold separately) is explained. For information on specified AC adapters (sold separately), see "Peripheral devices" (►P.101).

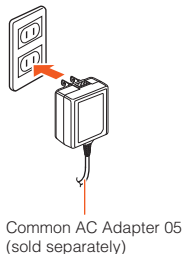
- 1 Check the orientation of the microUSB plug of Common AC Adapter 05 (sold separately) and insert it straight into the external connection terminal**



- 2 Insert the power plug of Common AC Adapter 05 (sold separately) into an outlet (100 VAC to 240 VAC)**

Check that the charging light on the product lights in red. When the battery power turns on, "⚡" appears on the status bar.

When charging ends, the charging light turns off.



- 3 When charging ends, pull out the microUSB plug of Common AC Adapter 05 (sold separately)**
- 4 Pull out the power plug of Common AC Adapter 05 (sold separately) from the outlet**

**memo**

- ◎ Note that applying unnecessary force with the external connection terminal connected to the external device might cause damage.
- ◎ When charging starts with the battery empty, the charging light may not light immediately. But charging has started.

Turning the power on/off

Turning the power on

1 (press and hold for at least 2 seconds)

Unlock the security when the start screen is displayed.

- When turning on the power for the first time, initial settings appear. Make settings as required referring to "Making initial settings" (▶P.51).

**memo**

- ◎ While logos are displayed after the power is on, initial settings for touch panel are in process. Do not touch the screen. The touch panel may not work properly.
- ◎ If the charging light blinks in red when you turn the power on, the remaining battery is not sufficient for activating the product. Charge the battery before use.

Turning the power off

1 (press and hold for at least 1 second)

2 [Power off] → [OK]

**memo**

- ◎ If "Fake power off" mode is set, the product turns off in Fake power off mode (▶P.65).

- ◎ To completely turn the product off regardless of the Fake power off setting, use "Normal power off" (▶ P.63).

Forcing shutdown and restarting

Force shutdown and restart the product when the screen freezes or the power cannot be turned off.

- 1** Press and hold  and  (Volume UP button) for at least 11 seconds



memo

- ◎ If the product is forced shutdown and restarted, unsaved data will be erased. Do not force shutdown except when the product becomes inoperative.

Making initial settings

When turning on the power for the first time after purchasing the product, follow the onscreen instructions to make settings for language, functions, services, etc.

- To skip settings, tap "SKIP", "NEXT", etc. at each procedure and follow the onscreen instructions.

1 [開通試験 (Opening testing)]

The product automatically dials "111", and a message is displayed indicating the line has been opened.



2 []

3 [留守番電話の停止 (Disable voicemail)]/[ボイスメールの停止 (Disable voice message)] → []

Make settings according to the guidance.

- 4** After completing all the settings, [次へ (Next)]
- 5** Tap "日本語 (Japanese)", [English] → [👉]
- 6** Make Wi-Fi network settings
- 7** Make settings for an increased number of terminals
- 8** Make Google account settings
- 9** Set your name
- 10** Set up mail
- 11** Make smartphone protection settings
- 12** Check Google service settings
- 13** Make location information settings
- 14** [GO TO HOME] → [OK]

- If a confirmation screen is displayed for using au Basic Home, follow the onscreen instructions.

Switching to English display

- 1** Home screen → [保護者メニュー (Parental settings)] → Enter the parental password → [OK] → [その他の設定 (Other settings)] → 端末の設定 (Phone settings) → [言語と入力 (Language & input)] → [言語 (Language)] → [English] → [OK]

Preparing the product for the child

Before letting the child use the product, the parent or guardian should make the following settings to ensure the child can use the product safely.

- 1** Home screen → [Introduction]
- 2** Register parent/guardian contacts → [NEXT]
Set contacts to notify when the personal alarm sounds or when there is an important notice from the product. Register parent or guardian name/phone number/e-mail address.
 - The parent's or guardian's phone number and e-mail address are registered as parent/guardian contact 1.
 - Register the e-mail address after entering it correctly including the domain after the "@" mark.
 - Enter any 4- to 17-character combination (letters or numbers) for the parental password.

Parental info settings

Register parental information in order to use personal alarm and restrict function.

Add parental contacts

Location information and photos from personal alarm can be sent to them.

Name
Hanako Kyocera

Phonetic name
Hanako Kyocera

BACK NEXT

3 Set the filtering levels → [NEXT (AGREE)]

Restrict level settings

Filter a website and application by school age.

On having you use filtering settings, Please confirm.
License: Since by using this function, it is considered that it was agreed to Terms of Use by starting the use.

☒ Elementary school
☐ Junior high school
☐ High school

BACK NEXT (AGREE)

4 Check restriction function settings → [NEXT]

- Recommended values for set restriction levels are displayed.
- Tap "EDIT" to change settings for each function (recommended values for restriction levels remain the same). For details on making settings, refer to "Restricting/Permitting functions" (▶P.58).

Restrict functions

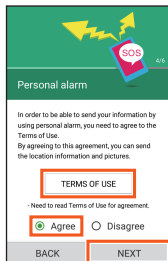
Restrict functions for children(red:Changed)

Restrict apps	ON
Restrict to access website	ON
Restrict call/mail	ON
Safety character input settings	ON

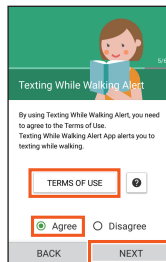
BACK NEXT

5 Tap "TERMS OF USE" and check personal alarm terms of use → [OK] → [Agree] → [NEXT] → [OK]

- By agreeing to terms of use, the product operates with "Personal alarm sound", "Personal alarm flash", "Send Location information", and "Send still pictures" set to on.
- If you do not agree to terms of use, the product operates with "Personal alarm sound" and "Personal alarm flash" set to on.
- If agreement for improving the accuracy of location information is displayed, follow the onscreen instructions. Use of IZat is recommended for improving the accuracy of location information when using the personal alarm.

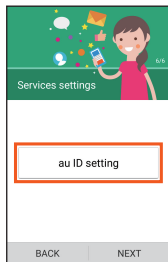


6 Tap "TERMS OF USE" and check terms of use for using the smartphoning-while-walking prevention application → [⏪] → [Agree] → [NEXT] → [OK]



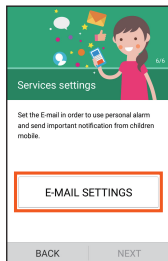
7 Tap "au ID setting" and set your au ID

- For details on setting your au ID, refer to "Setting an au ID" (▶ P.57).

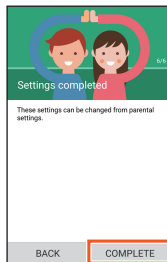


8 Tap "E-MAIL SETTINGS" and make e-mail settings

- Once your e-mail address is set and displayed, tap "閉じる (Close)".

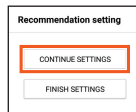


9 [COMPLETE]



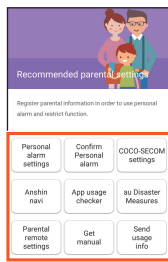
10 [CONTINUE SETTINGS]

- To skip recommended settings, tap "FINISH SETTINGS".



11 Select options to set

- After completing settings, tap .



Personal alarm settings	▶ P.63 "Making security settings"
Confirm Personal alarm	Practice making the personal alarm sound.
COCO-SECOM settings ^{*1}	▶ P.65 "Setting COCO-SECOM"
Anshin navi ^{*2}	Use Security Navi (quickly find/keep an eye on the child's location using the GPS function).

App usage checker	Check how much time the child uses the smartphone daily. Use when guiding the child on smartphone use.
au Disaster Measures	Application allowing you to operate au Disaster Measures services all from a single application.
Parental remote settings	▶ P.68 "Making parental remote settings"
Get manual	Send the URL to access the operating instructions top page to parent/guardian contact.
Send usage info	Set whether to send information on product usage.

^{*1} Subscription required for using COCO-SECOM.

^{*2} Use of Security Navi requires membership beforehand by the person searching (parent or guardian).

For details and registration of Security Navi, refer to the following.

<https://www.anshinnavi.auone.jp/lwp/view/index.html>
(Japanese)

Setting an au ID

- 1 Home screen → [au Supports] → [au ID Setting]**
- 2 [au IDの設定・保存 (Set/save au ID)]**
Start authentication.
- 3 Follow the onscreen instructions and set the au ID**
If you already have an au ID, the au ID is set.
If you do not already have an au ID, register a new au ID.
Follow the onscreen instructions.

Parental settings

The product features parental settings for a parent or guardian to make settings.
A parent or guardian should register information and make settings before letting the child use the product.

Displaying the parental settings

- 1 Home screen → [Parental settings]**
A screen for entering the parental password is displayed.
- 2 Enter the password → [OK]**
The parental settings is displayed.

Parental settings

Option	Setting	Page
Restrict functions	Restrict the length of time the product can be used as well as use of applications, sites, etc.	P.58
Security settings	Make personal alarm, COCO-SECOM, Fake power off, and other settings.	P.63
Parental info settings	Change the parental password and set parent/guardian contacts.	P.66

Filtering level settings	Set age-appropriate filtering levels for the child.	P.67
Parental remote settings	Make settings to allow a parent or guardian to operate the product remotely.	P.68
Other settings	Make e-mail, privacy, initialization, and other settings.	P.69

■ Authenticating with the parental password

To allow a child to use restricted Contacts entries or applications, the parental password can be entered to cancel restrictions.



memo

- Enter letters and numbers, from 4 to 17 characters in length, for the parental password. Both letters and numbers must be used.
- Entering an incorrect parental password five times causes a temporary cancellation password to be sent to the e-mail address registered for the first parent/guardian contact.
- In the following instances, the product reverts to its unauthenticated state.
 - Returning to the Home screen
 - The display turns off
 - A call arrives
 - A set alarm sounds
 - An application is activated from the recent apps or notification panel

If the product reverts to its unauthenticated state while using Parental settings, the product returns to the screen before the product is authenticated. Enter the parental password to resume with Parental settings.

■ Restricting/Permitting functions

Restrict the length of time the product can be used as well as use of applications, sites, etc.

1 Parental settings → [Restrict functions]


The Restrict functions menu is displayed.

2 Restrict use time	▶ P.60 "Restricting the time the terminal can be used"
Restrict apps	▶ P.60 "Restricting/permitting applications"
Restrict to access website	▶ P.61 "Restricting/permitting website access"
Restrict call/mail	▶ P.61 "Restricting/permitting persons that calls and mail can be exchanged with"
Safety character input settings	▶ P.62 "Making safe text input settings"
Restrict Wi-Fi	▶ P.62 "Restricting use of Wi-Fi®"

■ Screen display when restrictions are in place

The screen indicates when restricted functions are trying to be used.

Restrict use time		
• Restriction period for use	• Available time per day	• Call time per day
<div>Restriction on use</div> <p>Application is restricted by set as restriction period for use. Please ask parent for using it.</p> <p>OK</p>	<div>Restriction on use</div> <p>Application is restricted by set as available time per day. Please ask parent for using it.</p> <p>OK</p>	<div>Restriction on use</div> <p>Call is prohibited by call time restriction. Please ask parent for using it.</p> <p>OK</p>

Restrict apps	Restrict to access website	Restrict call/mail
<div><div>Restriction on use</div><div>Failed to launch application due to restriction. Please get allow from parent to use.</div><div>PASS PHONE TO PARENT</div><div>SEND E-MAIL TO PARENT</div></div>	<div><div>Restriction on website</div><div></div><div>Access point: https://jr_aunon.jp/app/index/category_id/001007/p_category_id/0010m_category_id/001005 Access to website is restricted by restriction on website. Please get allow from parent to use.</div><div>PASS PHONE TO PARENT</div><div>SEND MAIL TO PARENT</div></div>	<div><div>Restriction on use</div><div>Call and mail are restricted by call and mail restriction. Please get allow from parent to use.</div><div>PASS PHONE TO PARENT</div><div>DON'T USE</div></div>
Safety character input settings	Restrict Wi-Fi	
<div><div>Just check word!</div><div>Input word may be unsuitable word. Still are you input? If you want to use that word, save it in a input history.</div><div>Unsuitable word:baka</div><div>USE</div><div>NOT USE</div></div>	<div><div>Wi-Fi</div><div>ON</div><div>Wi-Fi restriction is enabled. Remove Wi-Fi restriction from Parental settings > Restrict functions > Restrict Wi-Fi.</div></div>	

* Screen shown is an example only.

■ Restricting the time the terminal can be used

Set the time of day, amount of time calls can be made, etc.

1 Restrict functions menu → [Restrict use time]

■ Setting the time of day for restricting use

2 Tap "OFF" for "Restriction period for use" to turn "ON"

3 [Restriction period for use] → Tap the day, and set the time of day for restricting use

- Tap "Set available app during restricted" to set applications that can still be used during the restricted time of day.
- Checkmark "Restrict holiday available time the same as Sunday" to use the setting for Sundays also on holidays.

■ Set the amount of time per day usage is allowed

2 Tap "OFF" for "Available time per day" to set "ON"

3 [Available time per day] → Tap the time → Select the usable time per day → [OK]

- Tap "Set available app during restricted" to set applications that can still be used even after the allowable time is passed.

■ Set the amount of time per day calling is allowed

2 Tap "OFF" for "Call time per day" to set "ON"

3 [Call time per day] → Tap the time → Select the callable time per day → [OK]



memo

- Both dialed calls and received calls are included in "Call time per day".
- Calling with parent/guardian contacts is not included in "Call time per day".

■ Restricting/permitting applications

Restrict usage per each application.

1 Restrict functions menu → Tap "OFF" for "Restrict apps" to set "ON"

2 [Restrict apps] → Tap "OK"/"NG" for application to restrict/permit Tap to toggle restricted/permitted.



memo

- For other details on whether usage of applications can be restricted, refer to the corresponding item in "List of main applications" (▶ P.75).

■ Restricting/permitting website access

Set sites you want to restrict or allow individually.

- You can register web pages displayed in the browser.

1 Restrict functions menu → Tap "OFF" for "Restrict to access website" to set "ON"

2 [Restrict to access website] → [:] → [Restriction list]

3 [OK]/[NG]

Tap to toggle permitted/restricted.

- Tap a site → [✎] to edit the title or URL.



memo

- Website filtering can only be set from the standard installed browser.

■ Restricting/permitting persons that calls and mail can be exchanged with

Restrict calling and mailing only to persons registered in Contacts and with whom it is permitted.

1 Restrict functions menu → Tap "OFF" for "Restrict call/mail" to set "ON"

2 [Restrict call/mail] → Tap "OK"/"NG" of contact you want to restrict/permit

- "Parental pending" is displayed for newly added contacts (those not yet checked by a parent or guardian). Tap contacts that have not yet been checked to set "DISALLOW"/"ALLOW".



memo

- Destinations registered as parent/guardian contacts can be used even if "Restrict call/mail" is set to "ON".
- Even if "Restrict call/mail" is set to "ON", the child can tap "Emergency list" when the personal alarm is activated to dial 110 (Police), 119 (Fire/Ambulance), 118 (Maritime rescue), or parent/guardian contacts (6 destinations such as a parent or guardian).
- If a call arrives from a contact set as "NG" with "Restrict call/mail", the product handles it in the same way as a call restriction.

■ Making safe text input settings

A confirmation screen is displayed when the child enters inappropriate language when using the Internet, mail/SMS, etc.

1 Restrict functions menu → Tap "OFF" for "Safety character input settings" to turn "ON"

2 "Safety character input settings"

3	Input history	Check entered inappropriate words and frequency. • Tap [!] → [Reset History] → [OK] to delete history.
	Register unsuitable word	Register inappropriate words.



memo

- ◎ Safe text input only operates when using iWnn IME. It will not operate if you are using any other text input application.

■ Restricting use of Wi-Fi®

Restrict usable Wi-Fi® access points.

1 Restrict functions menu → Tap "OFF" for "Restrict Wi-Fi" to turn "ON"

2 [Restrict Wi-Fi] → Tap "OK"/"NG" of access point to restrict/permit

Tap to toggle permitted/restricted.

Tap "EDIT NETWORK" to make network settings.

- For details on connecting to Wi-Fi®, refer to "Wireless LAN (Wi-Fi®) function" (▶ P.86).



memo

- ◎ Even if you restrict use of Wi-Fi with this setting, connection to au Wi-Fi SPOTs is not restricted. Change the au Wi-Fi接続ツール (au Wi-Fi connection tool) setting from "Restrict apps".

Making security settings

Make settings for personal alarm, COCO-SECOM, Fake power off, etc.

1 Parental settings → [Security settings]

The security settings menu is displayed.

2 Personal alarm settings*1	▶ P.63 "Making personal alarm settings"
COCO-SECOM settings	▶ P.65 "Setting COCO-SECOM"
Fake power off	▶ P.65 "Using fake power off"
E-mail notification of fake power off*2	▶ P.65 "Using fake power off"
Normal power off	Turns the product completely off regardless of the Fake power off setting.

*1 Cannot be set if "COCO-SECOM settings" is on.

*2 Cannot be set if Fake power off is off.

Making personal alarm settings

Mail location information and images taken by the cameras (out camera 4 photos/in camera 1 photo) automatically to the registered parent/guardian contacts if the personal alarm is activated.

Options can be set individually.

1 Security settings menu → [Personal alarm settings]

- By agreeing to terms of use, the product operates with "Personal alarm sound", "Personal alarm flash", "Send Location information", and "Send still pictures" set to on.

2 Personal alarm sound	Set whether the personal alarm sounds when the personal alarm is activated.
Personal alarm flash	Set whether the personal alarm flash flashes when the personal alarm is activated.
Send Location information	Set whether the location is automatically sent by e-mail to parent/guardian contacts 1 to 6 when the personal alarm is activated.
Send still pictures	Set whether the images taken with the cameras are automatically sent by e-mail to parent/guardian contacts 1 to 6 when the personal alarm is activated.

Automatic phone call	Set whether a voice call is automatically dialed to parent/guardian contacts 1 to 6 when the personal alarm is activated.
Set parental contacts list	Set the parent/guardian contact list.
Confirm Personal alarm	See how the personal alarm works when activated.
Terms of use	Display terms of use.



memo

- If "Send Location information" and "Send still pictures" are set on, "Set cellular data limit" switches off.

E-mail that is sent when sending location information/ images

- Location information and images are sent as separate e-mail. The message "【緊急】お子様の携帯の防犯ブザーが作動しました。(位置情報)／(画像情報)" ([Emergency] The child's personal alarm has activated. (Location)/(Image)) appears in the subject line of the e-mail.
- The 5 images sent by Send still pictures are sent together as mail attachments.
- If e-mail is not able to be sent when the personal alarm is activated, it is automatically sent when e-mail can be sent.

■Specifying parent/guardian contact list

Register up to 6 parent/guardian contacts to which the product will send location information and images as well as automatically call when the personal alarm is activated.

1 Security settings menu → [Personal alarm settings] → [Set parental contacts list]

A screen for setting parent/guardian contacts is displayed.

2 [Add from contacts] → Tap a contact to add

- Tap "Create new contact" to register a contact to Contacts and then add it as a parent/guardian contact.
- Tap a parent/guardian contact to unregister it as a parent/guardian contact or register again with a different contact.



memo

- New or additional parent/guardian contacts cannot be registered once 6 are registered. To register a new parent/guardian contact, first delete one that is already registered, and then register the additional one.
- Parent/guardian contact 1 cannot be unregistered if no phone number/e-mail address is registered for parent/guardian contact 2.
- A contact remains registered in Contacts even if deleted from parent/guardian contacts.

■ Setting COCO-SECOM

Set the product's COCO-SECOM alarm to activate instead of the personal alarm if the personal alarm button is pressed (held for at least ½ a second) and notify SECOM.

- Subscription required for using COCO-SECOM.
- If activated with the COCO-SECOM alarm function, it does not operate by the settings in "Personal alarm settings" (▶ P.63).

1 Security settings menu → [COCO-SECOM settings]

2 Turn "セコムへ通報 (notify Secom)" on (●)

■ Set product to sound COCO-SECOM alarm

If "セコムへ通報 (notify Secom)" is on, sound the COCO-SECOM alarm to notify Secom.

- Can be set when "セコムへ通報 (notify Secom)" is on (●).

1 Security settings menu → [COCO-SECOM settings] → Turn "ココセコム防犯ブザー音 (COCO-SECOM safety buzzer)" on (●)



memo

- ◎ Note that the product may not be able to obtain location information when using COCO-SECOM if "Location" is set to off or "Mode" in "Location" is set to "Device only".

■ Using fake power off

With fake power off set, even when the power is turned off, a parent or guardian can get location information, cause the personal alarm to sound in an emergency, etc.

- Fake power off is set to off at time of purchase.
- If fake power off is set and the product is turned off, the product operates as it would with its power off, except for the following instances where the power turns on.
 - Earthquake Early Warning and Disaster Information was received
 - The personal alarm button was pressed (for at least ½ a second)
 - A call arrived from the COCO-SECOM operation center or an emergency number (110, 119, 118)
- A parent or guardian can also get location information.

1 Security settings menu → Checkmark "Fake power off"

■ Causing e-mail to be sent to a parent/guardian contact when the product is turned off while fake power off is set

1 Security settings menu → Checkmark "E-mail notification of fake power off"



memo

- ◎ The parent or guardian should turn the power completely off beforehand where it must be turned off (in hospitals, aboard aircraft, etc.) (▶ P.63 "Normal power off").

Making parental info settings

Change the parental password and set parent/guardian contacts.

1 Parental settings → [Parental info settings]

The parental info settings menu is displayed.

2 Change parental password	▶ P.66 "Changing the parental password"
Set parental contacts list	▶ P.66 "Adding parent/guardian contacts"

Changing the parental password

1 Parental info settings menu → [Change parental password]

2 [Security type] → [Password]/[pattern]

3 Enter new parental password/pattern → [CONTINUE]

4 Enter new parental password/pattern again → [OK]/[CONFIRM]

The new parental password is set.

Extending the settings access time

Set the settings to remain accessible for 10 seconds after navigating to a different screen from the parental settings (⏏, ⏪, etc.).

1 Parental info settings menu → [Change parental password]

2 Checkmark "Extension of unlock state"

Adding parent/guardian contacts

Register up to 6 parent/guardian contacts to which the product will send location information and images as well as automatically call when the personal alarm is activated.

1 Parental info settings menu → [Set parental contacts list]

A screen for setting parent/guardian contacts is displayed.

2 [Add from contacts] → Tap a contact to add

- Tap "Create new contact" to register a contact to Contacts and then add it as an parent/guardian contact.



memo

- © New or additional parent/guardian contacts cannot be registered once 6 are registered. To register a new parent/guardian contact, first delete one that is already registered, and then register the additional one.

- ◎ Parent/guardian contact 1 cannot be unregistered if no phone number/e-mail address is registered for parent/guardian contact 2.
- ◎ A contact remains registered in Contacts even if deleted from parent/guardian contacts.

■ Unregistering from parent/guardian contacts

- 1 Screen for setting parent/guardian contacts**
 - Tap parent/guardian contact to unregister
 - [Remove] → [OK]



memo

- ◎ Parent/guardian contact 1 cannot be unregistered if no phone number/e-mail address is registered for parent/guardian contact 2.
- ◎ A contact remains registered in Contacts even if deleted from parent/guardian contacts.

Making filtering level settings

Set an age-appropriate filtering level for the child for using applications and accessing websites.

1 Parental settings → [Filtering level settings]

A menu for setting filtering levels is displayed.

2 Application filtering	Set an age-appropriate filtering level for applications that can be activated. Check all (parental check)/ Elementary school/Junior high school/High school
Web filtering	▶ P.68 "Restricting access to harmful sites"
What filtering level is	Visit a site regarding filtering levels.
License Terms of Filtering	Displays a license for using the filtering function.

■ Restricting access to harmful sites

Restrict Internet use.

1 Filtering level settings menu → [Web filtering]

2 [Elementary school]/[Junior high school]/[High school]

Elementary school: For a child first using a smartphone or who has used one somewhat

Junior high school: For a child who mostly knows how to use a smartphone

High school: For a child who understands the rules, manners, and risks with using a smartphone



memo

- ◎ This product's filtering function restricts access to sites registered in the URL database provided by NetSTAR Inc., and does not restrict access by checking the content of sites as they are accessed. Sites may therefore be displayed although belonging to one of the above restriction categories.
- ◎ Website filtering can only be set from the standard installed browser.
- ◎ To enable "Application filtering" that you have set, tap Parental settings → [Restrict functions] → [Restrict apps] → [ⓘ] → [Follow the filtering level]. By enabling "Application filtering", settings made individually by a parent or guardian are disabled.

■ Making parental remote settings

A parent or guardian can use the "安心アクセス (safe access)" service and operate the product remotely to set/cancel filtering restrictions.

- "安心アクセス (safe access)" service allows a parent or guardian to set/cancel Application filtering and Web filtering on the child's smartphone from their smartphone or PC.

1 Parental settings → [Parental remote settings]

A menu for setting remote operation is displayed.

2 Register Parental remote settings	Make settings for allowing remote operation by a parent or guardian.
Release Parental remote settings	Unregister parental remote settings.
What Parental remote settings is	View a description of parental remote settings.

Making other settings

Make other settings such as e-mail privacy and initial settings.

1 Parental settings → [Other settings]

The other settings menu is displayed.

2 Phone settings	Make more detailed product settings.
Privacy setting of E-mail	► P.69 "Making e-mail privacy settings"
Initial settings	► P.52 "Preparing the product for the child"
Software update	► P.90 "Updating Software"

Making e-mail privacy settings

Set an e-mail password and set secrecy.

1 Other settings menu → [Privacy setting of E-mail]

- If an initial e-mail address has not been set, a settings screen is displayed. Follow the onscreen instructions to make initial settings.

2 Set password	<p>Set a password for folder locking and secrecy.</p> <p>Enter a folder unlock password (4 to 16 characters, letters or numbers) → [OK] → Enter same password again → [OK] → Select a secret question → [OK] → Enter the answer to the secret question → [OK]</p> <p>The secret question is displayed if the folder unlock password is entered incorrectly 3 times in a row. Tap [Proceed] → Enter the answer → [OK] to set a new password.</p>
Reset password	<p>Reset the password.</p> <p>Enter the folder unlock password → [OK] → [Reset]</p> <ul style="list-style-type: none">• Not selectable if a password is not set.• Resetting the password cancels folder locking and the secrecy function.
Secret	<p>Enable/disable the secrecy function.</p> <p>Enter a password → [OK]</p> <ul style="list-style-type: none">• Use after carefully reading the description of the secret mode that is displayed.• Not selectable if a password is not set.• Even if you enter a wrong password when enabling/disabling the secrecy function or temporarily canceling the secrecy function, no pop-up, etc. is displayed.

Preventing use of a smartphone while walking

Make settings for preventing smartphoning while walking.

1 Parental settings → [Other settings] → [Phone settings] → [Texting While Walking Alert]

- If a permission screen/terms of use are displayed, confirm content, and follow the onscreen instructions.

2 Turn "歩きスマホ注意アプリ (smartphoning-while-walking prevention app)" on ()

The smartphoning-while-walking prevention application turns on, and is able to detect any smartphoning while walking.

3 Making detailed settings for the smartphoning-while-walking prevention application

バイブレーション (vibration)	Set the product to vibrate when smartphoning while walking is detected.
表示アニメーション (display animation)	Set animation to catch your attention when smartphoning while walking is detected.
感度 (sensitivity)	Set how sensitive smartphoning-while-walking detection is.
ヘルプ (help)	Display help.

利用規約 (terms of use)	Display terms of use.
バージョン (version)	Display the version.



memo

- ◎ The smartphoning-while-walking prevention application is temporarily canceled if the personal alarm was activated or use restrictions have been canceled remotely (▶P.71).

Canceling use restrictions remotely

In case of disaster or other emergency, "Restricted period for use", "Available time per day", and "Restrict apps" can be temporarily canceled.

1 From a device (phone number) registered as a parent/guardian contact, send an SMS with "制限解除 (Cancel restriction)" entered in the text body

2 After receiving the SMS with the product, "ⓧ (Restriction was released)" is displayed in the notification panel

Use restrictions are temporarily canceled.

Ending temporary cancelation of restrictions

1 Open the notification panel and tap "ⓧ (Restriction was released)"

2 [OK]



memo

- Always enter "制限解除" using kanji in the SMS for canceling use restrictions.
- While restrictions are temporarily canceled, "Restricted period for use", "Available time per day", and "Restrict apps" settings are disabled. Settings cannot be changed. After ending temporary cancelation of restrictions, all settings are enabled.

Using alarm remotely

You can make the alarm sound and allow the product to be found more easily such as when the child loses it.

1 From a phone number registered as an parent/guardian contact, send an SMS in which you have entered "鳴らす (sound alarm (in kanji))" or "ならす (sound alarm (all hiragana))" in the text body

A remote alarm screen is displayed on the product, and the alarm sounds and the product vibrates.

Stopping the alarm

1 While the alarm is sounding, [STOP]



memo

- Always enter "制限解除" using kanji (do not enter "seigenkaijo", "せいげんかいじょ", etc.) in the SMS for canceling use restrictions.
- The alarm sounds and the product vibrates even in Silent mode.
- The alarm gradually gets louder, and continues for up to 1 minute.

Basic Operation

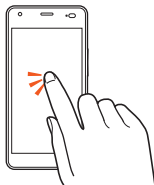
Using the touch panel

The product's display is a touch panel that can be used by touching directly.

- Operating the touch panel in the following ways may cause no response or misoperation.
 - With gloves on
 - With fingernails
 - With something placed on the screen
 - With a protective sheet or sticker on the screen
 - With water droplets or condensation on the display
 - Under water

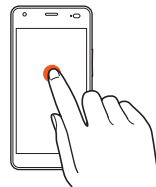
■ Tap/Double-tap

Lightly touch the screen and then immediately release your finger. To double-tap, tap the same location twice.



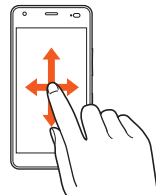
■ Long-touch

Keep touching an item or button.



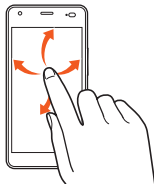
■ Slide

When content is partially hidden, lightly touch the screen and slide in the desired direction.



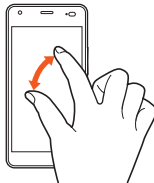
■ Swipe (flick)

Touch the screen and flick up/down/left/right.



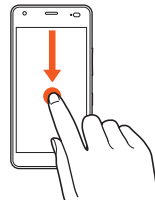
■ Zoom in/out

With two fingers on the screen, widen them and close them.



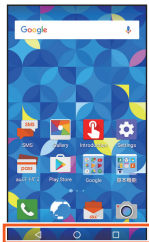
■ Drag

Lightly touch an item on the screen and slide it to a location on the screen.



Using the navigation bar

The navigation bar at the bottom of the screen has the following buttons.



⏮ (BACK button): Go back one screen. Tap "⏮" in a text entry or other screen to hide the current keyboard or menu.

⌂ (HOME button): Display the Home screen. Long-touch to display a Google Now on Tap window at the bottom of the screen.

☐ (RECENTS button): Display a list of recently used applications.

Using au Basic Home

"au Basic Home", allowing you to activate frequently used smartphone applications with one touch, is set as the Home screen at time of purchase.



《Home screen》

- ① **Status bar**
- ② **Search box (widget)**
- ③ **Shortcuts/widgets/folders**
- ④ **Indicator**
- ⑤ **Quick launch area**

Using applications

Tap an application icon to activate that application.

List of main applications

Installed applications are listed here. Some icons are located in folders.

- You can restrict usage of applications with a "○" under "Usage restrictable" by setting "Restrict apps" (▶ P.60) to "ON".

Where stored	Displayed icon name	Usage restrictable	Page
Quick launch area	Phone	×	P.82
	Browser	○	—
	E-mail	×	P.84
	Camera	○	P.88
Applications not stored in folders	SMS	×	—
	Gallery	×	P.88
	Introduction	×	P.52
	Settings	×	—
	auスマートパス (au Smart Pass) Allows you to get the most out of "au Smart Pass". Enjoy a bargain and worry-free smartphone life.	○	—
	Play Store	○	—
	Parental settings	×	P.57

Where stored	Displayed icon name	Usage restrictable	Page
Applications not stored in folders	au災害対策 (au Disaster Countermeasure) This is an application in which you can use Disaster Message Board, Emergency Rapid Mail (Earthquake Early Warning and Disaster and Evacuation Information, Tsunami Warning, Special Alert, and Flood Information), Disaster Voice Messaging Service, and disaster-related information.	×	—
	安心ナビ(探される) (Security Navi (device being searched for)) Allows you to confirm the child's location.	×	—
	ウイルスバスターfor au (VirusBuster for au)*1*2 Blocks improper applications and sites in order to protect young people.	×	—
	ココセコム (COCO-SECOM) Set the COCO-SECOM application to be activated together when using COCO-SECOM. Subscription required for using COCO-SECOM.	×	—

Where stored	Displayed icon name	Usage restrictable	Page
Applications not stored in folders	使い方ガイド (usage guide) Check detailed instructions on using the product, in images.	×	—
	App usage checker Check how much time the child uses the smartphone daily. Use when guiding the child on smartphone use.	×	—
Google	Google Use Google Search.	×	—
	Maps	×	—
	YouTube	○	—
	Photos Display/edit captured photos and videos or back them up to Google Drive.	○	—
	Play Music	○	—
	Play Movies & TV	○	—
	Voice Search Use Google Voice Search.	×	—
	Drive Save or share files to Google Drive.	○	—
	Hangouts	○	—
	Gmail	○	—
	Chrome View webpages.	○	—

Where stored	Displayed icon name	Usage restrictable	Page
基本機能 (basic functions)	Contacts	×	P.82
	Clock	×	—
	Weather Check weather forecasts for current location and a preset area.	○	—
	Calculator	×	—
	Notepad	×	—
	Flashlight	×	—
	カレンダーLifebear (calendar Lifebear)	○	—
auフォルダー (au folder)	au Market You can install Android-based applications offered with au Smart Pass service.	×	—
	スマホ教室 (smartphone classroom) Explains using animation things to note and other information for using a smartphone.	○	—
au Supports	au ID Setting	×	P.57
	Data Storage App You can back up various data in your smartphone to cloud storage or SD card. You can also migrate your data between your phones with this app.	×	—

Where stored	Displayed icon name	Usage restrictable	Page
au Supports	au Wi-Fi Connect It is an application to conveniently assist connection to au's publicly available wireless LAN service, "au Wi-Fi SPOT" and au's indoor Wi-Fi router, "Wi-Fi HOME SPOT".	×	—
	デジラアプリ (dejira app) Dejira App allows you to - check your remaining data amount - use the Data Charge service - use the Data Gift service - request your family to give you data amount	×	—
	故障受付 (Repair Receipt App) This app provides total support for customers whose smartphones are troubled(in Japanese only).	○	—
	Lookout for au "Lookout for au" enables you to locate and remotely lock your smartphone/tablet through the au Customer Center when your device is stolen or lost.	×	—

Where stored	Displayed icon name	Usage restrictable	Page
au Supports	リモートサポート (Remote Support) Call for technical supports on the phone operations by sharing the screen that you are watching with au operators.	×	—
Others Apps	Downloads Manage downloaded data.	×	—
	Eco Mode Set to maintain battery consumption at a minimum.	×	P.86
	File Commander	○	—
	Ultra Bluelight Cut Set a bluelight cut filter for easier-on-the-eyes display viewing.	○	—
	Sound Recorder	○	—
	OfficeSuite View Word, Excel, and other files.	○	—

*1 Requires download and installation.

*2 This application is deleted when performing "Factory data reset".



memo
















- When using the functions of each application, communication charges may result for some functions.
- Displayed icon names may change without notice.




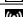






Monitoring the product's status

Icons

Notification icons appear on the left of the status bar, showing missed calls, new mail, operations in progress, etc., and status icons appear on the right, showing the status of the product.

Examples of main notification icon

Icon	Description
	Missed call
	New mail message (SMS)
	New mail message (E-Mail)
	New mail message (Gmail)
	New Emergency Rapid Mail
	Snoozed alarm/stopped alarm (still set)
	Music playing
	Making a call, calling, receiving a call
	Making a call, calling, receiving a call
	New message
	Available phone memory low
	Request from other Bluetooth® device to receive file
	Send/upload data
	Receive/download data
	Installation complete

Icon	Description
	Update available
	Software update
	Tethered by USB
	Tethered by Wi-Fi®
	Tethered by Bluetooth®
	Tethered simultaneously by Wi-Fi® or Bluetooth® and USB
	Eco Mode activated
	Screenshot captured
	microSD memory card mounted
	Use restricted

Examples of main status icon

Icon	Description
12:34	Time
	Battery level 100%/ empty/ charging
	Signal strength/Signal condition (LTE/WiMAX 2+) level 4/ out of range/ in communication LTE/WiMAX 2+ available*
	Airplane mode is set
	au IC Card uninserted
	Wi-Fi® signal strength level 4/ level 0
	Alarm set
	Silent mode (Vibrate) set
	Silent mode (Mute) set
	Bluetooth® in use standby/ connected
	Auto answering set set/ full
	VPN connected
	GPS in use

Notification panel

Slide down the status bar to display the notification panel. You can check details of notifications, activate corresponding apps, and quickly set frequently used functions on or off.



① Time/date area

② Screen brightness

Drag the slider left/right to adjust the screen brightness. Tap "Auto" to switch automatic brightness adjustment on/off.

③ ON/OFF icons

Set frequently used functions on/off.

- Long-touch "Wi-Fi" or "Bluetooth" to set Wi-Fi® and Bluetooth®.

④ ▼/▲ icons

Tap "▼/▲" to enlarge/shrink the ON/OFF icon area.

⑤ Notifications area

Check product status and notification details. Depending on the details, you can tap and activate corresponding applications.

⑥ Settings menu icon

Tap "⚙️" to display the settings menu.

⑦ Arrangement icon

Change the arrangement of ON/OFF icons.



memo

- ◎ Slide the notification panel upward to hide it.
- ◎ To delete a notification, flick it to the left/right. Tap "CLEAR ALL" at the bottom of the screen to delete all notifications. Some applications cannot be deleted.

Setting Airplane mode

When Airplane mode is set, all wireless functions are disabled (telephone, data transmission, wireless LAN (Wi-Fi®)/Bluetooth® functions).

1 Home screen → [Settings] → Tap "OFF" for "Airplane mode" to turn "ON"

Airplane mode turns ON, and "✈️" is displayed in the status bar.

- Alternatively, Home screen → [Parental settings] → Enter the parental password → [OK] → [Other settings] → "Phone settings" → [More] → Tap "OFF" for "Airplane mode" to turn "ON" to switch Airplane mode.



memo


- ◎ You can turn on wireless LAN (Wi-Fi®) /Bluetooth® functions even while Airplane mode is ON. Before using aboard an aircraft or in a hospital, check the instructions of each airline/facility.
- ◎ You cannot make calls when Airplane mode is ON. However, you can make calls to 110 (Police), 119 (Fire/Ambulance), and 118 (Maritime rescue). When making these calls, Airplane mode switches to "OFF", and remains off after the call is completed.
- ◎ You cannot receive calls when Airplane mode is ON. Exchanging e-mail, communication by wireless LAN (Wi-Fi®) or Bluetooth® functions, etc. is also off.
- ◎ Alternatively, (press and hold for at least 1 second) → [Airplane mode] to switch on/off.

Setting Silent mode

Set Silent mode so as not to inconvenience people around you in a public place.

1 Press and hold (volume down button) for at least 1 second


Silent mode is set on.

- Home screen → [Settings] → [Sound & notification] → Tap "ON"/"OFF" for "Silent mode" → [OK] to switch Silent mode.
- Press and hold  (volume down button) for at least 1 second in Silent mode to turn Silent mode OFF.

Changing the Silent mode type

1 In Silent mode, press (volume down button)

2 [Vibrate]/[Mute]


- Press  (volume down button) to toggle the type of Silent mode.
- Alternatively, Home screen → [Settings] → [Sound & notification] → [Silent mode type] → [Vibrate]/[Mute] to change the mode type.




《Screen in Silent mode》



memo

- ◎ Camera shutter, video recording start/stop tones, and timer tone still sound in Silent mode.
- ◎ When playing back a file with no sound in Silent mode, you may be able to adjust the volume by pressing  (volume up/down button) depending on the function.

Switching character entry

When entering text, you can switch the type of character entry by tapping the character entry key "  ". Tap to cycle the type of characters through hiragana/kanji, single-byte alphabet, and single-byte numbers.

Displaying menu

There are two types of methods to display a menu screen; by tapping " ⋮ " and by long-touching entry field or item.

Making a call

1 Home screen → [📞]

The phone number entry screen appears.

- If the RECENTS/FAVORITES screen appears, tap the "DIALPAD" tab.

2 Enter a phone number

When calling to a fixed-line phone, enter the phone number starting with the area code even if you are in the same area.

3 [🔊] → Call → [🔴]

Press [🔊] (Volume UP/DOWN button) during a call to adjust the call volume (the other party's voice).



memo

- If "Restrict call/mail" (▶ P.61) is "ON", calls can only be made to/received from contacts registered in Contacts that have been allowed by a parent or guardian.
If a call is initiated to a not-as-yet approved "pending" contact, a message is displayed indicating the call is prohibited.
- If "Call time per day" (▶ P.60) is set, it may not be possible to make or receive calls depending on the amount of accumulated call time.
- If you cover the screen by your face etc. while dialing/calling, the display turns off for preventing false operation.
- Note that even if you cover the microphone, the sound can be conveyed to the other party.

Registering a contact to Contacts and making a call

Registering a contact to Contacts

1 Home screen → [基本機能 (basic functions)] → [Contacts]

The contacts list is displayed.

2 [👤]

3 Enter required items → [SAVE] → [OK] → [PASS PHONE TO PARENT]/[DON'T USE]

- If "PASS PHONE TO PARENT" is selected, the child gets the parent/guardian to check the newly registered contact. For details, refer to "Checking registered contacts" (▶ P.83).
- If "DON'T USE" is selected, the contact is registered, and appears in "Parental pending".

Checking registered contacts

Contacts not yet checked by a parent or guardian appear in "Parental pending" in the contacts list screen. A parent or guardian checks and then restricts or permits them.

1 Contacts list → [⋮] → [Restrict call/mail]

Alternatively, in the contacts list screen, tap a contact waiting to be checked by a parent or guardian → [GET ALLOW PHONE AND MAIL TO PARENT] to check a contact.

2 Enter the parental password → [OK]

3 Tap contact waiting to be checked by a parent or guardian → [DISALLOW]/[ALLOW]

Changing DISALLOW/ALLOW for contact

1 Contacts list → [⋮] → [Restrict call/mail]

2 Enter the parental password → [OK]

3 Tap "DISALLOW"/"ALLOW" for contact to restrict/permit

- Tap to toggle "OK"/"NG".



memo

- ⦿ You can cancel restrictions from "Restrict call/mail" in Parental settings (▶P.61).
- ⦿ DISALLOW/ALLOW cannot be changed for contacts in "Parental pending".

Adding parent/guardian contacts

1 Contacts list → [⋮] → [Set parental contacts list]

2 Enter the parental password → [OK]

3 [Add from contacts]

- You can tap contact → [Replace] to change an already-registered parent/guardian contact.

4 Tap the contact to add

Making a call from a contact

1 Contacts list → Tap the contact to call

2 [📞]

- You can tap "📧"/"✉️" to send SMS/e-mail.
- You can tap an icon with "Restricting" to cancel a restriction (▶P.83 "Changing DISALLOW/ALLOW for contact").

Receiving a call

■ Call arriving while backlight on (except Start screen)

1 Arriving call screen → [Answer]

Begin call.

- In Sleep mode or while the Start screen is displayed, slide "📞" to "📞" in the arriving call screen.

2 In call → []

Checking your own phone number (Profile)

1 Home screen → [Settings] → [Profile]

Profile screen appears.



memo

- ◎ To edit your profile, tap "✎".
- ◎ Alternatively, Home screen → [基本機能 (basic functions)] → [Contacts] → Tap your name to check your own phone number.

E-mail

- To use the e-mail application, you must first make e-mail address settings. When activating the e-mail application for the first time, follow the onscreen instructions to make initial settings.
- Use of e-mail requires subscription to LTE NET. If you did not apply when purchasing the product, inquire at an au shop or the Customer Service Center.

Initial settings

1 Home screen → []

After completing initial e-mail settings, a preassigned e-mail address is displayed.



- An e-mail address is not displayed if using "E-MAIL SETTINGS" with "Introduction" (▶P.52). In this case, proceed to step 3.

2 [閉じる (Close)]

3 If a description screen for the e-mail function is displayed, confirm content and tap "閉じる (Close)"

4 Confirm the setting screen for obtainment of information for improvement, and tap "設定する (set)"/"設定しない (do not set)" → [完了 (end)]

Changing the e-mail address



- 1 Home screen → [
- 2 [] → [Change Address/Settings Filter]
- 3 [Eメールアドレスの変更へ (Change e-mail address)]
- 4 Enter the PIN → [送信 (Send)]
- 5 Confirm content, [承諾する (Agree)]
- 6 Enter the e-mail address → [送信 (Send)]
- 7 [OK] → [閉じる (Close)]

Restoring backed up e-mail

You can load mail data backed up on a previously used product to this product.

Restoring mail data

You can restore backed up mail data (mail text body, attachments).

- 1 Home screen → [] → [] → [E-mail settings]
- 2 [Backup/Restore] → [Restore mails]
- 3 Select type of mail to restore → [OK]
- 4 Select backed up data to restore → [OK]
Tap "Select all" to select all listed data.
Tap "Up" to select the folder one level up.
Tap "MyFolder" to open MyFolder.
- 5 [Add]/[Overwrite] → [OK]
If "Overwrite" is selected, tap "OK" in the confirmation screen.

Restoring all backed up data

Restoring all data erases all mail data (mail text body, attachments), e-mail settings, and sorting conditions currently saved in the e-mail application before restoring data.

- 1 Home screen** → [] → [] → [E-mail settings]
- 2 [Backup/Restore]** → [Restore whole data]
- 3 Select the backed up data to restore** → [OK]

Using Eco Mode

Set sleep time and screen brightness to a minimum or turn off Wi-Fi® and Bluetooth® connections, etc. so that you can save battery power.

- 1 Home screen** → [Others Apps] → [Eco Mode]
The Eco Mode screen is displayed.
- 2 Tap "OFF" to turn "ON"**
Eco Mode is set.



◎ The Eco Mode screen displays available usage time, call time, etc. based on current product status and settings.

Wireless LAN (Wi-Fi®) function

Connect to an Internet service using a home wireless LAN (Wi-Fi®) environment or public wireless LAN environment when out and about.

Turning the Wi-Fi® function on

To use the Wi-Fi® function, turn on the Wi-Fi® function, and then search for an available Wi-Fi® network to connect to.

- 1 Home screen** → [Settings] → [Wi-Fi]
- 2 Turn "Wi-Fi" to "ON"**

The Wi-Fi® function switches on and scans for available Wi-Fi® networks.

Time may be required for the Wi-Fi® function to switch on.



memo

- ◎ Alternatively, Home screen → [Parental settings] → Enter the parental password → [OK] → [Other settings] → "Phone settings" → Tap "OFF" for "Wi-Fi" to set to "ON" and turn the Wi-Fi® function on.

Connecting to a Wi-Fi® network

1 Home screen → [Settings] → [Wi-Fi]

2 Turn "Wi-Fi" to "ON"

The Wi-Fi® function activates and a list of available Wi-Fi® networks is displayed.

3 Select a Wi-Fi® network to connect to

- To connect to a security-protected Wi-Fi® network, enter the password (security key)* and tap "CONNECT".
* The password (security key) is set on the access point. For details, contact the network administrator.
- Once connected, "📶" is displayed in the status bar.



memo

- ◎ If Wi-Fi® use is restricted by Parental settings, the product cannot connect to unpermitted Wi-Fi® networks. For details on canceling access point restrictions, refer to "Restricting use of Wi-Fi®" (▶P.62).

Using the tethering function

The tethering function allows access to the Internet using the product as a portable access point. You can connect up to 10 wireless LAN (Wi-Fi®) devices, connect the product to a PC with a microUSB cable 01 (sold separately), or connect up to 5 Bluetooth® devices and access the Internet.

1 Home screen → [Settings] → [Tethering]

2 [USB tethering]/[Wi-Fi tethering]/[Bluetooth tethering]

Follow the onscreen instructions.



memo

- ◎ Subscription is required for using the tethering function.
- ◎ Alternatively, Home screen → [Parental settings] → Enter the parental password → [OK] → [Other settings] → [Phone settings] → [More] → [Tethering] to make tethering function settings.
- ◎ If "Restrict Wi-Fi" (▶P.62) is "ON", the tethering function is unavailable.

Capturing photos and video

Capturing a photo

1 Home screen → [📷]

2 Tap the screen

The camera focuses where tapped.

- Long-touch the monitor screen to lock focus.

3 [📷]

A photo is captured. Captured data is automatically saved.

Capturing a video

1 Home screen → [📷]

2 Tap the screen

The camera focuses where tapped.

- Long-touch the monitor screen to lock focus.

3 [📹]

Recording starts.

- Tap "📷" during recording to capture a photo.

4 [📹]

Recording stops. Recorded data is automatically saved.

Using the Gallery

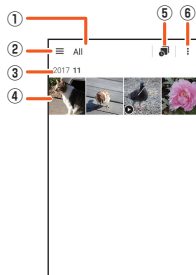
The Gallery allows you to list and play back images/videos in the internal storage/a microSD memory card.

Playing data

1 Home screen → [Gallery]

The data list is displayed.

- If no image data is stored in the product, none is displayed.
- Zoom in/out in the data list to enlarge/shrink the displayed thumbnail.



《Data list》

① Displayed category name

② Category switch icon

Switch the displayed category.

- Tap "📷 Camera" to activate the camera.

③ Save year/month

The year and month the data was saved is displayed.

④ Saved data

⑤ Switch to by-month display

Displays data sorted by month folders. Displayed when the display category is "All".

⑥ Menu

A menu is displayed in each displayed screen.
Select data, view a slideshow, etc.

2 Select the data

Data is played.

Appendix

Updating Software

You can update the product to the most recent software for optimal performance and to get the latest enhancements.

There are several methods to update software.

- Updating by downloading software with the product
- Updating by downloading software with the product via Wi-Fi®

■ Notes

- You are charged for data communication when connecting to the Internet from the product using data communication.
- When a software update is required, notification is sent by mail to the destination registered as a parent/guardian destination. Information is also provided on the au homepage and by other means. For details, contact an au shop or the Customer Service Center (157/free of charge). To get the most out of your product, au also sends notifications to customers with a product requiring a software update.
- You are recommended to back up your data before updating software.

- Fully charge before update. If the update is started with the battery power low or battery power becomes low during update, software update cannot be done.
- Check the radio wave condition. Software update may fail in poor reception area.
- Any operations are not available during software update. Calling 110 (Police), 119 (Fire/Ambulance), 118 (Maritime rescue) is not available. Alarm does not work, either.
- If software update has failed or stopped, perform the same procedure again.
- If you fail to update software, it may become impossible to operate the product. If this happens, bring it to an au shop or PiPit (not accepted by some shops).

Downloading and updating software

Update files can be downloaded from the Internet web site into the product directly.

- 1 **Home screen** → **[Parental settings]** → **Enter parental password** → **[OK]**
- 2 **[Other settings]** → **[Phone settings]** → **[About phone]** → **[Software update]**
- 3 **[CHECK FOR UPDATE]**

From here on, follow the onscreen instructions.



memo

- ① Note that depending on the details of your subscription, communication charges may be incurred during auto-searching for available networks.
- ② Software cannot be returned to a previous version after a software update.
- ③ For an automatic update, you must enter the parental password when automatically updating.

How do I...? Q&A

When unsure what to do, or before you assume that the product is malfunctioning, check the following:

How do I...

How do I...	What you should set/check	Page
Change settings as a parent	Change settings with the parental settings.	P.57
Restrict applications that can be used	Set use restrictions with "Restrict apps".	P.60
Prevent inappropriate webpages from being displayed	Set the filtering level with "Web filtering". You can also restrict access to webpages based on the child's age.	P.68
Allow use of specific webpages	You can permit/restrict access to individual URLs with "Restrict to access website".	P.61
Restrict calling and mailing to only certain contacts	Use "Restrict call/mail" to allow calling/e-mailing/SMS texting only with Contacts entries that have been allowed.	P.61
Limit the child's overuse of the smartphone	Use "Available time per day"/"Call time per day" to limit usage time and call time.	P.60

How do I . . .	What you should set/check	Page
Prevent too much time gaming	Use "Available time per day"/ "Call time per day" to limit usage time and call time.	P.60
Prevent the child from using the smartphone at night	Use "Restriction period for use" to set usable times of day.	P.60
Only allow connection to specific Wi-Fi® networks	Use "Restrict Wi-Fi" to restrict available Wi-Fi® access points.	P.62
Not allow inappropriate language to be entered	Use "Safety character input settings" to cause a confirmation to be displayed when inappropriate language is entered.	P.62
Confirm the child's current location	Use 安心ナビ (Security Navi).*	—
Set restrictions when the smartphone is lost, etc.	Use Lookout for au.*	—

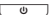
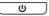

How do I . . .	What you should set/check	Page
Cancel use restrictions temporarily in the event of a disaster, etc.	From a device (phone number) registered as a parent or guardian contact, send an SMS to the product with "制限解除 (Cancel restriction)" entered in the text body.	P.71


* 安心ナビ(探す) (Security Navi (search for device)) and Lookout for au require a fee.

Troubleshooting

- If the product seems to be malfunctioning, check the following and also complete the "トラブル診断 (Troubleshooting)" with the "故障受付 (Repair Receipt App)" application.

Home screen → **[au Supports]** → **[故障受付 (Repair Receipt App)]** → **[トラブル診断 (Troubleshooting)]**

Symptoms	What you should check	Page
Cannot turn on power	Is the internal battery charged?	P.48
	Is  pressed and held until the incoming light comes on?	P.50
Cannot charge the battery pack	Is the charger connected correctly?	P.48
	Is the temperature of the product or battery pack high or low? Charging may stop due to the temperature of the product or battery pack.	—
	Are the specified accessories (adapter, etc.) used to charge?	P.49
Cannot operate/the screen is frozen/cannot turn the power off	You can press and hold  and  (Volume UP button) at the same time for at least 11 seconds to force shutdown and restart the product.	P.51
The power goes off	Is the internal battery fully charged?	P.48

Symptoms	What you should check	Page
The power is going off while the activation logo is displaying	Is the internal battery fully charged?	P.48
Cannot make calls	Is the power turned on?	P.50
	Is the correct au IC Card inserted?	P.43
	Was the number entered correctly? (Was the area code entered?)	P.82
	After entering the number, was  tapped?	P.82
	Is "Airplane mode" set?	P.80
	Are contacts restricted for calling or mailing?	P.61
	Is call time restricted?	P.60
Cannot receive calls	Is signal strong enough?	P.79
	Is the product out of the service area?	P.79
	Is the power turned on?	P.50
	Is the correct au IC Card inserted?	P.43
	Is "Airplane mode" set?	P.80
	Are contacts restricted for calling or mailing?	P.61
	Is call time restricted?	P.60

Symptoms	What you should check	Page
"⌵" (out of service area) appears	Is the product out of the service area or in an area where the signal is weak?	P.79
	Is the built-in antenna covered with finger etc.?	P.40
	Is the correct au IC Card inserted?	P.43
Cannot send/receive e-mail/SMS	Is "Airplane mode" set?	P.80
	Are contacts restricted for calling or mailing?	P.61
Cannot connect by Wi-Fi®	Is there an adequate Wi-Fi® signal?	P.79
	Has Wi-Fi® been set?	P.86
	Is the product or battery warm? Functionality is sometimes stopped by the temperature.	—
	Is "Airplane mode" set?	P.80
	Wi-Fi® becomes set off even when Eco Mode is set.	P.86
	Are Wi-Fi® access points restricted?	P.62
The display/incoming light lights/blinks but there is no ringtone	Is Silent mode set?	P.81

Symptoms	What you should check	Page
Cannot operate button/touch panel	Is the power turned on?	P.50
	Turn the power completely off and turn it on again.	P.50
	Is usage time restricted?	P.60
Touch panel does not operate as intended	Check how to correctly operate the touch panel.	P.72
	Turn the power completely off and turn it on again.	P.50
"⌵" appears	Is the correct au IC Card inserted?	P.43
A message such as charge the battery appears	The battery is almost dead.	P.48
Battery usage time is short	Is the product fully charged? • Charge the product until the red charging light goes off.	P.48
	Is the internal battery end-of-life?	P.24
	Is the product left in the place for a long period where "⌵" (out of service area) appears?	P.79
After dialing, receiver beeps and call does not connect	Are you outside the service area or where signal is weak?	P.79
	The line is extremely busy or the other party is in a call; dial again.	—

Symptoms	What you should check	Page
Display brightness is dim	Is the product or battery temperature high? The display may dim depending on the temperature.	—
	In Eco Mode, display brightness is set to the lowest value.	P.86
Cannot hear/ Hard to hear the other party	Is call volume set to the minimum?	P.82
	Place your ear hole to the receiver.	P.39
Cannot use microphone on earphone microphone	Is the connector inserted correctly? Insert firmly all the way into the earphone microphone terminal.	P.102
Applications don't activate	Is use of applications restricted?	P.60
	Is the usable time of day or usable time restricted?	P.60
Individual contacts settings do not work	Is a caller's phone number notified (visible) when they call? If not notified, incoming settings for contacts are not enabled. Group incoming settings for contacts are also not enabled.	—
	Is a same phone number registered 2 or more times in contacts?	P.82

Symptoms	What you should check	Page
microSD memory card isn't recognized	Is the microSD memory card installed properly?	P.46
Camera does not operate	Is the battery low?	P.48
	Is the product or battery warm? Functionality is sometimes stopped by the temperature.	—
	Is the usable time of day or usable time restricted?	P.60
Cannot make emergency calls	Is the correct au IC Card inserted?	P.43
	Are you using a card other than a specified au IC Card?	—
	Is the product out of the service area or in an area where the signal is weak?	P.79
Cannot obtain location when personal alarm activated	Is "Send Location information" for "Personal alarm settings" on?	P.63
	Are the terms of use for the personal alarm agreed to? In the parental settings, Security settings → Personal alarm settings → Confirm the terms of use and tap [Agree].	P.64

Symptoms	What you should check	Page
Cameras are not activated when the personal alarm is activated	Is the battery low?	P.48
	Is the product or battery warm? Functionality is sometimes stopped by the temperature.	—
Cannot send images when personal alarm activated	Is "Send still pictures" for "Personal alarm settings" on?	P.63
	Are the terms of use for the personal alarm agreed to? In the parental settings, Security settings → Personal alarm settings → Confirm the terms of use and tap [Agree].	P.64
	Are initial settings completed for the e-mail application? E-mail cannot be sent/received if initial settings are not completed.	P.84
Cannot change settings	Have you displayed Phone settings from Other settings in Parental settings?	P.69
Parental password is forgotten	If the parental password is entered incorrectly 5 times, a temporary password is sent to the e-mail address registered for the first parent/guardian contact.	—

If you cannot find the solution to your problem in the above items, confirm symptoms with the "トラブル診断 (Troubleshooting)" in auお客さまサポート (au customer support) on the au homepage below (Japanese).

<http://cs.kddi.com/support/komatta/kosho/trouble/>

After-sales service

When asking for repair

For repair, contact Repair and Delivery Service Center.

During the warranty period*	Repairs will be done based on our terms for free-of-charge repairs.
Outside the warranty period	We shall repair the product for a charge as requested by the customer if repair renders it usable.

* The warranty period is for 1 year from the day the customer makes a new purchase of the product.



- ◎ Before handing in the product for repair, make a backup of the contents of memory since they may disappear during repair. Note that the Company shall not be liable for any damages and loss of income should the contents of memory be altered or lost.
- ◎ Recycled parts that meet the Company's quality standards are sometimes used for repair.
- ◎ Collected au cell phones by Replacement cell phone delivery service which you used before are recycled to cell phones for replacement after repairs. Also replaced parts by au after-sales service are collected and recycled by KDDI. They are not returned to customers.

- ◎ Instances where the product has been changed, modified, or analyzed (including software modification or analysis (including rooting, etc.) reverse-engineered, reverse-compiled, or reverse-assembled) or has been repaired at a location other than an authorized repair location designated by the company may not be covered by warranty or may prevent the product from being accepted for repairs.
- ◎ The battery built into the main unit is exempt from free-of-charge repair except for issues occurring due to material or construction defects.
- ◎ Bundled items other than the main unit are exempt from free-of-charge repair.

Performance parts for repair

The Company retains performance parts for repair of the product main unit and its peripherals for four years after discontinuation of production. "Performance parts for repair" refers to parts required for maintaining the functions of the product.

■ Terms for free-of-charge repairs

1. When registering for repairs, have the product's serial number (IMEI number) ready. The serial number (IMEI number) can be confirmed on the product main unit or a sticker placed on the product packaging.
2. Repairs will be done free of charge, if the device malfunctions under normal usage as per precautions described in the instruction manual, etc. within the warranty period.
3. In the following instances, repairs will be at cost even if within the warranty period (or repair may not be possible).
 - ① Usage was not correct as per the instruction manual.
 - ② Malfunction or damage from inappropriate repair or modification.
 - ③ Repairs done at a location not designated by the Company, etc. as a qualified repair location.
 - ④ Malfunction or damage due to negligent use or accident. If traces of droppage, water exposure, humidity, etc. are determinable.
 - ⑤ Malfunction or damage from natural disaster (earthquake, wind and flood damage, etc.), fire, salt damage, abnormal voltage, etc.
4. Device might not be accepted for repairs depending on the condition of damage.
5. The Company shall not be liable for damages or loss resulting from malfunctioning of the product device.

6. The Company shall not be liable in the event of accident resulting from connecting the product to a non-specified device.
7. We are unable to respond to requests for onsite repairs involving travel.
8. This warranty is valid only in Japan.

* This warranty honors requests for free-of-charge repair based on the time period and conditions defined above. Accordingly, it does not restrict the legal rights of the customer with regard to the issuer of the warranty and other business operators.

■ Repair and Delivery Service

An after-sales service membership program on a monthly basis called "Repair and Delivery Service" (monthly fee: 380 yen, tax excluded) is available for using your au cell phone for a long time without worries. This service expands coverage for many troubles including malfunction, theft and loss. For details of this service, refer to au homepage or contact Repair and Delivery Service Center.



memo

- ◎ You can apply for membership only at the time of purchasing your au cell phone.
- ◎ Once you cancel the membership, you cannot reapply for it until you purchase an au cell phone next time.
- ◎ Note that when changing the model or purchasing an extra cell phone, this service only covers the most recently purchased au cell phone.
- ◎ When an au cell phone is handed over to you or someone else, the "Repair and Delivery Service" membership is also handed over to the successor of the cell phone.

◎ When you purchase a new au cell phone upon changing the model or purchasing an extra cell phone, your "Repair and Delivery Service" membership for the old au cell phone is automatically canceled.

◎ Service contents are subject to change without notice.

■ au IC Card

The au IC Card is lent to you by au. In case of loss or damage, the card will be replaced at your expense. When a malfunction is suspected, or in case of theft or loss, contact an au shop or PiPit.

■ au after-sales service information

Service			Repair and Delivery Service	
			Members	Others
Replacement cell phone delivery service	Spontaneous failure	1st year	Free of charge	No recompense
		2nd year or later	Refer to the following charges list of "Replacement Cell Phone Delivery Service" (membership)	
	Partially damage, water soak, irreparable damage, theft or loss			

Service			Repair and Delivery Service	
			Members	Others
Holding over and repair	Spontaneous failure	1st year	Free of charge	Free of charge
		2nd year or later	Free of charge (three-year warranty)	Actual cost
	Partially damage		Customer charge Upper limit: 5,000 yen	
	Water soak, irreparable damage		Customer charge 10,000 yen	
	Theft, loss		No recompense	No recompense (model change)

* Charge amounts are all tax excluded.

■Charges list of "Replacement Cell Phone Delivery Service" (membership)

Applied condition	First use	Second use
General	5,000 yen/ Benefit for longtime au user*1 3,000 yen	8,000 yen/ Benefit for longtime au user*1 6,000 yen
Both "Discount for Web Application"*2/"Discount for Nonuse of Substitute"*3 are applied	4,000 yen/ Benefit for longtime au user*1 2,000 yen	7,000 yen/ Benefit for longtime au user*1 5,000 yen
Only "Discount for Nonuse of Substitute"*3 is applied	4,500 yen/ Benefit for longtime au user*1 2,500 yen	7,500 yen/ Benefit for longtime au user*1 5,500 yen

* Charge amounts are all tax excluded.

*1 This discount applies to customers who have used au for 3 years (25 months) or more, and all the lines within that customer's Family Discount. For customers using a data communication device or tablet, this discount applies to customers who are subscribed to a set discount (WIN Single Set Discount or Smartphone Set Discount) and have been under the contract of the line eligible for the set discount for 3 years or more.

*2 Discount for Web Application: If you apply for the "Replacement Cell Phone Delivery Service" through the au homepage, you get a discount of 500 yen on the fee.

"Discount for Nonuse of Substitute" can be applied automatically at the same time since a substitute cell phone is not borrowed if you apply for "Discount for Web Application".

*3 Discount for Nonuse of Substitute: When using the "Replacement Cell Phone Delivery Service" and you do not borrow a substitute cell phone, you get a discount of 500 yen on the fee.
For details, check on the au homepage.

■Online request for replacement (24 hours)

* Only accepted from PC or smartphone

https://cs.kddi.com/support/n_login.html



memo

Replacement cell phone delivery service

◎ When you have trouble with your au cell phone, replacement cell phone (same model, same color*) is delivered by calling to. Return your damaged cell phone within 14 days after the replacement cell phone is delivered.

* If a same-model, same-color replacement cannot be provided, a replacement in the model/color as specified separately by the Company will be provided instead.

◎ Available up to twice in a year from the day you use this service as a start day. If you do not use this service in the past year for the subscription to this service, it will be 1st and if you use, it will be the 2nd.

* For details, refer to au homepage.

Holding over and repair

◎ Damages and malfunctions intentionally caused by the customer as well as those due to modification (e.g. disassembly, change of parts, painting, etc.) by the customer are not covered by this service.

◎ You cannot receive a refund for replacement of the outer casing due to stains, scratches, paint removal, etc. on the outer casing.

SIM-Unlocking Your au Phone

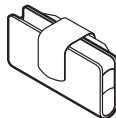
This product can be SIM-unlocked. SIM-unlocking the product allows other-carrier SIM cards to be used with it.

- Requests can be made for SIM-unlocking on the au homepage or at an au shop.
- Some services, functions, etc. may have restrictions when an other-carrier SIM card is used. The Company does not guarantee operation whatsoever.
- To complete settings after SIM-unlocking your au phone: Home screen → [Settings] → [About phone] → [SIM card status] → [SIM STATUS UPDATE]
- For details, refer to the au homepage.

<http://www.au.kddi.com/support/mobile/procedure/simcard/> (Japanese)

Peripheral devices

- Common AC Adapter 05 (0501PWA) (sold separately)
- Common AC Adapter 03 (0301PQA) (sold separately)
- Common AC Adapter 03 Navy (0301PBA) (sold separately)
- Common AC Adapter 03 Green (0301PGA) (sold separately)
- Common AC Adapter 03 Pink (0301PPA) (sold separately)
- Common AC Adapter 03 Blue (0301PLA) (sold separately)
- AC Adapter JUPITRIS (White) (L02P001W) (sold separately)
- AC Adapter JUPITRIS (Red) (L02P001R) (sold separately)
- AC Adapter JUPITRIS (Blue) (L02P001L) (sold separately)
- AC Adapter JUPITRIS (Pink) (L02P001P) (sold separately)
- AC Adapter JUPITRIS (Champagne) (L02P001N) (sold separately)
- au Carrying Case G Black (0106FCA) (sold separately)



- au Carrying Case H Black (0107FCA) (sold separately)
- Portable charger 02 (0301PFA) (sold separately)
- microUSB cable 01 (0301HVA) (sold separately)
- microUSB cable 01 Navy (0301HBA) (sold separately)
- microUSB cable 01 Green (0301HGA) (sold separately)
- microUSB cable 01 Pink (0301HPA) (sold separately)
- microUSB cable 01 Blue (0301HLA) (sold separately)



memo

- ◎ You might not be able to charge the product adequately with the portable charger 02 (sold separately).
- ◎ Peripheral devices can be purchased from au Online Shop.
<http://auonlineshop.kddi.com>

Using an earphone

Connect and use an earphone (commercially available), earphone microphone (commercially available), or stereo earphone microphone (commercially available).

1 Connect earphone (commercially available) to earphone microphone terminal



memo

- ◎ Not all earphone microphones (commercially available) are compatible.

Main specifications

Display	Approx. 4.7 inches, Approx. 16,770,000 colors, Transparent TFT	
	720 × 1,280 dots (HD)	
Weight	Approx. 136 g	
Dimensions (W x H x D)	Approx. 67mm × 135mm × 9.9mm (thickest part approx. 10.6mm)	
Internal memory ^{*1}		ROM: Approx. 16GB RAM: Approx. 2GB
Continuous call time	Approx. 1,260 minutes	
Continuous stand-by time	Approx. 740 hours	
Continuous tethering time	Approx. 790 minutes	
Maximum number of Wi-Fi tethering connection devices	10	
Charging times (estimate)	Common AC Adapter 05 (sold separately)	Approx. 140 minutes
Camera imaging element	CMOS	

Number of effective pixels: Out-camera		Approx. 13,000,000 pixels
Number of effective pixels: In-camera		Approx. 2,000,000 pixels
Wireless LAN (Wi-Fi®) function		IEEE802.11b/g/n compatible
Bluetooth® function	Compatible version	Bluetooth® standard Ver.4.2 compatible*2
	Output	Bluetooth® standard Class 1
	Communication range*3	Within 10 m with no obstacles in the range

Bluetooth® function	Supported Bluetooth profile*4	GATT (Generic Attribute Profile) SPP (Serial Port Profile) A2DP (Advanced Audio Distribution Profile) AVRCP (Audio/Video Remote Control Profile) HSP (Headset Profile) HFP (Hands-Free Profile) OPP (Object Push Profile) PBAP (Phone Book Access Profile) HID (Human Interface Device Profile) PAN (Personal Area Networking Profile) PAN NAP (Personal Area Networking-Network Access Point) PAN USER (Personal Area Networking-User) HOGP (HID over GATT Profile) MAP (Message Access Profile)
	Frequency bands	2.4 GHz band

- *1 Since the storage is shared by data and applications, storage space may be reduced depending on the usage of applications.
- *2 It is confirmed that the product and all Bluetooth® devices are compliant with Bluetooth® standards designated by Bluetooth SIG, and they are authenticated. However, procedures may differ or data transfer may not be possible depending on the device's characteristics or specifications.
- *3 Changes according to objects obstructing devices and signal reception.
- *4 Specifications provided in Bluetooth® standards for making communication between Bluetooth®-compatible devices in accordance with their intended use.



- ◎ The continuous talk time and continuous standby time may drop to less than half depending on the battery charging status, usage environment such as temperature, reception condition at the location where the product is used, and the function settings.

Specific Absorption Rate of Cell Phone

This model mirai f cell phone complies with Japanese technical regulations and international guidelines regarding exposure to radio waves. This cell phone has been designed in observance of the Japanese technical regulations regarding exposure to radio waves ^(*) and limits to exposure to radio waves recommended by equivalent international guidelines.

These international guidelines were set out by the International Commission on Non-Ionizing Radiation Protection (ICNIRP), which is in collaboration with the World Health Organization (WHO), and the permissible limits include a substantial safety margin designed to assure the safety of all persons, regardless of age and health condition. The Japanese technical regulations and international guidelines define the limits using a unit of measurement known as the Specific Absorption Rate (SAR), which represents the average amount of radio frequency energy absorbed by the human. The SAR limit for cell phones is 2.0 W/kg. The highest SAR value for this cell phone when tested for use near the head is 0.839 W/kg ^(*). The highest SAR value for this cell phone when tested for use on the body is 0.590 W/kg ^(*). The actual SAR of this cell phone while talking on the phone can be well below that indicated above. Since cell phones are designed to only output the minimum power required to communicate with a base station, the normal SAR is a smaller value

under actual call conditions. Therefore in general, the closer you are to a base station, the lower the power output of the cell phone.

This cell phone can be used in positions other than near your head.

Use an accessory such as a carrying case, etc. so that you can hold the product at least 1.5 cm away from your body and also do not contain metal parts between the product and your body. By doing this, this cell phone complies with Japanese technical regulations and international guidelines regarding exposure to radio waves. The World Health Organization has stated that present scientific information does not indicate the use of mobile devices has any harmful effects on the human body. They recommend that if you are still worried about your exposure then you can limit your talk time or use a handsfree kit to keep the cell phone away from your head and body. If you would like to know more detailed information, please refer to the WHO website. http://www.who.int/docstore/peh-emf/publications/facts_press/fact_english.htm

*1 Technical regulations are defined by the Ministerial Ordinance Related to Radio Law (Article 14-2 of Radio Equipment Regulations).

*2 This value includes wireless functions that can be used at the same time. Please refer to the websites listed below if you would like to know more detailed information regarding SAR.

-
- Ministry of Internal Affairs and Communications website
<http://www.tele.soumu.go.jp/e/sys/ele/index.htm>
 - Association of Radio Industries and Businesses website
<http://www.arib-emf.org/index02.html> (in Japanese only)
 - au homepage
<http://www.au.kddi.com/english>
-

Export Administration Regulations

This product and its accessories may be subject to the Japan Export Administration Regulations ("Foreign Exchange and Foreign Trade Law" and its related laws). In addition, U.S. Re-export Regulations (Export Administration Regulations and the related laws and regulations), regulations in other countries may apply to this product and its accessories. To export and re-export this product and its accessories, directly or indirectly, take the required measures on your responsibility and at your expenses. For details on the procedures, contact the Ministry of Economy, Trade and Industry, the U.S. Department of Commerce, or authority concerned.

Intellectual property rights

Trademarks

Company names and product names referred to in this manual are trademarks or registered trademarks of respective companies.



Google, Google logo, Android, Android logo, Google Play and Google Play logo are trademarks or registered trademarks of Google, Inc.

Gmail and Gmail logo, Google Maps and Google Maps logo, Hangouts and Hangouts logo, Google Maps Navigation and Google Maps Navigation logo, Google Chrome, Google Chrome logo, Google Voice Search and Google Voice Search logo, and YouTube and YouTube logo are trademarks or registered trademarks of Google, Inc.

Microsoft®, Windows® and Windows Vista®/Windows®7/Windows®8/Windows®8.1/Windows®10 are registered trademarks of Microsoft Corporation in the U.S.A. and other countries.

The official name for Microsoft® Windows® is Microsoft® Windows® Operating System.

Microsoft®, Microsoft® Excel®, Microsoft® PowerPoint®, Windows Media®, and Exchange® are trademarks or registered trademarks of Microsoft Corporation in the United States and other countries.

Microsoft® Word and Microsoft® Office are product name of Microsoft Corporation in the United States.

QR code is a trademark of DENSO WAVE INCORPORATED.

microSD and microSDHC logos are trademarks of SD-3C, LLC.

Bluetooth® and logo are registered trademarks owned by the Bluetooth SIG, Inc., and KYOCERA Corporation is licensed to use those trademarks.

WiMAX is a trademark of WiMAX Forum.

Wi-Fi®, WPA®, Wi-Fi CERTIFIED logo, Wi-Fi Protected Setup logo, and Wi-Fi Direct® are registered trademarks of Wi-Fi Alliance.

Wi-Fi CERTIFIED™ and Wi-Fi Protected Setup are trademarks of Wi-Fi Alliance.

iWnn of OMRON SOFTWARE Co., Ltd. is used for conversion methods for Japanese language, and for phrase prediction methods for English.

iWnn IME©OMRON SOFTWARE Co., Ltd. 2009-2016 All Rights Reserved.

TRENDMICRO and VirusBuster are registered trademarks of Trend Micro Incorporated.

THIS PRODUCT IS LICENSED UNDER THE MPEG-4 VISUAL PATENT PORTFOLIO LICENSE FOR THE PERSONAL AND NONCOMMERCIAL USE OF A CONSUMER FOR (i) ENCODING VIDEO IN COMPLIANCE WITH THE MPEG-4 VISUAL STANDARD ("MPEG4 VIDEO") AND/OR (ii) DECODING MPEG-4 VIDEO THAT WAS ENCODED BY A CONSUMER ENGAGED IN A PERSONAL AND NONCOMMERCIAL ACTIVITY AND/OR WAS OBTAINED FROM A VIDEO PROVIDER LICENSED BY MPEG LA TO PROVIDE MPEG-4 VIDEO. NO LICENSE IS GRANTED OR SHALL BE IMPLIED FOR ANY OTHER USE. ADDITIONAL INFORMATION INCLUDING THAT RELATING TO PROMOTIONAL, INTERNAL AND COMMERCIAL USES AND LICENSING MAY BE OBTAINED FROM MPEG LA, LLC.
SEE [HTTP://WWW.MPEGLA.COM](http://WWW.MPEGLA.COM).

- (1) ACCESS, the ACCESS logo, and NetFront are registered trademarks or trademarks of ACCESS CO., LTD. in the United States, Japan and/or other countries.
- (2) This software is based in part on the work of the Independent JPEG Group.

The product includes pictograms licensed by NTT DOCOMO, INC.

"もじチェン", the function for switching between screen fonts, is a product of LIM Corporation Ltd. "もじチェン" is a registered trademark of LIM Corporation Ltd. The product is installed with fonts by LIM Corporation Ltd. The product is installed with fonts by Morisawa Inc.

"PhotoSolid®", the function to avoid blurring still images, is a product of Morpho, Inc. "PhotoSolid®" is a registered trade mark of Morpho, Inc.

"MovieSolid®", the function to avoid blurring videos, is a product of Morpho, Inc. "MovieSolid®" is a registered trade mark of Morpho, Inc.

"Morpho Effect Library", the image effect technology, is a product of Morpho, Inc.

"Morpho Effect Library" is a trade mark of Morpho, Inc.

"PhotoScouter", the scene detection technology, is a product of Morpho, Inc.

"PhotoScouter" is a registered trademark of Morpho, Inc.

"Morpho Rapid Effect", the image effect technology, is a product of Morpho, Inc.

"Morpho Rapid Effect" is a trademark of Morpho, Inc.

"Morpho HDR" is adopted for HDR (High Dynamic Range) technology. "Morpho HDR" is a trade mark of Morpho, Inc.

All other company names and product names are trademarks or registered trademarks of respective companies referred to in this manual.

License

【OpenSSL License】

Copyright © 1998-2011 The OpenSSL Project. All rights reserved.

This product includes software developed by the OpenSSL Project for use in the OpenSSL Toolkit. (<http://www.openssl.org>)

THIS SOFTWARE IS PROVIDED BY THE OpenSSL PROJECT "AS IS" AND ANY EXPRESSED OR IMPLIED WARRANTIES, INCLUDING, BUT NOT LIMITED TO, THE IMPLIED WARRANTIES OF MERCHANTABILITY AND FITNESS FOR A PARTICULAR PURPOSE ARE DISCLAIMED. IN NO EVENT SHALL THE OpenSSL PROJECT OR ITS CONTRIBUTORS BE LIABLE FOR ANY DIRECT, INDIRECT, INCIDENTAL, SPECIAL, EXEMPLARY, OR CONSEQUENTIAL DAMAGES (INCLUDING, BUT NOT LIMITED TO, PROCUREMENT OF SUBSTITUTE GOODS OR SERVICES; LOSS OF USE, DATA, OR PROFITS; OR BUSINESS INTERRUPTION) HOWEVER CAUSED AND ON ANY THEORY OF LIABILITY, WHETHER IN CONTRACT, STRICT LIABILITY, OR TORT (INCLUDING NEGLIGENCE OR OTHERWISE) ARISING IN ANY WAY OUT OF THE USE OF THIS SOFTWARE, EVEN IF ADVISED OF THE POSSIBILITY OF SUCH DAMAGE.

[Original SSLeay License]

Copyright © 1995-1998 Eric Young (eay@cryptsoft.com) All rights reserved.

This product includes cryptographic software written by Eric Young (eay@cryptsoft.com)

THIS SOFTWARE IS PROVIDED BY ERIC YOUNG "AS IS" AND ANY EXPRESS OR IMPLIED WARRANTIES, INCLUDING, BUT NOT LIMITED TO, THE IMPLIED WARRANTIES OF MERCHANTABILITY AND FITNESS FOR A PARTICULAR PURPOSE ARE DISCLAIMED. IN NO EVENT SHALL THE AUTHOR OR CONTRIBUTORS BE LIABLE FOR ANY DIRECT, INDIRECT, INCIDENTAL, SPECIAL, EXEMPLARY, OR CONSEQUENTIAL DAMAGES (INCLUDING, BUT NOT LIMITED TO, PROCUREMENT OF SUBSTITUTE GOODS OR SERVICES; LOSS OF USE, DATA, OR PROFITS; OR BUSINESS INTERRUPTION) HOWEVER CAUSED AND ON ANY THEORY OF LIABILITY, WHETHER IN CONTRACT, STRICT LIABILITY, OR TORT (INCLUDING NEGLIGENCE OR OTHERWISE) ARISING IN ANY WAY OUT OF THE USE OF THIS SOFTWARE, EVEN IF ADVISED OF THE POSSIBILITY OF SUCH DAMAGE.

■ Regarding Windows notations

The names of operating systems (Japanese versions) used in this manual are as follows.

- Windows 10 is the abbreviation for Microsoft® Windows® 10 (Home, Pro, Enterprise, Education).
- Windows 8 is the abbreviation for Microsoft® Windows® 8, Microsoft® Windows® 8 Pro, Microsoft® Windows® 8 Enterprise.
- Windows 7 is the abbreviation for Microsoft® Windows® 7 (Starter, Home Basic, Home Premium, Professional, Enterprise, Ultimate).

- Windows Vista is the abbreviation for Microsoft® Windows Vista® (Home Basic, Home Premium, Business, Enterprise, Ultimate).

Users of the product are authorized to use software installed into the cell phone described in this instruction manual. Pay attention to the following points when using the software.

- (a) The software installed on this product or part of it may not be altered, delivered, modified, analyzed, reverse-engineered, derived, and any such actions are prohibited.
- (b) Illegally importing the software or a part of it is prohibited.
- (c) This Software is provided without implied warranties of merchantability, fitness for a particular purpose and noninfringement of third party rights.

Note that the existing license agreement takes priority for usage of GNU General Public License (GPL), GNU Library/Lesser General Public License (LGPL) included in software, software based on other open source software license and software that KYOCERA Corporation is licensed.

For information on the Open source software, refer to "About Open Source Software" as follows;

■ About Open Source Software

This product includes software originating from third parties that is subject to the GNU General Public License (GPL), GNU Library/Lesser General Public License (LGPL) and different and additional copyright licenses, disclaimers and notices. The exact terms of GPL, LGPL and some other licenses, disclaimers and notices are reproduced in "About phone" in this product. For details, refer to the Kyocera website.

This product includes software copyrighted by KYOCERA Corporation and licensed software.

Copyright of the software designed and developed complying with the open source software standard belongs to KYOCERA Corporation or the third parties. Distribution, reproduction, transformation and transmission over public lines without consent of KYOCERA Corporation are prohibited, unless you are authorized or permitted by Copyright Law.

■ Recording of diagnostics and usage data

KYOCERA Corporation requests the cooperation of customers with the improvement of product and service quality. Fault diagnostics and usage data (customer's use of applications, error logs, detailed information on customer's application use (specific functions, frequency of use, memory/battery use)) are recorded and stored in the customer's device, with the purpose of allowing KYOCERA Corporation to track and handle diagnostic events including unexpected shutdowns and system errors in order to improve quality and service. This information may be collected with the customer's permission when device repairs are requested.

For inquiries, call: Customer Service Center

For general, charge, operations (toll free)
Business hours 9:00~20:00 (7 days a week)

From fixed-line phones:

 0077-7-111

From au cell phones:

157 area code not required

PRESSING ZERO WILL CONNECT YOU TO AN OPERATOR
AFTER CALLING 157 ON YOUR au CELL PHONE

For service canceling procedure in case of loss or theft
(toll free)

Business hours 24-hour (7 days a week)

From fixed-line phones:

 0077-7-113

From au cell phones:

113 area code not required

In case above numbers are not available,

 0120-977-033 (except Okinawa)


 0120-977-699 (Okinawa)

Repair and Delivery Service Center

For loss, theft or damage (toll free)

Business hours 9:00 - 20:00 (7 days a week)

From fixed-line phones/au cell phones,

 0120-925-919



やめましょう、
歩きスマホ。



濡れた状態での充電は、
異常な発熱・焼損などの原因となり
大変危険です。



モバイル・リサイクル・ネットワーク
携帯電話・PHSのリサイクルにご協力を。

Cell phone and PHS operators collect and recycle unused
telephones, batteries and battery chargers at stores
bearing the  logo regardless of brand and manufacturer
to protect the environment and reuse valuable resources.

February 2017, 1st Edition

Sales: KDDI CORPORATION・OKINAWA CELLULAR TELEPHONE COMPANY
Manufactured by: KYOCERA Corporation