

Setting Guide

Thank you for purchasing the "LG it" (simply called the "product" from here on).
In this manual, settings for using the product are described.
This manual is described with the content of Android 8.1.
For the latest information, please refer to the "設定ガイド(Setting Guide)" (Japanese) available on the au homepage.
(<https://www.au.com/support/service/mobile/guide/manual/> (in Japanese only))

All company names and product names in this manual are either trademarks or registered trademarks. The trademark symbol (TM) and the registered trademark symbol (®) may be omitted in places in this manual.

Sold by : KDDI CORPORATION, OKINAWA CELLULAR TELEPHONE COMPANY

Imported by : LG Electronics Japan, Inc.

Manufactured by : LG Electronics Inc.

November 2018, 1st Edition

MBM66836102 (1.0)

For first-time users of smartphones

An application that explained how to use easily, is prepared.



au Easy Guide (in Japanese only)

To start the application, on the Home screen, tap the icon on the left.

au Easy Guide Book (in Japanese only)

The easy-to-follow instruction (au Easy Guide Book) using photos is prepared on the homepage.

<https://www.au.com/online-manual/guide/lgv36/> (in Japanese only)

You can easily access by holding the QR code on the right with the camera.



Online manual (in Japanese only)

You can use the "Online manual" which describes explanation of various functions by the following operation.

On the Home screen, [Others Apps] → [取扱説明書 (Online Manual)]

au Easy Guide (in Japanese only)

For first time users of smartphones

An application that explained how to use easily, is prepared.



On the Home screen, tap widget or icon of "auかんたんガイド (au Easy Guide)"

[利用規約を確認する (Confirm the Terms of Service)] → confirm the terms of service → [<] at the bottom of the screen → [利用規約に同意してスタート (Agree the Terms of Service and start)]

[はじめる (Start)]



Practice operation in about 1 minute

After finishing the practice, confirm the instruction of the function you want to use from the menu appeared

Online manual (in Japanese only)

Using on this product



On the Home screen, [Others Apps]

[取扱説明書 (Online Manual)]

You can use the online manual.

* If the confirmation screen of how to use appears, follow the onscreen instructions.

Using on the PC, etc.

Refer to au homepage.

<https://www.au.com/online-manual/lgv36/> (in Japanese only)

Initial Settings: STEP1

This section describes the initial settings screen that appears when you turn on the power for the first time.

Starting initial settings



[日本語 (日本) (Japanese)] → [English]

[<]

- For changing the language, [日本語 (日本) (Japanese)] → select language → [<]. Once you select your desired language, the language for the initial settings screen also changes. From here on, follow the onscreen instructions.
- For setting up Accessibility, after switching to the English display, [Accessibility] → review the precautions, [SETTINGS] → set Accessibility → [<] at the bottom of the screen → [<]. The operations herein differ depending on the configured Accessibility settings.
- If the language was not switched via the initial settings, switch the language via the following procedures.
On the Home screen, [設定 (Settings)] → [システム (System)] → [言語と入力 (Language & input)] → [言語 (Language)] → [言語の追加 (ADD LANGUAGE)] → [English] → drag "English (United States)" and drop it at the top.
- The folder names will not be changed from the language of the initial settings. Convert the folder names contained in "Setting Guide" (this manual), "Basic Manual", "Notes on Usage" into Japanese as per the following and operate.

English	Japanese
au Supports	auサポート
au Services	auサービス
Others Apps	その他アプリ

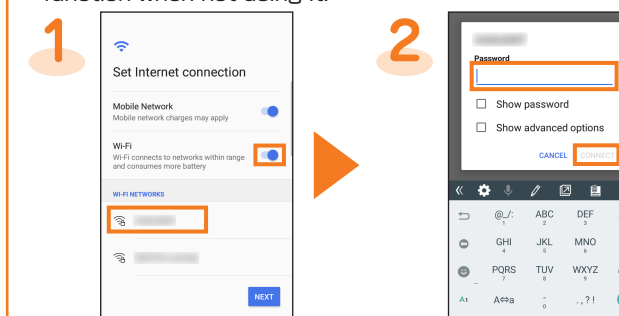
Initial Settings: STEP2

Setting Wireless LAN (Wi-Fi®)

Using the wireless LAN (Wi-Fi®) function, you can access to the Internet using a wireless LAN environment built in your home or a public wireless LAN environment away from home.
When setting the wireless LAN (Wi-Fi®) as described in this manual, you need to be in an environment where the radio waves can be received from the wireless LAN device or public wireless LAN that you want to access to.
Check the following information before setting the wireless LAN (Wi-Fi®) function.

SSID	The name set for the wireless LAN device or public wireless LAN service that you are connecting to
Password	The password for connecting to the wireless LAN device or public wireless LAN service

- * Connection to all public wireless LAN services is not guaranteed.
- * You may need a separate contract with a service provider to use some public wireless LAN services.
- * Enabling the wireless LAN (Wi-Fi®) function uses a lot of battery power. We recommend turning off the wireless LAN (Wi-Fi®) function when not using it.



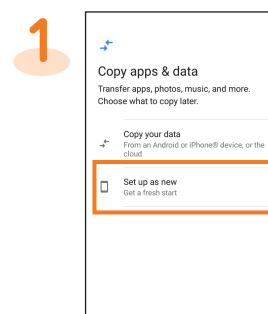
[<] of "Wi-Fi" → tap the network that you are connecting to

* If you do not set up, tap "NEXT".

Enter Password → [CONNECT] → confirm the connection → [NEXT]
* This step is not required if you select a wireless LAN (Wi-Fi®) network without security settings.

Initial Settings: STEP3

Setting Copy apps & data



[Set up as new]

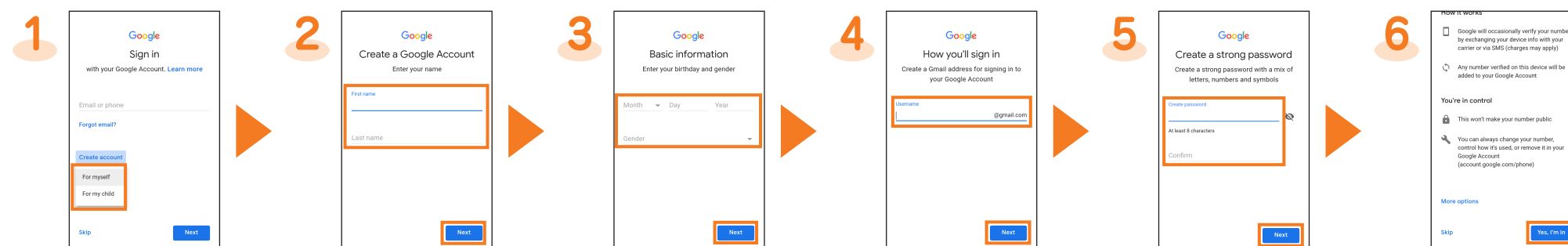
- To copy the settings of an Android device you used before to the product, tap "Copy your data".

Initial Settings: STEP4

Setting up Google account

You can use online services provided by Google, such as Gmail and Google Play, by setting up a Google account.

This section describes how to set up an account on the initial settings screen that appears when you turn on the power for the first time.



[Create account] → [For myself] / [For my child]¹⁾²⁾

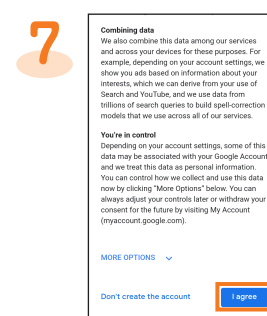
Enter your "First name" and "Last name" → [Next]

Enter your birthday and gender → [Next]

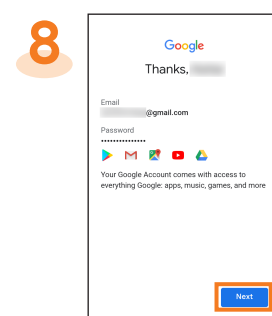
Enter your user name³⁾ → [Next]

Enter your password → re-enter the password → [Next]

Confirm the contents → [Yes, I'm in]



Confirm the contents → [I agree]



[Next]

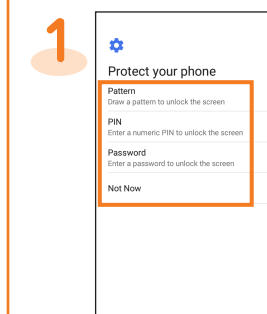
¹⁾ If you already have a Google account, tap the "Email or phone" field.

²⁾ In this manual, select "For myself". To create account for child, follow the onscreen instructions.

³⁾ User names already being used by another user cannot be used.

Initial Settings: STEP5

Setting for protecting the product

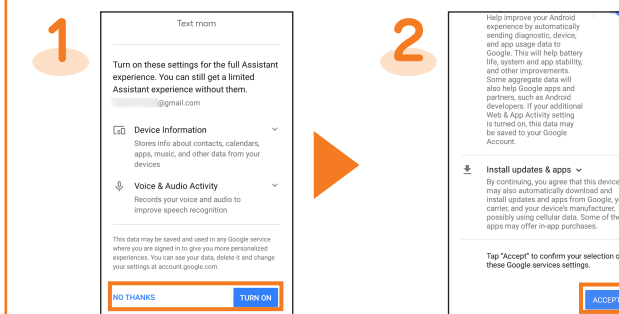


Set whether to protect the product

- To protect, tap "Pattern", "PIN" or "Password".
- To not protect, [Not Now] → [SKIP ANYWAY].

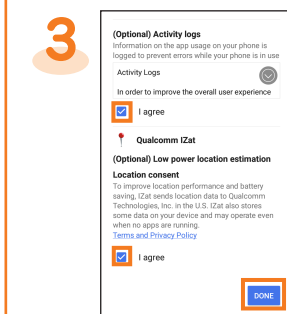
Initial Settings: STEP6

Other settings



Set whether to turn on the Google Assistant

Confirm the contents → [ACCEPT]



Check legal documents, etc. → place checkmarks on "I agree" → [DONE]

* After "Initial Settings" is completed, "au Initial Setting" needs to set. For details, please read the back page.

