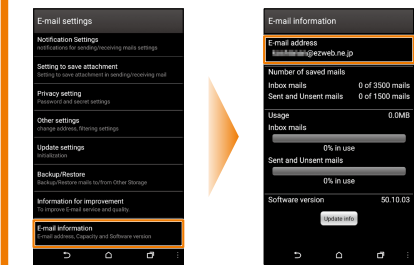






## E-mail (@ezweb.ne.jp) settings (continued)

■ **Checking your e-mail address**  
You can check your e-mail address from the E-mail settings screen.  
For the information on how to display the E-mail settings screen, see 'Changing your e-mail address' on the front side.



On the E-mail settings screen, tap **E-mail information**.  
This displays the e-mail address of the product.

### About PC mail settings

On the home screen, tap **Mail** ⇒ **Mail** to set up PC mail (POP3/IMAP), company Exchange Server mail, Gmail, Yahoo Mail, and Outlook.com.  
For details, refer to the "Instruction Manual application".

## Network settings

### ■ Wi-Fi connection settings

You can connect to the Internet using a wireless LAN (Wi-Fi) environment built in your home, or a public wireless LAN environment away from home.  
Before making wireless LAN (Wi-Fi) settings, check the following information.

SSID	The name set for the public wireless LAN service or wireless LAN device to be connected to
Password	The password to connect to the public wireless LAN service or wireless LAN device

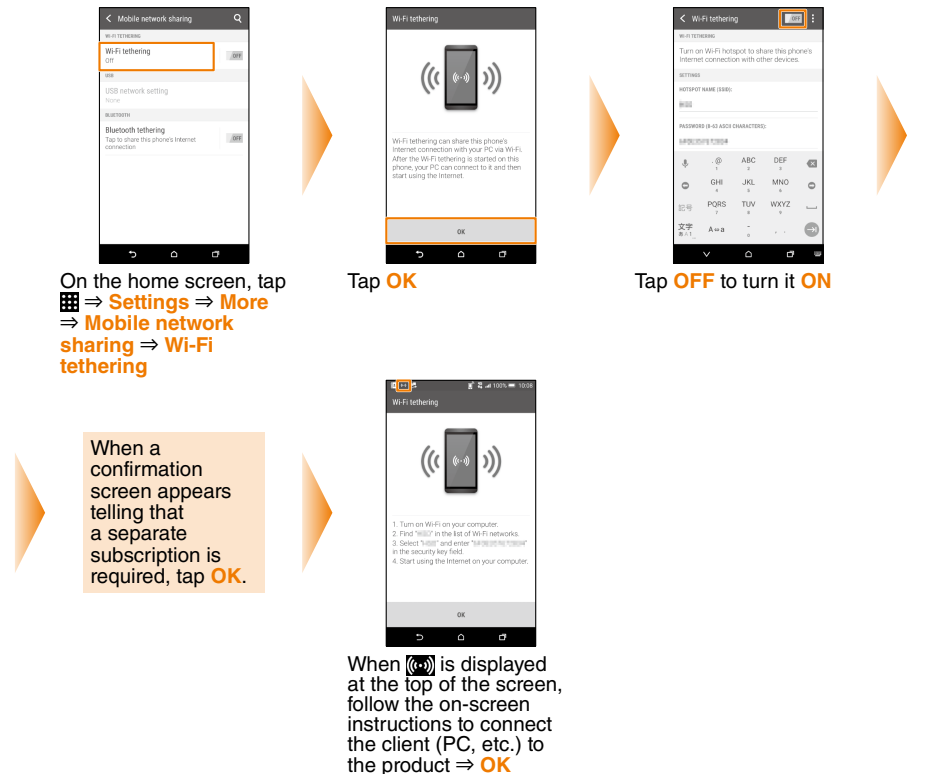
- ※ Connection to all public wireless LAN services is not guaranteed.
- ※ You may need a separate contract with the service provider to use some public wireless LAN services.
- ※ Enabling the wireless LAN (Wi-Fi) function uses a lot of battery power.
- ※ We recommend turning off the wireless LAN (Wi-Fi) function when not using it.
- ※ We recommend making security settings such as 'WEP' or 'WPA/WPA2 PSK' to prevent unauthorized access.

Perform this operation in the environment where you can receive signals from the wireless LAN devices that you want to access and the public wireless LAN service.

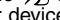
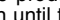


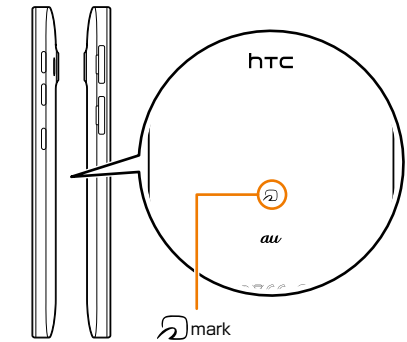
### ■ Setup of Wi-Fi tethering

You can use the product as the wireless LAN hot spot to enable Internet connection from the client (PC, etc.) that supports wireless LAN (Wi-Fi).  
※ To use the tethering function, a separate subscription is required.



## Sending and receiving data using Android Beam

Android Beam allows you to transfer the data between the product and any other device that has a NFC function.  
To send or receive data using Android Beam, both sending and receiving devices must have the NFC function activated.  
Ensure to keep the  section of the product aimed at the other device's  section until the data communication is complete.



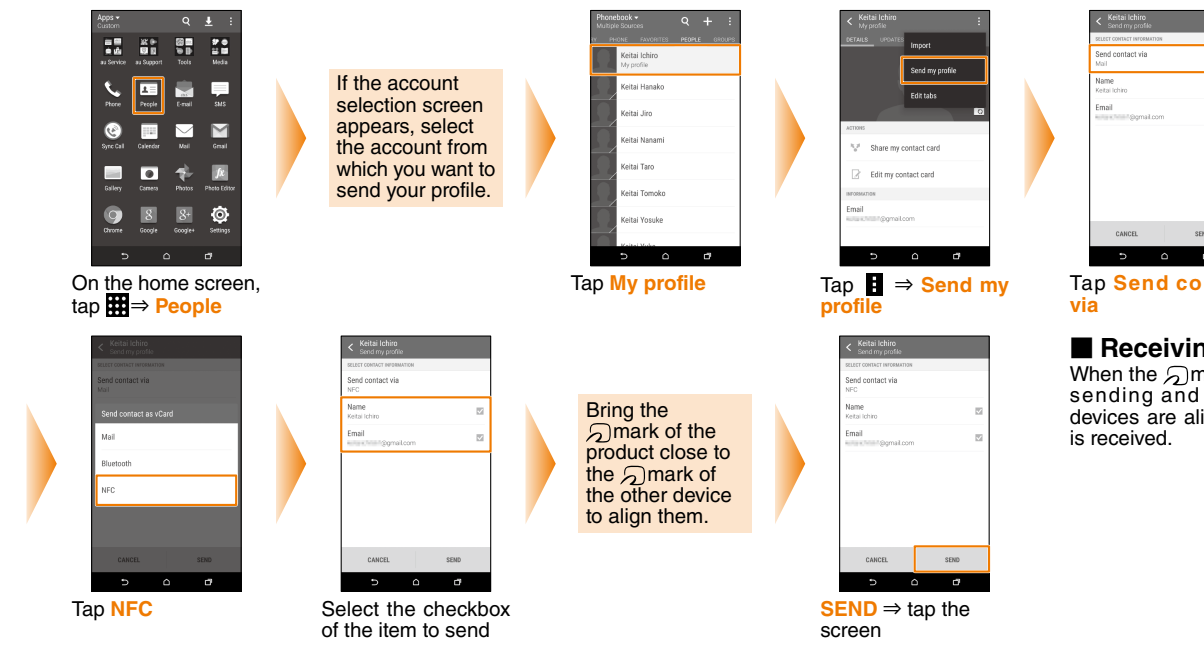
### ■ Setup of NFC function


In order to transfer data using Android Beam, NFC function must be activated.



### ■ Sending data

A user operation for sending data varies depending on the function. This section describes the operation to send a contact (profile).  
e.g.) When sending a profile

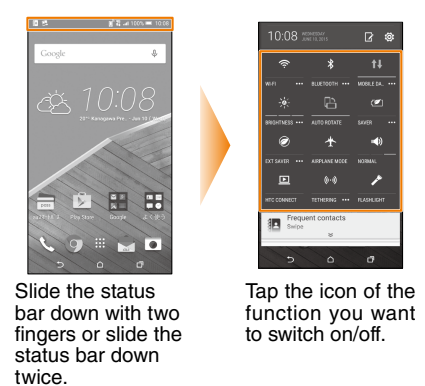


■ **Receiving data**  
When the  marks of the sending and receiving devices are aligned, data is received.

## Saving power

You can reduce battery power consumption by turning off functions (Wi-Fi, Bluetooth, Wi-Fi tethering and screen auto rotation, etc.) that are not being used on Quick Settings panel if you want to use the product for a long time.

### ■ Turning functions on/off

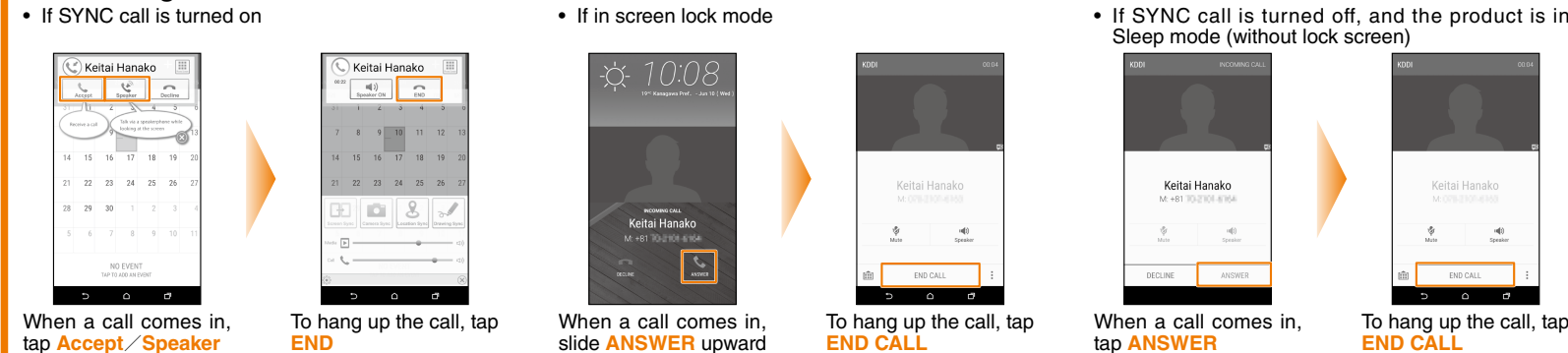


## Making and receiving calls

### ■ Making calls



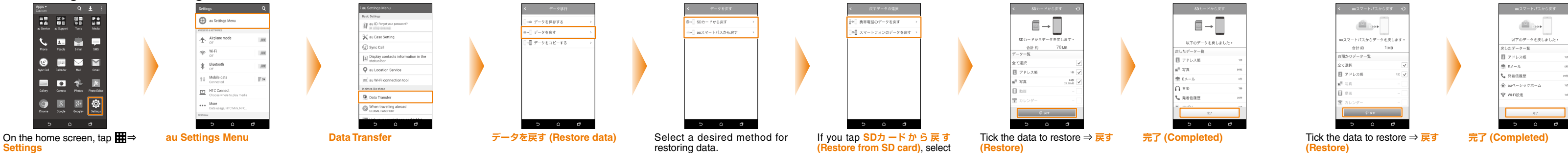
### ■ Receiving calls



## Transferring data with au Settings menu

You can back up or restore data to the product from your old au phone by using a microSD memory card or au Smart Pass server.  
• If you back up or restore data by using an au Smart Pass server, you need to set up an au ID.  
• If you restore data by using a microSD memory card, save the data from your old phone to the microSD memory card.  
※ In this document, 'microSD memory card', 'microSDHC memory card' and 'microSDXC memory card' are abbreviated as 'microSD memory card'.

### ■ Restoring data with au Settings menu



### ■ Backing up with au Settings menu



To automatically back up your photos and address book in the au Smart Pass server by using a data backup application, perform the following operations.

On the home screen, tap **Settings** ⇒ **au Settings Menu** ⇒ **Backup Setting** ⇒ **定期的に自動で預ける** (Run scheduled automatic backups)