

# ARROWS Tab FJT21 Setting Guide

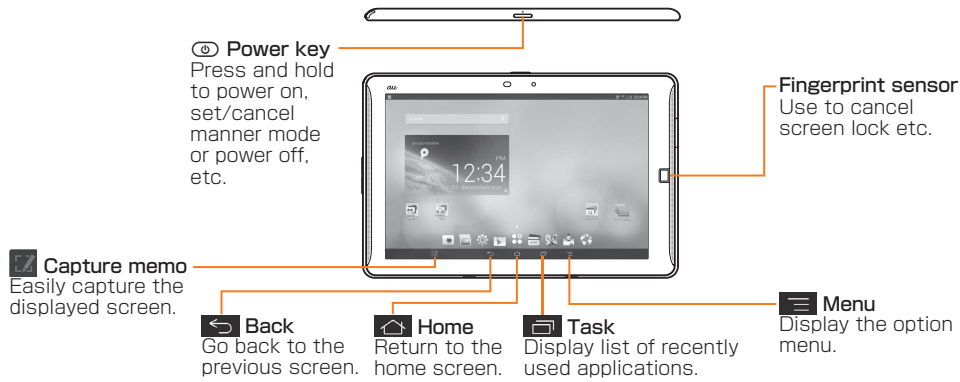
Thank you for buying the ARROWS Tab FJT21 (simply called the "FJT21"). In this guide, settings to start using this product and basic usage are described. For other settings or operations, refer to the Basic Manual.

- **Basic operations**  
Describes the basic operations.
- **STEP1 au Easy Settings**  
Describes au ID settings etc.
- **STEP2 ARROWS Getting started**  
Describes Google account settings etc.
- **E-mail initial settings**  
Make initial settings for E-mail (@ezweb.ne.jp).
- **Wireless LAN (Wi-Fi) setting**  
Describes how to connect Wi-Fi network.
- **Importing/Exporting contacts**  
Restore/back up contacts data.
- **Backing up E-mails**  
Back up E-mail to microSD card.
- **Data transfer to microSD card**  
Back up data to microSD card.

\* Explanations of this manual (wallpaper, icons, etc.) are based on the case when the Set Family use is set to "Standard mode".  
 \* Explanations of this guide are based on the case when entering characters in "NX!input".  
 \* All company names and product names are trademarks or registered trademarks of respective companies referred to in this guide.  
 \* The ™ and ® marks may be omitted in this guide.  
 \* In this guide, "microSD™ memory card (commercially available)", "microSDHC™ memory card (commercially available)" and "microSDXC™ memory card (commercially available)" are abbreviated as "microSD card".

## Basic operations

### Using keys



### Lock screen operation

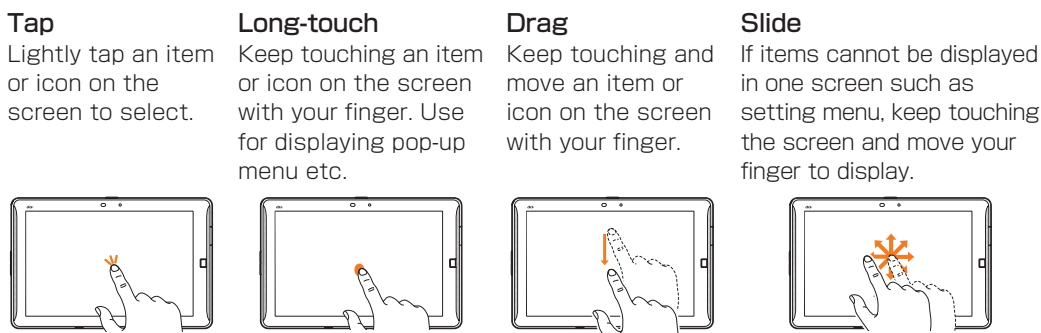
Lock screen prevents from erroneous operation. It appears when turning the power on etc. Pressing **Power key** during operation goes into sleep mode and the screen lock is set. Drag **Lock icon** to the desired direction or slide your finger over the fingerprint sensor to unlock the screen.

### Switching to English display

By default, FJT21 turns on in Japanese display. To switch to English display, power on→Unlock the screen lock→Press **Language & input icon** to skip the Japanese initial setting screen and then in the home screen, **Language & input icon** →"言語と入力 (Language & input)" →"Language"→"English". After that, power off and on again to make initial settings in English display.

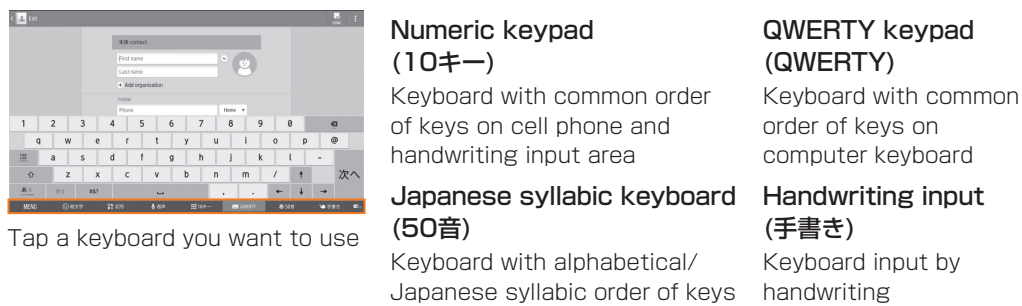
● When you tap **Help icon** for the first time, an explanation screen about how to select applications/widgets appears. Confirm the content and tap "Close" to display the main menu.

### Using the display (Touch panel)



### Switching keyboards

While entering the characters in "NX!input", switch keyboards as follows.



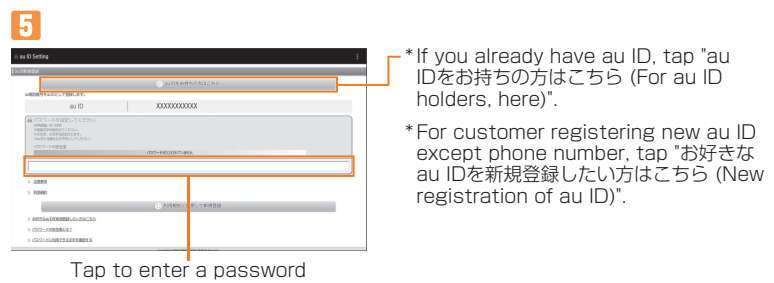
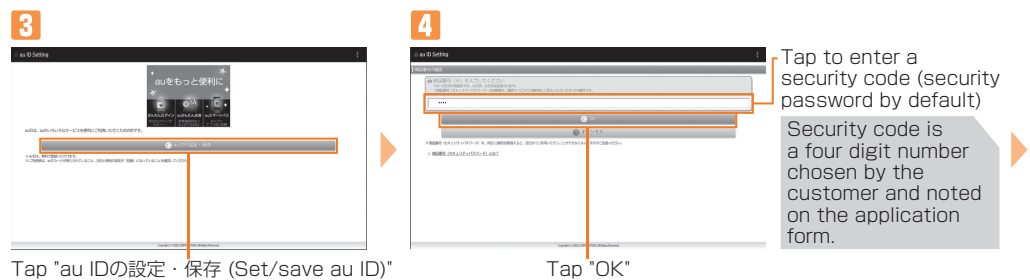
## STEP1 au Easy Settings

After switching the display language to English, turn the power off and on again. "Welcome to au" screen appears. Follow the onscreen instructions to make settings.

### 1-1 Setting au ID

By setting au ID, you can use various services provided by au such as "au Simple Payment Service" which allows you to purchase applications from the au Market or Google Play.

- au ID which is already used by another user cannot be set.
- When au ID is newly created, your own phone number will be registered as au ID. Register a password. You can change your au ID.
- Even if au ID is created on other than FJT21, the au ID is available on FJT21.



## 1-2 Setting of data handover

Set data handover.

**1** Set "Setting of data handover"→Tap "Next"

\* When there is data to transfer, set up and tap "Agree, and next".

## 1-3 Setting of backup

Back up contacts data.

**1** Confirm the Terms of Service/Outline of Service→Mark an item to set→Tap "Agree, and next"

## 1-4 au Widget Settings

au Widget is convenient and useful widget which delivers the latest information at the perfect time.

**1** Confirm the Terms of Service/Outline of Service→Mark service to use→Tap "Agree, and next"

## 1-5 Setup for emergency

Make the necessary settings in case of disaster, theft, loss or malfunction of the FJT21.

**1** Confirm the Terms of Service/Outline of Service→Mark service to use→Tap "Agree, and next"

**2** Tap "Finish"

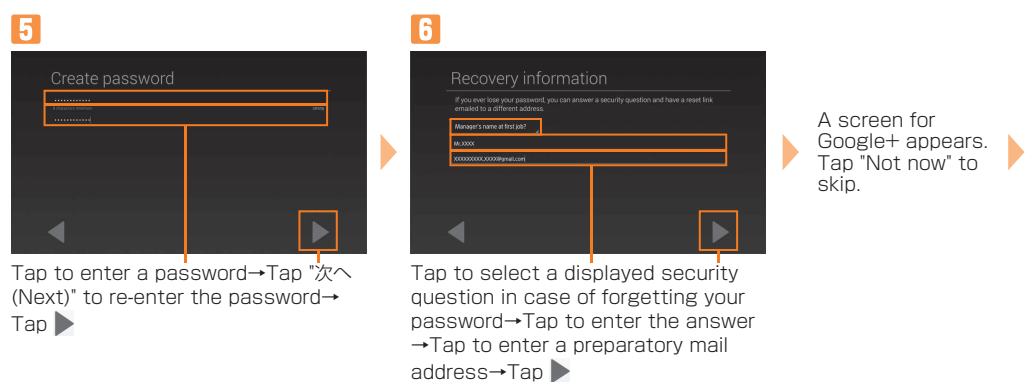
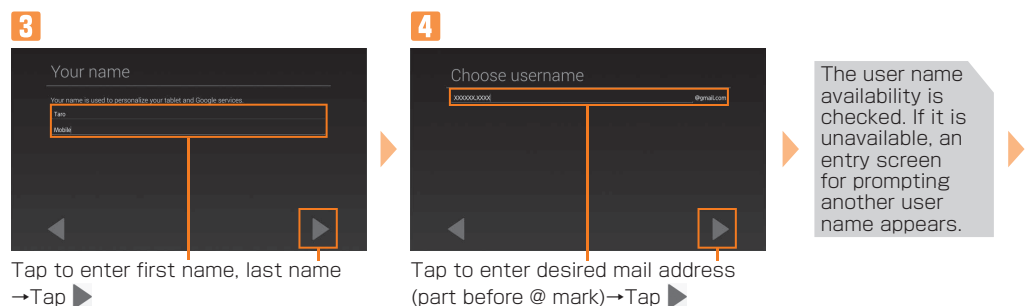
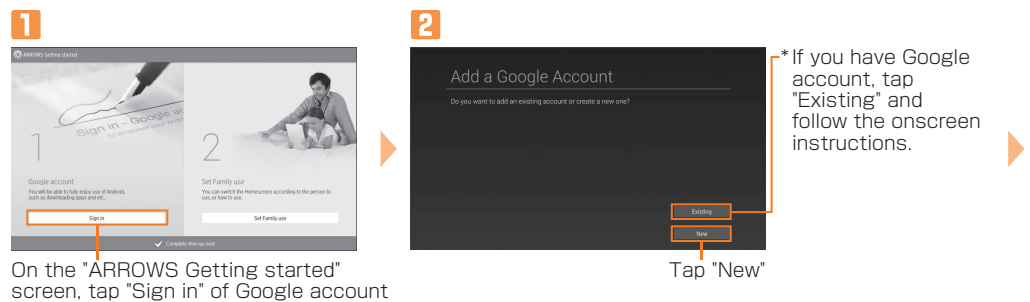
\* Mark "Don't show again" not to show the screen from the next time.

## STEP2 ARROWS Getting started

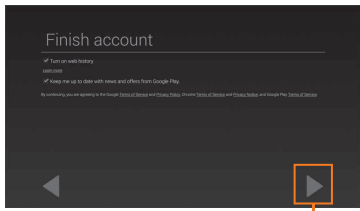
When you finish au Easy Setting, ARROWS initial setting screen appears.

### 2-1 Setting up Google account

- If you have created Google account on other than FJT21, the account can be used on FJT21.
- When you create Google account on FJT21, Gmail mail address "(user name)@gmail.com" will be created and set "(user name)@gmail.com" as main mail address in Google account.
- In "Recovery email address", set a different mail address used for contact from Google in case you forget your password etc. If you have no other mail, leave it as blank.



7



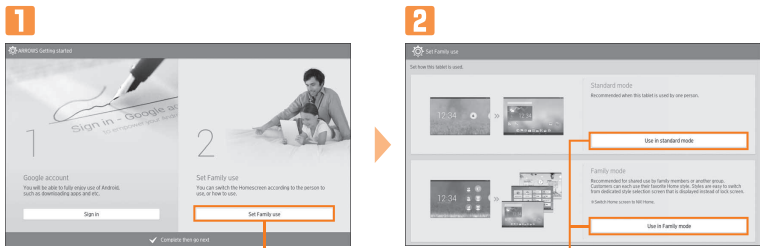
Confirm Terms of Service→Tap

Creating Google account starts. Follow the onscreen instructions to complete the setting.

● FJT21 does not support backup by Google account. When a screen for backup appears, at the first Google account setting, tap to end the setting.

## 2-2 Set Family use

When you have set Set Family use, you can select Set style from "Standard mode" to use FJT21 by yourself or "Family mode" to share FJT21 use with your family. Switching styles on the lock screen is available when setting to "Family mode".



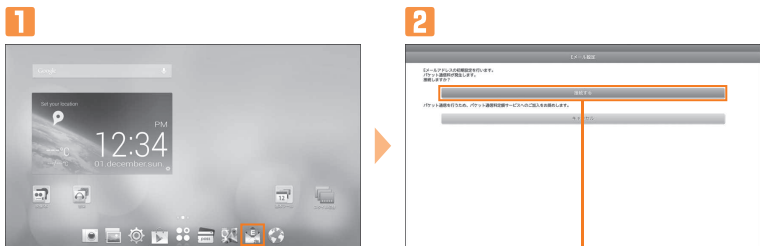
On the "ARROWS Getting started" screen, tap "Set Family use"

Tap "Use in standard mode"/"Use in Family mode"

Tap "Complete then go next"→"Start right now"

## E-mail Initial settings

- To use E-mail (@ezweb.ne.jp), subscription to LTE NET is required. If you did not subscribe it when you purchased the product, contact an au shop or Customer Service Center.
- It takes from 30 seconds to 3 minutes for the initial setting depending on time zone. Wait for a while on the "Eメールアドレスの設定中です。しばらくお待ちください。" (E-mail address setting is in progress. Please wait for a while)" screen.



In the home screen, tap (E-mail)

Tap "接続する (Connect)"

Initial settings are complete, E-mail address screen appears.  
\* Tap "閉じる (Close)" to display the E-mail top screen.

## Changing E-mail address

Although E-mail address is automatically decided by performing Initial settings, the E-mail address can be changed.

1. In the home screen, (E-mail)→ Tap "E-mail settings"
2. Tap "Other settings"→"接続する (Connect)"→"Eメールアドレスの変更 (Change E-mail address)"
3. Enter a security code and tap "送信 (Send)"→"承諾する (Accept)"  
\* Security code is a four digit number chosen by the customer and noted on the application form.
4. Enter in left section of "@" of E-mail address (changeable section) and tap "送信 (Send)"→"OK"

## PC-mail

Set up the mail account that you usually use on your PC etc. on FJT21 to send and receive mails to/from the FJT21. Obtain information necessary for settings from your ISP in advance to make a mail account settings. To activate PC-mail, in the home screen, tap →"Email".

## Wireless LAN (Wi-Fi®) setting

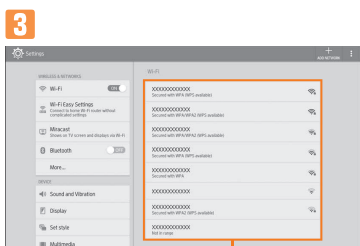
Use your home wireless LAN or public wireless LAN to connect internet service.

- Before setting wireless LAN (Wi-Fi®), check network name (SSID) and security key (password) you want to use.
- Operate in a place where signal of connecting access point can be received.



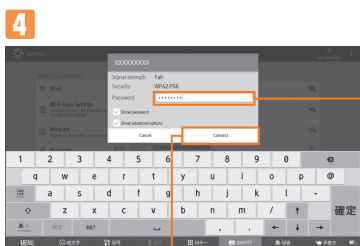
In the home screen, tap

Tap "Wi-Fi"→If "Wi-Fi" is "OFF", tap to turn "ON"



Tap an access point you connect

If connecting access point is not detected, register the access point manually. To register manually, tap "ADD NETWORK" and enter network SSID and security information.



Tap and enter a password (security key) set in the access point

\* If you select a network without security setting, this screen does not appear.

Example:  
When Security is "WPA2 PSK"

Tap "Connect"

When connected to access point, "Connected" appears on the selected network, and icon appears on the status bar.

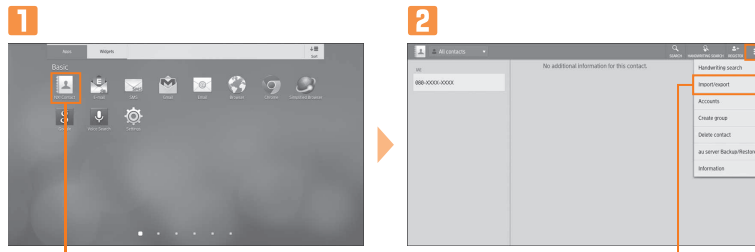
## Easy Wi-Fi® network connection

You can connect using a wireless LAN (Wi-Fi®) access point supporting AIOSS™ or WPS with simple operation.

In the home screen, → Tap "Wi-Fi Easy Settings"→"Easy Setting"/"AIOSS system"/"WPS system", and then operate on the access point.

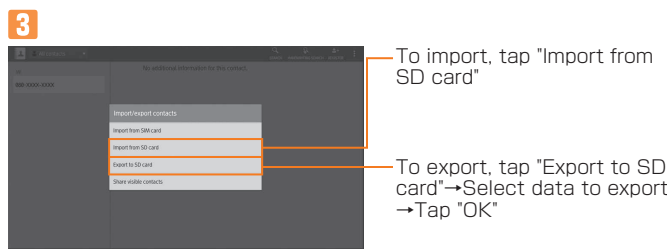
## Importing/Exporting contacts

Use NX! Contact to export contacts data to microSD card (backup) or import contacts data saved in the microSD card (restore). You are recommended to export data regularly to protect important data.



In the home screen, → Tap "NX! Contact"

→ Tap "Import/export"



To import, tap "Import from SD card"

To export, tap "Export to SD card"→Select data to export→Tap "OK"

When an account selection screen appears, select an account to import. When there are several files, select a file to import.

## Backing up E-mails

You are recommended to save backup data of E-mails of Inbox, Outbox, Unsent box to microSD card.

- 1 In the home screen, (E-mail)→ Tap "E-mail settings"→"Backup/Restore"
- 2 Tap "Mail Backup"→"OK"→Mark a checkbox you want to back up →Tap "OK"  
When microSD card is installed, data is saved to "/mnt/external\_sd/private/au/email/BU" folder.  
\* When microSD card is not installed, data is saved to "/storage/emulated/O/private/au/email/BU" folder in internal storage.

## Data transfer to microSD card

Data saved in the internal storage of FJT21 can be transferred to microSD card.

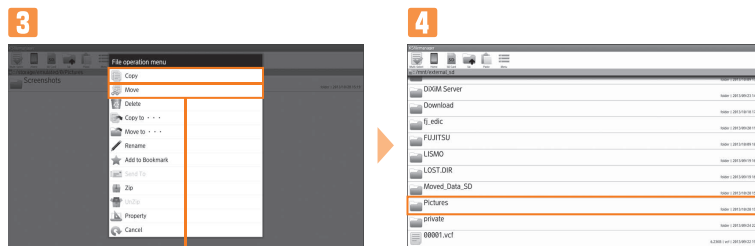
- Still images and videos data can be also transferred to microSD card by "Gallery" application.
- Data moved to microSD card can be restored by setting back to the original folder in the internal storage.

\* microSD card is not included. Please prepare microSD card (commercially available) as required.



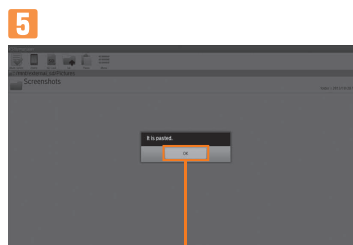
In the home screen, → Tap "KSfilemanager"

→ Tap "File Manager"



Tap "Home"→Long-touch a folder to store the data→Tap "Copy"/"Move"

Tap "SD Card"→Tap a folder to copy/move



Tap "Paste"→"OK" when finished

## Data saving folders

Data type	Folder location in internal storage
Still images and videos shot with Camera	/storage/emulated/O/DCIM/Camera (When "Save" is set to "Terminal")
Attachment data in received E-mail (@ezweb.ne.jp) or saved images inserted in the message (including D-pictogram)	/storage/emulated/O/private/au/email/MyFolder
E-mail Inbox backup data E-mail Outbox backup data E-mail Unsent backup data	/storage/emulated/O/private/au/email/BU/RE /storage/emulated/O/private/au/email/BU/RE /storage/emulated/O/private/au/email/BU/DR (When microSD card is installed, data is saved to "/mnt/external_sd/private/au/email/BU" automatically.)
Data saved by Browser	/storage/emulated/O/Download (When "Download file save-to destination" is set to "Built-in storage preferred")