

- Packet communication in use
 - Signal status
 - Out of service area
 - Airplane mode
- * For more icons, see "取扱説明書制作版 (Full Instruction Manual)" (Japanese).

Notification panel

When a notification icon appears, open the notification panel to check the notification. Also you can use various functions with it.

- Drag the status bar downward**



- Status panel switch**
 - Turn each function ON/OFF etc.
- Clear notification**
 - Clear notifications in the notification panel.
- Settings**
 - Make various settings.
- Notified/running item**
 - Check notification details such as missed calls etc. or make necessary settings.
- Close the notification panel**
 - Drag upward to close the notification panel.

— 24 —

Character input

Use the software keyboard displayed on the screen of the FJL22 to enter characters.

Keyboard

You can use ATOK (NXInput) for Japanese, NXInput for Korean or Chinese (simplified), or the Google keyboard to enter characters.

Tap the character entry field to display the keyboard. Tap to hide the keyboard.



memo

- The Google keyboard is mainly used for inputting English. Japanese cannot be input.
- In this manual, operations using "NXInput" for character entry are described as examples.

- Switching the input method of keyboard**
- In the home screen, -->"Settings"-->"Language & input"-->"Default"**
- Tap an input method**
 - To make advanced settings for input method, tap up input methods'--> of each input method.

— 30 —

Using 災害用音声お届けサービス (Disaster Voice Delivery Service)

Disaster Voice Delivery Service is a service which allows you to record your voice and send someone you want to inform your well-being in case of a large-scale disaster.

- In au災害対策 (au Disaster Countermeasure) menu, "災害用音声お届けサービス (Disaster Voice Delivery Service)"**

- Sending voice (send)**

Select "声をお届け (Send voice)" and "①お届け先を選択 (Select a send destination)"-->"②お届けしたい声の種類 (Record your voice)".

- You can select sending destination from the Contacts.

- Receiving voice (receive)**

Reception of voice message can be notified via pop-up screen or SMS. Receive (download) the voice message to play.
* If the recipients device is a smartphone that has not launched "au災害対策 (au Disaster Countermeasure)" application supporting Disaster Voice Delivery Service or au cell phone, notifications are sent by SMS.
* Notifications made by SMS cannot be saved to au Disaster Countermeasure application.

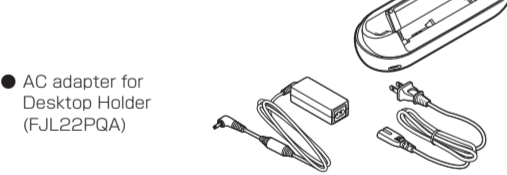
memo

- To use via Wi-Fi*, initial settings via LTE/3G network are required.
- Voice message can be recorded for up to 30 seconds.
- Messages can be sent and received to/from au cell phones, NTT DCOMO and SOFTBANK cell phones.
- Voice message may be difficult to hear if the media volume is low or silent mode is set.
- Saving or playing Voice messages may fail if a phone does not have available memory.
- Some cell phones do not support receiving voice messages. For details, refer to au homepage.

— 36 —

Introduction of related accessories

- Rapid charging desktop holder (FJL22PUA)



- AC adapter for Desktop Holder (FJL22PGA)

- TV antenna cable compatible with Full Seg (01FJHSA)

- Portable charger Q2 (0301PFA) (sold separately)



- Common DC adapter Q3 (0301PEA) (sold separately)
- au Carrying Case F Black (0105FCA) (sold separately)
- au Carrying Case G Black (0106FCA) (sold separately)

- microUSB cable O1 (0301HVA) (sold separately)
- microUSB cable O1 Navy (0301HBA) (sold separately)

— 42 —

memo

- You can apply for membership only at the time of purchasing your au cell phone.
- Once you cancel the membership, you cannot reply for it until you purchase an au cell phone next time.
- Note that when changing the model or purchasing an extra cell phone, this service only covers the most recently purchased au cell phones.
- When an au cell phone is handed over to you or someone else, the Secure cell phone support plus LTE membership is also handed over to the successor of the cell phone.
- When you get a new au cell phone by changing the model or purchasing an extra cell phone, the "Secure cell phone support plus "Secure cell phone support plus LTE" membership for the old au cell phone is automatically canceled.
- Service contents are subject to change without notice.

- au Micro IC Card (LTE)**

The au Micro IC Card (LTE) is lent to you by au. In case of loss or damage, the extra cell phone, will be replaced at your expense. When malfunction is suspected, or in case of theft or loss, contact an au shop or PiPi.

- After-sales service**
 - If you are unsure about anything regarding after-sales service, contact the following service contact.
- Customer Service Center (for service canceling procedure or operation in case of loss or theft)**
- From a land-line phone **☎0077-7-113**(toll free)
- From an au cell phone 113 without area code (toll free)
- Secure cell phone support center (for loss, theft, damage)**
- From a land-line phone/From an au cell phone **☎0120-925-919** (toll free)
- Business hours 9:00 - 21:00 (7 days a week)

— 48 —

Using the home screen

The home screen is the starting point for all operations on the FJL22. By tapping , you can return from anywhere. In the home screen (NXI/Home), you can use the following convenient functions.

Handwriting search: In the home screen, -->"Handwriting search"-->Slide the screen and enter characters to search applications etc.

Easy folder creation: Just overlap icons to create a folder. It is convenient for managing icons because stored icons are displayed.

Dock customize: Set up to 4 application icons freely. You can set a folder, too.

Home settings: In the home screen, -->"Tap "Home settings" to change design theme of the home screen and main menu, edit pages, etc.

Thumbnail view: Flicking up on the home screen to turn to thumbnail view. You can sort, add or delete home screens.



- Status bar tab**
 - Drag downward to open the notification panel.
 - By default, the status bar tab is not displayed but you can operate as status bar.

— 25 —

Inputting with the Numeric keypad

- When QWERTY keypad is displayed, "MENU"-->"テンキー (Numeric keypad)"**
 - For number input mode, only one-by-one characters can be input.
- Input characters**
 - Operations vary by input mode.

Inputting with the QWERTY keypad

- When Numeric keypad is displayed, "MENU"-->"QWERTYキー (QWERTY keypad)"**
- Input characters**

memo

- When is ON (light blue), you can input characters by sliding on the keypad (Handwritten input).
- Prediction conversion candidates corresponding input Kana characters appear. Tap a word you want to input.
- Tap to delete a character preceding the cursor position.
- Tap "MENU"-->"記号 (symbol)/"顔文字 (emotion)" to display list of emotion, smiley (only when input is available) and symbol, and input them.
- Tap "MENU"-->"ATOKスタイル (ATOK direct)"-->"Password manager" to quote authentication information such as ID, password, etc. registered to the Password manager.
- Click up/down/left/right to input characters in each column of kana syllabary on the Numeric keypad (Flick input). Or slide up/down/left/right to input characters in each column of kana syllabary or dakuten/handakuten/youn etc. (Gesture input). By default, "Flick input" is set to ON.
- To interrupt character entry and return to the previous screen, tap .

— 31 —

Using Disaster Information/Website for Donation

Check history of disaster/evacuation information delivered from local municipalities, disaster information portal sites and websites for donation.

- In au災害対策 (au Disaster Countermeasure) menu, "災害情報・寄付金サイト (Disaster Information/Website for Donation)"**
- Select item to check**

File management

Using microSD card

- FJL22 supports up to 2 GB microSD card, up to 32 GB microSDHC card and up to 64 GB microSDXC card.
- Do not remove microSD card, turn off the power or subject it to shocks while accessing data on a microSD card. It may result in damage to data.
- Using a microSD card whose speed class is Class 4 or more is recommended.
- For compatible microSD card/microSDHC card/microSDXC card, contact each microSD card manufacturer or refer to au homepage.

- AC Adapter JUPITRIS (White) (L02P001R) (sold separately)**
- AC Adapter JUPITRIS (Red) (L02P001R) (sold separately)**
- AC Adapter JUPITRIS (Blue) (L02P001L) (sold separately)**
- AC Adapter JUPITRIS (Pink) (L02P001P) (sold separately)**
- AC Adapter JUPITRIS (Champagne) (L02P001N) (sold separately)**
- Common AC Adapter Q3 (0301PQA) (sold separately)**
- Common AC Adapter Q3 Navy (0301PBA) (sold separately)**
- Common AC Adapter Q3 Green (0301PGA) (sold separately)**
- Common AC Adapter Q3 Pink (0301PPA) (sold separately)**
- Common AC Adapter Q3 Blue (0301PLA) (sold separately)**
- Common AC Adapter Q4 (0401PWA) (sold separately)**

- Note that your AC adapter may be different from this illustration.
- AC Adapter JUPITRIS (each color) has the same specifications with Common AC Adapter Q3.

memo

- For the latest information on accessories, visit the au homepage (<http://www.au.kddi.com/>) or contact the Customer Service Center.
- The FJL22 does not support ASYNC/FAX transmission.
- Accessories described on this page can be purchased from the au Online Shop. However, some accessories may not be purchased. From a PC: <http://auonlineshop.kddi.com/>

au after-sales service information

	Service		Secure cell phone support plus LTE	
		Members	Free of charge	Others
Replacement card delivery service	Spontaneous failure	1st year	Free of charge	No recompense
		2nd year or later	Customer charge 1st: 5,250 yen 2nd: 9,400 yen	
Holding over and repair	Partially damage, water soak, irreparable damage, theft or loss	1st year	Free of charge	Free of charge
		2nd year or later	Free of charge (three-year warranty)	Actual cost
	Partially damage		Customer charge Upper limit: 9,250 yen	
	Water soak irreparable damage		10,500 yen	
	Theft, loss		No recompense	No recompense (model change)

* Charge amounts are all tax-included.

- Search keyword (Quick search box)**
 - Tap to search application in the FJL22 or Web page information.
- Screen display position**
- Dock menu**
 - Tap an icon to start application or function.
- Navigation keys**
 - Go back to the previous screen.
 - Return to the home screen. Long-touch to activate/and the recently used applications.
 - Display options menu available on the current screen.
 - Tap or to slide the displayed screen downward. By tapping , the screen returns to full screen view.
- Customize area**
 - Locate shortcuts or widgets of applications freely.
- Main menu button**
 - Display main menu.

Starting an application or function from the home screen

From the dock menu on the home screen or customize area, you can start applications or widgets registered to the FJL22.

- In the home screen, tap an item to start**
 - When you tap an application icon or widget to use function, communication fees may be charged depending on the function.

memo

- Screen to select application may appear when there are multiple applications available to jump to link of webpage, to select images, etc. In that case, follow the onscreen instructions to select application.

— 26 —

Phone

Making a call

- In the home screen, (NXI Dial)**
 - Alternatively, in the home screen, tap -->"NXI Dial".
- "PHONE"-->Enter a phone number**
 - When calling to a fixed-line phone, enter the phone number starting with the area code even if you are in the same area.
- "Outgoing call"**
- When you have finished the call, "End"**
 - During a call, press to adjust listening volume (volume of the other party's voice).

Receiving a call

- You have an incoming call**
- "Answer"**
 - If an incoming call is received in sleep mode or while the unlock screen is displayed, drag to the right end.
- When you have finished the call, "End"**

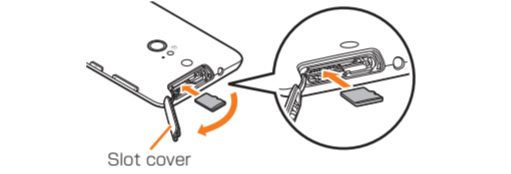
Checking own phone number

- In the home screen, -->"Settings"-->"Profile"**
 - Your phone number etc. is displayed.
 - You can check your own phone number on the contact list of NXI Contact.

— 32 —

Installing/removing microSD card

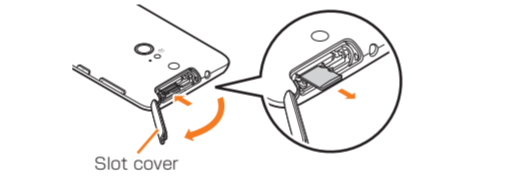
- Installing**
- Put the display side down and open the slot cover**
- Insert and push microSD card straight in facing the metal terminal down**



- Close the slot cover and ensure that the cover is not partially open**

- Removing**

- Put the display side down and open the slot cover**
- Push microSD card lightly and release your finger**
- When microSD card comes out for a little, pull it straight out**



— 38 —

Using commercially available stereo earphone

By connecting stereo earphone (commercially available) to the stereo earphone terminal of the FJL22, you can hear the other party's voice during a call or playback sound of video/music with the stereo earphone.

- Insert a plug of the stereo earphone to the stereo earphone terminal of the FJL22**
- "Phone MIC (the microphone of the FJL22)"/"Headset MIC"**
 - When "Enable launcher function" of the EARPHONE PLUG-IN LAUNCHER SETTING is marked, the Earphone launcher screen is displayed. You can quickly activate application using earphone connected.

memo

- Make sure that no dust or water drop is inside the stereo earphone terminal when connecting stereo earphone plug to the stereo earphone terminal.
- When watching TV, connect the supplied TV antenna cable and stereo earphone to use it.

— 44 —

memo

- Replacement cell phone delivery service**
 - When you have trouble with your au cell phone, replacement cell phone (same model, same color) is delivered by calling to. Return your damaged cell phone within 14 days after replacement cell phone is delivered.
 - Available up to twice in a year from the day you use this service as a start day. If you do not use this service in the past year at the subscription to this service, it will be 1st and if you use, it will be 2nd.
 - * For details, refer to au homepage.
- Holding over and repair**
 - Damages and malfunctions intentionally caused by the customer as well as those due to modification (e.g. disassembly, change of parts, painting, etc.) by the customer are not covered by this service.
 - You cannot receive a refund for replacement of the outer casing due to stains, scratches, paint removal, etc. on the outer casing.

— 44 —

Using the main menu

Application icons/widgets installed to the FJL22 appear in a list. Tap an application icon to start the application.

- In the home screen,**
 - The main menu appears.
 - Tapping "Apps"/"Widgets" in the main menu switches the application list/widget list.
- Tap function/item to start**
 - When you tap an application icon to use function, communication fees may be charged depending on the function.
 - To add widget in the home screen, long-touch a widget-->Drag to the home screen.

Displaying menu

There are 2 types of menu for the FJL22: option menu which is displayed by tapping and pop-up menu which is displayed by tapping or long-touching entry field or item.

— 27 —

Using au災害対策 (au Disaster Countermeasure)

au災害対策 (au Disaster Countermeasure) is an application in which you can use Disaster Message Board or Emergency early warning mail (earthquake early warnings and disaster/evacuation information, tsunami warning), 災害用音声お届けサービス (Disaster Voice Delivery Service).

- In the home screen, -->"au災害対策 (au Disaster Countermeasure)"**

Using Disaster Message Board

Disaster Message Board service enables you to register information of well-being from an area of distress via LTE NET in case of large-scale disaster such as earthquake with a seismic intensity of over 6 lower. Registered information can be viewed on any cell phones and PCs besides by au cell phone users.

For details, refer to "Disaster Message Board" of au homepage.

- In au災害対策 (au Disaster Countermeasure) menu, "災害用伝言板 (Disaster Message Board)"**
 - Follow the onscreen instructions to register/confirm.

memo

- To register information of well-being, E-mail address (～@web.ne.jp) is required. Set up E-mail address beforehand.
- Clearing and changing 災害お知らせメール設定 (safety notification mail setting) is unavailable while wireless LAN (Wi-Fi)* is connected.

— 33 —

Close the slot cover and ensure that the cover is not partially open

memo

- Insert a microSD card with the right side up in the appropriate direction. Inserting a microSD card forcefully into the slot could result in failure to remove the microSD card or damage to the microSD card.
- Do not touch the terminal part of microSD card.
- Do not remove the microSD card forcibly. It may result in damage to the microSD card or the data loss.
- Always confirm that data transfer is finished before removing microSD card. And then, in the home screen, -->"Settings"-->"Storage"-->"Unmount SD card"-->Tap "OK" to remove.
- Some applications may not be available when microSD card is not inserted.

— 33 —

Settings

Viewing the Settings menu

Set or manage functions of the FJL22. You can set for eco-mode and Security from the menu.

- In the home screen, -->"Settings"**
 - Settings screen appears.
 - Alternatively, in the home screen, tap -->"Settings".

— 39 —

Updating software

Execute software update to make software of FJL22 the latest one.
* To execute software update, any of LTE/3G data communication or wireless LAN (Wi-Fi)* environment is required.

If you use LTE/3G data communication, packet communication fee is charged.

- There are 2 methods to update: receiving update notification and then updating and checking if software update is needed and then updating. Regardless of update methods, FJL22 reboots automatically before and after software update.

Updating by receiving update notification

- Receive a notification of software update**
 - appears on the status bar.
 - During Wi-Fi* network connection, does not appear. Downloading data for software update starts automatically. Go to Step **4**.
- Drag the status bar downward-->"New Software Available"**
- In the software update screen, "Download"**
 - Downloading data starts and a confirmation screen appears when update is complete.

- Updating immediately**

- "Update now"**
 - FJL22 reboots and the software update starts.

- To specify date and time to update**

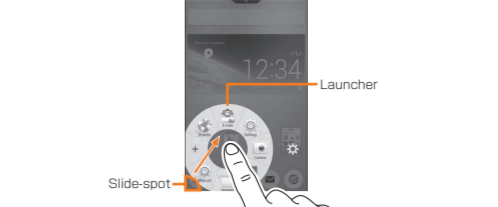
- "Specify update date"-->Set date-->"Done"-->Set time-->"Done"**
 - Update starting date and time is set.

— 45 —

Main specifications			
Size (HxWxD)	Approx. 140 X 71 X 10.1 mm		
Weight	Approx. 149 g		
Continuous standby time ¹⁾	In Japan	Approx. 740 hours (3G)	
	Overseas (GSM)	Approx. 650 hours (LTE)	
Continuous call time ²⁾	In Japan	Approx. 940 minutes	
	Overseas (GSM)	Approx. 680 minutes	
Continuous tethering time	Approx. 630 minutes (3G on WAN)		
Wi-Fi* tethering maximum connection	Approx. 540 minutes (LTE on WAN)		
Charging time by desktop holder	Approx. 110 minutes ³⁾		
Charging time by Common AC Adapter Q4 (sold separately)	Approx. 180 minutes		
Charging time by Common DC adapter Q3 (sold separately)	Approx. 350 minutes		
Display	Type	TFT display with RAM	
Number of effective pixels: Out-camera	Size	Approx. 5.0 inches	
	Dots (HXV)	1,080 X 1,920 (Full HD)	
Number of effective pixels: In-camera	Resolution	Approx. 13.1 million pixels	
	Digital zoom	Up to approx. 12.9 x (32 levels)	
Wireless LAN (Wi-Fi)* function	IEEE802.11a/b/g/n/ac compatible (for Wi-Fi* tethering, IEEE802.11b/g/n)		

Using Slide-in-function

Slide your finger from the screen end (Slide-spot) to the center to display the launcher of applications (Slide-in launcher) or activate screen memo function (Capture memo) with which you can capture the displayed screen. Slide-in-function can be available in any screen. You can start the frequently-used application or screen memo function quickly at any time.



— 28 —

Setting manner mode

Setting manner mode mutes ringtones etc. so that you do not disturb people around you in public places.

- In the home screen, -->"Settings"-->"Sound and Vibration"-->"Manner Mode"-->Mark "Enable manner mode"**
 - The manner mode icon is displayed in the status bar.
 - Alternatively, press and hold until the phone options menu is displayed and tap a set manner mode type to set/cancel the