

# au ARROWS ef FJL21 Setting Guide

## Introduction

Thank you for buying the ARROWS ef FJL21 (simply called the "FJL21"). To download Android applications or send/receive mails with FJL21, you need to make settings. Also, make settings for using wireless LAN (Wi-Fi®) function. Follow this guide to make the settings.

For other settings or operations, refer to Basic Manual.

※Explanations of this guide are based on the case when the device color of the FJL21 is "Solid Black" with default setting (home theme such as wallpaper and icons) as an example.

※Explanations of this guide are based on the case when entering characters in "NX!input".

※All company names and product names are trademarks or registered trademarks of respective companies referred to in this guide.

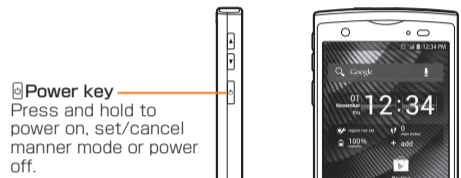
※The TM,® marks may be omitted in this guide.

※microSD card is not included. Please prepare microSD card (commercially available) as required.

- Checking basic operations
- STEP1 Initial settings
- STEP2 au Easy Settings
- STEP3 E-mail Initial settings
- STEP4 Easy data transfer support
- STEP5 Wireless LAN (Wi-Fi®) function setting
- Calling
- Importing/Exporting contacts
- Backing up e-mails
- Data transfer to microSD card
- Infrared communication

## Checking basic operations

### Using keys



**Power key**  
Press and hold to power on, set/cancel manner mode or power off.

**Back**  
Go back to the previous screen.

**Home**  
Return to the home screen.

**Menu**  
Display the option menu.

● When you tap **ⓘ** for the first time or when you tap **ⓘ** on home screen, a guide for operation appears. Mark "以後表示しない (Do not display again)" not to show the guide after that time.

### Lock screen operation

Lock screen prevents from erroneous operation. It appears when turning the power on etc. Pressing **⏻** during operation goes into sleep mode and the screen lock is set.

Drag **⏻** right/Slide your finger over the fingerprint sensor to unlock the screen.

### Switching to English display

By default, FJL21 turns on in Japanese display. To switch to English display, power on→Unlock the screen lock→Press **⏻** to skip the Japanese initial setting screen and then in the home screen, **⏻**→"本体設定 (Settings)"→"In ユーザー設定 (PERSONAL)"→"その他..." (More...)"→"言語と入力 (Language & input)"→"Language"→"English". After that, power off and on again to make initial settings in English display.

### Using the display (Touch panel)

**Tap**  
Tap lightly an item or icon on the screen to select.

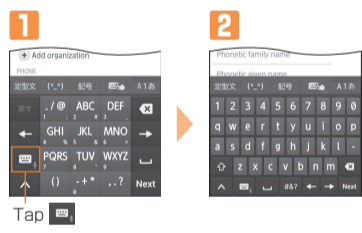
**Long-touch**  
Keep touching an item or icon on the screen with your finger. Use for displaying pop-up menu etc.

**Drag**  
Keep touching and move an item or icon on the screen with your finger.

**Slide**  
If items cannot be displayed in one screen such as setting menu, move your finger touching the screen to display.

### Switching keyboards

While entering the characters in "NX!input", switch keyboards as follows.



Tap **⏻**

### Handwriting input

Write a character with your finger in handwriting area. When "Overwrite handwritten input" is on, when Numeric keypad (Keitai entering fixed) or QWERTY keypad is displayed, dot line frame indicating handwritten input area appears and you can use handwritten input.

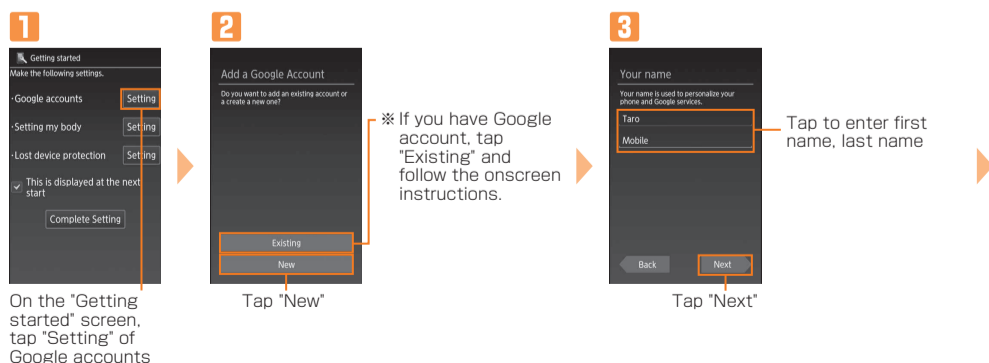


## STEP 1 Initial settings

"Getting started" screen appears when you power on after the display is switched to English. Make each setting according to the onscreen instructions and tap "Complete Setting".

### 1-1 Setting up Google account

- If you have created Google account on other than FJL21, the account can be used on FJL21.
- When you create Google account on FJL21, Gmail mail address "(user name)@gmail.com" will be created and set "(user name)@gmail.com" as main mail address in Google account.
- In "Recovery email address", set a different mail address used for contact from Google in case you forget your password etc. If you have no another mail, remain as blank.



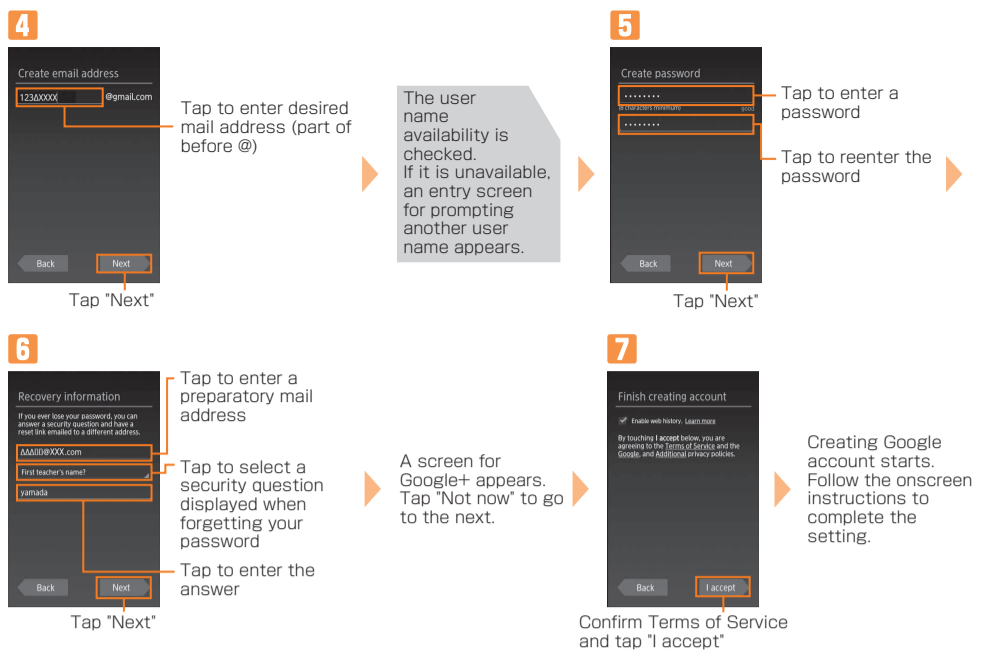
On the "Getting started" screen, tap "Setting" of Google accounts

Tap "New"

Tap "Next"

※ If you have Google account, tap "Existing" and follow the onscreen instructions.

Tap to enter first name, last name



Tap "Next"

Tap "Next"

The user name availability is checked. If it is unavailable, an entry screen for prompting another user name appears.

Tap to enter a password  
Tap to reenter the password



Tap "Next"

Confirm Terms of Service and tap "I accept"

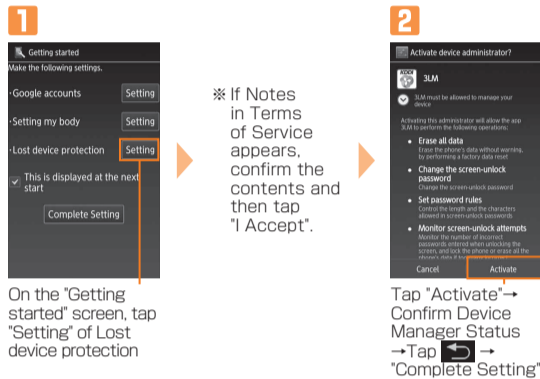
A screen for Google+ appears. Tap "Not now" to go to the next.

Creating Google account starts. Follow the onscreen instructions to complete the setting.

● FJL21 does not support backup by Google account. When a screen for backup appears for the first Google account setting, tap "Next" to end the setting.

## 1-2 Settings in case of loss of the product

Make necessary settings in case of theft or loss of your FJL21.



On the "Getting started" screen, tap "Setting" of Lost device protection

※ If Notes in Terms of Service appears, confirm the contents and then tap "I Accept".

Tap "Activate"→Confirm Device Manager Status→Tap **⏻**→"Complete Setting"

● If you subscribe to Anshin Security Pack, set up "ウイルスバスター™ モバイル for au (VirusBuster mobile for au)" after initial settings are complete. In the home screen, **⏻**→"auお客さまサポート (au Customer Support)"→"サポート&サービス (Support & service)"→"安心セキュリティバック (Anshin Security pack)"→"ウイルスバスター モバイル for au (VirusBuster mobile for au)". When you activate for the first time, a confirmation screen for license agreement appears. Check the contents, then tap "同意する (Agree)".

## STEP 2 au Easy Settings

When "Complete Setting" is tapped on the "Getting started" screen, an au Easy Setting screen appears.

### 2-1 Setting au ID

By setting au ID, you can use various services provided by au such as "au Simple Payment Service" which allows you to purchase applications from the au Market or Google Play.

- au ID which is already used by another user cannot be set.
- When au ID is newly created, your own phone number will be registered as au ID. Register a password. You can change your au ID.
- Even if au ID is created on other than FJL21, the au ID is available on FJL21.



On the au Easy Setting screen, tap "Next"→On au ID explanation screen, tap "Registration"

Check the contents, then tap "OK"

Tap "au IDの設定・保存 (Set/save au ID)"

Tap to enter a security code (security password by default)  
Security code is a four digit number chosen by the customer and noted on the application form.  
Tap "OK"

※ If you already have au ID, tap "au IDをお持ちの方はこちら (For au ID holders, here)"  
Tap to enter a password  
※ For customer registering new au ID except phone number, tap "好きなau IDを新規登録したい方はこちら (New registration of au ID)"

Tap "利用規約に同意して新規登録 (Agree Terms of Use and register)"

Register information necessary for re-issue of password. Enter "生年月日 (Date of birth)", "秘密の質問 (Secret question)", "答え (Answer)" and then tap "入力完了 (Done)". Tap "設定 (Set)" to complete registration. In au ID setting menu, tap "終了 (Exit)".

### 2-2 Setting backup

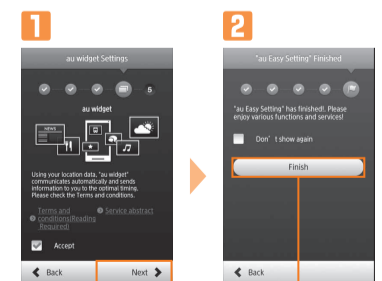


To use, confirm contents and tap "Accept"

Tap "Next"

### 2-3 au Widget

au Widget is convenient and useful widget which delivers the latest information at the perfect time.



Confirm the contents→Mark "Accept"→Tap "Next"

Tap "Finish"

## STEP 3 E-mail Initial settings

- To use E-mail (@ezweb.ne.jp), subscription to LTE NET is required. If you did not subscribe it when you purchased the product, contact an au shop or Customer Service Center.
- It takes from 30 seconds to 3 minutes for the initial setting depending on time zone. Wait for a while on the "Eメールアドレスの設定中です。しばらくお待ちください。(E-mail address setting is in progress. Please wait for a while)" screen.

**1** In the home screen, tap (E-mail)

**2** Tap "接続する (Connect)"

**3** Initial settings are complete, E-mail address screen appears.

※ Tap "閉じる (Close)" to display the E-mail top screen.

### Changing E-mail address

Although E-mail address is automatically decided by performing Initial settings, the E-mail address can be changed.

- In the home screen, (E-mail) → Tap "E-mail settings"
- Tap "Other settings" → "接続する (Connect)" → "Eメールアドレスの変更 (Change e-mail address)"
- Enter a security code and tap "送信 (Send)" → "承諾する (Accept)"  
※ Security code is a four digit number chosen by the customer and noted on the application form.
- Enter in left section of "@" of E-mail address (changeable section) and tap "送信 (Send)" → "OK"

### PC-mail

Set up the mail account that you usually use on your PC etc. on FJL21 to send and receive mails to/from the FJL21. Obtain information necessary for settings from your ISP in advance to make a mail account settings. To activate PC-mail, in the home screen, tap → (Email).

## STEP 4 Easy data transfer support

You can transfer data such as contacts etc. to FJL21 collectively with simple operation when changing model from au phone except smartphone. Save moving data to microSD card in advance.

- Some au phones may not be supported.

**1** In the home screen, tap → Tap "Settings"

**2** Tap "Initial settings"

**3** Tap "Easy data transfer support" and tap "OK"

Select data to restore and tap "Start Copy". Transferring data starts.

## STEP 5 Wireless LAN (Wi-Fi®) function setting

Use your home wireless LAN or public wireless LAN to connect internet service.

- Before setting wireless LAN (Wi-Fi®), check network name (SSID) and security key (password) you want to use.
- Operate in a place where signal of connecting access point can be received.

**1** In the home screen, tap → Tap "Settings"

**2** Tap "Wi-Fi"

**3** Tap "OFF" to set to "ON"

**4** Tap an access point you connect

If connecting access point is not detected, register the access point manually. To register manually, tap "ADD NETWORK" and enter SSID and security information.

**5** Example: When Security is "WEP"

Tap and enter a security key set in the access point

※ When FJL21 is connected to the access point, an icon appears.

Tap "Connect"

※ If you select a network without security setting, this screen does not appear.

### Easy Wi-Fi® network registration

You can connect using a wireless LAN (Wi-Fi®) access point supporting AOSS™ or WPS with simple operation.

In the home screen, tap → "Settings" → "Easy Wi-Fi registration" → Tap "AOSS system" or "WPS system" or "Easy Setting", and then operate on the access point.

## Calling

### Making a call

**1** In the home screen, tap (NX! Dial)

**2** Tap → Enter a phone number

### Receiving a call

**1** On the incoming call screen, tap "Answer"

※ When receiving a call in sleep mode or on the locked screen, drag "Answer" right.

### Ending a call

**1** On the calling screen, tap "End"

### Importing/exporting contacts

Use NX! Contact to export contacts data to microSD card (backup) or import contacts data saved in the microSD card (restore). You are recommended to export data regularly to protect important data.

**1** In the home screen, tap → Tap "NX! Contact"

**2** Tap "Import/export"

**3** To import, tap "Import from storage"

To export, "Export to storage" → Select data to export → Tap "OK"

When an account selection screen appears, select an account to import. When there are several files, select a file to import.

### Backing up e-mails

You are recommended to save backup data of e-mails of Inbox, Outbox, Unsent box to microSD card.

- In the home screen, (E-mail) → "E-mail settings" → "Backup/Restore"
- "Backup" → Mark a checkbox → Tap "OK"

- When microSD card is installed, data is saved to "/mnt/sdcard/external\_sd/private/au/email/BU" folder.
- When microSD card is not installed, data is saved to "/mnt/sdcard/private/au/email/BU" folder in internal storage.
  - To move/copy backup data in the internal storage to microSD card, in the home screen, tap → Tap "KFilemanager" to copy "/mnt/sdcard/private/au/email/BU" folder in the internal storage to anywhere in the microSD card.
  - To restore e-mail backup data, use "E-mail" application.

### Data transfer to microSD card

Data saved in the internal storage of FJL21 can be transferred to microSD card.

- Still images and videos data can be also transferred to microSD card by "Gallery" application.
- Data moved to microSD card can be restored by setting back to the original folder in the internal storage.

**1** In the home screen, tap → Tap "KFilemanager"

**2** Touch and hold a folder data saved → Tap "Copy"/"Move"

**3** Tap a folder to copy/move to

**4** Tap "Paste"

When operation is complete, tap "OK".

### Data saving folders

Data type	Folder location in internal storage
Still images and videos shot with Camera	/mnt/sdcard/DCIM/Camera (When "Switch data save destination" is set to "Terminal")
Attachment data in received E-mail (@ezweb.ne.jp) or saved images inserted in the message (including D-pictogram)	/mnt/sdcard/private/au/email/Myfolder
E-mail Inbox backup data	/mnt/sdcard/private/au/email/BU/RE
E-mail Outbox backup data	/mnt/sdcard/private/au/email/BU/SE
E-mail Unsent backup data	/mnt/sdcard/private/au/email/BU/DR (When microSD card is installed, data is saved to "/mnt/sdcard/external_sd/private/au/email/BU" automatically.)
Data saved by Browser	/mnt/sdcard/Download (When "Download file save-to destination" is set to "Built-in storage preferred")

### Infrared communication

Exchange contacts, profile, still images, etc. between au phones supporting infrared communication function.

#### Sending via Infrared

(Ex: Sending one contact)

- Operate for receiving one contact on the recipient's phone.

**1** In the home screen, tap → Tap "NX!Contact"

**2** Select a contact to send → Tap "Infrared"

When sending is complete, tap "OK"

#### Receiving via Infrared

(Ex: Receiving one contact)

- Operate for sending one contact on the sender's phone.

**1** In the home screen, tap → "Infrared" → "Import one contact"

When receiving is complete, tap "Add" → "OK"

When account selection screen appears, select an account to add to.