

ASUS MEMO Pad™ 8 AST21 Setting Guide

Thank you for purchasing the ASUS MeMO Pad™ 8 AST21 (simply called the "product" from here on). This manual explains the settings and basic operations for using the product. For explanation of other settings and operations, refer to the "Basic Manual application" that can be used on your product or "Basic Manual" on the au homepage.

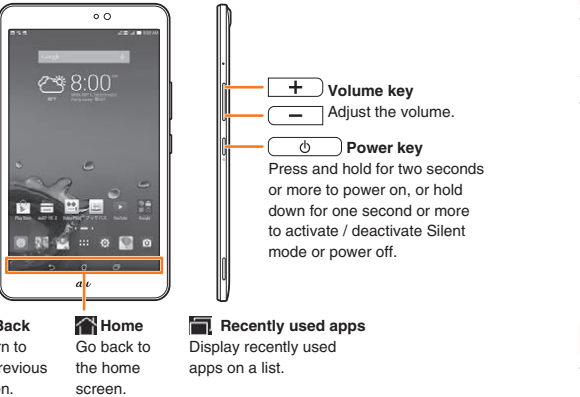
- **Basic operations**
Explains the basic operations.
- **STEP 1 au Easy Setting**
Explains au ID settings, etc.
- **STEP 2 Setup Wizard**
Explains how to set up network connection, Google account, ASUS account and date and time, etc.
- **E-mail initial settings**
Make initial settings for E-mail (@ezweb.ne.jp).
- **Backing up E-mails**
Back up E-mail data to a microSD card.
- **Importing / exporting contacts**
Restore / backup contacts data.
- **Transferring data to a microSD card**
Back up data to a microSD card.
- **Saving battery power**
Turning off functions not in use can save battery power.

※ Company names and product names referred to in this manual are trademarks or registered trademarks of respective companies. The ® or ™ marks may be omitted in this manual.
 ※ In this manual, "microSD™ memory card (commercially available)", "microSDHC™ memory card (commercially available)" and "microSDXC™ memory card (commercially available)" are abbreviated as "microSD card".
 ※ This manual uses the abbreviation 'app' in place of "application".

August 2014, 1st Edition
 Sold by: KDDI CORPORATION, OKINAWA CELLULAR TELEPHONE COMPANY
 Imported by: ASUS JAPAN Inc.
 Manufactured by: ASUSTeK Computer Inc.

Basic operations

Using keys



Lock screen operation

Lock screen prevents erroneous operation. It appears when turning the power on, etc. Pressing during operation activates sleep mode whereas pressing while in sleep mode displays the lock screen. Slide (swipe) the lock screen in any direction to unlock the screen.

Using the display (touch panel)

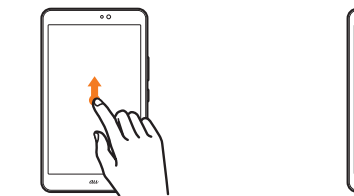
Tap / Double Tap

Tap: Gently touch a screen and then immediately release your finger. **Double tap:** Touch the same position twice.



Drag

Touch and hold an item or icon, move it to the desired location.



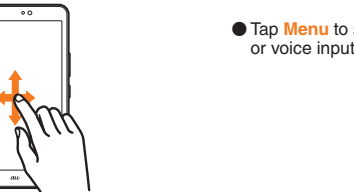
Long Touch

Touch and hold an item with your finger. Used for displaying pop-up menus, etc.



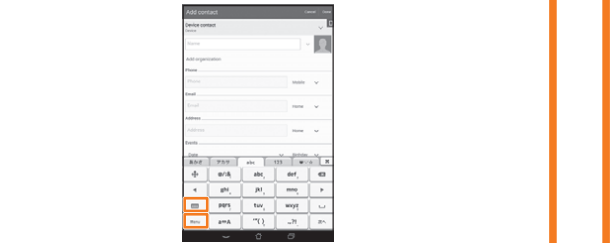
Slide (swipe)

Lightly touch and move it in the desired direction. Used for unlocking the screen or scrolling to view the items that do not fit on the screen.



Switching the input method

On the character input screen, operate as follows to switch between input methods:



Tap or to switch between input methods

10 key keyboard

Keyboard with keys arranged in the same order as those on cell phones.

QWERTY keyboard

Keyboard with keys arranged in the same order as those on computers.

- Tap **Menu** to select the hand writing input, Japanese syllabic keyboard, or voice input mode.

STEP 1 au Easy Setting

When you power on this product for the first time after purchase, **auへようこそ** (Welcome to au) screen appears. Follow the on-screen instruction to make each setting.

1-1 au ID Registration

By setting an au ID, you can use various services provided by au such as "au かんたん決済" (au Simple Payment Service) which allows you to purchase apps from the au Market or Google Play.

- An au ID that is already used by another user cannot be registered.
- When an au ID is newly created, your own phone number* will be registered as au ID. You can change your au ID to something you like.
 ※ Your au Micro IC Card (LTE) contains your phone number as customer information.
- If your au ID was registered on another device, it can still be used on this product (integrated au ID).

1-2 Update

Update pre-installed apps to the latest versions.
アップデートする (Update) → **次へ** (Next)

1-5 Recommended apps

You can download and install recommended apps. Tick the app you want to install → **次へ** (Next)



- Confirm the content → **次へ** (Next)
- au IDを設定する** (Register "au ID") → **次へ** (Next)
- Tap **au IDの設定・保存** (Set / Save au ID)
- Enter your security code (security password) → **OK**
 ※ Security code is a four digit number chosen by the customer and noted on the application form.
- Enter a password → **確認** of Use → **設定** (Set)
- Tap **終了** (Finish)
 ※ When setting the information necessary to reissue a password, tap **au ID設定メニューへ** (Go to au ID settings menu).

1-3 Terms of Use of au Services

- Confirm the Terms of Use and the outline of each service.
- Confirm the Terms of Use and the outline of the service → **同意する** (Agree) → **次へ** (Next) → **同意する** (Agree)
- ※ The **データの復元** (Restoration of backups) screen appears if you have any data to restore. Follow the on-screen instruction to restore data.

1-6 Completion of registration

- ※ Tick the **次回電源ON時にauかんたん設定を自動起動しない** (Do not launch "au Easy Setting" automatically at power on) checkbox not to show this screen next time.
- Tap **終了する** (Finish) to complete registration

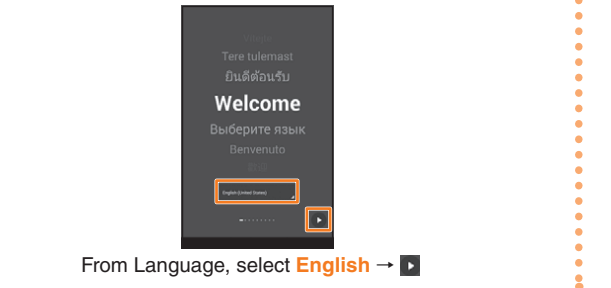
1-4 Automatic backup settings

- Set an automatic backup of your address book, photos and videos.
- Tick the data to be backed up automatically → **次へ** (Next)
- ※ The **アプリの復元** (Restoration of apps) screen appears if you have any app to restore. Follow the on-screen instruction to restore data.

STEP 2 Setup Wizard

After au Easy Setting is complete, Setup Wizard screen appears.

2-1 Setting the language

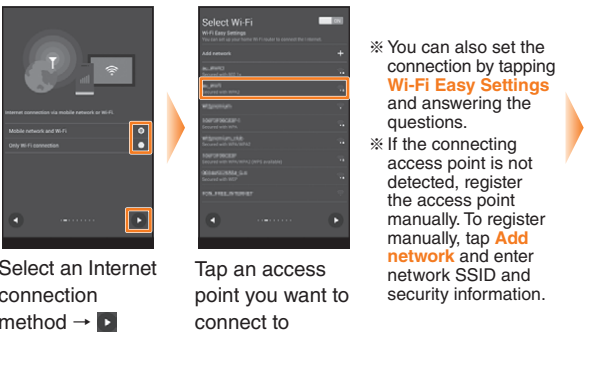


2-3 Setting up a Google account

- If you have created Google account on another device, it can still be used on this product.
- When you create Google account on this product, Gmail mail address "(user name)@gmail.com" will be created and set as main E-mail address in Google account.
- A recovery E-mail address is an alternate E-mail address used by Google to communicate with you in case you forgot your password, etc. If you have no another mail address, leave it blank.



2-2 Setting Internet connection



Continued to the next page

STEP 2 Setup Wizard (continued)



Enter your desired E-mail address (part before @ mark) →

2-5 Setting accounts and synchronization

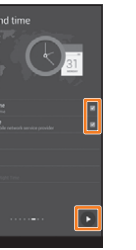


When you set an automatic synchronization of data, tick the checkbox → Make settings of the accounts with which to synchronize data as required →



Enter a password → Re-enter the password →

2-6 Setting date and time



Confirm that **Automatic date & time** and **Automatic time zone** checkboxes are ticked →
 ※ When you manually set them, untick the checkboxes and tap respective settings to make the settings.

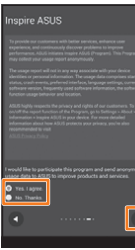


Tap **Set up recovery options**

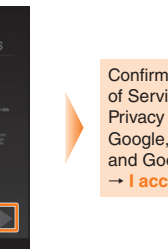


Enter a recovery E-mail address →

2-7 Setting Inspire ASUS



Confirm the content and select whether or not to allow usage data to be collected →



Confirm the content and tick the services you want to use →

Confirm the Terms of Service and Privacy Policy of Google, Chrome and Google Play → **I accept**

Creating Google account starts. Follow the on-screen instruction to complete the setting.

2-4 Setting up an ASUS account



Tap **Create New** and follow the on-screen instructions to set the account

※ If you already have an ASUS account, tap **Sign in** and follow the on-screen instructions.

※ Enter your E-mail address for account name.



Tap to complete the setup

2-8 Completing setup

E-mail initial settings

- To use E-mail (@ezweb.ne.jp), application to LTE NET is required. If you did not apply to it when you purchased the product, contact an au shop or Customer Service Center.
- It takes from 30 seconds to 3 minutes for the initial setting depending on time of day. Wait for a while on the "Eメールアドレスの設定中です。しばらくお待ちください。" (E-mail address setting is in progress. Please wait for a while.) screen.



On the home screen, tap (E-mail)



Confirm the content → **接続する** (Connect)



Initial settings are complete, and your E-mail address is displayed.
 ※ Tap **閉じる** (Close) to display the Thread list screen.

Changing your E-mail address

Your E-mail address is determined automatically after the initial settings, but the E-mail address can be changed later.

- On the home screen, (E-mail) → **E-mail settings**
- Other settings** → Confirm the content → **接続する** (Connect) → **Eメールアドレスの変更へ** (To change E-mail address)
- Enter a security code → **送信** (Send) → Confirm the content → **承諾する** (Accept)
- Enter the part before the @ mark of your E-mail address (changeable part) → **送信** (Send) → **OK**

PC-mail

Set up the mail account that you usually use on your PC, etc. on this product to exchange mails with the product. Obtain information necessary for the settings from your service provider in advance to make a mail account setting.
 To activate PC-mail, on the home screen, tap **Email**.

Backing up E-mails

We recommend backing up Inbox mails, Outbox mails and Unsent mails of E-mail to a microSD card on a regular basis.
 ● Insert a microSD card to the product in advance.

On the home screen, (E-mail) → **E-mail settings** → **Backup/Restore** → **Mail Backup** → **OK** → Select a character code → **OK** → Tick E-mail types to back up → **OK**

Importing / exporting contacts

Use Contacts to export contacts data to a microSD card (backup) or import contacts data saved in a microSD card (restore). We recommend you to export data regularly to protect important data.
 ● Insert a microSD card to the product in advance.

- On the home screen, (E-mail) → **E-mail settings**
- Other settings** → Confirm the content → **接続する** (Connect) → **Eメールアドレスの変更へ** (To change E-mail address)
- Enter a security code → **送信** (Send) → Confirm the content → **承諾する** (Accept)
- Enter the part before the @ mark of your E-mail address (changeable part) → **送信** (Send) → **OK**

PC-mail

Set up the mail account that you usually use on your PC, etc. on this product to exchange mails with the product. Obtain information necessary for the settings from your service provider in advance to make a mail account setting.
 To activate PC-mail, on the home screen, tap **Email**.

Backing up E-mails

We recommend backing up Inbox mails, Outbox mails and Unsent mails of E-mail to a microSD card on a regular basis.
 ● Insert a microSD card to the product in advance.

On the home screen, (E-mail) → **E-mail settings** → **Backup/Restore** → **Mail Backup** → **OK** → Select a character code → **OK** → Tick E-mail types to back up → **OK**

Transferring data to a microSD card

Data saved in the internal storage of the product can be transferred to a microSD card.
 ● Still images and videos can also be transferred to a microSD card by "Gallery" app.
 ● Data moved to a microSD card can be restored by setting back to the original folder in the internal storage.
 ※ A microSD card is not supplied with the product. Please prepare a microSD card (commercially available) as required.

- ### Storage folders of main data
- Main data are stored to the following folders in the internal storage:
- Still images and videos shot with the camera (when **Save to** is set to **Internal storage**)
 /sdcard/DCIM/Camera
 - Attached data in received E-mail (@ezweb.ne.jp) or saved images inserted in the text of messages (including D-emoji).
 /sdcard/private/au/email/MyFolder
 (When a microSD card is inserted, the data is automatically stored to "/Removable/MicroSD/private/au/email/MyFolder" folder)
 - Backup data of E-mail messages
 Inbox mails: /sdcard/private/au/email/BU/RE
 Outbox mails: /sdcard/private/au/email/BU/SE
 Unsent mails: /sdcard/private/au/email/BU/DR
 (When a microSD card is inserted, the data is automatically stored to "/Removable/MicroSD/private/au/email/BU" folder)
 - Data saved by browsers
 /sdcard/Download

On the home screen, **File Manager** → **Internal storage** → Tick a folder or data file to transfer → **(Copy) / (Cut)**

On the home screen, **SD card** → **SD card** → Select a folder to which to copy / move → **(Paste)**

On the home screen, **Contacts** → **Manage contacts** → Tap **Import/export**

To import, tap **Import from SD card**
 ※ When an account selection screen appears, select an account to which to import contact data. When there are several files, select a file to import.
 To export, **Export to SD card** → Select data to export → **OK**

Saving battery power

When you want to use the product continuously for a longer period of time, you can reduce battery power consumption by turning off the functions not in use or by using Smart saving.

Switching on / off functions

Slide the status icon display area on the status bar at the top of the screen downward to display the Quick settings panel and then tap the switch of the function.

On the home screen, **File Manager** → **Internal storage** → Tick a folder or data file to transfer → **(Copy) / (Cut)**

On the home screen, **SD card** → **SD card** → Select a folder to which to copy / move → **(Paste)**

On the home screen, **Contacts** → **Manage contacts** → Tap **Import/export**

To import, tap **Import from SD card**
 ※ When an account selection screen appears, select an account to which to import contact data. When there are several files, select a file to import.
 To export, **Export to SD card** → Select data to export → **OK**

On the home screen, **File Manager** → **Internal storage** → Tick a folder or data file to transfer → **(Copy) / (Cut)**

On the home screen, **SD card** → **SD card** → Select a folder to which to copy / move → **(Paste)**

On the home screen, **Contacts** → **Manage contacts** → Tap **Import/export**

To import, tap **Import from SD card**
 ※ When an account selection screen appears, select an account to which to import contact data. When there are several files, select a file to import.
 To export, **Export to SD card** → Select data to export → **OK**

Storage folders of main data

- Main data are stored to the following folders in the internal storage:
- Still images and videos shot with the camera (when **Save to** is set to **Internal storage**)
 /sdcard/DCIM/Camera
 - Attached data in received E-mail (@ezweb.ne.jp) or saved images inserted in the text of messages (including D-emoji).
 /sdcard/private/au/email/MyFolder
 (When a microSD card is inserted, the data is automatically stored to "/Removable/MicroSD/private/au/email/MyFolder" folder)
 - Backup data of E-mail messages
 Inbox mails: /sdcard/private/au/email/BU/RE
 Outbox mails: /sdcard/private/au/email/BU/SE
 Unsent mails: /sdcard/private/au/email/BU/DR
 (When a microSD card is inserted, the data is automatically stored to "/Removable/MicroSD/private/au/email/BU" folder)
 - Data saved by browsers
 /sdcard/Download

On the home screen, **File Manager** → **Internal storage** → Tick a folder or data file to transfer → **(Copy) / (Cut)**

On the home screen, **SD card** → **SD card** → Select a folder to which to copy / move → **(Paste)**

Saving battery power

When you want to use the product continuously for a longer period of time, you can reduce battery power consumption by turning off the functions not in use or by using Smart saving.

Switching on / off functions

Slide the status icon display area on the status bar at the top of the screen downward to display the Quick settings panel and then tap the switch of the function.

On the home screen, **File Manager** → **Internal storage** → Tick a folder or data file to transfer → **(Copy) / (Cut)**

On the home screen, **SD card** → **SD card** → Select a folder to which to copy / move → **(Paste)**

On the home screen, **Contacts** → **Manage contacts** → Tap **Import/export**

To import, tap **Import from SD card**
 ※ When an account selection screen appears, select an account to which to import contact data. When there are several files, select a file to import.
 To export, **Export to SD card** → Select data to export → **OK**

On the home screen, **File Manager** → **Internal storage** → Tick a folder or data file to transfer → **(Copy) / (Cut)**

On the home screen, **SD card** → **SD card** → Select a folder to which to copy / move → **(Paste)**

On the home screen, **Contacts** → **Manage contacts** → Tap **Import/export**

To import, tap **Import from SD card**
 ※ When an account selection screen appears, select an account to which to import contact data. When there are several files, select a file to import.
 To export, **Export to SD card** → Select data to export → **OK**

Storage folders of main data

- Main data are stored to the following folders in the internal storage:
- Still images and videos shot with the camera (when **Save to** is set to **Internal storage**)
 /sdcard/DCIM/Camera
 - Attached data in received E-mail (@ezweb.ne.jp) or saved images inserted in the text of messages (including D-emoji).
 /sdcard/private/au/email/MyFolder
 (When a microSD card is inserted, the data is automatically stored to "/Removable/MicroSD/private/au/email/MyFolder" folder)
 - Backup data of E-mail messages
 Inbox mails: /sdcard/private/au/email/BU/RE
 Outbox mails: /sdcard/private/au/email/BU/SE
 Unsent mails: /sdcard/private/au/email/BU/DR
 (When a microSD card is inserted, the data is automatically stored to "/Removable/MicroSD/private/au/email/BU" folder)
 - Data saved by browsers
 /sdcard/Download

On the home screen, **File Manager** → **Internal storage** → Tick a folder or data file to transfer → **(Copy) / (Cut)**

On the home screen, **SD card** → **SD card** → Select a folder to which to copy / move → **(Paste)**

Saving battery power

When you want to use the product continuously for a longer period of time, you can reduce battery power consumption by turning off the functions not in use or by using Smart saving.

Switching on / off functions

Slide the status icon display area on the status bar at the top of the screen downward to display the Quick settings panel and then tap the switch of the function.

On the home screen, **File Manager** → **Internal storage** → Tick a folder or data file to transfer → **(Copy) / (Cut)**

On the home screen, **SD card** → **SD card** → Select a folder to which to copy / move → **(Paste)**

On the home screen, **Contacts** → **Manage contacts** → Tap **Import/export**

To import, tap **Import from SD card**
 ※ When an account selection screen appears, select an account to which to import contact data. When there are several files, select a file to import.
 To export, **Export to SD card** → Select data to export → **OK**

On the home screen, **File Manager** → **Internal storage** → Tick a folder or data file to transfer → **(Copy) / (Cut)**

On the home screen, **SD card** → **SD card** → Select a folder to which to copy / move → **(Paste)**

On the home screen, **Contacts** → **Manage contacts** → Tap **Import/export**

To import, tap **Import from SD card**
 ※ When an account selection screen appears, select an account to which to import contact data. When there are several files, select a file to import.
 To export, **Export to SD card** → Select data to export → **OK**

Storage folders of main data

- Main data are stored to the following folders in the internal storage:
- Still images and videos shot with the camera (when **Save to** is set to **Internal storage**)
 /sdcard/DCIM/Camera
 - Attached data in received E-mail (@ezweb.ne.jp) or saved images inserted in the text of messages (including D-emoji).
 /sdcard/private/au/email/MyFolder
 (When a microSD card is inserted, the data is automatically stored to "/Removable/MicroSD/private/au/email/MyFolder" folder)
 - Backup data of E-mail messages
 Inbox mails: /sdcard/private/au/email/BU/RE
 Outbox mails: /sdcard/private/au/email/BU/SE
 Unsent mails: /sdcard/private/au/email/BU/DR
 (When a microSD card is inserted, the data is automatically stored to "/Removable/MicroSD/private/au/email/BU" folder)
 - Data saved by browsers
 /sdcard/Download

On the home screen, **File Manager** → **Internal storage** → Tick a folder or data file to transfer → **(Copy) / (Cut)**

On the home screen, **SD card** → **SD card** → Select a folder to which to copy / move → **(Paste)**

Saving battery power

When you want to use the product continuously for a longer period of time, you can reduce battery power consumption by turning off the functions not in use or by using Smart saving.

Switching on / off functions

Slide the status icon display area on the status bar at the top of the screen downward to display the Quick settings panel and then tap the switch of the function.

On the home screen, **File Manager** → **Internal storage** → Tick a folder or data file to transfer → **(Copy) / (Cut)**

On the home screen, **SD card** → **SD card** → Select a folder to which to copy / move → **(Paste)**

On the home screen, **Contacts** → **Manage contacts** → Tap **Import/export**

To import, tap **Import from SD card**
 ※ When an account selection screen appears, select an account to which to import contact data. When there are several files, select a file to import.
 To export, **Export to SD card** → Select data to export → **OK**

On the home screen, **File Manager** → **Internal storage** → Tick a folder or data file to transfer → **(Copy) / (Cut)**

On the home screen, **SD card** → **SD card** → Select a folder to which to copy / move → **(Paste)**

On the home screen, **Contacts** → **Manage contacts** → Tap **Import/export**

To import, tap **Import from SD card**
 ※ When an account selection screen appears, select an account to which to import contact data. When there are several files, select a file to import.
 To export, **Export to SD card** → Select data to export → **OK**

Storage folders of main data

- Main data are stored to the following folders in the internal storage:
- Still images and videos shot with the camera (when **Save to** is set to **Internal storage**)
 /sdcard/DCIM/Camera
 - Attached data in received E-mail (@ezweb.ne.jp) or saved images inserted in the text of messages (including D-emoji).
 /sdcard/private/au/email/MyFolder
 (When a microSD card is inserted, the data is automatically stored to "/Removable/MicroSD/private/au/email/MyFolder" folder)
 - Backup data of E-mail messages
 Inbox mails: /sdcard/private/au/email/BU/RE
 Outbox mails: /sdcard/private/au/email/BU/SE
 Unsent mails: /sdcard/private/au/email/BU/DR
 (When a microSD card is inserted, the data is automatically stored to "/Removable/MicroSD/private/au/email/BU" folder)
 - Data saved by browsers
 /sdcard/Download

On the home screen, **File Manager** → **Internal storage** → Tick a folder or data file to transfer → **(Copy) / (Cut)**

On the home screen, **SD card** → **SD card** → Select a folder to which to copy / move → **(Paste)**

Saving battery power

When you want to use the product continuously for a longer period of time, you can reduce battery power consumption by turning off the functions not in use or by using Smart saving.

Switching on / off functions

Slide the status icon display area on the status bar at the top of the screen downward to display the Quick settings panel and then tap the switch of the function.

On the home screen, **File Manager** → **Internal storage** → Tick a folder or data file to transfer → **(Copy) / (Cut)**

On the home screen, **SD card** → **SD card** → Select a folder to which to copy / move → **(Paste)**

On the home screen, **Contacts** → **Manage contacts** → Tap **Import/export**

To import, tap **Import from SD card**
 ※ When an account selection screen appears, select an account to which to import contact data. When there are several files, select a file to import.
 To export, **Export to SD card** → Select data to export → **OK**

On the home screen, **File Manager** → **Internal storage** → Tick a folder or data file to transfer → **(Copy) / (Cut)**

On the home screen, **SD card** → **SD card** → Select a folder to which to copy / move → **(Paste)**

On the home screen, **Contacts** → **Manage contacts** → Tap **Import/export**

To import, tap **Import from SD card**
 ※ When an account selection screen appears, select an account to which to import contact data. When there are several files, select a file to import.
 To export, **Export to SD card** → Select data to export → **OK**