

XPERIA 1

SOV40

Setting Guide

Thank you for buying "Xperia 1" (simply called "the product" or "main unit" from here on).

In this guide, settings and precautions for using the product are described.

Online Manual (Japanese)

Check "Online Manual" (Japanese) which describes detail explanations of various functions on the product from the following procedure.



- Also, you can check "Online Manual" (Japanese) on the au homepage. <https://www.au.com/online-manual/sov40/> (Japanese)

Company names and product names referred to in this manual are trademarks or registered trademarks of respective companies.

The TM, ® marks may be omitted in this manual.

Screen illustrations shown in this manual may look different from the actual screens.

In some cases, minor details or a part of a screen may be omitted.

In this manual, the contents on Android 9 are provided.

For the latest version, refer to the 設定ガイド (Setting guide) (Japanese) au homepage. <https://www.au.com/support/service/mobile/guide/manual/> (Japanese)

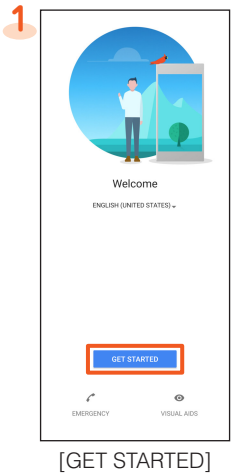
June 2019, 1st Edition
Sold by: KDDI CORPORATION, OKINAWA
CELLULAR TELEPHONE COMPANY
Manufactured by: Sony Mobile Communications Inc.

1319-5339.1

Initial settings

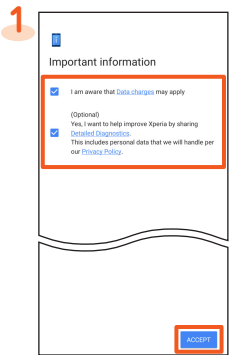
When "ようこそ (Welcome)" appears after the product is powered on, follow the onscreen instructions to set functions and services.

STEP 1: Start of setting



- To change the language, tap "日本語 (Japanese)" to open the language list, select "English"→"United States".
- When you tap "VISUAL AIDS", the setting of accessibility functions can be made.
- You can also set the language after the initial settings. In the Home screen, slide the screen up→[設定 (Settings)]→[システム (System)]→[言語と入力 (Languages & input)]→[言語 (Languages)]→[言語を追加 (Add a language)] and select "English"→"United States", and then drag ≡ of "English (United States)" up to the top in the language list.
- You can also set the accessibility functions after the initial settings. In the Home screen, slide the screen up→[Settings]→[Accessibility].

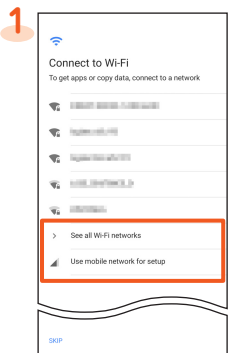
STEP 2: Setting/Checking the important information



Confirm contents/setting^{*1}
→[ACCEPT]

- *1 Tap "Data charges", "Detailed Diagnostics", and "Privacy Policy" to confirm the contents.
- To alternatively confirm "Detailed Diagnostics" and "Privacy Policy", after the initial setting, in the Home screen, slide the screen up→[Settings]→[System]→[About phone]→[Detailed Diagnostics].

STEP 3: Setting up the network connection



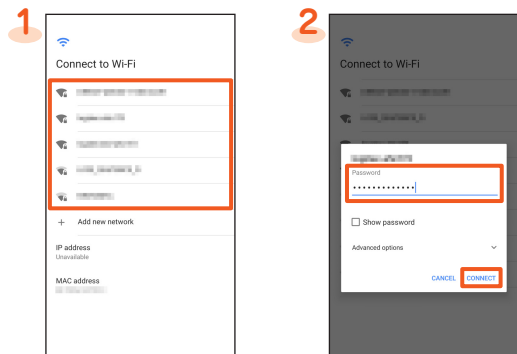
Select a network connection method

- When you select "Use mobile network for setup", tap "CONTINUE" to proceed to "STEP 5".
- To make settings requiring network connection such as Google account etc. later, [SKIP]→[CONTINUE], then follow the onscreen instructions.

STEP 4: Setting wireless LAN (Wi-Fi®) connection

You can use a home wireless LAN (Wi-Fi®) or public wireless LAN to access the Internet services. Set it in a place where the signal of Wi-Fi® network can be received.

- Wi-Fi® network with is an open network.
- Wi-Fi® network with is a secured network. To connect it, enter a password (security key).



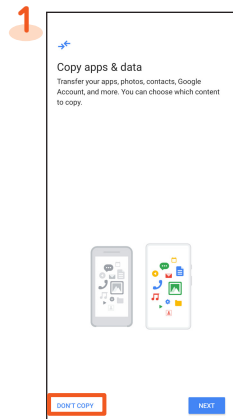
Select a Wi-Fi® network

Enter a password (security key)^{*1}→[CONNECT]

- *1 When you select a Wi-Fi® open network, a password entry screen does not appear.

- To add a Wi-Fi® network manually, in step 1, tap "Add new network" and enter a network name (SSID) etc.→[SAVE]. Check the necessary information for the connection in advance.
- To make advanced setting of Wi-Fi®, after the initial setting, in the Home screen, slide the screen up→[Settings]→[Network & internet]→[Wi-Fi]→[Wi-Fi preferences].

STEP 5: Copy apps & data



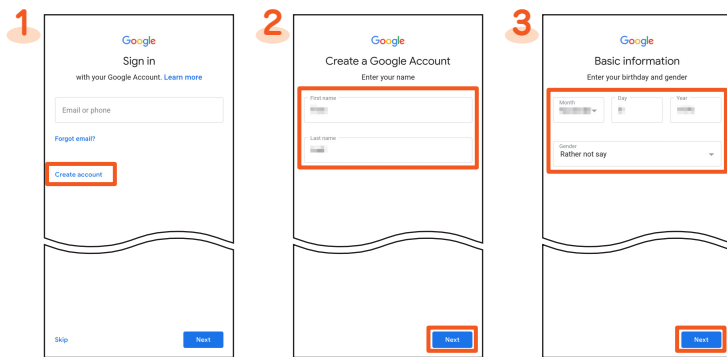
[DON'T COPY]

- To use the data of the other Android phone etc. successively, tap "NEXT" and follow the onscreen instruction.

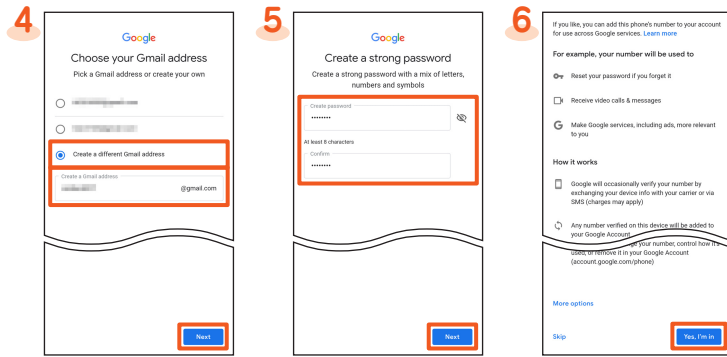
STEP 6: Setting up a Google account

Set up a Google account to synchronize with Gmail, contacts of online service, calendar, etc. Setting for creating a new Google account is explained here.

- If you set up a Google account, you can use Google apps such as "Gmail" or "Google Play".
- Although you can use the product without setting of a Google account, some apps using it cannot be used. When you activate the app, the setup screen for a Google account appears.

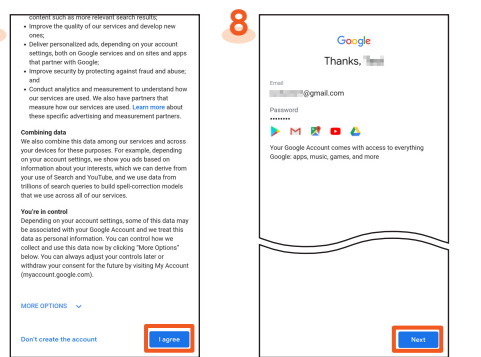


- [Create account]^{*1,2}
- Enter "First name", "Last name"→[Next]³
- Enter your birthday and gender→[Next]



- [Create a different Gmail address]^{*4}→Enter your Gmail address→[Next]
- Enter a password→[Next]
- [Yes, I'm in]^{*5}

- *4 You can also select a Gmail address you have prepared.
- *5 To change the method of adding a phone number, tap "More options" and follow the onscreen instruction.

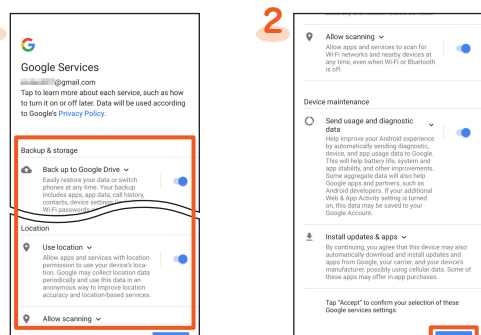


Confirm the Privacy Policy, Terms of Service, etc.→[I agree]

[Next]

STEP 7: Setting Google services

Set the Google services such as backup.



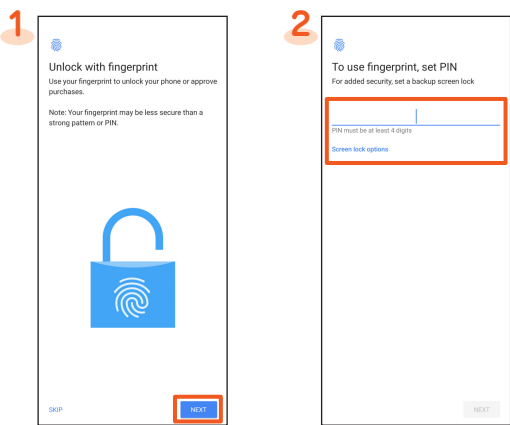
Confirm/change each setting

[ACCEPT]

- Alternatively, after the initial settings, in the Home screen, slide the screen up→[Settings]→[System]→[Advanced]→[Backup].

STEP 8: Setting the unlock method of using fingerprint

Set whether to use the fingerprint authentication function. Before registering a fingerprint, set the screen lock unlock method.



[NEXT]^{*1}

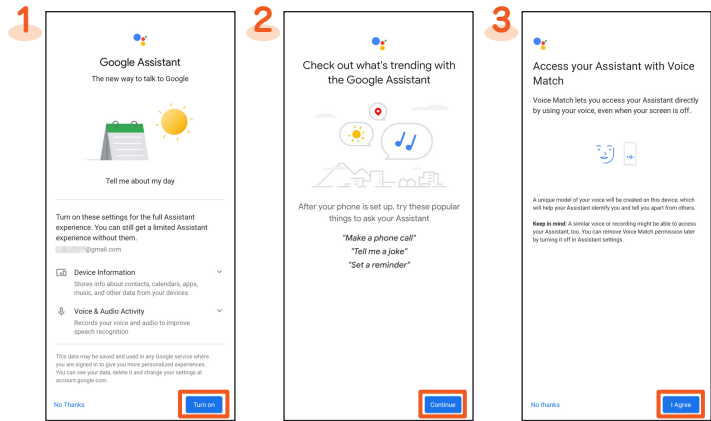
Follow the onscreen instructions^{*2}

- *1 To not register your fingerprint, tap "SKIP". To not set screen lock, tap "SKIP" again.
- *2 To change screen lock unlock method, tap "Screen lock options"

- Alternatively, after the initial settings, operate in the Home screen, slide the screen up→[Settings]→[Lock screen & security]→[Fingerprint Manager]/[Screen lock] to set.

STEP 9: Setting up Google Assistant

Set the permission for Google Assistant etc.



[Turn on]^{*1}

[Continue]

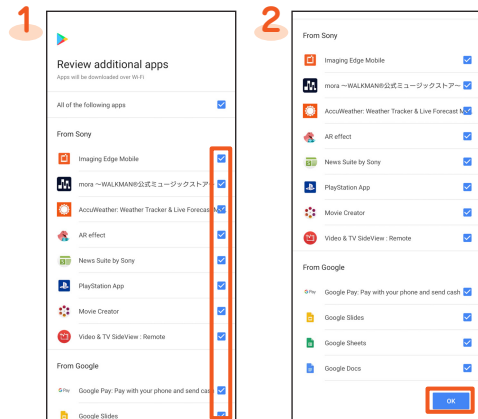
[I Agree]→Follow the onscreen instruction

- *1 To not set, tap "No Thanks".
- If Google account is not set, the setting of Google Assistant is not displayed.

STEP 10: Setting up Google Pay

A setup screen for Google Pay appears. To set payment information, tap "Add a card", and follow the onscreen instructions. To not set information, tap "Skip".

STEP 11: Setting up additional apps



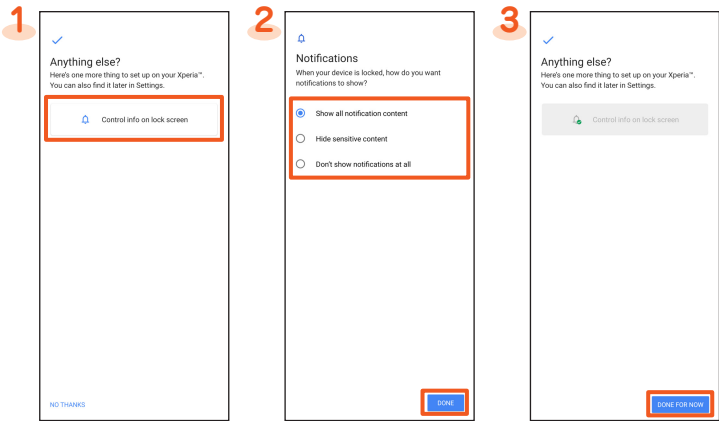
Unmark apps not to add^{*1}

[OK]

- *1 Tap an item to open an app introduction.

STEP 12: Setting up more things

Set notification of lock screen.



[Control info on lock screen]^{*1}

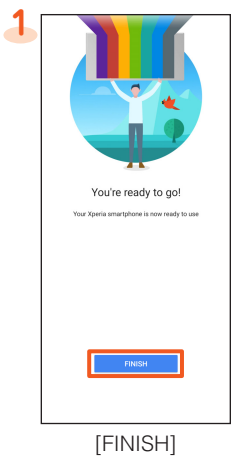
Select the notification method→[DONE]

[DONE FOR NOW]

^{*1} To end without setting, tap "NO THANKS".

- The screen for setting more things does not appear if you do not set the fingerprint authentication or screen lock unlock method.

STEP 13: Completion of setup



[FINISH]

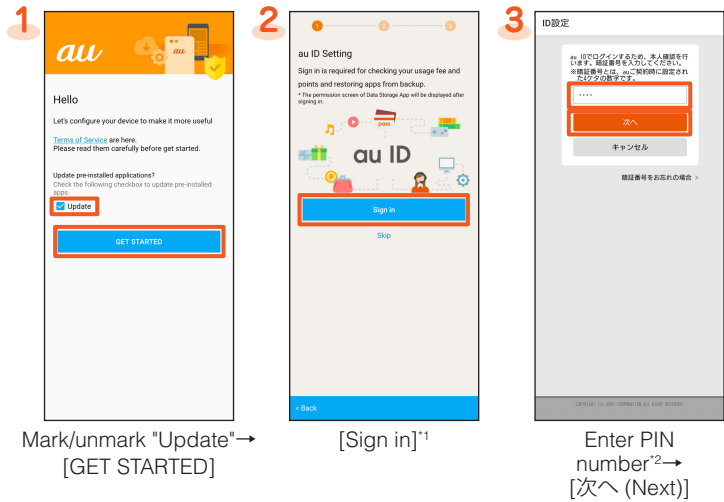
- Downloading of the applications selected in "STEP 11" starts when the product is connected to Wi-Fi®. When connected to the mobile network, downloading is in standby mode and will resume when you connect to Wi-Fi® after the au initial settings.

To download via mobile network, after the au initial settings, slide the status bar down→Open the notification of updates of apps, etc. →[USE DATA].

au initial settings

Update preinstalled apps, setting au ID, download previously used apps, or make settings for using the product more convenient.

- By setting au ID, you can use various services provided by au such as auスマートパス (au Smart Pass) or "au Kantan Kessai", which allows you to purchase apps from Google Play.
- Alternatively, after the initial setting, in the Home screen, slide the screen up→[Settings]→[au Settings]→[au Settings Menu]→[au Initial Setting].



Mark/unmark "Update"→[GET STARTED]

[Sign in]^{*1}

Enter PIN number^{*2}→[次へ (Next)]

- ^{*1} If you have already been registered au ID, step 3 and 4 do not appear. Proceed to step 5.
- ^{*2} PIN number is a four digit number chosen by the customer and noted on the application form.



Enter a password→[同意して次へ (Agree and proceed)]

[次へ (Next)]

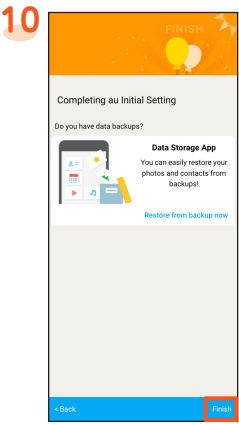
[OK]

[ALLOW]^{*3}

Mark apps to install^{*4}→[Next]

Mark items to set→[Next]

- ^{*3} The confirmation screen for app permission appears several times. Operate in the same way.
- ^{*4} When "Select apps" appears in "Backed up", tap it to check the apps.



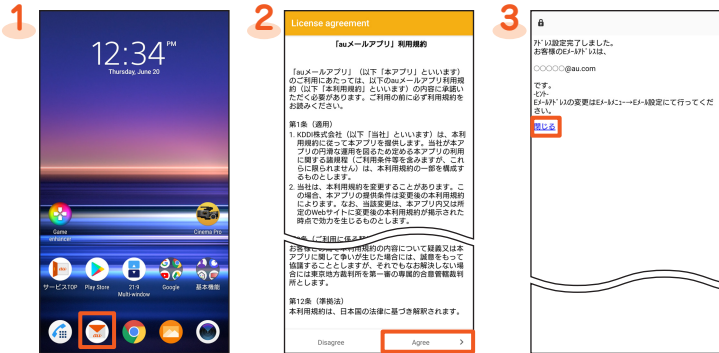
[Finish]^{*5}

- ^{*5} If there is any data backed up by "Data Storage App", you can restore them. Tap "Restore from backup now" and follow the onscreen instructions.

au-mail setting

- To use au-mail, subscription to LTE NET is required. If you did not subscribe it when you purchased the product, contact an au shop or Customer Service Center.
- Perform the initial settings in a place with good signal condition in Japan. If you perform in a place with bad signal condition or while moving, the settings may fail. The initial setting cannot be made via Wi-Fi® communication.
- Depending on time zone, the initial settings may take from 30 seconds to 3 minutes. Wait for a while with "Eメールアドレスの設定中です。しばらくお待ちください。" (Setting email address. Wait for a while.)* displayed on the screen.

Making the initial settings



From the Home screen, [Eメール]

Confirm the content→[Agree]→Confirm the content→[Agree]→Follow the onscreen instruction to proceed

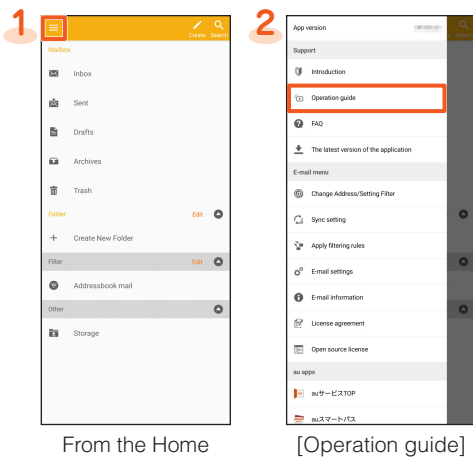
Checking au-mail address→[閉じる (Close)]

Checking your au-mail address

- From the Home screen, [Eメール]→[E-mail information]

- ^{*} For change of model, the au-mail address which you have been used so far is displayed.

Checking the operations of au-mail app



From the Home screen, [Eメール]→[Eメール]

[Operation guide]

Changing your au-mail address

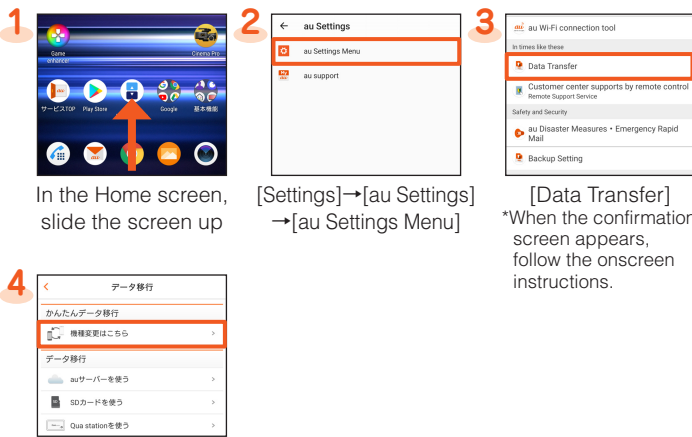
- From the Home screen, [Eメール]→[Eメール]→[Change Address/Setting Filter]
- [メールアドレスの変更へ (To change Mail address)]→Enter the security code→[送信 (Send)]
- Confirm the content→[承諾する (I agree)]→Mark "ご希望のメールアドレスに変更する (Change to your desired mail address)" and enter a mail address of your choice→[送信 (Send)]→[OK]

- ^{*} When the confirmation screen appears, follow the onscreen instructions.
- ^{*} The operations or the screen displays are subject to change without notice.

Transferring data from au Settings Menu

Import or export data between the product and your previous au mobile phone by using microSD memory card or via the au server.

- To import data via the au server, save data to the au server from your previous au mobile phone in advance. To use the au server, set au ID (If there is no au Settings Menu on your previous au mobile phone, use "au Cloud" app).
- To import data by using a microSD memory card, save the data to a microSD memory card from your previous au mobile phone in advance (If there is no au Settings Menu on your previous au mobile phone, use "au backup" app).



In the Home screen, slide the screen up

[Settings]→[au Settings]→[au Settings Menu]

[Data Transfer]
*When the confirmation screen appears, follow the onscreen instructions.

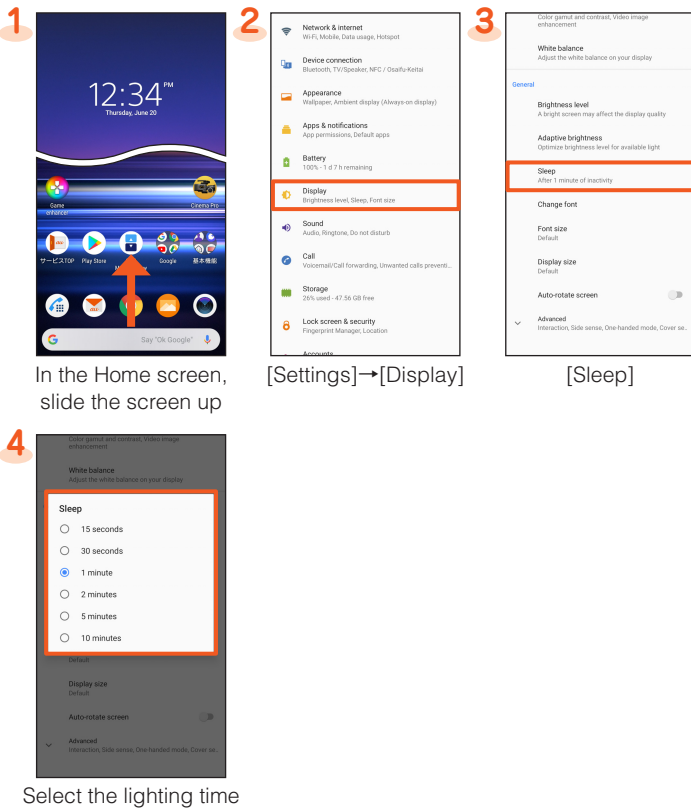
[機種変更はこちら (For change of model, tap here)]

*After that, follow the onscreen instructions.

- To back up photos and contacts to the au server automatically using "Data storage App", operate as follows. In the Home screen, slide the screen up→[Settings]→[au Settings]→[au Settings Menu]→[Backup Setting]→Mark items to back up automatically

Setting the lighting time of screen

The screen turns off automatically when the set time has elapsed while no operation is made. When you cannot operate readily because the screen turns off soon, change the lighting time.



In the Home screen, slide the screen up

[Settings]→[Display]

[Sleep]

Select the lighting time

Diagnosing on a regular basis

You are recommended to use クイック診断 (Quick diagnosis) for comfortable use of the product.



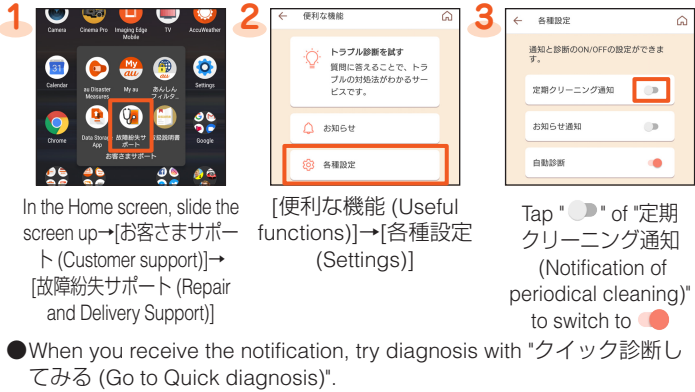
In the Home screen, slide the screen up

[お客さまサポート (Customer support)]→[故障紛失サポート (Repair and Delivery Support)]
*When the confirmation screen appears, read the content and follow the onscreen instructions.

[クイック診断を試みる (Go to Quick diagnosis)]
*After that, follow the onscreen instructions.

Setting notification for periodical cleaning

Set "定期クリーニング通知 (Notification of periodical cleaning)" to notify you of timing to diagnose periodically.



In the Home screen, slide the screen up→[お客さまサポート (Customer support)]→[故障紛失サポート (Repair and Delivery Support)]

[便利な機能 (Useful functions)]→[各種設定 (Settings)]

Tap "定期クリーニング通知 (Notification of periodical cleaning)" to switch to クイック診断 (Quick diagnosis).

- When you receive the notification, try diagnosis with "クイック診断してみる (Go to Quick diagnosis)".