

au

Thank you for buying "Xperia XZ2" (simply called "the product" or "main unit" from here on).
Before using the product, read "Basic Manual" (this manual) and "Setting Guide" for proper handling.

XPERIA XZ2 SOV37

Basic Manual

■ **Online Manual (Japanese)**
Check "Online Manual" (Japanese) which describes detail explanations on various functions on the product from the following procedure.
From the Home screen, [ⓘ]▶[お客さまサポート (Customer support)]▶[取扱説明書 (Online Manual)] (Japanese)

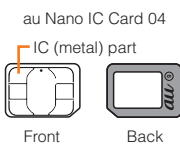


Also, you can check "Online Manual" (Japanese) on the au homepage.
https://www.au.com/online-manual/sov37/

In this manual, the contents on Android 8.0 are provided.

au IC card

Your phone number etc. is recorded in au IC card.
The product is compatible with au Nano IC Card 04.

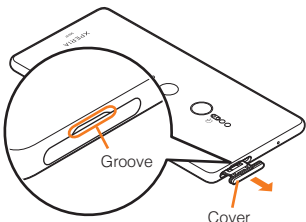


Attaching/removing au IC card

Before attaching/removing au IC card, make sure to turn off the product.

■ **Attaching au IC card**

1 Put your fingertip (nail) into the groove of the microSD memory card/au IC card slot and draw the cover in the direction of arrow



7

Turning the power on

Turning the power on

1 Press and hold Power key (over 1 sec.)

The product vibrates and after a while, the lock screen appears.

When "ようこそ (Welcome)" appears after the product is powered on, follow the onscreen instructions to set the initial settings.

For details on the initial settings, refer to "Setting Guide".

2 Swipe (flick) the screen up

The Home screen appears.

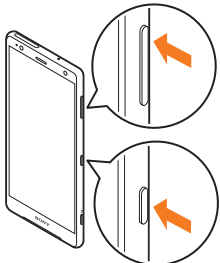
■ **Turning the power off**

1 Press and hold Power key (over 1 sec.)

2 [Power off]

❖**Information**

- To restart the product in safe mode (start with almost default state), press and hold Power key (over 1 sec.)▶Long-touch "Power off".

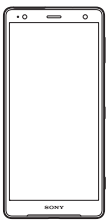


15

Packaged items

Before your start using the product, make sure that you have all the following packaged items with the product.

- Xperia XZ2
- USB Type-C™-3.5 φ conversion/ TV Antenna cable 01(03SOHSA)



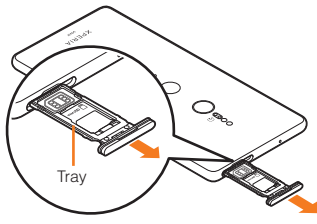
- 取扱説明書 (Basic Manual) (Japanese)
- ご利用にあたっての注意事項 (Cautions on using the product) (Japanese)
- 設定ガイド (Setting Guide) (Japanese)

The following items are not included in the package.

- microSD memory card
- AC adapter
- Earphones
- Desktop holder
- USB Type-C™ cable

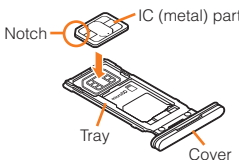
1

2 Pull out the tray straight from the main unit to remove



3 Set au IC card into the tray with the IC (metal) part facing up

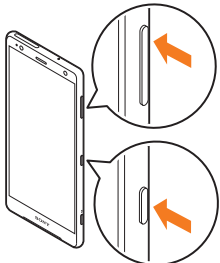
Pay attention to the orientation of notch.
Surely set au IC card into the tray not to come off.



8

■ **Force-quitting**

1 Press and hold Power key and the upper part of the volume key at the same time for approximately eight seconds, and release your fingers after the product vibrates three times consecutively



Locking the screen

Turn off the backlight of the screen to set sleep mode to prevent the touch panel or key from operating mistakenly or lock the screen.

1 While the screen is displayed, press Power key

■ **Unlocking screen lock**

The lock screen appears when turning the power on or the screen backlight is canceled by pressing Power key.

1 On the lock screen, swipe (flick) the screen up

❖**Information**

- Purchase a specified charger (sold separately).
- The battery is built into the product.
- Illustrations used in this manual are just images for explanations. They may be different from actual ones.

About Operating Instructions

■ **"Setting Guide"/"Basic Manual" (this manual)**
Handles only basic operations for main features.

■ **Online Manual (Japanese)**

Check "Online Manual" (Japanese) which describes detail explanations on various functions on the product from the following procedure.

From the Home screen, [ⓘ]▶[お客さまサポート (Customer support)]▶[取扱説明書 (Online Manual)] (Japanese)



Also, you can check "Online Manual" (Japanese) on the au homepage.

https://www.au.com/online-manual/sov37/

■ **"取扱説明書 (Full Instruction Manual)" (Japanese)**

For detailed descriptions on various functions, refer to the "取扱説明書 (詳細版) (Full Instruction Manual)" (Japanese) available on the au homepage.

https://www.au.com/support/service/mobile/guide/manual/

■ **For Those Requiring an English Instruction Manual**

You can download the English version of the instruction manual from the au homepage.

Download URL:

https://www.au.com/english/support/manual/

Regarding notations used in this document

- In this manual, keys (key icons) are represented by simplified illustrations such as . Please be forewarned.
- In this manual, operations of tapping menu items/icons/ buttons on the screen etc. are indicated as [(name of the item etc.)].
- In this manual, screens and operations for the product with au Nano IC Card 04 attached are described.
- Screen illustrations shown in this manual may look different from the actual screens. In some cases, minor details or a part of a screen may be omitted.
- In this manual, "Basic Manual" (this manual), "Cautions on using the product", "Setting Guide" and "取扱説明書 (詳細版) (Full instruction manual)" (Japanese) are collectively referred to as "Instruction Manual".
- In this manual, explanations for the theme "Black" are provided.
- In this manual, operations in portrait view are described as a standard. In horizontal view, menu items, icons, buttons on the screen, etc. may differ.
- In this manual, "au Nano IC Card 04" is abbreviated as "au IC card".

3

- The error message appears when au IC card is not set properly or there is a malfunction in au IC card.
- Do not lose au IC card after removed.
- Do not insert au IC card with conversion adapter attached. Doing so may cause a malfunction.

Attaching/Removing a microSD memory card

Before attaching/removing microSD memory card, make sure to turn off the product.

■ **Attaching a microSD memory card**

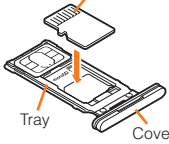
1 Put your fingertip (nail) into the groove of the microSD memory card/au IC card slot and pull out the cover

2 Pull out the tray straight from the main unit to remove

3 Set a microSD memory card into the tray with the terminal side facing up

Surely set a microSD memory card into the tray not to come off.

Terminals of microSD memory card



10

Using the touch panel

The display of the product is a touch panel operated by touching it with your finger.

■ **Tap/Double-tap**

Tap: Gently touch the screen and then immediately release your finger. Double-tap: Touch the same position twice.

■ **Long-touch**

Keep touching an item with your finger.

■ **Slide**

While your finger is gently touching the screen, trace it to the desired direction to move over.

■ **Swipe (flick)**

Operate the screen by quickly moving (flicking) your finger up/ down/left/right.

■ **Pinch**

Touch the screen with two fingers and widen (pinch-out) or narrow (pinch-in) the fingers' distance.

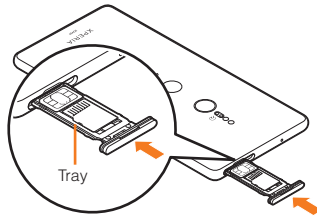
■ **Drag**

Keep touching an item or icon, trace it to the desired direction to move.

- In this manual, "microSD™" memory card (commercially available), "microSDHC™" memory card (commercially available)* and "microSDXC™" memory card (commercially available)* are abbreviated as "microSD memory card".
- All of the indicated amounts exclude tax unless otherwise specified.
- Company names and product names referred to in this manual are trademarks or registered trademarks of respective companies. The TM and ® marks may be omitted in this manual.
- "The Company" as appears in the manual refers to the following companies:
Sold by: KDDI CORPORATION, OKINAWA CELLULAR TELEPHONE COMPANY
Manufactured by: Sony Mobile Communications Inc.

4

4 Keep the product horizontal, insert the tray with the card into the main unit, and then push it straight
Pay attention to the orientation of the main unit and the tray.



5 Firmly press the tray to the end and check that there is no gap between the main unit and the cover

❖**Information**

- Do not touch the terminal of the microSD memory card.
- Insert a microSD memory card in the appropriate direction. Inserting forcibly could result in removal failure or may cause damage the card.

■ **Removing a microSD memory card**

1 Put your fingertip (nail) into the groove of the microSD memory card/au IC card slot and pull out the cover

2 Pull out the tray straight from the main unit to remove

3 Remove the microSD card from the tray, keep the the product horizontal, insert and push the tray straight into the main unit

Pay attention to the orientation of the tray and the main unit.

4 Firmly press the tray to the end and check that there is no gap between the main unit and the cover

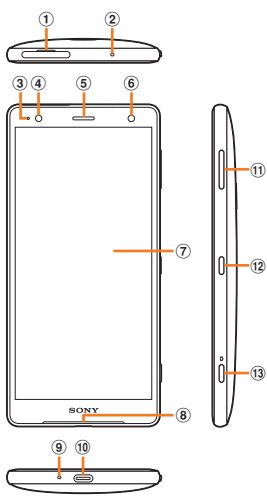
11

Getting Ready

Names and functions of parts

- 1 microSD memory card/ au IC card slot
- 2 Second microphone*1:
Reduces noise so that an opposite party can easily hear your voice.
- 3 Notification LED

- 4 Proximity/Light sensor:
Switches touch panel on and off to prevent from erroneous operation during a call/ Auto-control for display brightness.
- 5 Earpiece/Speaker
- 6 Front camera
- 7 Display (Touch panel)
- 8 Speaker
- 9 Mouthpiece/ Microphone
- 10 USB Type-C connection terminal
- 11 Volume key/Zoom key
- 12 Power key/Screen lock key
- 13 Camera key



5

Charging

When you purchase your product, the internal battery is not fully charged. Charge the battery before use.

❖**Information**

- When charging starts, the Notification LED of the product lights according to the battery level. To check the battery level, see the status bar in the top of the screen, or from the Home screen, [ⓘ]▶[Settings]▶[System]▶[About phone]▶[Status] and see "Battery level".
- If you start charging with the product turned off, a screen indicating the charging status launches but operations are not available. Thus, do not charge the product in a place where the use is prohibited.
- The charging time may take longer when charging with a PC or while using the camera function.
- To watch the TV while charging, use the Wireless Charging Pad compatible with Qi (sold separately).

■ **Charging with the AC Adapter**

Charging with connecting TypeC Common AC Adapter 02 (sold separately) is explained.

1 Insert the power plug of TypeC Common AC Adapter 02 (sold separately) into an outlet

2 Insert the USB Type-C plug of TypeC Common AC Adapter 02 (sold separately) into the USB Type-C connection terminal of the product straight

When charging is started with the product powered on, the start sound for charging sounds and the Notification LED of the product lights.

- 14 Built-in antenna *2
- 15 RGB-C-IR sensor:
Detects element of lighting source of shooting environment to adjust white balance automatically when shooting.
- 16 Nameplate*3
- 17 GPS/Built-in antenna*2
- 18 Flash/Photo light
- 19 Laser AF sensor:
Detects distance from an object when shooting to focus the camera on automatically.

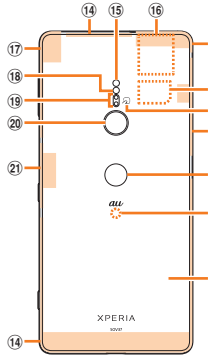
- 20 Camera lens
- 21 Wi-Fi® antenna*2
- 22 Wi-Fi®/Bluetooth® antenna*2
- 23 au IC card
- 24 ⌂ mark
- 25 Fingerprint sensor
- 26 Wireless charging touch point
- 27 Back cover*4

*1 Do not jab with a sharp object such as a needle. Doing so may cause a malfunction.

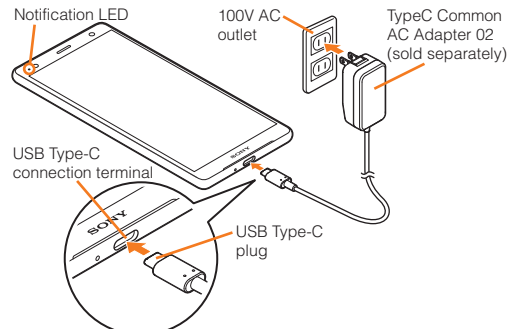
*2 The antenna is built in. Covering around the antenna by your hand may affect the quality of call/communication.

*3 A sticker with CE mark, FCC ID, IMEI information, etc. printed is attached. Do not remove the sticker or nameplate.

*4 The back cover is not removable. Removing forcibly might cause damage or a malfunction. Also, battery is built into the main unit and not removable by customers.



6



3 When charging is complete, remove the USB Type-C plug of TypeC Common AC Adapter 02 (sold separately) from the product

4 Remove the power plug of TypeC Common AC Adapter 02 (sold separately) from the outlet

TV antenna

To watch the TV, connect USB Type-C™-3.5 φ conversion/TV Antenna cable 01.

1 Insert the USB Type-C plug of USB Type-C™-3.5 φ conversion/TV Antenna cable 01 to the USB Type-C connection terminal of the product

❖**Information**

- When an app has notification, a dot or number may appear on the shortcut (app) or folder.

Using the Apps screen

In the Apps screen, apps which are installed to the product are displayed. Tap the icon to activate the app.

- You may incur communication charges depending on the function.

■ **Starting an app**

1 From the Home screen, [ⓘ]

When there are several pages in Apps screen, swipe (flick) left or right to switch the pages.

2 Tap an app icon to use

Some apps are stored in a folder.

■ **Main apps**

	Phone		Play Store
	Contacts		Camera
	au-mail		Album
	メッセージ (SMS) (PlusMessage (SMS))		Maps
	Google		Gmail
	Chrome		取扱説明書 (Online Manual) (Japanese)
	Settings		
	Calendar		

19

14

16

17

18

20

■ Setting app permission

When you activate an app/function that access the functions or information of the product for the first time, a confirmation screen for requesting access permission appears. If such confirmation screen appears, confirm the content and tap "DENY"/"ALLOW".

- If you do not permit, app/function may not be activated or use of function may be restricted.
- For some apps/functions, an explanation screen for the permission may appear. Several request screens may appear or the screen content may differ. Confirm each content and follow the onscreen instructions.
- In this manual, description of the confirmation screen may be omitted.

Knowing the status of the product

■ Status bar

You can check the status of the product with the icons displayed on the status bar at the top of the screen. On the left of the status bar, the notification icons appear to inform new mails, operations in progress, etc., and on the right, the status icons appear to indicate signal status, battery level, etc.



■ Examples of notification icons

	Missed call
	Incoming call/dialing call/calling
	New PC mail message
	New Gmail message
	New au-mail message
	New + message/new SMS
	USB device is connected/Moisture is detected on the USB Type-C connection terminal
	Wi-Fi [®] open network available

■ Main status icons

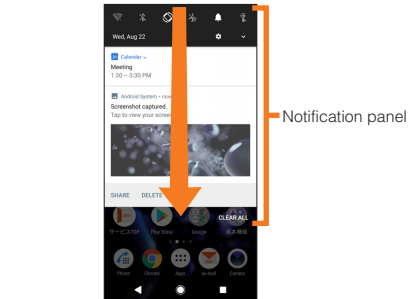
	Battery level (100%, Charging)
	Signal level (Level 4, Out of service area)
	4G (LTE/WiMAX 2+) data communication status ^{*1,2}
	Silent mode (Vibrate) is set
	Silent mode (Mute) is set
	Wi-Fi [®] connected ^{*2}
	Airplane mode is activated

^{*1} Two types of network, "LTE" and "WiMAX 2+" can be used. "4G" appears on the screen for both networks. The company determines which network is less busy depending on the condition of the line to connect.

^{*2} appears in the left of the icon during communication.

■ Notification panel

If any notification icons are displayed on the status bar, slide down the status bar to open the Notification panel. You can check the contents of notifications or start corresponding apps. Slide the status bar down with two fingers or slide the Notification panel down to display the quick setting panel. You can set on/off of the functions.



◆Information

- To delete a notification, swipe (flick) the notification left or right. However, some notifications may not be deleted.
- To close the Notification panel/quick setting panel, tap or slide the Notification panel/quick setting panel up.

■ Notification LED

The Notification LED prompts charging, or informs battery level while charging, missed calls, new mails, etc. by turning on or flashing.

LED Status	Description
Red	The battery is charging when the remaining battery level is 14% or lower.
Orange	The battery is charging when the remaining battery level is 15% - 89%.
Green	The battery is charging when the remaining battery level is 90% or higher.
Flashing red	The remaining battery level is 14% or lower.
Flashing white	Indicates a missed call, new au-mail, etc. ^{*1}
Flashing pale blue	Indicates a new mail, etc. ^{*1}

^{*1} Flashes in sleep mode

◆Information

- Flashing of Notification LED several times in red when Power key is pressed with the power off indicates that the remaining battery is not sufficient.
- Although Notification LED turns in red at the start of charging with the product powered off, the color of Notification LED changes according to the battery level after the charging status screen activates.

Phone

Making a call

■ Direct input calling

- 1 From the Home screen, []▶
- 2 Enter a phone number▶ To make a call to a land-line phone, enter from the city code even when you stay in the same city.
- 3 Call▶ To adjust the hearing volume (volume of the other party's voice), press the upper part or lower part of the volume key while calling.

■ Calling from Contacts

- 1 From the Home screen, []▶[Contacts]
- 2 Tap a contact to call
- 3 Tap /phone number

■ Calling from call log

- 1 From the Home screen, []▶Tap "" tab
- 2 [] of call log

■ Calling overseas from au mobile phones (au International Call Service)

You can make international calls without any special procedure from the product.

Example: To call to "212-123-XXXX" in the United States from the product

- 1 Dialpad screen▶Enter the international access number "010"
Touch and hold "0" to enter "+" which adds "010" automatically when dialing.
- 2 Enter the country code of the United States "1"
- 3 Enter the city code "212"
If the area code starts with "0", omit the "0". However, for some countries or regions such as Italy etc., "0" may be required.
- 4 Enter the phone number of the other party "123XXXX"▶

Receiving a call

■ When the backlight is OFF or on the lock screen

- 1 Swipe (flick) the incoming call screen up▶Swipe (flick) "" up
To reject the incoming call, swipe (flick) "" down.
To answer with Answering Machine, swipe (flick) "".
- 2 Call▶

■ When the backlight is ON (except on the lock screen)

- 1 In the displayed notification, [ANSWER]
To reject an incoming call, tap "DECLINE".
To answer with Answering Machine, tap the top part of the notification▶Swipe (flick) "".
- 2 Call▶

Checking own phone number

- 1 From the Home screen, []▶[Settings]
- 2 [System]▶[About phone]▶[Status]▶[SIM status]
You can check the phone number of the product in the My phone number field.

◆Information

- Alternatively, from the Home screen, []▶[Contacts]▶[]▶[My info] to check your phone number.

Appendix

Updating Software

- You can update the product to the most recent software for optimal performance and to get the latest enhancements.
- You are charged for the data communications when accessing the Internet from the product via data communication. A large amount of data communication is required especially for upgrading the software (OS upgrading). Using Wi-Fi[®] connection is recommended.
 - You are recommended to back up your data before updating software.
 - For details, visit <http://www.sonymobile.co.jp/support/> (Japanese) or refer to the Online Manual or "取扱説明書 (詳細版)" (Full instruction manual)" (Japanese) available on au homepage.

■ Downloading and updating software

- The update software can be downloaded from the product directly via Internet.
- Note that when Wi-Fi[®] communication becomes unstable, data communication takes the place automatically, which may incur communication charges.

- 1 From the Home screen, []▶[Settings]▶[System]▶[Software update]
- 2 []▶[Refresh]
After that, follow the onscreen instructions.

■ Setting the silent mode

- 1 Press the upper or lower part of the volume key
 - 2 []▶Press the lower part of the volume key
The icon on the volume adjusting bar changes to (white).
- Setting the silent mode (Mute)
- 1 Press the upper or lower part of the volume key
 - 2 []▶Press the lower part of the volume key
The icon on the volume adjusting bar turns to (gray).
- ◆Information
- When the silent mode is set, sounds for shutter, shooting start/end sound when shooting videos, alarm, playback of video, or music, etc. are not muted.
 - If you increase the volume in the silent mode by pressing the upper part of the volume key, or adjust the sound volume of "Ring volume" in "Sound" in the silent mode (Vibrate), the silent mode is canceled.
 - By tapping on the volume adjusting bar, you can adjust volume of media sound or alarm.

■ Setting Airplane mode

When the airplane mode is set, all wireless functions (phone, packet communication, Wi-Fi[®] function, Bluetooth[®] function, NFC Reader/Writer, P2P function) are turned off.

- 1 From the Home screen, []▶[Settings]▶[Network & Internet]
- 2 Tap "" of "Airplane mode" to turn to

Troubleshooting

Before you assume that the product is malfunctioning, perform "トラブル診断 (Diagnosis for trouble)" in "故障紛失サポート (Repair and Delivery Support)" app.

To use "トラブル診断 (Diagnosis for trouble)", from the Home screen, []▶[お客さまサポート (Customer support)]▶[故障紛失サポート (Repair and Delivery Support)]▶[トラブル診断 (Diagnosis for trouble)].

Or, visit au homepage and check with "トラブル診断 (Diagnosis for trouble)".

<https://www.au.com/trouble-check/> (Japanese)

After-sales service

■ When asking for repair

For repair, contact Repair and Delivery Support Center.

During the warranty period	Repairs will be done based on the terms of services of the free-of-charge repair warranty.
Outside the warranty period	We shall repair the product for a charge as requested by the customer if repair renders it usable.

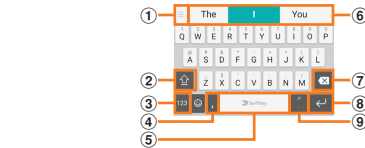
^{*} The warranty period is one year from the date you purchased the product.

Entering characters

Use the software keyboard (keyboard on the screen) to enter characters. The software keyboard appears when you tap the entry field for registering a contact, composing a mail, etc.

■ Using the software keyboard

With "SwiftKey Keyboard", which is default when the language is set to English, you can use QWERTY keyboard to enter characters, Numeric keypad to enter numbers and symbols, and Symbol keypad for more symbols.



- ① Open the keyboard customizing menu
- ② Switch between lower case, upper case and all caps
- ③ Display numbers and symbols
- ④ Tap to enter a comma
- ⑤ Enter a space
- ⑥ Predicted words, etc.
- ⑦ Delete character
- ⑧ Tap to enter a line feed
- ⑨ Enter punctuation

◆Information

- Before handing in the product for repair, make a backup of the contents of memory since they may disappear during repair. Note that the Company shall not be liable for any damages and loss of income should the contents of memory be altered or lost.
- Recycled parts that meet the Company's quality standards are sometimes used for repair.
- Collected au mobile phones by Replacement mobile phone delivery service which you used before are recycled to mobile phones for replacement after repairs. Also replaced parts by au after-sales service are collected and recycled by KDDI. They are not returned to customers.
- The product which is processed, remodeled, analyzed (including by modifying or analyzing the software (including by rooting etc.), reverse engineering, decompiling), or repaired by an unauthorized repair office is not covered by the warranty and repair may be refused.
- The battery built-into the main unit is not covered by free-of-charge repair warranty excluding events arising from defects of battery material or the production.
- The accessories such as USB Type-C™-3.5φ conversion/TV Antenna cable 01 are not covered the free-of-charge repair warranty.

■ Performance parts for repair

The Company retains performance parts for repair of the Xperia XZ2 main unit and its peripherals for four years after discontinuation of production. "Performance parts for repair" refers to parts required for maintaining the functions of the product.

◆Information

- Tap at the bottom left of the screen to hide the software keyboard.
- To enter a character variant, touch and hold a key to show a list of available options, and then select from the list.
- To enter a full stop, double-tap the space key after you enter a word.
- To use the gesture input, slide your finger from a character to character on the keyboard to trace the word you want to write, and then lift up your finger when finishing entering the word.

■ Provisions for free-of-charge repair

- 1.Please notify us of the production number (IMEI number) for repair request. The production number (IMEI number) can be checked on the product main unit, sticker on the outer packaging box, etc.
- 2.During the warranty period, we will repair the product free of charge for the malfunction under the condition that it is used correctly in line with the directions given in the instruction manual.
- 3.Even if the warranty period has not expired, a fee will be charged for repair under the following circumstances. (or, repair may not be possible).
 - ① The product has not been used correctly in line with the directions given in the instruction manual.
 - ② The malfunction or damage is due to unauthorized repair or modification of the product.
 - ③ The product has been repaired other than at our specified repair offices.
 - ④ The malfunction or damage is due to negligence in use or handling, or due to an accident. There are signs of the product having been dropped, wet, exposed to humidity, etc.
 - ⑤ The malfunction or damage is due to natural disasters (earthquakes, storm or flood damage, etc.), fire, salt damage, abnormal voltage, etc.
- 4.Repair may not be possible depending on the degree of damage.
- 5.The Company shall have no liability for any damage or loss resulting from the malfunction of the product.
- 6.The Company shall not bear any responsibility for accidents resulting from use of the product having been connected to unspecified devices.

For inquiries, call: Customer Service Center

For general information, charges and operation information (toll free)

Business hours 9:00–20:00 (7 days a week)

From fixed-line phones: From au mobile phones:

0077-7-111 | 157 without area code

PRESSING ZERO WILL CONNECT YOU TO AN OPERATOR

AFTER CALLING 157 ON YOUR au CELLPHONE.

In case above numbers are not available (toll free)

0120-977-033 (except Okinawa) | 0120-977-699 (Okinawa)

For loss or theft (Stop the service)(toll free)

Business hours : 24 hours live support

From fixed-line phones: From au mobile phones:

0077-7-113 | 113 without area code

In case above numbers are not available (toll free)

0120-925-314

Repair and Delivery Support Center

For loss, theft, damage (toll free)

Business hours 9:00–20:00 (7 days a week)

0120-925-919



やめましょう、歩きスマホ。

ソニー

Sold by: KDDI CORPORATION.
OKINAWA CELLULAR TELEPHONE COMPANY
Manufactured by: Sony Mobile Communications Inc.

June 2019, 1st Edition
1314-9109.1

- When you get a new au mobile phone by changing the model or purchasing an extra mobile phone, the "Repair and Delivery Support" membership for the old au mobile phone is automatically canceled.
- Service contents are subject to change without notice.

■ au IC card

The au IC card is lent to you by au. In case of loss or damage, the card will be replaced at your expense. When a malfunction is suspected, or in case of theft or loss, contact an au shop or PiPi.

Peripheral devices

- USB Type-C™-3.5φ conversion/TV Antenna cable 01 (03SOHSA)
- Sony Mobile Desktop Holder 02 (02SOPUA) (sold separately)^{*1}
- TypeC Common AC Adapter 01 (0601PQA) (sold separately)
- TypeC Common AC Adapter 02 (0602PQA) (sold separately)
- Common AC Adapter 05 (0501PWA) (sold separately)^{*2}
- Common DC Adapter 03 (0301PEA) (sold separately)^{*2}
- Wireless Charging Pad 02 (0102PUA) (sold separately)
- Micro-B Type-C Adapter (0601PHA) (sold separately)
- au Carrying Case G Black (0106FCA) (sold separately)^{*1} Use the Attachment 52B.
- ^{*2} For use, Micro-B Type-C Adapter (sold separately) is needed.

◆Information

- Accessories can be purchased from the au Online Shop. <http://onlineshop.au.com> (Japanese)

Main specifications

■ Main unit

Display	Approx. 5.7 inches TRILUMINOS [®] Display for mobile Approx. 16.77 million colors
Weight	1,080 x 2,160 dots Approx. 198g
Dimension (W x H x T)	Approx. 72 mm x 153 mm x 11.1 mm
Internal memory	ROM: Approx. 64GB RAM: Approx. 4GB
Camera pixels	Camera: Effective pixels Approx. 19.2 million pixels Front camera: Effective pixels Approx. 5 million pixels
Continuous call time	In Japan Approx. 2,250 min. Overseas (GSM) Approx. 720 min.
Continuous stand-by time	In Japan Approx. 540 hours Overseas (GSM) Approx. 570 hours

Charging time	Using TypeC Common AC Adapter 01 (sold separately): Approx. 170 min. Using TypeC Common AC Adapter 02 (sold separately): Approx. 170 min.
Continuous Full Seg watching time	Approx. 10 hours 10 min.
Continuous 1Seg viewing time	Approx. 11 hours 00 min.
Continuous tethering time	Approx. 610 min.
Wi-Fi [®] tethering maximum connection number	10
Bluetooth [®] function	Communication type Output Communication coverage distance ^{*1} Supported Bluetooth [®] profile ^{*2} Radio frequency band

- ^{*1} Varies by obstruction between communication devices or radio wave reception status.
- ^{*2} It is a specification according to purpose of use of Bluetooth[®] device and is defined by Bluetooth[®] standard.
- ^{*3} Some contacts data may not be displayed correctly on the other party's device.
- ^{*4} Supported to some car navigation systems. For use, refer to the au homepage.

◆Information

- The continuous call time, continuous stand-by time, continuous Full Seg watching time, continuous 1Seg viewing time and continuous tethering time may drop to less than half depending on the battery charging status, usage environment such as temperature, reception condition at the location where the product is used, and the function settings.

■ USB Type-C™-3.5φ conversion/TV Antenna cable 01

Size	Length Approx. 117 mm
Weight	Approx. 5g