

AQUOS R3

SHV44

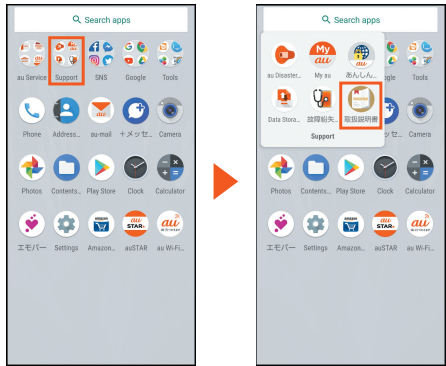
Setting Guide

Thank you for buying the “AQUOS R3 SHV44” (simply called the “product” from here on). This manual describes settings for using the product. * For illustrations and descriptions in this manual, refer to “Basic Manual” available on the au homepage. * Descriptions in this manual are based on Android™ version 9 Pie. * The company names and product names appearing in this manual are trademarks or registered trademarks of their respective holders. * Phone illustrations and screen shots are for descriptive purposes only, and may differ from the actual product.

May 2019, 1st Edition
Sold by: KDDI CORPORATION,
OKINAWA CELLULAR TELEPHONE COMPANY
Manufactured by: SHARP CORPORATION

Using “Online Manual” (Japanese)

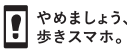
You can check “Online Manual” (Japanese) that describes detailed of various functions by operating the product as follows.



On the home screen, swipe up the screen to display the App list screen → [Support]. [取扱説明書] (Online Manual) (Japanese).

Also, you can check “Online Manual” (Japanese) on the au homepage.

<https://www.au.com/online-manual/shv44/>



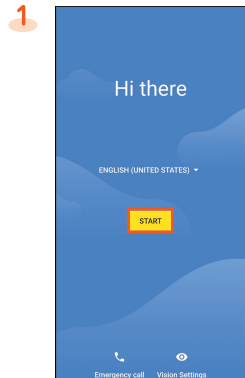
When using the product

- The battery is built into the product, and cannot be removed by the customer.
- To force the power off, hold down for 8 or more seconds (Release your finger after the product vibrates to turn the power off).

Initial Settings

The Google™ initial settings screen is displayed automatically when you turn the power on for the first time. Follow the on-screen instructions to set each function.

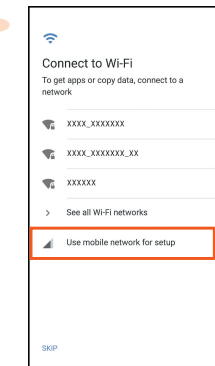
STEP1: Language Setting



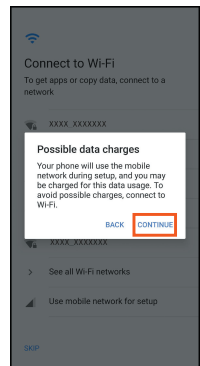
Select the language → [START].

STEP2: Wi-Fi® Connection/Data Transfer Settings

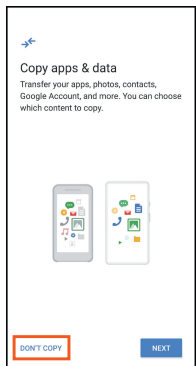
You may skip the steps here for making Wi-Fi® Connection/transferring data from another device settings. By using “Copy apps & data”, you can transfer data from an old device etc.



[Use mobile network for setup].



Confirm the contents and [CONTINUE].



[DON'T COPY].*

* To transfer data from another device, select “NEXT” and follow the on-screen instructions.

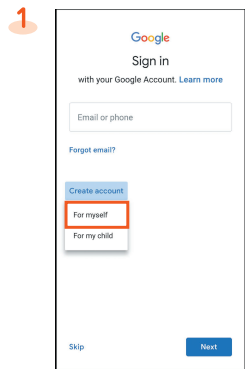
STEP3: Google Account Settings

You can use applications provided by Google Inc. such as “Play Store” and “Calendar” by setting up a Google account. You can use the product without a Google account set, but in such case some applications are not available.

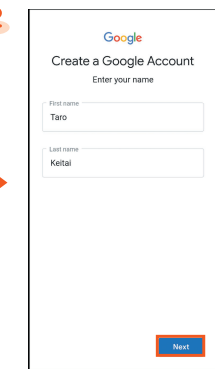
The main setting items are as follows.

Username	Register your Google account (user ID) and any characters which you want to use as a mail address. You can register any user name but you cannot set the same user name as another user's.
Password	Register the password for using your Google account.

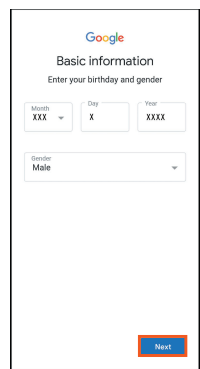
- The Google account setup screen is displayed when you also activate an application for which a Google account is required for the first time.
- Depending on how you operate, screens other than those below may be displayed.



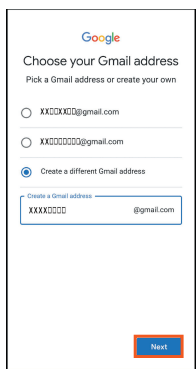
[Create account]* → [For myself].*



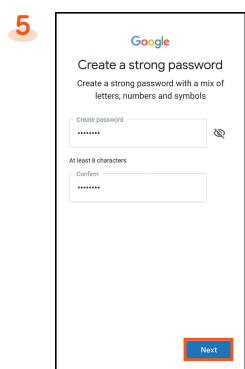
Enter your “First name” and “Last name” → [Next].



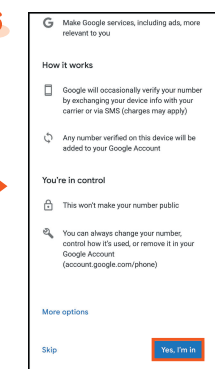
Enter basic information → [Next].



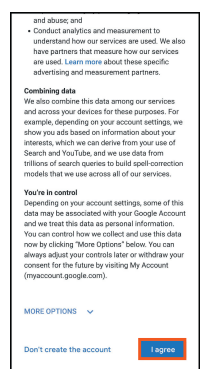
[Create a different Gmail address] → Enter your “Username” → [Next].



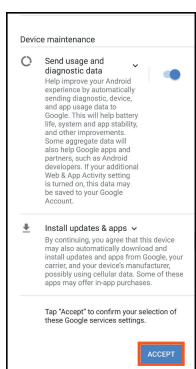
Enter the password → [Next].



Confirm the contents → [Yes, I'm in].



Confirm the contents → [I agree].

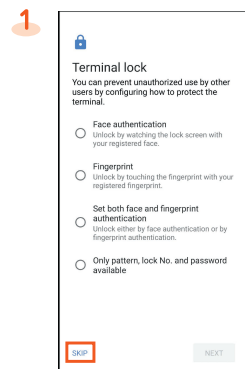


[Next] → Confirm the contents → [ACCEPT].

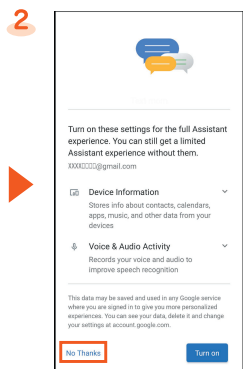
* If you already have a Google account, enter the e-mail address or your phone number. The above shows you the steps to create your own account.

STEP4: Google service Settings etc.

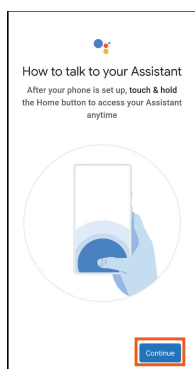
Set other items such as Google service, screen unlock.



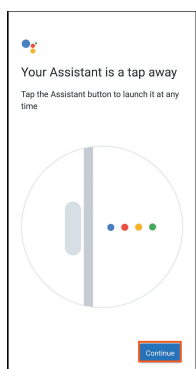
[SKIP].*



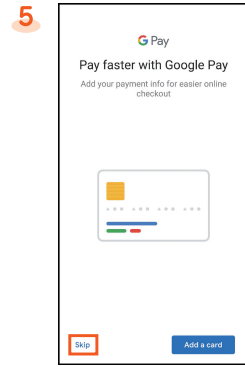
[No Thanks].*



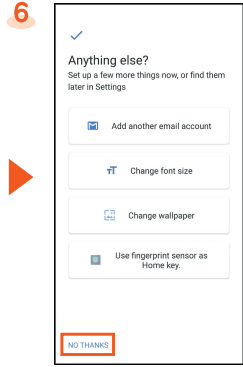
[Continue].



[Continue].



[Skip].*



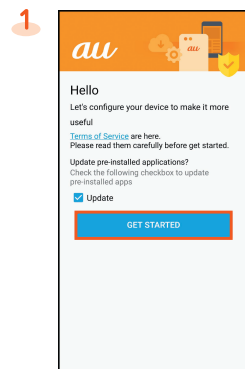
Tap “NO THANKS” to complete the settings.*

* To use each items, select it and follow the on-screen instructions.

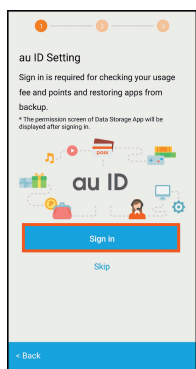
STEP5: au初期設定 (au Initial Setting)

You can use various services provided by au such as au Smart Pass and “au Simple Payment Service” in which you can purchase applications displayed on Google Play™ by setting an au ID.

au ID	Register your au phone number as an au ID.
au ID password	Register the password for using your au ID.
Security code	The four-digit security code you wrote on the application form.



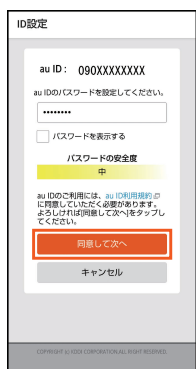
[GET STARTED].*¹



[Sign in].



Enter the security code → [次へ] (Next).*²



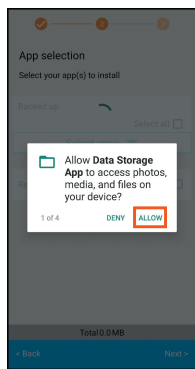
Enter the password → [同意して次へ] (Agree).*²



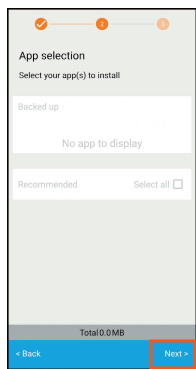
[次へ] (Next).



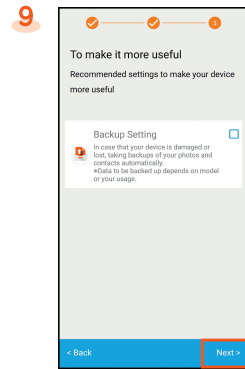
[OK].



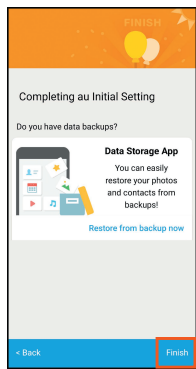
[ALLOW].*³



Mark the applications to install → [Next]



Confirm the contents and mark the item to set up → [Next].*⁴



[Finish].*⁵

*¹ When updating apps in the product, mark “Update”.

*² The input screen is displayed only when registering au ID for the first time.

*³ The confirmation screen for app permissions is displayed several times. Operate in the same way.

*⁴ To use the “Data Storage App” application and automatically store photos and address book entries to the au server, mark “Backup Setting”.

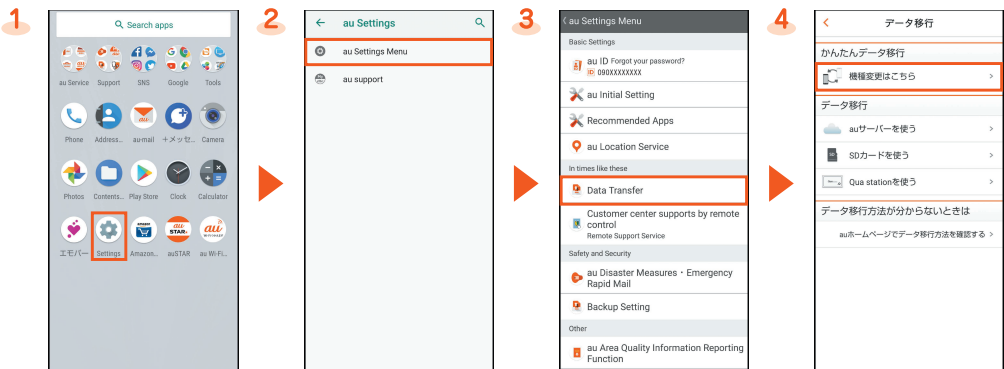
*⁵ If there are any data stored by “Data Storage App” application, you can restore them from it. Tap “Restore from backup now” and follow the on-screen instructions.

• Alternatively, on the home screen, swipe up the screen to display the App list screen → [Settings] → [au Settings] → [au Settings Menu] → [au Initial Setting].

How to Transfer Data with the au Settings Menu

You can return/store data from an old au phone to this product using a microSD™ memory card or server of au. To protect important data, be sure to save (back up) data periodically to a microSD™ memory card or server of au.

- To return data using an server of au, store data from the old au phone to the server of au beforehand. To use the server of au, you must set an au ID. (If the old au phone does not have au Settings Menu, use au Cloud application).
- To return data using a microSD™ memory card, save the data from the old au phone to the microSD™ memory card beforehand. (If the old au phone does not have au Settings Menu, use the au backup application.)



On the home screen, swipe up the screen to display the App list screen → [Settings].

[au Settings] → [au Settings Menu].

[Data Transfer].*

Select “機種変更はこちら” (If you have changed a model) and transfer data by following on-screen guidances.

* If a confirmation screen is displayed for terms of use/privacy policy, follow the on-screen guidances.

Automatically Storing Photos and Address Book Entries

Use the following steps to set automatic backup of photos and address book entries to the server of au using the “Data Storage App” application. You can automatically store them only with a Wi-Fi® connection.

- On the home screen, swipe up the screen to display the App list screen → [Settings] → [au Settings] → [au Settings Menu] → [Backup Setting] → Select the type of data to store automatically.

au-mail Settings and Changing au-mail Address

au-mail is a service which enables you to exchange e-mails with other cell phones which support e-mails and with PCs. An e-mails address is set automatically in the initial settings. You can change the e-mails address set in the initial settings.

- You cannot make the initial settings via Wi-Fi® communication.

Initial Settings

- If you have changed a model, an au-mail address from an old au phone is displayed.



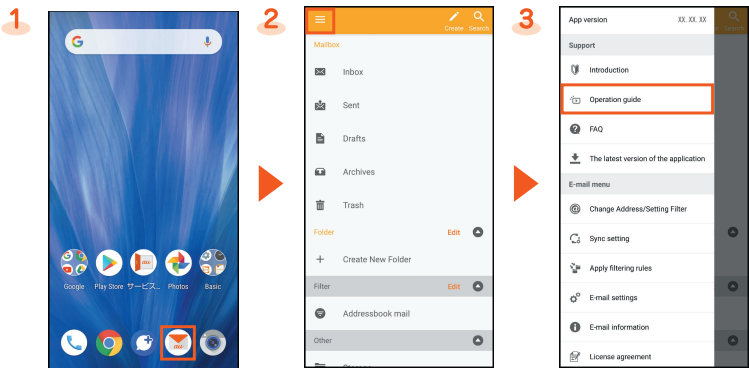
Home screen → [Mail].

Confirm the contents → [Agree].

Confirm the contents → [Agree].

Check au-mail address → [閉じる] (Close).

Checking the Usage Method of au-mail Address



On the home screen → [Mail].

[Operation guide] → Select the usage method to check.

Changing au-mail Address

- 1 On the home screen → [Mail] → [Menu] → [Change Address/Setting Filter].
- 2 [メールアドレスの変更へ] (To change mail address) → Enter the security code → [送信] (Send).
- 3 Confirm the contents → [承諾する] (Accept).
- 4 Enter an au-mail address → [送信] (Send).
- 5 [OK] → [閉じる] (Close).

Checking au-mail Address

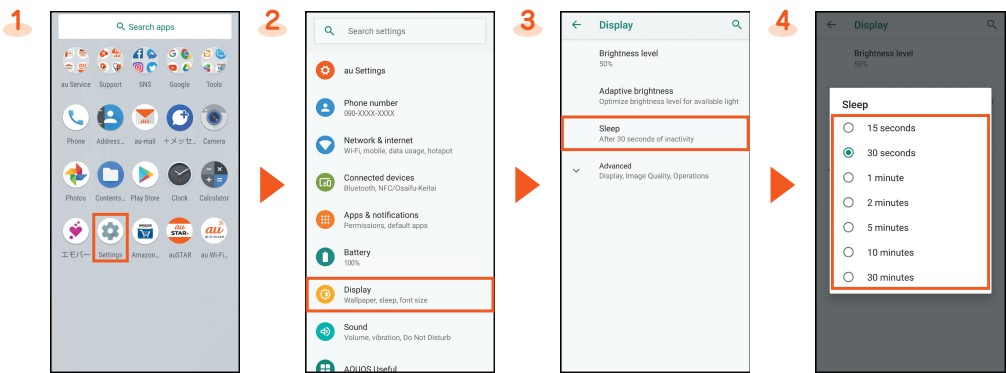
- 1 On the home screen → [Mail] → [Menu] → [E-mail information].
- Your au-mail address is displayed in the e-mail address field.

When the confirmation screen is displayed, follow the on-screen instructions.

Operations and displayed contents are subject to change without notice.

Increase the light duration of the backlight

The backlight is quickly turned off, change the setting.



On the home screen, swipe up the screen to display the App list screen → [Settings].

[Display].

[Sleep].

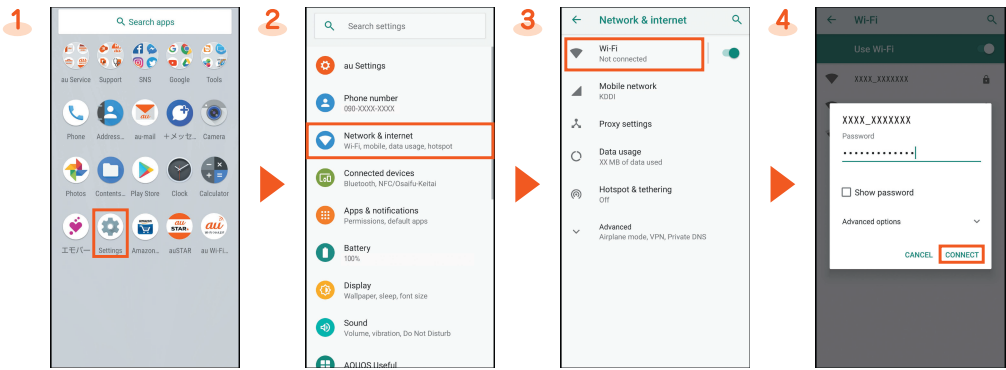
Select time.

Wireless LAN (Wi-Fi®) settings

You can connect to an Internet service via a household wireless LAN (Wi-Fi®) environment or a public wireless LAN environment when out and about.

To connect to an Internet via Wi-Fi®, you need to register an access point to connect in advance.

For detailed Wi-Fi® settings, refer to the “Online Manual”.



On the home screen, swipe up the screen to display the App list screen → [Settings].

[Network & Internet].

[Wi-Fi].*

Select an access point → Enter the password → [CONNECT].

* When [Wi-Fi] is disabled, switch to enable it.

Performing a Periodic Diagnosis

It is recommended that you perform a diagnosis for trouble-free smartphone use.



On the home screen, swipe up the screen to display the App list screen → [Support] → [故障紛失サポート] (Repair and Delivery Support)*

[クイック診断してみる] (Try quick diagnostic)

Follow the on-screen instructions.

Setting a Regular Cleaning Notice

Set a “定期クリーニング通知” (Regular Cleaning Notice) to let you know regularly when it is time for a diagnosis.



On the home screen, swipe up the screen to display the App list screen → [Support] → [故障紛失サポート] (Repair and Delivery Support)*1

[便利な機能] (Useful functions)

[各種設定] (Settings)

[スイッチ] for “定期クリーニング通知” (Regular Cleaning Notice).*2 *3

*1 When the confirmation screen is displayed, check the displayed contents and follow the on-screen instructions.

*2 Set so that “スイッチ” is displayed.

*3 When a notice is displayed, use “クイック診断してみる” (Try quick diagnostic) to perform a diagnosis.