

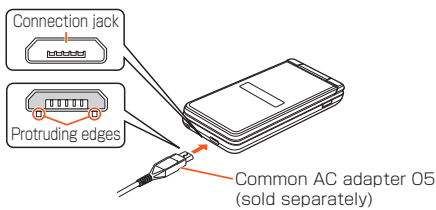




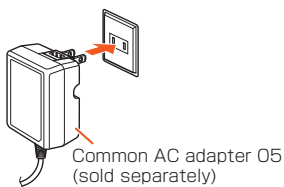
- If you perform various operations with a specified charger (sold separately) connected to the product, charging/discharging may take place repeatedly in a short time. Frequently charging the internal battery shortens its service life.
- If the charging/incoming indicator flashes in red, check whether the battery pack is attached and connected properly. Even if the indicator keeps blinking, stop charging and then contact an au shop or Repair and Delivery Support Center.

● Charging with a common AC adapter 05 (sold separately)

- 1 Confirm the direction of the microUSB plug of the common AC adapter 05 (sold separately) and insert it in the direction of the arrow to the external connection jack of the product.

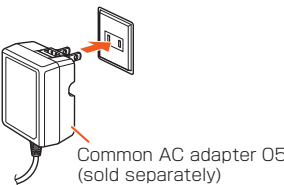
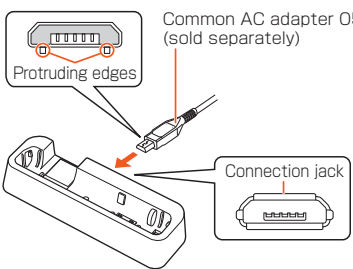


- 2 Plug the common AC adapter 05 (sold separately) power plug into a 100 V AC power outlet.

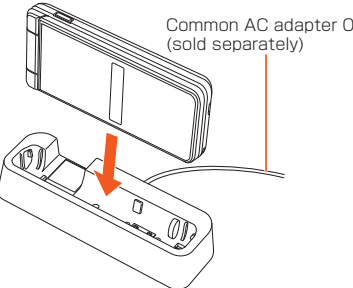


● Charging with a desktop holder (sold separately) and common AC adapter 05 (sold separately)

- 1 Insert the microUSB plug of Common AC Adapter 05 (sold separately) to the connection jack of the desktop holder (sold separately).
- 2 Plug the common AC adapter 05 (sold separately) power plug into a 100 V AC power outlet.



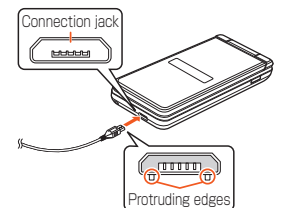
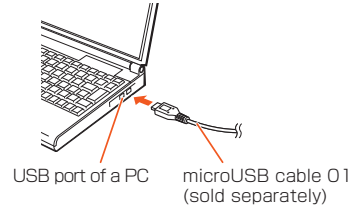
- 3 Mount the product in the desktop holder (sold separately).



● Charging with a PC

If you use the microUSB cable to charge the battery, it may take the battery longer to be fully charged than if you use the specified AC adapter (sold separately).

- 1 Connect the microUSB cable 01 (sold separately) to a USB port of a PC after the PC is activated completely.
- 2 Connect the microUSB cable 01 (sold separately) to the external connection jack of the product.



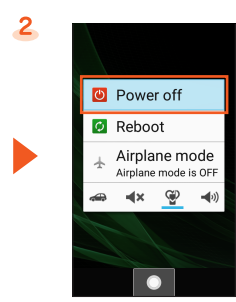
■ Turning the Power On/Off

● Turning the Power On



(hold down for at least 2 seconds)

● Turning the Power Off



[Power off]

Initial Settings

The first time the power is turned on, a screen for making initial settings is displayed, and you can set an au ID.

- To make initial settings in English, press [OK] → [はい] (Yes) once the "端末初期設定" (Device initial settings) screen is displayed, cancel initial settings, and then switch to English display. After switching to English display, restart the product, and an English screen for making initial settings will be displayed.

■ Switching the Display Language to English

You can switch the display language for function names and other items to English.



When the standby screen is displayed, press [OK] → [設定] (Settings).

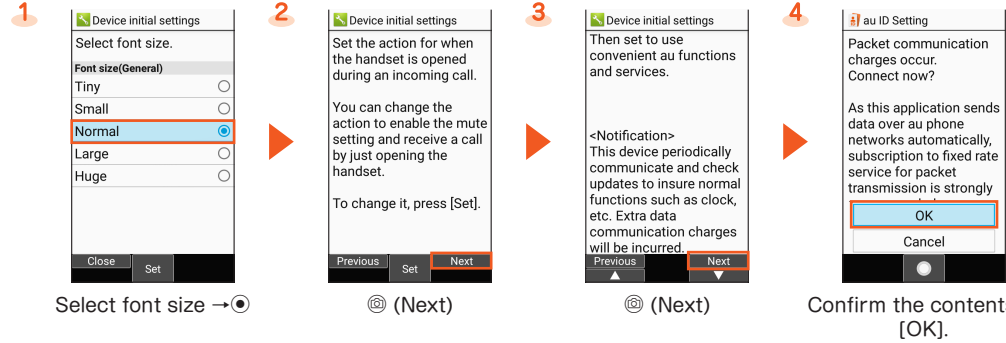
[その他] (Other settings) → [言語(Language)を選択] (Select language).

[English].

■ au ID Setting

An au ID is an identifier for customers using au services. Register your au phone number as an au ID. By setting an au ID, you can use various services provided by au such as au スマートパス (au Smart Pass), auお客さまサポート (au Customer Support), and au WALLET.

- Alternatively, when the standby screen is displayed, press [OK] → [Settings] → [au ID setting].

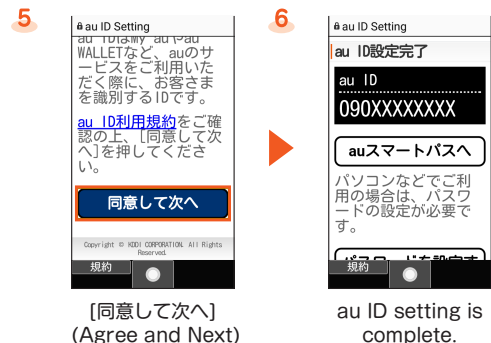


Select font size → [OK]

(Next)

(Next)

Confirm the contents → [OK].



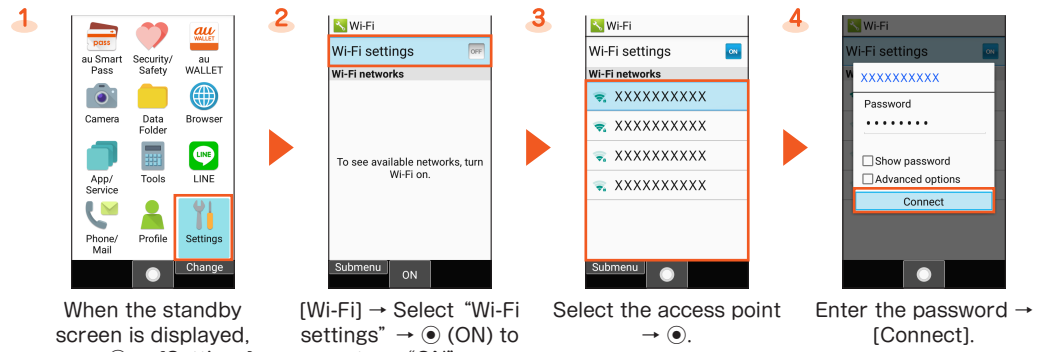
[同意して次へ] (Agree and Next)

au ID setting is complete.

Follow the instructions on the screen and operate after this step. Press [OK] → [Yes] to end the setting.

Making Wi-Fi® Settings

You can use a household wireless LAN (Wi-Fi®) environment or a public wireless LAN environment when outside to connect to an Internet service.



When the standby screen is displayed, press [OK] → [Settings].

[Wi-Fi] → Select "Wi-Fi settings" → [ON] to turn "ON".

Select the access point → [OK].

Enter the password → [Connect].

Checking Onscreen Status

Check the signal strength and battery level onscreen.



- ① Wi-Fi® signal strength  
[Wi-Fi] icon: Level display  
• During a communication, the icon is displayed with [Wi-Fi] superimposed.
- ② Signal strength (Receiving electric field)  
[Signal strength] icon: Level display [Signal strength] icon: Out of service area  
• The icon that indicates network is displayed at the upper left.  
[4G] icon: 4G (LTE) available  
[Roaming] icon: Roaming  
• During a communication, the icon is displayed with [Roaming] superimposed.
- ③ Battery level  
[Battery level] icon: Battery level display [Battery level] icon: No battery  
• While charging, the battery icon is displayed with [Charging] superimposed.

E-mail Settings and Changing E-mail Address

E-mail (@ezweb.ne.jp) is a service which enables you to exchange e-mails with other cell phones which support e-mail and with PCs. An e-mail address is set automatically in the initial settings. You can change the e-mail address set in the initial settings.

■ Initial Settings

- \* You cannot set e-mail settings via Wi-Fi® communication.

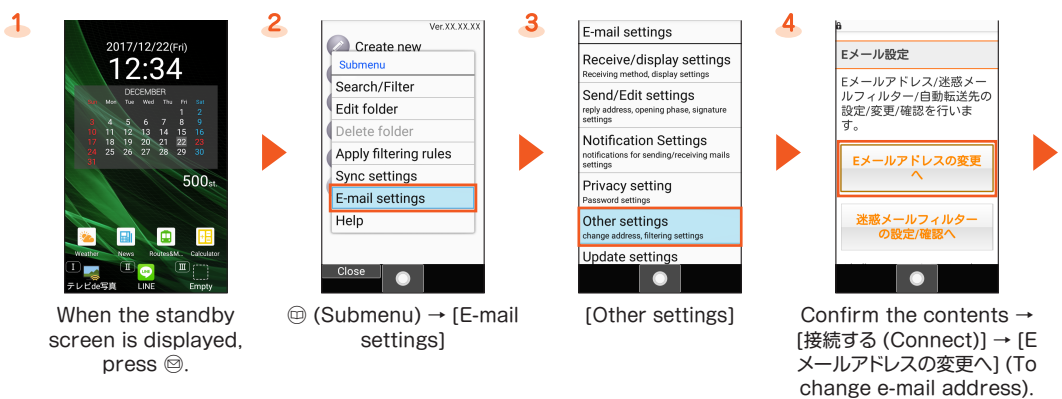


When the standby screen is displayed, press [OK].

Confirm the contents → [接続する] (Connect).

Confirm the contents → [閉じる] (Close).

■ Changing E-mail Address

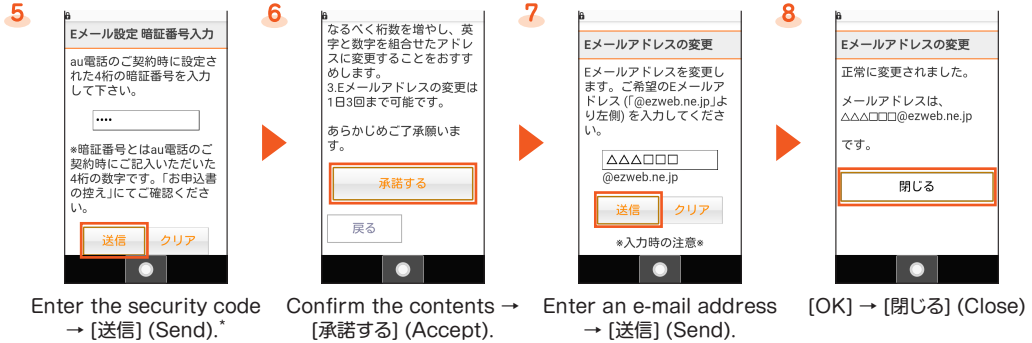


When the standby screen is displayed, press [OK].

(Submenu) → [E-mail settings]

[Other settings]

Confirm the contents → [接続する] (Connect) → [Eメールアドレスの変更へ] (To change e-mail address).



Enter the security code → [送信] (Send).

Confirm the contents → [承諾する] (Accept).

Enter an e-mail address → [送信] (Send).

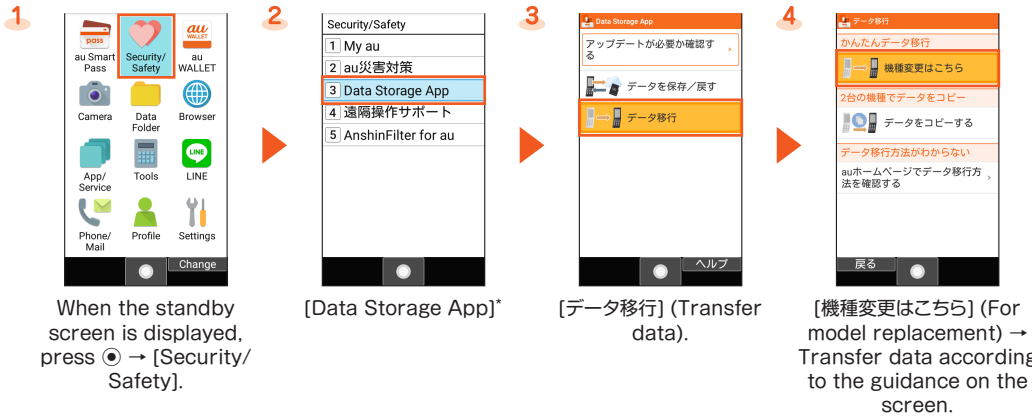
[OK] → [閉じる] (Close)

- \* The security code is the 4-digit number set at subscription.

Transferring Data with the Data Storage App

You can return/save data from your old au phone to the product using a microSD memory card or au server.

- To return data using au server, store the data from the old au phone to au server beforehand. Setting au ID is required for using an au server (If the old au phone does not have au Settings Menu, use au Cloud app).
- For restoring data using microSD memory card, save the data to the microSD memory card using your previously used au phone in advance (If the old au phone does not have au Settings Menu, use au backup app).



When the standby screen is displayed, press [OK] → [Security/Safety].

[Data Storage App]

[データ移行] (Transfer data).

[機種変更はこちら] (For model replacement) → Transfer data according to the guidance on the screen.

- \* If a confirmation screen is displayed for terms of use, privacy policy, etc., follow the onscreen instructions.

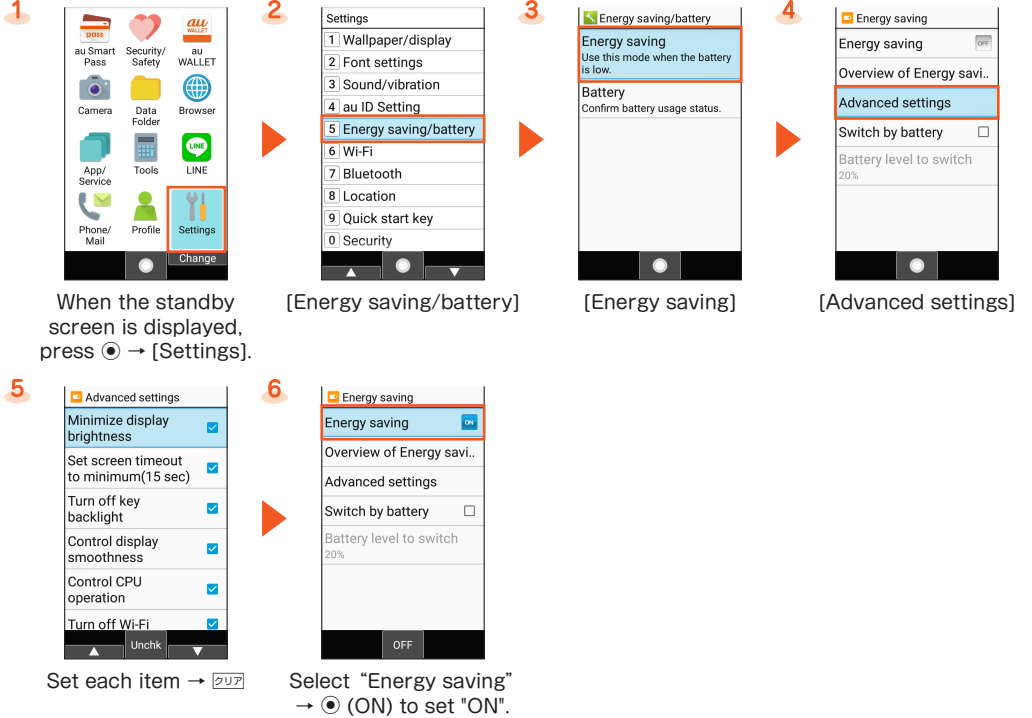
To use "Data Storage App" to back up contacts to au server automatically, set as follows.

- From the standby screen, press [OK] → [Security/Safety] → [Data Storage App] → [データを保存/戻す] (Save/Return data) → [auサーバーを使う] (Use au server) → [アドレス帳の自動お預かり設定] (Contacts auto backup setting)

Reducing Battery Consumption

You can reduce battery consumption by enabling energy saving.

- Enabling energy saving may prevent some applications from operating properly.



When the standby screen is displayed, press [OK] → [Settings].

[Energy saving/battery]

[Energy saving]

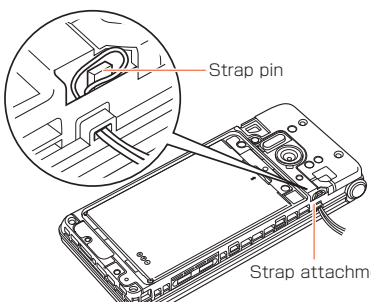
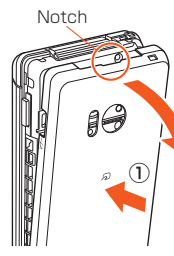
[Advanced settings]

Set each item → [OK]

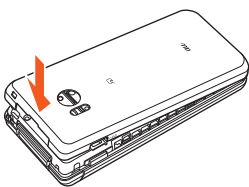
Select "Energy saving" → [ON] to set "ON".

Attaching a Strap

- 1 While keeping the back cover held in the middle (①), pull the back cover by the notch in the direction shown to remove (②).
- 2 Let the strap attachment part through the hole, and hook it on the strap pin completely and pull it outwards.



- 3 Place the back cover on the product.



- 4 Press along the edges of the back cover in the direction shown to close firmly.

