



Galaxy A30

Setting Guide

SCV43

Using by this product



You can use the Online Manual.

* If the confirmation screen of how to use is displayed, follow the on-screen instructions.

Using by PC, etc.
Refer to the au homepage.
<https://www.au.com/online-manual/scv43/>
(Japanese)

Downloading instruction manual

From the page of the instruction manual downloading list, search "SCV43" with "model name, model number" and download the instruction manual.
* To display the page of the instruction manual downloading list, search "Instruction manual" on the au homepage (<https://www.au.com/english/>).



This manual is described with the content of Android 9.0.
For the latest information, please refer to the "設定ガイド (Setting Guide)" (Japanese) available on the au homepage.
<https://www.au.com/support/service/mobile/guide/manual/> (Japanese)
Company names and product names referred to in this manual are trademarks or registered trademarks of respective companies.

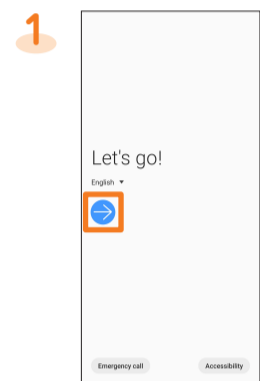
Sold by: KDDI CORPORATION, OKINAWA CELLULAR TELEPHONE COMPANY
Imported by: SAMSUNG ELECTRONICS JAPAN Co., Ltd.
Manufactured by: Samsung Electronics Co., Ltd.
June 2019, 1st Edition

Initial settings



The first time the product turns ON, the initial setting screen appears automatically. Follow the guidance to make the settings.
* Depending on the settings, setting contents and displays may differ.

STEP START



[日本語] (Japanese) → [English] → [OK] → []

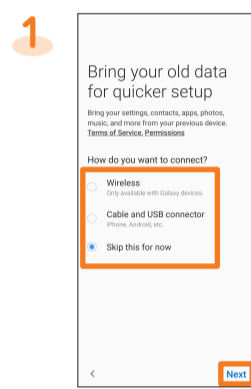
To change the language after it has been initially set, on the home screen, flick up or flick down → [設定 (Settings)] → [一般管理 (General management)] → [言語とキーボード (Language and input)] → [言語 (Language)] → [言語を追加 (Add language)] → select language you want to use → [標準に設定 (Set as default)].

STEP 1: Check the terms and conditions



Tap each agreement → confirm the content → [<] → after confirming all the contents, tap each agreement to agree → [Next]

STEP 2: Setting for restoring data

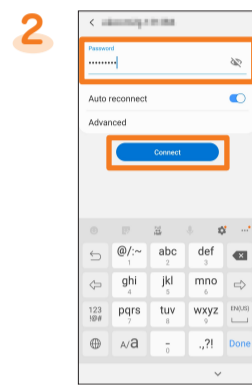


Select the way to restore your old data → [Next]
* In this manual, select "Skip this for now" → [Next]. To restore the data, follow the on-screen instructions.

STEP 3: Wireless LAN (Wi-Fi®) function setting



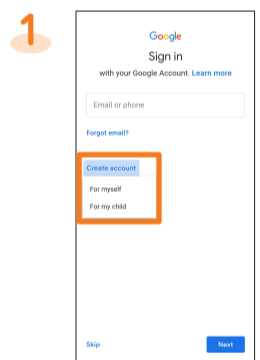
Tap Wi-Fi® network to connect
* Tap [Skip] to set later.



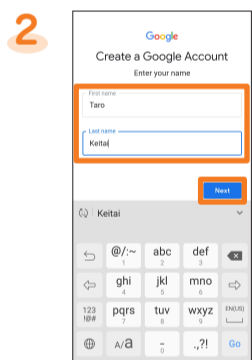
Enter a password (security key) → [Connect] → [Next]

● Password (security key) is set on access point. Check the password in advance.

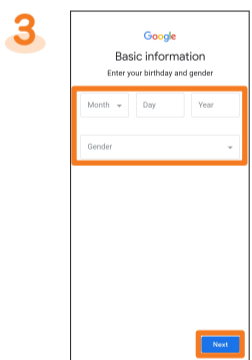
STEP 4: Google Account setting



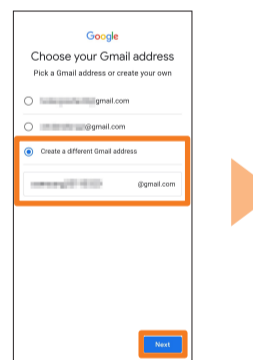
[Create account] → [For myself] / [For my child]¹



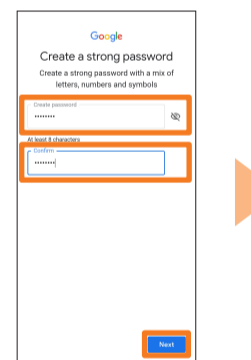
Enter your "First name" and "Last name" → [Next]



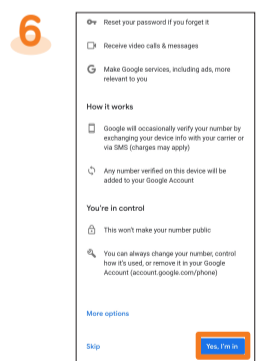
Enter your birthday and select gender → [Next]



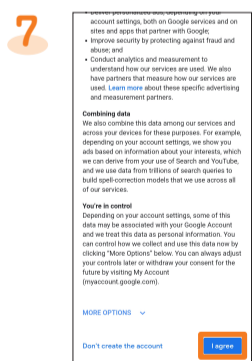
Select "Create a different Gmail address"² → enter an address → [Next]



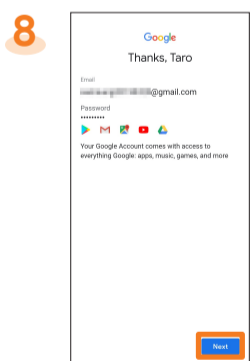
Enter your password → reenter the password → [Next]



Confirm the contents → [Yes, I'm in]



Confirm the contents → [I agree]



[Next]

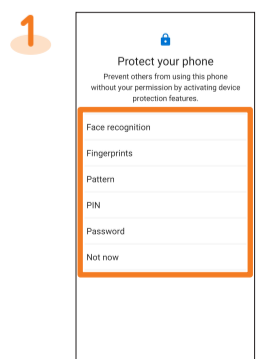


[Next]

● Set up Google account to use Google applications such as "Gmail", and "Google Play". Gmail address "(User name)@gmail.com" is automatically created by user name set in Google account.
● If you already have a Google account, tap the "Email or phone" field in step 1.

¹ In this manual, the steps of [For myself] are described. To create an account for children, follow the on-screen instructions.
² In this step, you can select the address displayed on the screen.

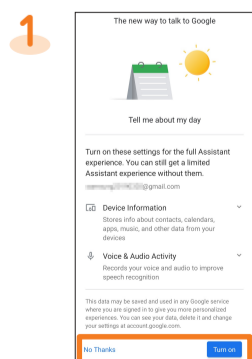
STEP 5: Protect setting



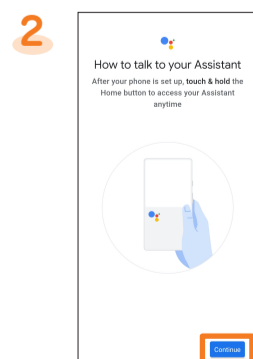
Set whether to protect the product

● To protect, select [Face Recognition], [Fingerprints], [Pattern], [PIN], or [Password].
● To not protect, select [Not now] → [Skip anyway].

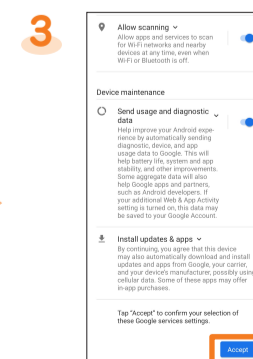
STEP 6: Functions/Service setting



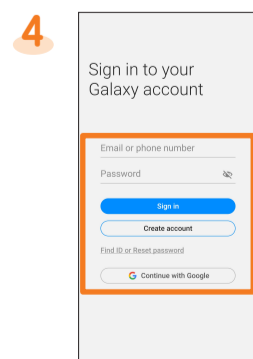
Set whether to enable the Google Assistant



Confirm the contents [Continue]



Confirm the contents [Accept]¹



Set Galaxy account as required² → [Finish]³

¹ If you do not enable the setting, tap " to " .
² If you do not set the Galaxy account, tap [Skip] → [Skip].
³ You need to set "au Initial Setting" after finishing "Initial setting". See the next page for details.

au Initial Setting

- [GET STARTED]¹**
- [Sign in]²**
- Enter a security number³ → **[次へ]** (Next)
- Enter a password → **[同意して次へ]** (Agree and next)
- [次へ]** (Next)
- [OK]**
- [Allow]⁴**
- Place checkmarks on the application to be installed⁵ → **[Next]**
- Place checkmarks on the item to be set → **[Next]**
- [Finish]⁶**

- With au initial setting, you can make settings for updating pre-installed applications, setting au ID, downloading applications previously used, or using this product more conveniently.
- When you have set an au ID, you can use various au services including "auかんたん決済 (au Simple Payment Service)" which offers you a simple way to purchase applications from au Smart Pass and Google Play.

*1 Check "Update", if you want to update pre-installed applications.
 *2 If you have registered an au ID previously, step 3 and 4 are not displayed. Proceed to step 5.
 *3 The security number is the four-digit security code you wrote on the application form.
 *4 A confirmation screen is displayed for permission several times. Continue by following the on-screen instructions.
 *5 If "Select apps" is displayed in the "Backed up" field, you can check the application by tapping.
 *6 If you have backup data in "Data Storage App" application, the data can be returned by tapping "Restore from backup now".

au-mail settings

Initial setup

- The au-mail address will be determined automatically after initial setup.
- Initial setup cannot be available with Wi-Fi^B connecting.
- To use au-mail, subscription to LTE NET is required.
- Operation and screen may be changed without notice.

- On the home screen, **[メール]**
- Confirm the contents → **[Agree]**
- Confirm the au-mail address → **[閉じる]** (Close)

* If the confirmation screen is displayed, follow the on-screen instructions.

Checking au-mail address

- On the home screen, **[メール]** → **[メニュー]** → **[E-mail information]**
Your au-mail address appears in the E-mail address field.

Checking how to use au-mail application

- On the home screen, **[メール]**
- [メニュー]**
- [Operation guide]**
* Tap the item which you want to check.

Changing your au-mail address

The au-mail address which automatically decided by initial setup can be changed.

- On the home screen, **[メール]** → **[メニュー]** → **[Change Address/Setting Filter]**
- [メールアドレスの変更へ]** (To change E-mail address) → enter the security code → **[送信]** (Send)
- Confirm the contents → **[承諾する]** (Accept)
- Select "ご希望のメールアドレスに変更する" (Change to your desired e-mail address) → enter au-mail address → **[送信]** (Send)
- [OK]** → **[閉じる]** (Close)

How to transfer data from the au Settings Menu

- You can restore/store data from your previous au phone to this product using a microSD memory card or au server.
- If you restore data using au server, store the data using your previous au phone to au server in advance. You need to set up an au ID to use the au server. (If your previous au phone does not have the au Settings Menu, use the au Cloud app.)
- If you restore data using a microSD memory card, save the data using your previous au phone to a microSD memory card. (If your previous au phone does not have the au Settings Menu, use the au backup app.)

- On the home screen, flick up or flick down
- [Settings]**
- [au Settings Menu]**
- [Data Transfer]**
* If the confirmation screen is displayed, follow the on-screen instructions.
- [機種変更はこちら]** (Model changing is here) and perform data transfer according to the screen guidance.

If you want to store your pictures, address book (contacts), etc. automatically to the au server using データお預かりアプリ (Data Storage App), you can set up by following procedure.

- On the home screen, flick up or flick down → **[Settings]** → **[au Settings Menu]** → **[Backup Setting]** → select the type of data to automatically store

Setting screen brightness and screen timeout

- On the home screen, flick up or flick down
- [Settings]**
- [Display]**
- Setting screen brightness: Drag the "Brightness" slider to the right and left to adjust the brightness
- Setting screen timeout: Tap the time until screen turns off

Performing a periodic diagnosis

You are recommended to use this function for comfortable use of the product.

- On the home screen, flick up or flick down → **[au ツール/サポート]** (au tool/support) → **[故障紛失サポート]** (Repair and Delivery Support)
- [クイック診断してみる]** (Try Quick Diagnosis)
- From here on, follow the on-screen instructions.

* When the confirmation screen is displayed, confirm the content and follow the on-screen instructions.

Setting notification for periodical cleaning

Set "定期クリーニング通知" (Notification of periodical cleaning) to notify you of timing to diagnose periodically.

- On the home screen, flick up or flick down → **[au ツール/サポート]** (au tool/support) → **[故障紛失サポート]** (Repair and Delivery Support)
 - [便利な機能]** (Useful functions)
 - [各種設定]** (Various settings)
 - Tap "●" to "●" of "定期クリーニング通知" (Notification of periodical cleaning)
- * When you receive the notification, try diagnosis with "クイック診断してみる (Try Quick Diagnosis)".