

Setting Guide

Introduction

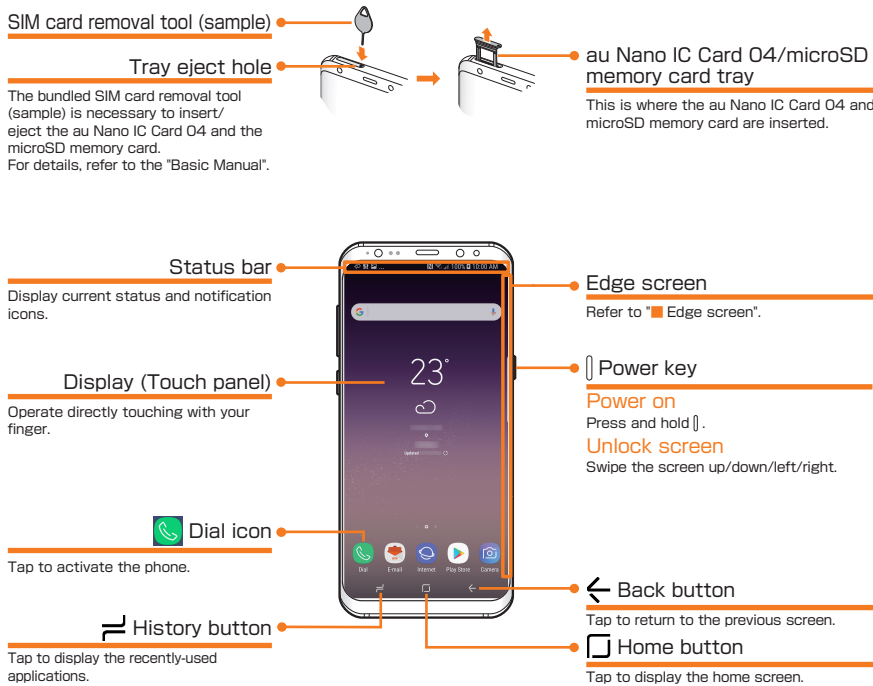
Thank you for buying the Galaxy S8 (simply called the "product").
In this guide, settings and precautions for using the product are described.
For basic operations, refer to the "Basic Manual" or the "Basic Manual application" installed on the product.
Company names and product names referred to in this manual are trademarks or registered trademarks of respective companies.

- **Basic operation**
Describes the basic operations and names of parts.
- **Initial settings**
Describes how to configure settings when turning on the power for the first time.
- **Mail settings**
Make initial settings to use E-mail (@ezweb.ne.jp).
- **Basic Manual application**
Downloads and uses the "Basic Manual application".
- **Making a call**
Describes how to make a call.
- **Receiving a call**
Describes how to receive a call.
- **Importing/Exporting contacts**
Describes how to import and export contacts to this product using the au Nano IC Card O4 or the microSD memory card.
- **How to transfer data from the au Settings Menu**
Describes how to restore and store data into this product from the previously used au phone.
- **Viewing/playing data**
Describes how to view/play images or video data.
- **How to back up data to a PC**
Describes how to back up data to a PC.
- **Setting screen brightness and screen timeout**
Describes how to set screen brightness and screen timeout.

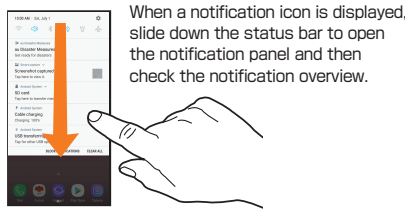
Sold by: KDDI CORPORATION, OKINAWA CELLULAR
TELEPHONE COMPANY
Imported by: SAMSUNG ELECTRONICS JAPAN Co., Ltd.
Manufactured by: Samsung Electronics Co., Ltd.
April 2017, 1st Edition

Basic operation

For details, refer to the "Basic Manual application" installed on the product or "取扱説明書 (詳細版) (Full Instruction Manual)" (Japanese) available on the au homepage.



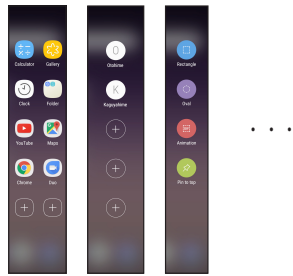
Opening notification panel



Edge screen

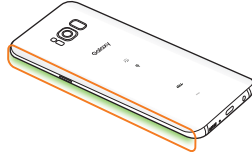
Edge panels

On the Edge panels, you can register contacts and apps, capture a screen as image or GIF animations, and display various information.



Edge lighting

You can check whether you have received a call when the product is face down by the lights on the Edge screen.



Touch panel operations

Tap

Lightly touch the screen and then immediately release your finger.



Slide

If the displayed item does not fit within the screen, lightly touch and trace to the desired direction.



Pinch

Touch the screen with two fingers and widen (pinch-out) or narrow (pinch-in) the fingers' distance.



Touch and hold

Keep touching an item etc. with your finger.



Flick (Swipe)

Quickly move (flick) your finger up, down, right, or left.



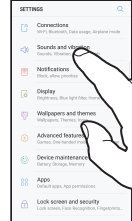
Drag

Keep touching an item or icon, trace it to the desired direction.



Selecting item

To select displayed item or icon, tap the screen directly with your finger.



Displaying menu

There are a few methods to display a menu, by tapping " " or by touching and holding an entry field or item.

Switch setting

When checkbox, radio button or ON/OFF switch appears at side of setting item, tap check box, radio button or ON/OFF switch to switch the ON/OFF of the setting.

Icon	Description
<input checked="" type="checkbox"/>	Setting is On.
<input type="checkbox"/>	Setting is Off.

Configuring the app's permissions

When you access a function or information on the terminal for the first time, a confirmation screen will appear requesting you to permit the access.
If a confirmation screen appears, read through the displayed information and tap either "DENY" or "ALLOW".
• A screen explaining the permission may be displayed for some apps/functions. Or, a confirmation screen may appear multiple times and or be displayed differently. Check the displayed information carefully and follow the on-screen instructions.
• If you do not select "ALLOW", you may be unable to activate the app/function or the function may be restricted.
• Descriptions on the contents displayed on the confirmation screen(s) may have been omitted in this manual.

Character entry

To enter characters, tap character entry field to display keyboard and then tap each key.

Software keyboard

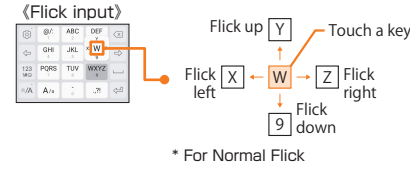
Use "3x4 Keyboard" or "QWERTY Keyboard".



Tap " ", and in the displayed menu, tap "3x4 Keyboard ⇄ QWERTY Keyboard" to toggle between "3x4 Keyboard" and "QWERTY Keyboard".
If the " " is not displayed, press and hold the buttons that are located here in the screenshots and select " ".

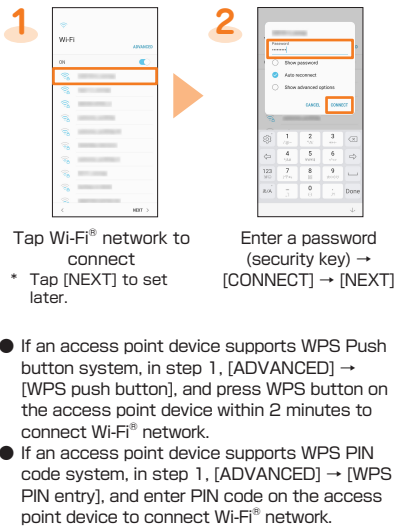
Flick input

In "3x4", entering candidates for flick input appears as shown when you touch and hold a key. (Flick input)



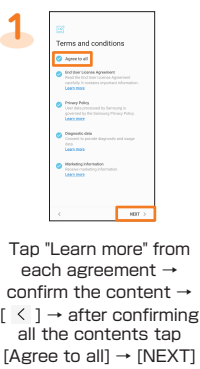
STEP 1: Wireless LAN (Wi-Fi®) function setting

Use your home wireless LAN (Wi-Fi®) or public wireless LAN to connect to the Internet.
* Password (security key) is set on access point. Check in advance.



- If an access point device supports WPS Push button system, in step 1, [ADVANCED] → [WPS push button], and press WPS button on the access point device within 2 minutes to connect Wi-Fi® network.
- If an access point device supports WPS PIN code system, in step 1, [ADVANCED] → [WPS PIN entry], and enter PIN code on the access point device to connect Wi-Fi® network.

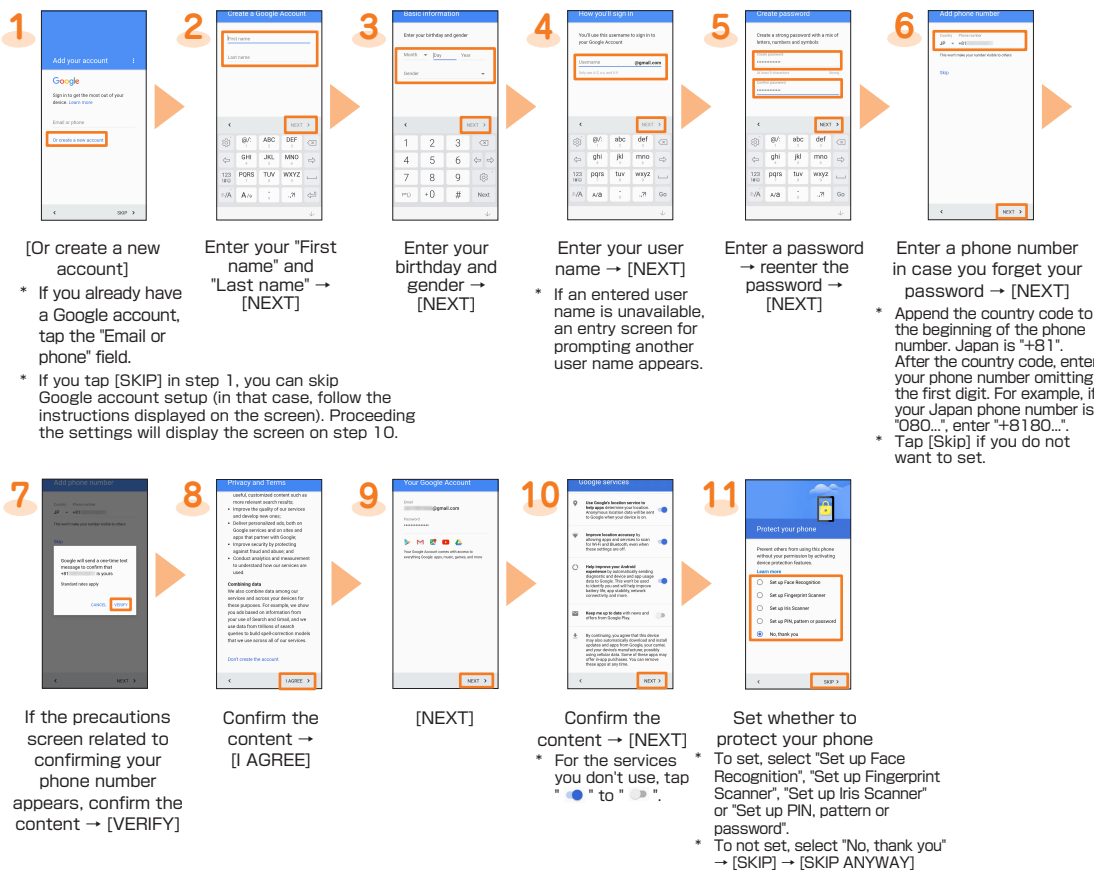
STEP 2: Check the terms and conditions



Tap "Learn more" from each agreement → confirm the content → [<] → after confirming all the contents tap [Agree to all] → [NEXT]

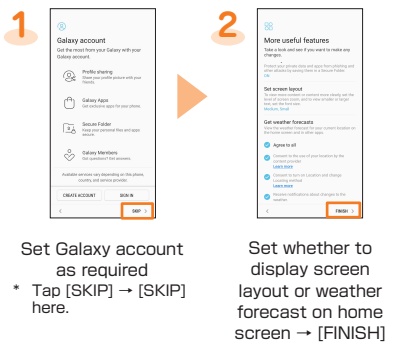
STEP 3: Google setting

Set up Google account to use Google applications such as "Gmail", and "Google Play". Gmail address "(User name)@gmail.com" is automatically created by user name set in Google account.



STEP 4: Set up is complete

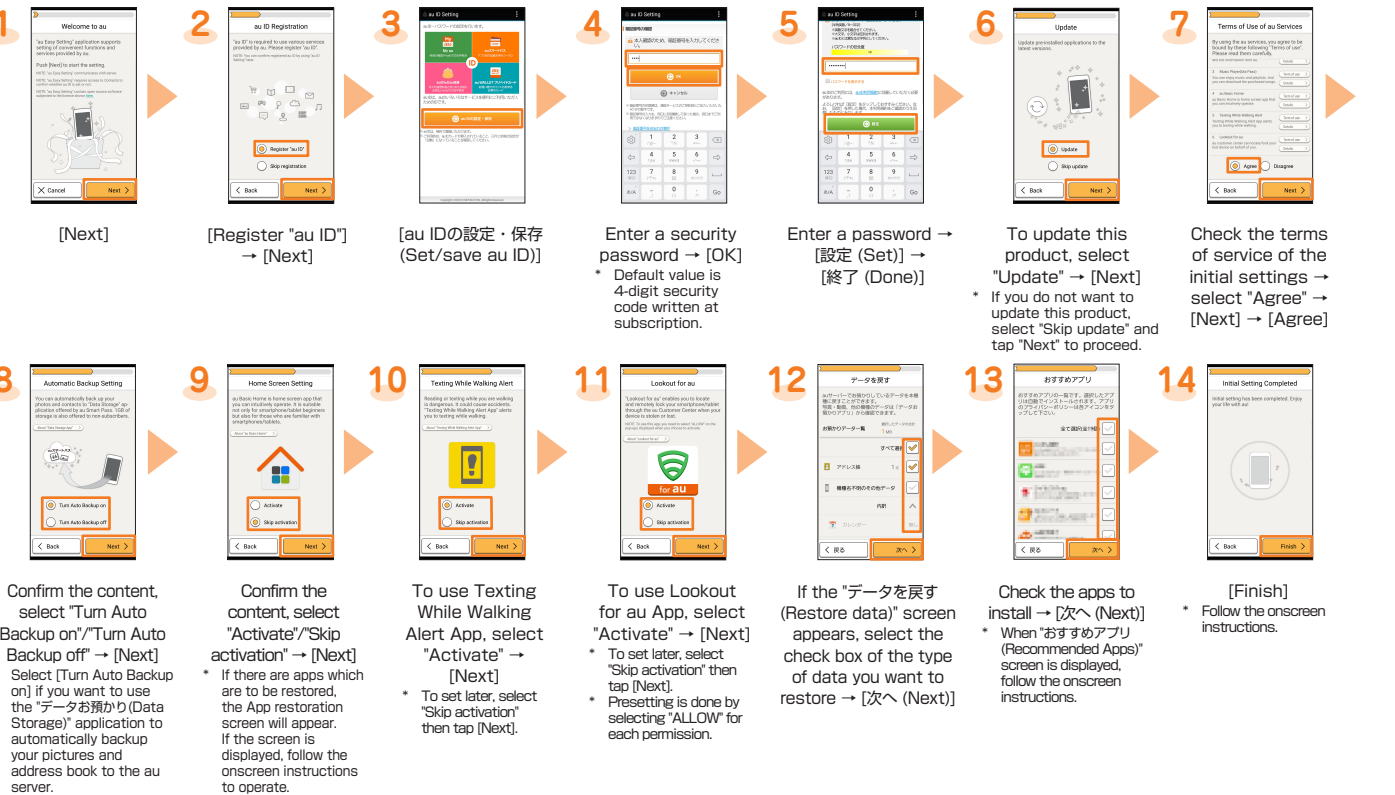
If it is ready to use this product, set up completion screen appears.



STEP 5: au Easy Setting

When you have registered an au ID, you can use various au services including "au Simple Payment Service" which offers you a simple way to purchase applications from "au Smart Pass" and "Google Play". Create new au ID with this product or use your au ID.

- The same "au ID" as another user's cannot be registered.
- You can still setup au services after completing initial settings by the following steps. On the home screen, [基本フォルダ (Basic folder)] → [Settings] → [au Settings Menu] → [au Easy Setting].



Mail settings

Initial Setup of E-mail

- To use E-mail (@ezweb.ne.jp), subscription to LTE NET is required. If you did not subscribe it when you purchased the product, contact an au shop or Customer Service Center.
- For model change from au phone, you can continue to use the E-mail address that is used on the former model by making initial settings.
 - Before performing this procedure, turn off the Wi-Fi® function.
- On the home screen, [E-mail]
 - Initial settings are complete, E-mail address appears → [閉じる (Close)]
- If "KDDI Eメールアプリへようこそ！ (Welcome to the E-mail application)" screen appears, confirm the content and tap [Close].
 - If "Eメールアプリ利用上の確認事項 (Confirmation matter when using the E-mail application)" screen appears, confirm the content and tap [同意する (Agree)] → [完了 (Finish)].

Changing your E-mail address

- Although E-mail address is automatically decided by performing Initial settings, the E-mail address can be changed.
- On the home screen, [E-mail]
 - [MENU]
 - [Change Address/Setting Filter]
 - [Eメールアドレスの変更へ (To Change E-mail address)]
 - Enter the security code → [送信 (Send)]
 - Confirm the contents → [承諾する (Accept)]
 - Enter E-mail address → [送信 (Send)]
 - [OK] → [閉じる (Close)]

Checking E-mail address

- On the home screen, [E-mail]
- [MENU]
- [E-mail information]
- E-mail address appears

Basic Manual application

Downloading "Basic Manual application"

- On the home screen, [基本フォルダ (Basic folder)] → [Basic Manual]
- [UPDATE] → [ACCEPT]

Using "Basic Manual application"

- On the home screen, [基本フォルダ (Basic folder)] → [Basic Manual]
- The Basic Manual cover is displayed.

Making a call

Calling by direct input

- On the home screen, [Dial]
 - Enter a phone number
 - [☎]
- To dial using call log, in step 2, tap the "LOG" tab to select a log you want to call, then tap "☎".
 - To return to the keypad screen from the "LOG" tab, tap "☎".

Calling from the contacts

- On the home screen, flick up or flick down → [Contacts]
- Tap a contact to call
- [☎]

Calling overseas (au International Call Service)
You can make international calls without any special procedure from the product.
To call overseas, on the keypad screen, enter an access code, country code, area code*, and the phone number of the other party, then tap "☎".
* If the area code starts with "0", dial it without including the "0". (There are some exceptions such as Italy).

Receiving a call

- Drag/slide "☎" out of the circle
 - Your call will begin
 - To end the call, [☎]
- To reject a call, in step 1, drag/slide "☎" out of circle. When a call rejected, the caller hears the guidance.
 - To answer with an answering message, slide "SEND MESSAGE" up → [Answering message] in step 1.
- When you receive a call while using the product, a pop-up screen will appear. To answer the call, tap [ANSWER].
 - Tap [DECLINE] on the pop-up screen to reject a call.
 - On the pop-up screen, tap [SEND MESSAGE] → [Answering message] to answer the call with an answering message.

Importing/Exporting contacts

You can transfer contacts data in the previously used au Nano IC Card 04 or microSD memory card.

- On the home screen, flick up or flick down → [Contacts]
 - [☰] → [Manage contacts] → [Import/Export contacts]
 - [IMPORT] → [Internal storage]/[SD card]/[SIM card]
 - Contacts list
 - [Phone]/[Synchronized account] → [IMPORT]
* Contacts data is imported.
- To export contacts, in step 3, [EXPORT] → [Internal storage]/[SD card]/[SIM card].
 - You can export up to 50 contacts to the au Nano IC Card 04.

How to transfer data from the au Settings Menu

You can restore/store data from your previous au phone to this product using a microSD memory card or au servers.

- If you restore or store data using au server, store the data using your previous au phone to the au server in advance. You need to set up an au ID to use the au server. (If your previous au phone does not have the au Settings Menu, use the Friends Note app or au Cloud app.)
- If you restore data using microSD memory card, save the data using your previous au phone to a microSD memory card. (If your previous au phone does not have the au Settings Menu, use the au backup app.)

- On the home screen, [基本フォルダ (Basic folder)] → [Settings]
 - [au Settings Menu]
 - [Data Transfer]
 - [機種変更はこちら (Model changing is here)] and perform data migration according to the screen guidance.
- If you want to store your pictures and address book (contacts) automatically to the au server using "データお預かり (Data Storage)" app, you can set up by following procedure.
- On the home screen, [基本フォルダ (Basic folder)] → [Settings] → [au Settings Menu] → [Backup Setting]

Viewing/playing data

View/play images or videos saved in the phone memory or a microSD memory card.

- On the home screen, flick up or flick down → [Gallery]
- Select an album
* When a screen other than album list is displayed, go to step 3.
- Select data to view
* To play video, tap [▶].

How to back up data to a PC

How to back up data to a PC using Smart Switch

Smart Switch is an app for transferring data. There are two versions of Smart Switch: Smart Switch for PC/Mac and Smart Switch for mobile. By using the Smart Switch for PC, you can back up data to and restore data from a PC.

You can download "Smart Switch" from Smart Switch homepage. For details of downloading and the way to use, refer to Smart Switch homepage.
<http://www.samsung.com/smartswitch/> (in Japanese only)

You can only forward content that you own or have the rights to. Samsung Electronics Co., Ltd. takes no responsibility for any infringements on the Copyright Law.

Setting screen brightness and screen timeout

Setting screen brightness

- On the home screen, [基本フォルダ (Basic folder)] → [Settings]
- [Display]
- Drag the "Brightness" slider to the left or right to adjust the brightness

Setting screen timeout

- On the home screen, [基本フォルダ (Basic folder)] → [Settings]
- [Display]
- [Screen timeout]
- Tap the time to keep the screen on for