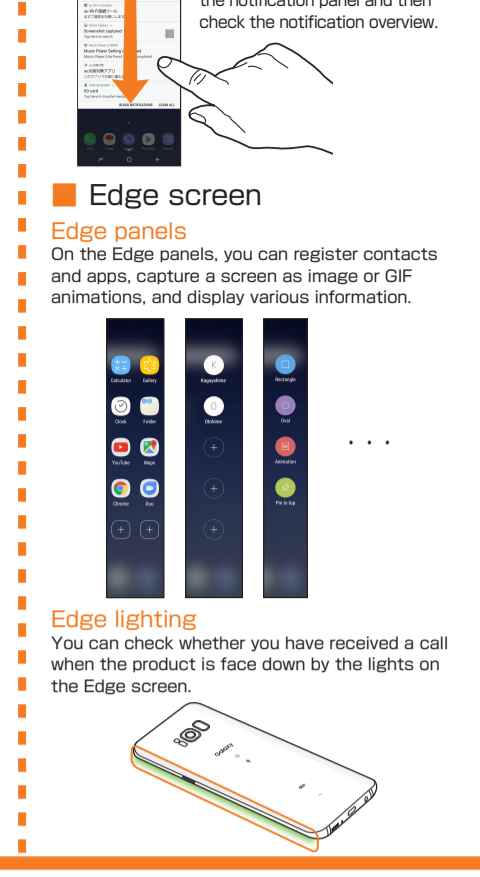


Thank you for buying the Galaxy S8+ (simply called the "product"). In this guide, settings and precautions for using the product are described. For basic operations, refer to the "Basic Manual" or the "Basic Manual application" installed on the product. Company names and product names referred to in this manual are trademarks or registered trademarks of respective companies.

- Basic operation**
Describes the basic operations and names of parts.
- Initial settings**
Describes how to configure settings when turning on the power for the first time.
- Mail settings**
Make initial settings to use E-mail (@ezweb.ne.jp).
- Basic Manual application**
Downloads and uses the "Basic Manual application".
- Making a call**
Describes how to make a call.
- Receiving a call**
Describes how to receive a call.
- Importing/Exporting contacts**
Describes how to import and export contacts to this product using the au Nano IC Card O4 or the microSD memory card.
- How to transfer data from the au Settings Menu**
Describes how to restore and store data into this product from the previously used au phone.
- Viewing/playing data**
Describes how to view/play images or video data.
- How to back up data to a PC**
Describes how to back up data to a PC.
- Setting screen brightness and screen timeout**
Describes how to set screen brightness and screen timeout.

Sold by: KDDI CORPORATION, OKINAWA CELLULAR TELEPHONE COMPANY
Imported by: SAMSUNG ELECTRONICS JAPAN Co., Ltd.
Manufactured by: Samsung Electronics Co., Ltd.
April 2017, 1st Edition



Touch panel operations

Tap
Lightly touch the screen and then immediately release your finger.

Slide
If the displayed item does not fit within the screen, lightly touch and trace to the desired direction.

Pinch
Touch the screen with two fingers and widen (pinch-out) or narrow (pinch-in) the fingers' distance.

Touch and hold
Keep touching an item etc. with your finger.

Flick (Swipe)
Quickly move (flick) your finger up, down, right, or left.

Drag
Keep touching an item or icon, trace it to the desired direction.

Selecting item

To select displayed item or icon, tap the screen directly with your finger.

Displaying menu

There are a few methods to display a menu, by tapping " : " or by touching and holding an entry field or item.

Switch setting

When checkbox, radio button or ON/OFF switch appears at side of setting item, tap check box, radio button or ON/OFF switch to switch the ON/OFF of the setting.

Icon	Description
<input checked="" type="checkbox"/>	Setting is On.
<input type="checkbox"/>	Setting is Off.

Configuring the app's permissions

When you access a function or information on the terminal for the first time, a confirmation screen will appear requesting you to permit the access. If a confirmation screen appears, read through the displayed information and tap either "DENY" or "ALLOW".

- A screen explaining the permission may be displayed for some apps/functions. Or, a confirmation screen may appear multiple times and or be displayed differently. Check the displayed information carefully and follow the on-screen instructions.
- If you do not select "ALLOW", you may be unable to activate the app/function or the function may be restricted.
- Descriptions on the contents displayed on the confirmation screen(s) may have been omitted in this manual.

Character entry

To enter characters, tap character entry field to display keyboard and then tap each key.

Software keyboard
Use "3x4 Keyboard" or "QWERTY Keyboard".

Tap " ", and in the displayed menu, tap "3x4 Keyboard ⇄ QWERTY Keyboard" to toggle between "3x4 Keyboard" and "QWERTY Keyboard". If the " " is not displayed, press and hold the buttons that are located here in the screenshots and select " ".

Flick input
In "3x4", entering candidates for flick input appears as shown when you touch and hold a key. Flick to the direction of character to enter.

(Flick input)

Flick up [Y] Touch a key
Flick left [X] Flick right [Z]
Flick down [9]

* For Normal Flick

Initial settings

The first time the product turns ON, the initial setting screen appears automatically. Follow the guidance to make the settings.

- Depending on the settings, setting contents and displays may differ.

STEP START

1. Tap [OK] on the language selection screen.
2. Tap [START] on the Welcome screen.

[日本語(Japanese)] → [English] → [OK]

[START]

- When message screen from Google is displayed, confirm the contents and tap "ACCEPT".
- To change the language after it has been initially set, [基本フォルダ(Basic folder)] → [設定(Settings)] → [一般管理 (General management)] → [言語とキーボード (Language and input)] → [言語 (Language)] → [言語を追加 (Add language)] → Select language you want to use → [標準に設定 (SET AS DEFAULT)].

STEP 1: Wireless LAN (Wi-Fi) function setting

Use your home wireless LAN (Wi-Fi) or public wireless LAN to connect to the Internet.

- Password (security key) is set on access point. Check in advance.

1. Tap Wi-Fi network to connect.
2. Enter a password (security key) → [CONNECT] → [NEXT] later.

- If an access point device supports WPS Push button system, in step 1, [ADVANCED] → [WPS push button], and press WPS button on the access point device within 2 minutes to connect Wi-Fi network.
- If an access point device supports WPS PIN code system, in step 1, [ADVANCED] → [WPS PIN entry], and enter PIN code on the access point device to connect Wi-Fi network.

STEP 2: Check the terms and conditions

1. Tap "Learn more" from each agreement → confirm the content → [<] → after confirming all the contents tap [Agree to all] → [NEXT]

Tap "Learn more" from each agreement → confirm the content → [<] → after confirming all the contents tap [Agree to all] → [NEXT]

STEP 3: Google setting

Set up Google account to use Google applications such as "Gmail", and "Google Play". Gmail address "(User name)@gmail.com" is automatically created by user name set in Google account.

1. Add your account
2. Enter your "First name" and "Last name" → [NEXT]
3. Enter your birthday and gender → [NEXT]
4. Enter your user name → [NEXT]
5. Enter a password → reenter the password → [NEXT]
6. Enter a phone number in case you forget your password → [NEXT]
7. If the precautions screen related to confirming your phone number appears, confirm the content → [VERIFY]
8. Confirm the content → [I AGREE]
9. [NEXT]
10. Confirm the content → [NEXT]
11. Set whether to protect your phone

- To set, select "Set up Face Recognition", "Set up Fingerprint Scanner", "Set up Iris Scanner" or "Set up PIN, pattern or password".
- To not set, select "No, thank you" → [SKIP] → [SKIP ANYWAY]

STEP 4: Set up is complete

If it is ready to use this product, set up completion screen appears.

1. Set Galaxy account as required
2. Set whether to display screen layout or weather forecast on home screen → [FINISH]

Set Galaxy account as required
* Tap [SKIP] → [SKIP] here.

Set whether to display screen layout or weather forecast on home screen → [FINISH]

STEP 5: au Easy Setting

When you have registered an au ID, you can use various au services including "au Simple Payment Service" which offers you a simple way to purchase applications from "au Smart Pass" and "Google Play". Create new au ID with this product or use your au ID.

- The same "au ID" as another user's cannot be registered.
- You can still setup au services after completing initial settings by the following steps. On the home screen, [基本フォルダ (Basic folder)] → [Settings] → [au Settings Menu] → [au Easy Setting].

1. [Next]
2. [Register "au ID" → [Next]
3. [au IDの設定・保存 (Set/save au ID)]
4. Enter a security password → [OK]
5. Enter a password → [設定 (Set)] → [終了 (Done)]
6. To update this product, select "Update" → [Next]
7. Check the terms of service of the initial settings → select "Agree" → [Next] → [Agree]
8. Confirm the content, select "Turn Auto Backup on"/"Turn Auto Backup off" → [Next]
9. Confirm the content, select "Activate"/"Skip activation" → [Next]
10. To use Texting While Walking Alert App, select "Activate" → [Next]
11. To use Lookout for au App, select "Activate" → [Next]
12. If the "データを戻す (Restore data)" screen appears, select the check box of the type of data you want to restore → [次へ (Next)]
13. Check the apps to install → [次へ (Next)]
14. [Finish]

- When "おすすめアプリ (Recommended Apps)" screen is displayed, follow the onscreen instructions.
- Follow the onscreen instructions.

Mail settings

Initial Setup of E-mail

To use E-mail (@ezweb.ne.jp), subscription to LTE NET is required. If you did not subscribe it when you purchased the product, contact an au shop or Customer Service Center.

- For model change from au phone, you can continue to use the E-mail address that is used on the former model by making initial settings.
- Before performing this procedure, turn off the Wi-Fi® function.



On the home screen, [E-mail] Initial settings are complete, E-mail address appears → [閉じる (Close)]

- If "KDDI Eメールアプリへようこそ！ (Welcome to the E-mail application)" screen appears, confirm the content and tap [Close].
- If "Eメールアプリ利用上の確認事項 (Confirmation matter when using the E-mail application)" screen appears, confirm the content and tap [同意する (Agree)] → [完了 (Finish)].

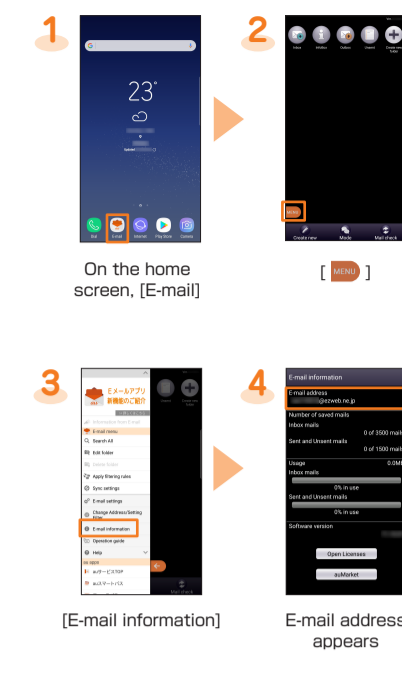
Changing your E-mail address

Although E-mail address is automatically decided by performing Initial settings, the E-mail address can be changed.



On the home screen, [E-mail] [閉じる (Close)] [Change Address/Setting Filter] [Eメールアドレスの変更へ (To Change E-mail address)] [OK] → [閉じる (Close)] Enter the security code → [送信 (Send)] Confirm the contents → [承諾する (Accept)] Enter E-mail address → [送信 (Send)] [OK] → [閉じる (Close)]

Checking E-mail address



On the home screen, [E-mail] [E-mail information] E-mail address appears

Basic Manual application

Downloading "Basic Manual application"



On the home screen, [基本フォルダ (Basic folder)] → [Basic Manual]

[UPDATE] → [ACCEPT]

Using "Basic Manual application"

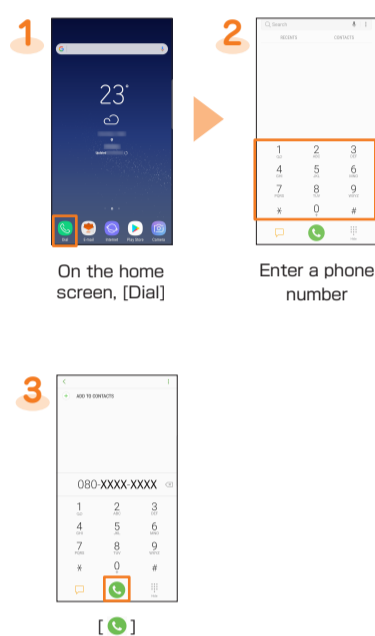


On the home screen, [基本フォルダ (Basic folder)] → [Basic Manual]

The Basic Manual cover is displayed.

Making a call

Calling by direct input

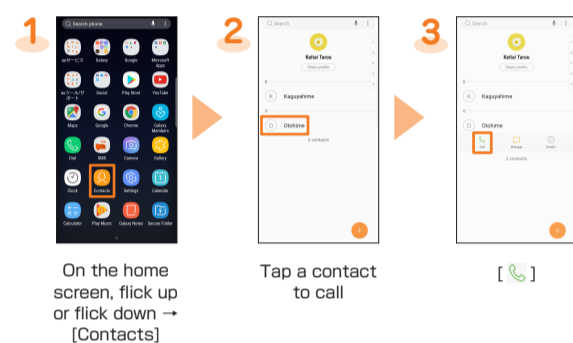


On the home screen, [Dial]

Enter a phone number

- To dial using call log, in step 2, tap the "LOG" tab to select a log you want to call, then tap "☎".
- To return to the keypad screen from the "LOG" tab, tap "📞".

Calling from the contacts



On the home screen, flick up or flick down → [Contacts]

Tap a contact to call

Calling overseas (au International Call Service)
You can make international calls without any special procedure from the product.
To call overseas, on the keypad screen, enter an access code, country code, area code*, and the phone number of the other party, then tap "☎".
* If the area code starts with "0", dial it without including the "0". (There are some exceptions such as Italy).

Receiving a call



Drag/slide "☎" out of the circle

Your call will begin

To end the call, [📞]

- To reject a call, in step 1, drag/slide "☎" out of circle. When a call rejected, the caller hears the guidance.
- To answer with an answering message, slide "SEND MESSAGE" up → [Answering message] in step 1.

- When you receive a call while using the product, a pop-up screen will appear. To answer the call, tap [ANSWER].
- Tap [DECLINE] on the pop-up screen to reject a call.
- On the pop-up screen, tap [SEND MESSAGE] → [Answering message] to answer the call with an answering message.

Importing/Exporting contacts

You can transfer contacts data in the previously used au Nano IC Card O4 or microSD memory card.



On the home screen, flick up or flick down → [Contacts]

[☰] → [Manage contacts] → [Import/Export contacts]

[IMPORT] → [Internal storage]/[SD card]/[SIM card]

Select contacts data to import → [DONE]

[Phone]/[Synchronized account] → [IMPORT]

- * If there is only one contact data saved, go to step 5.
- * Contacts data is imported.
- To export contacts, in step 3, [EXPORT] → [Internal storage]/[SD card]/[SIM card].
- You can export up to 50 contacts to the au Nano IC Card O4.

How to transfer data from the au Settings Menu

You can restore/store data from your previous au phone to this product using a microSD memory card or au servers.

- If you restore or store data using au server, store the data using your previous au phone to the au server in advance. You need to set up an au ID to use the au server. (If your previous au phone does not have the au Settings Menu, use the Friends Note app or au Cloud app.)
- If you restore data using microSD memory card, save the data using your previous au phone to a microSD memory card. (If your previous au phone does not have the au Settings Menu, use the au backup app.)



On the home screen, [基本フォルダ (Basic folder)] → [Settings]

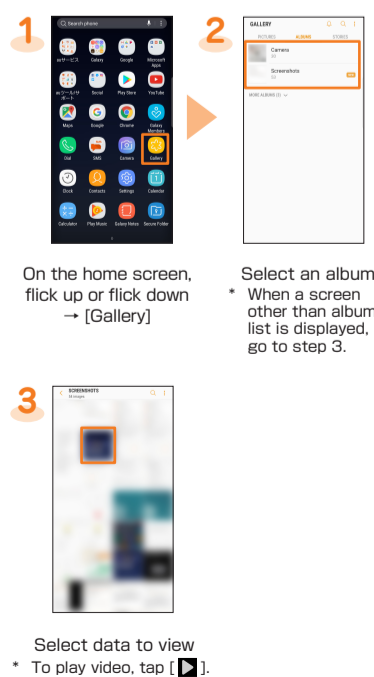
[au Settings Menu]

[Data Transfer]

If you want to store your pictures and address book (contacts) automatically to the au server using "データお預かり (Data Storage)" app, you can set up by following procedure.
● On the home screen, [基本フォルダ (Basic folder)] → [Settings] → [au Settings Menu] → [Backup Setting]

Viewing/playing data

View/play images or videos saved in the phone memory or a microSD memory card.



On the home screen, flick up or flick down → [Gallery]

Select an album
* When a screen other than album list is displayed, go to step 3.

Select data to view
* To play video, tap [▶].

How to back up data to a PC

How to back up data to a PC using Smart Switch

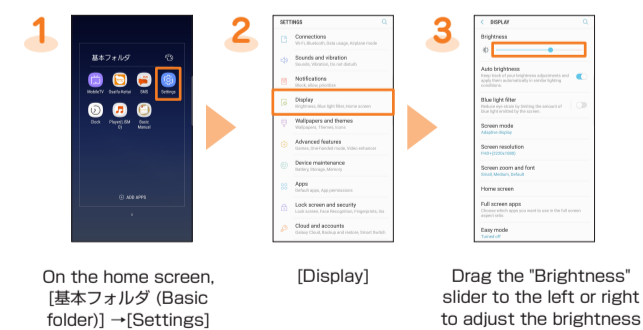
Smart Switch is an app for transferring data. There are two versions of Smart Switch: Smart Switch for PC/Mac and Smart Switch for mobile. By using the Smart Switch for PC, you can back up data to and restore data from a PC.

You can download "Smart Switch" from Smart Switch homepage. For details of downloading and the way to use, refer to Smart Switch homepage. <http://www.samsung.com/smartswitch/> (in Japanese only)

You can only forward content that you own or have the rights to. Samsung Electronics Co., Ltd. takes no responsibility for any infringements on the Copyright Law.

Setting screen brightness and screen timeout

Setting screen brightness

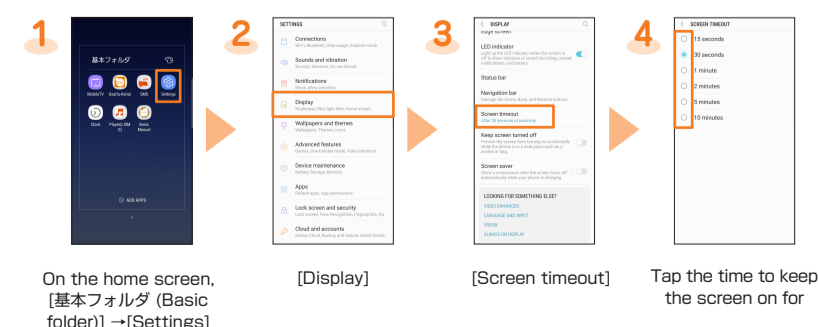


On the home screen, [基本フォルダ (Basic folder)] → [Settings]

[Display]

Slide the "Brightness" slider to the left or right to adjust the brightness

Setting screen timeout



On the home screen, [基本フォルダ (Basic folder)] → [Settings]

[Display]

[Screen timeout]

Tap the time to keep the screen on for