

isai Beat Setting Guide

Thank you for purchasing the "isai Beat" (simply called the "product" from here on). This "Setting Guide" describes the basic operations and initial settings for using the product.

For descriptions on various functions, refer to "Basic Manual" or "User Guide 取扱説明書 詳細版 (Full Instruction Manual)" (Japanese) on the au website. Before using the product, be sure to read the "Notes on Usage" to ensure correct and safe use.

All other company names and product names are registered trademarks or trademarks of respective companies referred to in this manual.

The ® marks and TM marks may be omitted in this manual.

Sold by : KDDI CORPORATION, OKINAWA CELLULAR TELEPHONE COMPANY

Imported by : LG Electronics Japan, Inc.

Manufactured by : LG Electronics Inc.

October 2016, 1st Edition

MBM65775903(1.0)

Learning the Basic Operations

Basic operations of the keys

Power key (rear)

- Power ON
Press and hold the power key.
- Power OFF
Press and hold the power key → Select [Power off] → [POWER OFF].
- Sleep mode
Press the power key in operation to switch to sleep mode.
- Cancel sleep mode
Press the power key in sleep mode to display the lock screen.

Display (Touch panel)

Directly touch an item or button displayed on the screen to operate.

Task button

Check running applications.
Press and hold an app while it is running to start up multi-windows.

Home button

Use it to display the Home screen.

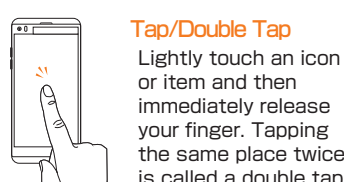
Back button

Returns to the previous screen.

- Unlocking the screen
Swipe on the lock screen.

Basic operations of the touch panel

The display of the product is a touch panel and you can touch directly with your finger to operate.



Tap/Double Tap
Lightly touch an icon or item and then immediately release your finger. Tapping the same place twice is called a double tap.



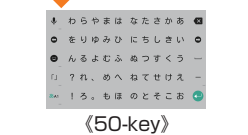
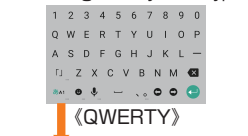
Touch and hold
Keep touching the screen.

Basic operations to input characters

This product uses the software keyboard displayed at the bottom of the screen to enter characters.
Tap the keys on the screen to enter characters.



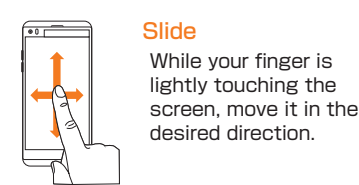
Switching the keyboard type



Flick input



Flick guide



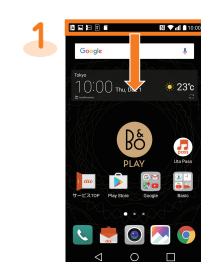
Slide
While your finger is lightly touching the screen, move it in the desired direction.



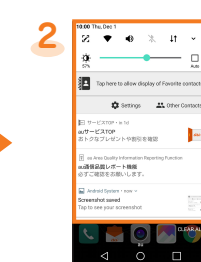
Flick (Swipe)
Quickly move (flicking) your finger up, down, right, or left.

How to read the notification panel

When a notification icon appears on the left side of the status bar, slide the status bar down to open the notification panel to check the notification or launch the application.



Slide down the status bar



The notification panel appears.

Setting Application Authority

When activating the applications/functions to access the functions or information of the product for the first time, the confirmation screen appears to request the permission for the access authority.
When the confirmation screen appears, confirm the content and tap "DENY" or "ALLOW".

- The explanation screen may be displayed depending on the application/function. Also, the confirmation screen may be displayed several times or the display may be different. Carefully check the displayed content, follow the onscreen instructions.
- If the application authority is not allowed, applications/functions may not be activated or using functions may be restricted.
- In this manual, description of the confirmation screens may be omitted.

Initial Settings: STEP1

This section describes the initial settings screen that appears when you turn on the power for the first time.

Starting initial settings

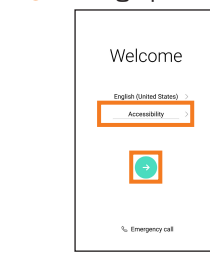
Changing the language



[日本語 (日本)] → select language → []

- Once you select your desired language, the language for the initial settings screen also changes. From here on, follow the onscreen instructions.

Setting up Accessibility



After switching to the English display, [Accessibility] → review the precautions, [YES] → set Accessibility → [] → []

- If the language was not switched via the initial settings, switch the language via the following procedures.
On the Home screen, [基本機能 (Basic)] → [設定 (Settings)] → [一般 (General)] tab → [言語とキーボード (Language & keyboard)] → [言語 (Language)] → [言語の追加 (ADD LANGUAGE)] → [English] → drag "English (United States)" and drop it at the very top.

The folder names will not be changed from the language of the initial settings. Convert the folder names contained in "Setting Guide" (this manual), "Basic Manual", "Notes on Usage" into Japanese as per the following and operate.

English	Japanese
Basic	基本機能
Tools	ツール
Reccomended	おすすめアプリ
Support	サポート

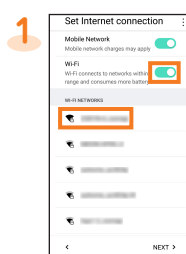
Initial Settings: STEP2

Setting Wireless LAN (Wi-Fi®)

By using the wireless LAN (Wi-Fi®) function, you can access to the Internet using a wireless LAN environment built in your home or a public wireless LAN environment away from home.
When setting the wireless LAN (Wi-Fi®) as described in this guide, you need to be in an environment where the radio waves can be received from the wireless LAN device or public wireless LAN that you want to access to. Check the following information before setting the wireless LAN (Wi-Fi®) function.

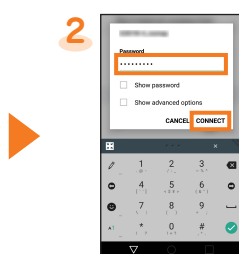
SSID	The name set for the wireless LAN device or public wireless LAN service that you are connecting to
Password	The password for connecting to the wireless LAN device or public wireless LAN service

- Connection to all public wireless LAN services is not guaranteed.
- You may need a separate contract with a service provider to use some public wireless LAN services.
- Enabling the wireless LAN (Wi-Fi®) function uses a lot of battery power. We recommend turning off the wireless LAN (Wi-Fi®) function when not using it.



[Wi-Fi] → tap the network that you are connecting to

* If you do not set up, tap [NEXT].



Enter Password → [CONNECT] → confirm the connection → [NEXT]

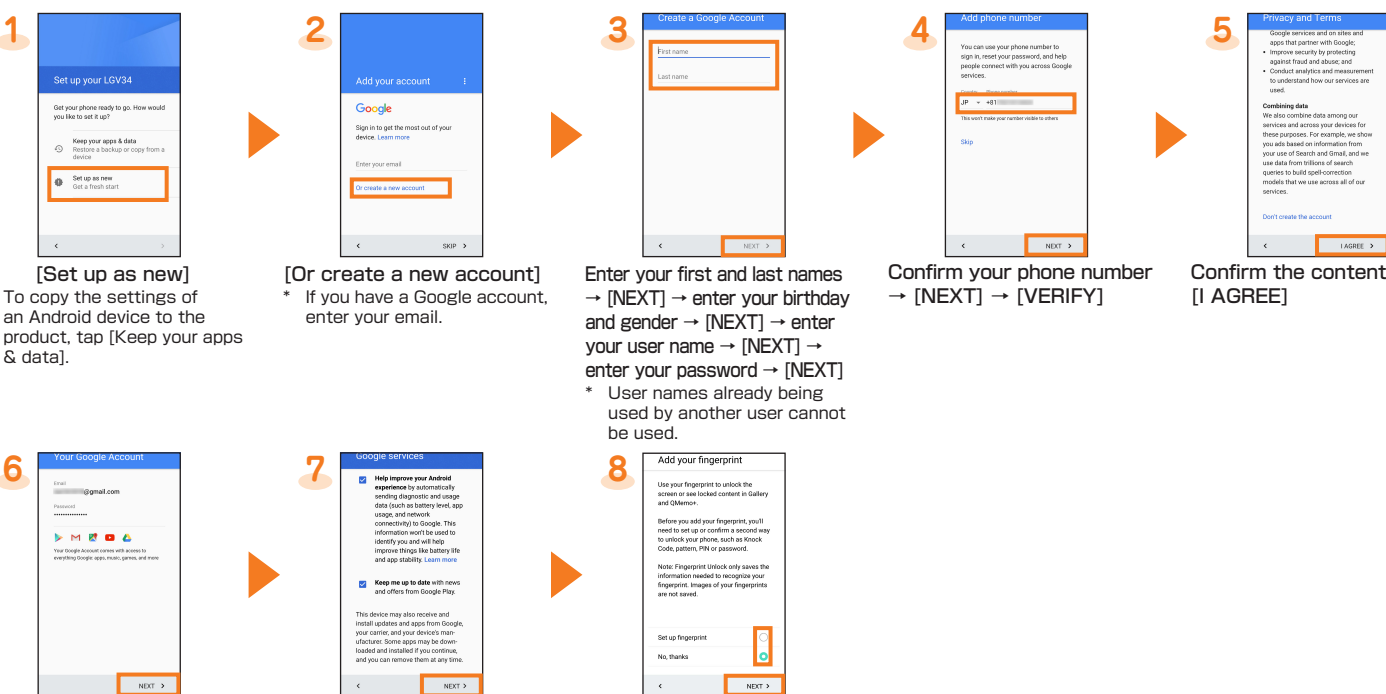
* This step is not required if you select a wireless LAN (Wi-Fi®) network without security settings.

Initial Settings: STEP3

Setting up Google account

You can use online services provided by Google, such as Gmail and Google Play, by setting up a Google account.
This section describes how to set up an account on the initial settings screen that appears when you turn on the power for the first time.

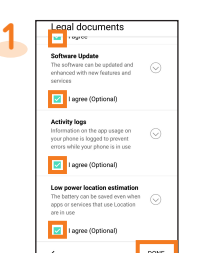
User name	Register your Google account (user ID) and the characters that you want to use as your mail address. You can register a desired name, but a name already registered by another user cannot be set.
Password	Register password for the Google account.



- [Set up as new]
To copy the settings of an Android device to the product, tap [Keep your apps & data].
- [Or create a new account]
If you have a Google account, enter your email.
- Enter your first and last names → [NEXT] → enter your birthday and gender → [NEXT] → enter your user name → [NEXT] → enter your password → [NEXT]
User names already being used by another user cannot be used.
- Confirm your phone number → [NEXT] → [VERIFY]
- Confirm the contents → [I AGREE]
- [NEXT]
- Check the details of Google services → [NEXT]
- Set whether to install fingerprint
To install fingerprint, select [Set up fingerprint] and [NEXT]
To not install fingerprint, select [No, thanks] and [NEXT] → [SKIP ANYWAY]

Initial Settings: STEP4

Other settings



Check legal documents → place check marks on "I agree" and "I agree (Optional)" → [DONE]

au Easy Setting

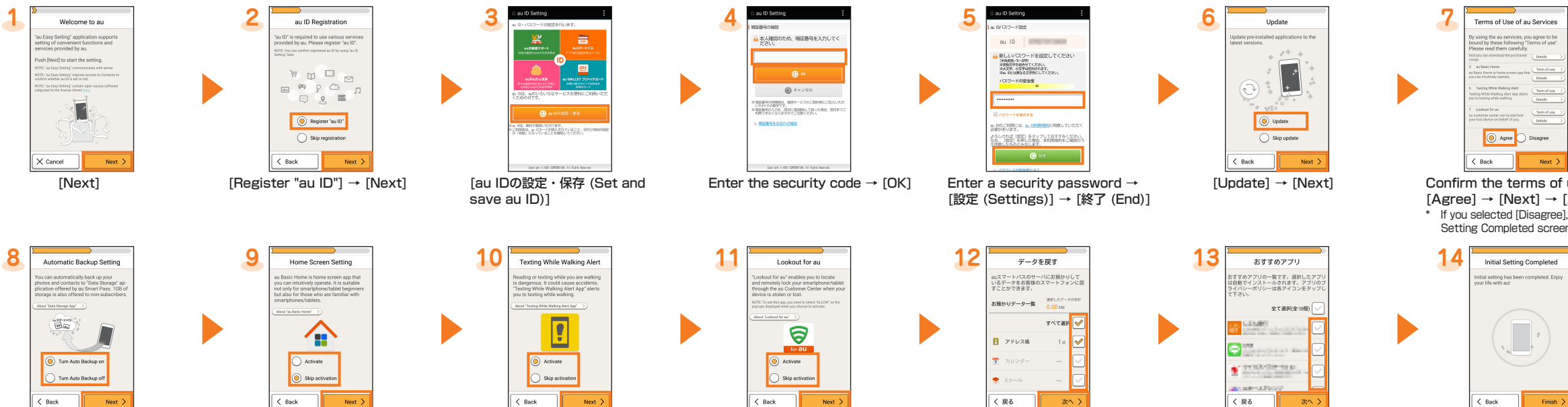
Setting au ID

You can setup convenient au functions and services.
This section describes how to set up an au ID on the initial settings screen that appears when you turn on the power for the first time. The settings can be changed with the "au ID Setting" application.

au ID*	Register your au phone number or any other character string as an au ID.
au ID password	Register password for using au ID.

- The same "au ID" as another user's cannot be registered.

After completing initial settings, you can also setup au services on the Home screen by tapping [Basic] → [Settings] → "General" tab → [au Settings Menu] → [au Easy Setting].



- [Next]
- [Register "au ID"] → [Next]
- [au IDの設定・保存 (Set and save au ID)]
- Enter the security code → [OK]
- Enter a security password → [設定 (Settings)] → [終了 (End)]
- [Update] → [Next]
- Confirm the terms of use → [Agree] → [Next] → [Agree]
If you selected [Disagree], the au Easy Setting Completed screen will appear.
- Confirm the details and select [Turn Auto Backup on]/[Turn Auto Backup off] → [Next]
- Confirm the details and select [Activate]/[Skip activation] → [Next]
If there are apps which are to be restored, the App restoration screen will appear. If the screen is displayed, follow the onscreen instructions to operate.
- When using Texting While Walking Alert App, [Activate] → [Next]
If you do not use it, tap [Skip activation] → [Next].
- To use Lookout for au, [Activate] → [Next]
If you do not use it, tap [Skip activation] → [Next].
- Place checkmarks on the data you want to restore → [次へ (Next)]
If there is no data to be restored, this screen will not be displayed.
- Place checkmarks on the application to be installed → [次へ (Next)]
- [Finish]
When a different screen from the above appears, follow the displayed screen.

E-mail Settings

E-mail (@ezweb.ne.jp) is a service that enables you to exchange e-mails with other cell phones, which support e-mail, and with PCs. Your e-mail address is decided automatically after the initial settings. The e-mail address in the initial settings can be changed.

Initial Settings

1 On the Home screen, []

2 Confirm e-mail address → [閉じる (Close)]

- If the confirmation screen for e-mail application appears, check the content and follow the onscreen instructions.

Confirming your e-mail address

1 On the Home screen, [] → [E-mail information]

2 Your e-mail address appears in the E-mail address field.

* The initial setting of the e-mail cannot be performed via Wi-Fi® communications.

Changing your e-mail address

1 On the E-mail screen, [] → [Change Address/Setting Filter]

2 [Eメールアドレスの変更 (To change e-mail address)]

3 Enter the security code → [送信 (Send)]

4 Confirm the contents → [承諾する (I accept)]

5 Enter e-mail address → [送信 (Send)]

6 [OK]

7 [閉じる (Close)]

"Basic Manual application"

Downloading "Basic Manual application"

1 On the Home screen, [Support] → [Basic Manual]

2 [UPDATE] → [CONTINUE]

- If confirmation screens are displayed, follow the onscreen instructions to operate.

Using "Basic Manual application"

1 On the Home screen, [Support] → [Basic Manual]

2 Confirm contents displayed → []

3 The Basic Manual cover is displayed.

* Packet communications fees are charged for downloading the "Basic Manual application" (no charges for Wi-Fi® connections).

Making Calls

Entering a phone number to make a call

1 On the Home screen, []

2 Enter a phone number → []

Calling from Contacts

1 On the phone screen, tap "Contacts" tab

2 Tap the other party to be called

- Tap [] to skip the contact details screen and directly make a call.

3 On the contact details screen, tap a phone number

Calling from Call logs

1 On the phone screen, tap "Call logs" tab

2 Tap the other party to be called

3 Tap a phone number

Receiving Calls

You can receive a call in the following steps.

- * "Receive an incoming call over the operation screen" is set to "ON" in Sync Call settings by default. This section describes with the default setting mainly.

1 [Accept] during an incoming call

2 The call starts.

3 [End] to end the call

Receiving a call during sleep mode

Make calls via the same procedures when the Sync Call is OFF, and also when the "Receive an incoming call over the operation screen" in the Sync Call settings is "OFF".

1 Flick (swipe) "Answer" in any direction during an incoming call

2 The call starts.

3 [End] to end the call

Rejecting an incoming call

When you reject a call, the caller is informed that there is no response.

1 [Decline] during an incoming call

Receiving calls in the Second screen

1 Flick (swipe) " " to the right during an incoming call

2 The call starts.

3 When ending a call flick (swipe) " " to the left

Transferring Contacts

You can transfer data from your previous phone to the product using a microSD memory card.

1 Save the contacts (address book) from your previous phone to a microSD memory card, and insert the card into the product

2 On the Home screen, [Basic] → [Contacts]

3 [] → [Manage contacts] → [Import]

- When a contact is not registered, tap [] → [Import] → the import source to proceed to step 5. If a saving location screen appears, select the desired account or location.

4 [SD card] → [OK]

- If a saving location screen appears, select the desired account or location.

5 Place checkmarks on the item to be imported → [IMPORT]

6 [IMPORT]

- When the import is complete, "Contacts imported" appears.

How to Transfer Data from the au Settings Menu

Return or store data from your previously used au phone to this product using a microSD card or the au Smart Pass server.

- You need to setup an au ID to restore or save data using au Smart Pass servers.
- If you use a microSD memory card to restore data, save the data from your previous au phone to a microSD memory card.

How to restore data from the au Settings menu

1 On the Home screen, [Basic] → [Settings]

2 "General" tab → [au Settings Menu]

3 [Data Transfer]

- If the terms of use appears, check the content and follow the onscreen instructions.

4 Select a method for returning data

- You need to setup an au ID to restore data using [auスマートパスのサーバ]から戻す (Restore data from au Smart Pass servers) (data backed up on au Smart Pass servers).

5 When [SDカードから復元する (Restore data from SD card)] is selected

6 Place checkmarks on the data you want to restore → [戻す (Restore)] → [完了 (Done)]

- This screen is displayed if you selected [携帯電話のデータを戻す (Restore mobile phone data)].
- When a confirmation screen appears, follow the onscreen instructions.

7 When [auスマートパスのサーバ]から戻す (Restore data from au Smart Pass servers) is selected

8 Place checkmarks on the data you want to restore → [戻す (Restore)] → [完了 (Done)]

- When a confirmation screen appears, follow the onscreen instructions.

Saving data from au Settings Menu

1 On the Home screen, [Basic] → [Settings]

2 "General" tab → [au Settings Menu]

3 [Data Transfer]

- If the terms of use appears, check the content and follow the onscreen instructions.

4 Select a saving location

- You need to setup an au ID to save data from [auスマートパスのサーバ]に預ける (Save data to au Smart Pass server) (saving data to au Smart Pass servers).

5 When [SDカードに保存する (Saving to SD card)] is selected

6 Place checkmarks on the data to be saved, [預ける (Save)] → [完了 (Done)]

7 When [auスマートパスのサーバ]に預ける (Save data to au Smart Pass server) is selected

8 Place checkmarks on the data to be saved, [預ける (Save)] → confirm the details, follow the instructions on the screen → [完了 (Done)]

- When a confirmation screen appears, follow the onscreen instructions.

If you want to use the "Data Storage App" application to automatically save your photos and contacts to the au Smart Pass server, you can set it up by following the procedure below.

On the Home screen, [Basic] → [Settings] → "General" tab → [au Settings Menu] → [Data Transfer] → place checkmarks on the data to be saved

Reducing Battery Consumption

Using Battery Saver

Set up to switch to Battery Saver Mode automatically when the battery is running low.

1 On the Home screen, [Basic] → [Settings]

2 "General" tab → [Battery & power saving]

3 [] on "Battery saver"

- Confirm the status such battery etc. on "BATTERY INFORMATION".

4 [Turn Battery saver on]

5 Tap timing

Setting Battery saver on timing

1 On the Home screen, [Basic] → [Settings]

2 "General" tab → [Battery & power saving]

3 [Battery saver]

4 [Turn Battery saver on]

5 Tap timing