

au HUAWEI P30 lite

HWV33 Setting Guide

Thank you for purchasing the HUAWEI P30 lite HWV33 (simply called "HWV33" or "product" from here on). This "Setting Guide" describes the initial settings for using the product. For detailed descriptions on various functions, refer to the "Online Manual" (Japanese) or "取扱説明書 詳細版 (Full Instruction Manual)" (Japanese) available on the au homepage. For first-time users of smartphones, the "au かんたんガイド (au Easy Guide)" app that explains how to use this product, is available.

All other company names and product names are registered trademarks or trademarks of respective companies referred to in this manual. The ® marks and TM marks may be omitted in this manual. This manual describes the contents with the Android version 9. Please refer to "Setting Guide" on the au homepage for the latest manual version. https://www.au.com/support/service/mobile/guide/manual/

Sold by: KDDI CORPORATION, OKINAWA CELLULAR TELEPHONE COMPANY  
Imported by: HUAWEI TECHNOLOGIES JAPAN K.K.  
Manufactured by: HUAWEI TECHNOLOGIES CO., LTD.

May 2019, 1st Edition

Using Online Manual

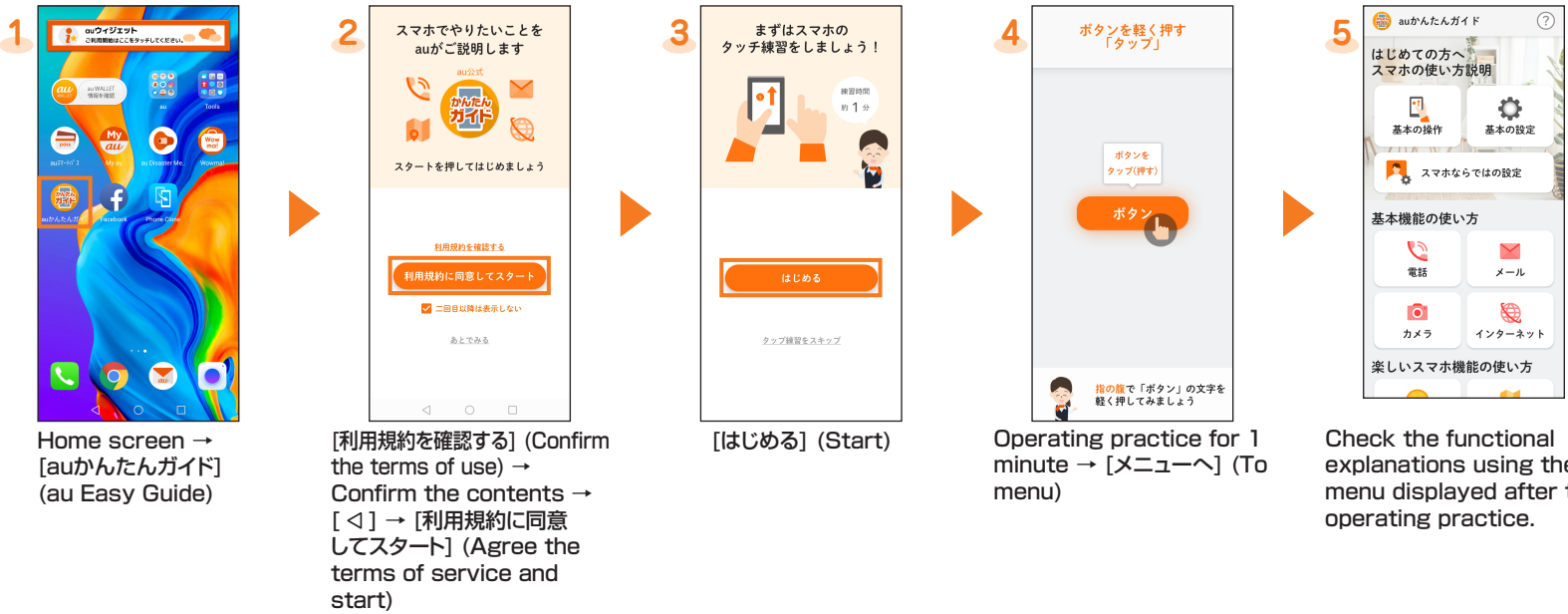
For detailed description on various functions, refer to "Online Manual" on the au homepage. https://www.au.com/online-manual/hwv33/ (in Japanese only)

You can check "Online Manual" by operating the description on the right using this product.



How to use "auかんたんガイド (au Easy Guide)" (Japanese)

For first-time users of smartphones, the app which explains how to use this product, is available.



Initial Settings: STEP 1

Language Settings

This section describes the initial settings screen that appears when you turn on the power.

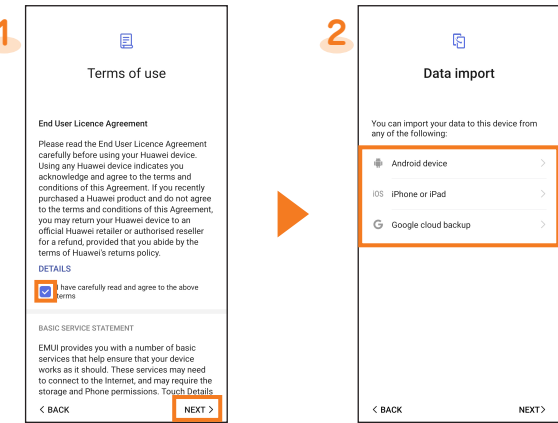
Setting the language



[English] (select the country) → [GET STARTED]  
\* Once you select your desired language, the language for the initial settings screen also changes. From here on, follow the on-screen instructions.

Initial Settings: STEP 2

Terms of use/Data import



[DETAILS] → Confirm the contents and go back to the previous screen → "I have carefully read and agree to the above terms" → [NEXT]

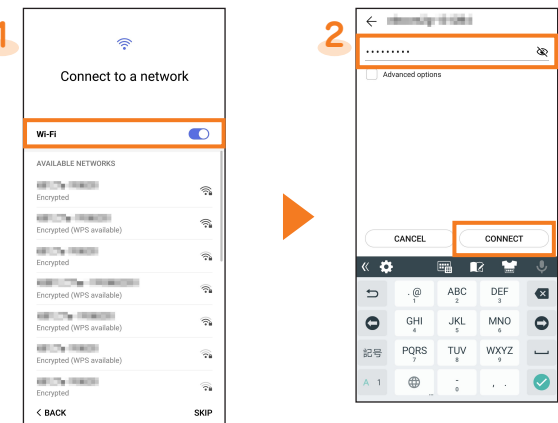
Select the device type → Follow the on-screen instructions.  
\* Tap "NEXT" if you do not import data.

Initial Settings: STEP 3

Wireless LAN (Wi-Fi®) Settings

You can connect to the Internet with the wireless LAN environment at home or public wireless LAN environment using the wireless LAN (Wi-Fi®) function. You need to be in the environment that enables you to connect to the wireless LAN device or the public wireless LAN when you set the wireless LAN (Wi-Fi®) setting according to the way described in this manual. Check the following information before you set the wireless LAN (Wi-Fi®) setting.

SSID	The name set for the wireless LAN device or public wireless LAN service that you are connecting to
Password	The password set to connect the wireless LAN device or public wireless LAN service



Tap "Wi-Fi" to ON → Tap the network to connect  
\* If you do not set up, tap "SKIP".

\* They do not guarantee the connection with all public wireless LAN service.  
\* You may need a separate contract with a service provider to use some public wireless LAN services.  
\* Enabling the wireless LAN (Wi-Fi®) function uses a lot of battery power. We recommend turning off the wireless LAN (Wi-Fi®) function when not using the wireless LAN (Wi-Fi®).

Enter the password → [CONNECT]  
→ Check the connection → [NEXT]

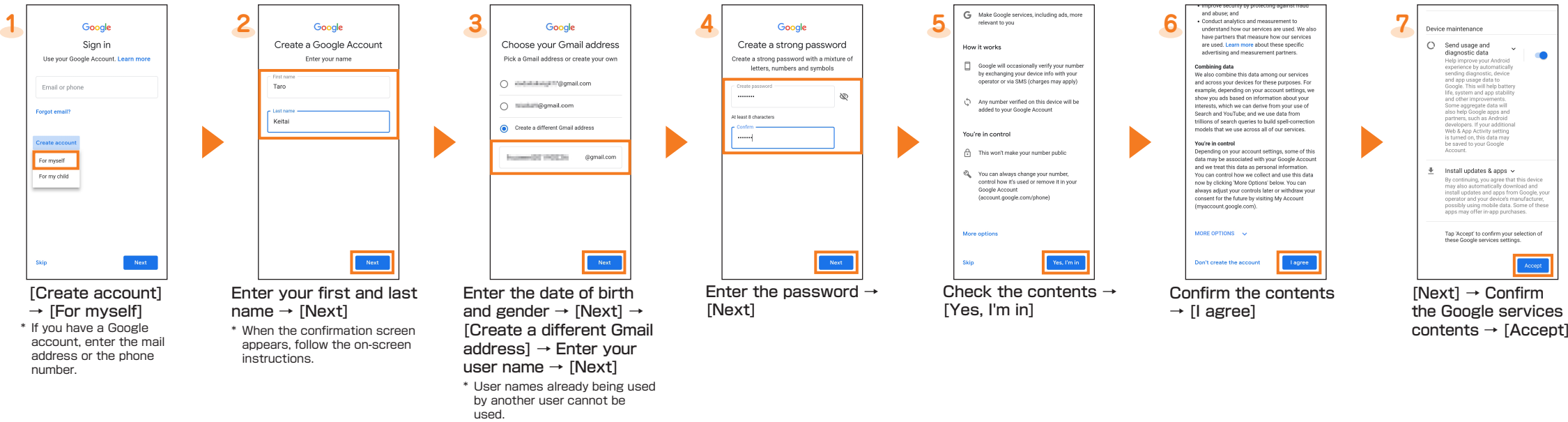
\* This step is not required if you select a Wi-Fi® network that has no security.

Initial Settings: STEP 4

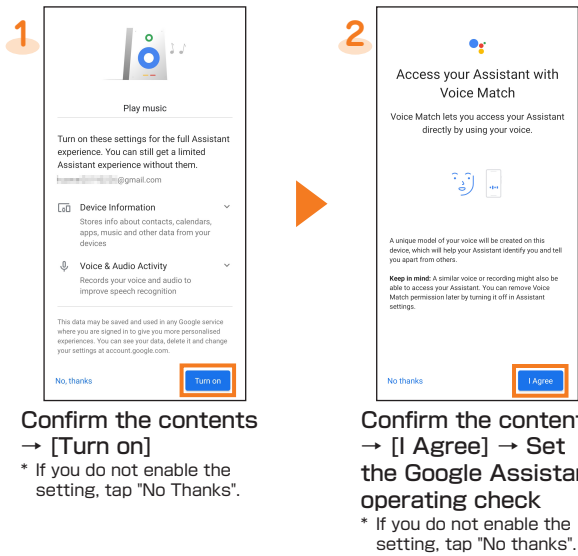
Google Account Settings

You can use Gmail, Google Play or online service by Google after the setup of your Google account. This section describes how to set up an account on the initial settings screen.

User name	Register your Google account (user ID) and the characters that you want to use as your mail address. You can register a desired name, but a name already registered by another user cannot be set.
Password	Register password for using a Google account.

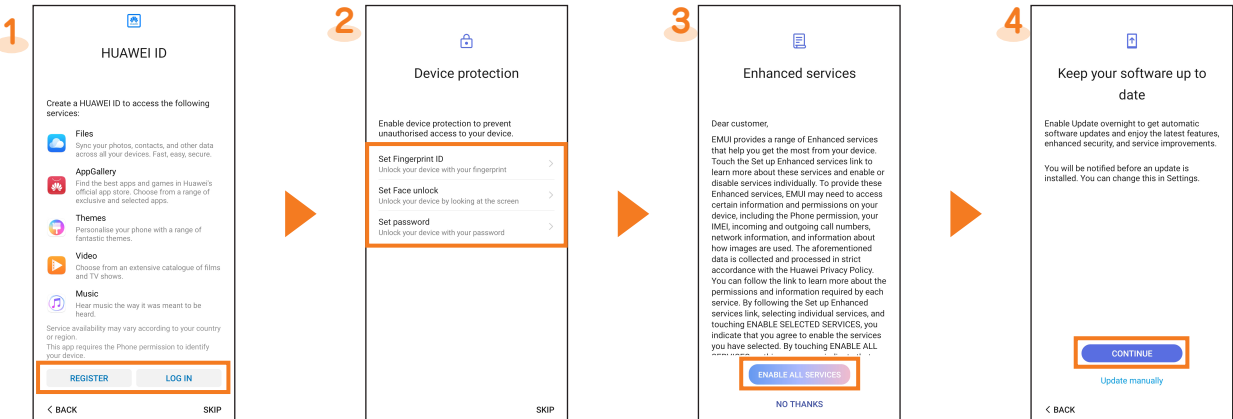


Google Assistant Settings



Initial Settings: STEP 5

HUAWEI ID/Device Protection/Other Settings



LOG IN or REGISTER in HUAWEI ID  
\* If you do not set up, tap "SKIP".

Select the unlock method of the device → Follow the on-screen instructions.  
\* If you do not set up, tap "SKIP".

Confirm the contents → [ENABLE ALL SERVICES]  
\* If you do not enable the setting, tap "NO THANKS".

Confirm the contents → [CONTINUE]  
\* Tap "Update manually" if you do not update software automatically.

## au Initial Settings

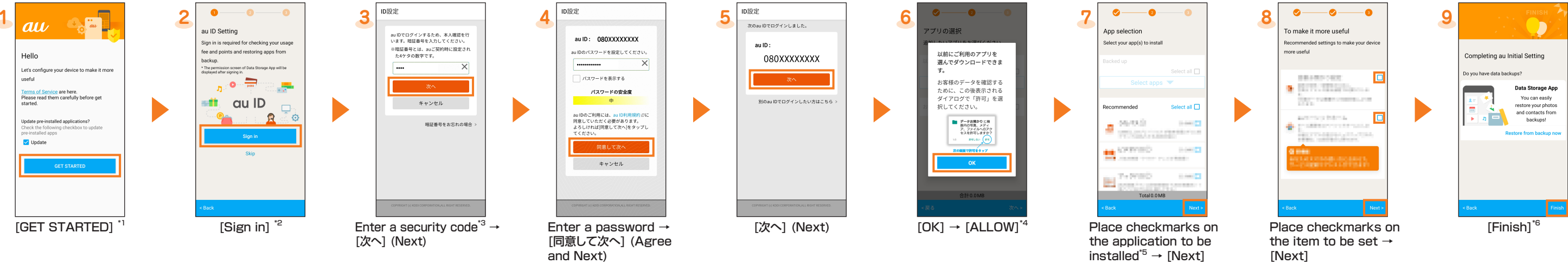
You can update preinstalled apps, set au ID settings, download previously used apps, or make settings for using the product more convenient.

### ■ Setting au ID

This section describes how to set up au ID on the initial settings screen.

You can use various services provided by au such as au Smart Pass or "au かんたん決済 (au Simple Payment Service)", which allows you to purchase apps from Google Play.

● You can also setup au services on the Home screen by tapping [基本フォルダ] (Basic Folder) → [Settings] → [au Settings] → [au Setting Menu] → [au Initial Setting].



\*1 Check the [Update] checkbox to update apps in your device.

\*2 Step 3 and 4 will not be displayed if you have previously registered your au ID. Proceed to step 5.

\*3 The security code is a 4-digit number set at subscription.

\*4 The confirmation screen of the apps permission may be displayed several times. From here on, operate it the same way.

\*5 When the [Select apps] selection is displayed in [Backed up], you can tap to check apps.

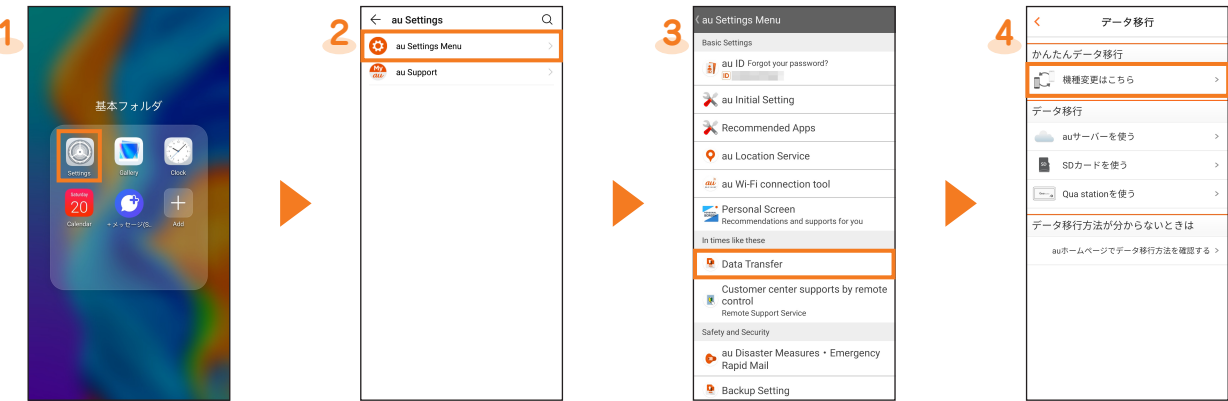
\*6 You can restore the application that you stored in [Data Storage App]. Tap [Restore from backup now] and follow the on-screen instructions.

## Transferring Data from au Settings Menu

You can import/export data from your old au phone to the product using a microSD memory card or au server.

• To import data using au server, store the data from the old au phone to au server beforehand. You need to set au ID before using au server. (Use the au Cloud application if your old au phone has not au Settings Menu)

• If you use a microSD memory card to restore data, save the data from your previous au phone to a microSD memory card. (Use the au backup application if your old au phone has not au Settings Menu)



[Data Transfer]  
\* When the terms and conditions etc. appears, follow the on-screen instructions.

[機種変更はこちら] (For model replacement)  
\* From here on, follow the on-screen instructions.

Use [Data Storage App] to back up photos, the phone book, etc. to au server automatically, set as follows.

Home screen → [基本フォルダ] (Basic Folder) → [Settings] → [au Settings] → [au Settings Menu] → [Backup Setting] → Select the data type to back up automatically

## Display Settings

### ■ Setting Longer Backlight Time



Home screen → [基本フォルダ] (Basic Folder) → [Settings]

[Display] → [Sleep] → Select the backlight time

## Performing a Periodic Diagnosis

You are recommended to use this function for comfortable use of the product.

### ■ [クイック診断してみる] (Quick diagnosis)



Home screen → [au] → [故障紛失サポート] (Repair and delivery support)

\* When the confirmation screen appears, confirm the content and follow the on-screen instructions.

### ■ Setting Notification for Periodical Cleaning

Set "定期クリーニング通知 (Notification of periodical cleaning)" to notify you of timing to diagnose periodically.



Home screen → [au] → [故障紛失サポート] (Repair and delivery support) → [便利な機能] (Useful function)

[各種設定] (Various settings)

Tap [定期クリーニング通知 (Notification of periodical cleaning)]

\* When you receive the notification, try diagnosis with "クイック診断してみる (Quick diagnosis)".