

Thank you for purchasing the HUAWEI P20 lite HWV32 (simply called "HWV32" or "product" from here on).
This "Setting Guide" describes the basic operations and initial settings for using the product. For detailed descriptions on various functions, refer to the online manual or "取扱説明書 詳細版 (Full Instruction Manual)" (Japanese) available on the au homepage.

All other company names and product names are registered trademarks or trademarks of respective companies referred to in this manual.
The ® marks and TM marks may be omitted in this manual.
This manual describes the contents with the Android version 8.0.

Sold by: KDDI CORPORATION, OKINAWA CELLULAR TELEPHONE COMPANY
Imported by: HUAWEI TECHNOLOGIES JAPAN K.K.
Manufactured by: HUAWEI TECHNOLOGIES CO., LTD.
June 2018, 1st Edition

Using "Online Manual"

For detailed description on various functions, refer to "Online Manual" (Japanese) on the au homepage.
<https://www.au.com/online-manual/hwv32/>

You can check "Online Manual" (Japanese) by operating the description on the right using this product.

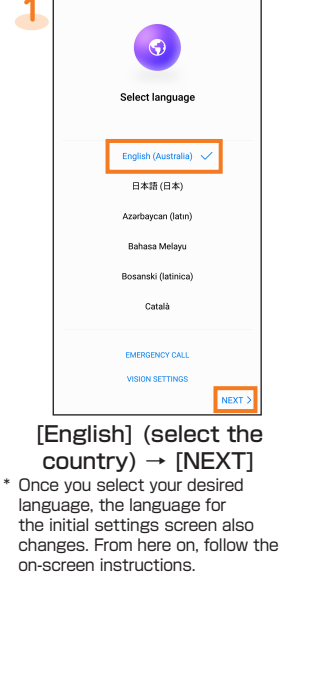


Initial Settings: STEP1

Language Settings

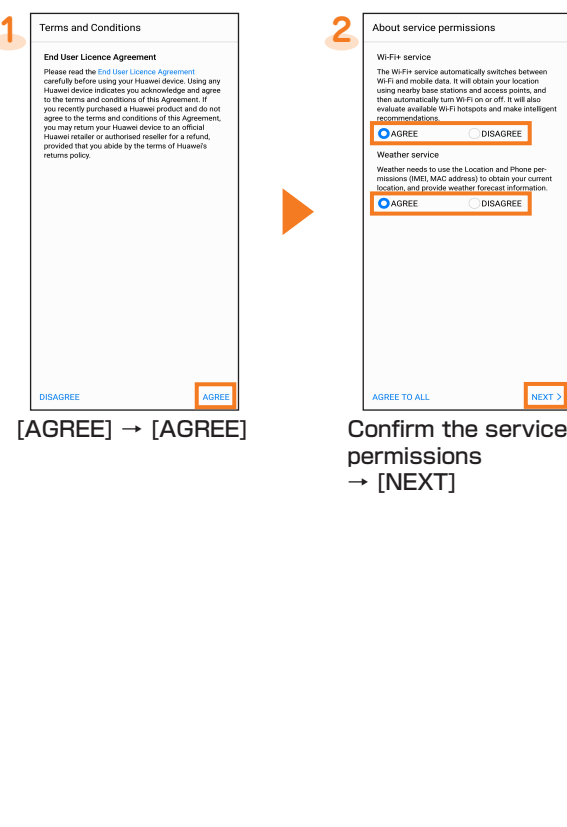
This section describes the initial settings screen that appears when you turn on the power.

Setting the language



Initial Settings: STEP2

Terms and Conditions/About Service Permissions



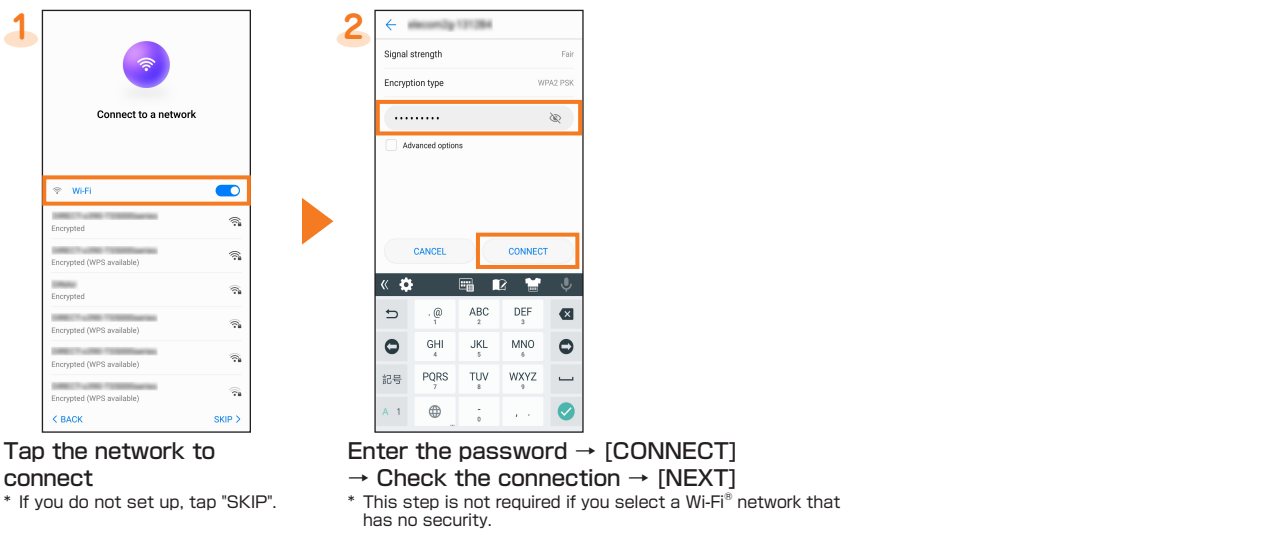
Initial Settings: STEP3

Wireless LAN (Wi-Fi®) Settings

You can connect to the Internet with the wireless LAN environment at home or public wireless LAN environment using the wireless LAN (Wi-Fi®) function.
You need to be in the environment that enables you to connect to the wireless LAN device or the public wireless LAN when you set the wireless LAN (Wi-Fi®) setting according to the way described in this manual.
Check the following information before you set the wireless LAN (Wi-Fi®) setting.

SSID	The name set for the wireless LAN device or public wireless LAN service that you are connecting to
Password	The password set to connect the wireless LAN device or public wireless LAN service

- * They do not guarantee the connection with all public wireless LAN service.
- * You may need a separate contract with a service provider to use some public wireless LAN services.
- * Enabling the wireless LAN (Wi-Fi®) function uses a lot of battery power. We recommend turning off the wireless LAN (Wi-Fi®) function when not using the wireless LAN (Wi-Fi®).

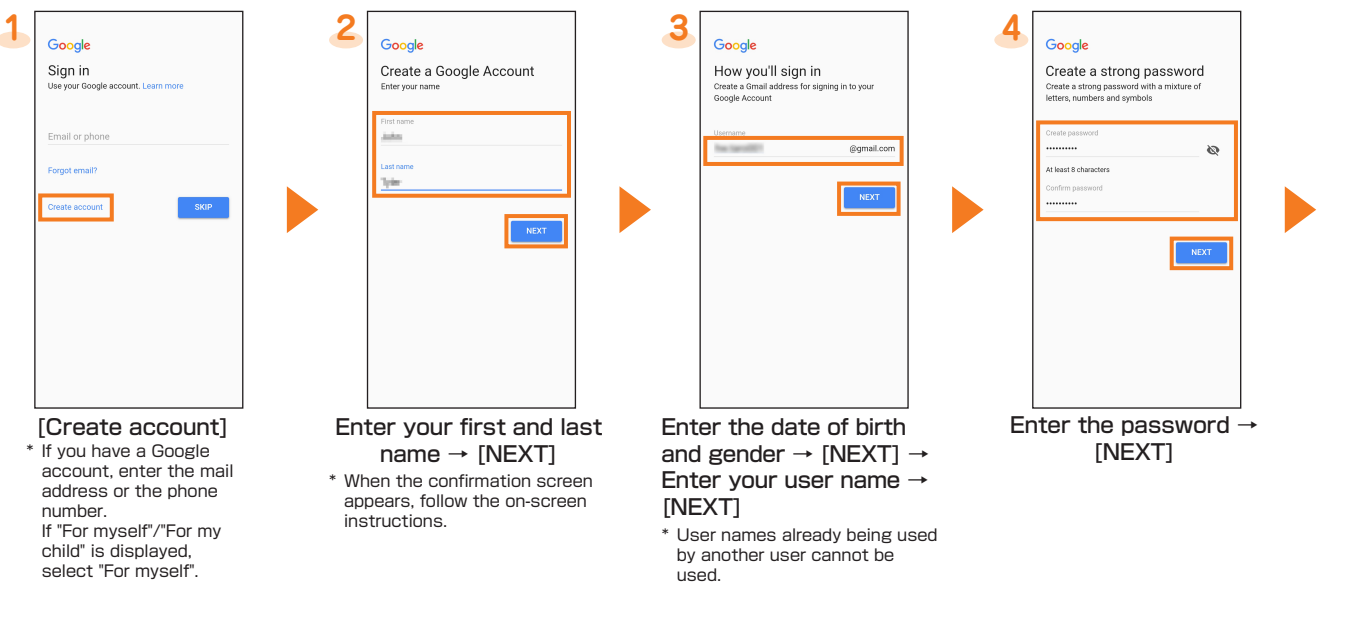


Initial Settings: STEP4

Google Account Settings

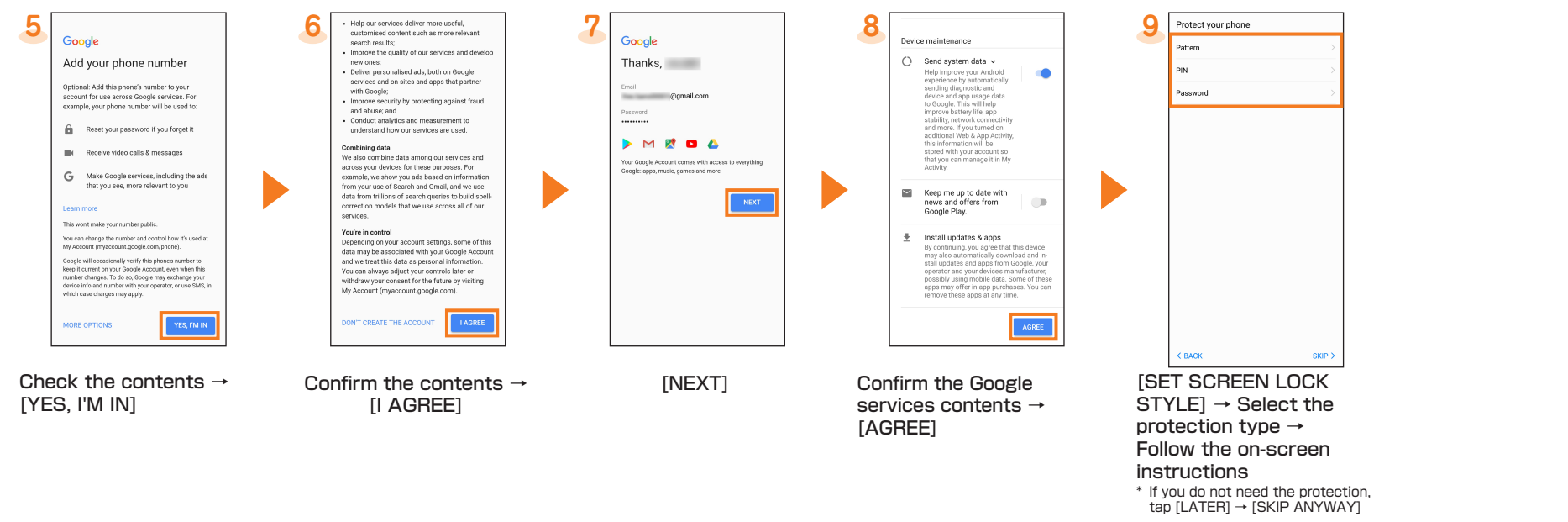
You can use Gmail, Google Play or online service by Google after the setup of your Google account. This section describes how to set up an account on the initial settings screen.

User name	Register your Google account (user ID) and the characters that you want to use as your mail address. You can register a desired name, but a name already registered by another user cannot be set.
Password	Register password for using a Google account.



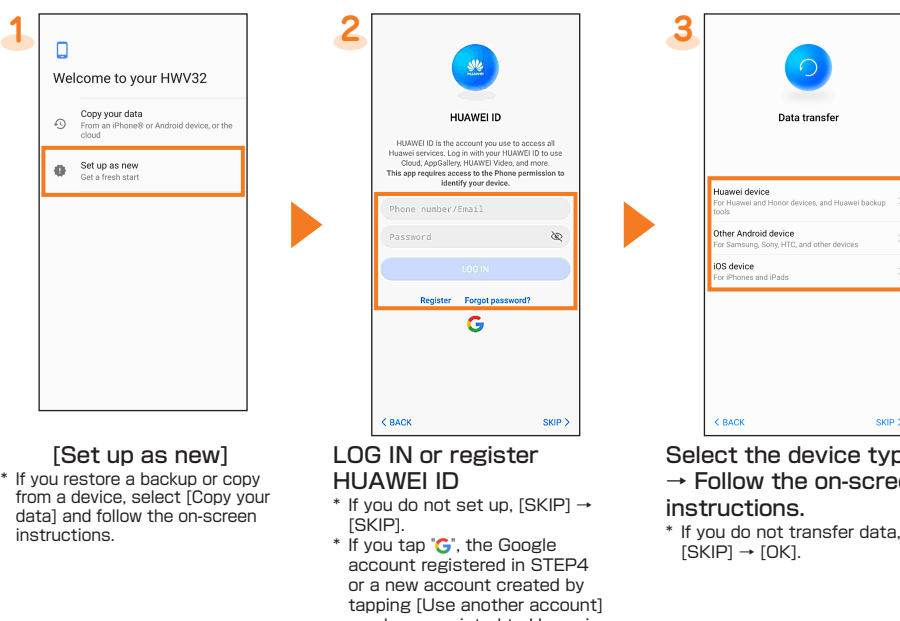
Initial Settings: STEP5

Data Transfer Settings

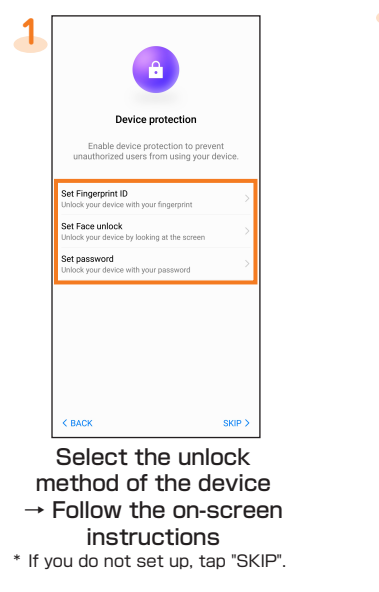


Initial Settings: STEP5

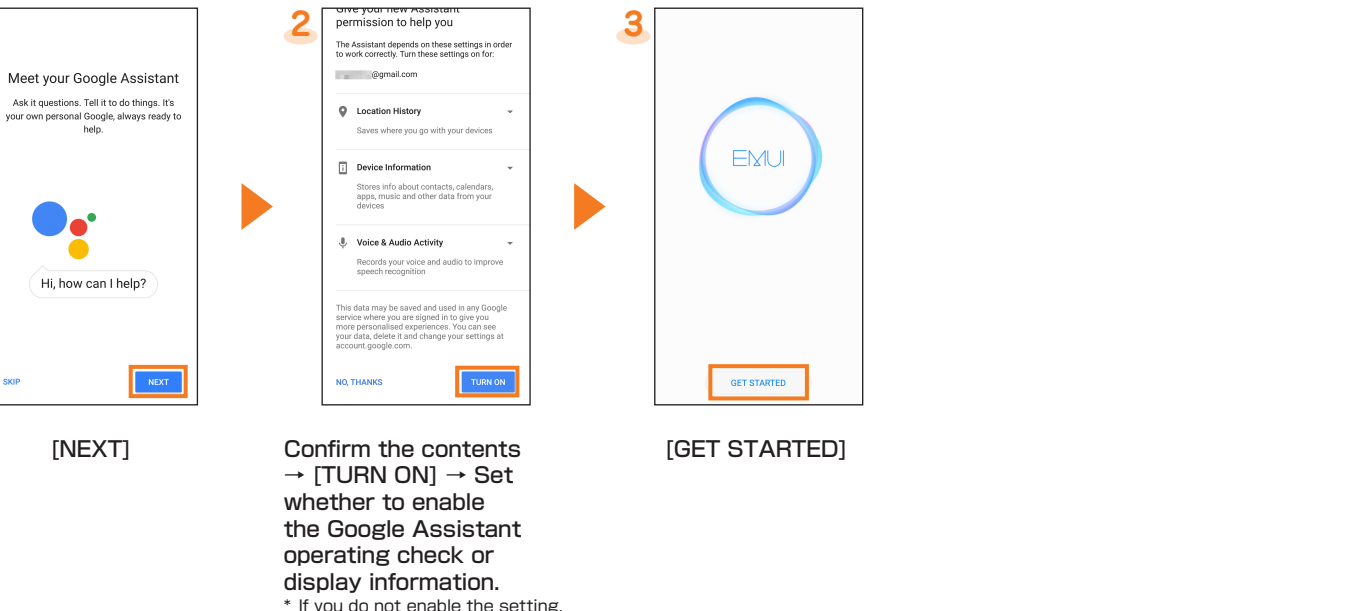
Data Transfer Settings



Device Protection Settings



Google Assistant Settings



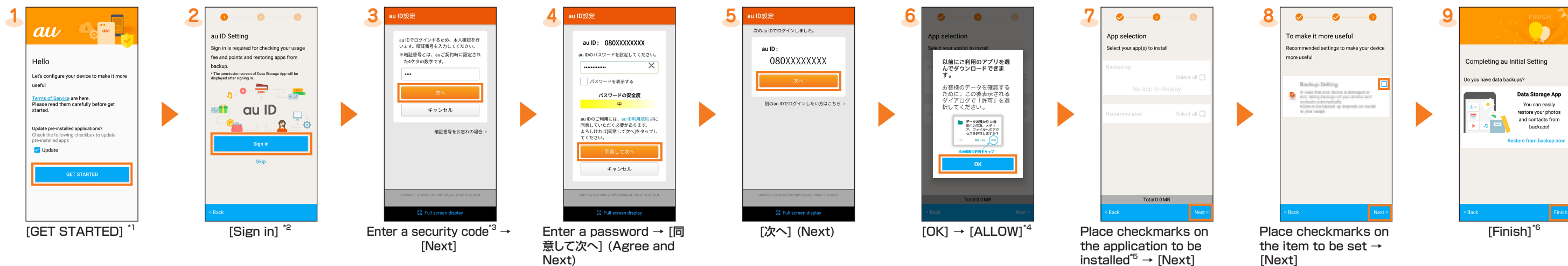
au Initial Settings

au ID Settings

You can set the convenient service and feature of au.

This section describes how to set up au ID on the initial settings screen.

● You can also setup au services on the Home screen by tapping [基本フォルダ] (Basic Folder) → [Settings] → [au Settings] → [au Setting Menu] → [au Initial Setting].



- 1 Check the [Update] checkbox to update apps in your device.
- 2 Step 3 and 4 will not be displayed if you have previously registered your au ID. Proceed to step 5.
- 3 The security code is a 4-digit number set at subscription.
- 4 The confirmation screen of the apps permission may be displayed several times. From here on, operate it the same way.
- 5 When the [Select apps] selection is displayed in [Backed up], you can tap to check apps.
- 6 You can restore the application that you stored in [Data Storage App]. Tap [Restore from backup now] and follow the on-screen instructions.

au-mail Settings

au-mail is a service that enables you to exchange e-mails with other cell phones, which support e-mail, and with PCs. Your au-mail address is decided automatically after the initial settings.

The au-mail address in the initial settings can be changed.

- You cannot setup the initial setting via Wi-Fi® communication.
- You need a separate contact of LTE NET to use au-mail.
- The operations and the screen display are subject to change without notice.

Initial Settings



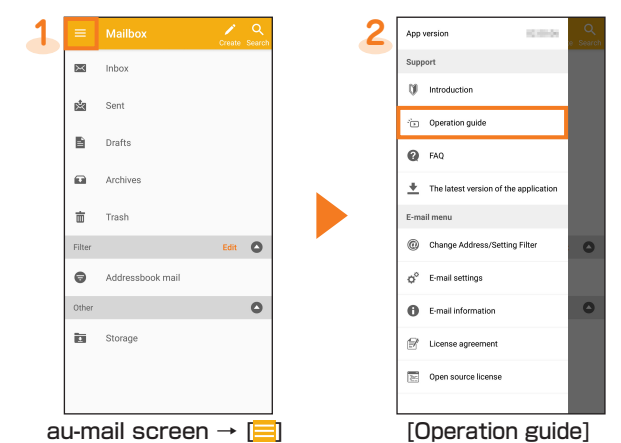
- 1 Home screen → [au-mail]
- 2 Confirm the contents → [同意する] (Agree)
- 3 Confirm the au-mail address → [閉じる] (Close)
* If the confirmation screen for the au-mail application appears, check the content and follow the on-screen instructions.

* The "ezweb.ne.jp" domain is provided until the "au.com" domain is started. Check the au homepage for the start time of "au.com".
* In the case of model replacement, the au-mail address you used is displayed.

Checking au-mail Address

- 1 au-mail screen → [E-mail information]
Your au-mail address appears in the e-mail address field.

Checking au-mail Application's Operation



Changing au-mail Address

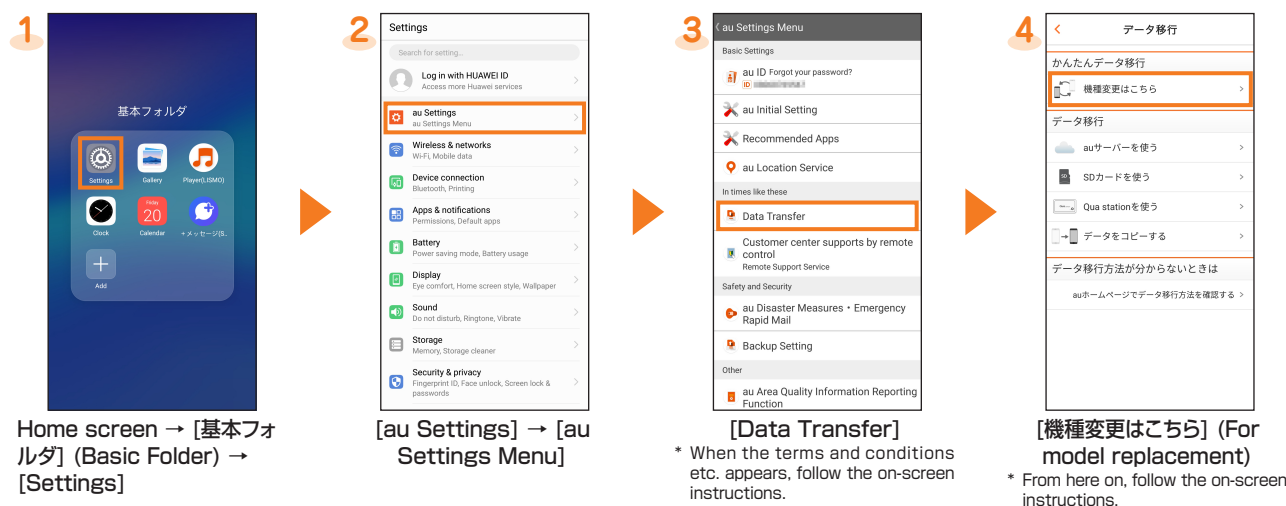
- 1 au-mail screen → [Change Address/Setting Filter]
- 2 [メールアドレスの変更へ] (To change your au-mail address) → Enter the security code → [送信] (Send)
- 3 Confirm the contents → [承諾する] (Agree) → Enter the au-mail address → [送信] (Send)
- 4 [OK] → [閉じる] (Close)

* When the confirmation screen appears, follow the on-screen instructions.
* The operations and the screen display are subject to change without notice.

Transferring Data from au Settings Menu

You can return/save data from your old au phone to the product using a microSD memory card or au server.

- To return data using au server, store the data from the old au phone to au server beforehand. You need to set au ID before using au server. (Use the au Cloud application if your old au phone has not au Settings Menu)
- If you use a microSD memory card to restore data, save the data from your previous au phone card to a microSD memory card. (Use the au backup application if your old au phone has not au Settings Menu)



- 1 Home screen → [基本フォルダ] (Basic Folder) → [Settings]
- 2 [au Settings] → [au Settings Menu]
- 3 [Data Transfer]
* When the terms and conditions etc. appears, follow the on-screen instructions.
- 4 [機種変更はこちら] (For model replacement)
* From here on, follow the on-screen instructions.

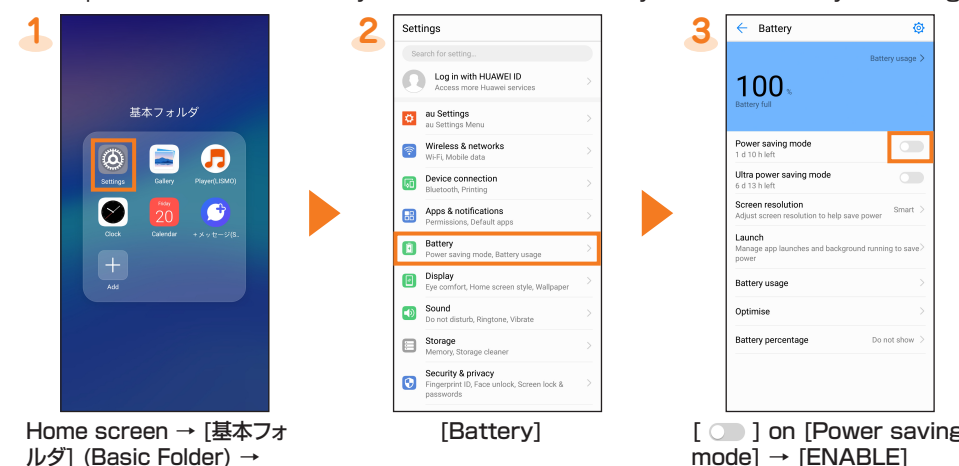
Use [Data Storage App] to back up photos, contacts, etc. to au server automatically, set as follows.

Home screen → [基本フォルダ] (Basic Folder) → [Settings] → [Au Settings] → [Au Settings Menu] → [Backup Setting] → Select the data type to back up automatically

Setting Power Saving Mode

Using Power Saving Mode

Set up to switch to the battery save mode automatically when the battery is running low.



- 1 Home screen → [基本フォルダ] (Basic Folder) → [Settings]
- 2 [Battery]
- 3 [ON] on [Power saving mode] → [ENABLE]

Display Settings

Set the screen brightness and backlight time of the screen.

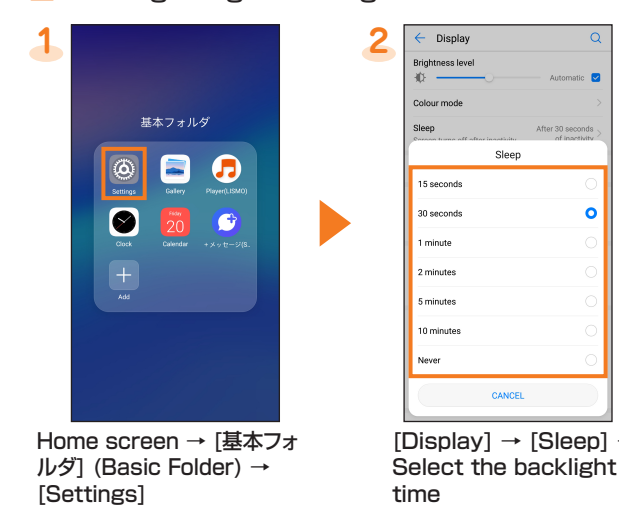
Adjusting Screen Brightness



- 1 Home screen → [基本フォルダ] (Basic Folder) → [Settings]
- 2 [Display] → [Brightness] → Slide the indicator left/right
* Slide right to make brighter or slide left to make dim.

• When you tap "Automatic" to ON, the screen brightness is automatically adjusted according to your condition.

Setting Longer Backlight Time



- 1 Home screen → [基本フォルダ] (Basic Folder) → [Settings]
- 2 [Display] → [Sleep] → Select the backlight time